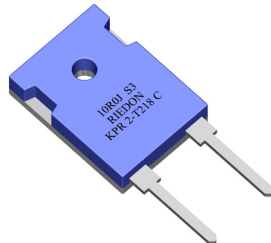
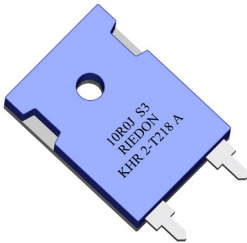


# KPR KHR 2-T218

Power Resistors

www.DataSheet4U.com



- Resistances from 0.05Ohm to 100kOhms
- Power Rating to 100Watt
- Resistance Tolerances to  $\pm 1\%$
- TCR to  $\pm 100\text{ppm/K}$
- Load Stability to 1%
- TO-218 (TO-247) Housing

## SPECIFICATIONS

Type	KPR 2-T218	KHR 2-T218
Resistance Range	0.050 Ohms to 100 kOhms	
Power rating free air 70°C with heatsink	2 W 50 W	2 W 100 W
Thermal Resistance Rthj-c	2.1 K/W	0.8 K/W
Tolerances from 0.1 Ohms from 1.0 Ohms from 5.0 Ohms	5% 2% / 5% 1% / 2% / 5%	
Stability	1%	
Temperature Coefficient 0.05 to 0.099 Ohms 0.1 to 100 kOhms	$\pm 300\text{ ppm/K}$ $\pm 100\text{ ppm/K}$ upon request $\pm 50\text{ ppm/K}$	
Voltage Proof	2.5 kVDC	1.5 kVDC
Max. Voltage depending on resistance value		
Operating Temperature Range	-55 to 155°C	
Resistor Material	Thick Film	
Substrate	Al <sub>2</sub> O <sub>3</sub> upon request: AlN	
Housing	PPS	
Connector Material	Cu tinned	
Terminals	2	
Max. Torque	1 Nm	

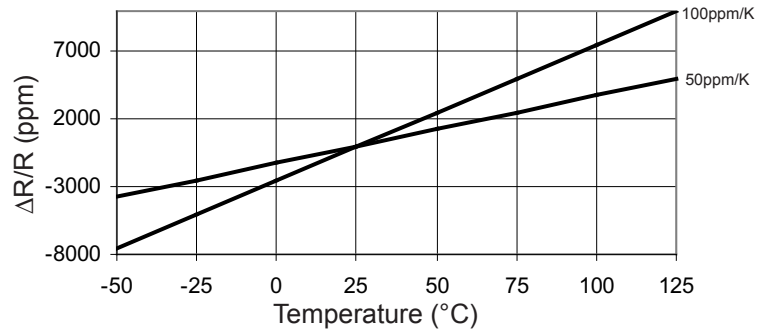
## Ordering Information

Part Number - Resistance - Contact - Tolerance

KHR 2-T218 15 kOhms C 5%

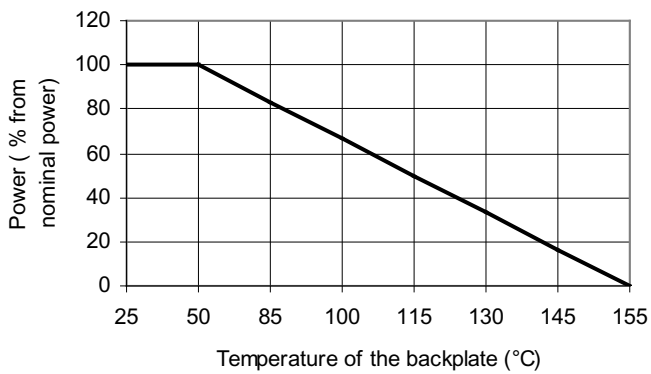
### SPECIFICATIONS (continued)

#### Temperature Coefficient

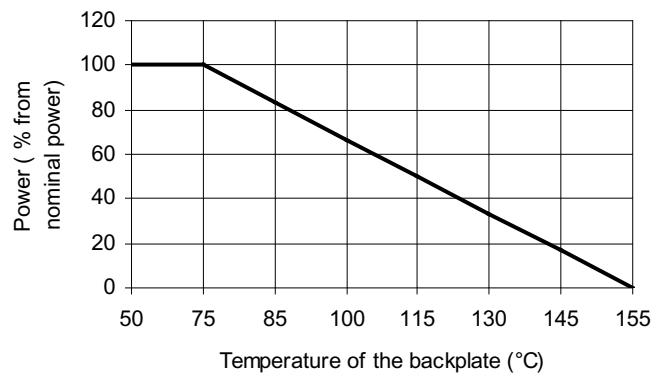


#### Derating

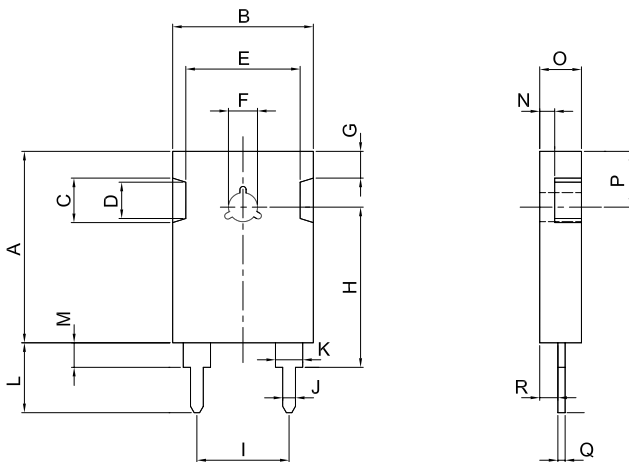
KPR 2-T218



KHR 2-T218



#### Dimensions



Dimension	mm	tol. (±mm)	inches	tol. (±inches)
A	21.10	0.2	0.83	0.008
B	15.50	0.2	0.61	0.008
C	4.90	0.1	0.19	0.004
D	4.00	0.1	0.16	0.004
E	12.60	0.2	0.50	0.008
F	∅3.2	0.1	∅0.13	0.004
G	2.95	0.1	0.12	0.004
H (C-Contact)	17.75	0.2	0.70	0.008
I	10.16	0.2	0.40	0.008
J	1.40	0.1	0.06	0.004
K	3.00	0.1	0.12	0.004
L (C-Contact)	14.50	0.2	0.57	0.008
M (C-Contact)	2.80	0.1	0.11	0.004
N	1.65	0.1	0.06	0.004
O	4.60	0.1	0.18	0.004
P	6.15	0.2	0.24	0.008
Q	0.80	0.1	0.03	0.004
R	2.00	0.1	0.08	0.004