

KR894

Description

Model **KR894** consists of an Infra Red LED and a Photo IC.

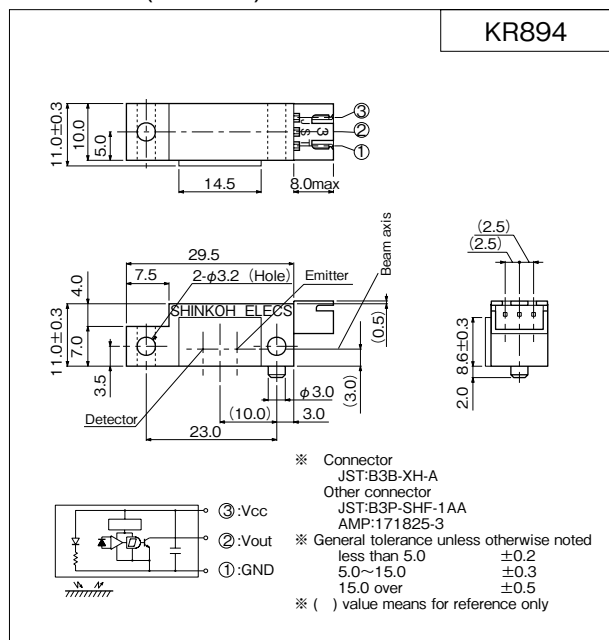
Feature

- Short detecting distance.
- Measures of Visible light affection. (Visible Light cut)
- Easy removing in paper-dust.
- Low Cost.

Application

- Paper detection in Copying machine, Printer, and Facsimile.
- Object passing for Card reader, Auto vending machine.

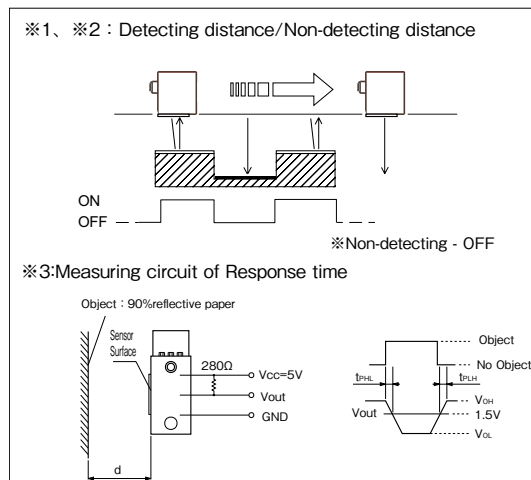
Dimension (Unit:mm)



Absolute Maximum Ratings

[Ta=25°C Unless otherwise noted]

Item	Symbol	Rating	Units
Supply Voltage	V _{CC}	7	V
Output Current	I _o	50	mA
Operating Temperature	T _{opr}	-10 ~ +60	°C
Storage Temperature	T _{stg}	-20 ~ +80	°C



Electro-Optical Characteristics

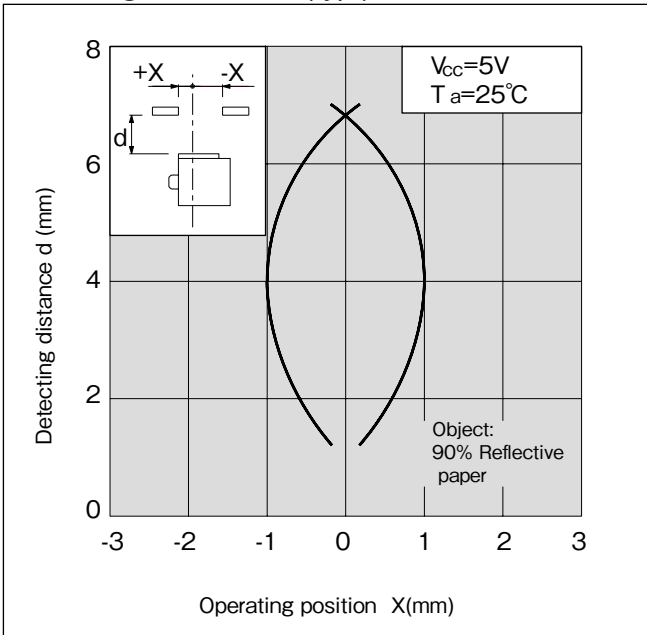
[V_{CC}=5V,Ta=25°C Unless otherwise noted]

Item	Symbol	Condition	min.	typ.	max.	Units
Supply Voltage	V _{CC}		4.75	5.0	5.25	V
Current Consumption	I _{CC}		—	—	40	mA
Low Level Output Voltage	V _{OL}	I _{OL} =16mA at detecting	—	—	0.4	V
High Level Output Voltage	V _{OH}	at non-detecting RL=4.7k Ω	V _{CC} X0.9	—	—	V
Detecting Distance*1	d1	Object 90% Reflective paper	2	—	5.5	mm
Non-Detecting Distance*2	d2		—	—	15	
Response Time	"High" → "Low"	※ 3	—	—	1	msec
	"Low" → "High"		—	—	1	

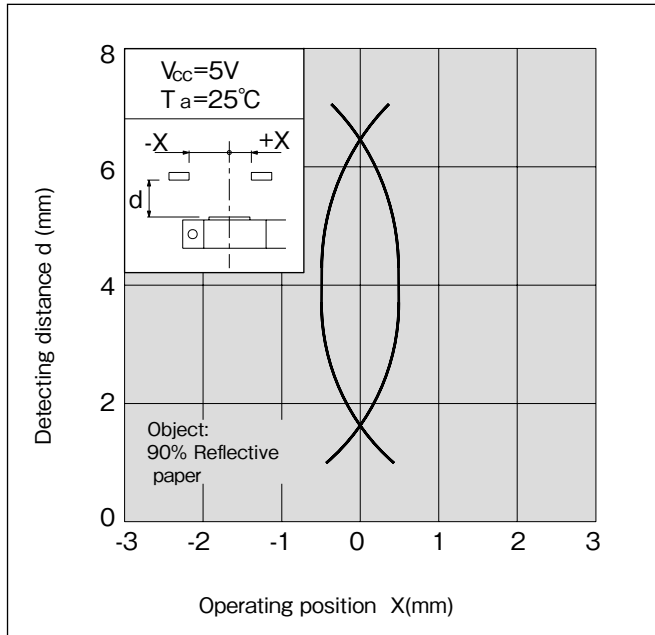
KR894

Characteristics

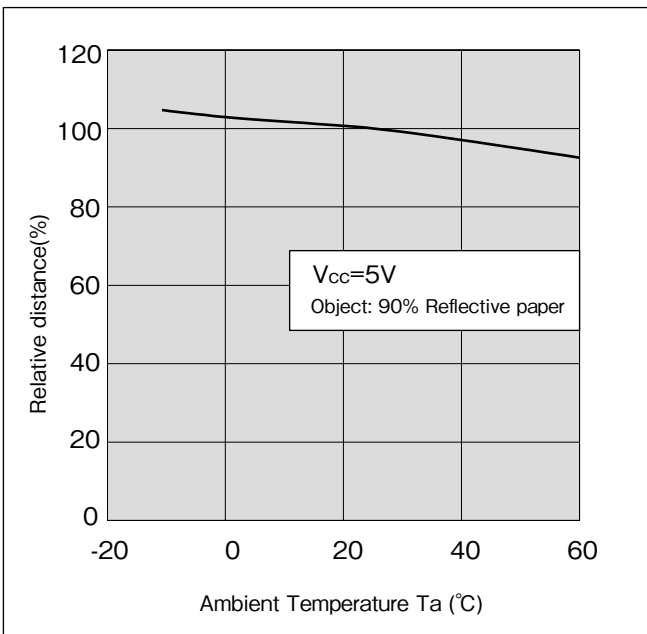
Operating Position vs
Detecting Distance 1 (typ.)



Operating Position vs
Detecting Distance 2 (typ.)



Ambient Temperature vs Detecting Distance (typ.)



Series Line-Up

(Unit:mm)

Model No.	Method	Detecting Distance			Non-Detecting Distance 90% Reflective paper
		90% Reflective paper	Black Paper OD=1.2 *	OHP *	
KR865	Light-Modulation	7 ~ 25	13 ~ 17	10 ~ 20	60
KR866		4 ~ 32	10 ~ 20	8 ~ 25	75
KR895		1.5 ~ 7	2.5 ~ 5.5	2 ~ 6	30
KR1207		1 ~ 15	2.5 ~ 4.5	2 ~ 7	55
KR864	Direct Current	7 ~ 11	8 ~ 9	7 ~ 10	30
KR894		2 ~ 5.5	3.5 ~ 4.5	2 ~ 5.5	15

※ Detecting Distance by Black paper and OHP film are reference only.

- A Custom designed package is available on request.
- Specification are subject to change without notice.

06.01-1A

shinkoh electronics co., ltd.

Head Office: 3-16-9, Minami-Kamonomiya, Odawara, Kanagawa
Zip code: 250-0875 Japan
Tel: +81 -465-45-1212 / Fax: +81 -465-45-1213
Tokyo Office: 5F, Ebuchi Bl., 3-24-13, Minami-Ohi, Shinagawa,
Tokyo
Website: <http://www.shinkoh-elecs.com/>