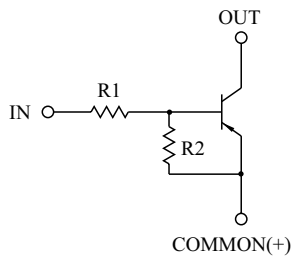


HIGH CURRENT SWITCHING APPLICATION.  
INTERFACE CIRCUIT AND DRIVER CIRCUIT APPLICATION.

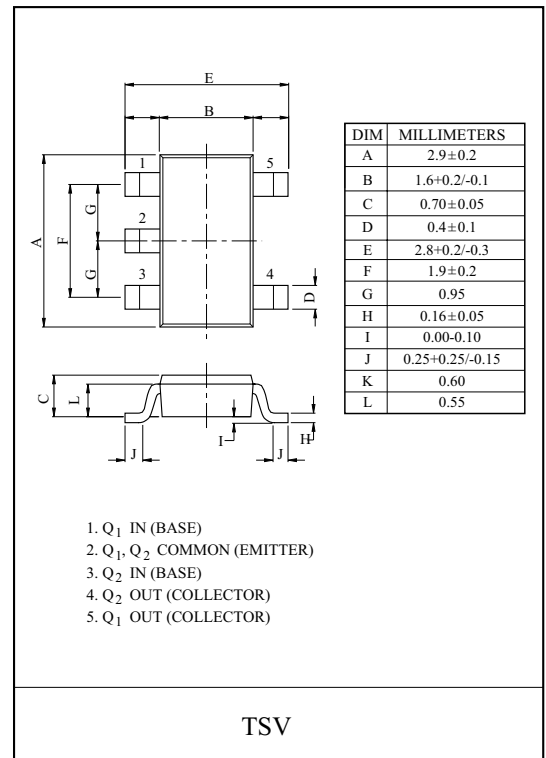
### FEATURES

- With Built-in Bias Resistors.
- Simplify Circuit Design.
- Reduce a Quantity of Parts and Manufacturing Process.
- High Output Current : -800mA.

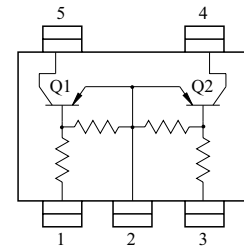
### EQUIVALENT CIRCUIT



| TYPE NO. | R1 (kΩ) | R2 (kΩ) |
|----------|---------|---------|
| KRA521T  | 1       | 1       |
| KRA522T  | 2.2     | 2.2     |
| KRA523T  | 4.7     | 4.7     |
| KRA524T  | 10      | 10      |
| KRA525T  | 1       | 10      |
| KRA526T  | 2.2     | 10      |



### EQUIVALENT CIRCUIT (TOP VIEW)



### MAXIMUM RATING (Ta=25°C)

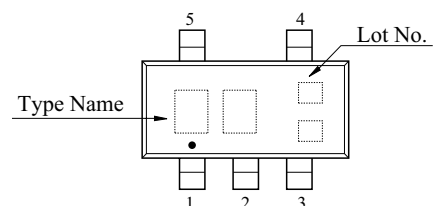
| CHARACTERISTIC            |              | SYMBOL    | RATING    | UNIT |
|---------------------------|--------------|-----------|-----------|------|
| Output Voltage            | KRA521T~526T | $V_O$     | -50       | V    |
| Input Voltage             | KRA521T      | $V_I$     | -10, 10   | V    |
|                           | KRA522T      |           | -12, 10   |      |
|                           | KRA523T      |           | -20, 10   |      |
|                           | KRA524T      |           | -30, 10   |      |
|                           | KRA525T      |           | -10, 5    |      |
|                           | KRA526T      |           | -12, 6    |      |
| Output Current            | KRA521T~526T | $I_O$     | -800      | mA   |
| Power Dissipation         |              | $P_D^*$   | 0.9       | W    |
| Junction Temperature      |              | $T_j$     | 150       | °C   |
| Storage Temperature Range |              | $T_{stg}$ | -55 ~ 150 | °C   |

\* Package mounted on a ceramic board (600mm<sup>2</sup> × 0.8mm)

### MARK SPEC

| TYPE | KRA521T | KRA522T | KRA523T | KRA524T | KRA525T | KRA526T |
|------|---------|---------|---------|---------|---------|---------|
| MARK | PA      | PB      | PC      | PD      | PE      | PF      |

### Marking



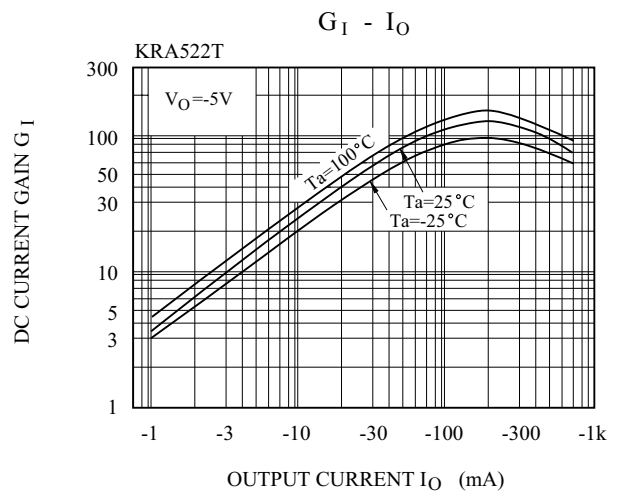
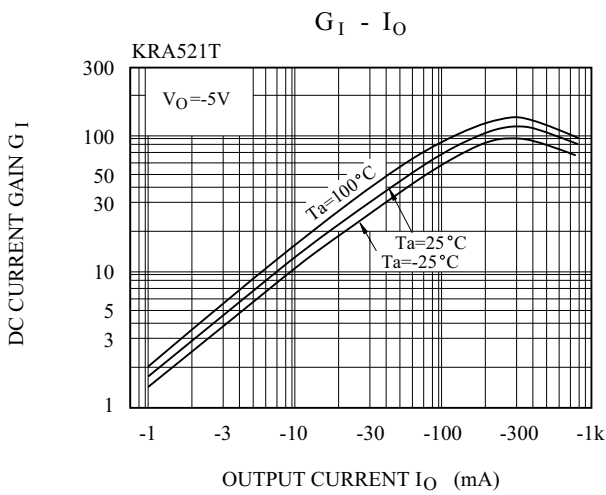
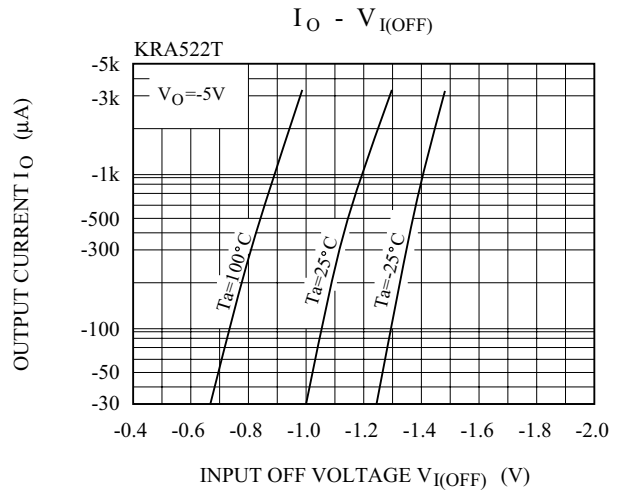
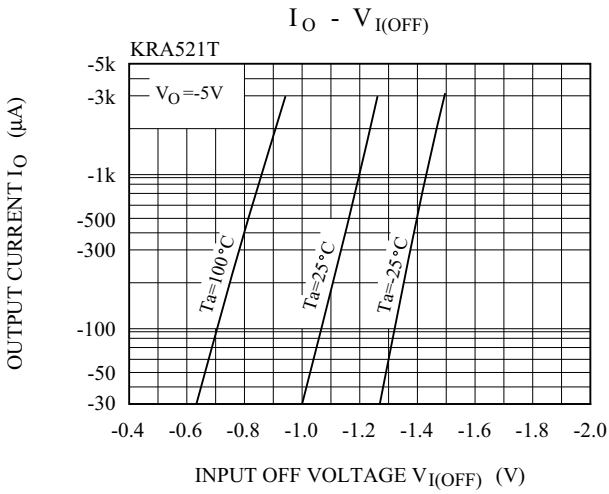
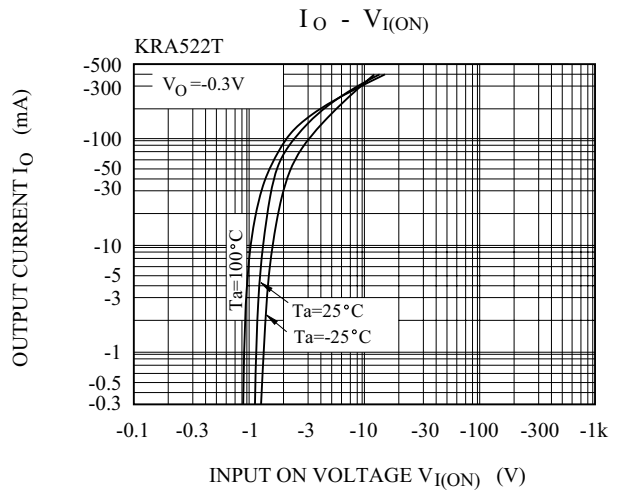
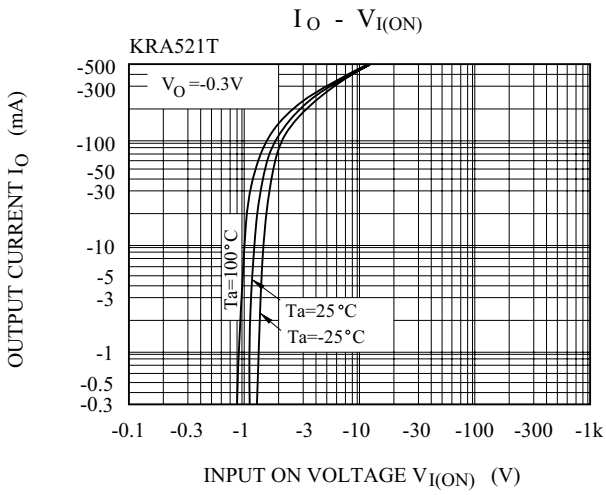
# KRA521T~KRA526T

## ELECTRICAL CHARACTERISTICS (Ta=25 °C)

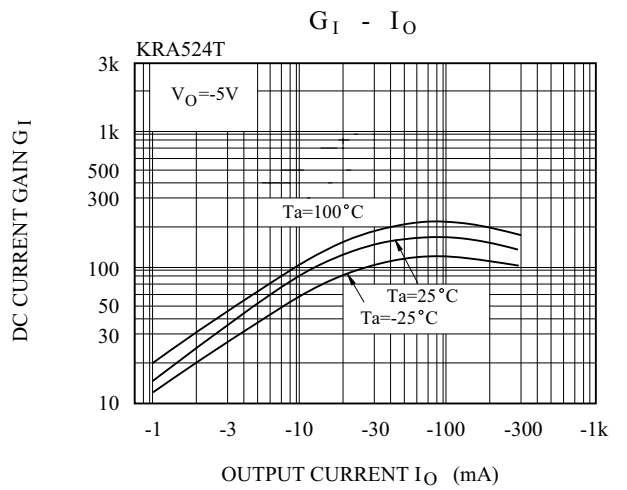
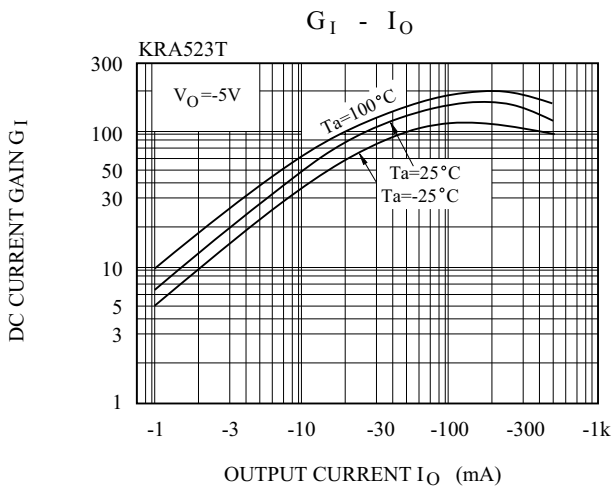
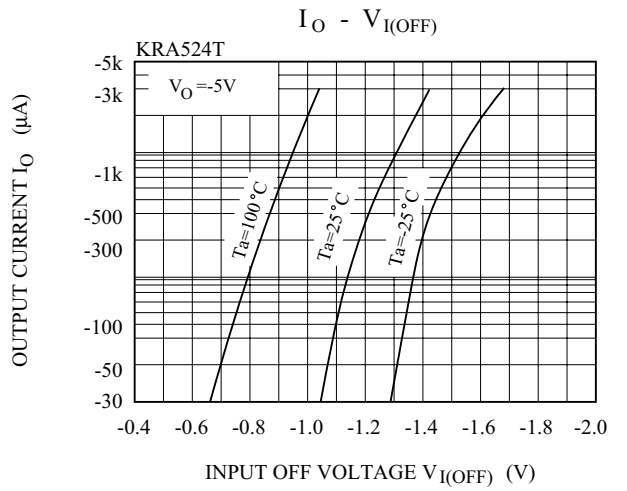
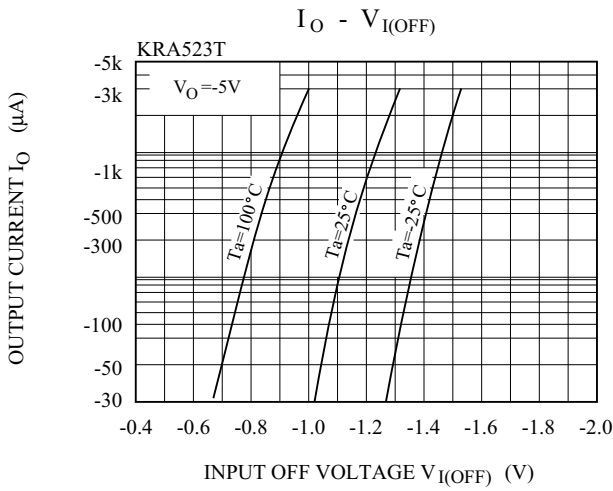
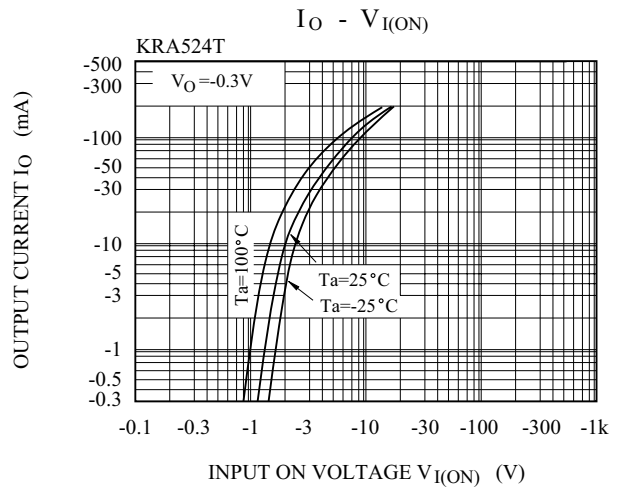
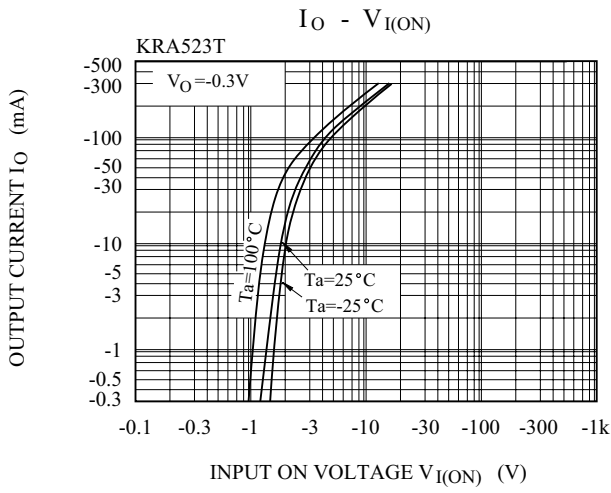
| CHARACTERISTIC         |              | SYMBOL       | TEST CONDITION                 | MIN. | TYP. | MAX.  | UNIT    |
|------------------------|--------------|--------------|--------------------------------|------|------|-------|---------|
| Output Cut-off Current | KRA521T~526T | $I_{O(OFF)}$ | $V_O=-30V, V_I=0$              | -    | -    | -10   | $\mu A$ |
| DC Current Gain        | KRA521T      | $G_I$        | $V_O=-5V, I_O=-50mA$           | 33   | -    | -     |         |
|                        | KRA522T      |              |                                | 39   | -    | -     |         |
|                        | KRA523T      |              |                                | 47   | -    | -     |         |
|                        | KRA524T      |              |                                | 56   | -    | -     |         |
|                        | KRA525T      |              |                                | 56   | -    | -     |         |
|                        | KRA526T      |              |                                | 56   | -    | -     |         |
| Output Voltage         | KRA521T~526T | $V_{O(ON)}$  | $I_O=-50mA, I_I=-2.5mA$        | -    | -0.1 | -0.3  | V       |
| Input Voltage (ON)     | KRA521T      | $V_{I(ON)}$  | $V_O=-0.3V, I_O=-20mA$         | -    | -    | -3.0  | V       |
|                        | KRA522T      |              |                                | -    | -    | -3.0  |         |
|                        | KRA523T      |              |                                | -    | -    | -3.0  |         |
|                        | KRA524T      |              |                                | -    | -    | -3.0  |         |
|                        | KRA525T      |              |                                | -    | -    | -3.0  |         |
|                        | KRA526T      |              |                                | -    | -    | -2.0  |         |
| Input Voltage (OFF)    | KRA521T~524T | $V_{I(OFF)}$ | $V_O=-5V, I_O=-0.1mA$          | -0.5 | -    | -     | V       |
|                        | KRA525T~526T |              |                                | -0.3 | -    | -     |         |
| Transition Frequency   | KRA521T~526T | $f_T^*$      | $V_O=-10V, I_O=-5mA, f=100MHz$ | -    | 200  | -     | MHz     |
| Input Current          | KRA521T      | $I_I$        | $V_I=-5V$                      | -    | -    | -7.2  | mA      |
|                        | KRA522T      |              |                                | -    | -    | -3.8  |         |
|                        | KRA523T      |              |                                | -    | -    | -1.8  |         |
|                        | KRA524T      |              |                                | -    | -    | -0.88 |         |
|                        | KRA525T      |              |                                | -    | -    | -7.2  |         |
|                        | KRA526T      |              |                                | -    | -    | -3.6  |         |

Note : \* Characteristic of Transistor Only.

# KRA521T~KRA526T



# KRA521T~KRA526T



# KRA521T~KRA526T

