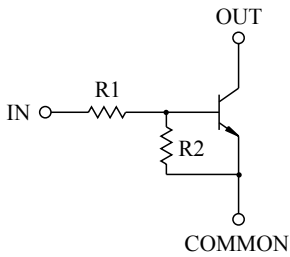


SWITCHING APPLICATION.
INTERFACE CIRCUIT AND DRIVER CIRCUIT APPLICATION.

FEATURES

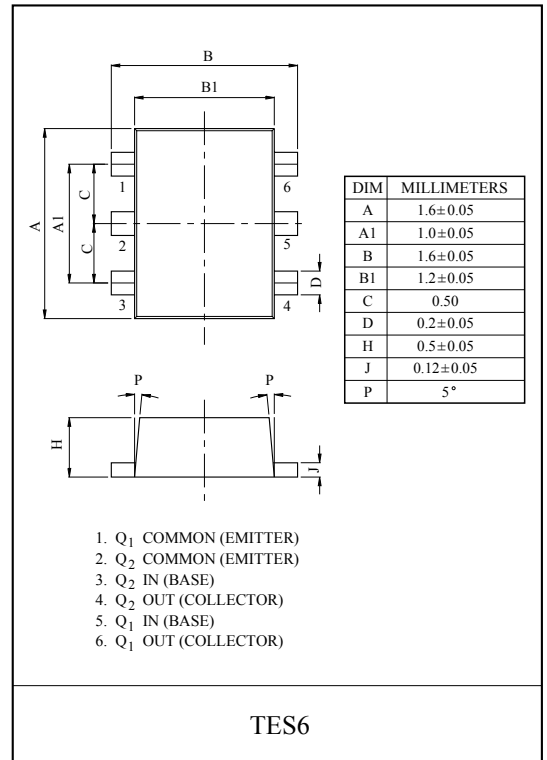
- With Built-in Bias Resistors.
- Simplify Circuit Design.
- Reduce a Quantity of Parts and Manufacturing Process.
- High Packing Density.

EQUIVALENT CIRCUIT

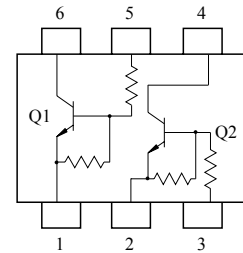


BIAS RESISTOR VALUES

TYPE NO.	R1(kΩ)	R2(kΩ)
KRC827E	10	47
KRC828E	22	47
KRC829E	47	22



EQUIVALENT CIRCUIT (TOP VIEW)



MAXIMUM RATING (Ta=25°C)

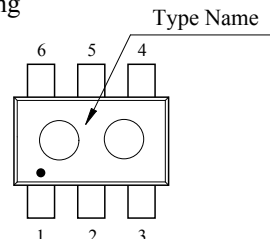
CHARACTERISTIC		SYMBOL	RATING	UNIT
Output Voltage	KRC827E ~ 829E	V _O	50	V
Input Voltage	KRC827E	V _I	30, -6	V
	KRC828E		40, -7	
	KRC829E		40, -15	
Output Current	KRC827E ~ 829E	I _O	100	mA
Power Dissipation		P _D *	200	mW
Junction Temperature		T _j	150	°C
Storage Temperature Range		T _{stg}	-55 ~ 150	°C

* Total Rating.

MARK SPEC

TYPE	KRC827E	KRC828E	KRC829E
MARK	YH	YI	YJ

Marking



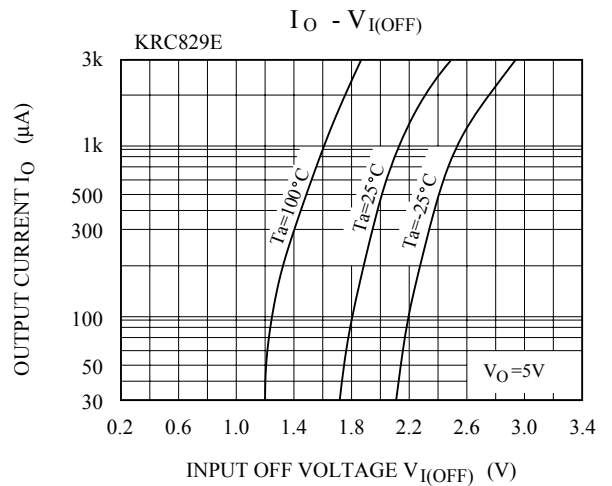
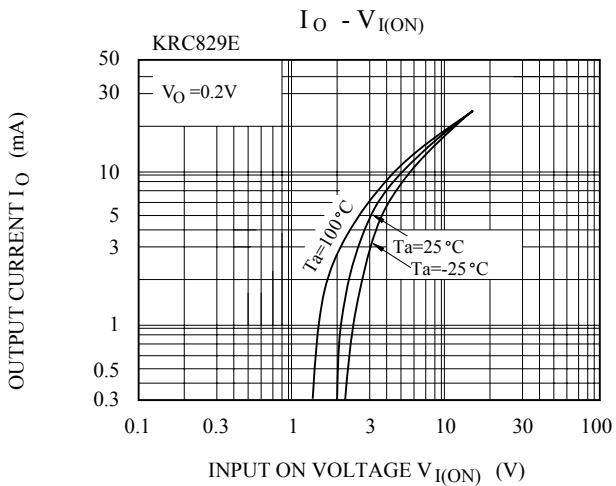
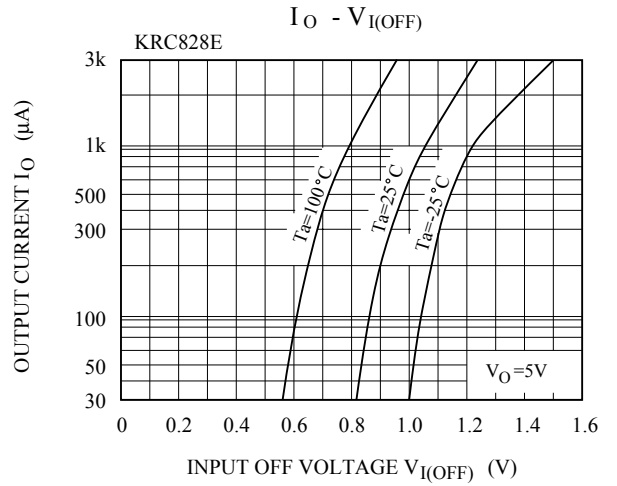
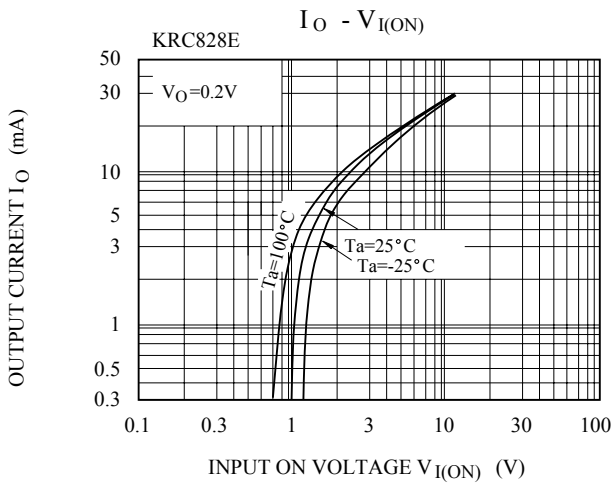
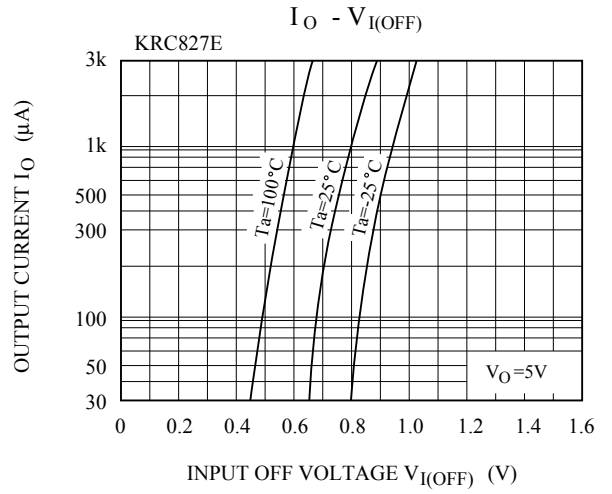
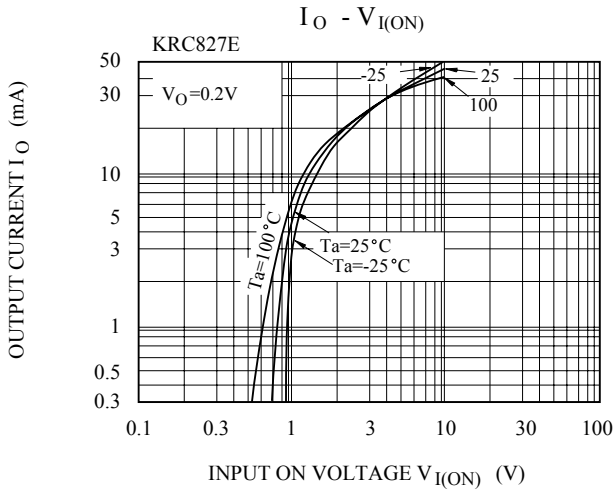
KRC827E~KRC829E

ELECTRICAL CHARACTERISTICS (Ta=25°C)

CHARACTERISTIC		SYMBOL	TEST CONDITION	MIN.	TYP.	MAX.	UNIT	
Output Cut-off Current	KRC827E ~ 829E	$I_{O(OFF)}$	$V_O=50V, V_I=0$	-	-	500	nA	
DC Current Gain	KRC827E	G_I	$V_O=5V, I_O=10mA$	80	150	-		
	KRC828E			80	150	-		
	KRC829E			70	140	-		
Output Voltage	KRC827E ~ 829E	$V_{O(ON)}$	$I_O=10mA, I_I=0.5mA$	-	0.1	0.3	V	
Input Voltage (ON)	KRC827E	$V_{I(ON)}$	$V_O=0.2V, I_O=5mA$	-	1.2	1.8	V	
	KRC828E			-	1.8	2.6		
	KRC829E			-	3.0	5.8		
Input Voltage (OFF)	KRC827E	$V_{I(OFF)}$	$V_O=5V, I_O=0.1mA$	0.5	0.75	-	V	
	KRC828E			0.6	0.88	-		
	KRC829E			1.5	1.82	-		
Transition Frequency	KRC827E ~ 829E	f_T^*	$V_O=10V, I_O=5mA$	-	200	-	MHz	
Input Current	KRC827E	I_I	$V_I=5V$	-	-	0.88	mA	
	KRC828E			-	-	0.36		
	KRC829E			-	-	0.16		
Switching Time	Rise Time	KRC827E	$V_O=5V, V_{IN}=5V$ $R_L=1k\Omega$	-	0.05	-	μS	
		KRC828E		-	0.12	-		
		KRC829E		-	0.26	-		
	Storage Time	KRC827E		t_{stg}	-	2.0		-
		KRC828E			-	2.4		-
		KRC829E			-	1.5		-
	Fall Time	KRC827E		t_f	-	0.36		-
		KRC828E			-	0.4		-
		KRC829E			-	0.41		-

Note : * Characteristic of Transistor Only.

KRC827E~KRC829E



KRC827E~KRC829E

