

Thermostat KSD301

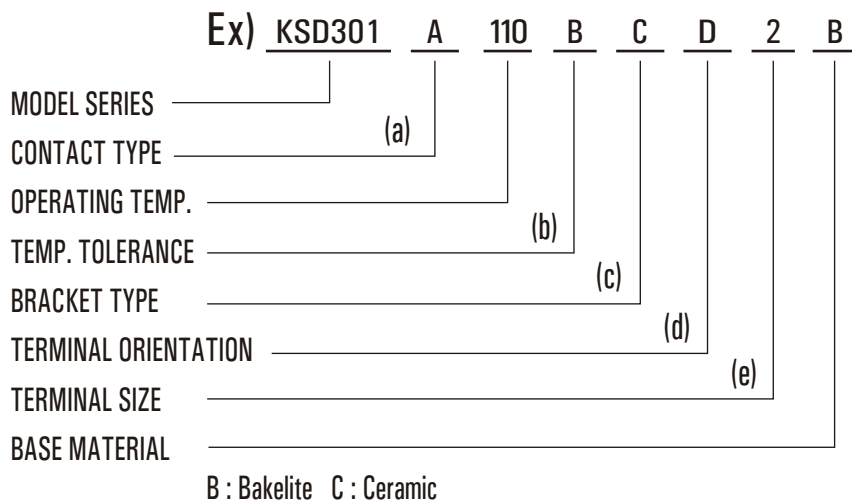
SPECIFICATION

- Electrical Rating : 16A 125V AC (Resistive Load)
10A 250V AC (Resistive Load)
16A 250V AC (Resistive Load)
- Operating Temp : 50 ~ 175°C (UL.CUL 205°C)
- Differential : 10~30K (15K Standard)
- Temp. Tolerance : Operating Temp.±3K±5K
- Heat Durability : 220°C Max. (PPS)
- Circuit Resistance : 50mΩ Max.
- Insulation Resistance : 100MΩ Min.at DC500V
- Dielectric Strength : AC 1000V for One Minute.
or AC 1800V for One Second.
- Operating Life : 100000 Cycles (16A 125V/10A 250V AC)
10000 Cycles (16A 250V AC)



HOW TO ORDER

MODEL CODE (FULL CODE)



(a) CONTACT TYPE :

A = Contact Opens When Temperature Rises to Set Point (Normally Closed)



B = Contact Closes When Temperature Rises to Set Point (Normally Open)



M = Manual Reset

(b) TEMP. TOLERANCE : (*=STANDARD)

Grade	A	*B
Action ± °C	3	5
Reset ± °C	4	8

• The Grade of Temp. Tolerance is "A", When The Operating Temp. is Less Than 105°C.

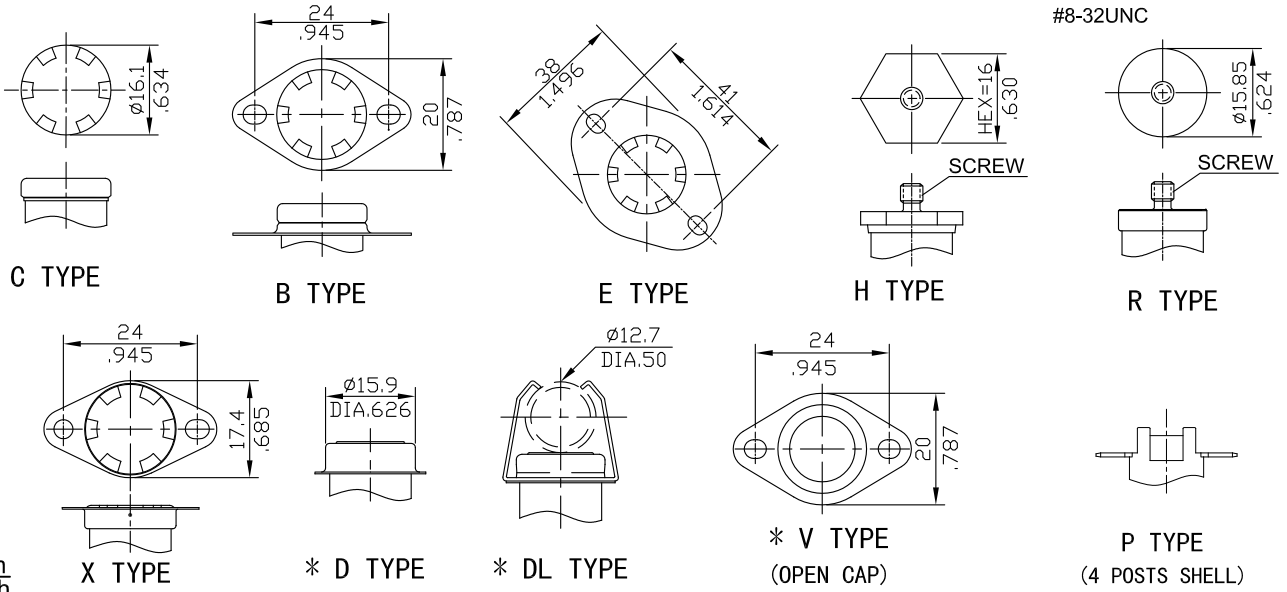
• The Grade of Temp. Tolerance is "B", When The Operating Temp. is Over 106°C.

(c) BRACKET TYPE :

● **FIXED BRACKET**

* STAINLESS STEEL CAP : D,DL,V,T TYPE

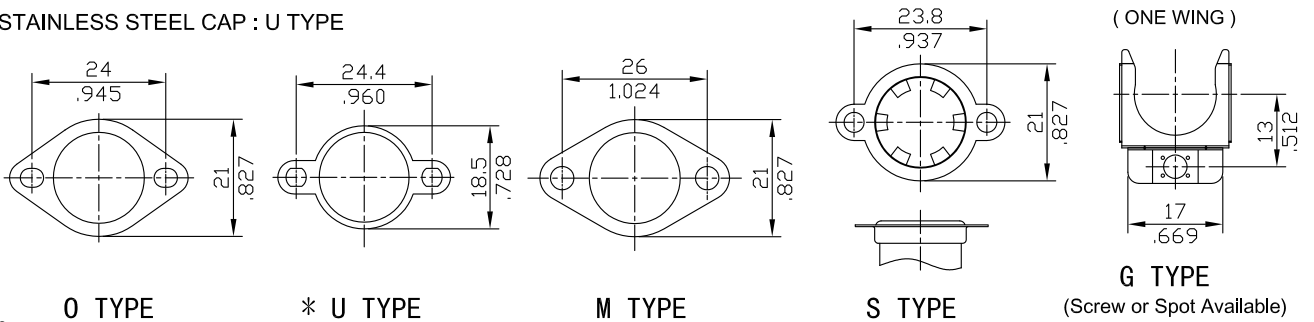
SCREW TYPE : M4x0.7 L:6mm (STD)
M5x0.8 L:6mm (STD)
#6-32UNC
#8-32UNC



mm
inch

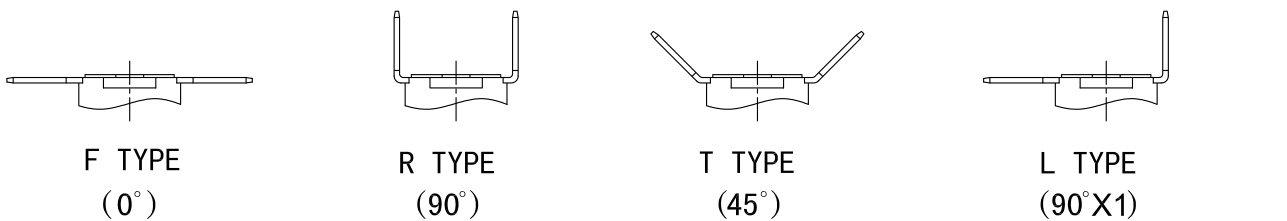
● **LOOSE BRACKET**

* STAINLESS STEEL CAP : U TYPE

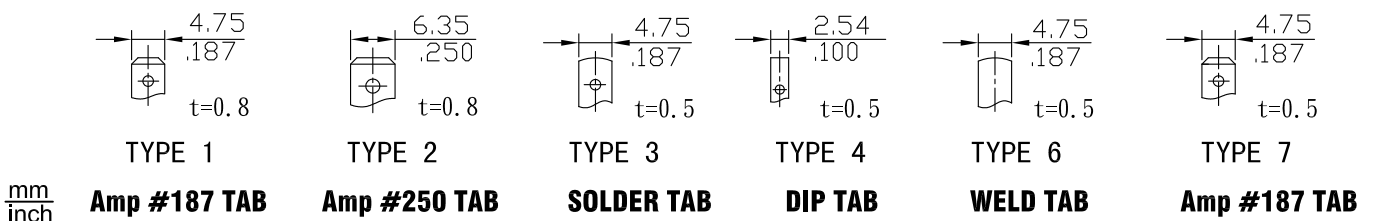


mm
inch

(d) TERMINAL ORIENTATION:



(e) TERMINAL SIZE:

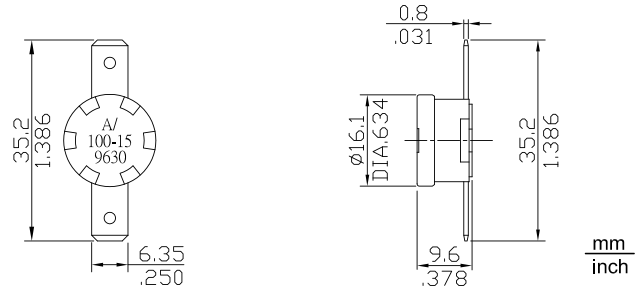


mm
inch **Amp #187 TAB** **Amp #250 TAB** **SOLDER TAB** **DIP TAB** **WELD TAB** **Amp #187 TAB**

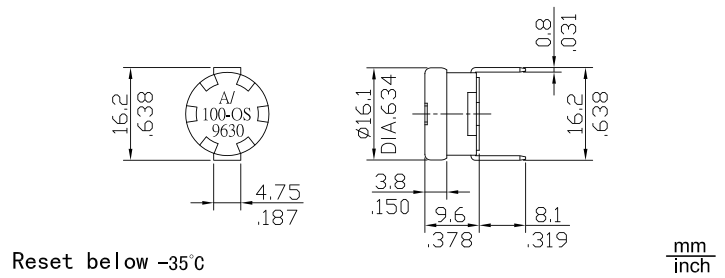
Thermostat KSD301



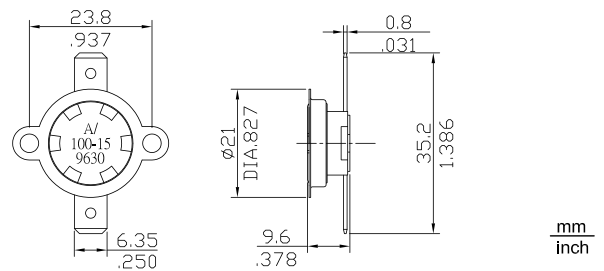
KSD301A-CF2



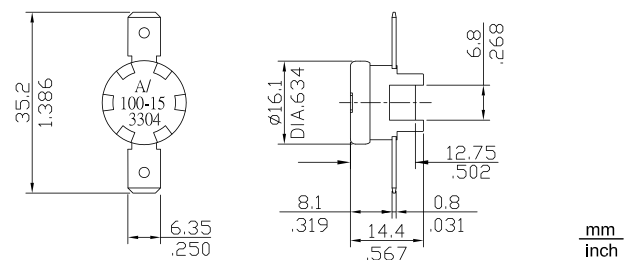
KSD301A-CR1-OS(ONE SHOT)



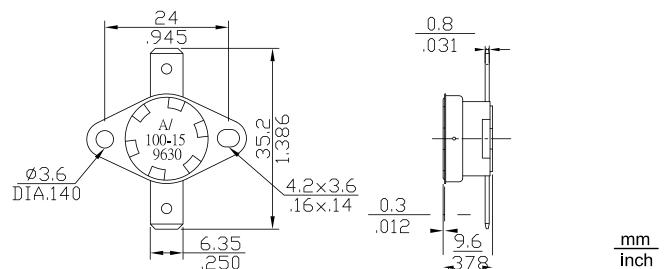
KSD301A-SF2(LOOSE BRACKET)



KSD301A-PF2(4-POST)



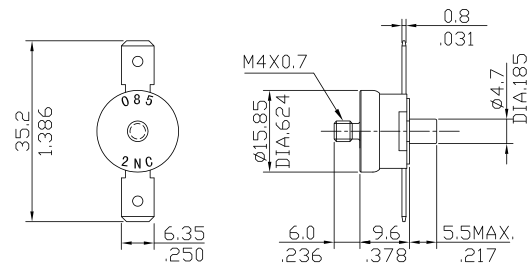
KSD301A-XF2(FIX BRACKET)



Thermostat KSD301

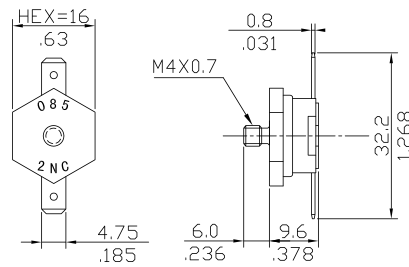


KSD301M-RF2



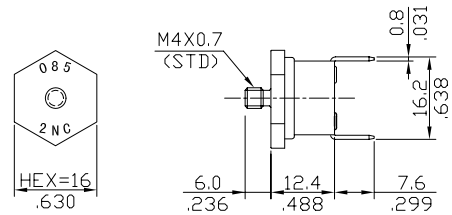
mm
inch

KSD301A-HF1



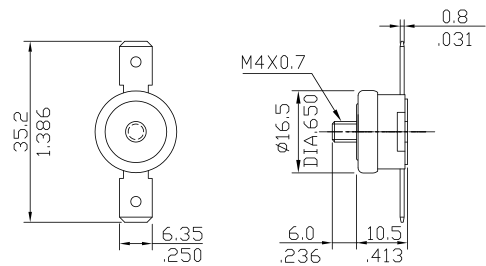
mm
inch

KSD301A-HR1



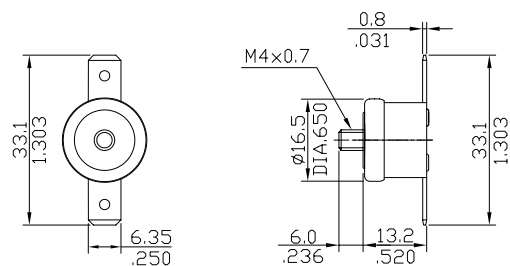
mm
inch

KSD301A-RF2-A



mm
inch

KSD301A-RF2-A

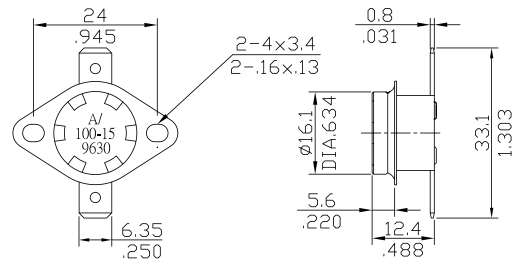


mm
inch

Thermostat KSD301

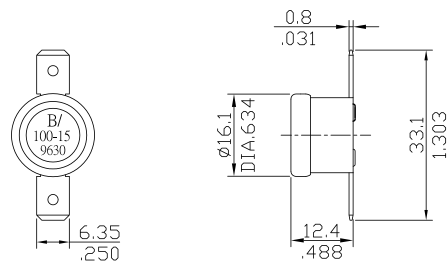


KSD301A-BF2



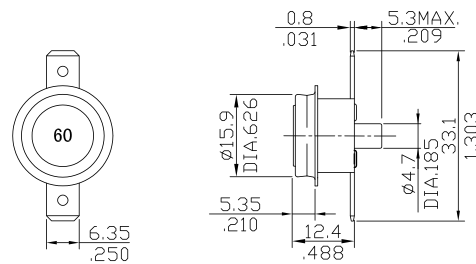
mm
inch

KSD301B-CF2



mm
inch

KSD301M-DF2

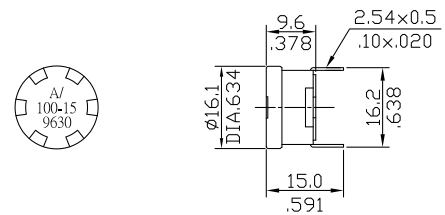


mm
inch

KSD301A-CR4

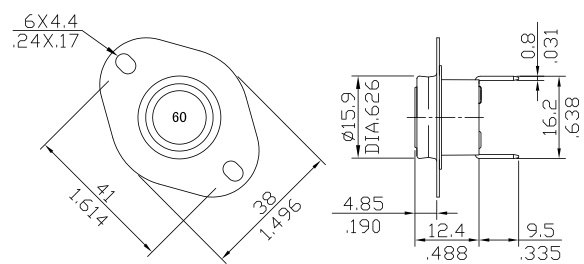


(FOR PCB)



mm
inch

KSD301A-DR2-E

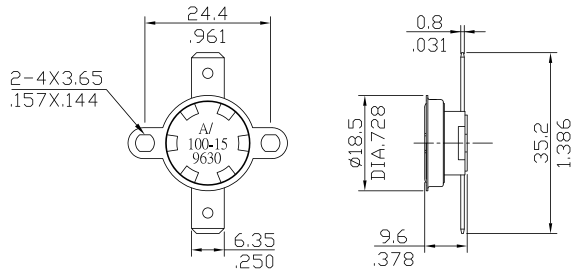


mm
inch

Thermostat KSD301

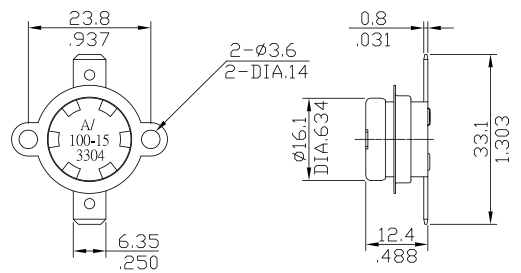


KSD301A-SF2-U



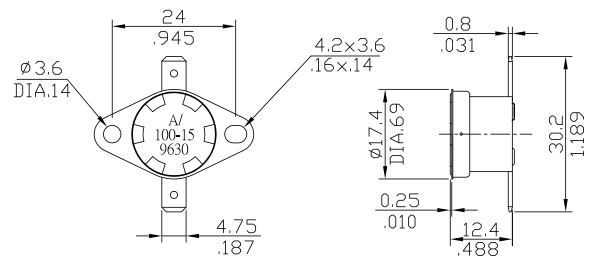
mm
inch

KSD301A-SF2(LOOSE BRACKET)



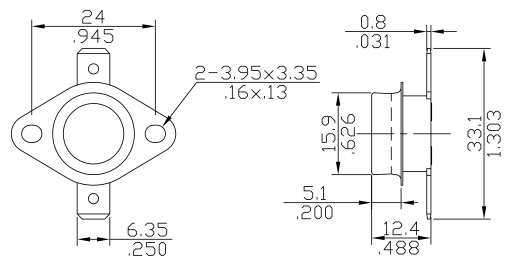
mm
inch

KSD301A-XF1(FIX BRACKET)



mm
inch

KSD301A-BF2-V(OPEN CAP)



mm
inch