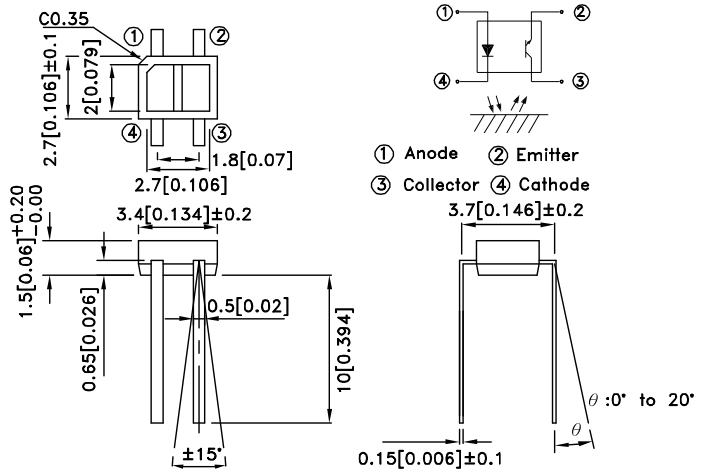


## SUBMINIATURE, HIGH SENSITIVITY PHOTOINTERRUPTER

### \*Features

- Compact and thin.
- Visible light cut-off type.
- High sensitivity.
- RoHS Compliant.



### \*Applications

- Cassette tape recorders, VCRs.
- Floppy disk drives.
- Various microcomputerized control equipment.

UNIT : MM [INCH]

TOLERANCE : ±0.25 [± 0.01] UNLESS OTHERWISE NOTED.

### \*Absolute Maximum Ratings $T_a=25^\circ\text{C}$

Parameter		Symbol	Rating	Unit
Input	Forward current	$I_F$	50	mA
	Reverse voltage	$V_R$	6	V
	Power dissipation	$P_D$	75	mW
	Peak Forward Current (Pulse Width $\leq 100\mu\text{s}$ , Duty Cycle = 1%)	$I_{FP}$	1	A
Output	Collector-emitter voltage	$V_{CEO}$	35	V
	Emitter-collector voltage	$V_{ECO}$	6	V
	Collector current	$I_C$	20	mA
	Collector power dissipation	$P_C$	75	mW
Operating temperature		$T_{opr}$	-25~+85	$^\circ\text{C}$
Storage temperature		$T_{stg}$	-40~+100	$^\circ\text{C}$
soldering temperature (1/16 inch from body for 5 seconds)		$T_{sol}$	260	$^\circ\text{C}$



## Electro-optical Characteristics

Parameter		Symbol	Conditions	Min.	TYP.	Max.	Unit	
Input	Forward Voltage	$V_F$	$I_F=20\text{mA}$	1.0	1.2	1.5	V	
	Reverse Current	$I_R$	$V_R=6\text{V}$	-	-	10	$\mu\text{A}$	
	Peak Wavelength	$\lambda_P$	$I_F=20\text{mA}$	-	940	-	nm	
Output	Collector Dark Current	$I_{CEO}$	$V_{CE}=20\text{V}$	-	$10^{-9}$	$10^{-7}$	A	
Transfer characteristics	*1 Collector Current	$I_C$	$V_{CE}=2\text{V}$ $I_F=4\text{mA}$	10	-	400	$\mu\text{A}$	
	*2 Leak Current	$I_{LEAK}$	$V_{CE}=2\text{V}$ $I_F=4\text{mA}$	-	-	0.1	$\mu\text{A}$	
	Response time	Rise time	$t_r$	$V_{CE}=2\text{V}$ $I_C=100\mu\text{A}$ $R_L=1\text{K}\Omega, d=1\text{mm}$	-	20	100	$\mu\text{sec}$
		Fall time	$t_f$		-	20	100	$\mu\text{sec}$

\*1 The condition and arrangement of the reflective object are shown below.  
\*2 Without reflective object.

BIN CODE	$I_C$ ( $\mu\text{A}$ )
E	10-120
F	100-250
G	200-400

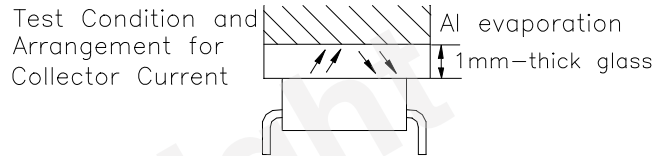


Fig. 1 Forward Current vs. Forward Voltage

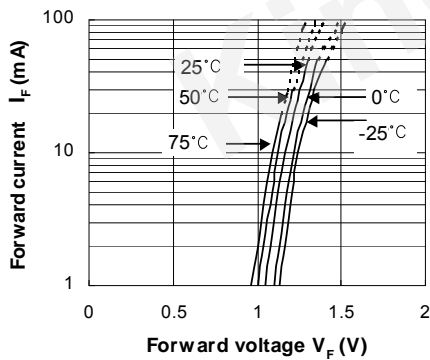


Fig. 3 Collector Current vs. Collector-emitter Voltage

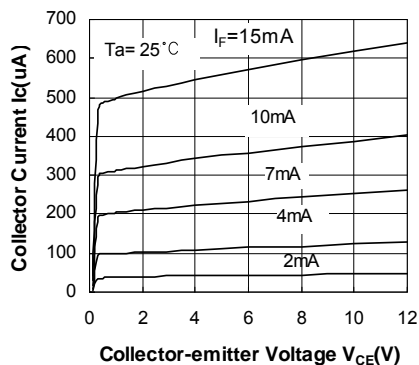


Fig. 2 Collector Current vs. Forward Current

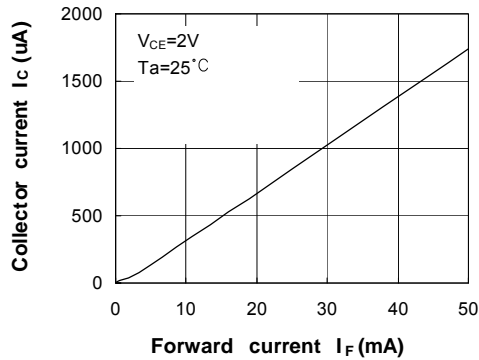


Fig. 4 Relative Collector Current vs. Ambient Temperature

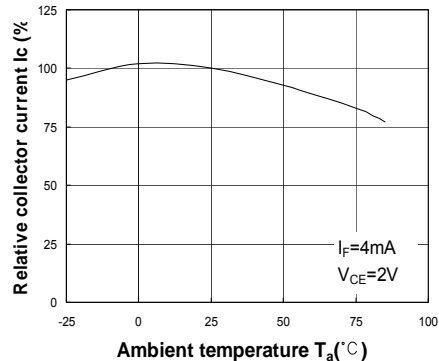
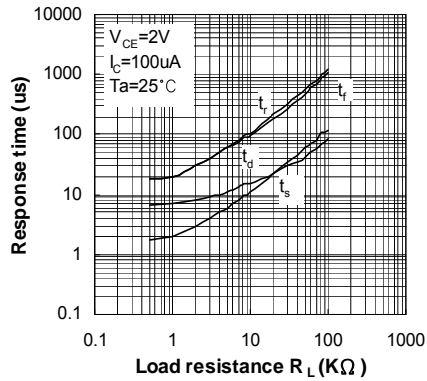


Fig. 5 Response Time vs. Load Resistance



Test Circuit for Response Time

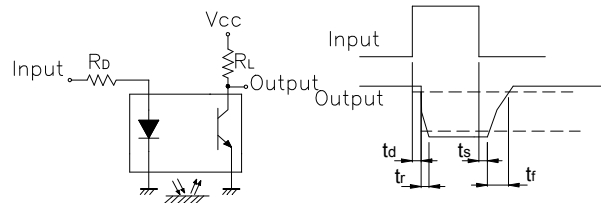


Fig. 6 Collector Dark Current vs. Ambient Temperature

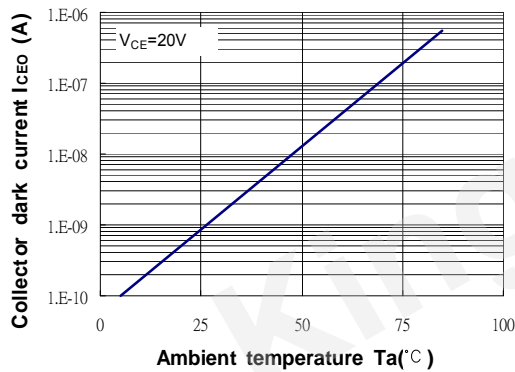


Fig. 7 Relative Collector Current vs. Distance between Sensor and Al Evaporation Glass

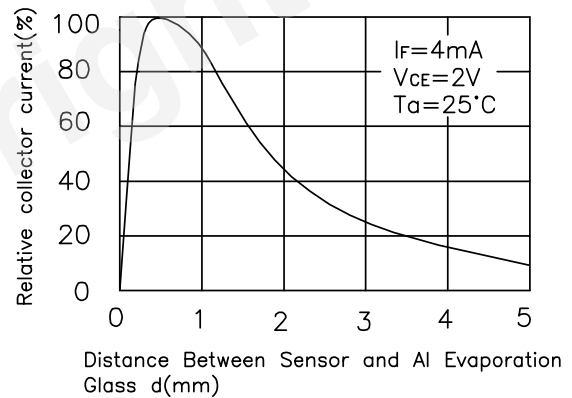


Fig. 8 Relative Collector Current vs. Card Moving Distance (1)

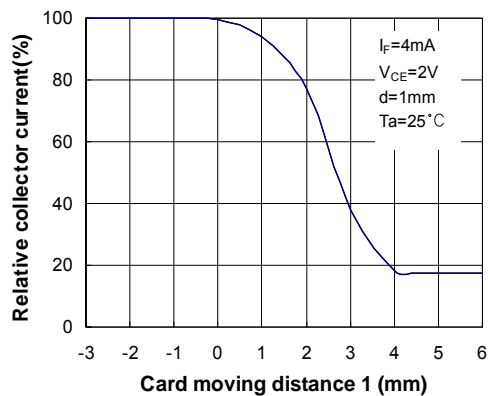
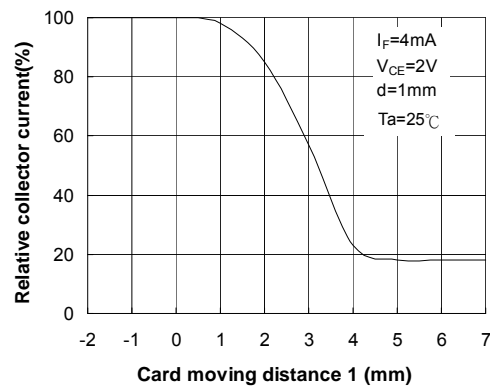
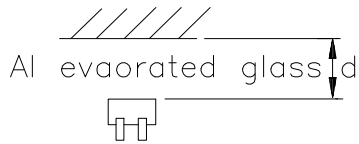


Fig. 9 Relative Collector Current vs. Card Moving Distance (2)



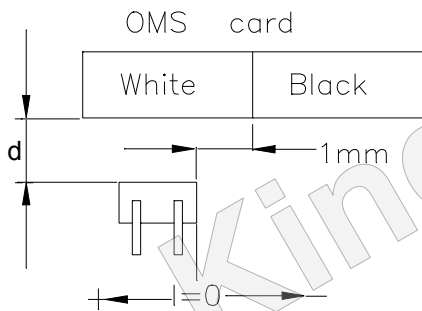
**Test Condition for Distance&Detecting Position Characteristics**

Correpond to Fig. 7



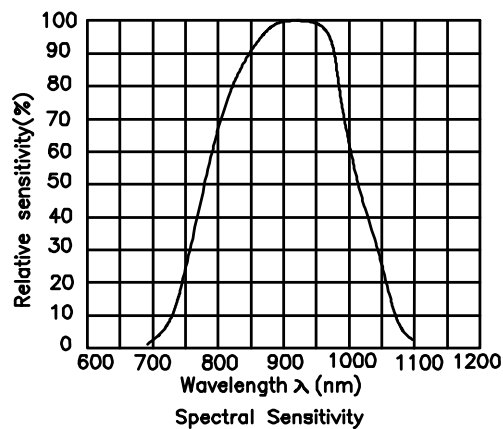
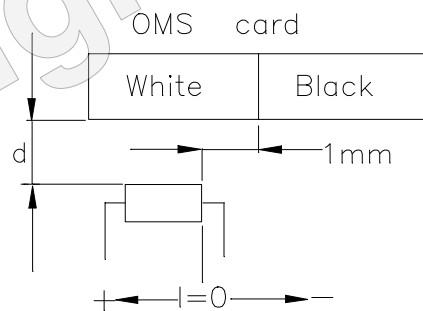
Correpond to Fig. 8  
Test condition

$I_F = 4\text{mA}$   
 $V_{CE} = 2\text{V}$   
 $d = 1\text{mm}$



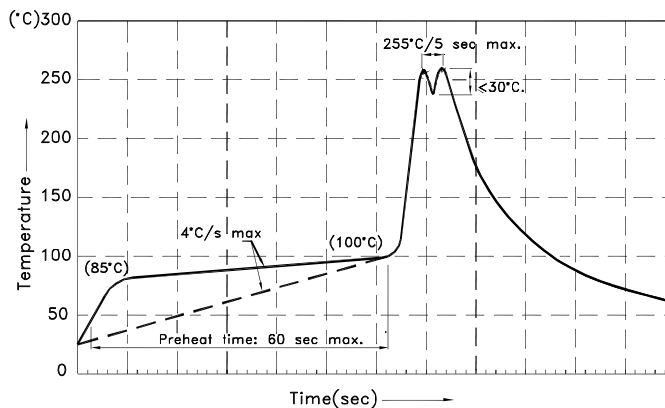
Correpond to Fig. 9  
Test condition

$I_F = 4\text{mA}$   
 $V_{CE} = 2\text{V}$   
 $d = 1\text{mm}$



## Wave Soldering Profile

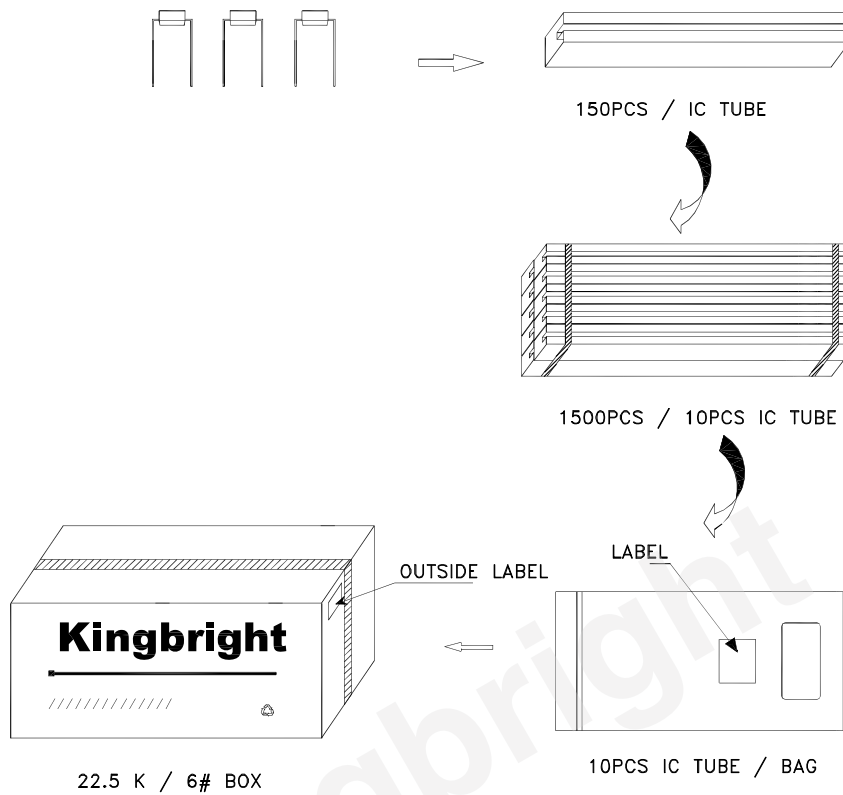
Wave Soldering Profile For Lead-free Through-hole LED.




**Notes:**

1. Recommend pre-heat temperature of 105°C or less (as measured with a thermocouple attached to the LED pins) prior to immersion in the solder wave with a maximum solder bath temperature of 260°C
2. Peak wave soldering temperature between 245°C ~ 255°C for 3 sec (5 sec max).
3. Do not apply stress to the epoxy resin while the temperature is above 85°C.
4. Fixtures should not incur stress on the component when mounting and during soldering process.
5. SAC 305 solder alloy is recommended.
6. No more than one wave soldering pass.

## PACKING & LABEL SPECIFICATIONS



<b>Kingbright</b>					
P/NO: KTIRxxx					
QTY: 1500 pcs	Q.C.	<table border="1"> <tr> <td style="text-align: center;">Q C</td> </tr> <tr> <td style="text-align: center;">XX XX XXXX</td> </tr> <tr> <td style="text-align: center;">PASSED</td> </tr> </table>	Q C	XX XX XXXX	PASSED
Q C					
XX XX XXXX					
PASSED					
S/N: XXXX					
CODE: XXX					
LOT NO:					
					
XXXXXXXXXXXXXXXXXX					
RoHS Compliant					

### Terms and conditions for the usage of this document

1. The information included in this document reflects representative usage scenarios and is intended for technical reference only.
2. The part number, type, and specifications mentioned in this document are subject to future change and improvement without notice. Before production usage customer should refer to the latest datasheet for the updated specifications.
3. When using the products referenced in this document, please make sure the product is being operated within the environmental and electrical limits specified in the datasheet. If customer usage exceeds the specified limits, Kingbright will not be responsible for any subsequent issues.
4. The information in this document applies to typical usage in consumer electronics applications. If customer's application has special reliability requirements or have life-threatening liabilities, such as automotive or medical usage, please consult with Kingbright representative for further assistance.
5. The contents and information of this document may not be reproduced or re-transmitted without permission by Kingbright.
6. All design applications should refer to Kingbright application notes available at [http://www.kingbright.com/application\\_notes](http://www.kingbright.com/application_notes)