

## Visible Light Sensing Photodiode(a-Si) KVS1001

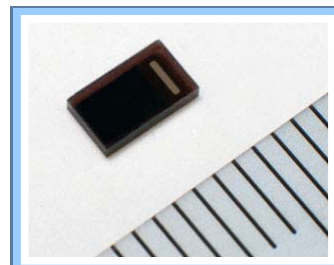
### Description

The KVS1001 is the optical sensor with high sensitivity of visible light.

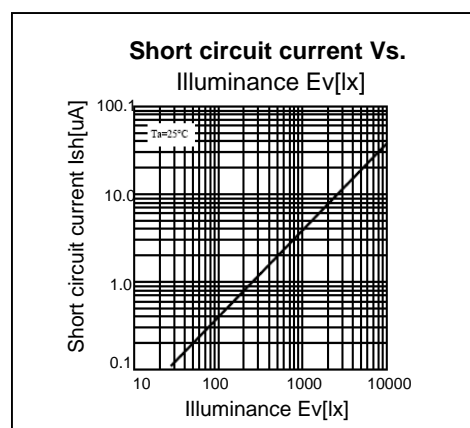
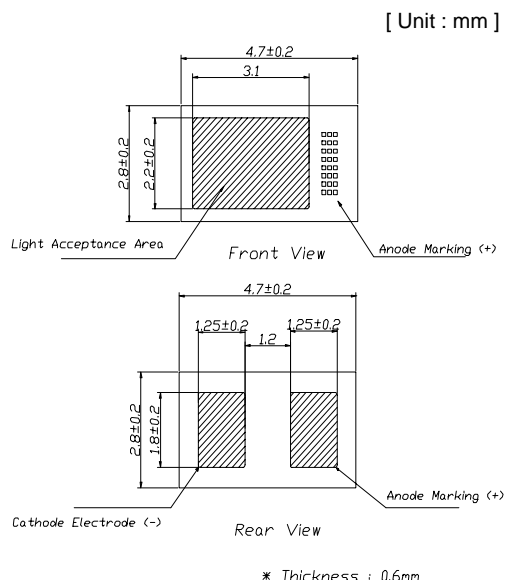
It is an amorphous silicon(a-Si) based device mounted on the glass substrate

### Features

- High Sensitivity in a visible Area, but Little Sensitivity in others (UV and IR)
- Environment Friendly Product (not contain Cadmium)
- Surface Mount with Pb-free Soldering



### Outline Dimensions



### Applications

- Brightness Detection of CRT, LCD
- Beam Position Detection of Projection TV
- Camera AE Sensor (Replace for CdS cell)
- Control of the Lighting in a Car, Room, etc

### Characteristics

[Ta= 25°C ]

Description	Symbol	Condition	Min.	Typ.	Max.	Unit
Reverse Voltage	VR		-	5	-	V
Open circuit voltage	Voc	Ev= FL 100lx <sup>*1</sup>	0.35	0.40	-	V
Short circuit current	Ish		0.35	0.39	-	uA
Dark current	ID	VR=1V	-	0.5	5	nA
Spectral sensitivity	$\lambda$	5 ~ 10%	350~750			nm
Peak Wavelength	$\lambda_p$		-	590	-	nm
Operating Temperature	Topr		-10 °C ~ 60°C			°C
Storage Temperature	Tstg		-30 °C ~ 80°C			°C
Soldering Temperature	Tsol		260 ± 5(Max 5sec)			°C

\*1. Normal White Fluorescent Light