

# TRADITIONAL HIGH-SPEED FUSES

150/250/600 Vac • Very Fast-Acting • 1-1200 A



## Specifications

### Voltage Ratings

- L15S:** 150 Vac/dc (1 – 60 A)  
150 Vac (70 – 1000 A)  
100 Vdc (70 – 1000 A)
- L25S:** 250 Vac/dc (1 – 200 A)  
250 Vac (225 – 800 A)  
200 Vdc (225 – 800 A)  
L25S series fuses are Littelfuse Certified for DC ratings shown in Rating Table.
- L60S:** 600 Vac
- OKLC:** 600 Vac

### Interrupting Rating

- AC:** 200 kA rms (L15S series 100 kA)
- DC:** 20 kA

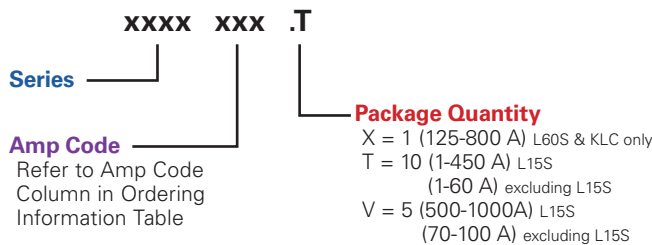
### Ampere Range

1 - 1000A (See Ordering Information Table for ratings available in each series)

### Approvals

UL Recognized (File: E71611)  
CSA Recognized (File: LR29862)

## Part Numbering System



## Recommended Fuse Holders

- 1LFS101/1LFS102..... 129
- LSCR001/LSCR002..... 127

## Web Resources

For additional information, visit: [littelfuse.com/high-speed](http://littelfuse.com/high-speed)

*Note: High-Speed fuses are designed for fixed installations. They are not intended for use in moving vehicle applications.*

## Ordering Information

| AMP CODE | SERIES ORDERING NUMBER |         |          |          |
|----------|------------------------|---------|----------|----------|
|          | L15S                   | L25S    | L60S     | OKLC†    |
| 001      | L15S001                | L25S001 | L60S001  | OKLC001  |
| 002      | L15S002                | L25S002 | L60S002  | OKLC002  |
| 003      | L15S003                | L25S003 | L60S003  | OKLC003  |
| 004      | L15S004                | L25S004 | L60S004  | OKLC004  |
| 005      | L15S005                | L25S005 | L60S005  | OKLC005  |
| 006      | L15S006                | L25S006 | L60S006  | OKLC006  |
| 007      | L15S007                | —       | —        | OKLC007  |
| 008      | L15S008                | L25S008 | L60S008  | OKLC008  |
| 009      | L15S009                | —       | —        | —        |
| 010      | L15S010                | L25S010 | L60S010  | OKLC010  |
| 012      | L15S012                | L25S012 | L60S012  | OKLC012  |
| 015      | L15S015                | L25S015 | L60S015  | OKLC015  |
| 17.5     | —                      | —       | L60S17.5 | OKLC17.5 |
| 020      | L15S020                | L25S020 | L60S020  | OKLC020  |
| 025      | L15S025                | L25S025 | L60S025  | OKLC025  |
| 030      | L15S030                | L25S030 | L60S030  | OKLC030  |
| 035      | L15S035                | L25S035 | L60S035  | OKLC035  |
| 040      | L15S040                | L25S040 | L60S040  | OKLC040  |
| 045      | L15S045                | L25S045 | L60S045  | OKLC045  |
| 050      | L15S050                | L25S050 | L60S050  | OKLC050  |
| 060      | L15S060                | L25S060 | L60S060  | OKLC060  |
| 070      | L15S070                | L25S070 | L60S070  | OKLC070  |
| 080      | L15S080                | L25S080 | L60S080  | OKLC080  |
| 090      | L15S090                | L25S090 | L60S090  | OKLC090  |
| 100      | L15S100                | L25S100 | L60S100  | OKLC100  |
| 110      | —                      | —       | —        | OKLC110  |
| 125      | L15S125                | L25S125 | L60S125  | OKLC125  |
| 150      | L15S150                | L25S150 | L60S150  | OKLC150  |
| 175      | —                      | L25S175 | L60S175  | OKLC175  |
| 200      | L15S200                | L25S200 | L60S200  | OKLC200  |
| 225      | —                      | L25S225 | L60S225  | OKLC225  |
| 250      | L15S250                | L25S250 | L60S250  | OKLC250  |
| 275      | —                      | L25S275 | —        | —        |
| 300      | L15S300                | L25S300 | L60S300  | OKLC300  |
| 350      | L15S350                | L25S350 | L60S350  | OKLC350  |
| 400      | L15S400                | L25S400 | L60S400  | OKLC400  |
| 450      | L15S450                | L25S450 | L60S450  | OKLC450  |
| 500      | L15S500                | L25S500 | L60S500  | OKLC500  |
| 550      | —                      | —       | —        | —        |
| 600      | L15S600                | L25S600 | L60S600  | OKLC600  |
| 700      | —                      | L25S700 | L60S700  | OKLC700  |
| 800      | L15S800                | L25S800 | L60S800  | OKLC800  |
| 1000     | L15S1000               | —       | —        | —        |

† OKLC series fuses are recommended for replacement use only.

# TRADITIONAL HIGH-SPEED FUSES

## Dimensions

| AMPERE RATING               | FIG. NO. | DIMENSIONS INCHES (MM) |            |            |            |           |           |           |         |
|-----------------------------|----------|------------------------|------------|------------|------------|-----------|-----------|-----------|---------|
|                             |          | A                      | B          | C          | D          | E         | F         | G         | H       |
| <b>L15S Series, 150 Vac</b> |          |                        |            |            |            |           |           |           |         |
| 1 – 30                      | 1        | 1½ (38.1)              | —          | ¾ (9.5)    | 1¾ (10.3)  | —         | —         | —         | —       |
| 31 – 60                     | 1        | 2 (50.8)               | —          | ⅝ (15.9)   | 1¾ (20.6)  | —         | —         | —         | —       |
| 61 – 450                    | 3        | 1⅝ (29.4)              | 1⅞ (47.6)  | 2¾ (55.6)  | 2⅞ (67.5)  | 1 (25.4)  | 4¾ (17.1) | ⅝ (7.9)   | ¾ (4.8) |
| 451 – 1000                  | 3        | 1¼ (31.8)              | 1⅝ (49.2)  | 2⅞ (65.1)  | 3½ (88.9)  | 1½ (38.1) | 1 (25.4)  | 1¾ (10.3) | ¼ (6.4) |
| <b>L25S Series, 250 Vac</b> |          |                        |            |            |            |           |           |           |         |
| 1 – 30                      | 1        | 2 (50.8)               | —          | ½ (12.7)   | ⅞ (14.3)   | —         | —         | —         | —       |
| 31 – 60                     | 2        | 1⅝ (41.3)              | 2¼ (57.2)  | 2½ (63.5)  | 3¾ (81.0)  | 1¾ (20.6) | 2¾ (18.3) | 1½ (8.7)  | ⅓ (3.2) |
| 61 – 200                    | 3        | 1⅝ (41.3)              | 2⅝ (58.7)  | 2⅞ (61.9)  | 3⅞ (79.4)  | 1⅞ (31.0) | 1 (25.4)  | ⅝ (7.9)   | ¾ (4.8) |
| 201 – 700                   | 3        | 1⅞ (40.5)              | 2⅞ (57.9)  | 2⅞ (73.8)  | 3⅞ (97.6)  | 1½ (38.1) | 1 (25.4)  | 1¾ (10.3) | ¼ (6.4) |
| 701 – 800                   | 3        | 1⅞ (40.5)              | 2⅞ (57.9)  | 2⅞ (73.8)  | 3⅞ (97.6)  | 2 (50.8)  | 1½ (38.1) | 1¾ (10.3) | ¼ (6.4) |
| <b>L60S Series, 600 Vac</b> |          |                        |            |            |            |           |           |           |         |
| 1 – 30                      | 1        | 5 (127.0)              | —          | ⅝ (15.9)   | 1¾ (20.6)  | —         | —         | —         | —       |
| 31 – 60                     | 2        | 2⅝ (70.6)              | 3⅞ (87.3)  | 3⅞ (93.7)  | 4¾ (111.1) | 1¾ (20.6) | 2¾ (18.3) | 1½ (8.7)  | ⅓ (3.2) |
| 61 – 100                    | 2        | 2⅞ (73.8)              | 3⅞ (89.7)  | 3⅞ (96.0)  | 4⅝ (113.5) | 1⅞ (27.0) | 2¾ (18.3) | 1½ (8.7)  | ⅓ (3.2) |
| 101 – 200                   | 2        | 2⅞ (73.8)              | 3⅞ (90.5)  | 3¾ (95.3)  | 4⅝ (111.9) | 1⅞ (33.3) | 1 (25.4)  | ⅝ (7.9)   | ¾ (4.8) |
| 201 – 400                   | 2        | 2⅞ (73.8)              | 3⅞ (100.8) | 4⅝ (105.6) | 5⅞ (130.2) | 1¾ (40.1) | 1 (25.4)  | 1¾ (10.3) | ¼ (6.4) |
| 401 – 600                   | 2        | 2⅞ (73.0)              | 3⅞ (100.8) | 4⅞ (105.2) | 5⅞ (130.2) | 2⅞ (52.8) | 1½ (38.1) | 1¾ (10.3) | ¼ (6.4) |
| 601 – 800                   | 2        | 3⅞ (77.0)              | 5⅞ (133.4) | 5⅞ (135.7) | 7¼ (184.2) | 2½ (63.5) | 2 (50.8)  | 1¾ (13.5) | ⅓ (9.5) |
| <b>KLC Series, 600 Vac</b>  |          |                        |            |            |            |           |           |           |         |
| 1 – 30                      | 2        | 1⅞ (47.6)              | 2½ (63.5)  | —          | 2⅞ (73.0)  | ⅞ (14.3)  | 1¾ (10.3) | ¼ (6.4)   | ¾ (1.2) |
| 31 – 60                     | 2        | 2¾ (69.9)              | 3⅞ (85.7)  | 3⅞ (92.1)  | 4⅝ (109.5) | 1¾ (20.6) | 2¾ (18.3) | 1½ (8.7)  | ⅓ (3.2) |
| 61 – 100                    | 3        | 2⅞ (73.0)              | 3⅞ (92.9)  | 4⅞ (103.2) | 5 (127.0)  | 1 (25.4)  | ¾ (19.1)  | 1¾ (10.3) | ⅓ (3.2) |
| 101 – 200                   | 3        | 2⅞ (72.2)              | 3⅞ (89.7)  | 4⅞ (111.1) | 5⅞ (129.4) | 1½ (38.1) | 1 (25.4)  | 1¾ (10.3) | ¼ (6.4) |
| 201 – 400                   | 3        | 2⅞ (72.2)              | 4⅞ (118.3) | 4⅞ (123.0) | 6¼ (158.8) | 2 (50.8)  | 1⅞ (41.3) | ⅞ (14.3)  | ¼ (6.4) |
| 401 – 800                   | 3        | 2⅞ (72.2)              | 4⅞ (118.3) | 5⅞ (135.7) | 6¼ (158.8) | 2½ (63.5) | 2 (50.8)  | ⅞ (14.3)  | ⅓ (9.5) |

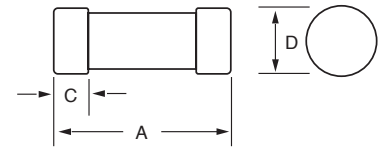


Fig. 1

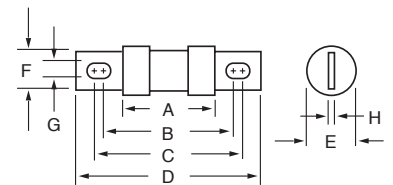


Fig. 2

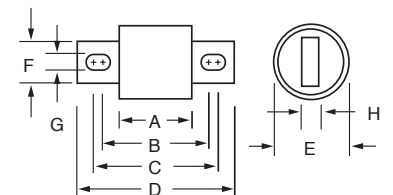


Fig. 3

*Note: High-Speed fuses are designed for fixed installations. They are not intended for use in moving vehicle applications.*

**Disclaimer Notice** - Littelfuse products are not designed for, and shall not be used for, any purpose (including, without limitation, automotive, military, aerospace, medical, life-saving, life-sustaining or nuclear facility applications, devices intended for surgical implant into the body, or any other application in which the failure or lack of desired operation of the product may result in personal injury, death, or property damage) other than those expressly set forth in applicable Littelfuse product documentation. Warranties granted by Littelfuse shall be deemed void for products used for any purpose not expressly set forth in applicable Littelfuse documentation. Littelfuse shall not be liable for any claims or damages arising out of products used in applications not expressly intended by Littelfuse as set forth in applicable Littelfuse documentation. The sale and use of Littelfuse products is subject to Littelfuse Terms and Conditions of Sale, unless otherwise agreed by Littelfuse.

[Littelfuse.com/Product-Disclaimer](http://Littelfuse.com/Product-Disclaimer)