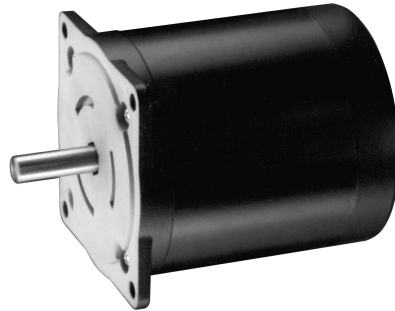


SIZE
34
3.38"
DIA

Rotary Hybrid Stepping Motor 1.8°

Conventional



EADmotors Size 34 hybrid DC stepping motors are precision bi-directional devices with position accuracy of $\pm 3\%$ non-cumulative.

Motors are totally enclosed with permanently lubricated ball bearings.

Standard motors have 4 or 6 leads. Motors with 5 or 8 leads can be furnished to meet existing applications. These motors are also available in 1.875 and 5 degree step angles.

EADmotors specializes in meeting the individual requirements of each application and offers engineering assistance for your design requirements.

Electrical Ratings

Model Number	Number of Leads	Unipolar Connection					Bipolar Connection					Holding Torque (oz-in)	Rotor Inertia (oz-in-sec ²)	Weight (ounces)
		Phase Voltage (VDC)	Phase Current (amps)	Phase Resistance (ohms)	Phase Inductance (mH)	Holding Torque (oz-in)	Phase Voltage (VDC)	Phase Current (amps)	Phase Resistance (ohms)	Phase Inductance (mH)				
LA34AGK-1	6	1.70	4.72	0.36	1.62	188	2.4	3.34	0.72	6.48	235	0.0091	48	
LA34AGK-2	6	2.60	3.06	0.85	4.15	188	3.7	2.17	1.70	16.60	235			
LA34AGK-4	6	5.30	1.61	3.30	17.50	188	7.5	1.14	6.60	70.00	235			
LA34AGK-9	6	12.00	0.67	18.00	80.00	188	17.0	0.47	36.00	320.00	235			
LA34AGK-10	6	24.00	0.33	72.00	315.00	188	34.0	0.24	144.00	1260.00	235			
LA34AGK-M200	4						4.4	2.00	2.2	20.4	235			
LA34AGK-M300	4						2.9	3.00	0.96	9.07	235			
LA34AGK-M400	4						2.2	4.00	0.55	5.1	235			
LA34AGK-M600	4						1.5	6.00	0.24	2.27	235			
LA34BJK-1	6	2.50	4.55	0.55	2.75	336	3.5	3.18	1.10	11.00	420			0.0170
LA34BJK-2	6	3.00	4.00	0.75	3.60	336	4.2	2.80	1.50	14.40	420			
LA34BJK-30	6	6.00	2.00	3.00	16.45	336	8.5	1.42	6.00	65.80	420			
LA34BJK-31	6	12.00	1.04	11.50	64.20	336	17.0	0.74	23.00	256.80	420			
LA34BJK-32	6	24.00	0.55	44.00	237.00	336	34.0	0.39	88.00	948.00	420			
LA34BJK-M200	4						6.0	2.00	3.0	33.2	420			
LA34BJK-M300	4						4.0	3.00	1.33	14.8	420			
LA34BJK-M400	4						3.0	4.00	0.75	8.3	420			
LA34BJK-M600	4						2.0	6.00	0.33	3.7	420			
LA34CKK-2	6	2.20	7.10	0.31	1.81	496	3.1	5.00	0.62	7.24	620	0.0265	121	
LA34CKK-1	6	2.80	5.38	0.52	3.10	496	4.0	3.85	1.04	12.40	620			
LA34CKK-3	6	4.30	3.58	1.20	7.65	496	6.1	2.54	2.40	30.60	620			
LA34CKK-37	6	6.00	2.31	2.60	15.50	496	8.5	1.63	5.20	62.00	620			
LA34CKK-38	6	12.00	1.17	10.30	60.00	496	17.0	0.82	20.60	240.00	620			
LA34CKK-39	6	24.00	0.59	41.00	249.00	496	34.0	0.41	82.00	996.00	620			
LA34CKK-M200	4						7.7	2.00	3.8	54.5	620			
LA34CKK-M300	4						5.1	3.00	1.7	24.2	620			
LA34CKK-M400	4						3.8	4.00	0.96	13.6	620			
LA34CKK-M600	4						2.6	6.00	0.43	6.1	620			

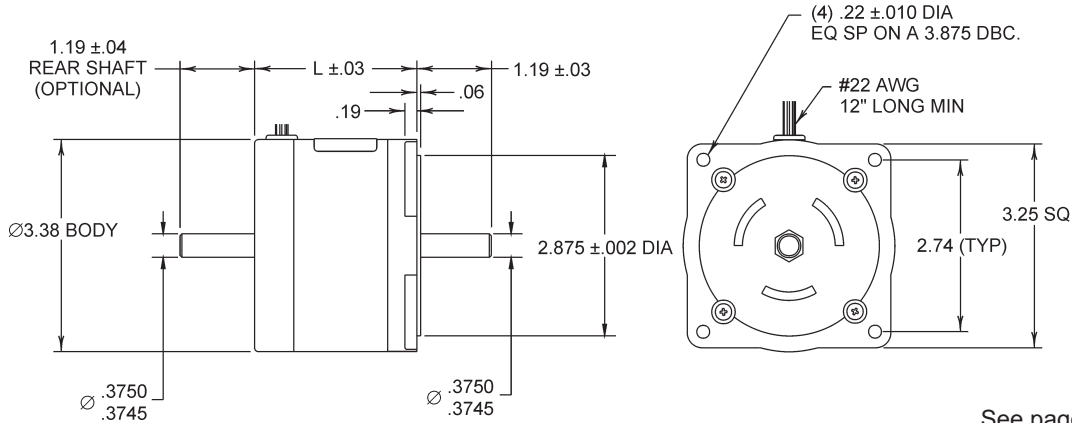
Solutions in motion



Rotary Hybrid Stepping Motor 1.8°

Conventional

SIZE
34
3.38"
DIA

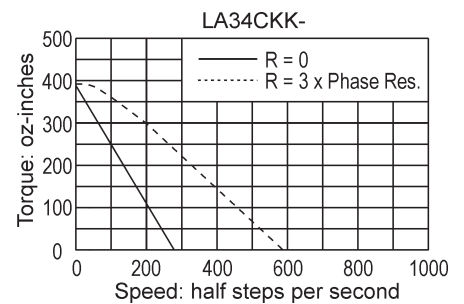
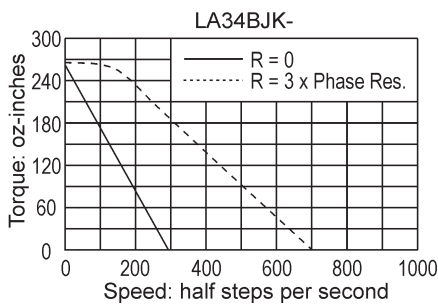
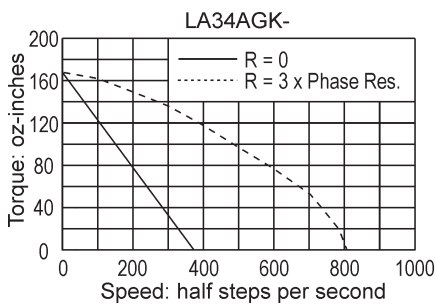


Size 34	
Model Series	Dimension "L" (inches)
LA34AGK	2.45
LA34BJK	3.70
LA34CKK	5.08

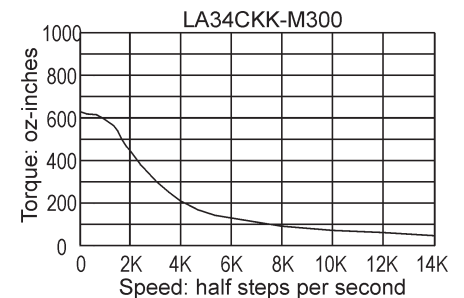
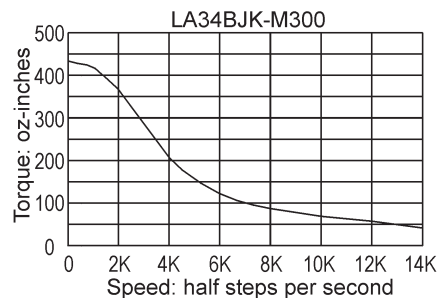
See page 38 for Connection Diagrams.
For the rear shaft option, use the suffix "R" (for example, LA34AGK-1R).

Pullout Torque Speed Curves

Typical Unipolar Performance (6 Lead Motor): Constant Voltage Drive (L/R), 2 Phase On



Typical Bipolar Performance: 80 VDC Power Supply, 3 Amps/Phase



Solutions in motion

