

**SANYO Semiconductors****DATA SHEET**

LA42207

— Monolithic Linear IC
Audio Output for TV application
7W × 2ch Power Amplifier

Overview

The LA42207 is a 7W 2-channel power amplifier IC and optimal for use as the audio output power amplifier in TV application

Functions

- 7W × 2 channels ($V_{CC} = 11.5V$, $R_L = 8\Omega$)
- Built-in standby function.
- Built-in mute function.
- Built-in various protection circuit (short to V_{CC} /short to ground/load shorting/overheating).

Specifications**Maximum Ratings** at $T_a = 25^\circ C$

Parameter	Symbol	Conditions	Ratings	Unit
Maximum supply voltage	$V_{CC\ max}$	No signal	16	V
Allowable power dissipation	$P_d\ max$	Infinitely large heat sink	30	W
Maximum output current	$I_O\ peak$	Per channel	1.0	A
Maximum junction temperature	$T_j\ max$		150	$^\circ C$
Thermal resistance	θ_{jc}		2.5	$^\circ C/W$
Operating temperature	T_{opr}		-20 to +75	$^\circ C$
Storage temperature	T_{stg}		-40 to +150	$^\circ C$

Operating Conditions at $T_a = 25^\circ C$

Parameter	Symbol	Conditions	Ratings	Unit
Recommended supply voltage	V_{CC}		11.5	V
Recommended load resistance	R_L		8	Ω
Allowable operating supply voltage range	$V_{CC\ op}$	Under conditions such that maximum ratings are not exceeded	7 to 15	V

■ Any and all SANYO Semiconductor Co.,Ltd. products described or contained herein are, with regard to "standard application", intended for the use as general electronics equipment (home appliances, AV equipment, communication device, office equipment, industrial equipment etc.). The products mentioned herein shall not be intended for use for any "special application" (medical equipment whose purpose is to sustain life, aerospace instrument, nuclear control device, burning appliances, transportation machine, traffic signal system, safety equipment etc.) that shall require extremely high level of reliability and can directly threaten human lives in case of failure or malfunction of the product or may cause harm to human bodies, nor shall they grant any guarantee thereof. If you should intend to use our products for applications outside the standard applications of our customer who is considering such use and/or outside the scope of our intended standard applications, please consult with us prior to the intended use. If there is no consultation or inquiry before the intended use, our customer shall be solely responsible for the use.

■ Specifications of any and all SANYO Semiconductor Co.,Ltd. products described or contained herein stipulate the performance, characteristics, and functions of the described products in the independent state, and are not guarantees of the performance, characteristics, and functions of the described products as mounted in the customer's products or equipment. To verify symptoms and states that cannot be evaluated in an independent device, the customer should always evaluate and test devices mounted in the customer's products or equipment.

SANYO Semiconductor Co., Ltd.

TOKYO OFFICE Tokyo Bldg., 1-10, 1 Chome, Ueno, Taito-ku, TOKYO, 110-8534 JAPAN

Electrical Characteristics at Ta = 25°C, VCC = 11.5V, RL = 8Ω, f = 1kHz, Rg = 600Ω

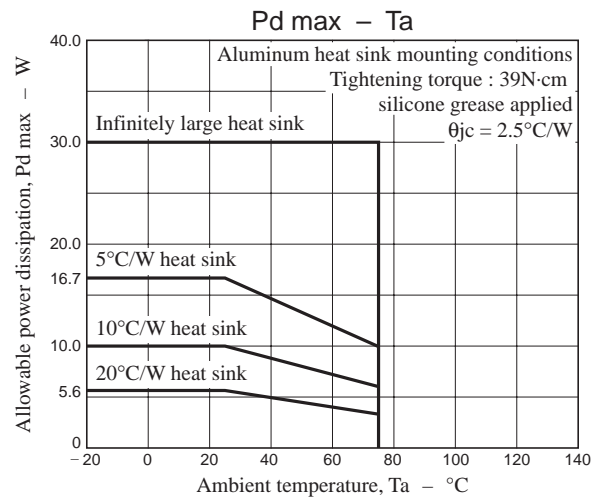
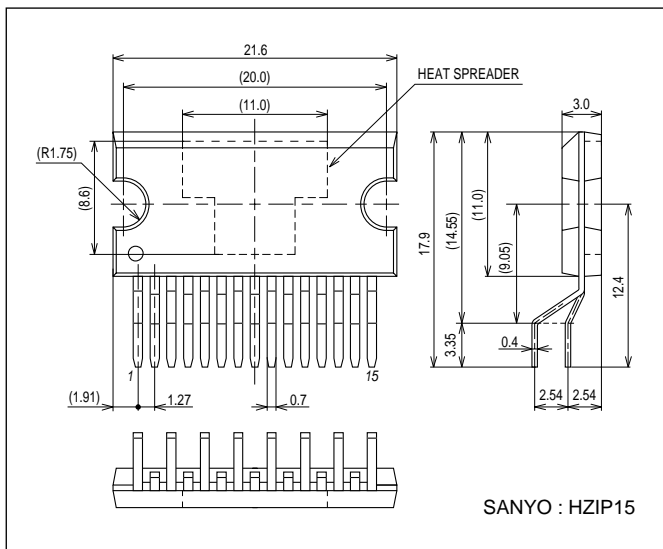
Parameter	Symbol	Conditions	Ratings			Unit
			min	typ	max	
Standby current	Ist	Amplifier OFF		0	10	μA
Quiescent current	I _{CCO}	Rg = 0, RL = OPEN	35	70	140	mA
Output power	PO1	THD = 10%	6	7		W
Total harmonic distortion	THD	PO = 1W		0.06	0.2	%
Voltage gain	VG	VO = 0dBm	30	32	34	dB
Output noise voltage	VNO	Rg = 0, BPF = 20Hz to 20kHz		0.2	0.4	mVrms
Ripple rejection ratio	SVRR	Rg = 0, fR = 100Hz, VCCR = 0dBm	40	50		dB
Channel separation	CH.Sep	Rg = 10kΩ, VO = 0dBm	50	60		dB
Mute attenuation value	ATT	VO = 1Vrms, BPF = 20Hz to 20kHz	80	90		dB
Mute control voltage (pin 7)	Vmute	Mute ON *1	1.5		3.0	V
		Mute OFF	0		0.5	V
Standby control voltage (pin 6)	Vst	Amplifier ON *1	2.5		VCC	V
		Amplifier OFF	0		0.5	V
Input resistance	Ri		21	30	39	kΩ

*1 : Note that the standby pin (pin 6) and MUTE pin (pin 7) incorporate the anti-electrostatic diode allowing the current to flow through the diode when the potential of VCC (pin 9) decreases below that of pin 6 or 7.

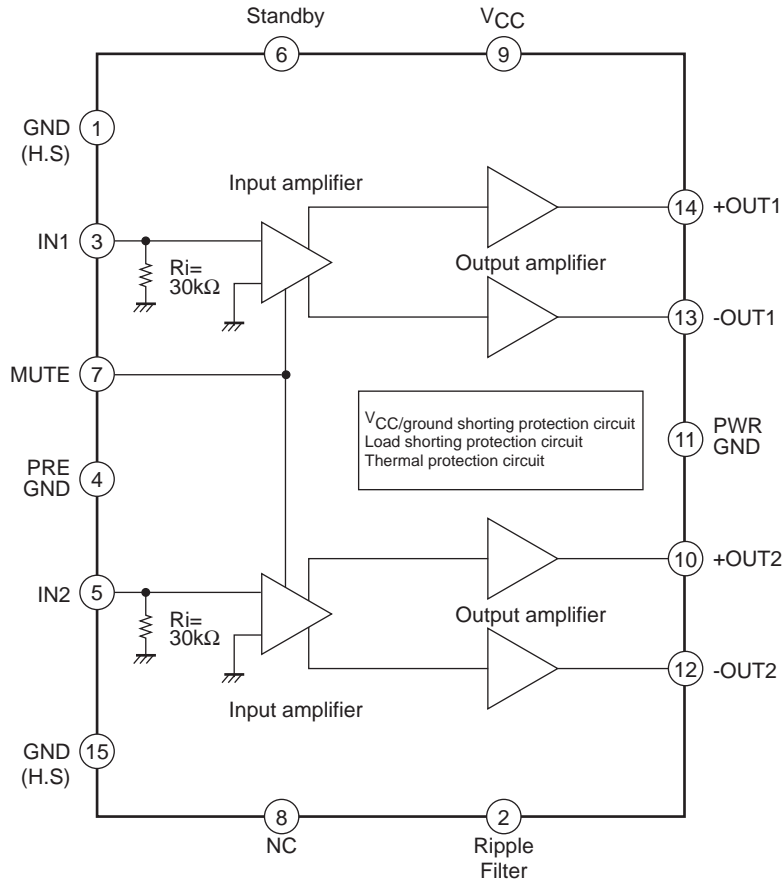
Package Dimensions

unit : mm (typ)

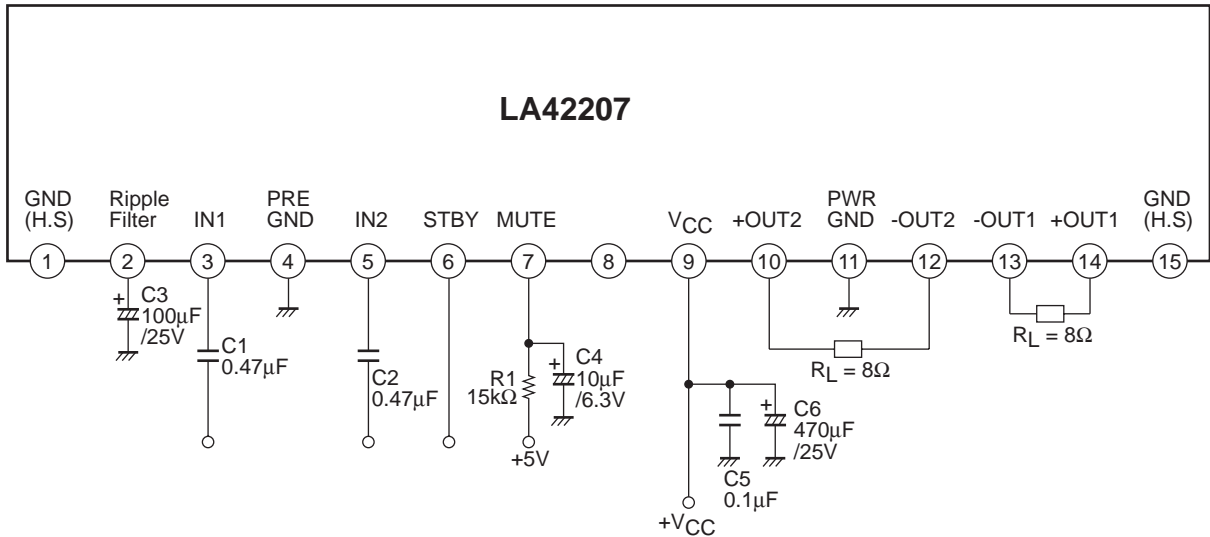
3336



Block Diagram



Test Circuit



* Pin 8 : NC. This pin must be left open.

* Pins 1 and 15 are connected to the heat sink. They must be connected to power and ground.

Pin Voltage

Conditions : VCC = 11.5V, STBY = 5V

Pin No.	1	2	3	4	5	6	7	8	9	10	11	12	13	14	15
Pin	GND (H.S)	Ripple Filter	IN1	Pre GND	IN2	STBY	Mute	N.C.	VCC	+OUT2	Power GND	-OUT2	-OUT1	+OUT1	GND (H.S)
Pin voltage (V)	0	11.2	0.7	0	0.7	5	0	-	11.5	5.8	0	5.8	5.8	5.8	0

External Components

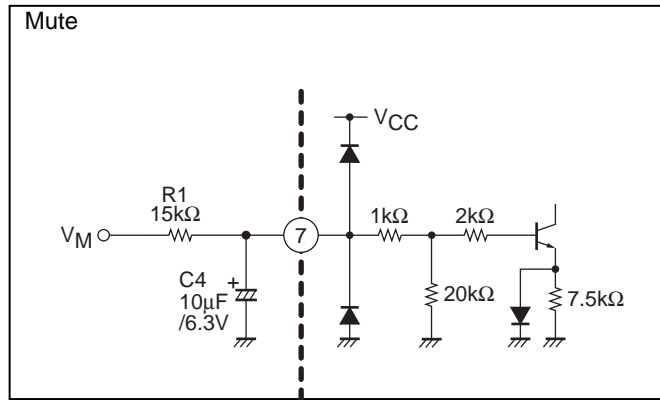
- C1, C2 : Input coupling capacitors, whose capacity is recommended to be $0.47\mu\text{F}$. The input pin potential is about 0.7V .
- C3 : Capacitor for ripple filter and amplifier starting time, whose capacity is recommended to be $100\mu\text{F}$.
- C4, R1 : Capacitor and resistor for muting. C4 is necessary even when the MUTE function is not used.
- C5 : Capacitor to enhance the tolerance of oscillation, whose capacity is recommended to be $0.1\mu\text{F}$.
- C6 : Power supply capacitor.

1. Muting function (pin 7)

MUTE ON when the pin 7 voltage is 1.5V (minimum) or more.

Set the V_M application voltage so that the pin 7 voltage becomes 1.5V or more.

In the MUTE mode, the constant is determined from CR . Since this may cause pop sound at MUTE ON/OFF, determine the constant with due consideration. C4 is also related to pop sound when the amplifier is turned ON, so that this is necessary even when the MUTE function is not to be used.



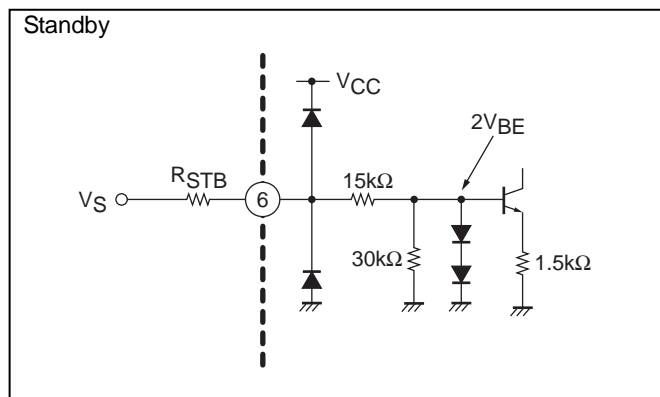
2. Standby function (pin 6)

By means of controlling pin 6 to high and low, the power Supply can be set to ON and OFF.

Control voltage of pin 6

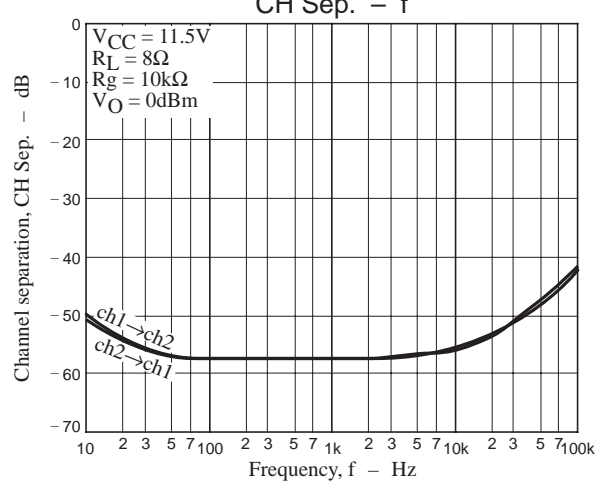
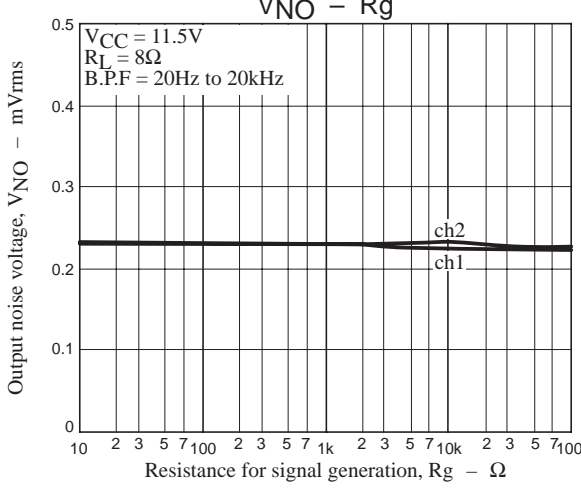
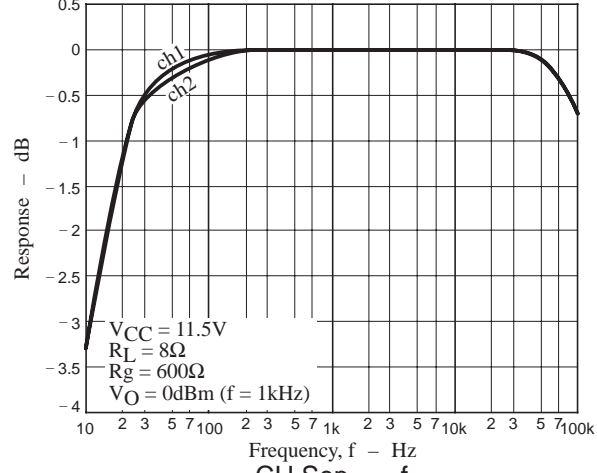
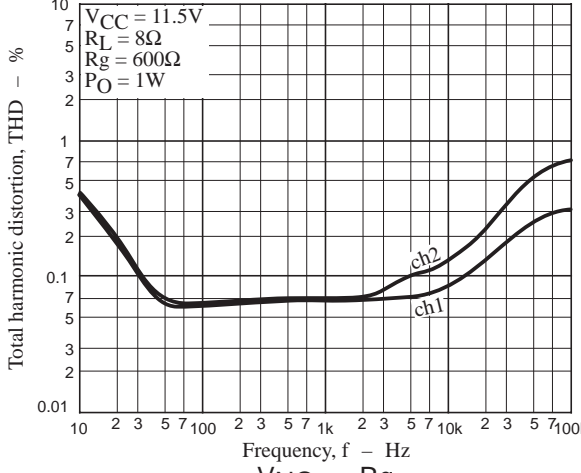
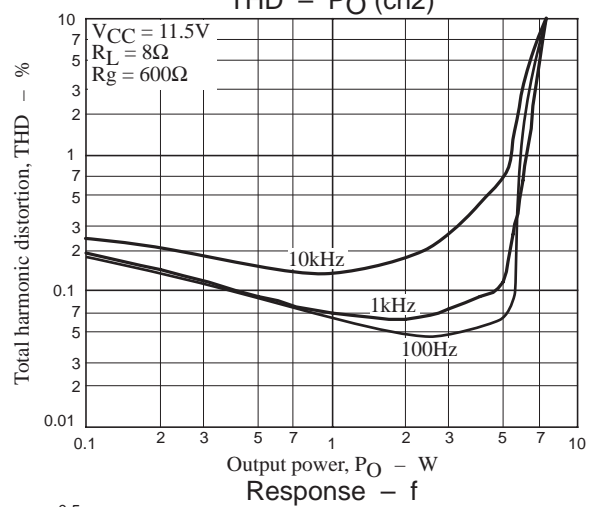
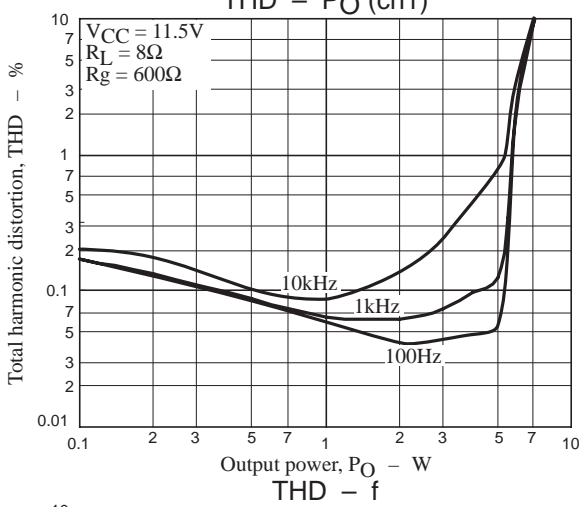
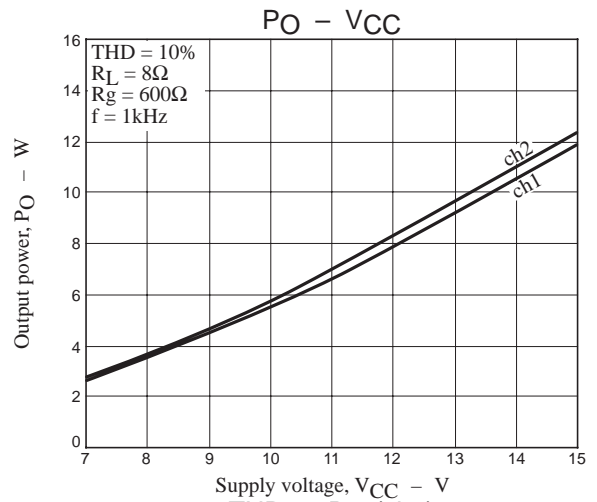
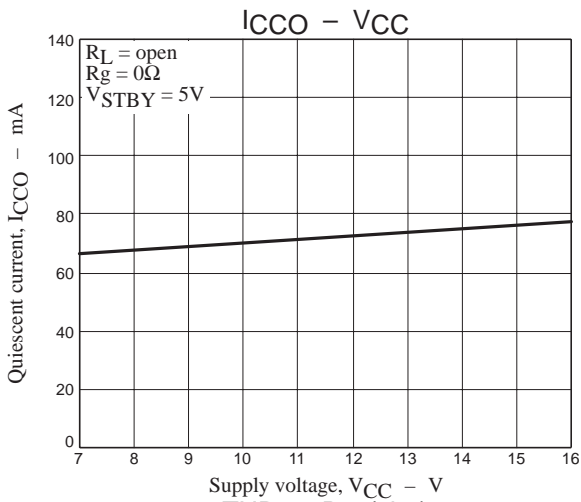
Pin 6 voltage	Amplifier	Standby
0 to 0.5	Off	On
2.5 to V_{CC}	On	Off

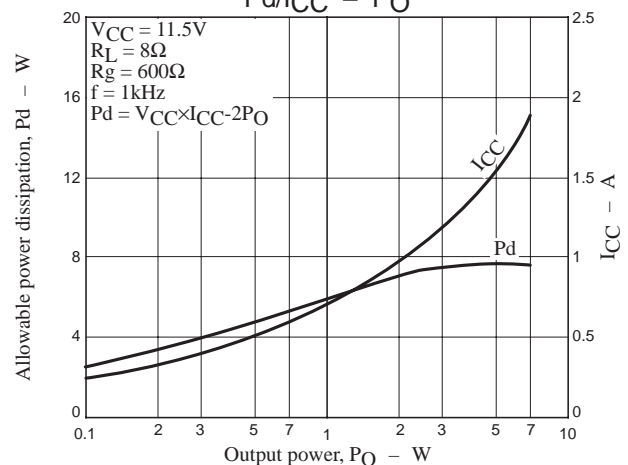
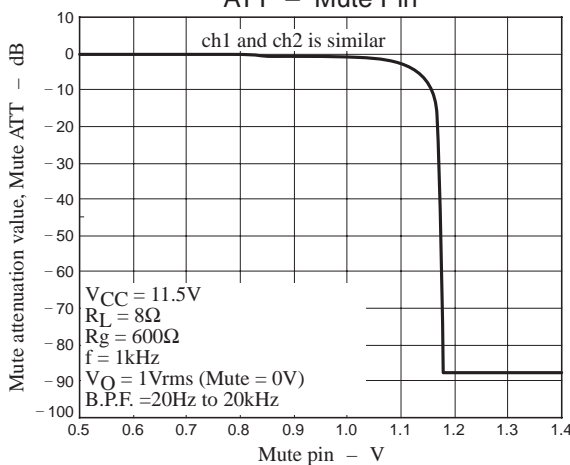
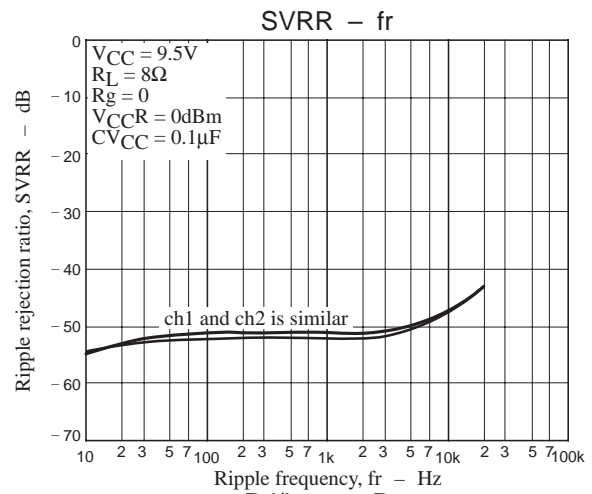
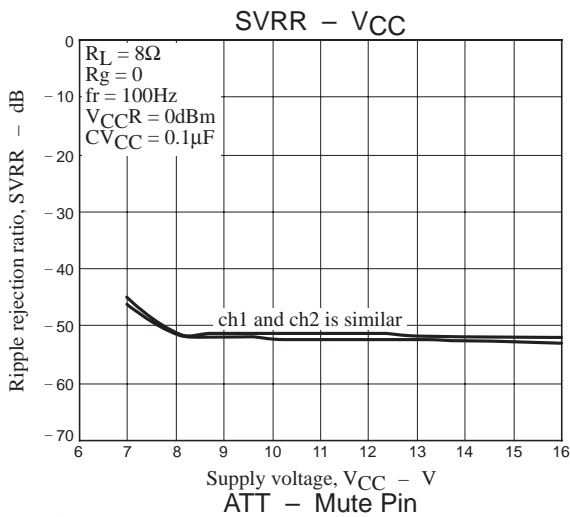
When the impression voltage of V_S is high, I want to stop pin6 inflow current. Restriction resistance (R_{STB}) is inserted in a case.



Cautions for use

1. This product incorporates lightning (power supply – output short-circuit), ground-fault (GND – output short-circuit) and load short-circuit protective circuits, which are activated in case of abnormal connection.
These circuits are active while abnormal connection continues, and automatically reset when the abnormal state is removed.
Depending on the operation conditions, the protective circuits may remain locked even when the abnormal state is canceled, keeping the protective circuits active. In such an event, enter the standby state or turn OFF power supply once to reset.
2. This product incorporates the thermal protective circuit, which is activated when the junction temperature (T_j) rises to about 160°C or more. In this case, the output is controlled gradually to the attenuated state.
3. When this is used near the maximum rating, even the smallest change in the conditions may cause the operation to exceed the maximum ratings, possibly leading to the breakdown. Take sufficient margin for the supply voltage to ensure that the product is operated within the maximum ratings.





- SANYO Semiconductor Co.,Ltd. assumes no responsibility for equipment failures that result from using products at values that exceed, even momentarily, rated values (such as maximum ratings, operating condition ranges, or other parameters) listed in products specifications of any and all SANYO Semiconductor Co.,Ltd. products described or contained herein.
- SANYO Semiconductor Co.,Ltd. strives to supply high-quality high-reliability products, however, any and all semiconductor products fail or malfunction with some probability. It is possible that these probabilistic failures or malfunction could give rise to accidents or events that could endanger human lives, trouble that could give rise to smoke or fire, or accidents that could cause damage to other property. When designing equipment, adopt safety measures so that these kinds of accidents or events cannot occur. Such measures include but are not limited to protective circuits and error prevention circuits for safe design, redundant design, and structural design.
- In the event that any or all SANYO Semiconductor Co.,Ltd. products described or contained herein are controlled under any of applicable local export control laws and regulations, such products may require the export license from the authorities concerned in accordance with the above law.
- No part of this publication may be reproduced or transmitted in any form or by any means, electronic or mechanical, including photocopying and recording, or any information storage or retrieval system, or otherwise, without the prior written consent of SANYO Semiconductor Co.,Ltd.
- Any and all information described or contained herein are subject to change without notice due to product/technology improvement, etc. When designing equipment, refer to the "Delivery Specification" for the SANYO Semiconductor Co.,Ltd. product that you intend to use.
- Information (including circuit diagrams and circuit parameters) herein is for example only; it is not guaranteed for volume production.
- Upon using the technical information or products described herein, neither warranty nor license shall be granted with regard to intellectual property rights or any other rights of SANYO Semiconductor Co.,Ltd. or any third party. SANYO Semiconductor Co.,Ltd. shall not be liable for any claim or suits with regard to a third party's intellectual property rights which has resulted from the use of the technical information and products mentioned above.

This catalog provides information as of March, 2008. Specifications and information herein are subject to change without notice.