

**SANYO**

No.4468A

**LA4590W****1.5 V Stereo Headphone Preamplifier  
and Power Amplifier****Overview**

The LA4590W is a system IC that collects the functions required for a playback set in a single chip, and reduces the number of required external components. Furthermore, a recording system can be formed by combining the LA4590W with the LA3235W.

**Functions**

- Stereo preamplifier (including functions for auto-reverse, metal/normal tape switching, and muting)
- Stereo power amplifier (including OCL and muting functions)
- Two ripple filters (single channel on/off switching)
- Low boost (BTL operation at low frequencies)
- AMS (inter-station detection function)
- Power switch

**Features**

- Preamplifier requires no NF capacitors.
- Virtual ground impedance is reduced by built-in  $V_{REF}$  amplifier.
- Ripple filter oscillation suppression requires no capacitors.
- Power output available when low boost is on.  
( $P_o = 21 \text{ mW}/V_{CC} = 1.2 \text{ V}$ ,  $f = 100 \text{ Hz}$ )
- High-cut capacitors built into preamplifier and power amplifier. Buzz suppression
- Miniature package: SQFP-48 (0.5 mm pitch)

**Specifications****Maximum Ratings at  $T_a = 25^\circ\text{C}$** 

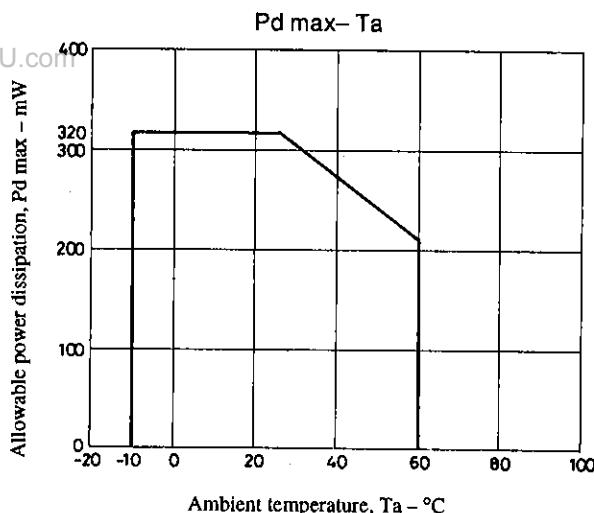
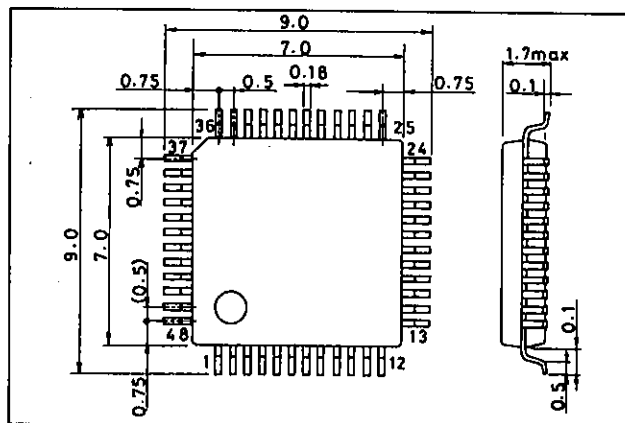
| Parameter                   | Symbol               | Conditions | Ratings     | Unit             |
|-----------------------------|----------------------|------------|-------------|------------------|
| Maximum supply voltage      | $V_{CC \text{ max}}$ |            | 3.0         | V                |
| Allowable power dissipation | $P_d \text{ max}$    |            | 320         | mW               |
| Operating temperature       | $T_{opr}$            |            | -10 to +60  | $^\circ\text{C}$ |
| Storage temperature         | $T_{sig}$            |            | -40 to +125 | $^\circ\text{C}$ |

**Operating Conditions at  $T_a = 25^\circ\text{C}$** 

| Parameter                      | Symbol              | Conditions | Ratings     | Unit |
|--------------------------------|---------------------|------------|-------------|------|
| Recommended supply voltage     | $V_{CC}$            |            | 1.5         | V    |
| Operating supply voltage range | $V_{CC \text{ op}}$ |            | 0.95 to 2.2 | V    |

**Package Dimensions**

unit: mm

**3163A-SQFP48**

## LA4590W

## Operating Characteristics

at  $T_a = 25^\circ\text{C}$ ,  $V_{CC} = 1.2\text{ V}$ ,  $f = 1\text{ kHz}$ ,  $0.775\text{ V} = 0\text{ dBm}$ ,  $R_L = 10\text{ k}\Omega$  (preamplifier),  
 $R_L = 16\text{ }\Omega$  (power amplifier)

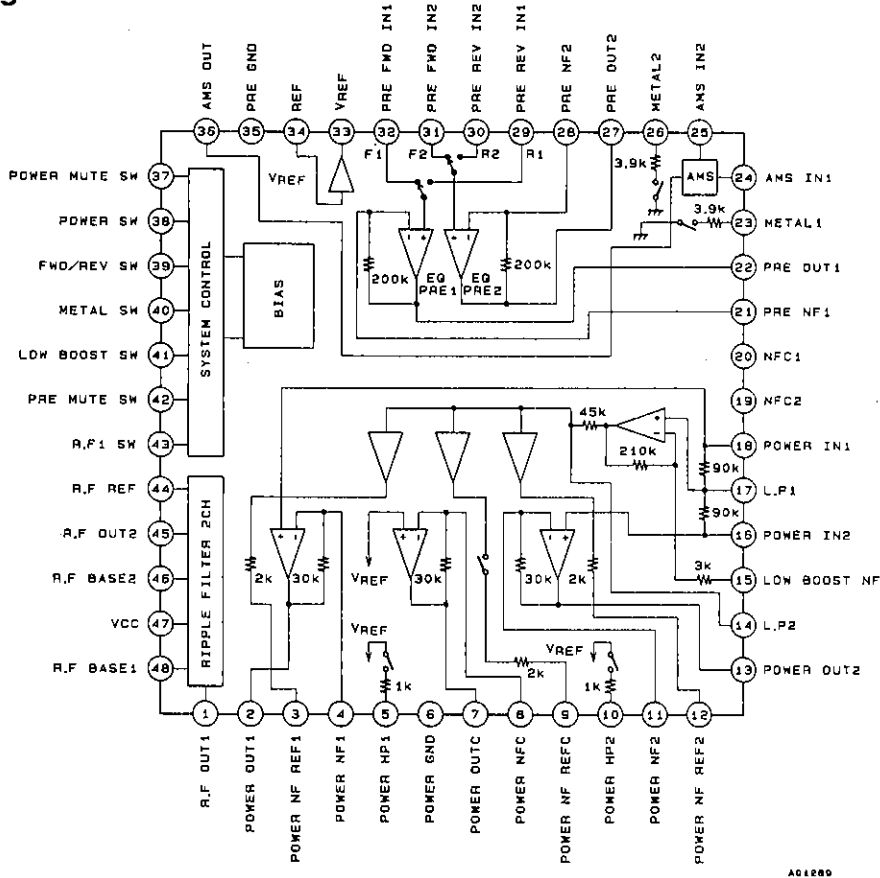
| Parameter                        | Symbol             | Conditions   | Ratings |      |      | Unit          |
|----------------------------------|--------------------|--|---------|------|------|---------------|
|                                  |                    |  | min     | typ  | max  |               |
| [Preamplifier + Power Amplifier] |                    |  |         |      |      |               |
| Quiescent current                | $I_{CCO1}$         | $R_g = 2.2\text{ k}\Omega$ , $R_V = 0\text{ }\Omega$   | 8       | 15   | 24   | mA            |
|                                  | $I_{CCO2}$         | With the power switch off  |         | 0.1  | 5    | $\mu\text{A}$ |
| Voltage gain (closed)            | $V_{GT}$           | $V_O = -20\text{ dBm}$ , $R_V = 10\text{ k}\Omega$   | 54      | 57   | 60   | dB            |
| [Preamplifier]                   |                    |  |         |      |      |               |
| Voltage gain (open)              | $V_{G0}$           | $V_O = -20\text{ dBm}$   | 60      | 67   |      | dB            |
| Voltage gain (closed)            | $V_{G1}$           | $V_O = -20\text{ dBm}$   | 34      | 35.3 | 37   | dB            |
|                                  | $V_{G2}$           | $V_O = -20\text{ dBm}$ , $f = 10\text{ kHz}$ , metal selected  | 25.5    | 28   | 30.5 | dB            |
| Maximum output voltage           | $V_{O\text{ max}}$ | THD = 1%   | 100     | 210  |      | mV            |
| Total harmonic distortion        | THD <sub>1</sub>   | $V_G = 35.3\text{ dB/NAB}$ , $V_O = 100\text{ mV}$   |         | 0.2  | 0.5  | %             |
| Equivalent input noise voltage   | $V_{NI}$           | $R_g = 2.2\text{ k}\Omega$ , BPF: 20 Hz to 20 kHz  |         | 1.3  | 3.0  | $\mu\text{V}$ |
| Crosstalk, inter-channel         | CT <sub>1</sub>    | $R_g = 2.2\text{ k}\Omega$ , 1 kHz TUNE, $V_O = -20\text{ dBm}$  | 45      | 56   |      | dB            |
| Crosstalk, F/R                   | CT <sub>2</sub>    | $R_g = 2.2\text{ k}\Omega$ , 1 kHz TUNE, $V_O = -20\text{ dBm}$  | 65      | 78   |      | dB            |
| Ripple rejection ratio           | Rr <sub>1</sub>    | $R_g = 2.2\text{ k}\Omega$ , $V_r = -30\text{ dBm}$ , $f_r = 100\text{ Hz}$<br>100 Hz TUNE   | 45      | 52   |      | dB            |
| Muted output voltage             | $V_{M1}$           | $V_{IN} = -40\text{ dBm}$ , 1 kHz TUNE, Muting on  |         |      | -90  | dBm           |
| [Low boost + Power Amplifier]    |                    |  |         |      |      |               |
| Voltage gain (closed)            | $V_{G3}$           | $V_O = -20\text{ dBm}$   | 20.5    | 23   | 25.5 | dB            |
|                                  | $V_{G4}$           | $V_O = -20\text{ dBm}$ , L.B. = on   | 20.5    | 23   | 25.5 | dB            |
|                                  | $V_{G5}$           | $V_O = -20\text{ dBm}$ , L.B. = on, $f = 10\text{ kHz}$  | 24.5    | 27.5 | 30.5 | dB            |
|                                  | $V_{G6}$           | $V_O = -20\text{ dBm}$ , L.B. = on, $f = 100\text{ Hz}$  | 30      | 34   | 38   | dB            |
| Output power                     | P <sub>O1</sub>    | THD = 10%  | 5       | 9    |      | mW            |
|                                  | P <sub>O2</sub>    | THD = 10%, $f = 100\text{ Hz}$ , L.B. = on   | 13      | 21   |      | mW            |
| Total harmonic distortion        | THD <sub>2</sub>   | $P_O = 1\text{ mW}$  |         | 0.5  | 1.5  | %             |
| Inter-channel crosstalk          | CT <sub>3</sub>    | $V_O = -20\text{ dBm}$ , $R_V = 0\text{ }\Omega$   | 38      | 43   |      | dB            |
| Output noise voltage             | $V_{NO}$           | $R_V = 0\text{ }\Omega$ , BPF: 20 Hz to 20 kHz   |         | 35   | 48   | $\mu\text{V}$ |
| Ripple rejection ratio           | Rr <sub>2</sub>    | $R_V = 0\text{ }\Omega$ , $V_r = -30\text{ dBm}$ , $f_r = 100\text{ Hz}$ ,<br>100 Hz TUNE  | 50      | 74   |      | dB            |
| Muted output voltage             | $V_{M2}$           | $V_{IN} = -30\text{ dBm}$ , 1 kHz TUNE, Muting on  |         |      | -90  | dBm           |
| Input resistance                 | R <sub>i</sub>     |  | 8       | 10   | 12   | k $\Omega$    |
| Voltage gain difference          | $\Delta V_{G3}$    |  |         | 0    | 1.5  | dB            |
| [Ripple Filter]                  |                    |  |         |      |      |               |
| Ripple rejection ratio           | Rr <sub>3</sub>    | $f_r = 100\text{ Hz}$ , $V_r = -30\text{ dBm}$ , $V_{CC} = 1.0\text{ V}$ ,<br>$I_{RF} = 25\text{ mA}$ , 2SB1295, using a rank 6 $h_{FE}$ | 33      | 39   |      | dB            |
| Output voltage                   | $V_{RF}$           | $V_{CC} = 1.0\text{ V}$ , $I_{RF} = 25\text{ mA}$  | 0.89    | 0.93 |      | V             |
| [AMS]                            |                    |  |         |      |      |               |
| Operating output voltage         | $V_{OAMS}$         | With the Precut output K22 on when the<br>AMS OUT output peak voltage is 0.6 V <sub>p-p</sub> .  | 1.80    | 2.55 | 3.6  | mV            |

Note: L.B.: Low boost

LA4590W

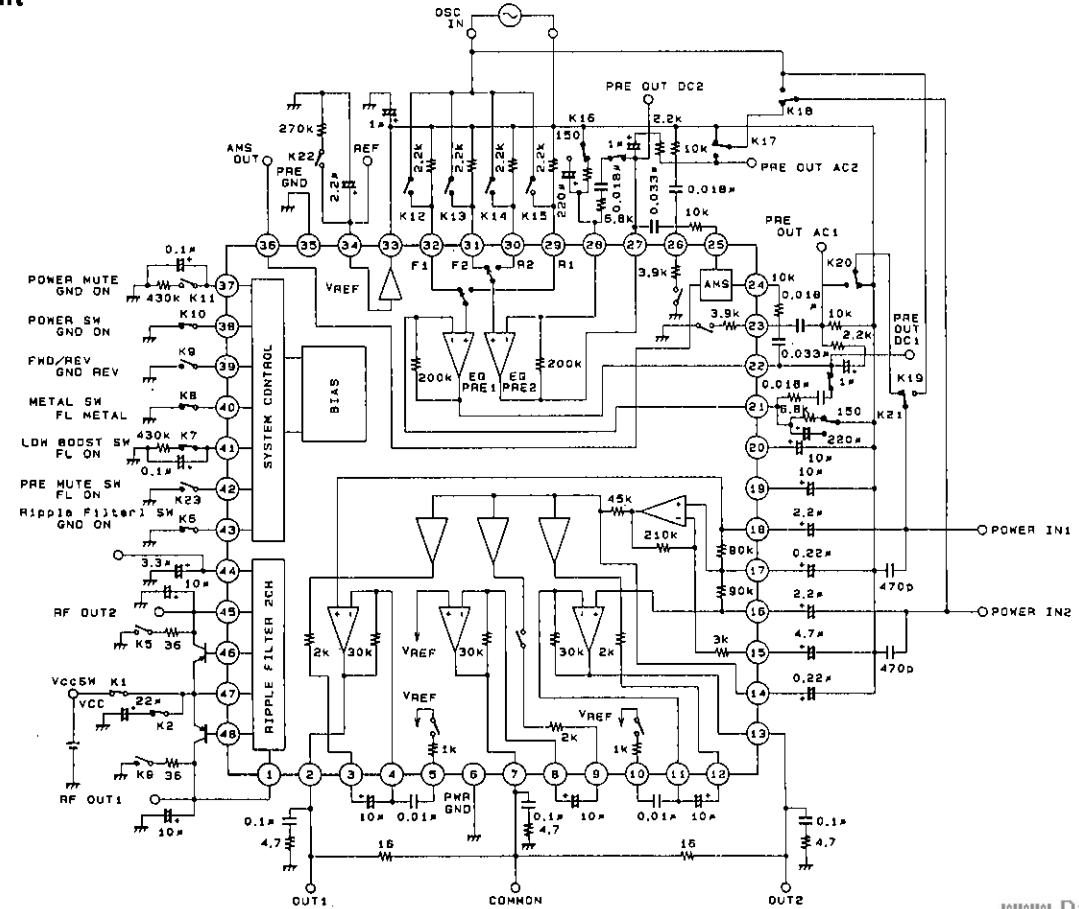
Block Diagram

Unit (Resistance: Ω, Capacitance: F)



AO1280

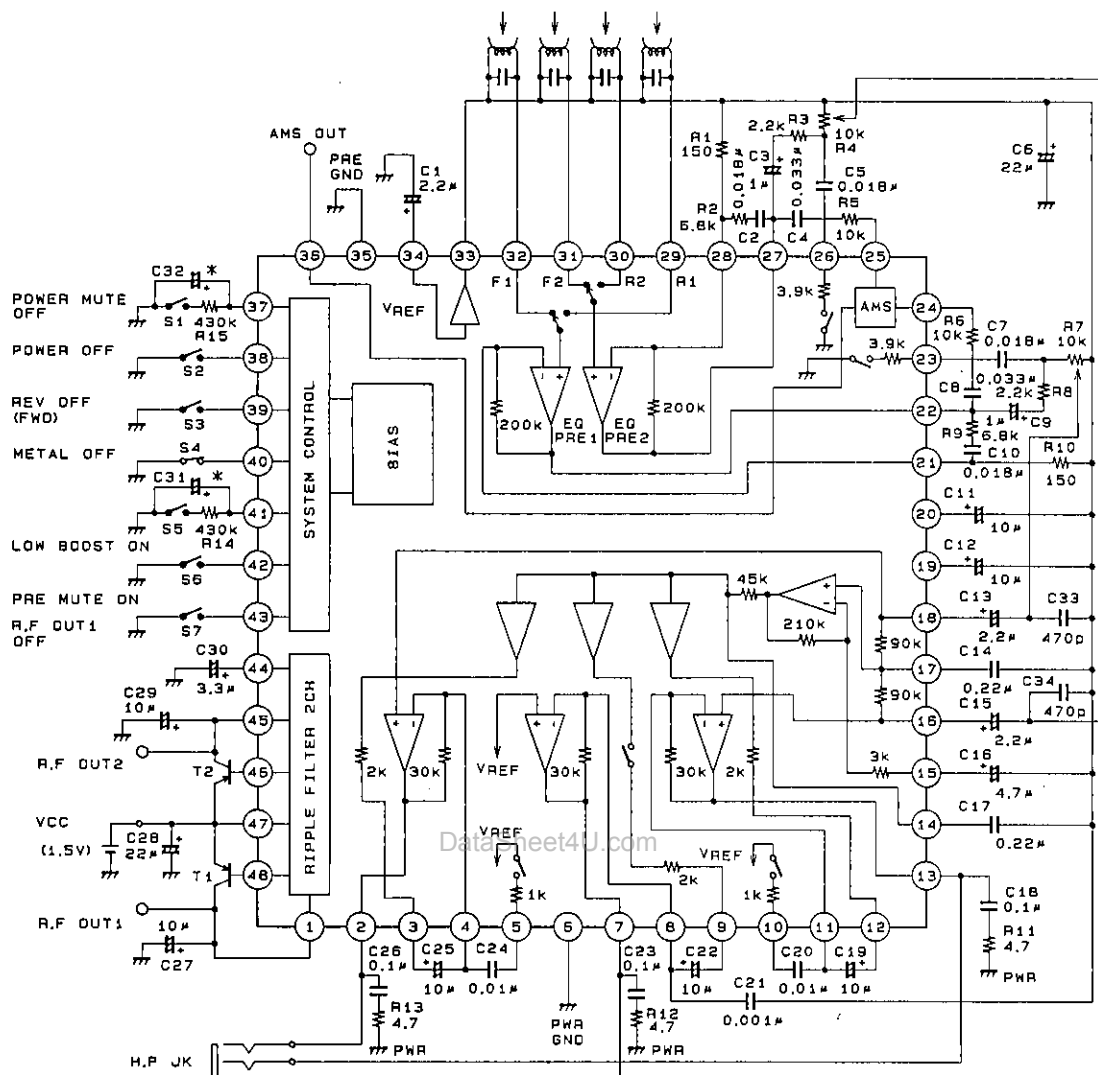
Test Circuit



AO1280

## LA4590W

## Application Circuit

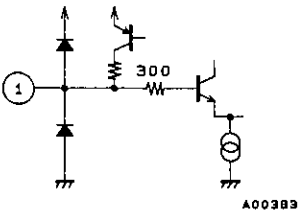
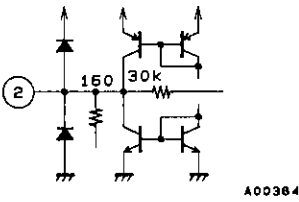
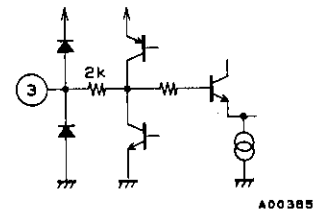
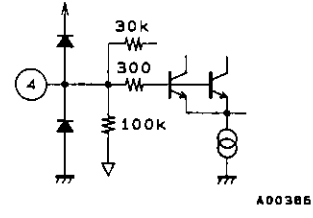
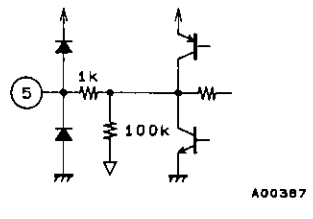
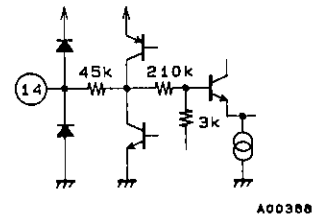
Unit (Resistance:  $\Omega$ , Capacitance: F)

A01291

Note: We recommend using a 2SB1295 of  $h_{FE}$  rank 6 or higher as the external transistor.  
Capacitors marked with an asterisk must be adjusted according to the set timing. (6800 pF to 0.22  $\mu$ F)

## LA4590W

Pin Functions and Equivalent Circuits ( $V_{CC} = 1.2\text{ V}$ )Unit (Resistance:  $\Omega$ , Capacitance: F)

| Pin No.      | Symbol  | $V_{DC}$ (V) | Equivalent circuit  | Pin function   |
|--------------|---|--------------|---|--|
| 1<br>45      | R.F OUT 1<br>R.F OUT 2                          | 1.13         |    | <ul style="list-style-type: none"> <li>R.F OUT1 can be switched on/off: on when pin 43 is at ground.</li> </ul>  |
| 2<br>7<br>13 | POWER OUT1<br>POWER OUTC<br>POWER OUT2          | 0.6          |    | <ul style="list-style-type: none"> <li>The output spans (pin 2 to pin 7, and pin 13 to pin 7) are connected by 160 <math>\Omega</math> resistors.</li> </ul>                       |
| 3<br>9<br>12 | POWER NF REF1<br>POWER NF REFC<br>POWER NF REF2 | 0.75         |   | <ul style="list-style-type: none"> <li>Used as the power NF connections.</li> </ul>  |
| 4<br>8<br>11 | POWER NF1<br>POWER NFC<br>POWER NF2             | 0.75         |  | <ul style="list-style-type: none"> <li>Power NF pins</li> </ul>  |
| 5<br>10      | POWER H.P1<br>POWER H.P2                        | 0.75         |  | <ul style="list-style-type: none"> <li>Connected to <math>V_{ref}</math> through a 1 k<math>\Omega</math> resistor when low boost is on, i.e., when pin 41 is floating.</li> </ul> |
| 14           | L.P2  | 0.75         |  | <ul style="list-style-type: none"> <li>Low boost secondary low-pass pin</li> </ul>   |

et4U.com

DataSheet4U.com

DataShee

## LA4590W

Continued from preceding page.

Unit (Resistance:  $\Omega$ , Capacitance: F)

| Pin No.  | Symbol                 | V <sub>DC</sub> (V) | Equivalent circuit | Pin function  |
|----------|------------------------|---------------------|--------------------|---|
| 15       | LOW BOOST NF           | 0.75                | <p>A00389</p>      | <ul style="list-style-type: none"> <li>Low boost amplifier NF pins</li> </ul>   |
| 16<br>18 | POWER IN2<br>POWER IN1 | 0.75                | <p>A00390</p>      | <ul style="list-style-type: none"> <li>Power input pins</li> <li>The input resistance is 10 k<math>\Omega</math>.</li> <li>Buzz suppression capacitors are built in.</li> </ul> |
| 17       | L.P1                   | 0.75                | <p>A00391</p>      | <ul style="list-style-type: none"> <li>Low boost primary low-pass pin</li> </ul>  |
| 19<br>20 | NFC2<br>NFC1           | 0.75                | <p>A00392</p>      |   |
| 21<br>28 | PRE NF1<br>PRE NF2     | 0.75                | <p>A00393</p>      | <ul style="list-style-type: none"> <li>Pre-amplifier NF pins</li> <li>No capacitors are required for these noise filters.</li> </ul>  |
| 22<br>27 | PRE OUT1<br>PRE OUT2   | 0.45                | <p>A00394</p>      | <ul style="list-style-type: none"> <li>Each output pin is connected to the corresponding NF pin by a 200 k<math>\Omega</math> resistor.</li> </ul>                              |

et4U.com

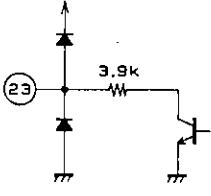
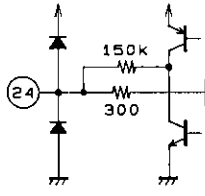
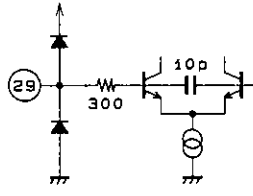
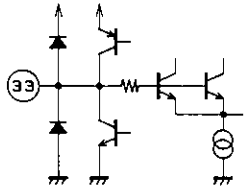
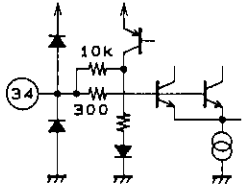
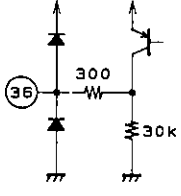
DataSheet4U.com

DataShee

## LA4590W

Continued from preceding page.

Unit (Resistance:  $\Omega$ , Capacitance: F)

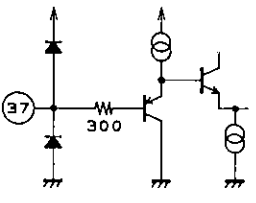
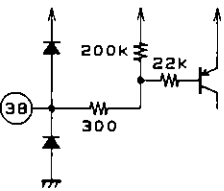
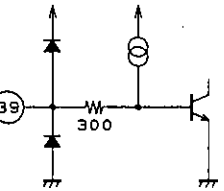
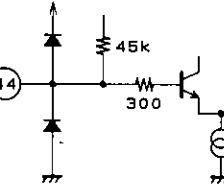
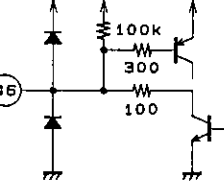
| Pin No.              | Symbol   | V <sub>DC</sub> (V) | Equivalent circuit  | Pin function   |
|----------------------|--|---------------------|---|--|
| 23<br>26             | METAL1<br>METAL2   | 0                   | <br>A00395   | <ul style="list-style-type: none"> <li>Connected to ground by a 3.9 k<math>\Omega</math> resistor when metal is selected (pin 40 is floating).</li> </ul>  |
| 24<br>25             | AMS IN1<br>AMS IN2                                       | 0.75                | <br>A00396   | <ul style="list-style-type: none"> <li>AMS inverting input pins</li> <li>External input resistors must be connected to these pins.</li> </ul>  |
| 29<br>30<br>31<br>32 | PRE REV IN1<br>PRE REV IN2<br>PRE FWD IN2<br>PRE FWD IN1 | 0.75                | <br>A00397  | <ul style="list-style-type: none"> <li>Pins 29 and 30 are on in reverse mode (when pin 39 is grounded).</li> <li>Pins 31 and 32 are on in forward mode (when pin 39 is floating).</li> <li>When a particular head is not used, 2.2 k<math>\Omega</math> bias resistors must be inserted between the corresponding pins and V<sub>ref</sub> (pin 33).</li> <li>Buzz suppression capacitors are built-in.</li> </ul> |
| 33                   | V <sub>REF</sub>   | 0.75                | <br>A00398 | <ul style="list-style-type: none"> <li>V<sub>REF</sub> amplifier output pin. A built-in output resistor (r<sub>o</sub>, about 10 <math>\Omega</math>) makes this a low-impedance output.</li> <li>The current (inflow and outflow) capacity of this pin is 200 <math>\mu</math>A, maximum.</li> </ul>  |
| 34                   | REF  | 0.75                | <br>A00399 | <ul style="list-style-type: none"> <li>V<sub>REF</sub> amplifier reference</li> </ul>  |
| 36                   | AMS OUT  |                     | <br>A00400 | <ul style="list-style-type: none"> <li>Outputs a pulse waveform that depends on the AMS IN (pins 24 and 25) input levels.</li> </ul>   |

Continued on next page.  
www.DataSheet4U.com

## LA4590W

Continued from preceding page.

Unit (Resistance:  $\Omega$ , Capacitance: F)

| Pin No.              | Symbol   | V <sub>DC</sub> (V) | Equivalent circuit   | Pin function  |
|----------------------|--|---------------------|--|---|
| 37<br>41             | POWER MUTE SW<br>LOW BOOST SW                    |                     |  <p style="text-align: right;">A00401</p>   | <ul style="list-style-type: none"> <li>• Muting is turned on by grounding pin 37.</li> <li>• Low boost is turned on by setting pin 41 floating.</li> </ul>  |
| 38                   | POWER SW   |                     |  <p style="text-align: right;">A00402</p>   | <ul style="list-style-type: none"> <li>• Turns on IC power when grounded.</li> </ul>  |
| 39<br>40<br>42<br>43 | FWD/REV SW<br>METAL SW<br>PRE MUTE SW<br>R.F1 SW |                     |  <p style="text-align: right;">A01292</p>  | <ul style="list-style-type: none"> <li>• Forward is selected when pin 39 is floating, reverse when grounded.</li> <li>• Metal is selected when pin 40 is floating.</li> <li>• Muting is turned on when pin 42 is floating.</li> <li>• R.F1 (pin 1) is turned on when pin 43 is grounded.</li> </ul> |
| 44                   | R.F REF  | 1.13                |  <p style="text-align: right;">A00404</p> | <ul style="list-style-type: none"> <li>• The R.F. reference. The R.F. SVRR can be changed with an external capacitor.</li> </ul>  |
| 46<br>48             | R.F BASE2<br>R.F BASE1                           | 0.5                 |  <p style="text-align: right;">A00405</p> | <ul style="list-style-type: none"> <li>• External PNP transistor base drive pins.</li> </ul>  |

et4U.com

DataSheet4U.com

DataShee



## LA4590W

**External Component Functions:** Recommended values are indicated in parentheses.

- $C_1$  (1.0 to 10  $\mu\text{F}$ )

$V_{\text{REF}}$  amplifier reference decoupling capacitor

This capacitor changes the  $V_{\text{REF}}$  SVRR. Note that the SVRR is degraded as this capacitance decreases.

- $C_2, C_{10}$

Playback equalization constants

- $C_3, C_9$  (0.47 to 3.3  $\mu\text{F}$ )

Preamplifier output capacitors

- $C_4, C_8$

AMS input high-pass filter capacitors

- $C_5, C_7$

Metal tape equalization constants. (The internal resistance is 3.9  $\text{k}\Omega \pm 15\%$ .)

- $C_6$  (0.1 to 22  $\mu\text{F}$ )

$V_{\text{REF}}$  decoupling capacitor

Used for excluding high-frequency noise.

- $C_{11}, C_{12}$  (3.3 to 10  $\mu\text{F}$ )

NFC decoupling capacitors

Note that the preamplifier low-frequency gain falls as these capacitances are reduced.

- $C_{13}, C_{15}$  (1.0 to 3.3  $\mu\text{F}$ )

Power amplifier input capacitors (Input resistance: 10  $\text{k}\Omega$ )

- $C_{14}, C_{17}$

Low boost low-pass filter capacitors

The low boost gain can be changed by varying these capacitances.

- $C_{16}$  (1.0 to 4.7  $\mu\text{F}$ )

Boost amplifier NF capacitor

Note that the low boost low-frequency gain falls as these capacitances are reduced.

- $C_{18}, C_{23}, C_{26}$  (0.1 to 1.0  $\mu\text{F}$ )

Oscillation suppression capacitors

- $C_{19}, C_{22}, C_{25}$  (3.3 to 10  $\mu\text{F}$ )

Power amplifier NF capacitors

Note that the power amplifier low-frequency gain falls as these capacitances are reduced.

- $C_{20}, C_{24}$

Loudness high boost capacitors

The high-frequency gain is changed by these capacitances.

- $C_{21}$  (100 to 2200 pF)

Oscillation suppression capacitor

- $C_{27}, C_{29}$  (4.7 to 10  $\mu\text{F}$ )

R.F. output decoupling capacitors (These capacitors also function as power supply capacitors and oscillation suppression capacitors.)

- $C_{28}$  (22 to 220  $\mu\text{F}$ )

Power supply capacitors

**LA4590W**

---

- C<sub>30</sub> (2.2 to 10  $\mu$ F)

R.F. reference low-pass filter capacitor

The R.F. SVRR is changed by this capacitance.

- C<sub>31</sub>, C<sub>32</sub> (6800 pF to 0.22  $\mu$ F)

Switching circuit smoothing capacitors. These capacitances must be adjusted according to the set timing.

- C<sub>33</sub>, C<sub>34</sub> (470 to 1000 pF)

Oscillation suppression capacitors used when both the preamplifier and power amplifier are used, i.e., when the volume is maximum.

- R<sub>1</sub>, R<sub>10</sub>

Preamplifier gain adjustment

- R<sub>2</sub>, R<sub>9</sub>

Playback equalization constants

- R<sub>3</sub>, R<sub>8</sub>

Metal tape equalization constants

- R<sub>4</sub>, R<sub>7</sub>

10 k $\Omega$  variable resistors

- R<sub>5</sub>, R<sub>6</sub>

AMS gain adjustment and high pass filter

- R<sub>11</sub>, R<sub>12</sub>, R<sub>13</sub>

Oscillation suppression

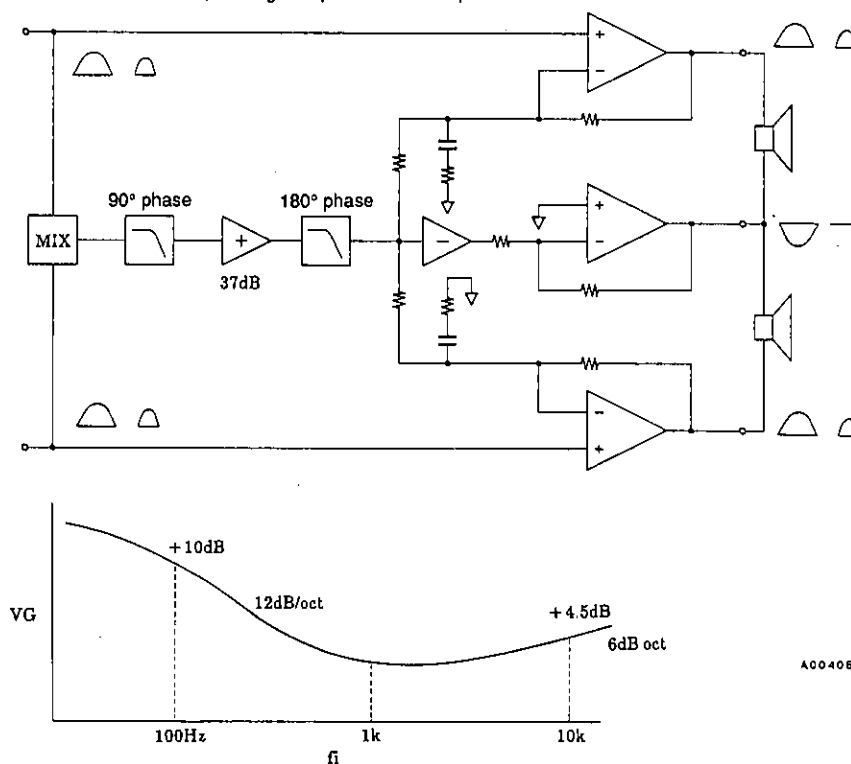
- R<sub>14</sub>, R<sub>15</sub> (100 to 430 k $\Omega$ )

Switching circuit smoothing (discharge resistors)

## Function Descriptions

### 1. Low boost system

This system amplifies low frequencies at 12 dB per octave, and high frequencies at 6 dB per octave.



### 2. Low boost

The signals applied to each input are mixed and passed through a two-stage low-pass filter. Since the signal level is reduced by the low-pass filters it is amplified between the two low-pass filter stages to correct the level. The signal that has passed through the second low-pass filter is reversed in phase with respect to the input signal and is input to each power amplifier.

### 3. Channels 1 and 2 amplifiers

The positive-phase input signals are input to the normal (+) inputs, and the reverse-phase signal that was passed through the low-pass filter is input to the inverting (-) inputs.

### 4. Common amplifier

The signal that has passed through the low-pass filter is phase inverted by an inverting amplifier and input to the common amplifier's inverting (-) input. Note that this input signal is reverse phase from the signal input to the channel 1 and channel 2 amplifier inverting (-) inputs. Since the amplifier's plus input is connected to Vref, it functions as an inverting amplifier.

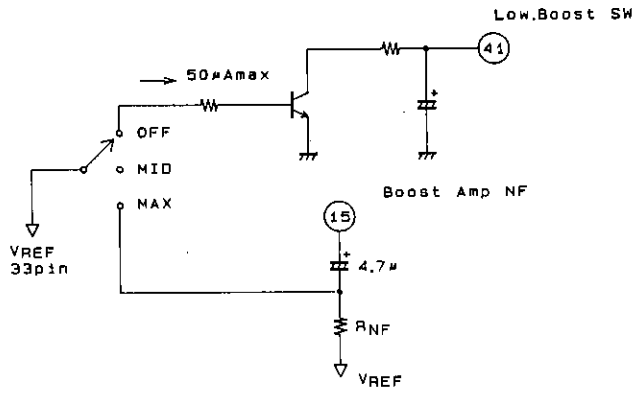
This circuit achieves a large dynamic range since the common amplifier and the channel 1 and channel 2 amplifiers operate in reverse phases.

LA4590W

Low Boost Switching Application Circuit Proposals

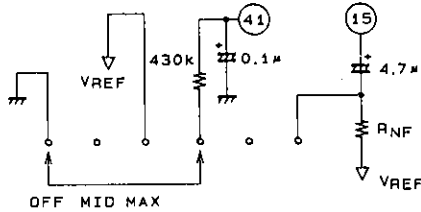
Unit (Resistance: Ω, Capacitance: F)

Proposal 1



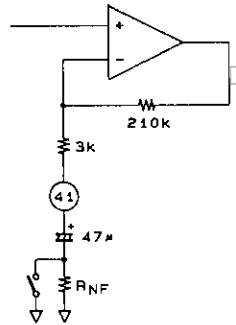
A00407

Proposal 2



A00408

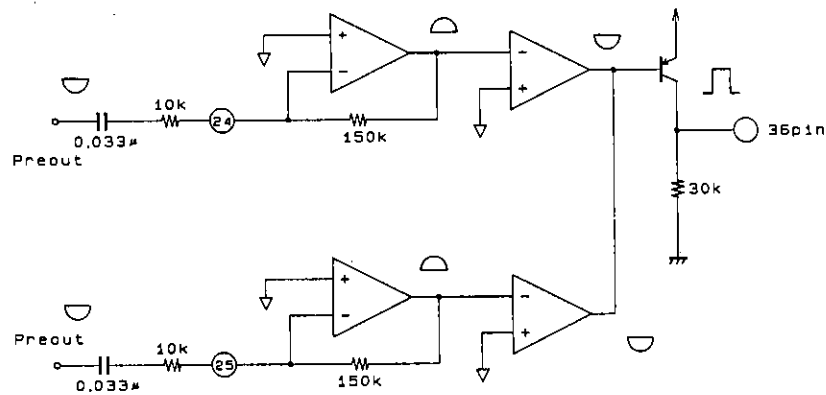
The above circuits both achieve middle and maximum settings by changing the boost amplifier gain.



A00409

AMS Comparator

Block Diagram

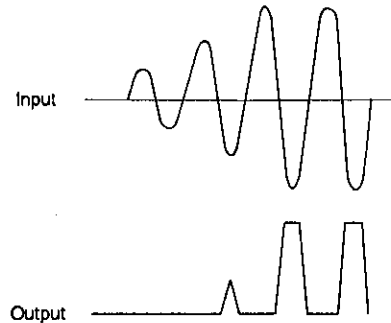


A00410

## LA4590W

## Function Descriptions

1. The input amplifier has an inverting structure. The gain and the high pass filter characteristics are adjusted by an external CR circuit that determines the input impedance.
2. The AMS comparator outputs pulses for input waveforms that fulfill certain conditions (frequency and voltage level).



3. Connect pins 24 and 25 to Vref (pin 33) if the AMS function is not used.

## Ripple Filter

1. The ripple filter SVRR is adjusted with the external capacitor connected at pin 44.

3.3  $\mu\text{F}$   $\rightarrow$  39 dB

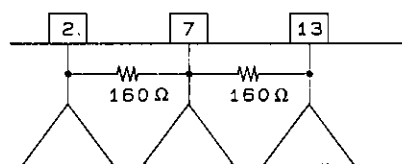
4.7  $\mu\text{F}$   $\rightarrow$  42 dB

10  $\mu\text{F}$   $\rightarrow$  47 dB

2. Leave pins 43, 48 and 1 floating if ripple filter is not used.
3. We recommend using a 2SB1295 of rank 6 or higher as the external transistor.

## Power Output

1. The power amplifier and common amplifier outputs are connected by resistances of about 160  $\Omega$ .



A00411

## Power Muting

1. The power muting function turns off the fixed current supplied to the power block.
2. The output DC voltage when the power muting function is on is the Vref potential (0.75 V).
3. The output impedance when the power muting function is on is about 10 k $\Omega$ .

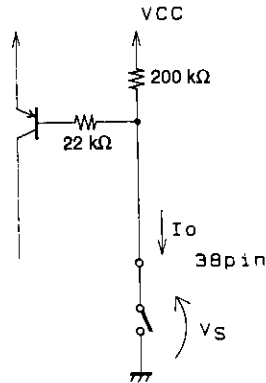
## Preampifier Muting

1. The preampifier muting function turns off the fixed current supplied to the preampifier block.
2. The output DC voltage when the preampifier muting function is on is the Vref potential (0.75 V).
3. The output impedance when the preampifier muting function is on is determined by the NAB constants.

## LA4590W

## Switch Pin Equivalent Circuits

## 1. Power switch pin



A00412

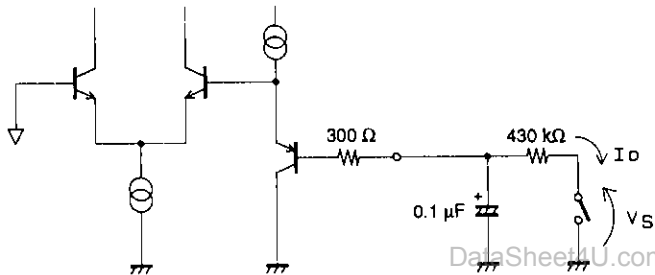
The power switch is on when the power switch pin is connected to ground.

$$I_o = V_{CC}/200\text{ k} + V_{CC} - 0.7\text{ V}/22\text{ k}\Omega$$

Pin 38

$$V_S \leq 100\text{ mV}$$

## 2. Power muting and low boost switch pins



The power muting function is turned on when pin 37 is connected to ground.

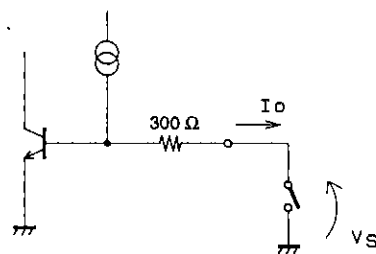
The low boost switch is turned on when pin 41 is floating.

$$I_o \leq 0.1\ \mu\text{A}$$

$$V_S \leq 80\text{ mV}$$

Note: The smoothing discharge resistor should be 430 kΩ or smaller.

## 3. FWD/REV, METAL, PRE-MUTE, R.F1 switches



Reverse is selected when pin 39 is connected to ground.

Metal tape is selected when pin 40 is floating.

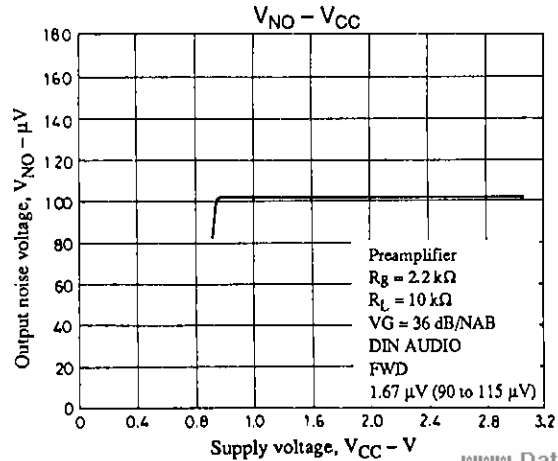
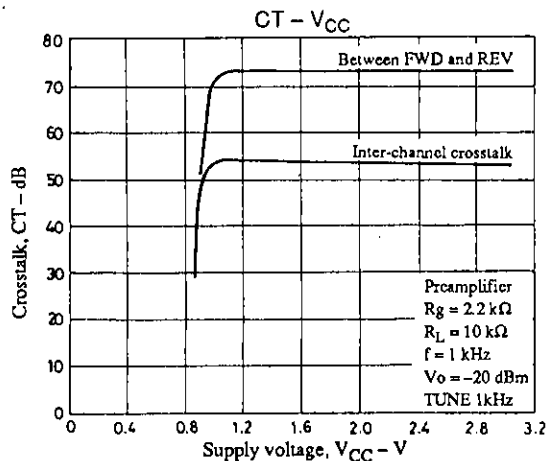
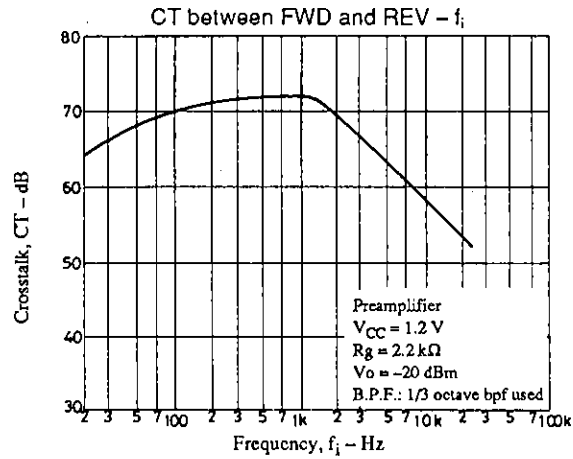
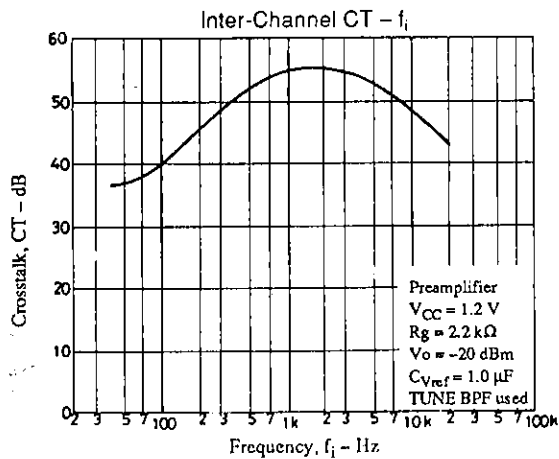
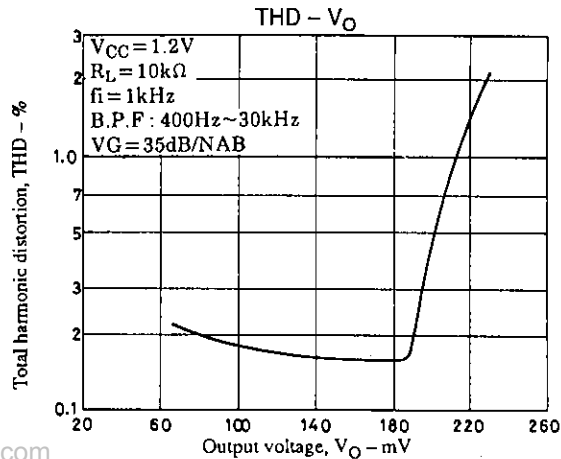
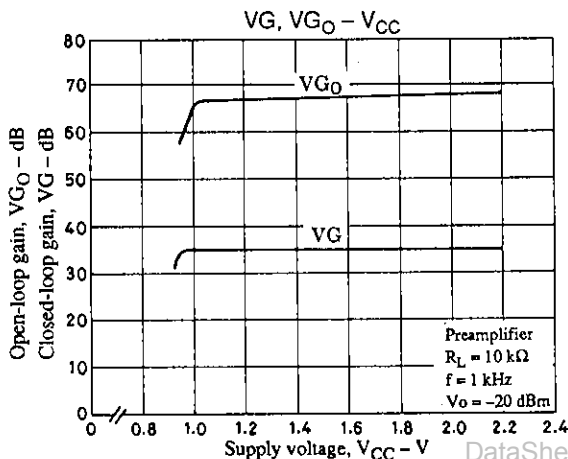
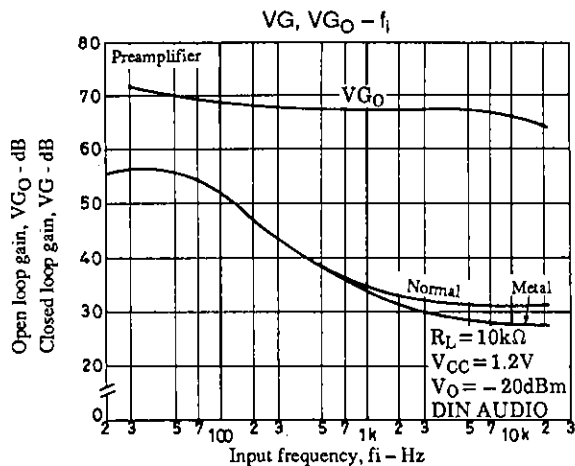
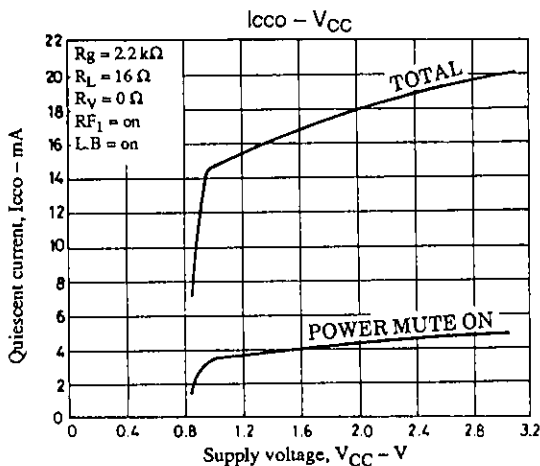
Pre-amplifier muting is turned on when pin 42 is floating.

The ripple filter switch is turned on when pin 43 is grounded.

$$\left. \begin{array}{l} \text{Pins 39, 40, and 43} \\ I_o \leq 7\ \mu\text{A} \\ V_S \leq 0.5\text{ V} \end{array} \right\} \left. \begin{array}{l} \text{Pin 42} \\ I_o \leq 14\ \mu\text{A} \\ V_S \leq 0.5\text{ V} \end{array} \right\}$$

A00414

LA4590W



et4U.com

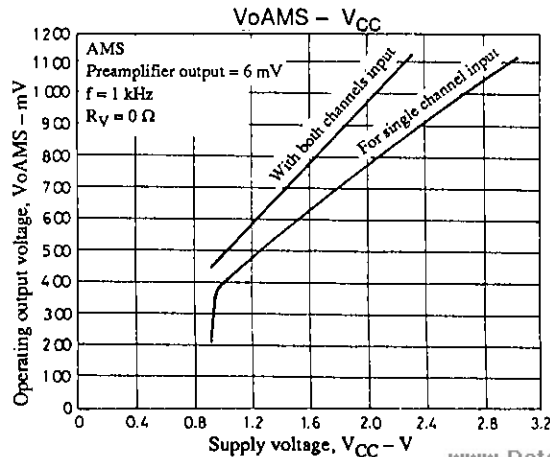
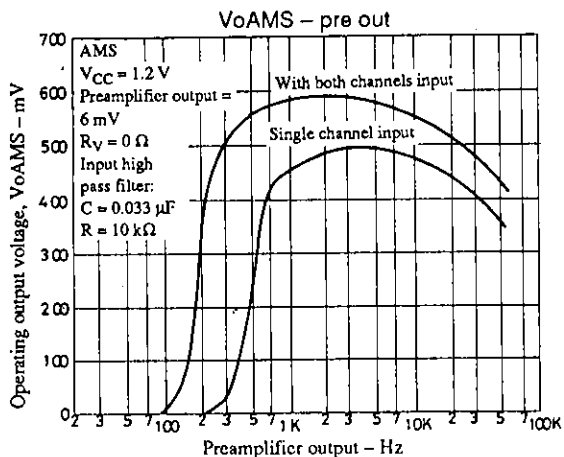
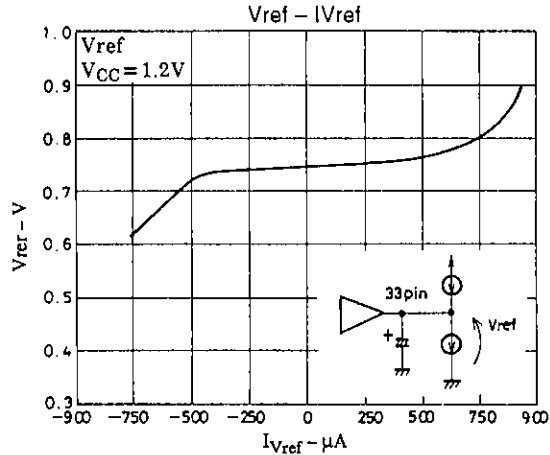
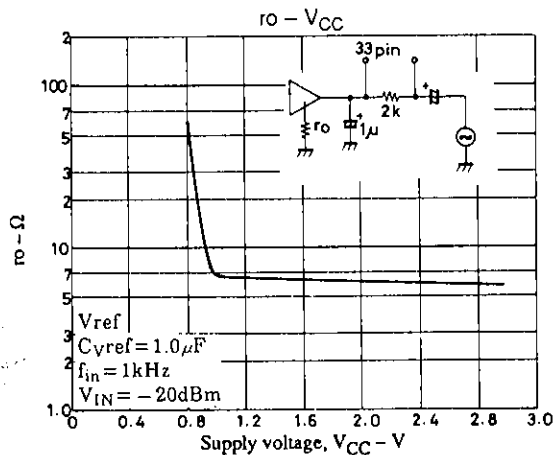
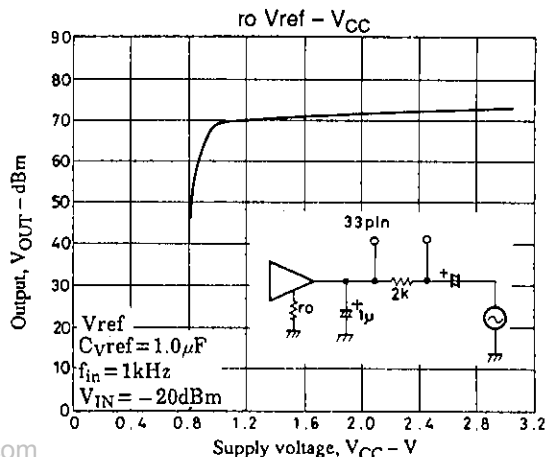
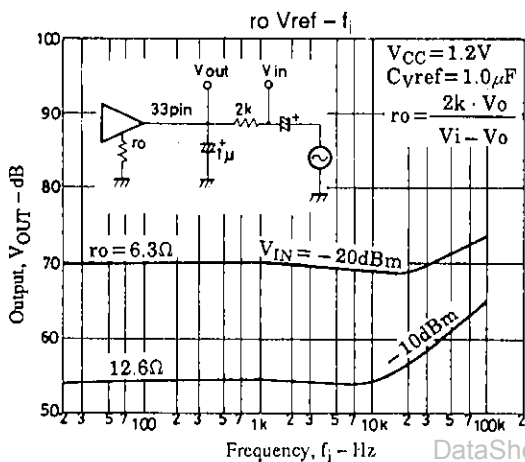
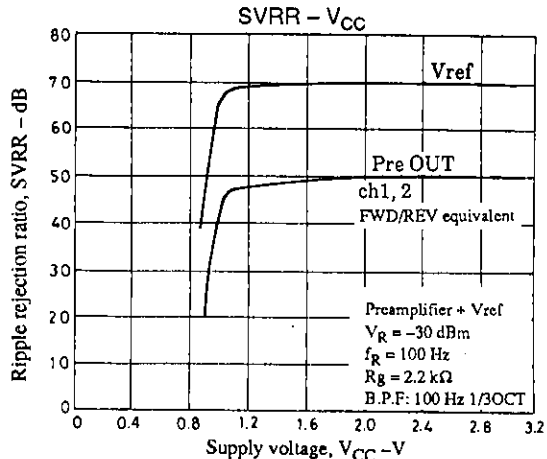
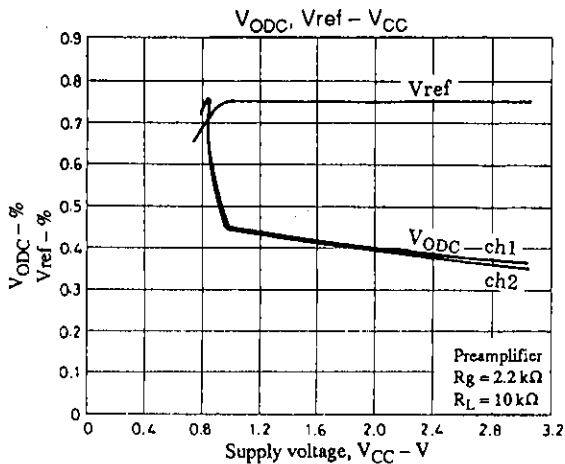
DataSheet4U.com

DataShee

DataSheet4U.com

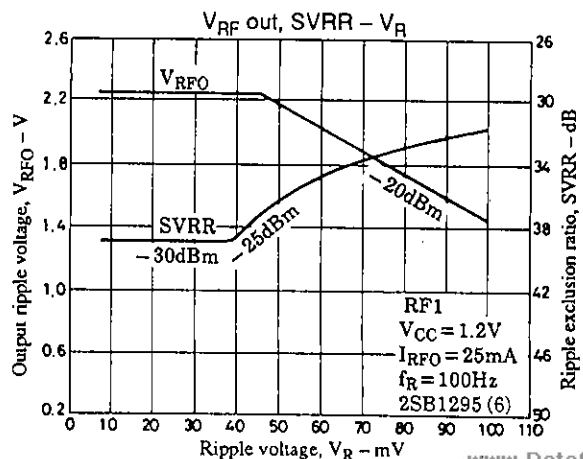
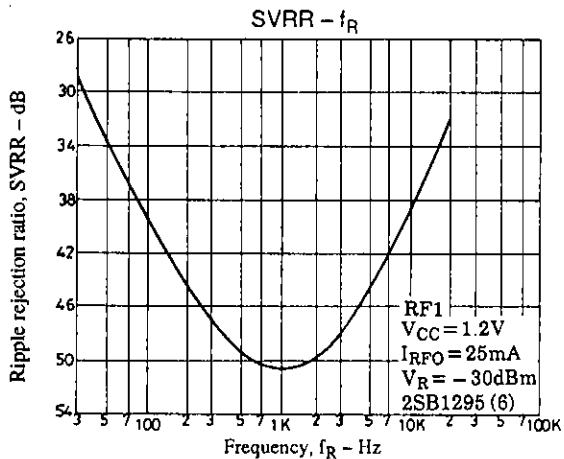
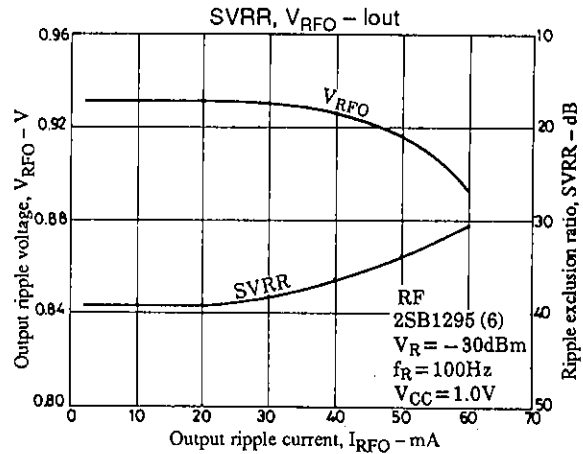
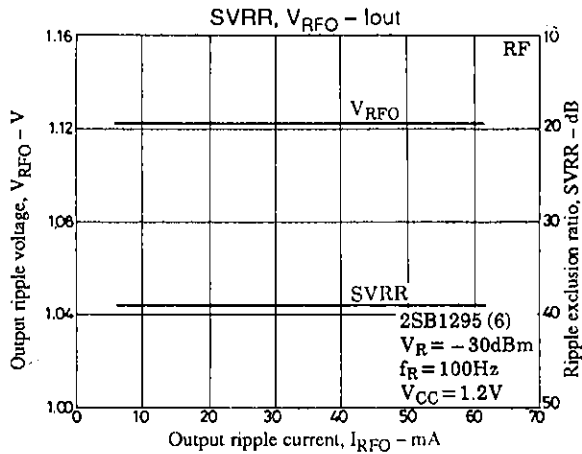
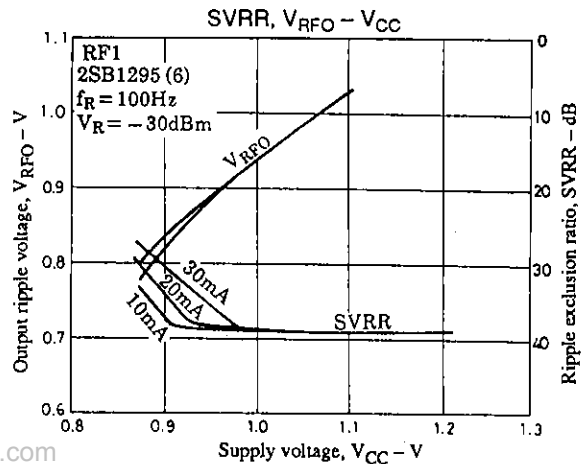
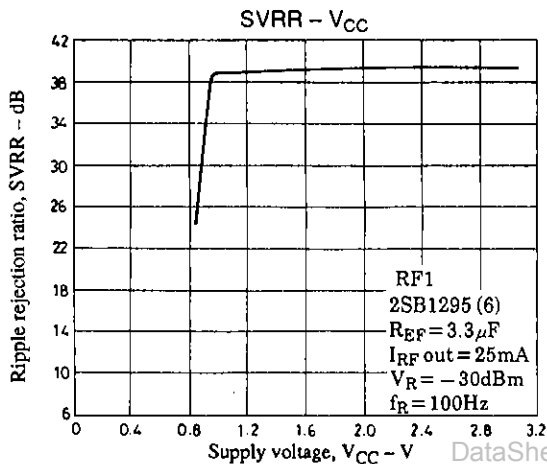
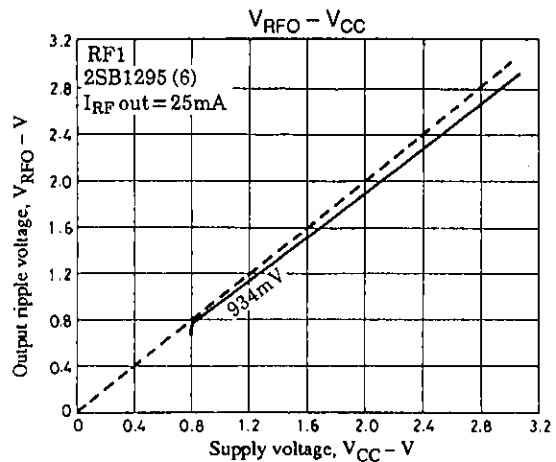
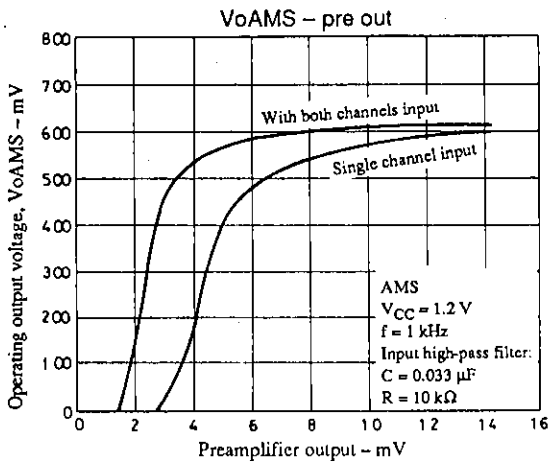
www.DataSheet4U.com

LA4590W





LA4590W



et4U.com

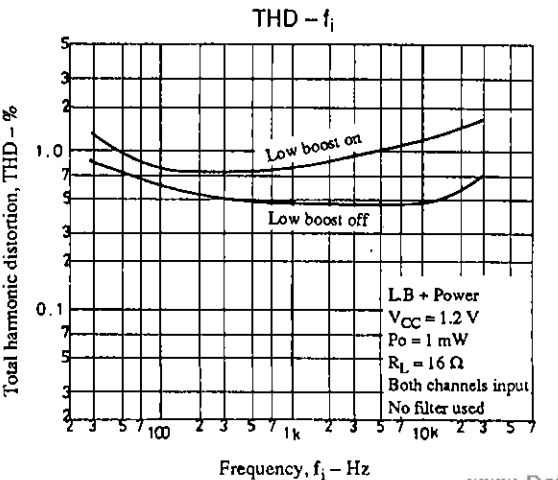
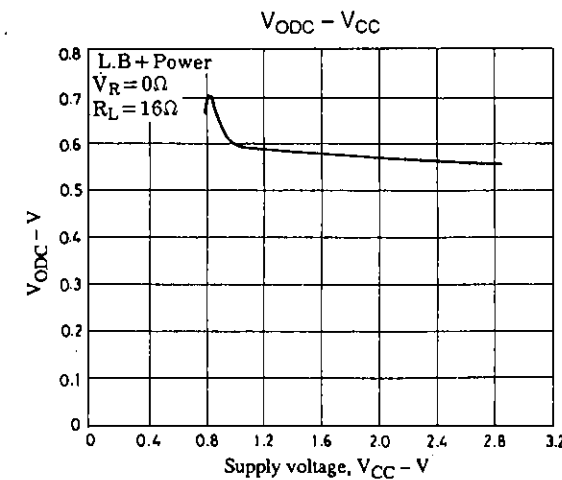
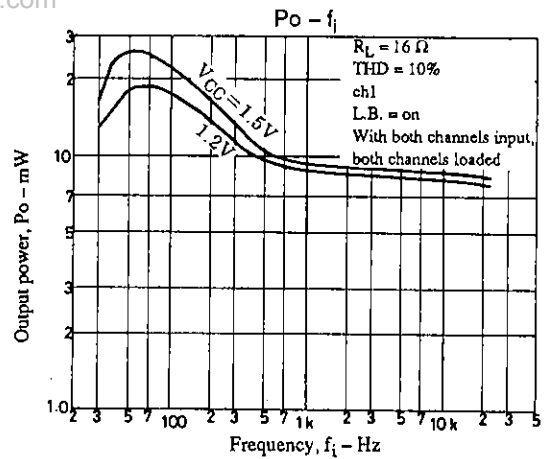
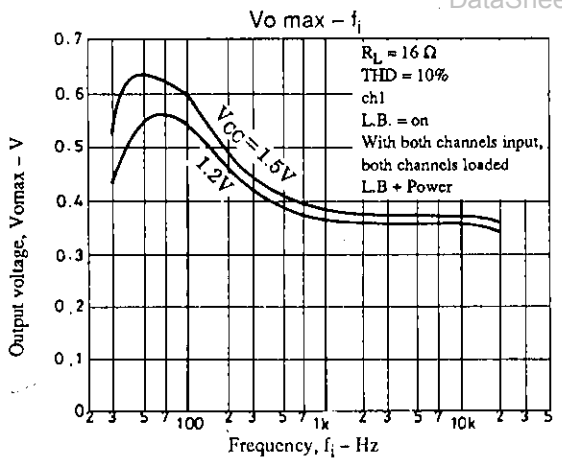
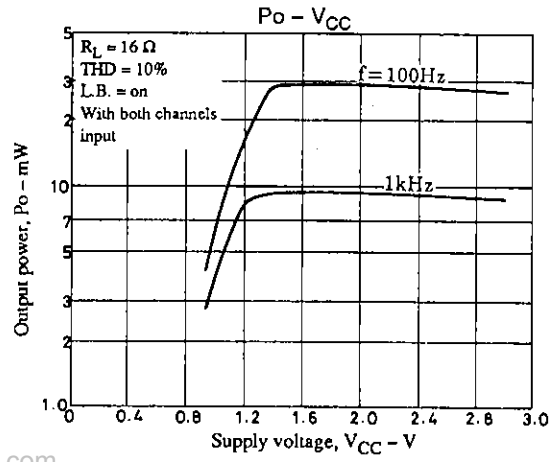
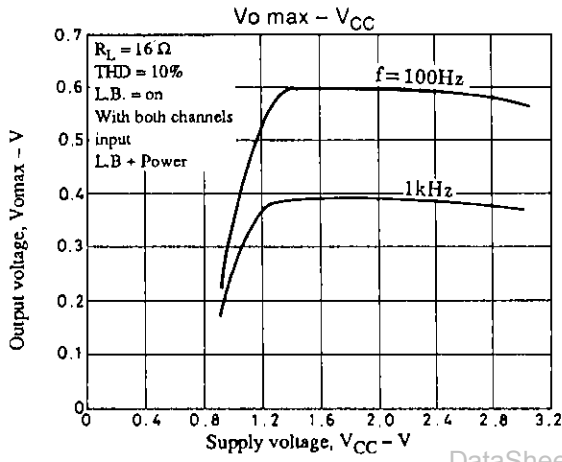
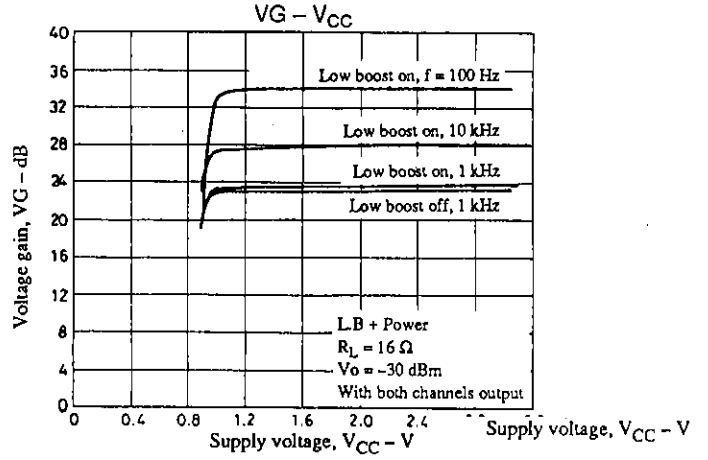
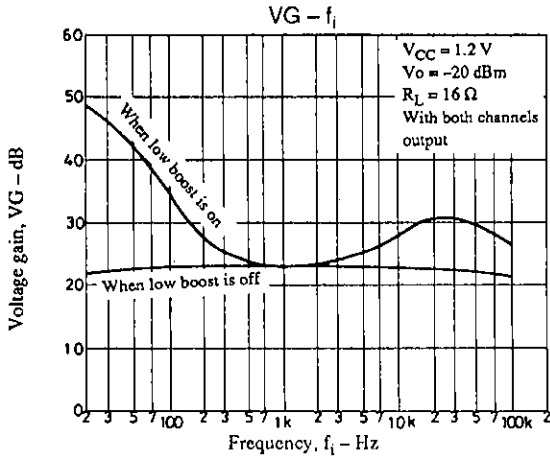
DataSheet4U.com

DataShe

DataSheet4U.com

www.DataSheet4U.com

LA4590W



et4U.com

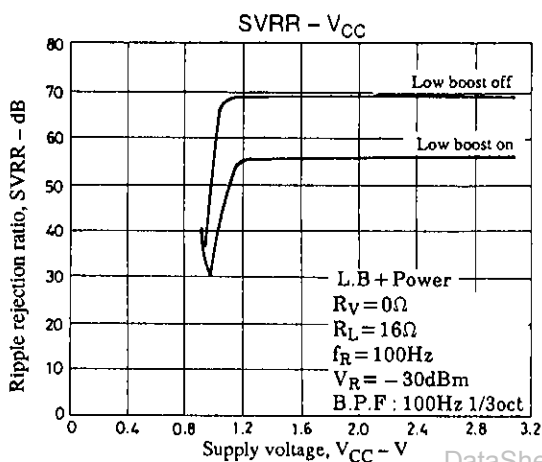
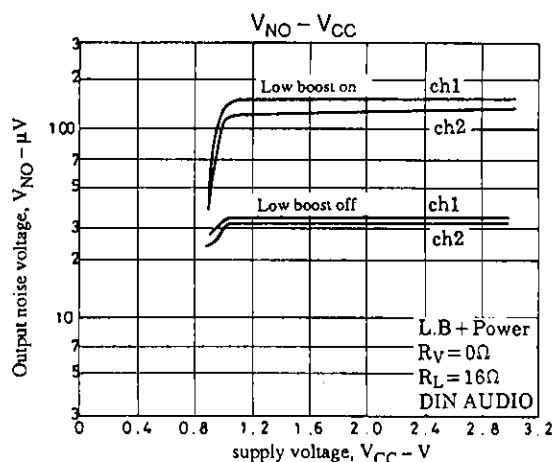
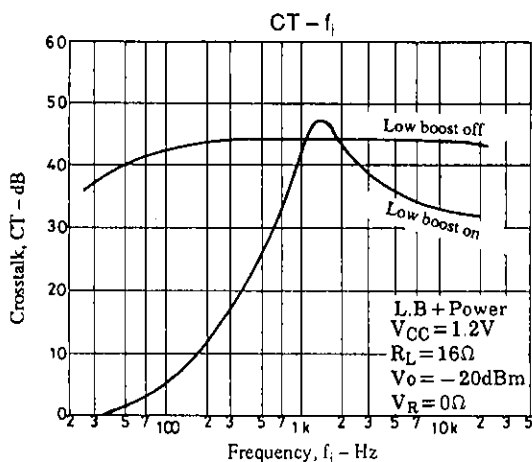
DataSheet4U.com

DataShee

DataSheet4U.com

www.DataSheet4U.com

## LA4590W



■ No products described or contained herein are intended for use in surgical implants, life-support systems, aerospace equipment, nuclear power control systems, vehicles, disaster/crime-prevention equipment and the like, the failure of which may directly or indirectly cause injury, death or property loss.

■ Anyone purchasing any products described or contained herein for an above-mentioned use shall:

- ① Accept full responsibility and indemnify and defend SANYO ELECTRIC CO., LTD., its affiliates, subsidiaries and distributors and all their officers and employees, jointly and severally, against any and all claims and litigation and all damages, cost and expenses associated with such use;
- ② Not impose any responsibility for any fault or negligence which may be cited in any such claim or litigation on SANYO ELECTRIC CO., LTD., its affiliates, subsidiaries and distributors or any of their officers and employees jointly or severally.

■ Information (including circuit diagrams and circuit parameters) herein is for example only; it is not guaranteed for volume production. SANYO believes information herein is accurate and reliable, but no guarantees are made or implied regarding its use or any infringements of intellectual property rights or other rights of third parties.