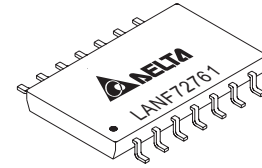




ETHERNET 10BASE-T PCMCIA TRANSFORMER MODULES

Networking Components



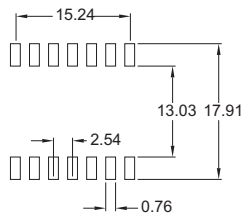
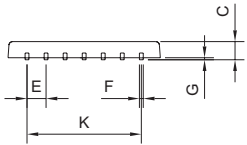
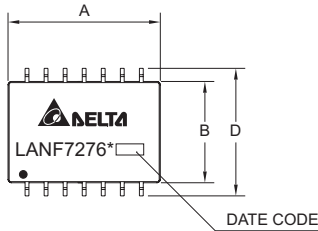
ELECTRICAL CHARACTERISTICS @25°C

Hi-Pot Test @60Sec, 1500Vrms								
Model	Insertion Loss (dB Max)	Attenuation TX (dB Min) RX		Return Loss 5-10MHz (dB Min)		Com. To Com. Mode Rejection TX (dB Min) RX		Turns Ratio TX/RX(±5%)
LANF72761	-1.0 (1-10MHz)	-7 (20MHz)	-5 (20MHz)	100 Ohm	98±13 Ohm	-30 (10-50MHz)	-30 (10-50MHz)	1:1 / 1:1
LANF72763		-18 (25MHz)	-11 (25MHz)	-18	-15	-28 (50-100MHz)	-25 (50-100MHz)	
LANF72764		-30 (30MHz)	-16 (30MHz)					
LANF72765		-33 (40MHz)	-26 (40MHz)					
LANF72766								

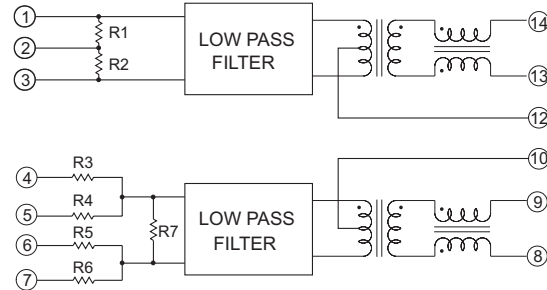
MECHANICAL CONSTRUCTION

SCHEMATICS

www.DataSheet4U.com



UNIT : mm / inch
 A = 20.30 ± 0.254 / 0.799 ± 0.010
 B = 13.50 ± 0.254 / 0.531 ± 0.010
 C = 2.45 / 0.096 MAX
 D = 17.00 ± 0.254 / 0.670 ± 0.010
 E = 2.54 / 0.100 (TYP)
 F = 0.46 ± 0.127 / 0.018 ± 0.005
 G = 0.10 / 0.004 MIN
 H = 0.254 / 0.010 (TYP)
 I = 1.13 / 0.044 REF.
 J = 0° ~ 8°
 K = 15.24 / 0.600 (TYP)



		RESISTOR VALUES						
Model	Number	R1	R2	R3	R4	R5	R6	R7
LANF72761		49.9 Ohm	49.9 Ohm	274 Ohm	68.1 Ohm	68.1 Ohm	274 Ohm	806 Ohm
LANF72763		49.9 Ohm	49.9 Ohm	68.7 Ohm	287 Ohm	287 Ohm	68.7 Ohm	N/A
LANF72764		49.9 Ohm	49.9 Ohm	316 Ohm	53.6 Ohm	316 Ohm	53.6 Ohm	1.2K Ohm
LANF72765		49.9 Ohm	49.9 Ohm	53.6 Ohm	316 Ohm	316 Ohm	53.6 Ohm	N/A
LANF72766		49.9 Ohm	49.9 Ohm	316 Ohm	53.6 Ohm	53.6 Ohm	316 Ohm	N/A

DELTA ELECTRONICS, INC.

(TAOYUAN PLANT CPBG) 252, SAN YING ROAD, KUEI SAN INDUSTRIAL ZONE, TAOYUAN SHIEN, TAIWAN, R.O.C.
 TEL: 886-3-3591968; FAX: 886-3-3591991
 Http://www.deltaww.com/products/networking