

SANYO	NO.783C	LB1272
	6-Unit, Darlington Transistor Array	

The circuit configuration of this IC is a 6-unit Darlington transistor array consisting of NPN transistors and is ideally suited for use in printer hammer driving, lamp or relay driving applications. With the built-in protective diodes against negative inputs, this IC offers advantages to the driver circuit design of electronic calculator with printer and cash register, etc. which also use display tubes.

Features

- Ideally suited for 18-digit printer because of built-in 6 units.
- With built-in protective diodes against negative inputs.
- Ideally suited for printer mechanism with load current 85 mA.

Absolute Maximum Ratings at $T_a=25^\circ\text{C}$

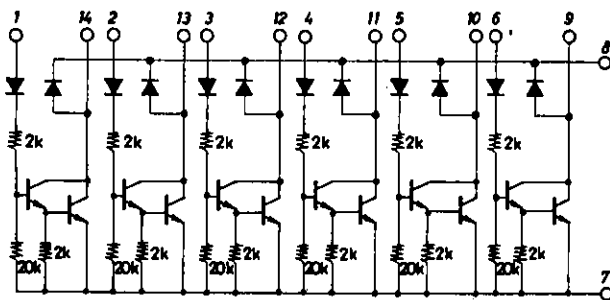
				unit
Output Supply Voltage	V _{OUT}		-0.3 to +22	V
Input Supply Voltage	V _{IN}		-40 to +12	V
Pin 8 Supply Voltage	V _{CC}		-0.3 to +20	V
Output Flow-in Current	I _{OUT}	Per unit	100	mA
Instantaneous Output Flow-in Current	I _{OP}	Per unit, duty=10% Pulse width < 20ms	150	mA
Spark Killer Diode Forward Current	I _{F(S)}	"	150	mA
GND Pin Flow-out Current	I _{GP}	"	-900 to 0	mA
Pin 8 Instantaneous Flow-out Current	I _{CCP}	"	-900 to 0	mA
Pin 8 Flow-out Current	I _{CC}		-600 to 0	mA
Allowable Power Dissipation	P _d max		770	mW
Operating Temperature	T _{opr}		-20 to +80	°C
Storage Temperature	T _{stg}		-40 to +125	°C

Allowable Operating Conditions at $T_a = 25^\circ\text{C}$

				unit
Output Supply Voltage	V _{OUT}		22	V max
Input High Level Voltage	V _{IH}	Output pin current=100mA	3 to 12	V
Input Low Level Voltage	V _{IL}	Output pin current=100μA	-35 to +1	V
Load Inductance	LL	Using protective diode	100	mH max

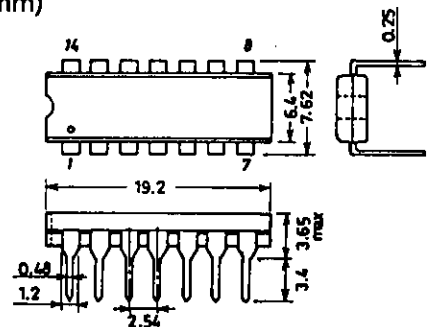
(Continued on next page)

Equivalent Circuit



Unit (resistance: Ω)

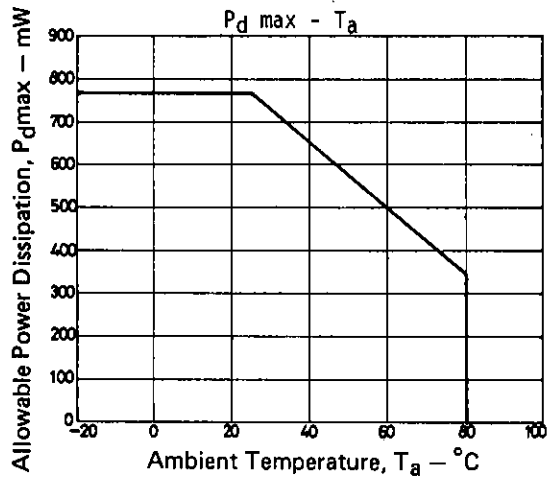
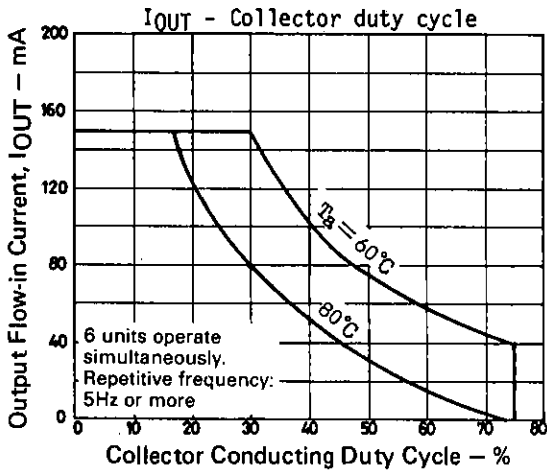
Package Dimensions 3003A-D14IC (unit : mm)



SANYO: DIP14

Operating Characteristics at $T_a=25^\circ\text{C}$

			min	typ	max	unit
Output Voltage	$V_{OUT(1)}$	$V_{IN}=3\text{V}, I_{OUT}=150\text{mA}$			1.7	V
	$V_{OUT(2)}$	$V_{IN}=3\text{V}, I_{OUT}=100\text{mA}$			1.4	V
Output Sustain Voltage	$V_{OUT(s)}$	$V_{IN}=\text{open}, I_{OUT}=150\text{mA}$ Applied time $< 10\mu\text{s}$	22			V
Output Leakage Current	I_{off}	$V_{IN}=1\text{V}, V_{out}=22\text{V}$			100	μA
Input Current	I_{IN}	$V_{IN}=3\text{V}$			1	mA
Output Current	I_{OUT}	$I_{IN}=0.3\text{mA}, V_{OUT}=1.4\text{V}$	100			mA
Input Leakage Current	I_{leak}	$V_{IN}=-35\text{V}$	-10			μA
Spark Killer Diode Leakage Current	$I_{leak(s)}$	$V_{OUT}=0\text{V}, \text{Pin}8=20\text{V}$			30	μA
Spark Killer Diode Forward Voltage	$V_F(S)$	$I_F(3)=150\text{mA}$			1.7	V



- No products described or contained herein are intended for use in surgical implants, life-support systems, aerospace equipment, nuclear power control systems, vehicles, disaster/crime-prevention equipment and the like, the failure of which may directly or indirectly cause injury, death or property loss.
- Anyone purchasing any products described or contained herein for an above-mentioned use shall:
 - ① Accept full responsibility and indemnify and defend SANYO ELECTRIC CO., LTD., its affiliates, subsidiaries and distributors and all their officers and employees, jointly and severally, against any and all claims and litigation and all damages, cost and expenses associated with such use:
 - ② Not impose any responsibility for any fault or negligence which may be cited in any such claim or litigation on SANYO ELECTRIC CO., LTD., its affiliates, subsidiaries and distributors or any of their officers and employees jointly or severally.
- Information (including circuit diagrams and circuit parameters) herein is for example only; it is not guaranteed for volume production. SANYO believes information herein is accurate and reliable, but no guarantees are made or implied regarding its use or any infringements of intellectual property rights or other rights of third parties.