

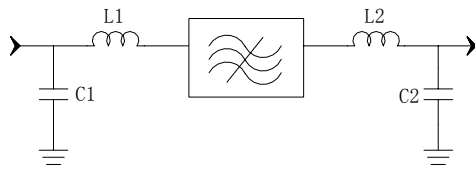
Specifications

Parameter	Unit	Minimum	Typical	Maximum
Center Frequency	MHz	139.95	140	140.05
Insertion Loss	dB	-	13.8	15
1 dB Bandwidth	MHz	1.15	1.21	-
3 dB Bandwidth	MHz	1.6	1.75	-
40 dB Bandwidth	MHz	-	3.6	3.7
Passband Variation	dB	-	0.4	1
Group delay Variation ($F_0 \pm 0.8\text{MHz}$)	nsec	-	40	-
Phase Linearity ($F_0 \pm 0.8\text{MHz}$)	degree	-	1	-
Ultimate Rejection	dB	40	42	-
Absolute Delay	usec	-	1.5	-
Material Temperature coefficient	KHz/°C	0.14		
Ambient Temperature	°C	25		
Package Size	SMP-53 (13.3 x 6.5 mm Nominal Footprint)			

Notes:


- All specifications are based on the test circuit shown
- In production, devices will be tested at room temperature to a guardbanded specification to ensure electrical compliance over temperature
- Electrical margin has been built into the design to account for the variations due to temperature drift and manufacturing tolerances
- This is the optimum impedance in order to achieve the performance show

Matching Configuration

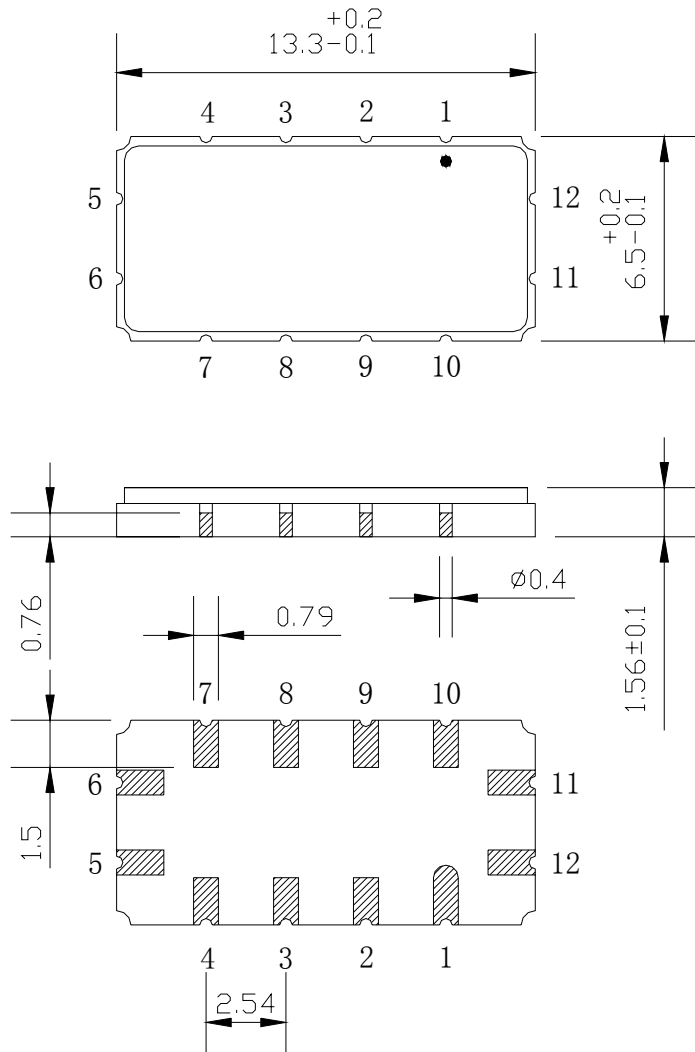


L1 = 100 + 10nH L2 = 100nH
C1 = 47pF C2 = 47pF
Source/Load Impedance = 50 ohm


Notes - Component values may change depending on board layout.

	SIPAT Co., Ltd. (CETC No. 26 Research Institute) Nanping Huayuan Road No. 14 Chongqing, China, 400060	Part Number	LB140DS25	
		Rev. Date	2005-7-15	
		Rev.	1.0	Page

Package Dimension

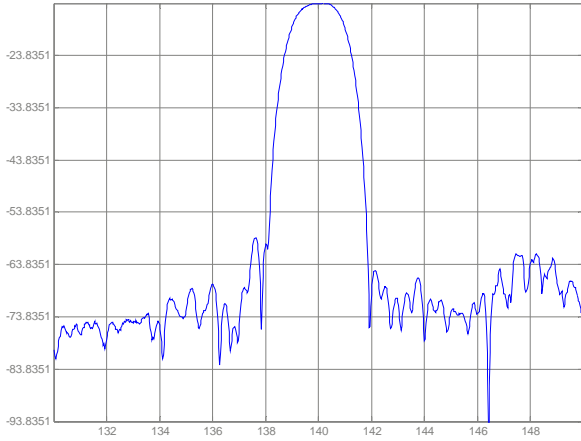


Input: 11
Output: 5

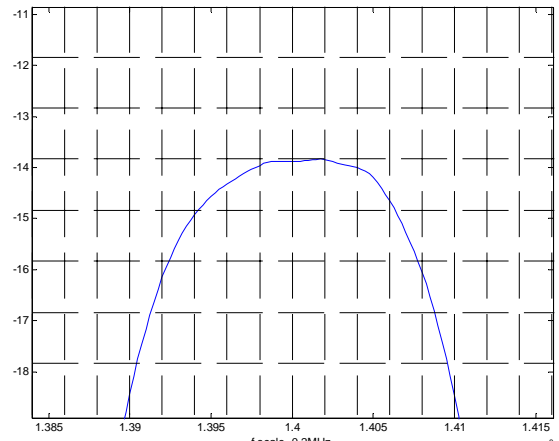
	SIPAT Co., Ltd. (CETC No. 26 Research Institute) Nanping Huayuan Road No. 14 Chongqing, China, 400060	Part Number	LB140DS25	
		Rev. Date	2005-7-15	
		Rev.	1.0	Page

Typical Performance

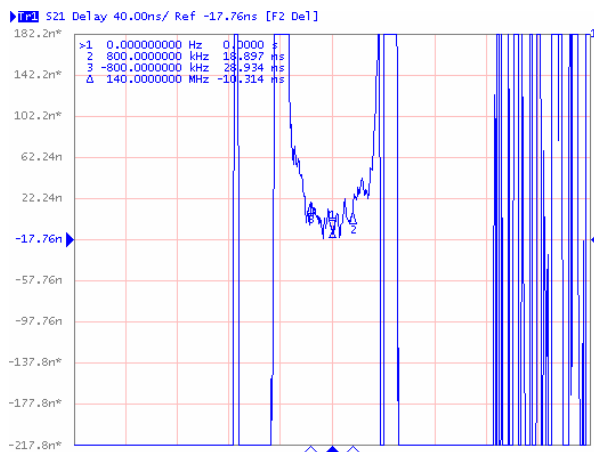
Frequency Respond



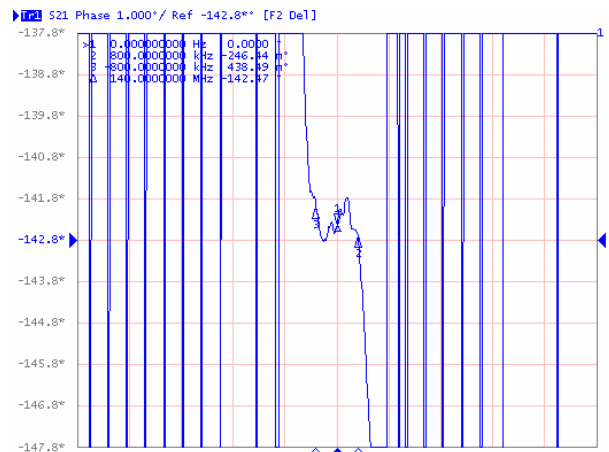
Wideband Respond



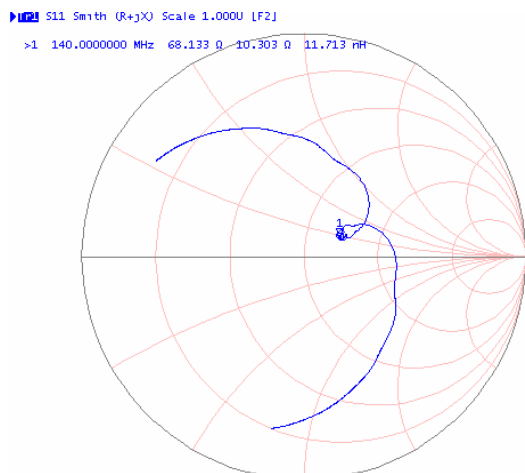
Group delay Variation ($F_0 \pm 0.8\text{MHz}$)



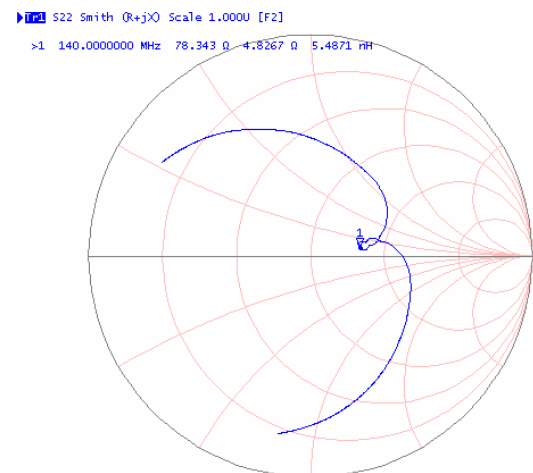
Phase Linearity ($F_0 \pm 0.8\text{MHz}$)



Smith Chart S11



Smith Chart S22



SIPAT Co., Ltd.
(CETC No. 26 Research Institute)
Nanning Huayuan Road No. 14
Chongqing, China, 400060

Part Number	LB140DS25	
Rev. Date	2005-7-15	
Rev.	1.0	Page 3/3