

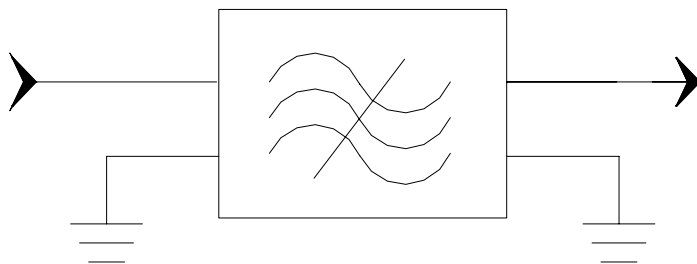
Specifications

Parameter		Unit	Minimum	Typical	Maximum
Center Frequency		MHz	69.95	70	70.05
Insertion Loss		dB		23.5	25
3dB Bandwidth		MHz	9.15	9.2	
Selectivity	$f_0 \pm 400\text{kHz}$	dB	35	55	
	$f_0 \pm 600\text{kHz}$		45	55	
	$f_0 \pm 1\text{MHz}$		50	55	
	$f_0 \pm 5\text{MHz}$		45	47	
Ultimate Rejection($f_0 \pm 15\text{MHz}$)		dB	60	62	
Passband Variation		dB		0.6	1.2
Absolute Delay		usec		3.64	4
Substrate Material			YZ-LiNbO3		
Ambient Temperature		°C	25		
Package Size			DIP3512 (35.2x12.7x5.2mm ³)		

Notes:


1. All specifications are based on the test circuit shown
2. In production, devices will be tested at room temperature to a guardbanded specification to ensure electrical compliance over temperature
3. Electrical margin has been built into the design to account for the variations due to temperature drift and manufacturing tolerances
4. This is the optimum impedance in order to achieve the performance show

Matching Configuration

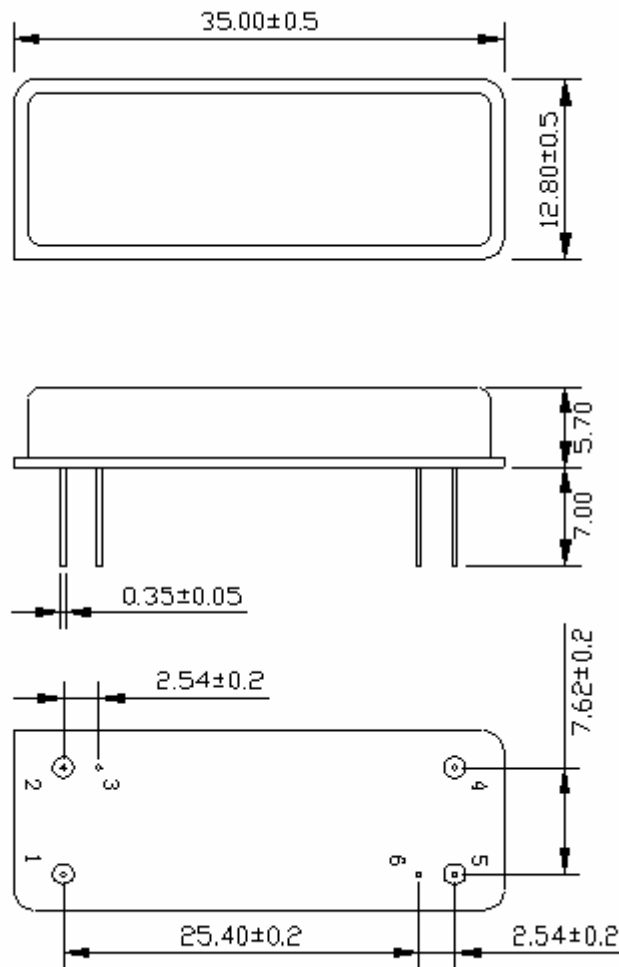



Source/Load Impedance=50 ohm

Notes - Component values may change depending
on board layout.

	SIPAT Co., Ltd. (CETC No. 26 Research Institute) Nanping Huayuan Road No. 14 Chongqing, China, 400060	Part Number	LBN07090	
		Rev. Date	2005-2-4	
		Rev.	1.0	Page

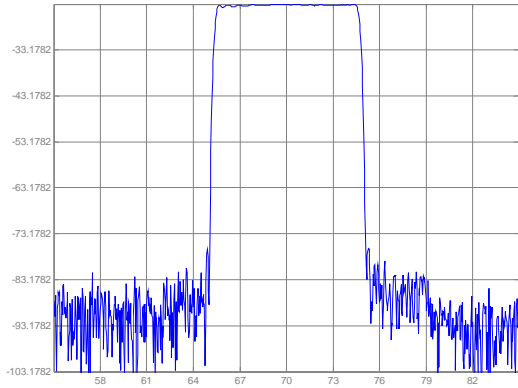
Package Dimension



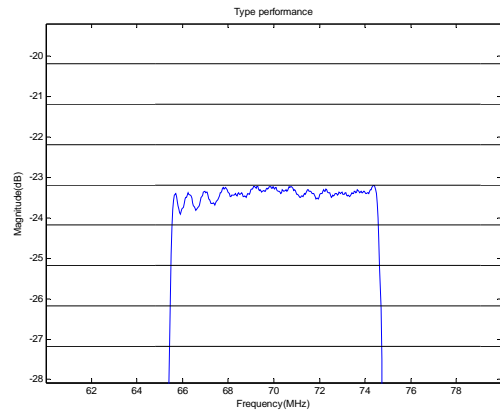
	SIPAT Co., Ltd. (CETC No. 26 Research Institute) Nanping Huayuan Road No. 14 Chongqing, China, 400060	Part Number	LBN07090	
		Rev. Date	2005-2-4	
		Rev.	1.0	Page

Typical Performance

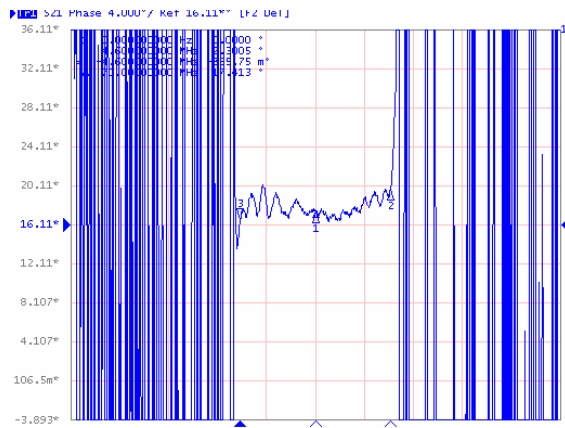
Frequency Respond



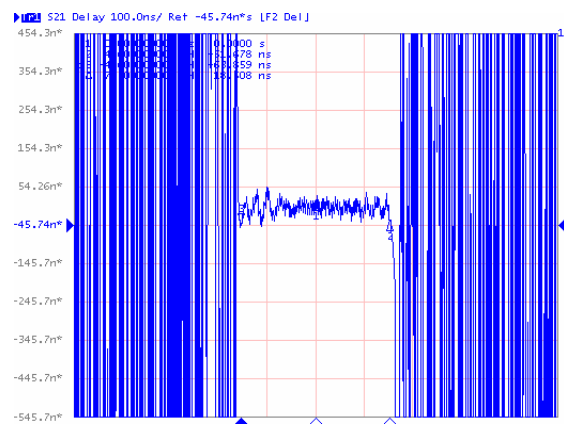
Passband Respond



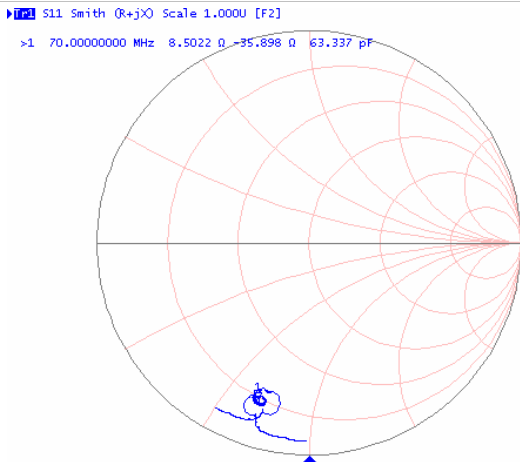
Phase Linearity ($f_0 \pm 4.6\text{MHz}$)



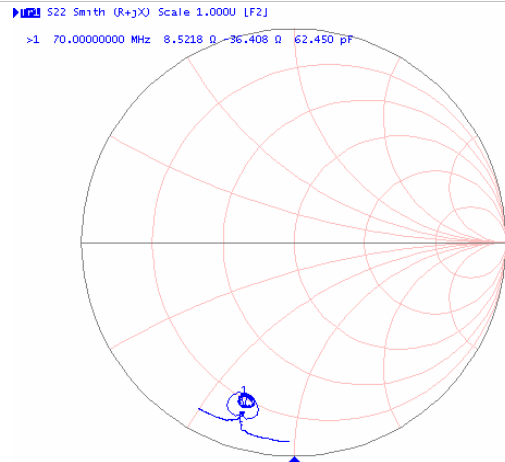
Group delay variation ($f_0 \pm 4.6\text{MHz}$)



Simth Chart S11



Simth Chart S22



SIPAT Co., Ltd.
(CETC No. 26 Research Institute)
Nanping Huayuan Road No. 14
Chongqing, China, 400060

Part Number	LBN07090	
Rev. Date	2005-2-4	
Rev.	1.0	Page 3/3