

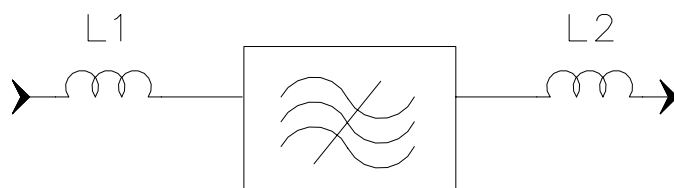
## Specifications

Parameter	Unit	Minimum	Typical	Maximum
Center Frequency	MHz	69.95	70	70.05
Insertion Loss	dB		27.5	29
1dB Bandwidth	MHz	18.7	18.86	
3 dB Bandwidth	MHz	18.9	19.08	
40 dB Bandwidth	MHz		19.85	19.9
50 dB Bandwidth	MHz		19.92	20
Passband Variation	dB		0.8	1
Absolute Delay	usec		3.67	
Ultimate Rejection( $f_0 \pm 10\text{MHz}$ )	dB	50	55	
Substrate Material			YZ	
Ambient Temperature	°C		25	
Package Size		DIP3512 (35.2x12.7x5.2mm <sup>3</sup> )		

### Notes:

- All specifications are based on the test circuit shown
- In production, devices will be tested at room temperature to a guardbanded specification to ensure electrical compliance over temperature
- Electrical margin has been built into the design to account for the variations due to temperature drift and manufacturing tolerances
- This is the optimum impedance in order to achieve the performance show

## Matching Configuration



$$L1 = 100\text{nH} \quad L2 = 120\text{nH}$$

**Source/Load Impedance = 50 ohm**

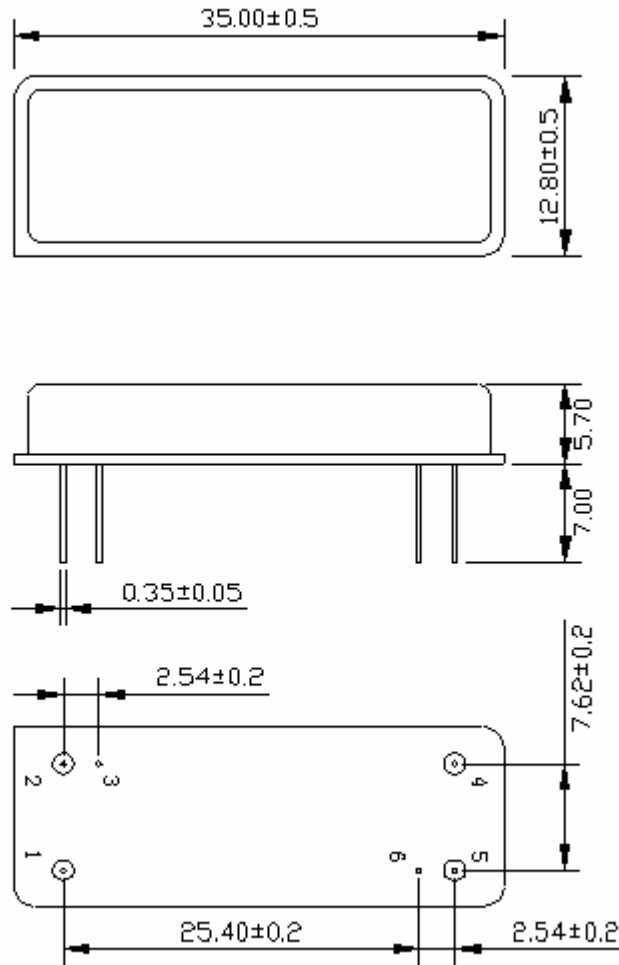
Notes - Component values may change depending  
on board layout.



**SIPAT Co., Ltd.**  
( CETC No. 26 Research Institute )  
Nanping Huayuan Road No. 14  
Chongqing, China, 400060

Part Number	LBN7055		
Rev. Date	2005-4-6		
Rev.	2.0	Page 1/3	

*Package Dimension*



**INPUT: 1**  
**Output: 5**

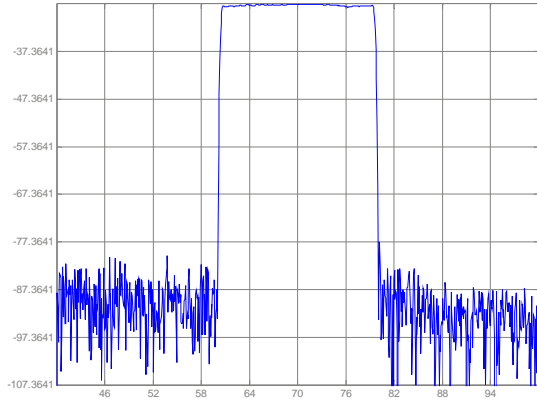


**SIPAT Co., Ltd.**  
( CETC No. 26 Research Institute )  
Nanping Huayuan Road No. 14  
Chongqing, China, 400060

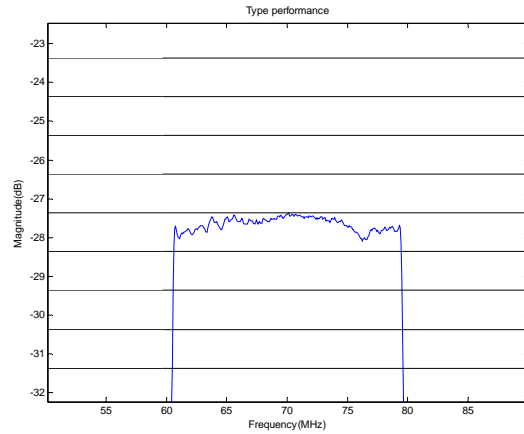
Part Number	LBN7055	
Rev. Date	2005-4-6	
Rev.	2.0	Page 2/3

*Typical Performance*

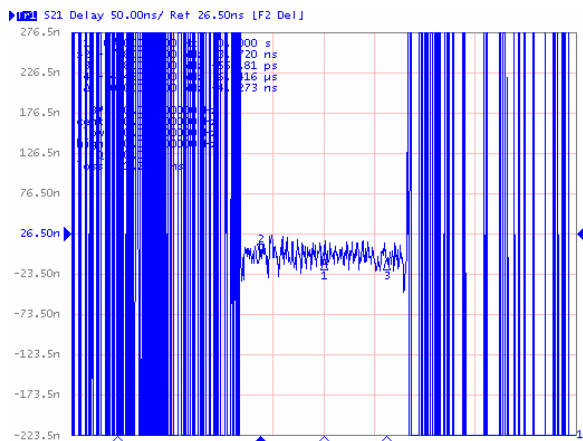
Frequency Respond



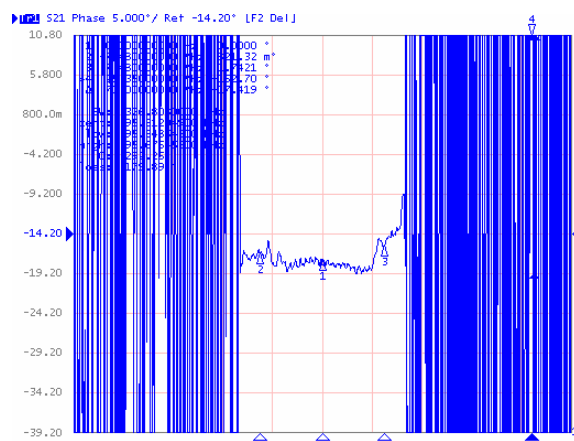
Passband Respond



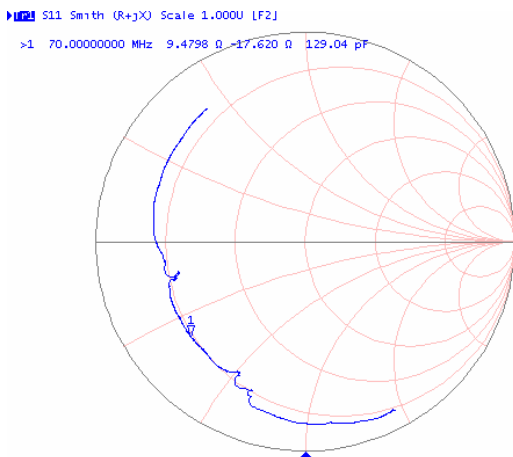
Group Delay Variation( $f_0 \pm 7.48\text{MHz}$ )



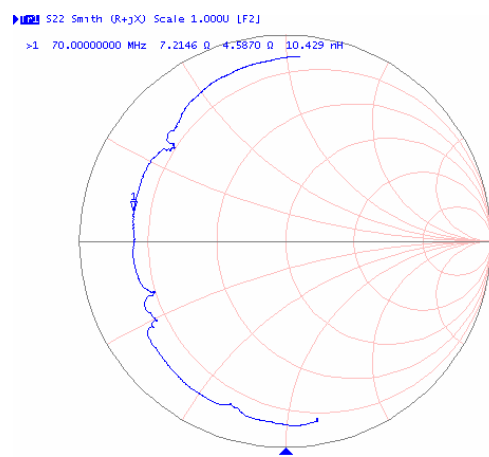
Phase Linearity( $f_0 \pm 7.48\text{MHz}$ )



Smith Chart S11



Smith Chart S22



**SIPAT Co., Ltd.**  
( CETC No. 26 Research Institute )  
Nanping Huayuan Road No. 14  
Chongqing, China, 400060

Part Number

LBN7055

Rev. Date

2005-4-6

Rev.

2.0

Page 3/3