



SIPAT Co.,Ltd

www.sipatsaw.com

China Electronics Technology Group Corporation No.26 Research Institute

LBS32202 SAW Filter Technical Specification

Absolute Maximum Ratings

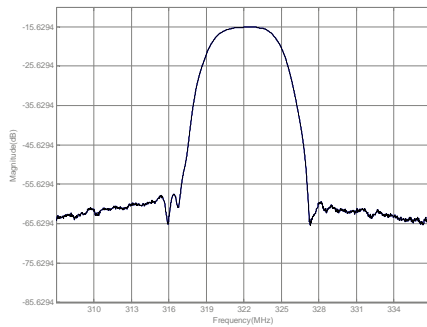
Rating	Value	Units
Maximum Incident Power in Passband	+10	dBm
Max. DC voltage between any 2 terminals	30	VDC
Operating Temperature Range	-30 to +85	°C

S P
LBS32202

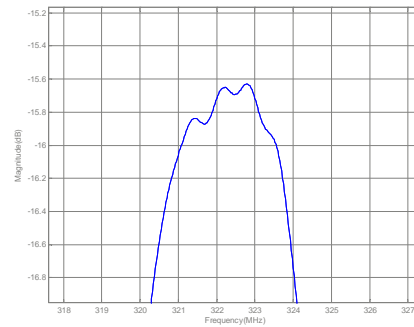
Electrical Characteristics

Characteristic	Sym	Min	Typ	Max	Units
Nominal Center Frequency	f _C	321.85	322	322.15	MHz
Passband	Insertion Loss at f _C	-	15.5	17	dB
	1 dB Bandwidth	BW3	2.8	3.47	MHz
	3 dB Bandwidth	BW20	4.7	4.88	MHz
	35 dB Bandwidth	BW45	-	9.62	MHz
	Ripple	r _p	-	0.3	dB
	Group Delay Variation over f _C ±2.4 MHz	GDV	-	16	nSP-P
Rejection	f _C ±12 MHz	UR	50	55	dB
Substrate Material	Quartz				
Impedance Matching to 50 Ω unbalanced	External L-C				
Case Style	SMP-28	7.0 x 5.0 mm Nominal Footprint			

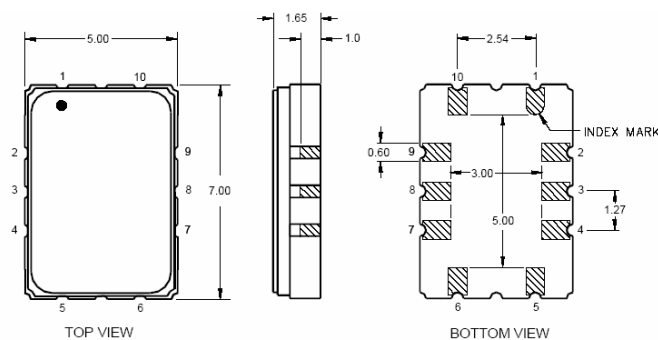
Frequency Response



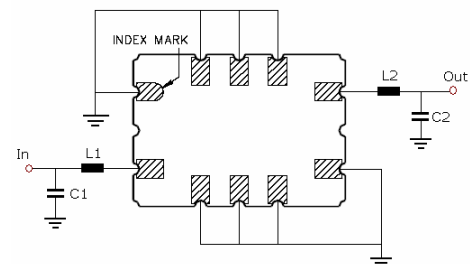
Passband Response



Package Outline



Matching Configuration



$$L1 = 18\text{nH} \quad L2 = 15\text{nH}$$

$$C1 = C2 = 22\text{pF}$$

Notes - Component values may change depending on board layout.