

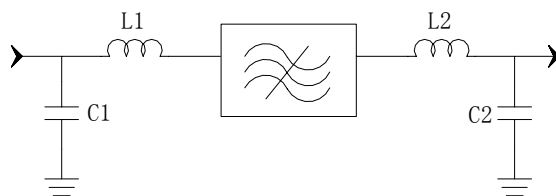
Specifications

| Parameter | Unit | Minimum | Typical | Maximum |
|--|-------------------------|---|---------|---------|
| Center Frequency | MHz | 129.9 | 130 | 130.1 |
| Insertion Loss | dB | - | 28 | 30 |
| 3 dB Bandwidth | MHz | 4.35 | 4.4 | 4.45 |
| Selectivity | $f_0 \pm 2.6\text{MHz}$ | dB | 25 | - |
| | $f_0 \pm 2.8\text{MHz}$ | dB | 40 | - |
| | $f_0 \pm 3.2\text{MHz}$ | dB | 50 | - |
| | $f_0 \pm 7.2\text{MHz}$ | dB | 55 | - |
| Passband Variation | dB | - | 0.9 | 1.2 |
| Ultimate Rejection $f_0 \pm 5\text{MHz}$ | dB | 50 | 60 | - |
| Absolute delay | usec | - | 3.86 | - |
| Substrate Material | | | 112LT | |
| Ambient Temperature | °C | | 50 | |
| Package Size | | DIP3512 (35.2x12.7x5.2mm ³) | | |

Notes:

1. All specifications are based on the test circuit shown
2. In production, devices will be tested at room temperature to a guardbanded specification to ensure electrical compliance over temperature
3. Electrical margin has been built into the design to account for the variations due to temperature drift and manufacturing tolerances
4. This is the optimum impedance in order to achieve the performance shown

Matching Configuration




C1=82pF C2=82pF

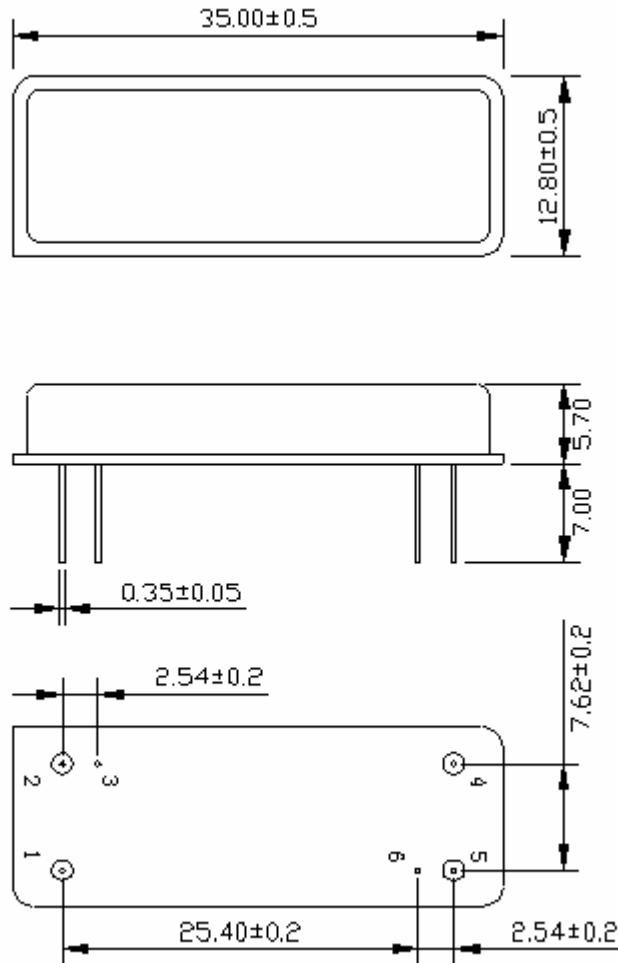
L1=15nH L2=12nH

Source/Load Impedance=50 ohm


Notes - Component values may change depending
on board layout.

| | | | | |
|--|---|-------------|------------|------|
|  | SIPAT Co., Ltd. (CETC No. 26 Research Institute) Nanping Huayuan Road No. 14 Chongqing, China, 400060 | Part Number | LBT13005 | |
| | | Rev. Date | 2004-12-18 | |
| | | Rev. | 1.0 | Page |

Package Dimension

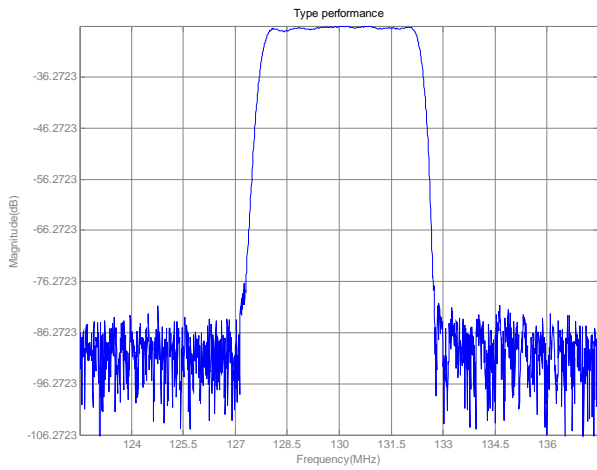


INPUT: 1
OUTPUT: 5

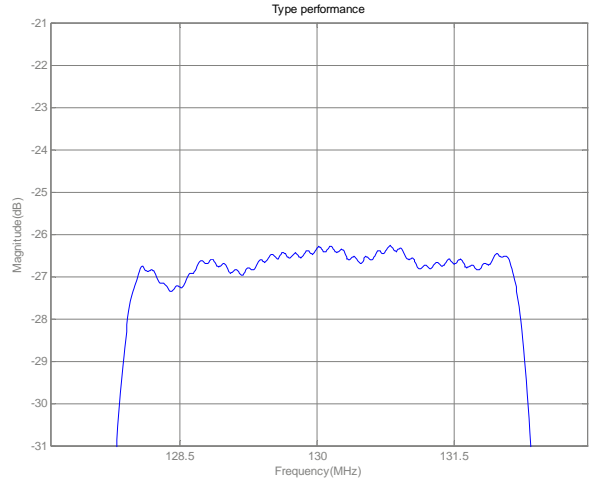
| | | | | |
|--|---|-------------|------------|------|
|  | SIPAT Co., Ltd. (CETC No. 26 Research Institute) Nanping Huayuan Road No. 14 Chongqing, China, 400060 | Part Number | LBT13005 | |
| | | Rev. Date | 2004-12-18 | |
| | | Rev. | 1.0 | Page |

Typical Performance

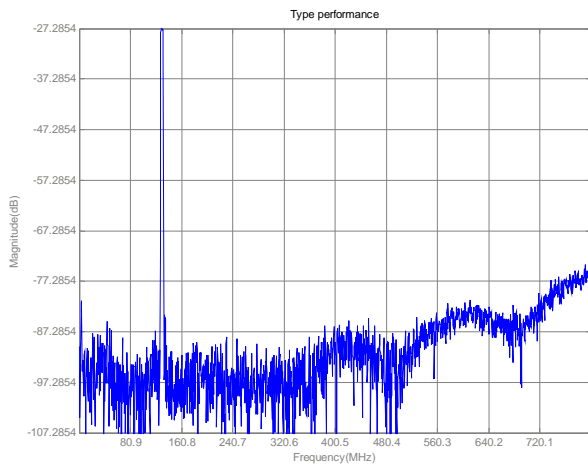
Frequency Respond



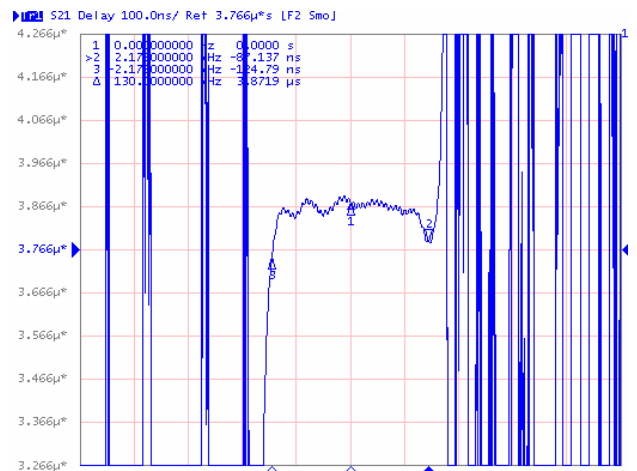
Passband Respond



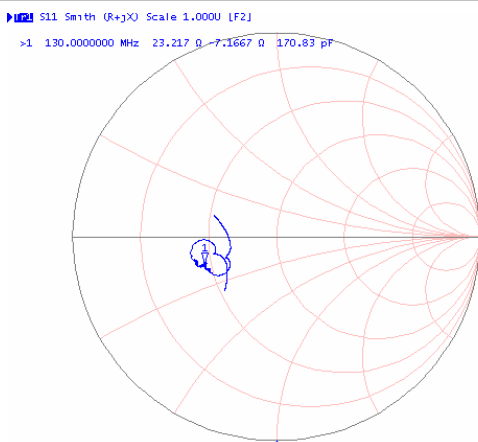
Wideband Respond



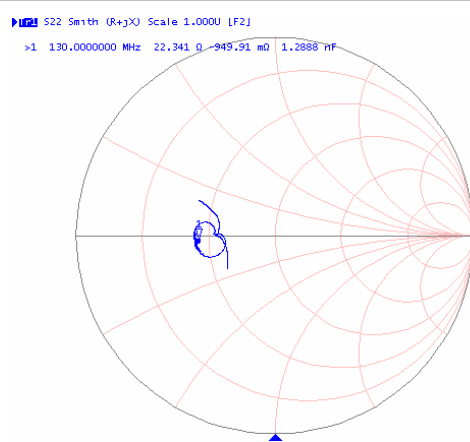
Group delay Variation($f_0 \pm 2.17$ MHz)



Smith Chart S11



Smith Chart S22



SIPAT Co., Ltd.
(CETC No. 26 Research Institute)
Nanning Huayuan Road No. 14
Chongqing, China, 400060

| | | |
|-------------|------------|----------|
| Part Number | LBT13005 | |
| Rev. Date | 2004-12-18 | |
| Rev. | 1.0 | Page 3/3 |