

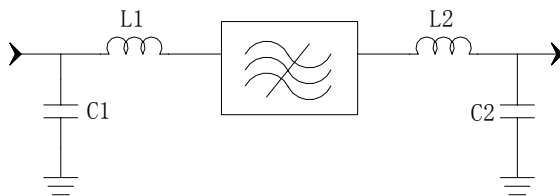
## Specifications

Parameter	Unit	Minimum	Typical	Maximum
Center Frequency	MHz	139.875	140	140.125
Insertion Loss	dB	-	27.2	-
1 dB Bandwidth	MHz	9.1	9.17	-
3 dB Bandwidth	MHz	9.3	9.41	-
40 dB Bandwidth	MHz	-	10.22	10.3
50 dB Bandwidth	MHz	-	10.28	11.5
Passband Variation	dB	-	0.7	1
Absolute Delay	usec	-	3.63	3.75
Phase Linearity( $f_0 \pm 4.5\text{MHz}$ )	deg	-	7	-
Group Delay Variation( $f_0 \pm 4.5\text{MHz}$ )	nsec	-	100	-
Ultimate Rejection	dB	50	57	-
Material Temperature coefficient	KHz/°C	-2.52		
Ambient Temperature	°C	25		
Package Size	DIP2712 (27.2x12.7x5.2mm3)			

### Notes:

- All specifications are based on the test circuit shown
- In production, devices will be tested at room temperature to a guardbanded specification to ensure electrical compliance over temperature
- Electrical margin has been built into the design to account for the variations due to temperature drift and manufacturing tolerances
- This is the optimum impedance in order to achieve the performance show

## Matching Configuration




**L1=27nH L2=33nH**

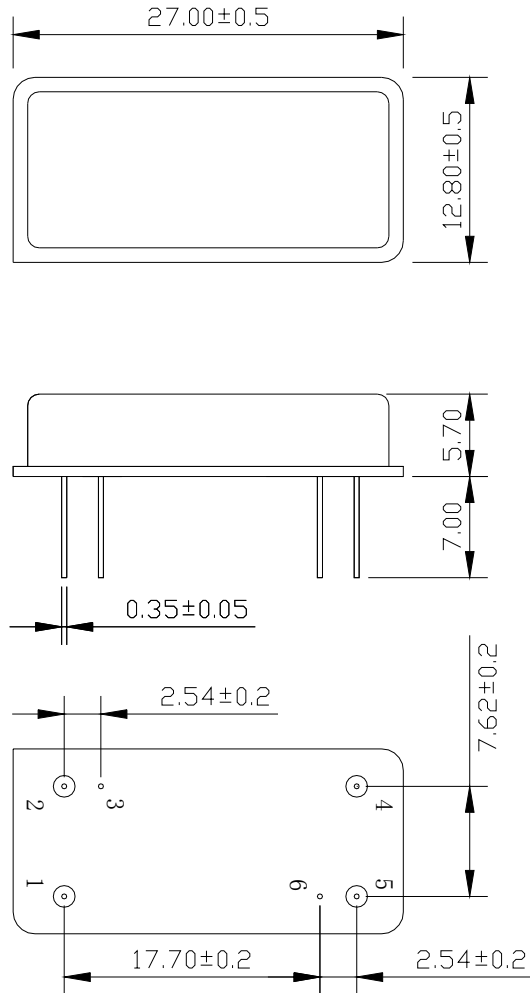
**C1=C2=56pF**

**Source/Load Impedance=50 ohm**


Notes - Component values may change depending  
on board layout.

	<b>SIPAT Co., Ltd.</b> ( CETC No. 26 Research Institute ) Nanping Huayuan Road No. 14 Chongqing, China, 400060	Part Number	LBT14050	
		Rev. Date	2006-4-5	
		Rev.	1.0	Page

*Package Dimension*

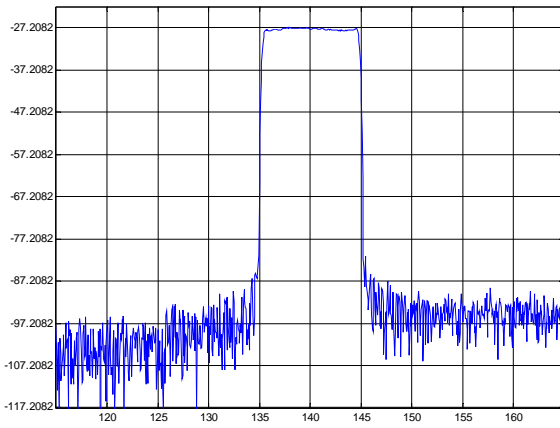


**Input:1**  
**Output:5**

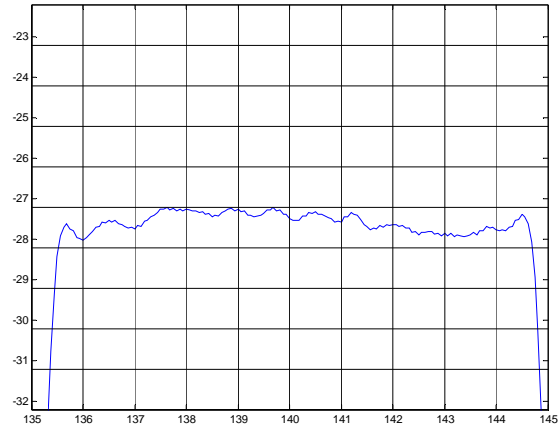
	<b>SIPAT Co., Ltd.</b> ( CETC No. 26 Research Institute ) Nanping Huayuan Road No. 14 Chongqing, China, 400060	Part Number	LBT14050	
		Rev. Date	2006-4-5	
		Rev.	1.0	Page

Typical Performance

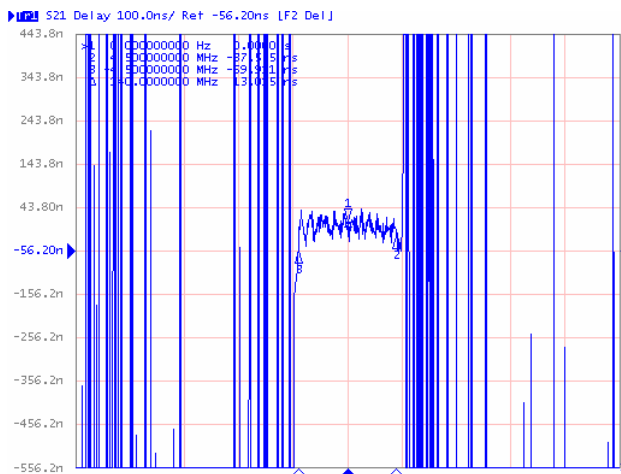
Frequency Respond



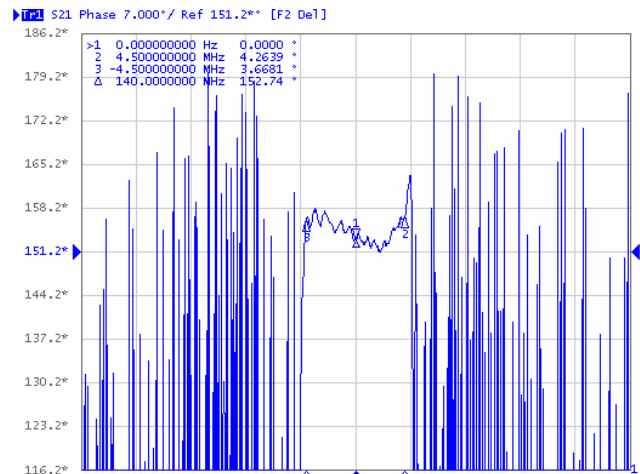
Passband Respond



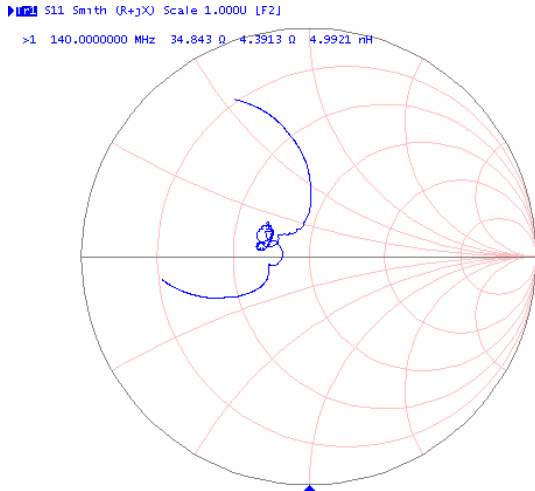
Group Delay Variation( $f_0 \pm 4.5\text{MHz}$ )



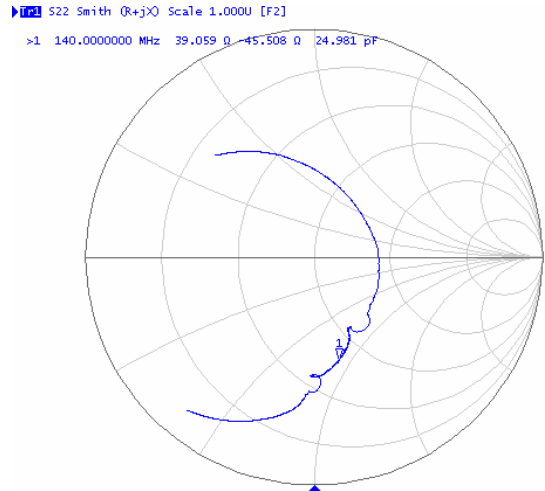
Phase Linearity( $f_0 \pm 4.5\text{MHz}$ )



Smith Chart S11



Smith Chart S22



**SIPAT Co., Ltd.**  
( CETC No. 26 Research Institute )  
Nanping Huayuan Road No. 14  
Chongqing, China, 400060

Part Number	LBT14050	
Rev. Date	2006-4-5	
Rev.	1.0	Page 3/3