

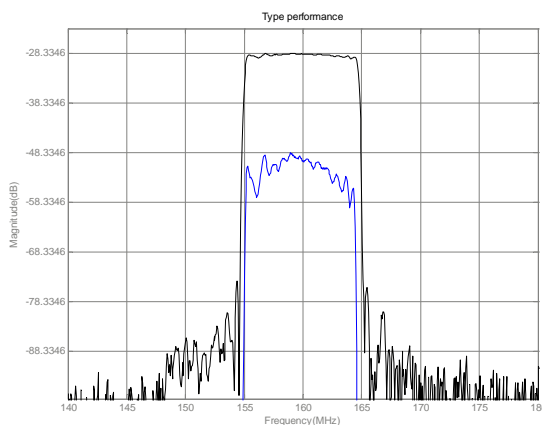


## LBT16009 SAW Filter Electrical Characteristic

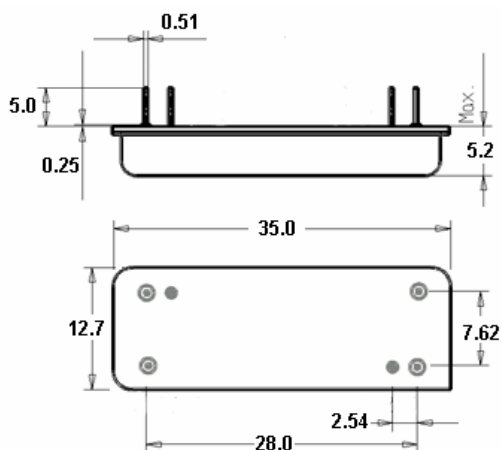
### Specifications

Parameter	Unit	Minimum	Typical	Maximum
<b>Center Frequency</b>	MHz	159.9	160	160.1
<b>Insertion Loss</b>	dB	-	28	29
<b>1 dB Bandwidth</b>	MHz	9.3	9.36	-
<b>3 dB Bandwidth</b>	MHz	9.5	9.59	-
<b>40 dB Bandwidth</b>	MHz	-	10.43	10.5
<b>Passband Variation</b>	dB	-	0.8	1.0
<b>Group Delay Variation</b>	nsec	-	90	200
<b>Absolute Delay</b>	usec	-	3.73	-
<b>Ultimate Rejection</b>	dB	45	48	-
<b>Substrate Material</b>		112 LiTaO3		
<b>Ambient Temperature</b>	°C	25		
<b>Package Size</b>		DIP3512 (35.0x12.7x5.2mm <sup>3</sup> )		

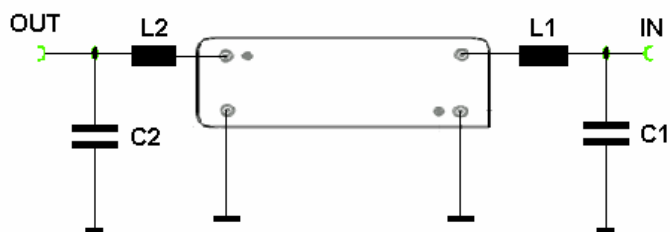
### Typical Performance



### Package Outline



### Matching Configuration



$$L1=L2=33nH$$

$$C1=C2=39pF$$

Source/Load Impedance=50 ohm

Notes - Component values may change depending on board layout.