

SHARP SERVICE MANUAL

No. S62X332LE244E



LCD COLOUR TELEVISION

LC-32LE244E

MODELS LC-32LE144E

In the interests of user-safety (Required by safety regulations in some countries) the set should be restored to its original condition and only parts identical to those specified should be used.

CONTENTS

SAFETY PRECAUTION

IMPORTANT SERVICE SAFETY PRECAUTION	i
Precautions for using lead-free solder	ii
End of life disposal	iii

CHAPTER 1. OPERATION MANUAL

[1] OPERATION MANUAL	1-1
----------------------------	-----

CHAPTER 2. Precaution when you open back cabinet

[1] Precaution when you open back cabinet.....	2-1
--	-----

CHAPTER 3. WB Adjustment Method

[1] WB Adjustment Method	3-1
--------------------------------	-----

CHAPTER 4. The Panel Type Changing Method (only for LC-32LE244E)

[1] The Panel Type Changing Method (only for LC-32LE244E)	4-1
---	-----

CHAPTER 5. Software Update Method

[1] Software Update Method	5-1
----------------------------------	-----

CHAPTER 6. Hotel Mode

[1] Hotel Mode	6-1
----------------------	-----

CHAPTER 7. TroubleShootingTable

[1] TroubleShooting Table	7-1
---------------------------------	-----

CHAPTER 8. Key Component on MB

[1] Key Component on MB	8-1
-------------------------------	-----

CHAPTER 9. OVERLL WIRING/BLOCK DIAGRAM

[1] OVERALL WIRING DIAGRAM (LC-32LE244E).....	9-1
[2] OVERALL WIRING DIAGRAM (LC-32LE144E).....	9-2
[3] SYSTEM BLOCK DIAGRAM.....	9-3

Parts Guide

Parts marked with "⚠" are important for maintaining the safety of the set. Be sure to replace these parts with specified ones for maintaining the safety and performance of the set.

SAFETY PRECAUTION

IMPORTANT SERVICE SAFETY PRECAUTION

■ Service work should be performed only by qualified service technicians who are thoroughly familiar with all safety checks and the servicing guidelines which follow:

■ **WARNING**

1. For continued safety, no modification of any circuit should be attempted.
2. Disconnect AC power before servicing.

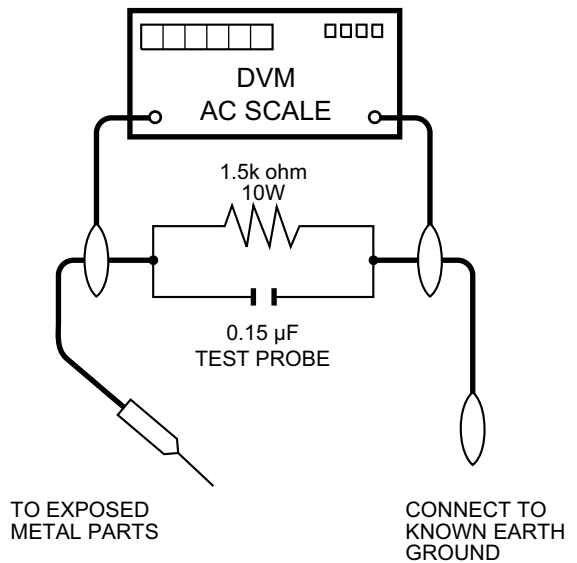
CAUTION:
 FOR CONTINUED PROTECTION AGAINST A RISK OF FIRE REPLACE ONLY WITH SAME TYPE FUSE.

■ **BEFORE RETURNING THE RECEIVER (Fire & Shock Hazard)**

Before returning the receiver to the user, perform the following safety checks:

3. Inspect all lead dress to make certain that leads are not pinched, and check that hardware is not lodged between the chassis and other metal parts in the receiver.
4. Inspect all protective devices such as non-metallic control knobs, insulation materials, cabinet backs, adjustment and compartment covers or shields, isolation resistor-capacitor networks, mechanical insulators, etc.
5. To be sure that no shock hazard exists, check for leakage current in the following manner.
 - Plug the AC cord directly into a 220~240 volt AC outlet.
 - Using two clip leads, connect a 1.5k ohm, 10 watt resistor paralleled by a 0.15µF capacitor in series with all exposed metal cabinet parts and a known earth ground, such as electrical conduit or electrical ground connected to an earth ground.

- Use an AC voltmeter having with 5000 ohm per volt, or higher, sensitivity or measure the AC voltage drop across the resistor.
- Connect the resistor connection to all exposed metal parts having a return to the chassis (antenna, metal cabinet, screw heads, knobs and control shafts, escutcheon, etc.) and measure the AC voltage drop across the resistor.
 All checks must be repeated with the AC cord plug connection reversed. (If necessary, a nonpolarized adaptor plug must be used only for the purpose of completing these checks.)
 Any reading of 1.05 V peak (this corresponds to 0.7 mA peak AC.) or more is excessive and indicates a potential shock hazard which must be corrected before returning the monitor to the owner.



SAFETY NOTICE

Many electrical and mechanical parts in LCD color television have special safety-related characteristics.

These characteristics are often not evident from visual inspection, nor can protection afforded by them be necessarily increased by using replacement components rated for higher voltage, wattage, etc.

Replacement parts which have these special safety characteristics are identified in this manual; electrical components having such features are identified by “⚠” and shaded areas in the Replacement Parts List and Schematic Diagrams.



For continued protection, replacement parts must be identical to those used in the original circuit.

The use of a substitute replacement parts which do not have the same safety characteristics as the factory recommended replacement parts shown in this service manual, may create shock, fire or other hazards.

Precautions for using lead-free solder

■Employing lead-free solder

- “PWBs” of this model employs lead-free solder. The LF symbol indicates lead-free solder, and is attached on the PWBs and service manuals. The alphabetical character following LF shows the type of lead-free solder.

Example:

LFa

Sn-Ag-Cu

Indicates lead-free solder of tin, silver and copper.

LFa/a

Sn-Ag-Cu

Indicates lead-free solder of tin, silver and copper.

■Using lead-free wire solder

- When fixing the PWB soldered with the lead-free solder, apply lead-free wire solder. Repairing with conventional lead wire solder may cause damage or accident due to cracks.

As the melting point of lead-free solder (Sn-Ag-Cu) is higher than the lead wire solder by 40 °C, we recommend you to use a dedicated soldering bit, if you are not familiar with how to obtain lead-free wire solder or soldering bit, contact our service station or service branch in your area.

■Soldering

- As the melting point of lead-free solder (Sn-Ag-Cu) is about 220 °C which is higher than the conventional lead solder by 40 °C, and as it has poor solder wettability, you may be apt to keep the soldering bit in contact with the PWB for extended period of time. However, Since the land may be peeled off or the maximum heat-resistance temperature of parts may be exceeded, remove the bit from the PWB as soon as you confirm the steady soldering condition.

Lead-free solder contains more tin, and the end of the soldering bit may be easily corroded. Make sure to turn on and off the power of the bit as required.

If a different type of solder stays on the tip of the soldering bit, it is alloyed with lead-free solder. Clean the bit after every use of it.

When the tip of the soldering bit is blackened during use, file it with steel wool or fine sandpaper.

- Be careful when replacing parts with polarity indication on the PWB silk.

Lead-free wire solder for servicing

Part No.	★	Description	Code
ZHNDAi123250E	J	φ0.3mm 250g (1roll)	BL
ZHNDAi126500E	J	φ0.6mm 500g (1roll)	BK
ZHNDAi12801KE	J	φ1.0mm 1kg (1roll)	BM

End of life disposal



Attention: Your product is marked with this symbol. It means that used electrical and electronic products should not be mixed with general household waste. There is a separate collection system for these products.

A. Information on Disposal for Users (private households)

1. In the European Union

Attention: If you want to dispose of this equipment, please do not use the ordinary dust bin!

Used electrical and electronic equipment must be treated separately and in accordance with legislation that requires proper treatment, recovery and recycling of used electrical and electronic equipment.

Following the implementation by member states, private households within the EU states may return their used electrical and electronic equipment to designated collection facilities free of charge*. In some countries* your local retailer may also take back your old product free of charge if you purchase a similar new one.

*) Please contact your local authority for further details.

If your used electrical or electronic equipment has batteries or accumulators, please dispose of these separately beforehand according to local requirements.

By disposing of this product correctly you will help ensure that the waste undergoes the necessary treatment, recovery and recycling and thus prevent potential negative effects on the environment and human health which could otherwise arise due to inappropriate waste handling.

2. In other Countries outside the EU

If you wish to discard this product, please contact your local authorities and ask for the correct method of disposal.

For Switzerland: Used electrical or electronic equipment can be returned free of charge to the dealer, even if you don't purchase a new product. Further collection facilities are listed on the homepage of www.swico.ch or www.sens.ch.

B. Information on Disposal for Business Users

1. In the European Union

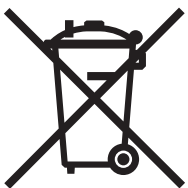
If the product is used for business purposes and you want to discard it:

Please contact your SHARP dealer who will inform you about the take-back of the product. You might be charged for the costs arising from take-back and recycling. Small products (and small amounts) might be taken back by your local collection facilities.

For Spain: Please contact the established collection system or your local authority for take-back of your used products.

2. In other Countries outside the EU

If you wish to discard of this product, please contact your local authorities and ask for the correct method of disposal.



For EU: The crossed-out wheeled bin implies that used batteries should not be put to the general household waste! There is a separate collection system for used batteries, to allow proper treatment and recycling in accordance with legislation. Please contact your local authority for details on the collection and recycling schemes.

For Switzerland: The used battery is to be returned to the selling point.

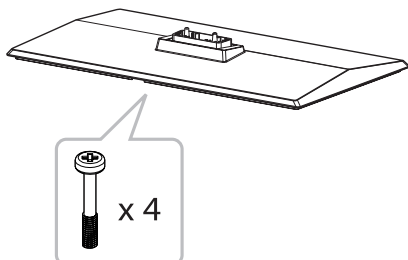
For other non-EU countries: Please contact your local authority for correct method of disposal of the used battery.

CHAPTER 1. OPERATION MANUAL

[1] OPERATION MANUAL

Supplied accessories

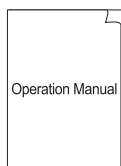
Stand unit and screws



Remote Control (x1)



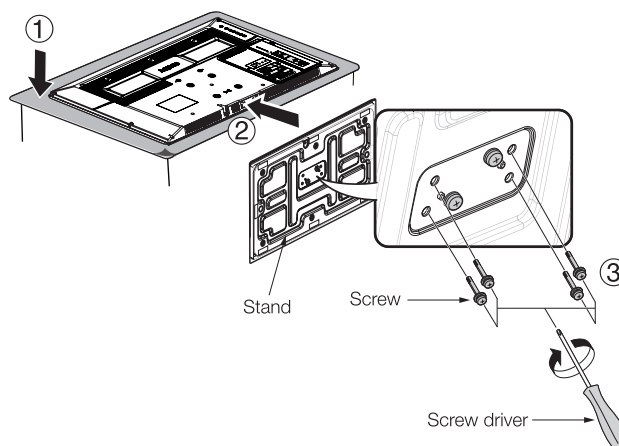
Operation Manual



R03 ("AAA" size) battery (x2)



Mount the TV base



1. Put the TV with its face down on a safe surface covered by a soft and smooth cloth.
2. Adjust the TV base to the bottom of the TV. Please be sure the arrow heads are facing front.
3. Fasten the screws by using a cross-head screwdriver (not supplied).

NOTE

- To detach the TV stand, do these steps in reverse order.

Mounting the TV on a wall

- **This TV should be mounted on a wall only with a SHARP wall mount bracket. The use of other wall mount brackets may result in an unstable installation and may cause serious injuries.**
- **Mounting the LCD colour TV requires special skills and should only be performed by qualified service personnel. Customers should not attempt to do the work themselves. SHARP bears no responsibility for improper mounting or mounting that results in accident or injury.**
- You can ask qualified service personnel about using an optional bracket to mount the TV to a wall.
- When you mount the TV on a wall, you should attach the supporting post.
- Detach the cable tie on the rear of the TV when using the optional mount bracket.
- Optional accessory: AN-130AG1

Part name	Part number
Wall mount bracket	AN-130AG1

Remote control unit

⏻ (POWER)

Press to turn the LCD TV on or to enter standby mode.

↔ (INPUT SOURCE)

Press to select an input source.

0-9 DIGIT BUTTONS

Press to select a TV channel directly.

EPG (Electronic Programme Guide)

Press to display electronic programme guide when watching digital channels.

DTV/ATV

Press to switch between ATV and DTV channels.

⏪ (+/-)

Press to adjust the volume.

🔇

Press to toggle audio on and off. You can also press ⏪ (+/-) to restore the previous volume level.

⏸ (Wide mode)

Press to select picture formats.

P (▲ / ▼)

Press to select programme channel.

⊞/⊟

Press to select **MONO / STEREO / DUAL I / DUAL II** for ATV channel. Press to select Audio language for DTV channel.

↩ (RETURN)

Press to return to the previous "Menu" screen.

⏴ ⏵ <>

Press to navigate and confirm your selection.

OK

Press to activate a setting.

MENU

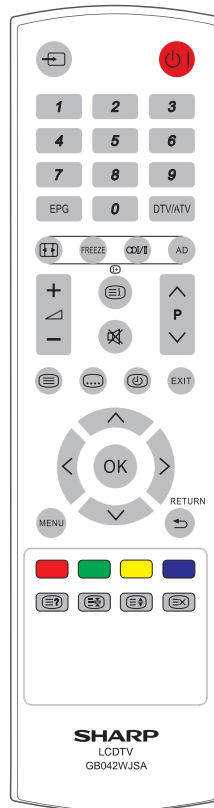
Press to activate the LCD TV OSD.

EXIT

Press to exit the LCD TV OSD or return to the previous layer.

R/G/Y/B (Colour Button)

Press to select the pictures with various colours of text. Different channels display different functions.



⏹ (HOLD)

Press to stop the scrolling of pages. The text decoder stops receiving data.

⏹ (?) (REVEAL)

Reveal hidden information such as answers to a quiz.

FREEZE

Press to freeze a moving image on the screen (only available when your input source is TV). The SCART output signal will also be frozen when you are watching digital channels.

Caution: Do not freeze the video image for long periods of time, as this may damage the LCD TV screen.

⏹ (X)

Press to cancel the teletext screen.

⌚

Press to display the Time screen.

⏹ (TELETEXT)

Press to activate Teletext. Press again to activate Teletext with TV. Press again to turn off Teletext.

AD (Audio Description)

Press to switch the Audio Description On or Off.

⏹ (SUBTITLE)

For DTV, press to toggle off / between available subtitle languages. For ATV, press to toggle off / between available subtitle pages in Teletext.

⏹ (Top/Bottom/Full)

Press to change the font size: Full screen, Top half, and Bottom half.

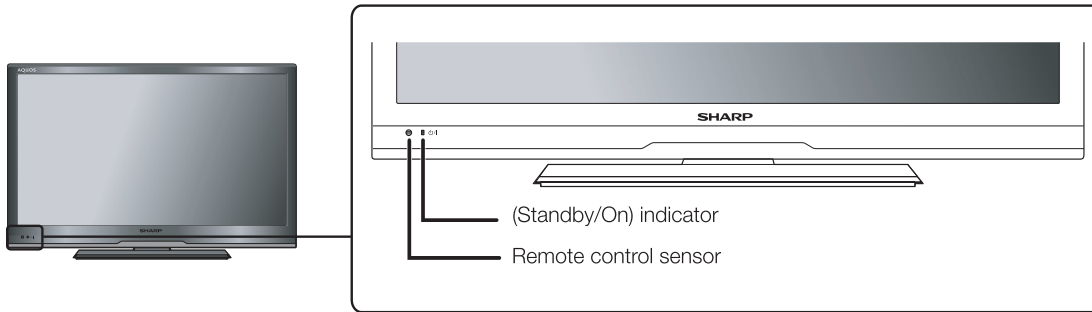
⏹ (INDEX)

Press to return to page 100 or the index page; and then press 0 to 9. The teletext page will be numbered and added to the page you select or the secondary item.

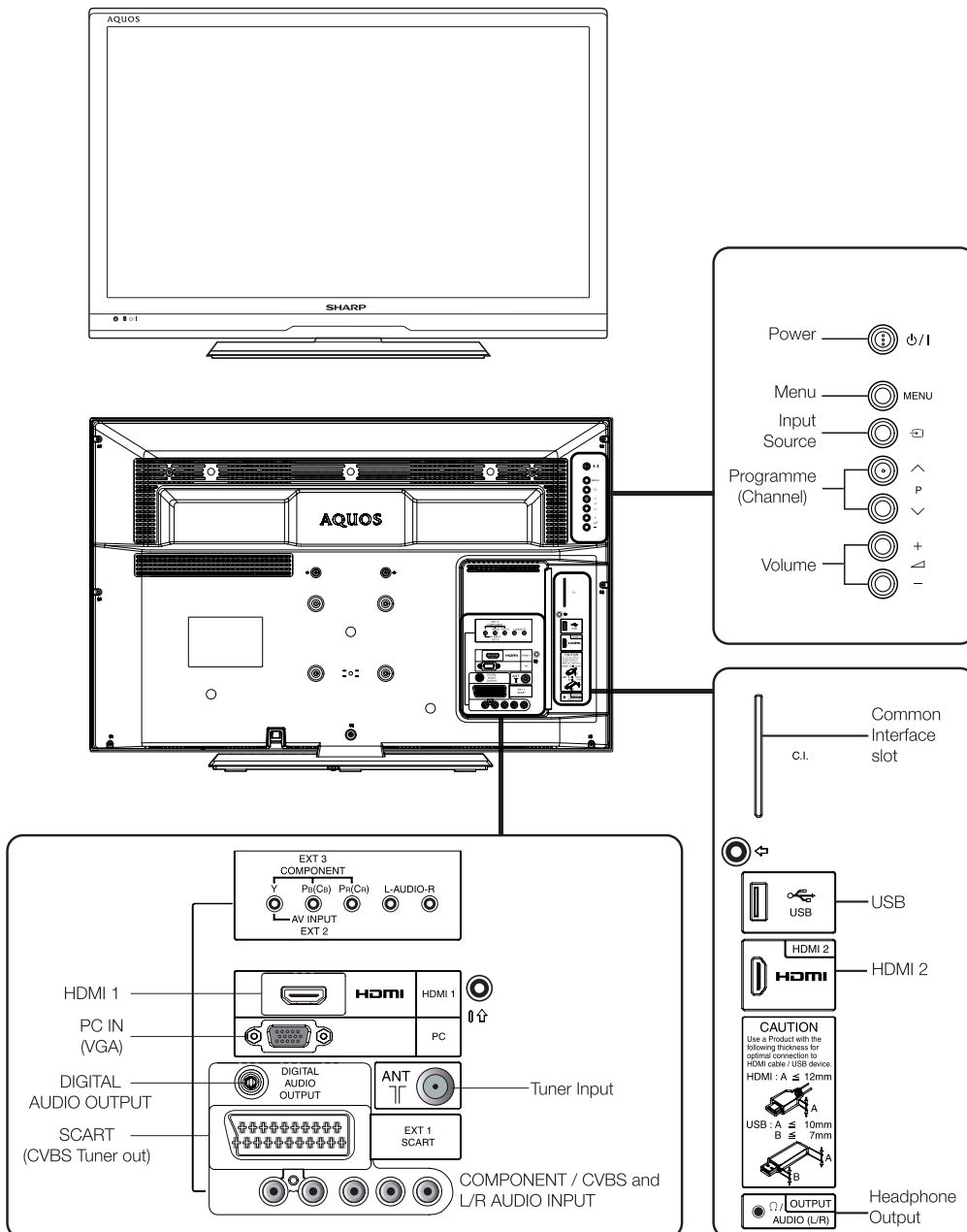
⏹ (+)

Press to display programme information, if available.

TV (Front view)



TV (Rear view)



CHAPTER 2. Precaution when you open back cabinet

[1] Precaution when you open back cabinet

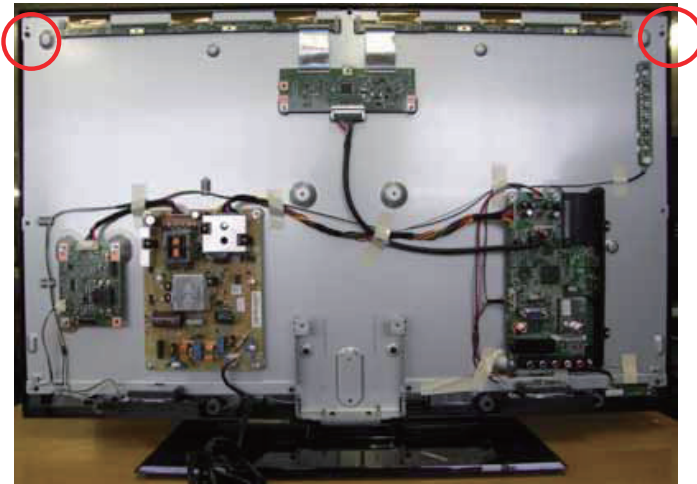
1. Do not set up TV without back cabinet.

If you'd like to do it, please screw the following two points before set it up absolutely.

Or it is at risk of giving damage to SOF. Please handle it with care.

And screw part number is XEBS730P06000. You need to order it firstly.

If In case you use original screw (XEBS830P08000), there is a possibility of giving damage to panel.

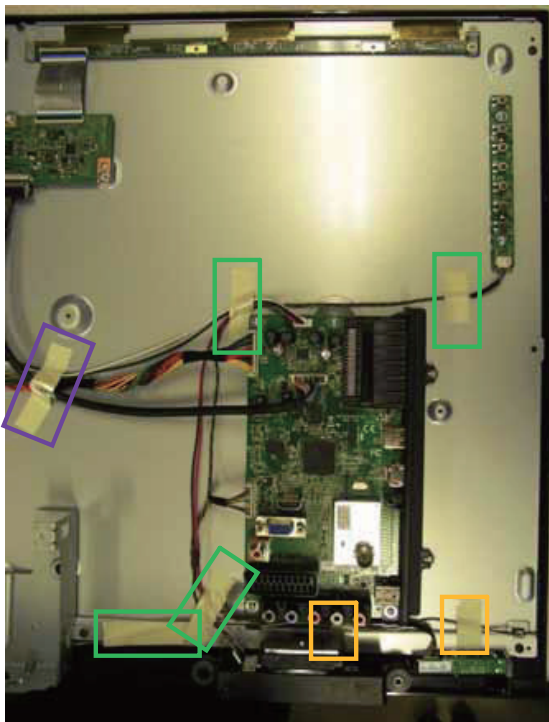





2. Please surely return WIRE FORMING, WH and TAPING to original position when you remove wire for exchange PWB or exchange whole module and so on.

If in this occasion occurs, please refer to the following explanation and put everything back into place.

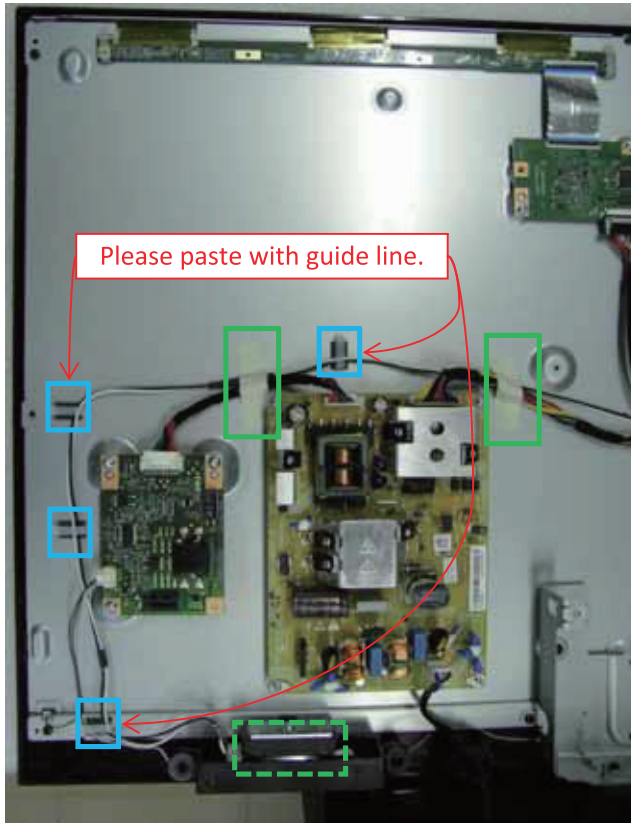
2-1.WH and Taping location

<Right side>



	ZTAPEP179030E	X2
	ZTAPEP179050E	X4
	ZTAPEP179070E	X1

<Left side>

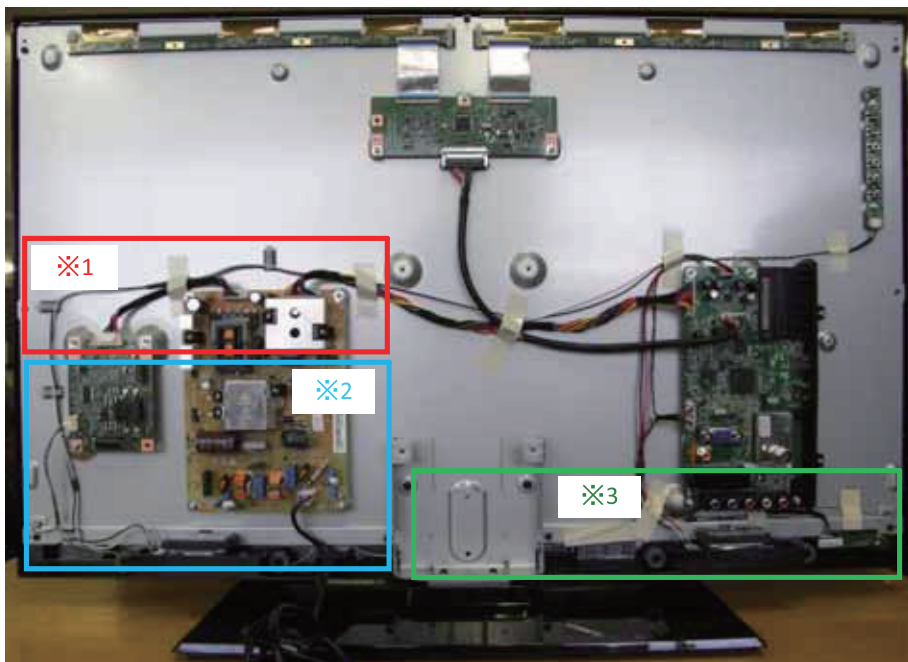


LHLDWA294WJUZ X4

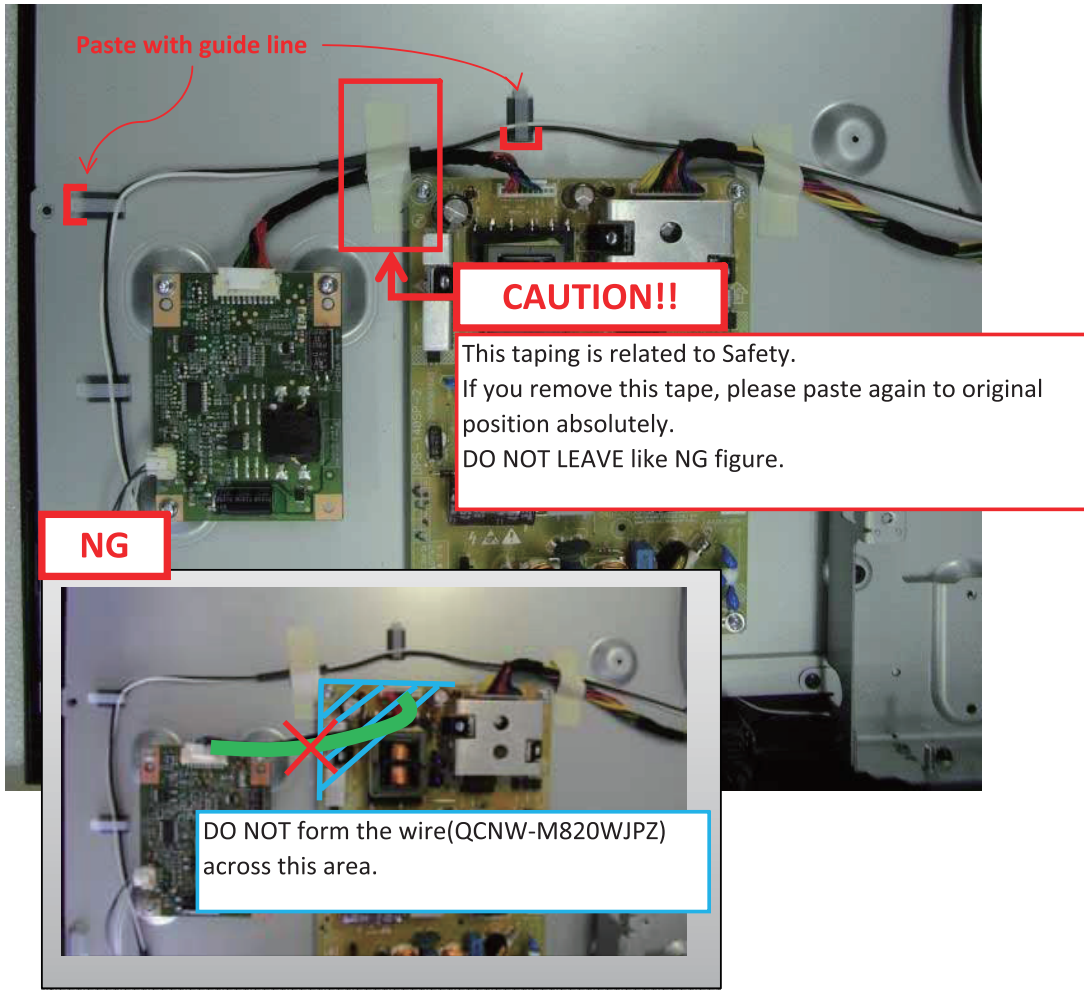
ZTAPEP179050E X2

2-2. Details information related to wire forming

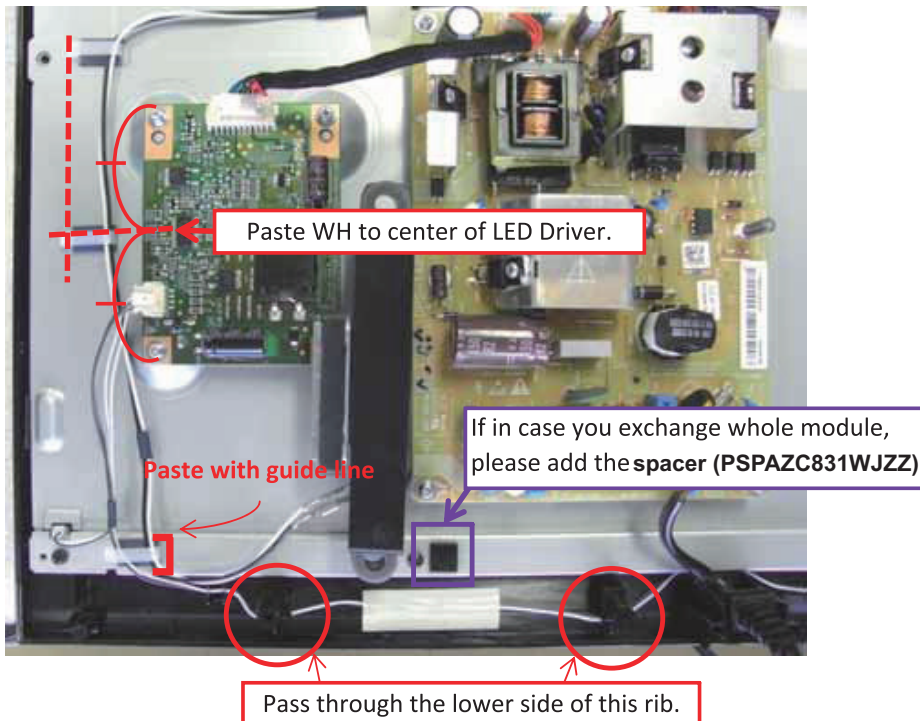
< Overall view >



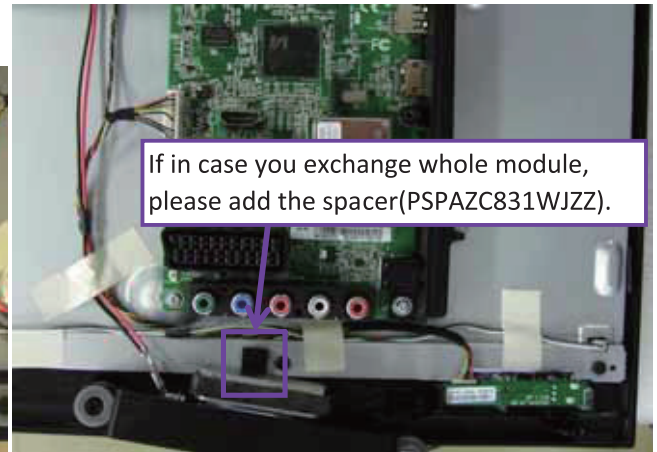
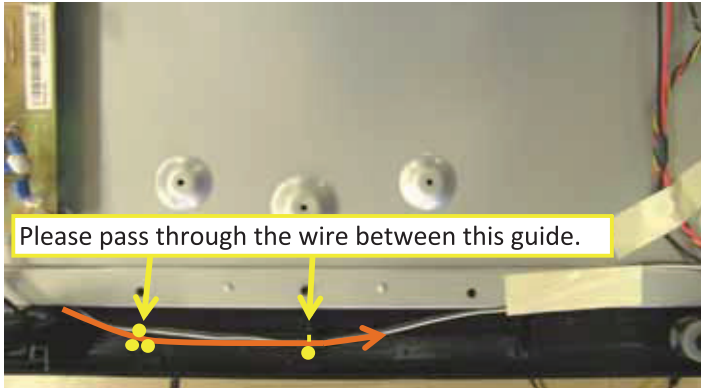
※1 Wire forming for Red area



※2 Wire forming for blue area



※3 Wire forming for green area



CHAPTER 3. WB Adjustment Method

[1] WB Adjustment Method

1 Input 80% White pattern from HDMI



2 Use color analyzer to adjust x and y value. for example CA-210



3 Set the color analyzer's probe to the center position of screen.



4 Enter the adjustment mode in TV. Prepare **Remote** controller
The procedure is as below

WIDE → Red → Green → Blue → Yellow → **Input**

*Blue character : Use **Remote** controller

*Red Character : Use **Key**

Then, OSD shows in screen (Factory menu) and change page 1 to 2 by RC



- 5 Change R,G and B value to adjust WB
 Firstly, serviceman adjusts the "COOL" temperature
 After finished the adjustment ,
 Continue to adjust the "MEDIUM" and "WARM" by same procedure.



The specification of x and y value is as below

	Cool / (12000°K)	Warm/ (6500°K)	Medium/ (9000°K)
x (center)	0.272 ± 0.005	0.314 ± 0.010	0.289 ± 0.010
y (center)	0.277 ± 0.005	0.319 ± 0.010	0.291 ± 0.010

- 6 After finished all color temp adjustment, push "Exit" key.

CHAPTER 4. The Panel Type Changing Method (only for LC-32LE244E)

[1] The Panel Type Changing Method (only for LC-32LE244E)

1 Please do the following in case of a MAIN board exchange.

2 Need to make a dat file and the name is "Model_Setting_LE244.dat"
*make the dat file from txt file



3 Move the dat file to USB memory.

4 Insert it into the USB slot.



5 The panel change procedure is as below

Plug in the AC cord (AC power on) with INPUT and VOL-down key

*Note: before Power Indicator LED light GREEN, please hold pushing INPUT and VOL-down key
AC power on → LED RED → LED GREEN → LED BLINKING (RED⇔GREEN)

After finished the panel setting, the LED keep GREEN.

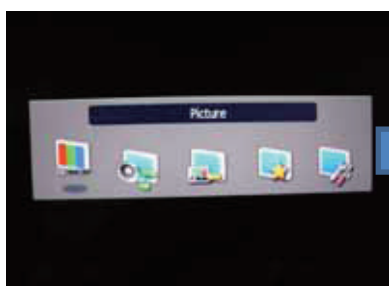
6 Eject USB from the slot and AC power off

CHAPTER 5. Software Update Method

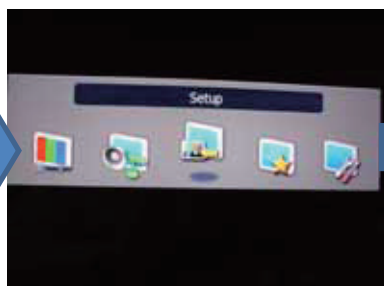
[1] Software Update Method

- 1 Prepare USB memory and new SW
- 2 Move the new SW(bin file) to USB memory.
- 3 Insert it into the USB slot.
- 4 Turn on the TV
- 5 ①MENU→②SETUP→③Software Update→④USB Upgrade→OK

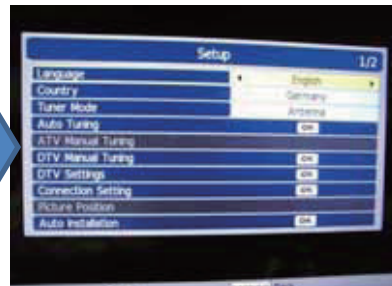
①



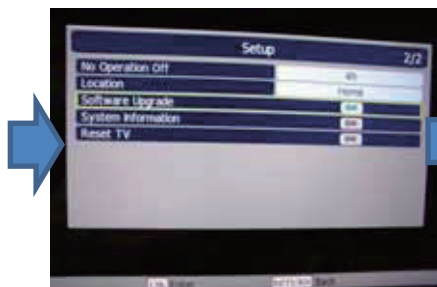
②



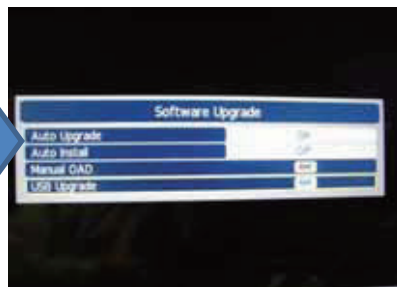
③



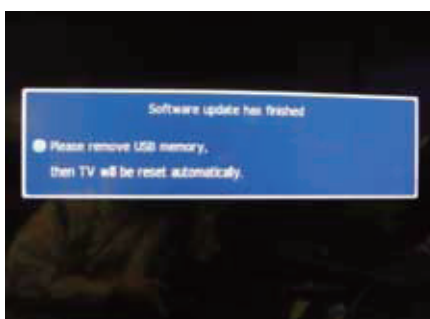
③



④



Then, TV start SW update and after finished it



Note:

At the time of DTV and external input mode, it can update from the pop up menu displayed at the time of USB insertion.

- 6 Eject USB memory from the USB slot and TV will be reset automatically.
- 7 Confirm the software version.
MENU → SETUP → System information


CHAPTER 6. Hotel Mode

[1] Hotel Mode

LC-LE244/144 Hotel mode specification

Menu Page	Item No.	Function	Off	On	Default
1	1	Hotel Mode On/Off	Hotel Mode Off	Hotel Mode On	Off
	2	Button Control Lock Disable TV Front/Side buttons	All keys work normally	All keys are disabled	Off
	3	Button Lock W/O input selector keys. Disable TV Front/Side buttons except for input select key	All keys work normally	All keys are disabled except for input	Off
	4	Disable remote control (In Service Mode, not disabled)	Remote control works normally	Disabled remote control	Off
	5	Disable Setup Menu	Setup menu is normally displayed	Setup menu is disabled	Off
	6	Setup Menu W/O Lang. Disable setup menu except for language setting *Only language setting is available in Setup menu	Setup menu is normally displayed	Only language setting is displayed in setup menu	Off
	7	Max volume setting Limit range of maximum volume control	0 ~ 100 [dec]		100
	8	Digital Tuner DTV source selection depends on Digital Tuner setting	Digital TV is disabled	Digital TV works normally	On
	9	USB Port USB source selection depends on USB port setting	Hide USB in inputs menu	USB source works normally	On
	10	TV to USB Save the data of TV settings to USB memory (includes user settings, hotel mode settings and channel tables)	Select YES and then press OK to save the data to USB memory		NO
	11	USB to TV Load the data of TV settings in USB memory to TV (includes user settings, the hotel mode settings and channel tables)	Select YES and then press OK to load the data in USB memory to TV		NO
	2		Disable NIT Update Disable channel list updated by NIT (this function is for disable NIT update, only if the country is set to France)	Channel list is able to be updated by NIT	Disable channel list updated by NIT
		Fixed Pos/Video Turn the TV on by power button on the remote/side key, then display goes to fixed POS/Video	Last memory	Fixed pos/video set	Off
1		ATV: 1~99[dec], SCART, AV, YPbPr, HDMI1, HDMI2, PC, DTV: 1~N[dec](depends on channel auto) Input sources selection for fixed Pos/Video setting			1 (ATV)
2		Fixed Volume Turn the TV on by power button on the remote/side key, then volume is set to the forced level 0 ~ 100 [dec] Power on volume level for fixed volume setting	Last memory	Fixed volume set	Off
		Fixed Picture Mode Turn the TV on by power button on the remote/side key, then the fixed picture mode is set to the forced selection Dynamic, Standard, Soft, Movie, Memory Power on picture mode for fixed picture mode setting	Last memory	Fixed picture mode set	Off
		Welcome message Turn the TV on by power button on the remote/side key, then a message is displayed. Default, 8 Sec., 15 Sec. Display period(5 Sec., 8 Sec., 15 Sec.) of a message for welcome message setting	Normal case	"WELCOME TO OUR HOTEL" is displayed	Off
		Teletext Teletext functions depend on Teletext setting	Disable Teletext functions and operations	Teletext works normally	On
6		ATV/DTV P+/P- Enable switching TV programs by P+/P- between ATV and DTV	CH up/down by P+/P- in current TV source	CH up/down by P+/P- between ATV and DTV	Off
7		Reset menu Set to default of all setting in Hotel mode menu	Select YES and then press OK to load default hotel settings		NO

Operations procedure to enter hotel mode menu:

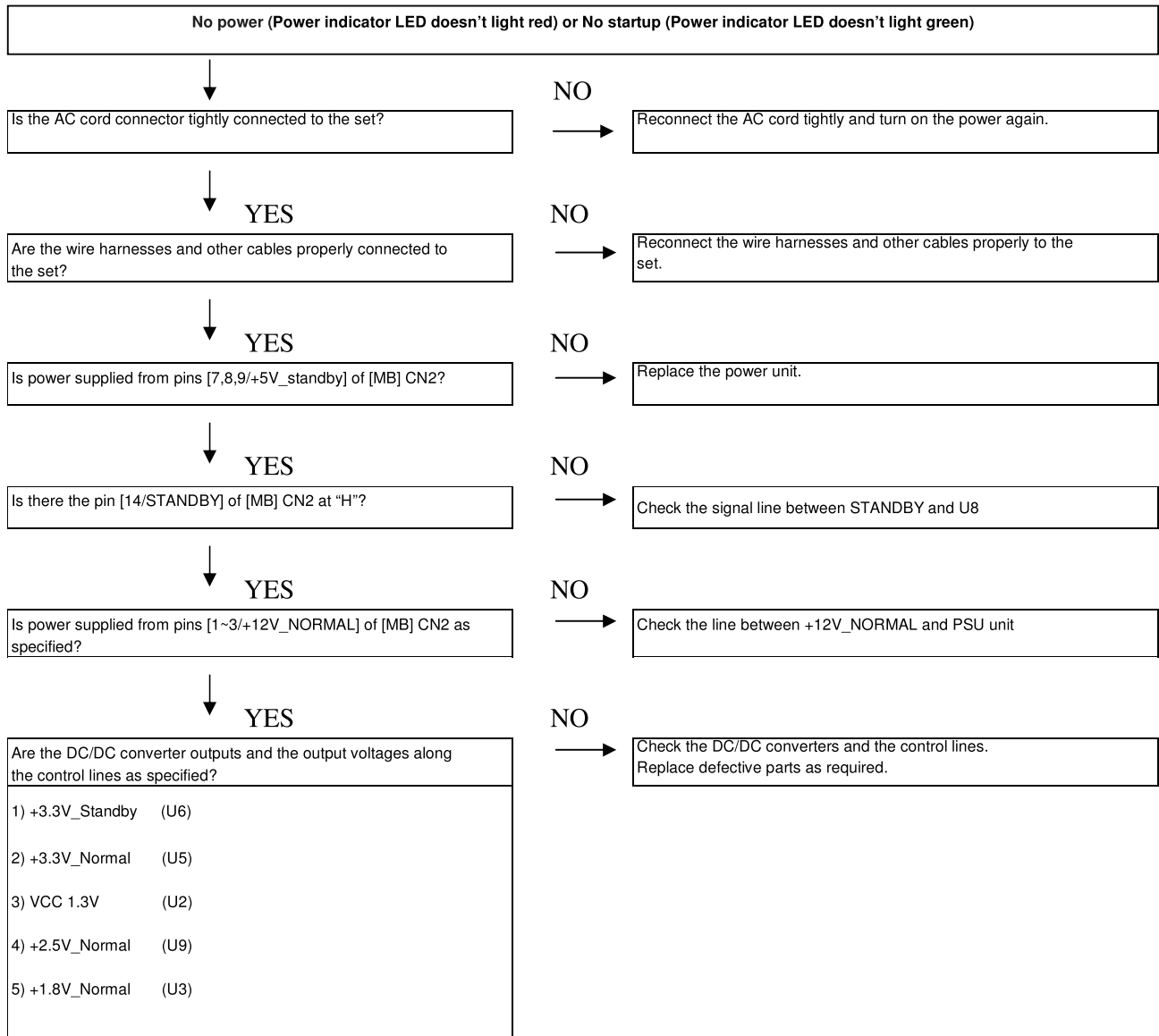
- 1 Press  to show wide mode control menu
- 2 Press "UP" button on the remote
- 3 Within 2 Sec., press "DOWN" button on the remote and hold the button down more than 6 seconds
- 4 Press "INPUT" button on the side keypad, then hotel mode menu will appear

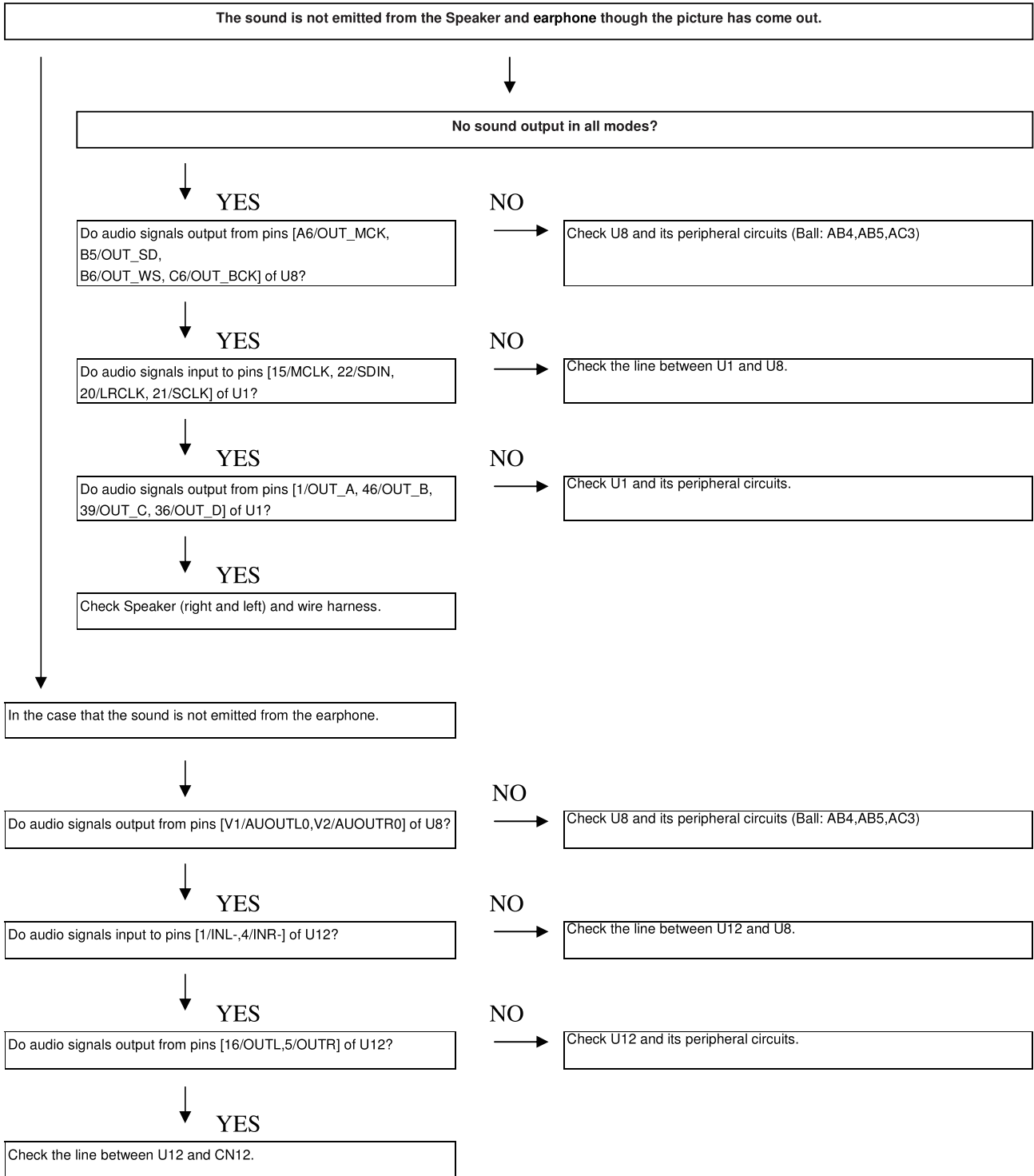
To exit hotel mode menu:

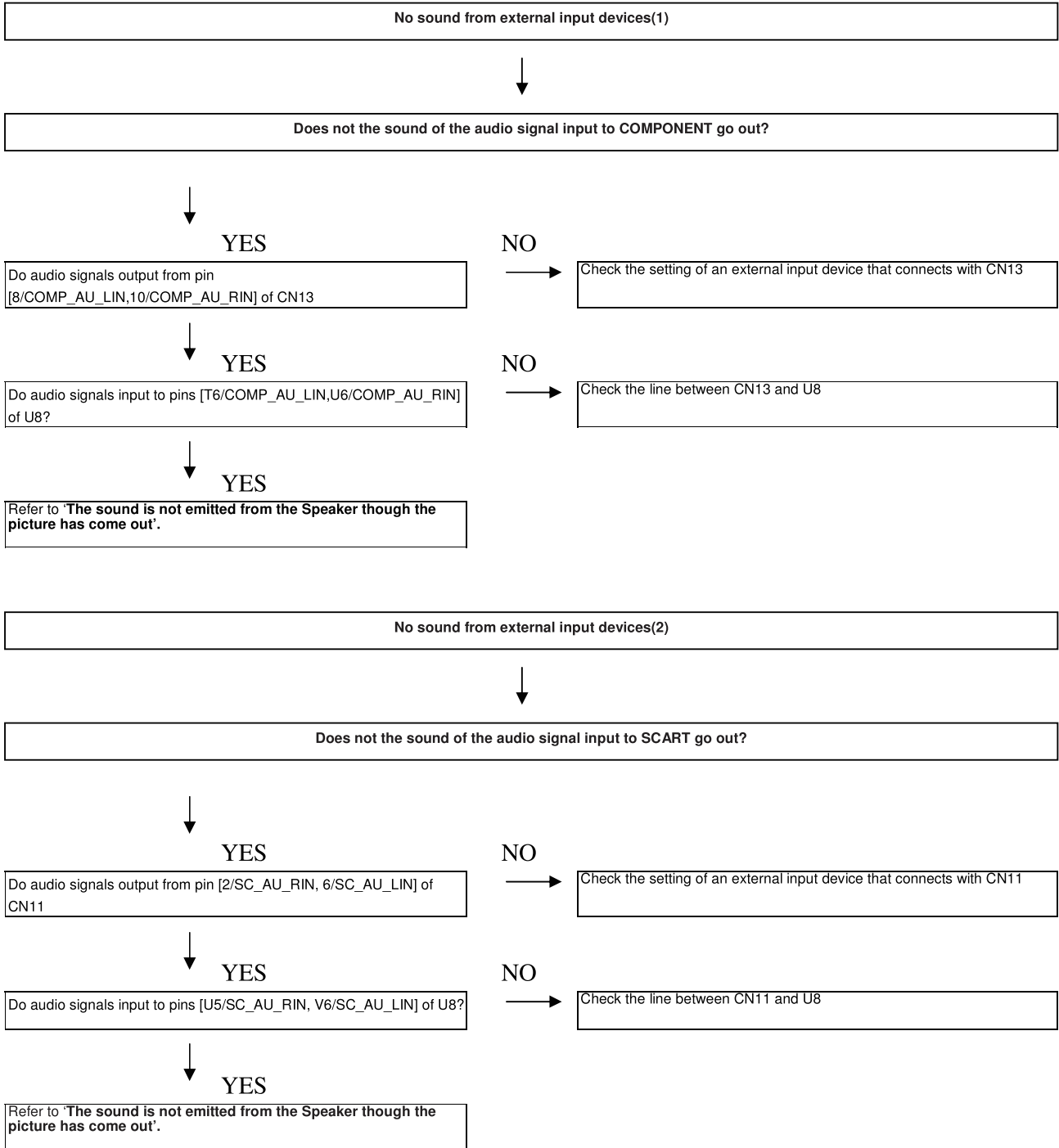
- ** Press "EXIT" button on the remote

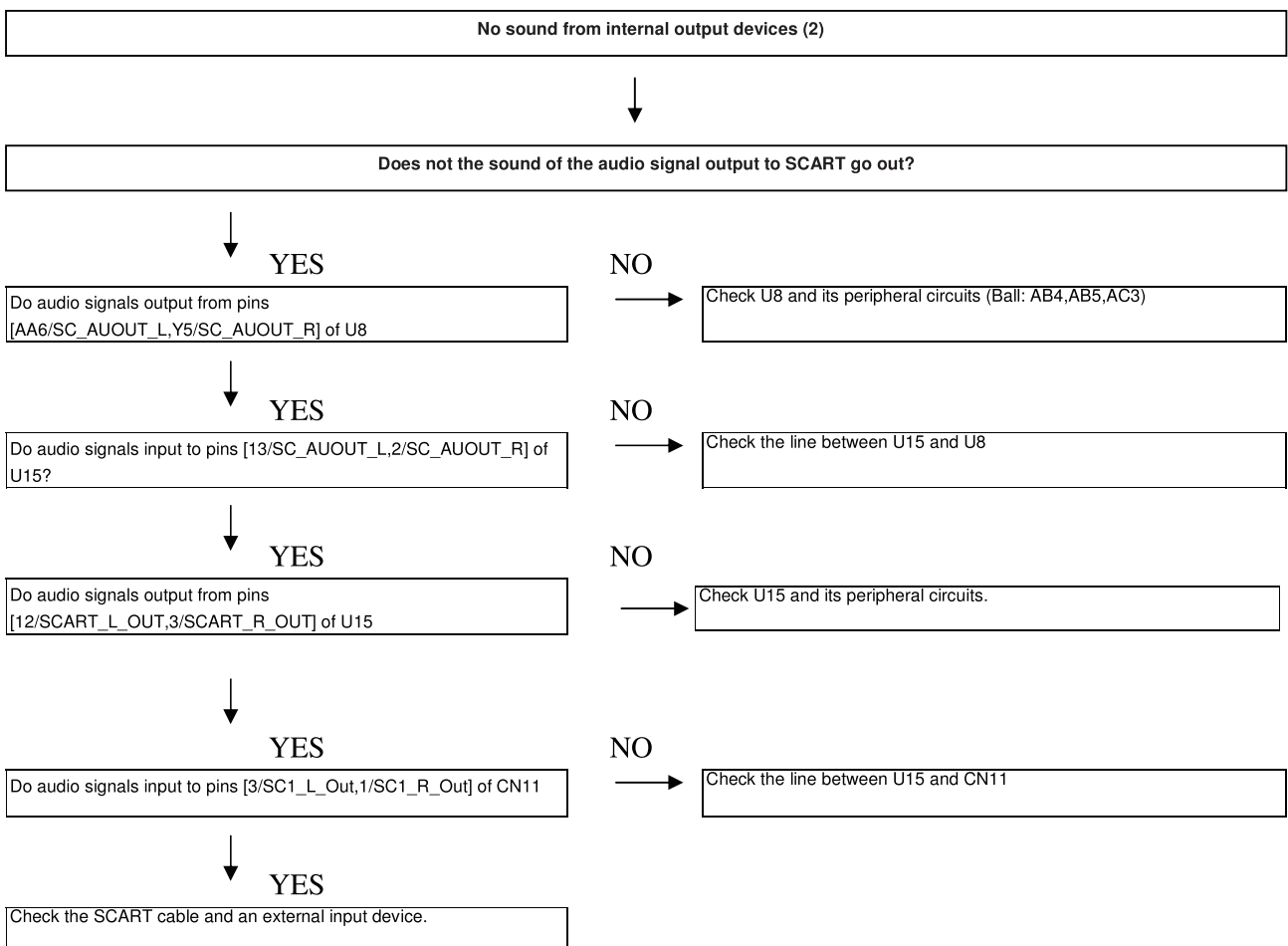
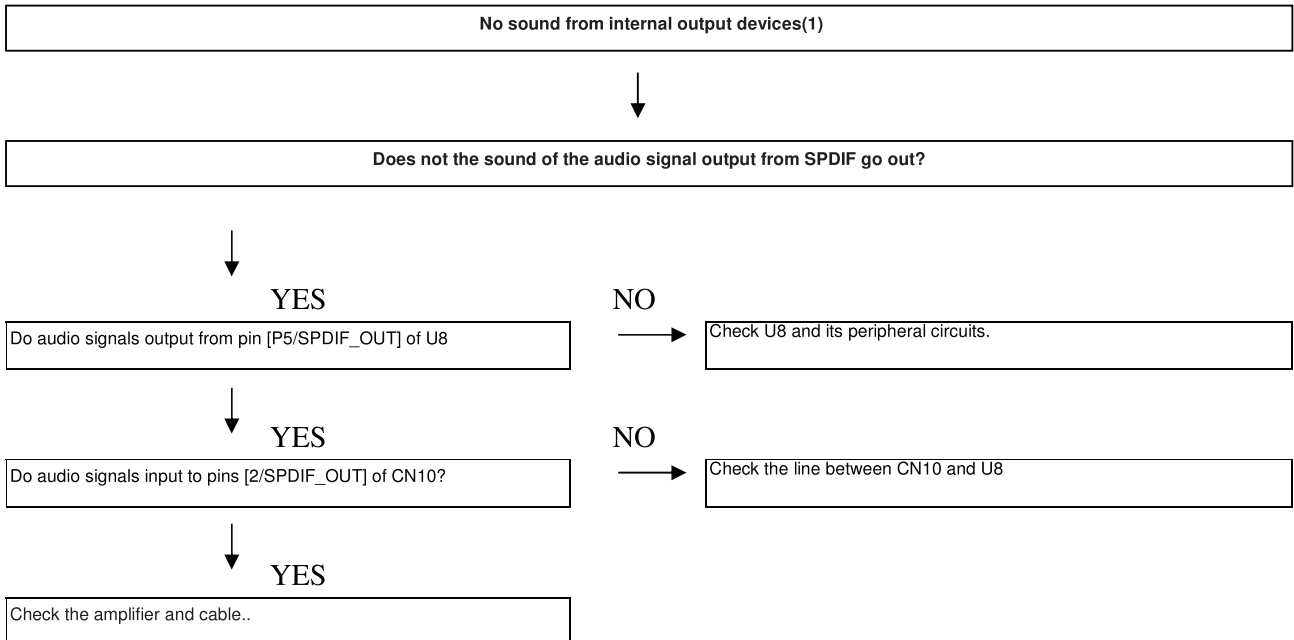
CHAPTER 7. TroubleShootingTable

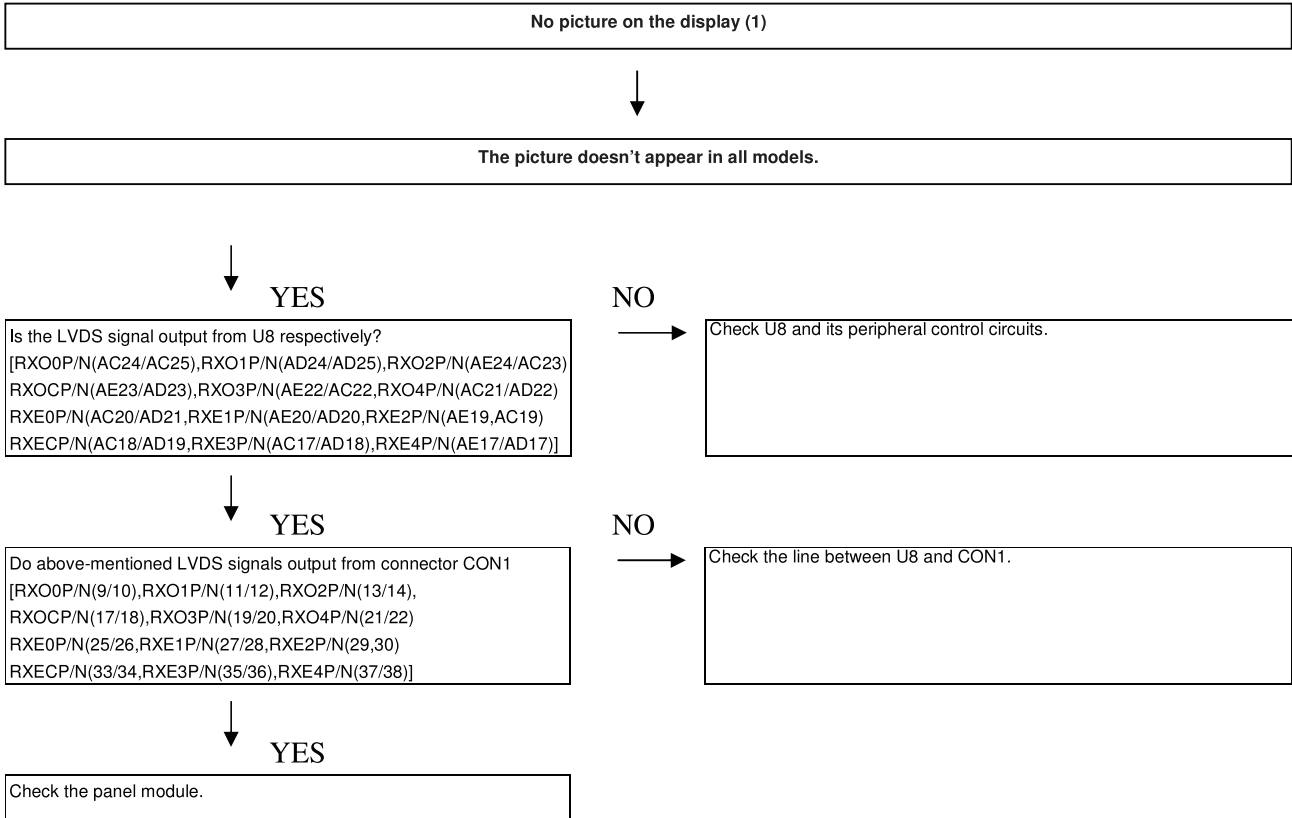
[1] TroubleShooting Table

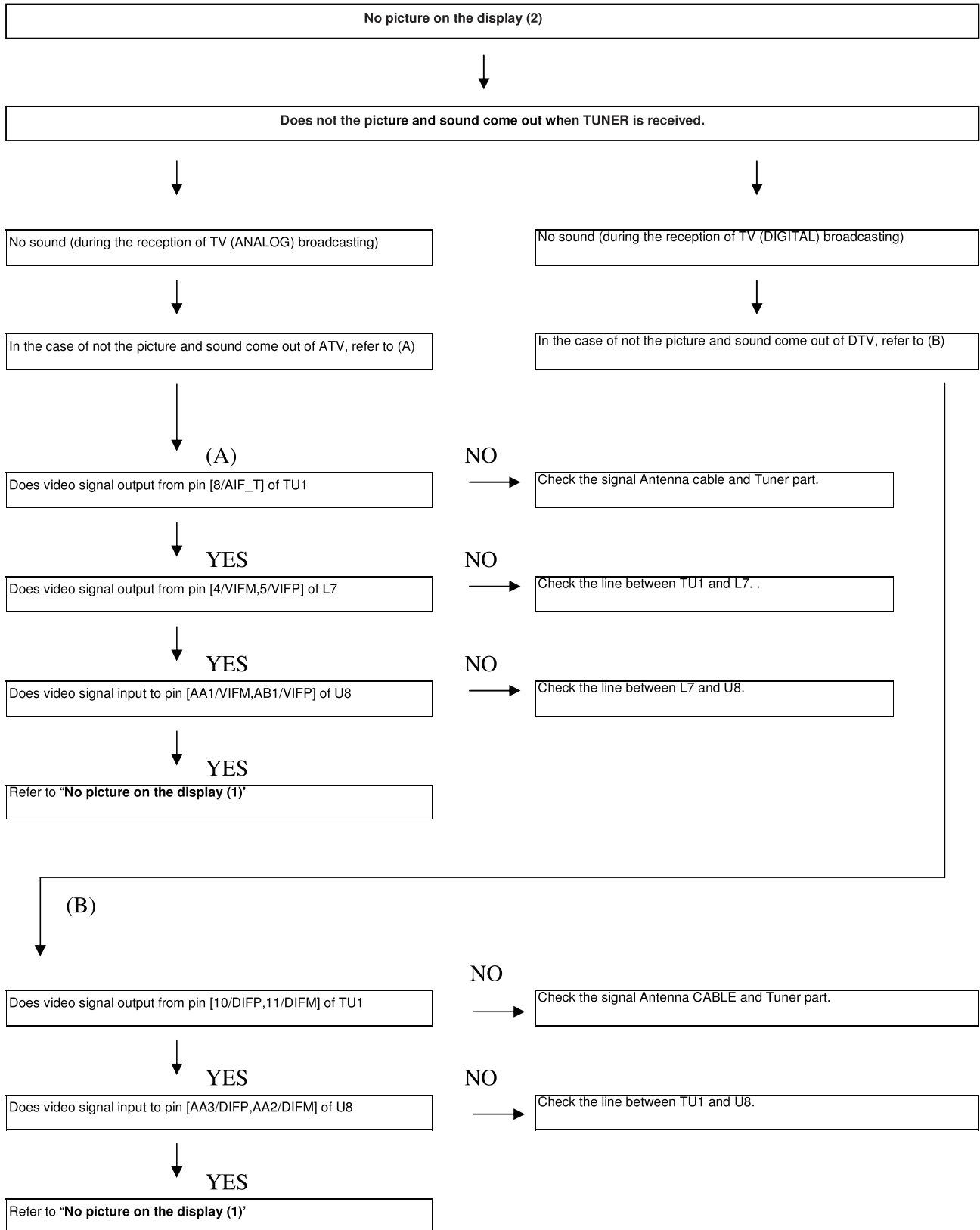


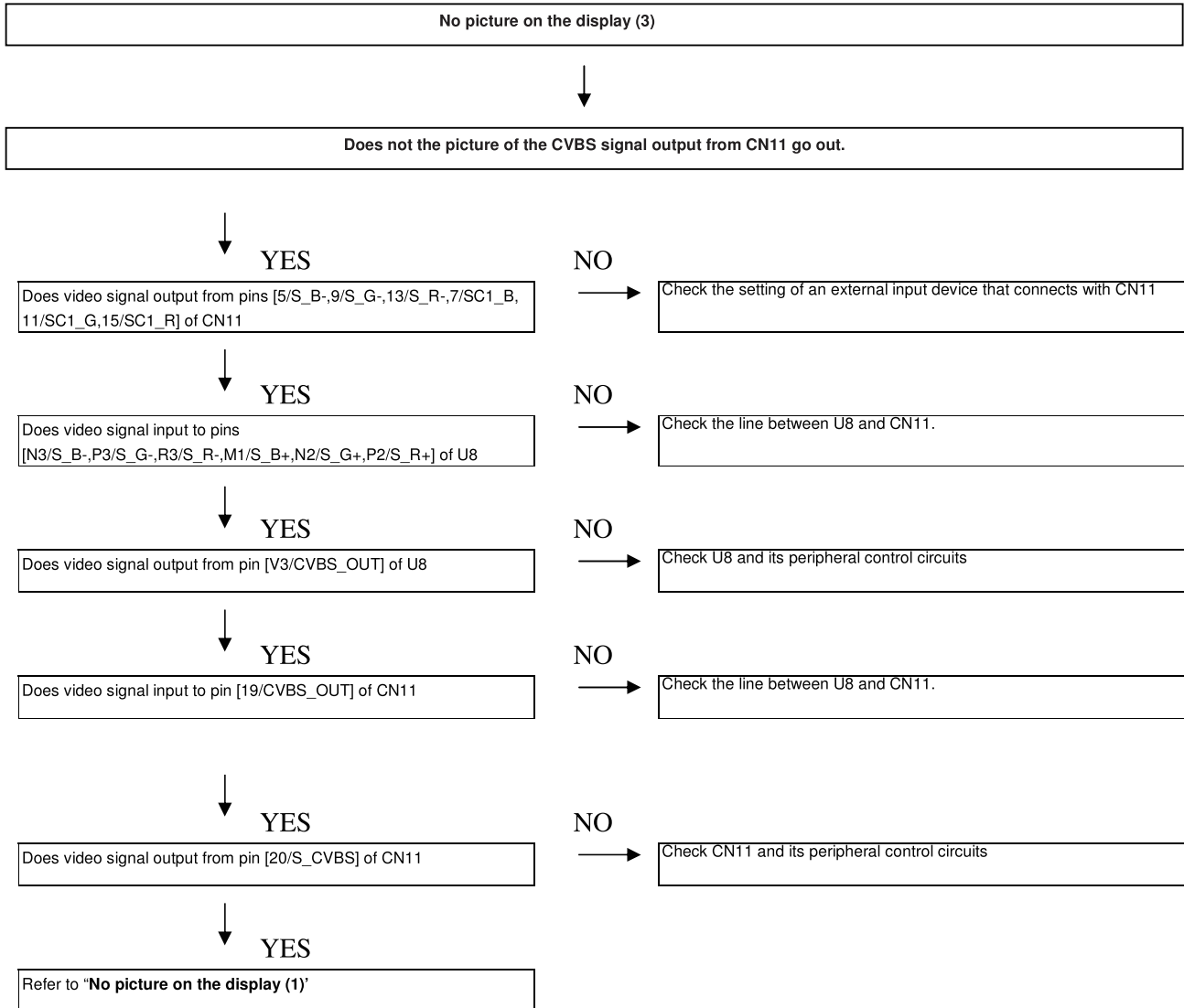


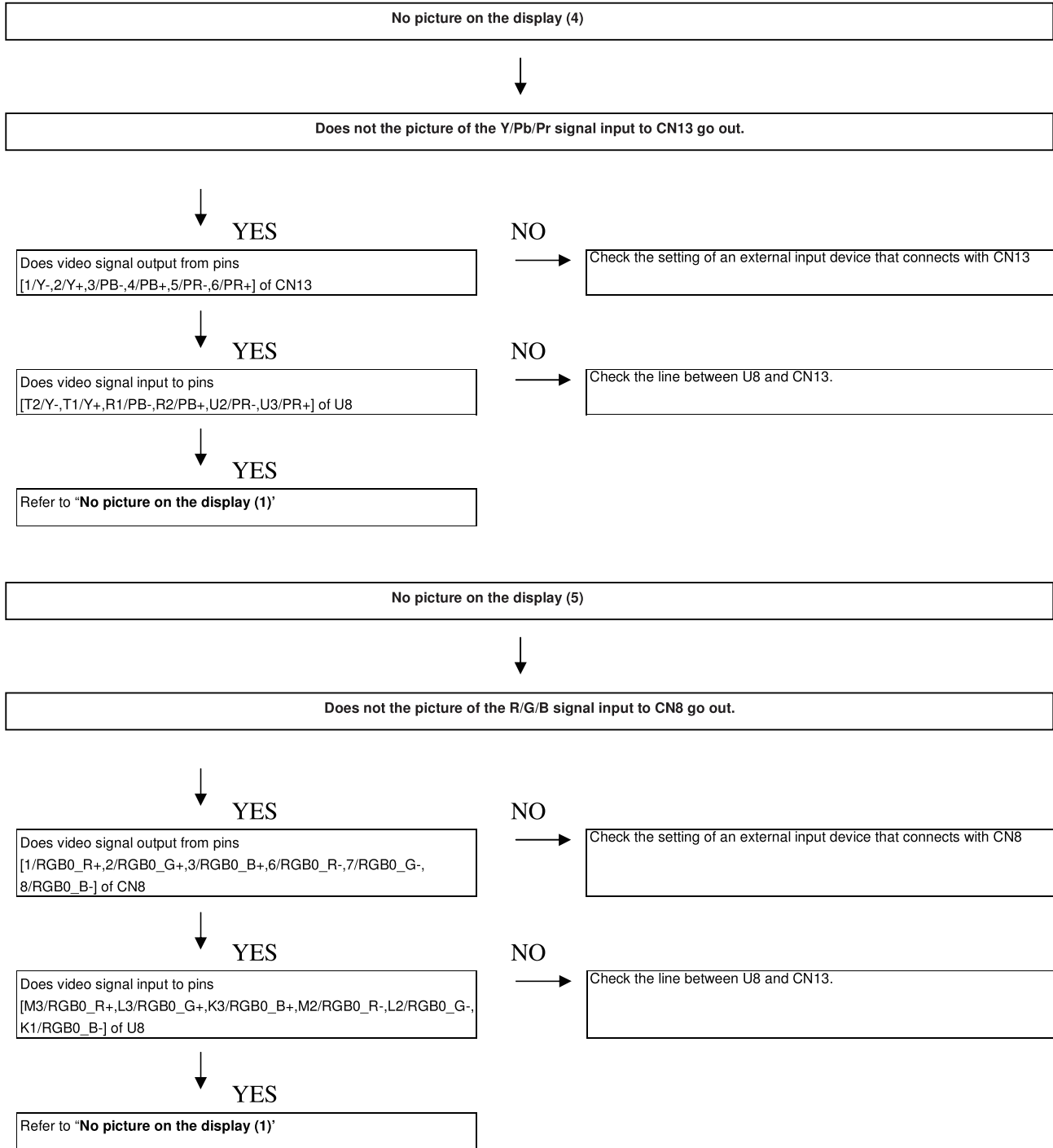


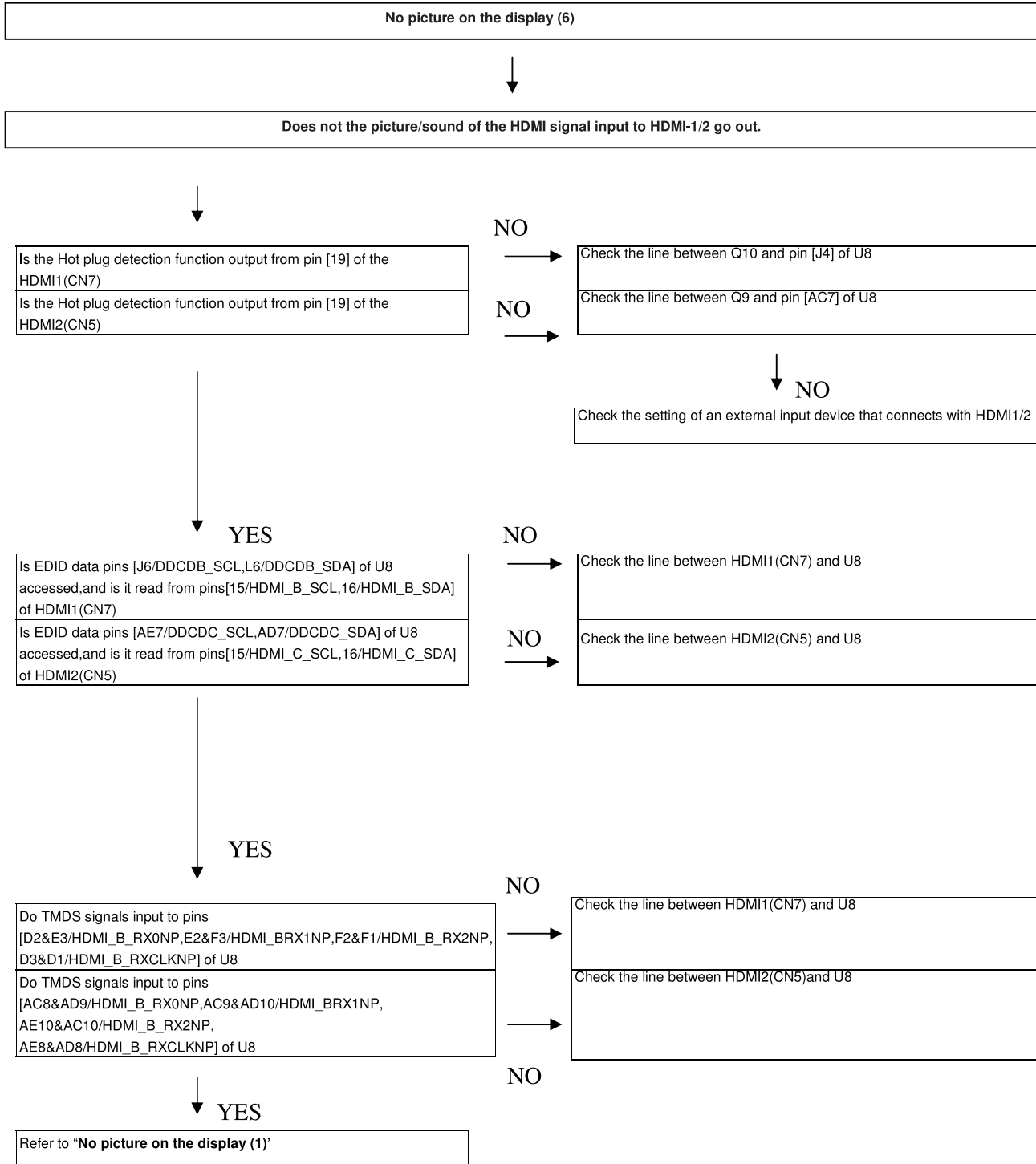






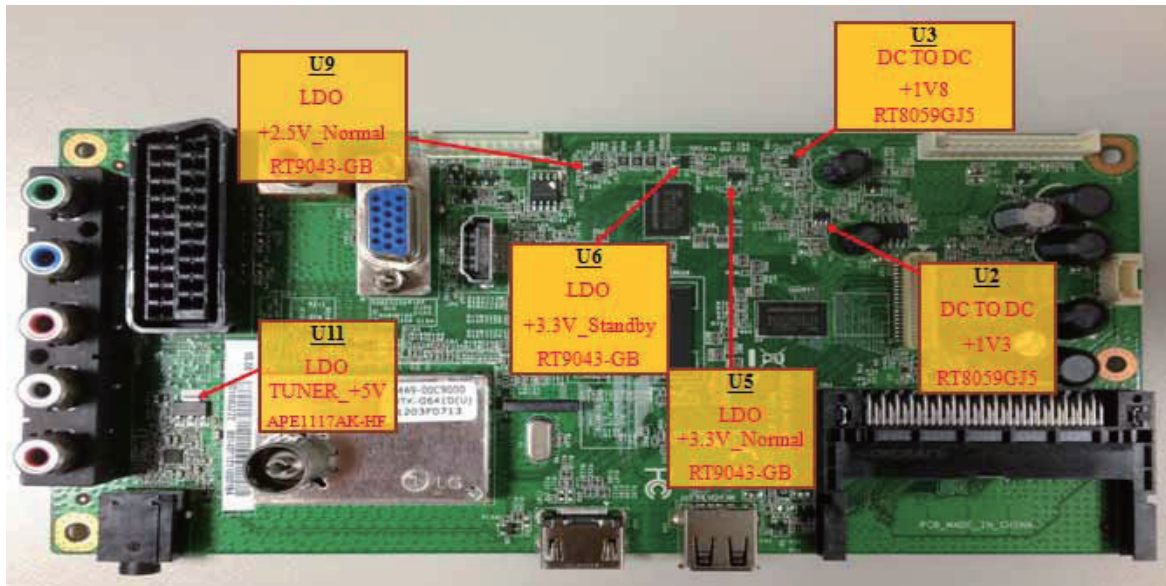
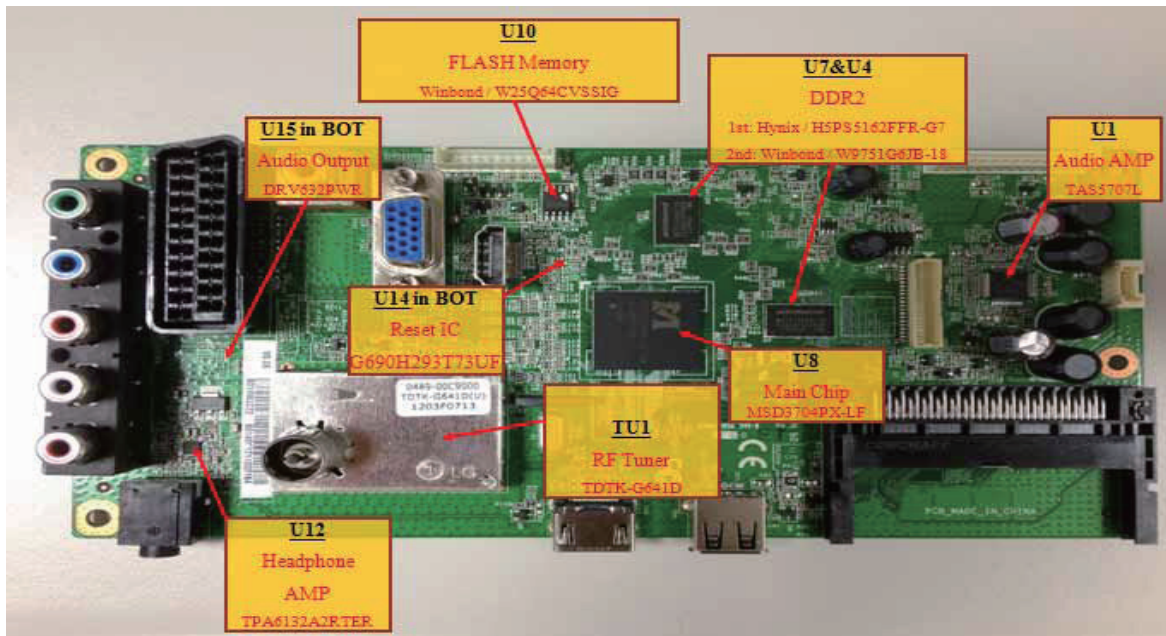






CHAPTER 8. Key Component on MB

[1] Key Component on MB

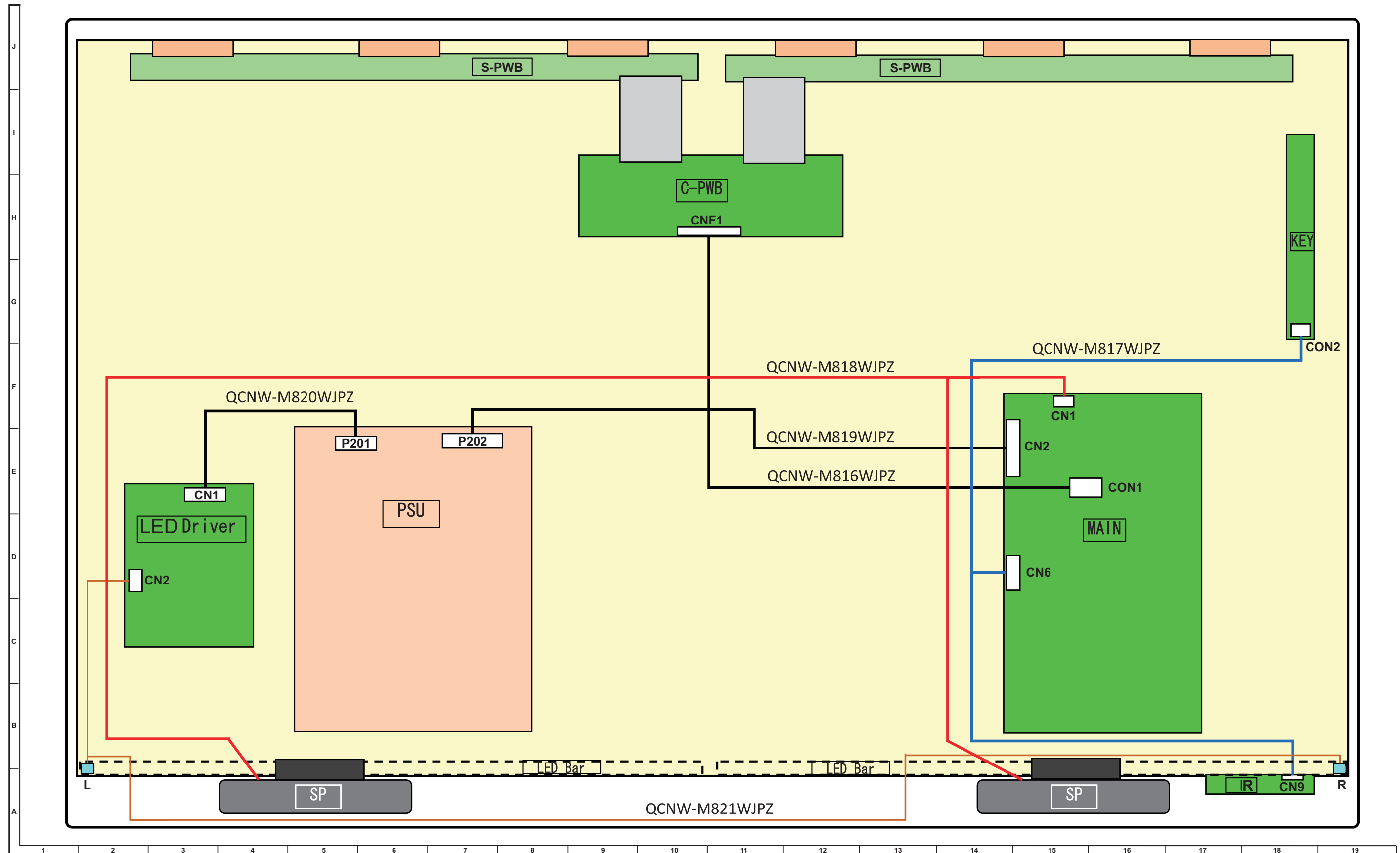


LC-32LE244E/144E

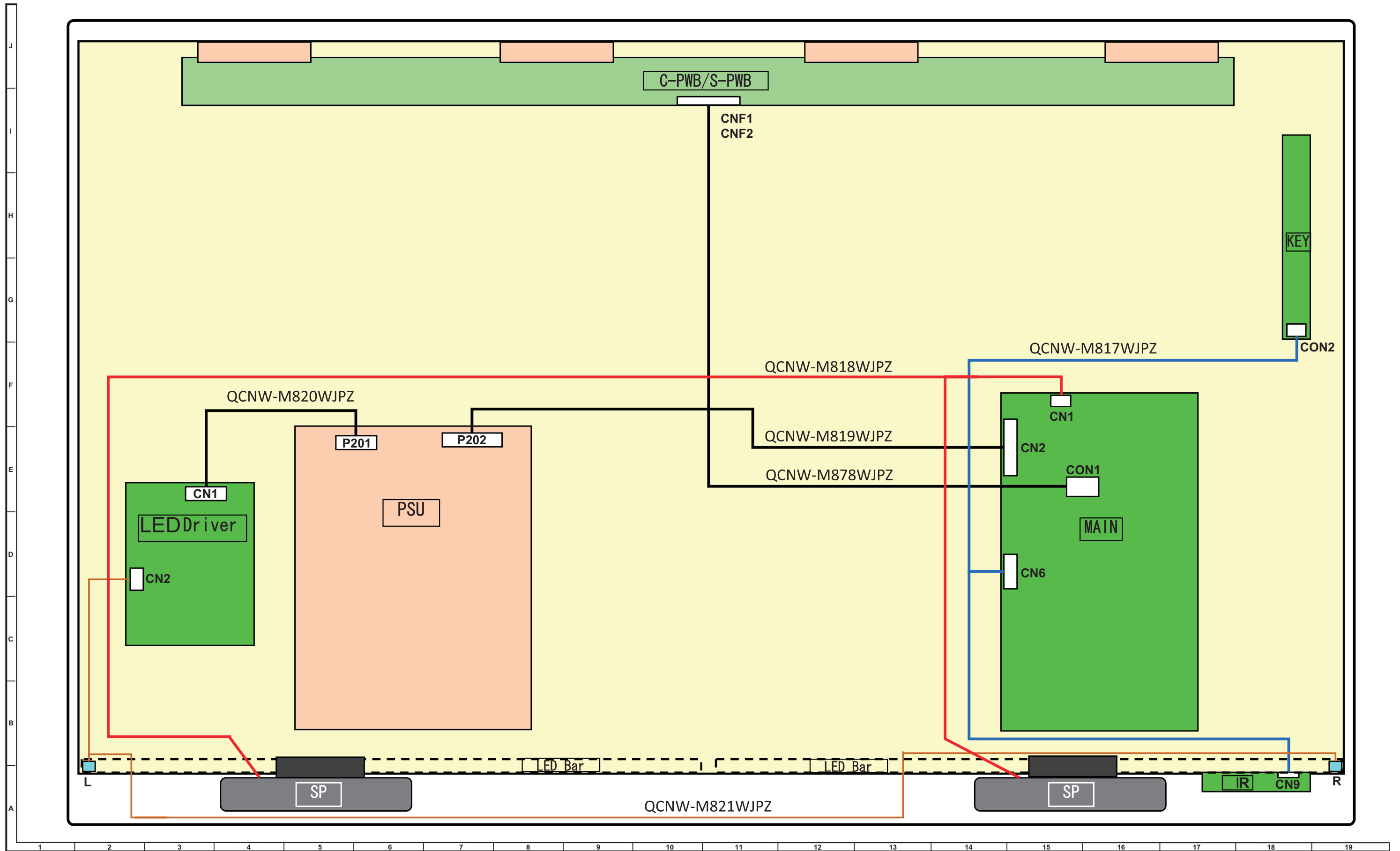
- MEMO -

CHAPTER 9. OVERLL WIRING/BLOCK DIAGRAM

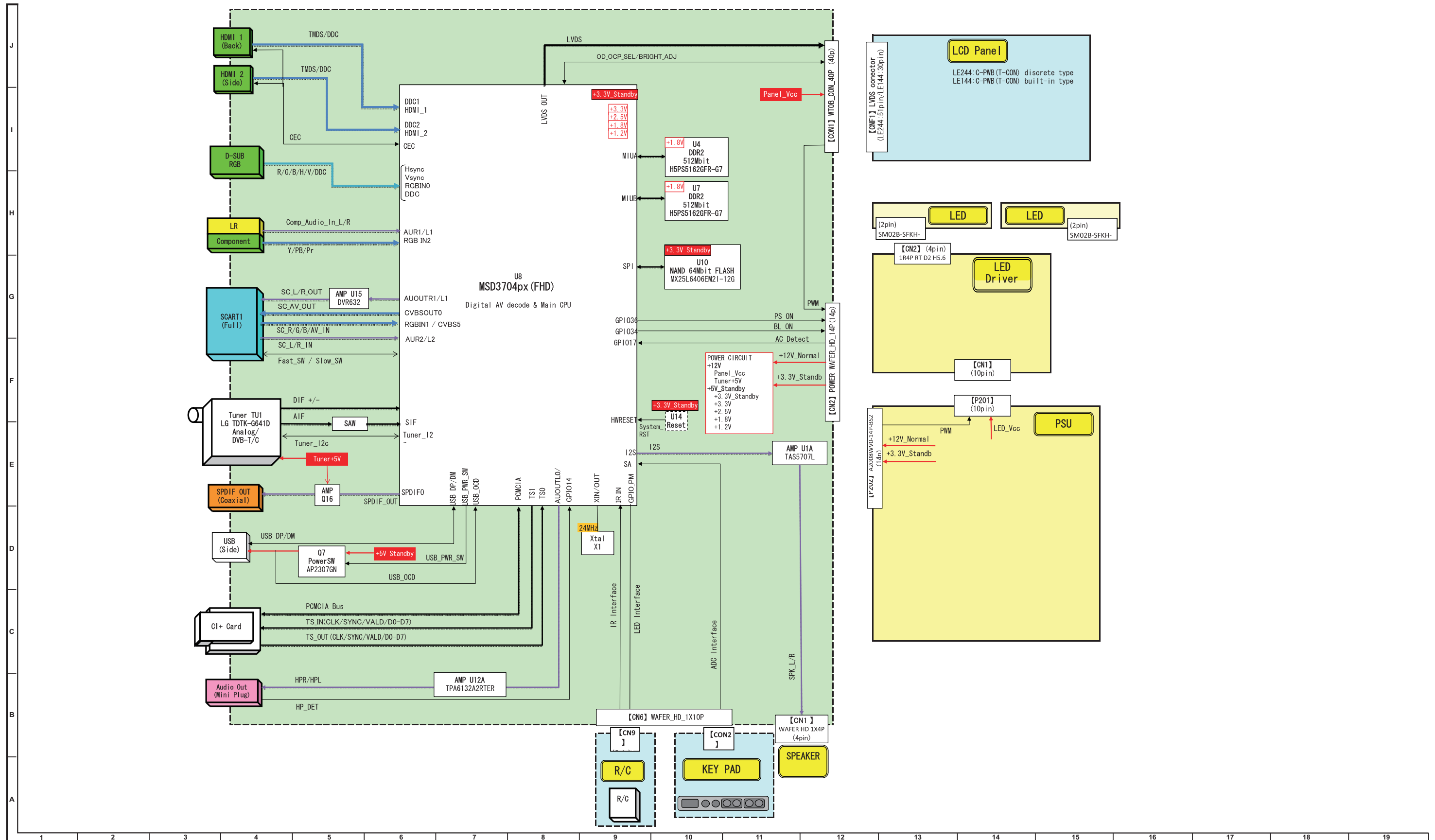
[1] OVERALL WIRING DIAGRAM (LC-32LE244E)



[2] OVERALL WIRING DIAGRAM (LC-32LE144E)

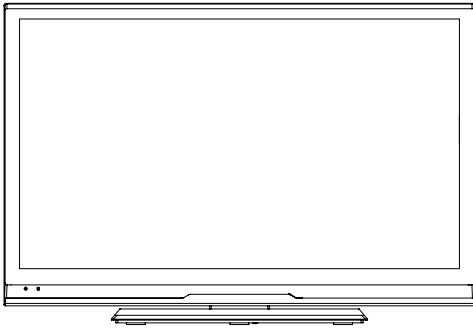


[3] SYSTEM BLOCK DIAGRAM



SHARP PARTS GUIDE

No. S62X332LE244E

**LCD COLOUR TELEVISION****LC-32LE244E****MODELS LC-32LE144E**

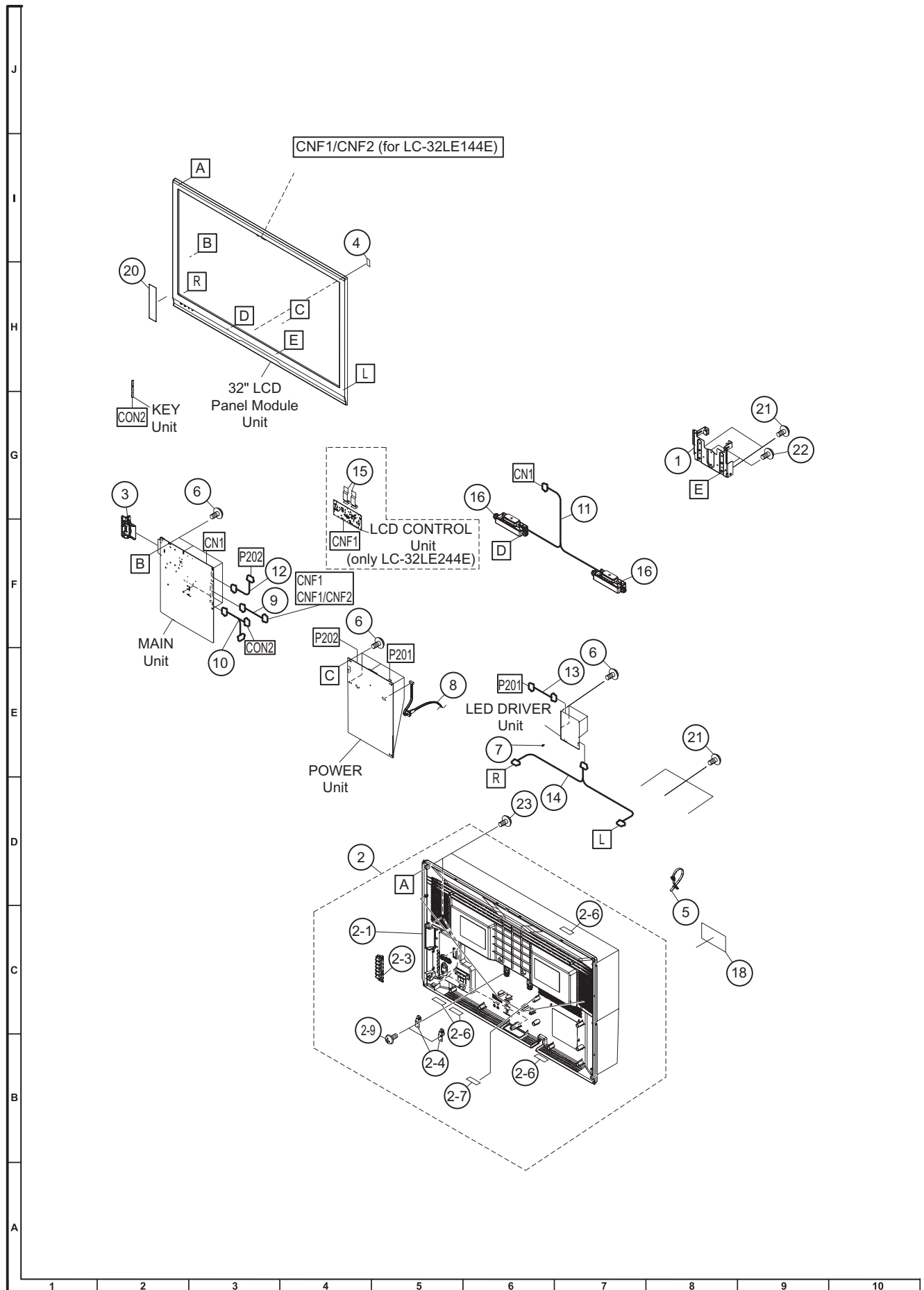
CONTENTS

- | | |
|-------------------------------------|---|
| [1] PRINTED WIRING BOARD ASSEMBLIES | [3] CABINET AND MECHANICAL PARTS |
| [2] LCD PANEL MODULE UNIT | [4] SUPPLIED ACCESSORIES/ PACKING PARTS |

Parts marked with "△" are important for maintaining the safety of the set. Be sure to replace these parts with specified ones for maintaining the safety and performance of the set.


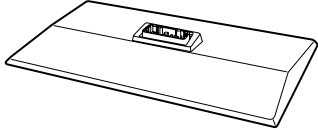
NO.	PARTS CODE	PRICE RANK	NEW MARK	PART DELIVERY	DESCRIPTION
[1] PRINTED WIRING BOARD ASSEMBLIES					
N	RUNTKB031WJZZ2		N	P	MAIN Unit
N	RUNTKB015WJZZ2	BH	N	P	POWER Unit
N	RUNTKB016WJZZ2	AZ	N	P	LED DRIVER Unit
N	RUNTKB017WJZZ2	AM	N	P	KEY Unit
N	RUNTKB018WJZZ2	AM	N	P	IR RECEIVER Unit
N	RUNTKB022WJQZ	BD	N	P	LCD CONTROL Unit (only for LC-32LE244E)
[2] LCD PANEL MODULE UNIT					
N	CLCDTA266FM01	DE	N	P	LCD PANEL MODULE Unit (for LC-32LE244E)
N	RLCDTA266WJZZ	CM	N	P	LCD PANEL Unit (for LC-32LE244E)
N	CLCDTA267FM01		N	P	LCD PANEL MODULE Unit (for LC-32LE144E)
N	RLCDTA267WJZZ		N	P	LCD PANEL Unit (for LC-32LE144E)

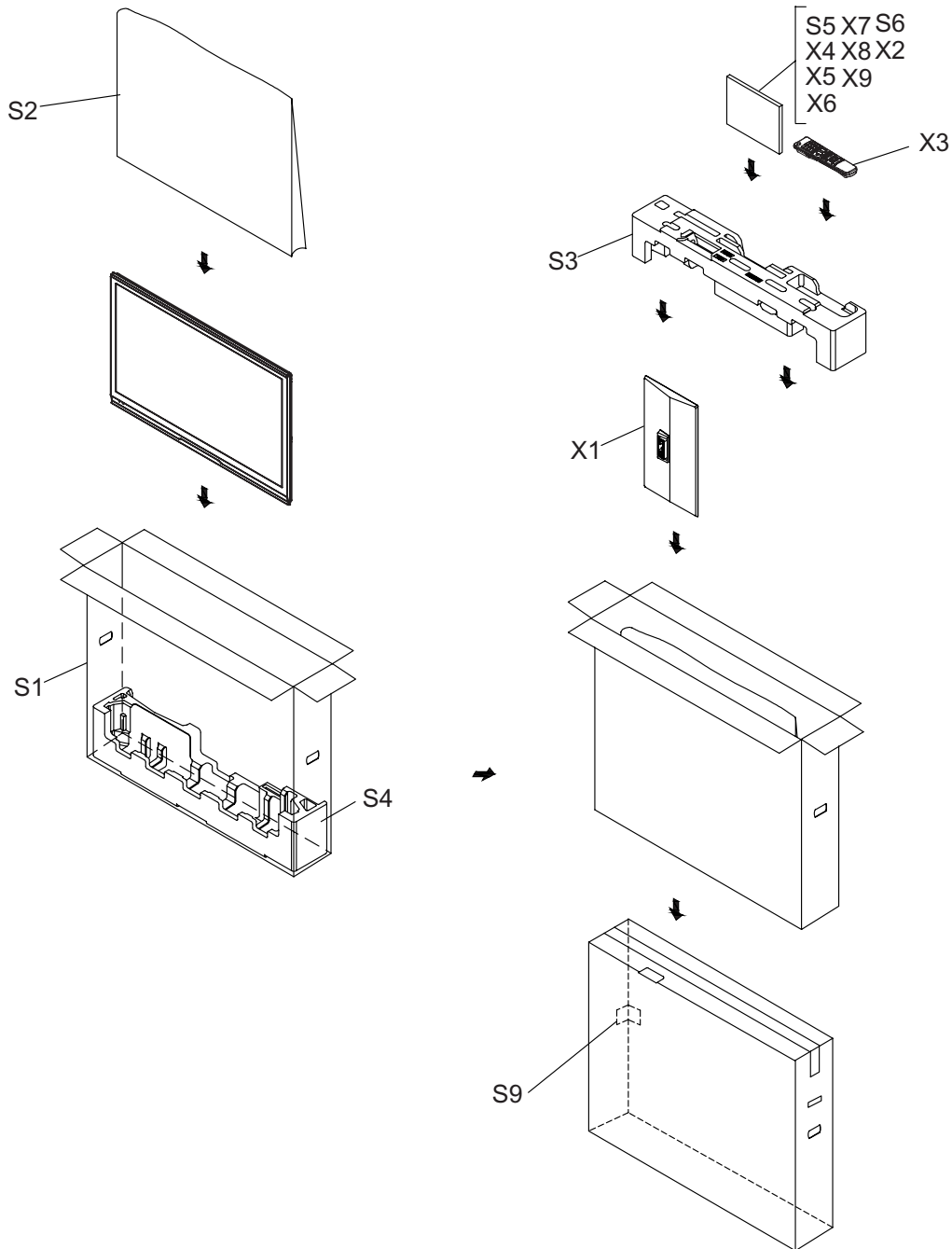
[3] CABINET AND MECHANICAL PARTS



NO.	PARTS CODE	PRICE RANK	NEW MARK	PART DELIVERY	DESCRIPTION	
[3] CABINET AND MECHANICAL PARTS						
1	LANGKD629WJ1W		N	P	Bottom Bracket	
2	CCABBC135WJ11		N	P	Rear Cabinet Ass'y	
2-1	GCABBC135WJ1A		N	P	Rear Cabinet	
2-3	JBTN-A976WJ1A			P	KEY Button	
2-4	LANGKD624WJ1W		N	P	VESA Angle, x2	
2-6	PSPAHC590WJZZ		N	P	Spacer, x4	
2-7	PSPAHC592WJZZ		N	P	Spacer, x2	
2-9	XEBS830P08000	AA		J	Screw, x2	
3	GCOVAE449WJ1A		N	P	Side Cover	
4	LHLDWA294WJUJ	AC		J	Wire Holder, x8	
5	LHLDWA318WJKZ	AD		J	Cable Clamp	
6	LX-BZA207WJF7	AA		J	Screw, x16	
7	PSPANAO50WJZZ		N	P	LEDD PWB Spacer	
△	8	QACCKA063WJPZ		N	P	AC CODE (except for U.K.)
△	8	QACCCA113WJPZ		N	P	AC CODE (for U.K.)
9	QCNW-M816WJPZ		N	P	Connecting Cord (LVDS) (for LC-32LE244E)	
9	QCNW-M878WJPZ		N	P	Connecting Cord (LVDS) (for LC-32LE144E)	
10	QCNW-M817WJPZ		N	P	Connecting Cord (MAIN-KEYIR)	
11	QCNW-M818WJPZ		N	P	Connecting Cord (MAIN-SP)	
12	QCNW-M819WJPZ		N	P	Connecting Cord (MAIN-PSU)	
13	QCNW-M820WJPZ		N	P	Connecting Cord (PSU-LEDDR)	
14	QCNW-M821WJPZ		N	P	Connecting Cord (LEDDR-LED)	
15	QCNW-M823WJZZ		N	P	FFC, x2 (for LC-32LE244E)	
16	RSP-ZA570WJZZ	AM	N	J	Speaker, x2	
18	TLABNC117WJZZ			P	Model Label	
20	TLABZD268WJZZ		N	P	Energy Label (Except Russia)	
21	XBPS830P06WS0	AA		J	Screw, x5	
22	XEBS730P10000	AA		J	Screw, x2	
23	XEBS830P08000	AA		J	Screw, x9	

[4] SUPPLIED ACCESSORIES/PACKING PARTS

<p>X3 Remote Control X 1</p> 	<p>X1 Stand unit</p> 	<p>X4 X5 X6 X7 OperationManual</p> <p>X8 X9 Guarantee Sheet</p>
<p>X2 Stand Screw Ass'y X2-1 Screw, x4 X2-2 "AAA" Size Battery, x2</p>		



NO.	PARTS CODE	PRICE RANK	NEW MARK	PART DELIVERY	DESCRIPTION
[4] SUPPLIED ACCESSORIES/PACKING PARTS					
X1	CDAi-A839WJ11		N	P	Stand Base Ass'y
X2	CSAKHA072WJ01		N	P	Stand Screw Ass'y
X2-1	Not Available	-		-	Screw, x4
X2-2	Not Available	-		-	"AAA" Size Battery, x2
X3	RRMCGB042WJSA2		N	P	Remote Control Unit
X4	TiNS-F523WJZZ		N	P	OperationManual (W-EU) (for Europe(SEEP))
X4	TiNS-F525WJZZ		N	P	OperationManual (E-EU) (for East Europe)
X4	TiNS-F526WJZZ		N	P	OperationManual (R) (for Russia)
X5	TiNS-F524WJZZ		N	P	OperationManual (N-EU) (for Europe(SEEP))
X6	TiNS-F527WJZZ		N	P	OperationManual (E) (Except Russia)
X7	TiNS-F567WJZZ		N	P	OperationManual (E-EU-2) (for East Europe)
X8	TGAN-A801WJN1			P	Guarantee Sheet (for U.K.)
X8	TGAN-B651WJZZ			P	Guarantee Sheet (for Russia)
X9	TGAN-A802WJN1			P	Guarantee Sheet (for U.K.)
S1	SPAKCG865WJZZ	-	N	-	Paking Case (for LC-32LE244E) (NOT REPLACEMENT ITEM)
S1	SPAKCG894WJZZ	-	N	-	Paking Case (for LC-32LE144E) (NOT REPLACEMENT ITEM)
S2	SPAKPB873WJZZ	-	N	-	Polyethylene Bag (NOT REPLACEMENT ITEM)
S3	SPAKXD718WJZZ	-	N	-	Pad Top (NOT REPLACEMENT ITEM)
S4	SPAKXD719WJZZ	-	N	-	Pad Bottom (NOT REPLACEMENT ITEM)
S5	SSAKAA111WJZZ	-		-	Polyethylene Bag (NOT REPLACEMENT ITEM)
S6	SSAKHA072WJ01	-	N	-	Packing Add. (Screw) (NOT REPLACEMENT ITEM)
S9	TLABME431WJZZ	-	N	-	Paper Label (NOT REPLACEMENT ITEM)

SHARP

COPYRIGHT © 2012 BY SHARP CORPORATION

ALL RIGHTS RESERVED.

No Part of this publication may be reproduced, stored in a retrieval system, or transmitted in any form or by any means, electronic, mechanical, photocopying, recording, or otherwise, without prior written permission of the publisher.