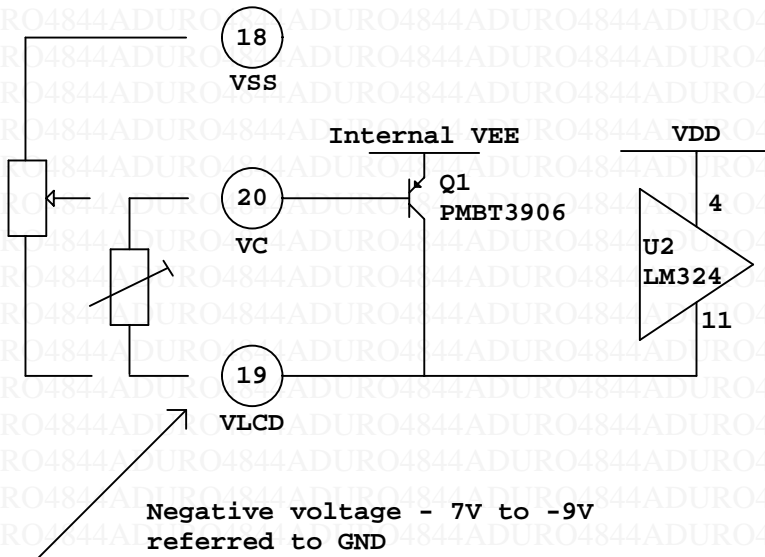


Notes: Dimensions in mm
 Active display area 85 x 32 mm
 Chipset HD61202 / HD61203
 CS1 CS2 CS3 see HD61202/3 datasheet
 VCC 3.3 to 5 Volt

Internal details



Connector pinout

H1			
CS2	(2)	(1)	CS1
R/W	(4)	(3)	CS3
EN	(6)	(5)	D/I
DB1	(8)	(7)	DB0
DB3	(10)	(9)	DB2
DB5	(12)	(11)	DB4
DB7	(14)	(13)	DB6
N/C	(16)	(15)	RST
VSS	(18)	(17)	VDD
VC	(20)	(19)	VLCD

- (CS1) connected to pin CS1 of U3
- (CS2) connected to pin CS2 of U4
- (CS3) connected to pin CS3 of U3 and U4

- U3 (CS1) - H1 Pin 1
- U3 (CS2) - VSS
- U3 (CS3) - H1 Pin 3
- U4 (CS1) - VDD
- U4 (CS2) - H1 Pin 2
- U4 (CS3) - H1 Pin 3