



FEATURES:

- AC Input 90~305Vac
- Power Factor: >0.98@115Vac / >0.95@230Vac
- Protection: SCP / OVP / OTP / OCP
- High Operating Ambient Temp.: -30°C~+60°C
- Surge Protection: L-N 2KV, L/N-FG 4KV
- Safety: UL / CB / PSE
- EMI: CE / FCC
- Comply with Indoor/Outdoor Waterproof (IP 67)
- Warranty: 5 years (refer to warranty policy)
- RoHS Compliant

PRODUCT SPECIFICATION						
MODEL	DC OUTPUT POWER(W)	DC OUTPUT VOLTAGE(V)	OUTPUT CURRENT(A)	OUTPUT VOLTAGE TOLERANCE	EFFICIENCY	O/P NOISE(P-P,V)
LCVH-150U240-00G	150	24	6.3	±5%	90%	0.5
LCVH-150U480-00G	150	48	3.2	±5%	91%	0.5

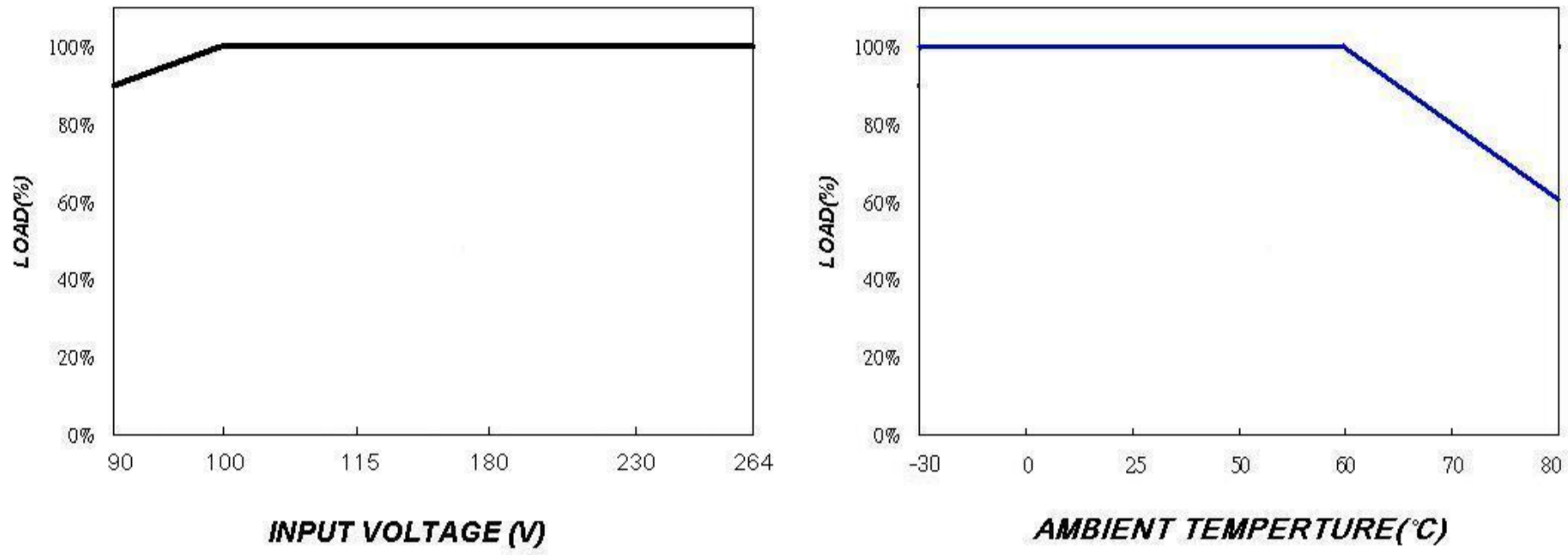
ELECTRICAL SPECIFICATION	
INPUT VOLTAGE RANGE	90-305Vac, 127-431Vdc, Normal: 100-277Vac
INPUT FREQUENCY	Range: 47-63Hz, Normal: 50-60Hz
ACTIVE POWER FACTOR	>0.98@115Vac / >0.95@230Vac at Full Load and Rated Output Voltage
THD	<20%@277Vac full load
TURN ON DELAY TIME	<1S at Full Load 120-277Vac
AC CURRENT	2.4 A / 115VAC
INRUSH CURRENT (Max)	Cold start 65A@230Vac
LEAKAGE CURRENT	<0.45mA/277VAC
SHORT CIRCUIT PROTECTION	short circuit protection will restart automatically after the fault condition is removed
OVER VOLTAGE PROTECTION	The over temperature protection is latched shutdown mode.
OVER TEMP. PROTECTION	
OVER CURRENT PROTECTION	120%~160% rated output power ; Hiccup mode
OPERATING TEMP.	-30°C~+60°C
STORAGE TEMP.	-40°C~+80°C
RELATIVE HUMIDITY	10% to +90%, non-cond.
SAFETY	UL60950-1 / CB 61347-2-13 / PSE
EMI	EN 55015/ FCC PART 15
WITHSTAND VOLTAGE	I/P-O/P : 3KVAC, O/P-Grnd : 1.5KVAC, I/P-Grnd : 1.5KVAC
ISOLATION RESISTANCE	I/P-O/P, I/P-FG,O/P-FG :10M Ohms / 500VDC / 25°C / 70% RH
DIMENSION (L*W*H)	208.4 * 72 * 38.55 mm 【8.2 * 2.83 * 1.52 inch】

- (1) All parameters not specially mentioned are measured 230VAC input.
 (2) All specifications Typical @25°C, unless otherwise noted, at normal line and load.
 (3) Ripple and Noise measured directly at pins/terminals at nom. load, 0.1uF bypass and 47uF electrolytic, pk-pk @20MHz bandwidth.
 (4) Specified for free-air convection cooling.
 (5) Minimum load is NOT required for proper operation .
 (6) 100% Production Tested.

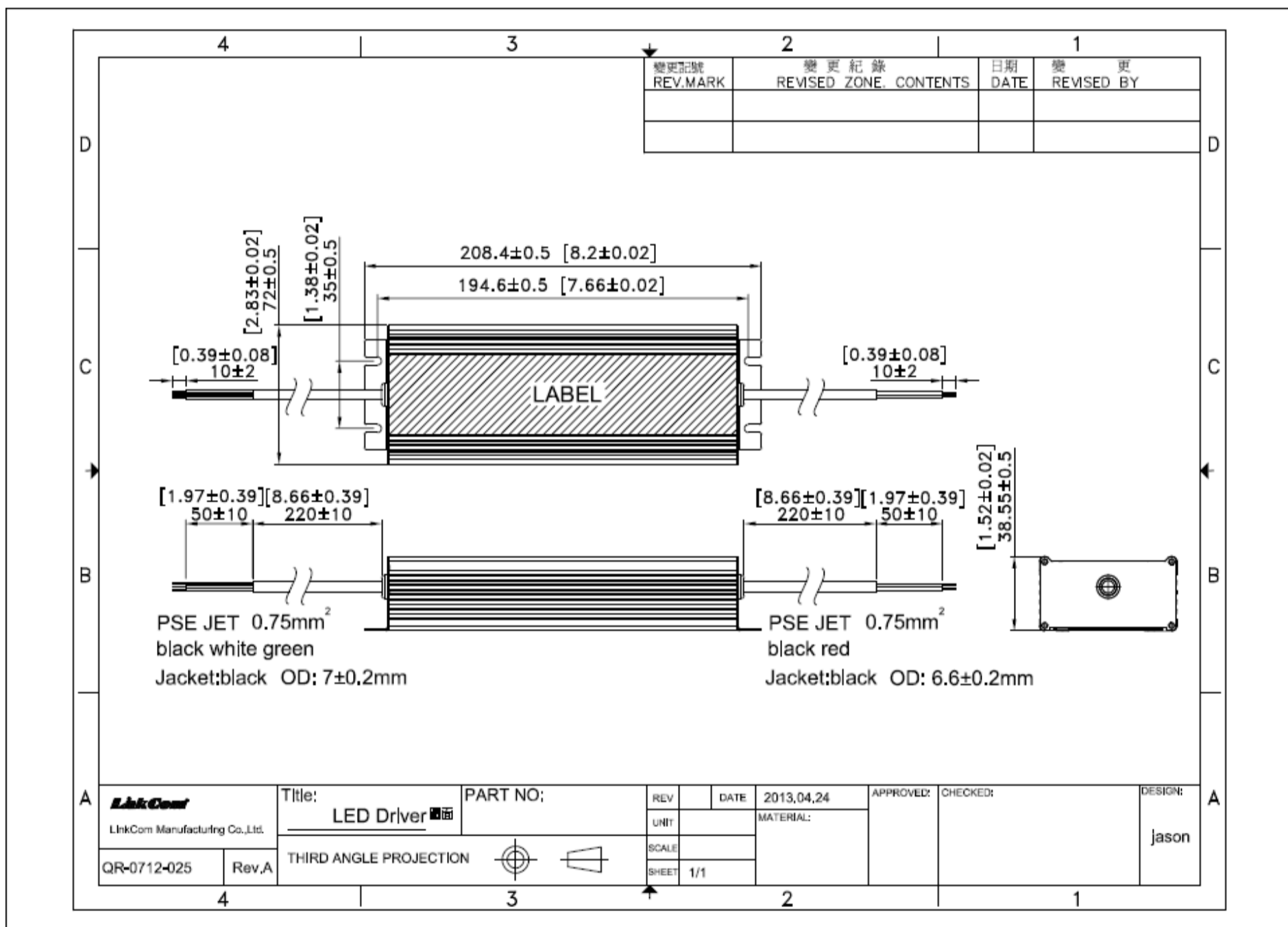
* REFERENCE: www.linkcom.com.tw

* Please contact sales@linkcom.com.tw, sales@linkcomusa.com for more information

DERATING CURVE

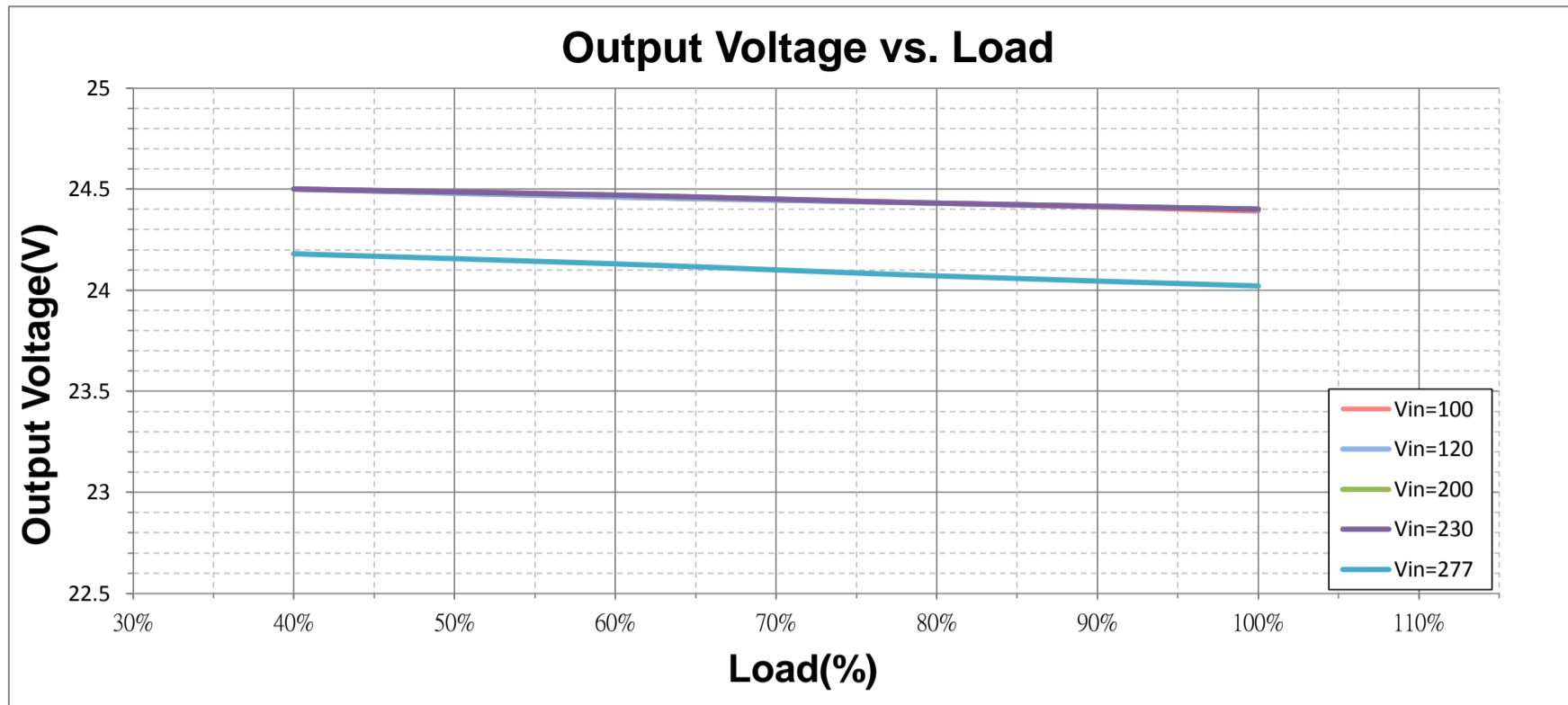


DIMENSIONS

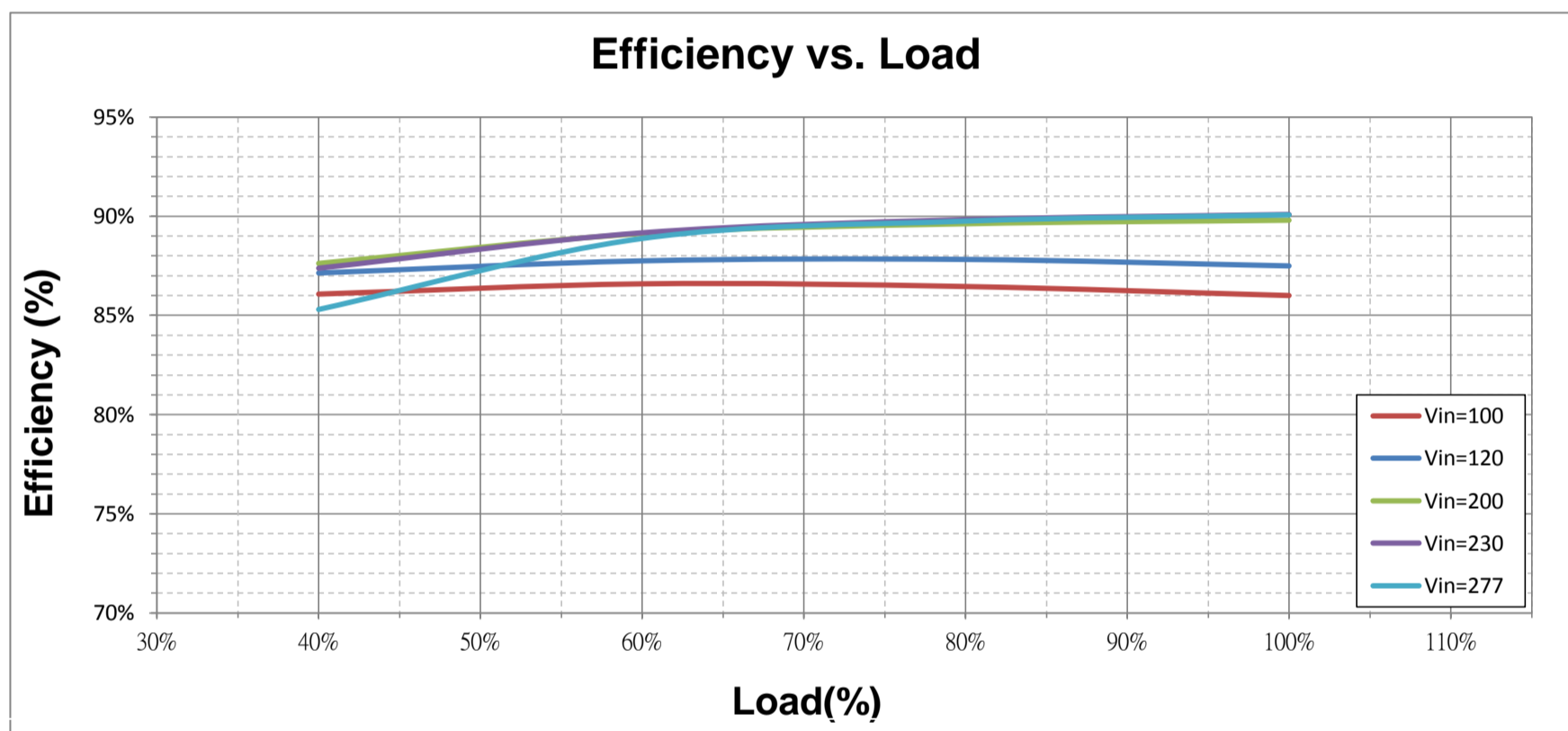


* REFERENCE: www.linkcom.com.tw

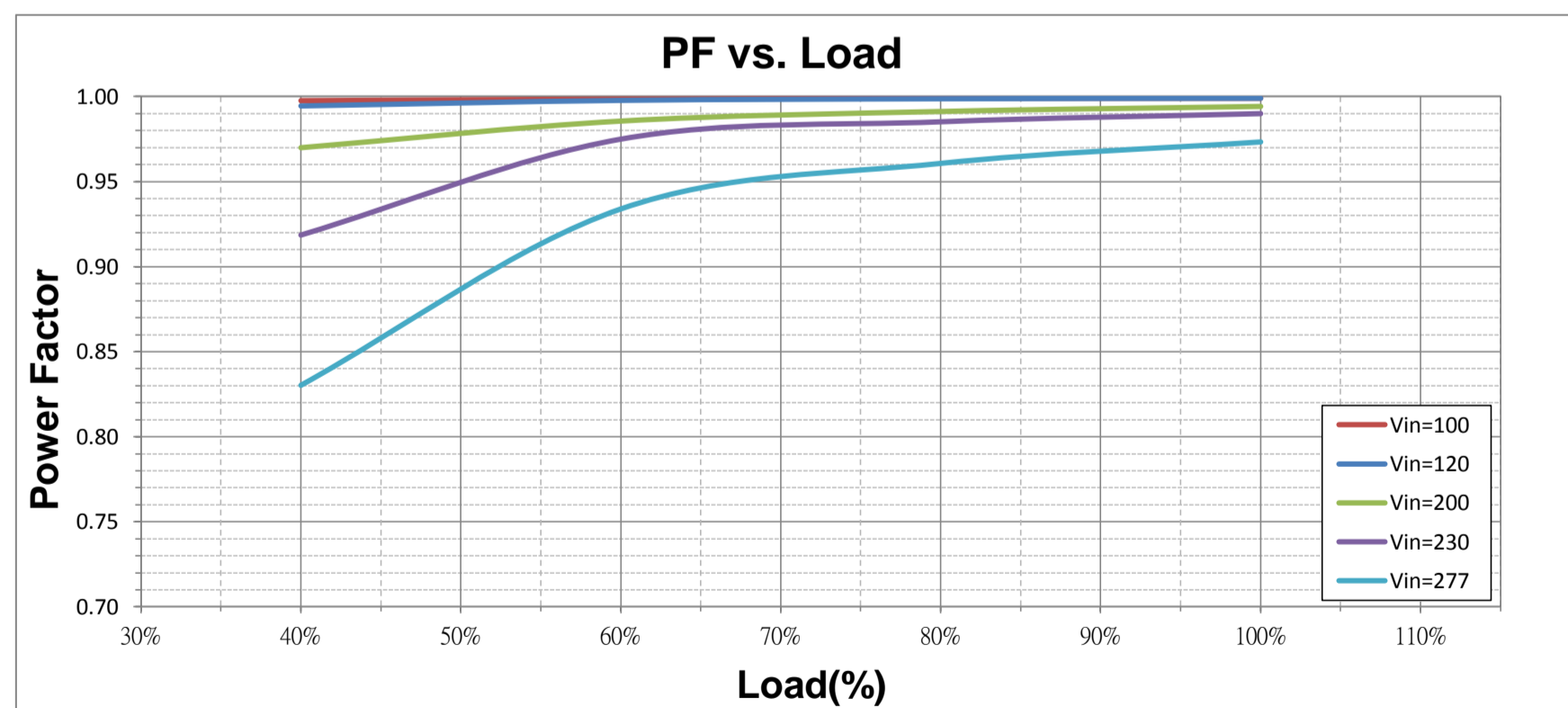
150-LCVH Series
Output Voltage vs. Load (LCVH-150P240-P0)



Efficiency vs. Load (LCVH-150P240-P0)



PF vs. Load (LCVH-150P240-P0)



THD vs. Load (LCVH-150P240-P0)

