

1.53 ÷ 1.57  
μm

CW output power  
> 0.8 mW

LFO-18-ip

### Description:

**LFO-18-ip** – is a series of optical modules based on Mitsubishi 1550nm MQW InGaAsP/InP Fabry-Perot laser diode and coupled with singlemode optical fiber. Hermetically sealed modules are performed in standard coaxial package with built-in InGaAs monitor photodiode and collimating ball lens. The modules operate in wide temperature range, have stable output power and more than  $5 \cdot 10^5$  hours of lifetime.

**LFO-18-ip** – are the best light sources for digital (up to 622Mb/s) fiber-optic communication lines, optical testers, systems of optical synchronization and other applications.



### Absolute maximum ratings:

#### Laser diode

Max. output power (mW)	1.2
Reverse voltage (V)	2.0

#### Monitor photodiode

Reverse voltage (V)	10
Forward current (mA)	2.0

#### Environment

Operating temperature range (°C)	-40..+55
Storage temperature range (°C)	-40..+70

#### Assembly

Pin soldering temperature (°C)	200
Pin soldering time (sec)	3.0

### Optical and electrical characteristics (T=25°C):

Characteristics	Symbol	Test condition	Min	Typ.	Max	Units
<b>Laser diode</b>						
Output power from fiber end	$P_{OP}$	$I_{OP}$		0.8		mW
Wavelength	$\lambda_{OP}$	$P_{OP}$	1530	1550	1570	nm
Spectral width (FWHM)	$\Delta\lambda$	$P_{OP}$		1.0	2.5	nm
Threshold current	$I_{TH}$	CW	5.0	10	15	mA
Forward current	$I_F$	$P_{OP}$	25	35	45	mA
Forward voltage	$U_{OP}$	$P_{OP}$		1.1	1.5	V
Rise time/fall time	$\tau_R/\tau_F$	$P_{OP}$		0.3	0.7	ns
<b>Monitor photodiode</b>						
Monitor current	$I_{PD}$	$U_{REV}=5.0\text{ V}, P_{OP}$	100	500		μA
Dark current	$I_D$	$U_{REV}=5.0\text{ V}$		0.01	0.1	μA
Capacitance	$C_{PD}$	$U_{REV}=5.0\text{ V}, f=1\text{ MHz}$		10	20	pF
<b>Optical fiber</b>						
Fiber core/cladding diameter	$D_C/D_{CL}$			9/125		μm
Fiber length	L			400..1500		mm
Optical connector type				«FC»		

**ROITHNER LASERTECHNIK**

A-1040 VIENNA, SCHOENBRUNNER STRASSE 7, AUSTRIA

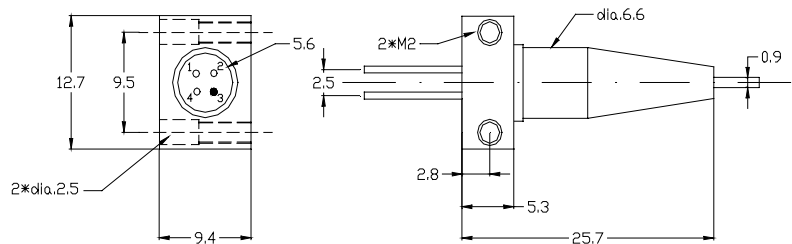
TEL: +43 -1- 586 52 43-0 FAX: +43 -1- 586 52 43-44

e-mail: office@roithner-laser.com http://www.roithner-laser.com

# LFO-18-ip

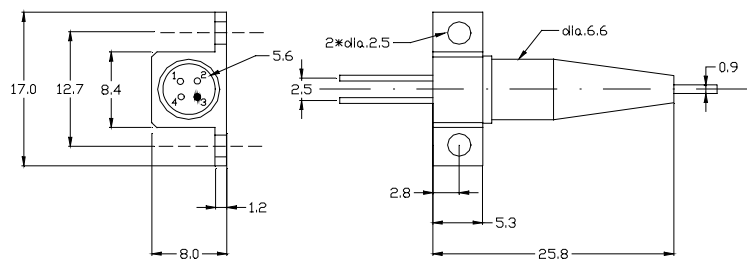
## Package specifications (type «A»):

Pin	Function
1	PD cathode (+)
2	PD anode (-)
3	LD anode (+), case
4	LD cathode (-)



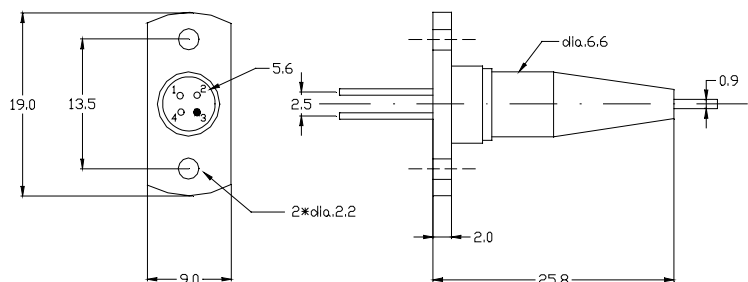
## Package specifications (type «B»):

Pin	Function
1	PD cathode (+)
2	PD anode (-)
3	LD anode (+), case
4	LD cathode (-)

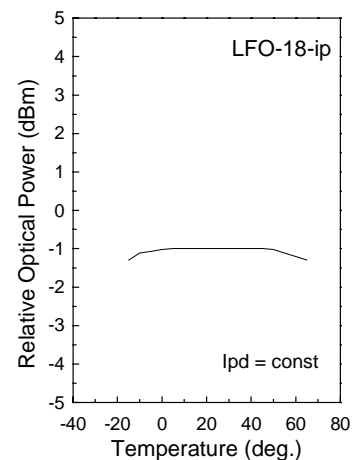
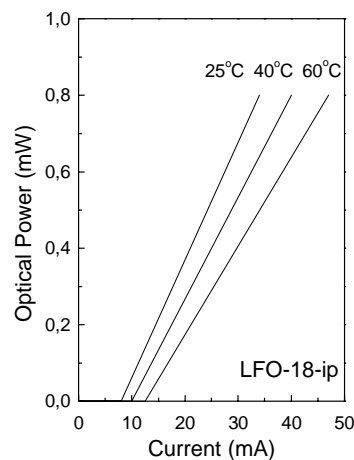
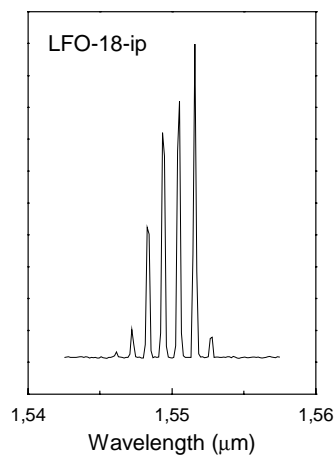


## Package specifications (type «C»):

Pin	Function
1	PD cathode (+)
2	PD anode (-)
3	LD anode (+), case
4	LD cathode (-)



## Typical optical and electrical characteristics (T=25°C):



**ROITHNER LASERTECHNIK**

A-1040 VIENNA, SCHOENBRUNNER STRASSE 7, AUSTRIA

TEL: +43 -1- 586 52 43-0 FAX: +43 -1- 586 52 43-44

e-mail: office@roithner-laser.com http://www.roithner-laser.com