

Ceramic Low Pass Filter

DC to 1350 MHz

NEW!
LFTC-1350

Maximum Ratings

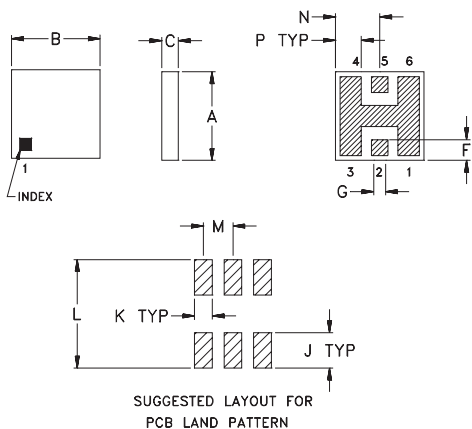
Operating Temperature	-55°C to 100°C
Storage Temperature	-55°C to 125°C

Pin Connections

RF IN	2**
RF OUT	5**
GROUND	1,3,4,6

** RF IN & RF OUT can be interchanged

Outline Drawing

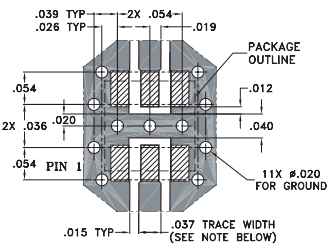


TOLERANCE UNLESS OTHERWISE STATED
2 PLACES DECIMAL: ±.01
3 PLACES DECIMAL: ±.005

Outline Dimensions (inch)

A	B	C	D	E	F	G	H	J	K	L	M	N	P	wt.
.150	.150	.028	—	—	.035	.028	—	.060	.030	.184	.050	.075	.044	grams
3.81	3.81	0.71	—	—	0.89	0.71	—	1.52	0.76	4.67	1.27	1.91	1.12	0.15

Demo Board MCL P/N: TB-233 Suggested PCB Layout (PL-112)



NOTE: TRACE WIDTH IS SHOWN FOR ROGERS RO4350 WITH DIELECTRIC THICKNESS .020 ± .0015".
COPPER: 1/2 OZ. EACH SIDE.
FOR OTHER MATERIALS TRACE WIDTH MAY NEED TO BE MODIFIED.

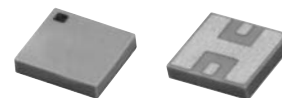
■ DENOTES PCB COPPER LAYOUT
▨ DENOTES COPPER LAND PATTERN FREE OF SOLDERMASK

Features

- miniature size, 0.15"X0.15"X.028"
- low profile, .028" height
- high power handling, 15W
- 7 sections

Applications

- harmonic rejection
- internal rejection
- receivers & transmitters



BLUE CELL™

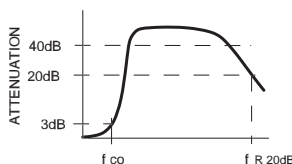
CASE STYLE: FR933
PRICE: \$3.75 ea. QTY (10-49)

Low Pass Filter Electrical Specifications (T_{AMB}=25°C)

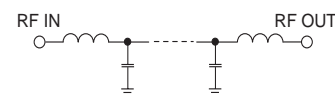
MODEL NO.	PASSBAND (MHz) (loss < 1 dB) Typ.	f _{co} , MHz Nom. (loss 3 dB) Typ.	STOP BAND (MHz)			VSWR (:1) Passband Typ.	POWER INPUT* (W)	MARKING	NO. OF SECTIONS
			(> 20 dB)	(loss > 40 dB)	f _{r20dB} Typ.				
LFTC-1350	DC-1350	1550	2100	2700-4000	7000	1.2	15	LF1	7

* Derate linearly to 7W at 100°C ambient

typical frequency response



schematic



Typical Performance Data at 25°C

Frequency (MHz)	Insertion Loss (dB)	VSWR (:1)
1.00	0.06	1.01
1000.00	0.57	1.07
1350.00	0.91	1.25
1550.00	2.76	2.96
1700.00	8.24	10.25
2100.00	23.80	41.48
2700.00	43.89	58.41
4000.00	43.19	62.68
7000.00	23.87	14.62
9000.00	23.66	2.77

