

# Ceramic Low Pass Filter

**NEW!**  
**LFTC-1700**

DC to 1700 MHz

## Maximum Ratings

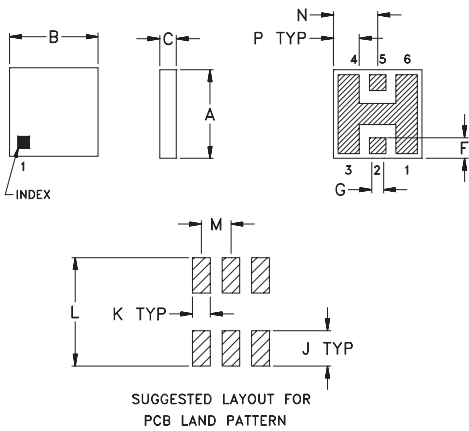
Operating Temperature	-55°C to 100°C
Storage Temperature	-55°C to 125°C

## Pin Connections

RF IN	2**
RF OUT	5**
GROUND	1,3,4,6

\*\* RF IN & RF OUT can be interchanged

## Outline Drawing

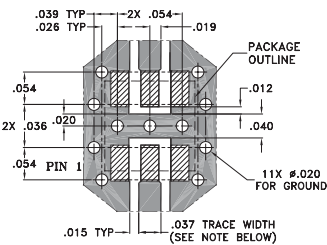


TOLERANCE UNLESS OTHERWISE STATED  
2 PLACES DECIMAL: ±.01  
3 PLACES DECIMAL: ±.005

## Outline Dimensions (inch)

A	B	C	D	E	F	G	
.150	.150	.028	—	—	.035	.028	
3.81	3.81	0.71	—	—	0.89	0.71	
H	J	K	L	M	N	P	wt.
—	.060	.030	.184	.050	.075	.044	grams
—	1.52	0.76	4.67	1.27	1.91	1.12	0.15

## Demo Board MCL P/N: TB-233 Suggested PCB Layout (PL-112)



NOTE: TRACE WIDTH IS SHOWN FOR ROGERS RO4350 WITH DIELECTRIC THICKNESS .020" ± .0015". COPPER: 1/2 OZ. EACH SIDE. FOR OTHER MATERIALS TRACE WIDTH MAY NEED TO BE MODIFIED.

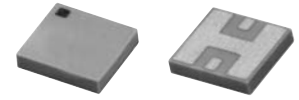
■ DENOTES PCB COPPER LAYOUT  
▨ DENOTES COPPER LAND PATTERN FREE OF SOLDERMASK

## Features

- miniature size, 0.15"X0.15"X.028"
- low profile, .028" height
- high power handling, 14W

## Applications

- harmonic rejection
- internal rejection
- receivers & transmitters



**BLUE CELL™**

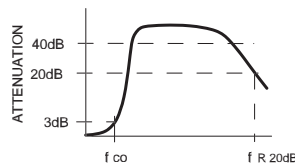
CASE STYLE: FR933  
PRICE: \$3.75 ea. QTY (10-49)

## Low Pass Filter Electrical Specifications (T<sub>AMB</sub>=25°C)

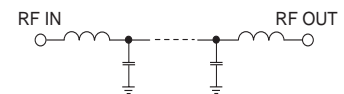
MODEL NO.	PASSBAND (MHz) (loss < 1 dB) Typ.	f <sub>co</sub> , MHz Nom. (loss 3 dB) Typ.	STOP BAND (MHz)			VSWR (:1) Passband Typ.	POWER INPUT* (W)	MARKING	NO. OF SECTIONS
			( > 20 dB)	( loss > 40 dB)	f <sub>R20dB</sub> Typ.				
LFTC-1700	DC-1700	1980	2700	3300-3880	7200	1.2	14	LF4	7

\* Derate linearly to 6W at 100°C ambient

## typical frequency response

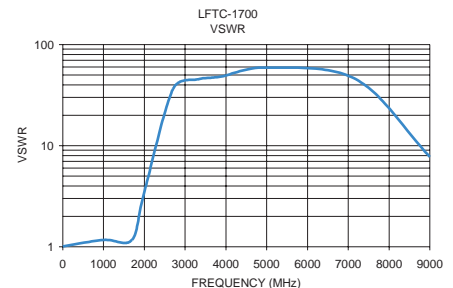
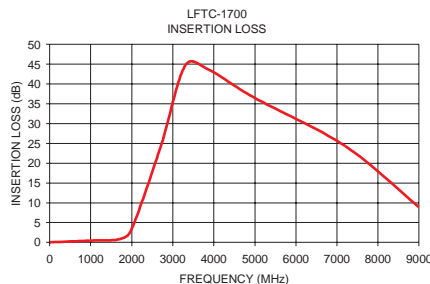


## schematic



## Typical Performance Data at 25°C

Frequency (MHz)	Insertion Loss (dB)	VSWR (:1)
1.00	0.04	1.01
1000.00	0.43	1.17
1700.00	0.82	1.17
1980.00	2.94	3.21
2700.00	24.07	36.29
3300.00	44.62	45.32
3880.00	43.57	48.21
5000.00	36.48	59.14
7200.00	24.33	45.18
9000.00	8.94	7.75



**Mini-Circuits®**

Distribution Centers NORTH AMERICA 800-654-7949 • 417-335-5935 • Fax 417-335-5945 • EUROPE 44-1252-832600 • Fax 44-1252-837010

ISO 9001 CERTIFIED

INTERNET <http://www.minicircuits.com>

P.O. Box 350166, Brooklyn, New York 11235-0003 (718) 934-4500 Fax (718) 332-4661

REV. G  
M88950  
LFTC-1700  
EDB-020539  
AD/YB/CP  
030918