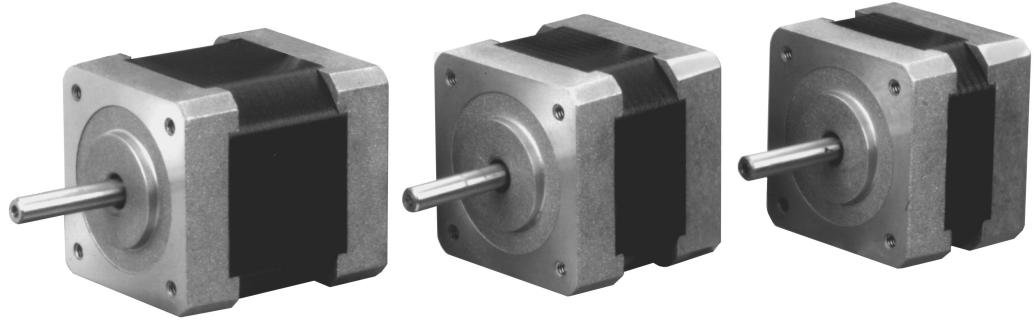


SIZE
17
1.65"
SQ

Rotary Hybrid Stepping Motor 1.8°

High Torque



EADmotors Size 17 hybrid DC stepping motors are precision bi-directional devices with position accuracy of $\pm 6\%$ non-cumulative.

Motors are totally enclosed with permanently lubricated ball bearings.

Standard motors have 4 or 6 leads. Motors with 5 or 8 leads can be furnished to meet existing applications.

EADmotors specializes in meeting the individual requirements of each application and offers engineering assistance for your design requirements.

Electrical Ratings

Model Number	Number of Leads	Unipolar Connection					Bipolar Connection					Holding Torque (oz-in)	Rotor Inertia (oz-in-sec ²)	Weight (ounces)
		Phase Voltage (VDC)	Phase Current (amps)	Phase Resistance (ohms)	Phase Inductance (mH)	Holding Torque (oz-in)	Phase Voltage (VDC)	Phase Current (amps)	Phase Resistance (ohms)	Phase Inductance (mH)				
LH1713-10	6	4.00	0.95	4.20	2.5	22.2	5.60	0.67	8.40	10.0	29.0	0.00053	7.0	
LH1713-11	6	6.00	0.62	9.60	5.8	22.2	8.50	0.44	19.2	23.2	29.0			
LH1713-12	6	12.00	0.31	38.5	23	22.2	17.00	0.22	77	92	29.0			
LH1713-14	6	9.60	0.40	24.0	15.0	22.2	13.6	0.28	48.0	60	29.0			
LH1713-M100	4						3.8	1.00	3.8	4.8	29.0			
LH1713-M150	4						2.8	1.5	1.90	2.3	29.0			
LH1713-M200	4						1.9	2.0	0.95	1.2	29.0			
LH1715-10	6	4.00	1.2	3.3	3.2	36.1	5.60	0.85	6.60	12.8	47.0	0.00081	9.0	
LH1715-11	6	6.00	0.80	7.50	7.0	36.1	8.50	0.57	15.0	28	47.0			
LH1715-12	6	12.00	0.40	30.0	28	36.1	17.00	0.28	60.0	112	47.0			
LH1715-13	6	24.0	0.20	120	112	36.1	33.9	0.14	240	448	47.0			
LH1715-M100	4						4.7	1.00	4.7	9.1	47.0			
LH1715-M150	4						3.6	1.5	2.4	4.7	47.0			
LH1715-M200	4						2.4	2.0	1.2	2.3	47.0			
LH1719-10	6	4.00	1.20	3.30	2.8	44.4	5.7	0.85	6.60	11.2	58.0	0.00106	11.8	
LH1719-11	6	6.00	0.80	7.50	7.0	44.4	8.50	0.57	15.0	28	58.0			
LH1719-12	6	12.00	0.40	30.0	28	44.4	17.00	0.28	60.0	112	58.0			
LH1719-13	6	24.0	0.20	120	112	44.4	33.9	0.14	240	448	58.0			
LH1719-M100	4						5.2	1.00	5.2	8.4	58.0			
LH1719-M150	4						3.7	1.5	2.5	4.3	58.0			
LH1719-M200	4						2.4	2.0	1.2	2.2	58.0			

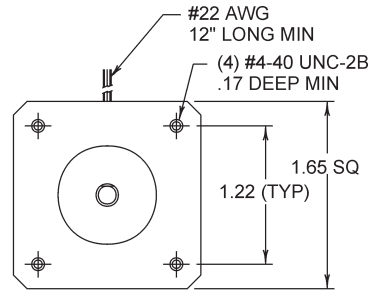
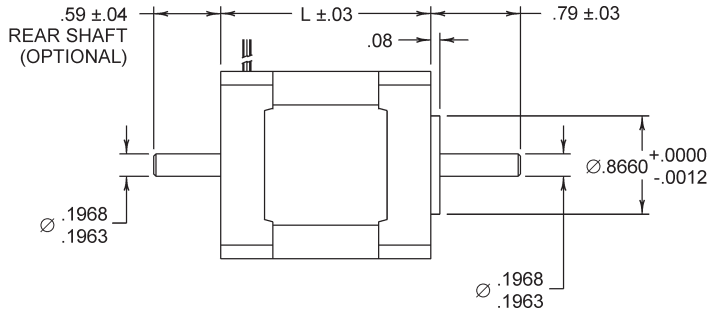
Solutions in motion



Rotary Hybrid Stepping Motor 1.8°

High Torque

SIZE
17
1.65"
SQ



Size 17

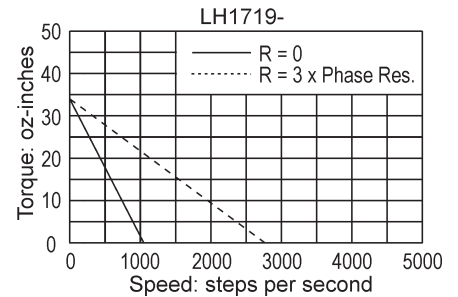
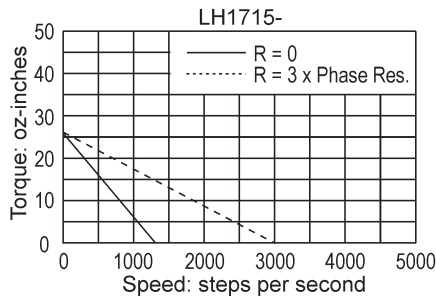
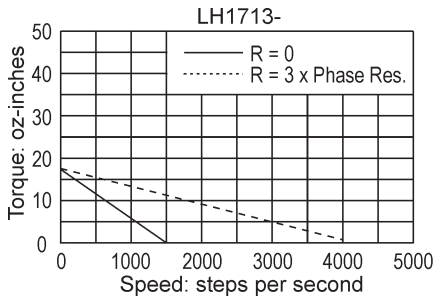
Model Series	Dimension "L" (inches)
LH1713	1.28
LH1715	1.52
LH1719	1.85

See page 38 for Connection Diagrams.

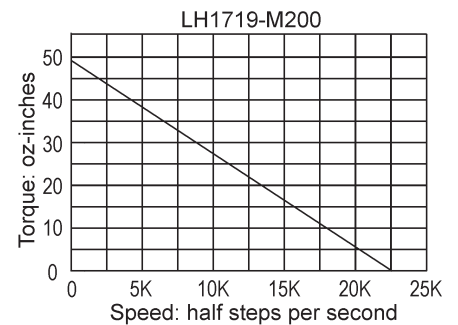
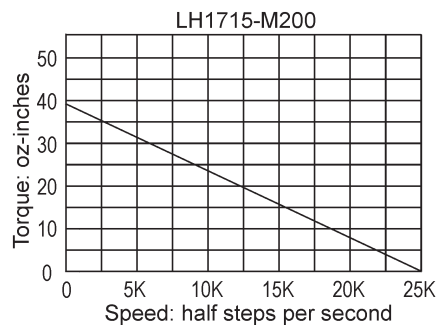
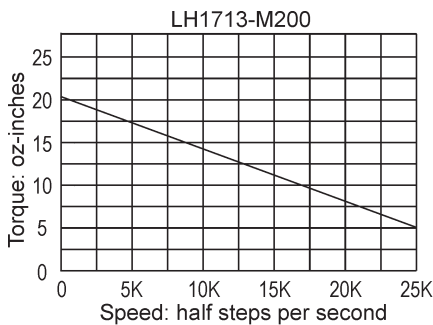
For the rear shaft extension, use the suffix "R" (for example, LH1713-10R).

Pullout Torque Speed Curves

Typical Unipolar Performance (6 Lead Motor): Constant Voltage Drive (L/R), 2 Phase On



Typical Bipolar Performance: 40 VDC Power Supply, 2 Amps/Phase



Solutions in motion

