



LH2101A/LH2201A/LH2301A Dual High Performance Op Amp

General Description

The LH2101A series of dual operational amplifiers are two LM101A type op amps in a single hermetic package. Featuring all the same performance characteristics of the single, these duals offer in addition closer thermal tracking, lower weight, reduced insertion cost, and smaller size than two singles. For additional information, see the LM101A data sheet and National's Linear Application Handbook.

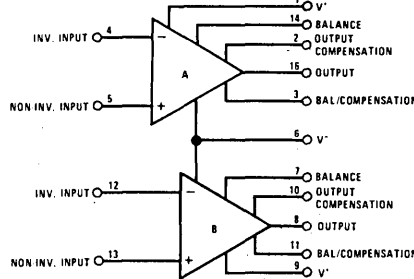
The LH2101A is specified for operation over the -55°C to +125°C military temperature range. The LH2201A is specified for operation over the

-25°C to +85°C temperature range. The LH2301A is specified for operation over the 0°C to +70°C temperature range.

Features

- Low offset voltage
- Low offset current
- Guaranteed drift characteristics
- Offsets guaranteed over entire common mode and supply voltage ranges
- Slew rate of 10V/μs as a summing amplifier

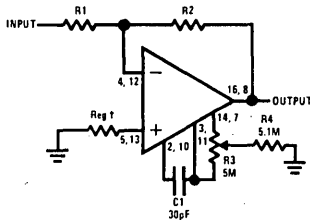
Connection Diagram



Order Number LH2101AD or LH2201AD or LH2301AD, see Package D16C
 LH2101AF, LH2201AF, LH2301AF, see Package F16B
 LH2101AJ, LH2201AJ, LH2301AJ, see Package J16A

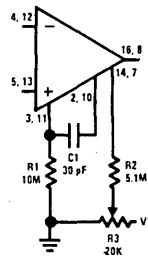
Auxiliary Circuits

Inverting Amplifier with Balancing Circuit

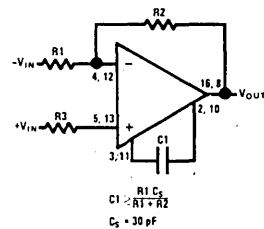


*May be zero or equal to parallel combination of R1 and R2 for minimum offset

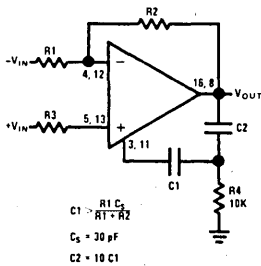
Alternate Balancing Circuit



Single Pole Compensation

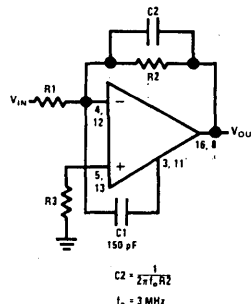


Two Pole Compensation



$C1 = \frac{R1 \cdot C2}{R1 + R2}$
 $C2 = 30 \text{ pF}$
 $C2 = 10 \text{ C1}$

Feedforward Compensation



$C2 = \frac{1}{2\pi f_c R2}$
 $f_c = 3 \text{ MHz}$

Absolute Maximum Ratings

Supply Voltage	±22V	Operating Temperature Range	LH2101A	-55°C to 125°C
Power Dissipation (Note 1)	500 mW		LH2201A	-25°C to 85°C
Differential Input Voltage	±30V		LH2301A	0°C to 70°C
Input Voltage (Note 2)	±15V	Storage Temperature Range		-65°C to 150°C
Output Short Circuit Duration	Continuous	Lead Temperature (Soldering, 10 sec)		300°C

Electrical Characteristics Each Side (Note 3)

PARAMETER	CONDITIONS	LIMITS			UNITS
		LH2101A	LH2201A	LH2301A	
Input Offset Voltage	$T_A = 25^\circ\text{C}, R_S < 50\text{ k}\Omega$	2.0	2.0	7.5	mV Max
Input Offset Current	$T_A = 25^\circ\text{C}$	10	10	50	nA Max
Input Bias Current	$T_A = 25^\circ\text{C}$	75	75	250	nA Max
Input Resistance	$T_A = 25^\circ\text{C}$	1.5	1.5	0.5	M Ω Min
Supply Current	$T_A = 25^\circ\text{C}, V_S = \pm 20\text{V}$	3.0	3.3	3.0	mA Max
Large Signal Voltage Gain	$T_A = 25^\circ\text{C}, V_S = \pm 15\text{V}$ $V_{\text{OUT}} = \pm 10\text{V}, R_L \geq 2\text{ k}\Omega$	50	50	25	V/mV Min
Input Offset Voltage	$R_S < 50\text{ k}\Omega$	3.0	3.0	10	mV Max
Average Temperature Coefficient of Input Offset Voltage		15	15	30	$\mu\text{V}/^\circ\text{C}$ Max
Input Offset Current		20	20	70	nA Max
Average Temperature Coefficient of Input Offset Current	$25^\circ\text{C} < T_A < 125^\circ\text{C}$ $-55^\circ\text{C} \leq T_A \leq 25^\circ\text{C}$	0.1 0.2	0.1 0.2	0.3 0.6	nA/ $^\circ\text{C}$ Max nA/ $^\circ\text{C}$ Max
Input Bias Current		100	100	300	nA Max
Supply Current	$T_A = +125^\circ\text{C}, V_S = \pm 20\text{V}$	2.5	2.5		mA Max
Large Signal Voltage Gain	$V_S = \pm 15\text{V}, V_{\text{OUT}} = \pm 10\text{V}$ $R_L \geq 2\text{ k}\Omega$	25	25	15	V/mV Min
Output Voltage Swing	$V_S = \pm 15\text{V}, R_L = 10\text{ k}\Omega$ $R_L = 2\text{ k}\Omega$	±12 ±10	±12 ±10	±12 ±10	V Min V Min
Input Voltage Range	$V_S = \pm 20\text{V}$	±15	±15	±12	V Min
Common Mode Rejection Ratio	$R_S \leq 50\text{ k}\Omega$	80	80	70	dB Min
Supply Voltage Rejection Ratio	$R_S < 50\text{ k}\Omega$	80	80	70	dB Min

Note 1: The maximum junction temperature of the LH2101A is 150°C, while that of the LH2201A is 100°C. For operating temperatures of devices in the flat package, the derating is based on a thermal resistance of 185°C/W when mounted on a 1/16-inch-thick epoxy glass board with 0.03-inch-wide, 2-ounce copper conductors. The thermal resistance of the dual-in-line package is 100°C/W, junction to ambient.

Note 2: For supply voltages less than ±15V, the absolute maximum input voltage is equal to the supply voltage.

Note 3: These specifications apply for $\pm 5\text{V} < V_S < \pm 20\text{V}$ and $-55^\circ\text{C} < T_A < 125^\circ\text{C}$, unless otherwise specified. With the LH2201A, however, all temperature specifications are limited to $-25^\circ\text{C} < T_A < 85^\circ\text{C}$. For the LH2301A these specifications apply for $0^\circ\text{C} < T_A < 70^\circ\text{C}$, and $\pm 5\text{V} < V_S < \pm 15\text{V}$. Supply current and input voltage range are specified as $V_S = \pm 15\text{V}$ for the LH2301A. $C_1 = 30\text{ pF}$ unless otherwise specified.