

PREPARED BY: DATE	SHARP	SPEC No.: LD-K24302
APPROVED BY: DATE		FILE No.:
		ISSUE: Mar. 21, 2012
		PAGE: 23 pages
	LARGE LIQUID CRYSTAL DISPLAY BUSSINESS GROUP SHARP CORPORATION SPECIFICATION	LIQUID CRYSTAL DISPLAY DIVISION

DEVICE SPECIFICATION FOR

TFT-LCD Module

Model No. LK800D3LA38

CUSTOMER'S APPROVAL

DATE

BY _____

PRESENTED

BY

Akira Yamaguchi

Akira Yamaguchi
DIVISION DEPUTY GENERAL MANAGER
LIQUID CRYSTAL DISPLAY DIVISION
LARGE LIQUID CRYSTAL BUSSINESS GROUP
SHARP CORPORATION

1. Application

This technical literature applies to the color 80.0" TFT-LCD Module LK800D3LA38.

* This technical literature is proprietary products of SHARP CORPORATION ("SHARP") and includes materials protected under copyright of SHARP. Do not reproduce or cause any third party to reproduce them in any form or by any means, electronic or mechanical, for any purpose, in whole or in part, without the express written permission of SHARP.

* In case of using the device for applications such as control and safety equipment for transportation (aircraft, trains, automobiles, etc.), rescue and security equipment and various safety related equipment which require higher reliability and safety, take into consideration that appropriate measures such as fail-safe functions and redundant system design should be taken.

* Do not use the device for equipment that requires an extreme level of reliability, such as aerospace applications, telecommunication equipment (trunk lines), nuclear power control equipment and medical or other equipment for life support.

* SHARP assumes no responsibility for any damage resulting from the use of the device that does not comply with the instructions and the precautions specified in these technical literature.

* Contact and consult with a SHARP sales representative for any questions about this device.

2. Overview

This module is a color active matrix LCD module incorporating amorphous silicon TFT (Thin Film Transistor). It is composed of a color TFT-LCD panel, driver ICs, control circuit, power supply circuit, LED driver circuit and back light system etc. Graphics and texts can be displayed on a 1920×RGB×1080 dots panel with one billion colors by using LVDS (Low Voltage Differential Signaling) to interface, +12V of DC supply voltages.

This module includes the DC driver circuit to drive the LED. (+24V of DC supply voltage)

And in order to improve the response time of LCD, this module applies the Over Shoot driving (O/S driving) technology for the control circuit. In the O/S driving technology, signals are being applied to the Liquid Crystal according to a pre-fixed process as an image signal of the present frame when a difference is found between image signal of the previous frame and that of the current frame after comparing them.

With this technology, image signals can be set so that liquid crystal response completes within one frame. As a result, motion blur reduces and clearer display performance can be realized.

This LCD module also adopts Double Frame Rate driving method including FRC (Frame Rate Control) function on the control circuit. Therefore the input signal to this LCD module is Single Frame Rate, but the output is Double-Frame Rate picture. FRC of this module is a game (PC) mode setup.

With combination of these technologies, motion blur can be reduced and clearer display performance can be realized.

4.2. TFT panel driving

CN1 (Interface signals and +12V DC power supply)

Using connector : FI-RNE51SZ-HF (Japan Aviation Electronics Ind., Ltd.)

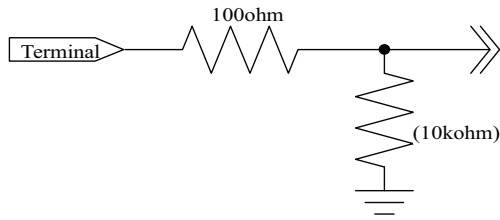
Mating connector : FI-RE51HL, FI-RE51CL (Japan Aviation Electronics Ind., Ltd.) or equivalent device

Mating LVDS transmitter : THC63LVD1023 or equivalent device

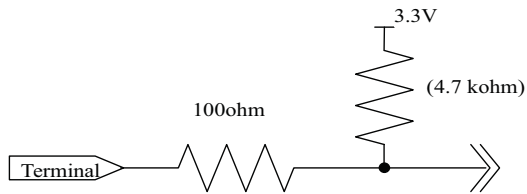
Pin No.	Symbol	Function	Remark
1	GND		
2	Reserved	It is required to set non-connection(OPEN)]	Pull UP: (3.3V) [Note3]
3	Reserved	It is required to set non-connection(OPEN)	Pull UP: (3.3V) [Note3]
4	Reserved	It is required to set non-connection(OPEN)	
5	Reserved	It is required to set non-connection(OPEN)	
6	Reserved	It is required to set non-connection(OPEN)	
7	SELLVDS	Select LVDS data order [Note4]	Pull down: (GND) [Note2]
8	Reserved	It is required to set non-connection(OPEN)	
9	O/S set	O/S operation setting H:O/S_ON, L:O/S_OFF	Pull UP: (3.3V) [Note3]
10	FRAME	Frame frequency setting 1:60Hz 0:50Hz	Pull down: (GND) [Note2]
11	GND		
12	AIN0-	Aport (-)LVDS CH0 differential data input	
13	AIN0+	Aport (+)LVDS CH0 differential data input	
14	AIN1-	Aport (-)LVDS CH1 differential data input	
15	AIN1+	Aport (+)LVDS CH1 differential data input	
16	AIN2-	Aport (-)LVDS CH2 differential data input	
17	AIN2+	Aport (+)LVDS CH2 differential data input	
18	GND		
19	ACK-	Aport LVDS Clock signal(-)	
20	ACK+	Aport LVDS Clock signal(+)	
21	GND		
22	AIN3-	Aport (-)LVDS CH3 differential data input	
23	AIN3+	Aport (+)LVDS CH3 differential data input	
24	AIN4-	Aport (-)LVDS CH4 differential data input	
25	AIN4+	Aport (+)LVDS CH4 differential data input	
26	GND		
27	GND		
28	BIN0-	Bport (-)LVDS CH0 differential data input	
29	BIN0+	Bport (+)LVDS CH0 differential data input	
30	BIN1-	Bport (-)LVDS CH1 differential data input	
31	BIN1+	Bport (+)LVDS CH1 differential data input	
32	BIN2-	Bport (-)LVDS CH2 differential data input	
33	BIN2+	Bport (+)LVDS CH2 differential data input	
34	GND		
35	BCK-	Bport LVDS Clock signal(-)	
36	BCK+	Bport LVDS Clock signal(+)	
37	GND		
38	BIN3-	Bport (-)LVDS CH3 differential data input	
39	BIN3+	Bport (+)LVDS CH3 differential data input	
40	BIN4-	Bport (-)LVDS CH4 differential data input	
41	BIN4+	Bport (+)LVDS CH4 differential data input	
42	GND		
43	GND		
44	GND		
45	GND		
46	GND		
47	VCC	+12V Power Supply	
48	VCC	+12V Power Supply	
49	VCC	+12V Power Supply	
50	VCC	+12V Power Supply	
51	VCC	+12V Power Supply	

[Note1] GND of a liquid crystal panel drive part has connected with a module chassis.

[Note2] The equivalent circuit figure of the terminal.



[Note3] The equivalent circuit figure of the terminal.



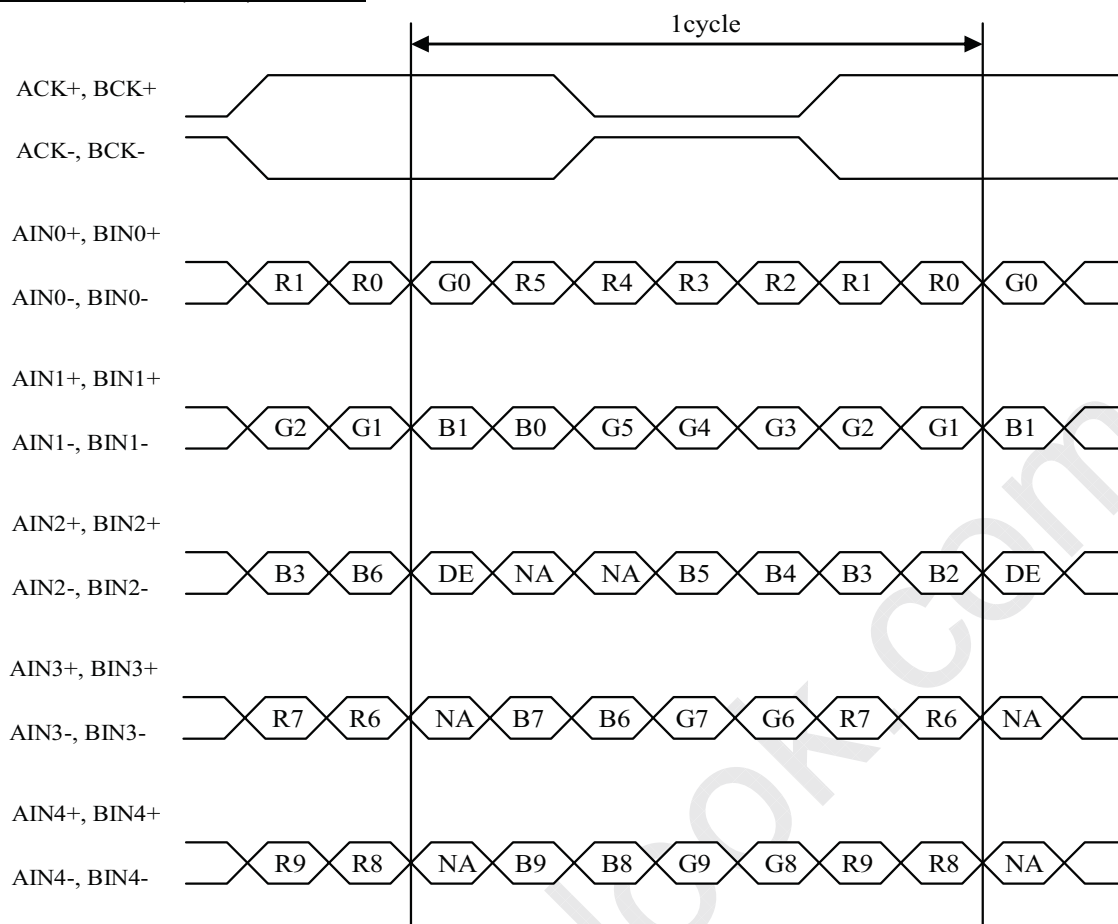
[Note4] LVDS Data order

SELLVDS		
Data	L(GND) or OPEN [VESA]	H(3.3V) [JEIDA]
TA0	R0(LSB)	R4
TA1	R1	R5
TA2	R2	R6
TA3	R3	R7
TA4	R4	R8
TA5	R5	R9(MSB)
TA6	G0(LSB)	G4
TB0	G1	G5
TB1	G2	G6
TB2	G3	G7
TB3	G4	G8
TB4	G5	G9(MSB)
TB5	B0(LSB)	B4
TB6	B1	B5
TC0	B2	B6
TC1	B3	B7
TC2	B4	B8
TC3	B5	B9(MSB)
TC4	NA	NA
TC5	NA	NA
TC6	DE(*)	DE(*)
TD0	R6	R2
TD1	R7	R3
TD2	G6	G2
TD3	G7	G3
TD4	B6	B2
TD5	B7	B3
TD6	N/A	N/A
TE0	R8	R0(LSB)
TE1	R9(MSB)	R1
TE2	G8	G0(LSB)
TE3	G9(MSB)	G1
TE4	B8	B0(LSB)
TE5	B9(MSB)	B1
TE6	N/A	N/A

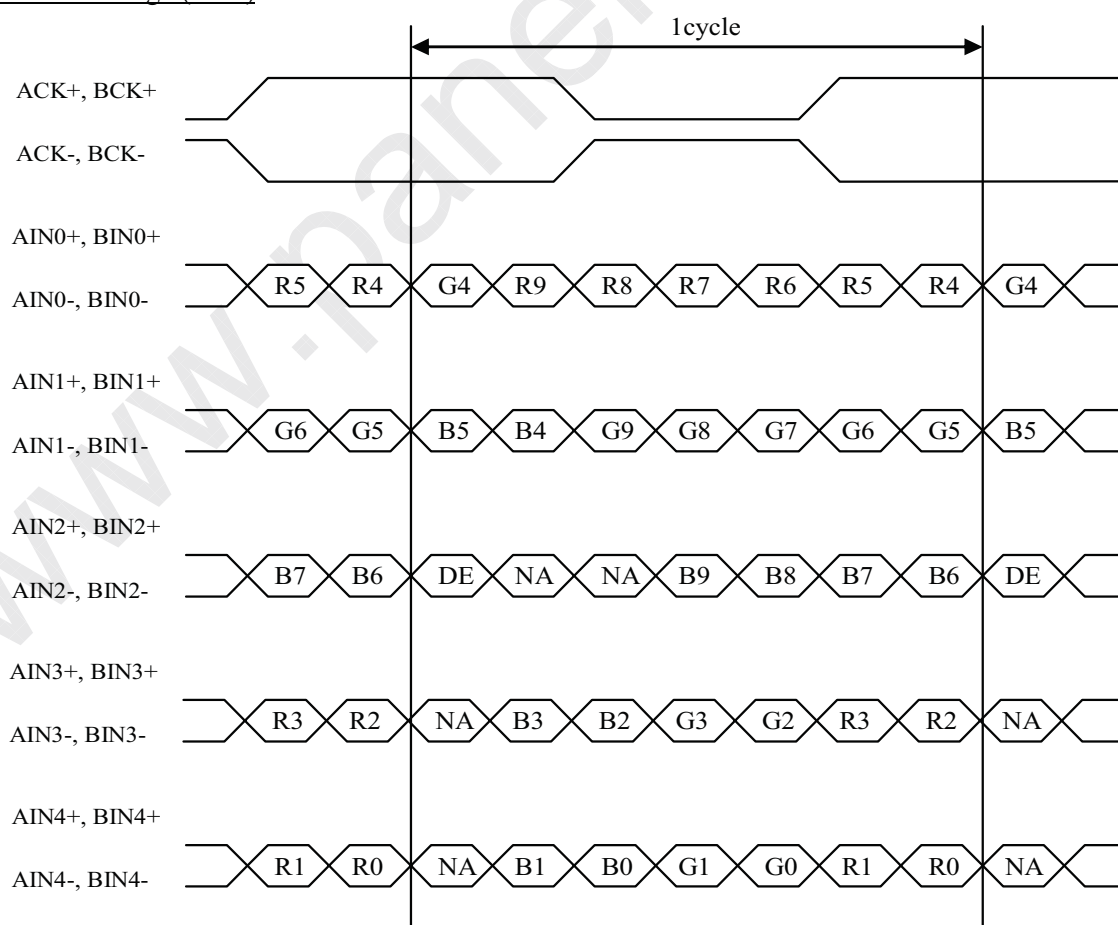
NA: Not Available

(*)Since the display position is prescribed by the rise of DE (Display Enable) signal, please do not fix DE signal during operation at "High".

SELLVDS= Low (GND) or OPEN



SELLVDS= High (3.3V)



DE: Display Enable, NA: Not Available (Fixed Low)

4.3. Backlight driving

CN101 (+24V DC power supply and inverter control)

Using connector: 20022WR-14B1(YEONHO)

Mating connector: 20022HS-14L (YEONHO) or equivalent connector.

Pin No.	Symbol	I/O	Function	Default(OPEN)	Input Impedance (min)	Remark
1	V _{LED}	In	+24V	-		
2	V _{LED}	In	+24V	-		
3	V _{LED}	In	+24V	-		
4	V _{LED}	In	+24V	-		
5	V _{LED}	In	+24V	-		
6	GND	In	GND	-		
7	GND	In	GND	-		
8	GND	In	GND	-		
9	GND	In	GND	-		
10	GND	In	GND	-		
11	Error_out	Out	Error Detection	Open Collector		[Note 1]
12	Von/off	In	LED driver On/Off	LED driver Off	10k-ohm pull-down to GND	[Note 2]
13	NC	-	-	-		
14	EX_DIM	In	Brightness Control (PWM 1~100%)	3.3V : pull up Brightness 100%	10k-ohm pull-up to 3.3V	[Note 3] Pulse Dimming

[Note 1] Error Detection

	MIN	TYP	MAX
Normal	-	-	0.8V
Abnormal	Open Collector		

Terminal load capacitance : 100pF

[Note 2] LED driver ON/OFF

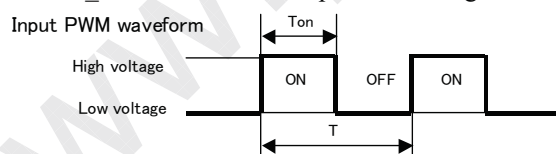
Input voltage	Symbol	Function
High voltage	Von	LED driver : On
Low voltage	Voff	LED driver : Off

High voltage: 2.4~3.6V

Low voltage: -0.3~0.8V

[Note3] Pulse Dimming

Pin No.14 'EX_DIM' is used for the pulse dimming control by the PWM duty with input pulse from 90Hz to 360Hz.



$$\text{Duty} = T_{on}/T$$

High voltage: 2.4~3.6V

Low voltage: -0.3~0.8V

		MIN	TYP	MAX	Remark
Pulse signal	[Hz]	90	-	360	
DUTY(T_{on}/T)	[%]	1	-	100	$T_a=25^{\circ}\text{C}$
Dimming level (luminance ratio)	[%]	-	-	100	$T_a=25^{\circ}\text{C}$

4.4. The back light system characteristics

The characteristics of the LED are shown in the following table. The value mentioned below is at the case of One LED.

Item	Symbol	Min.	Typ.	Max.	Unit	Remarks
Life time	T _{LED}	-	50,000	-	Hour	25°C [Note.1]

[Note1] LED life time is the expectation value calculated from lifetime data of maker report. It is defined as the time when brightness becomes 50% of the original value in the continuous operation under the condition of Ta=25°C.

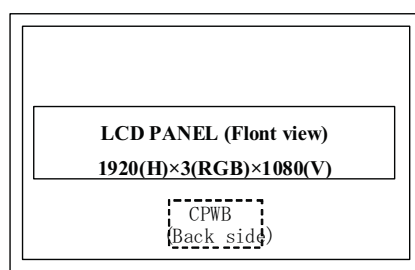
It is assumed that LED current becomes 70% when the LED dimming duty ratio is 70% and calculates.

5 Installation and Display direction

This module can be installed by both installation direction “landscape” and “portrait” as follows.

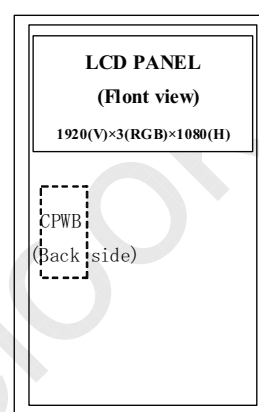
[Landscape direction]

In front view, CPWB is located BOTTOM



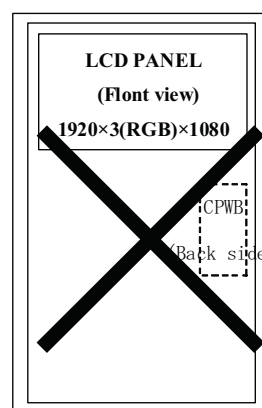
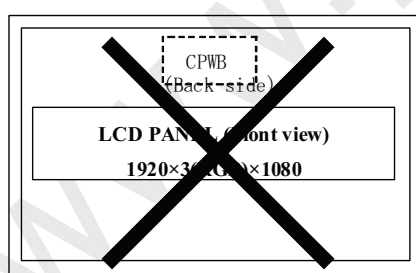
[Portrait direction]

In front view, CPWB is located Left-side



[Note] Other installation direction

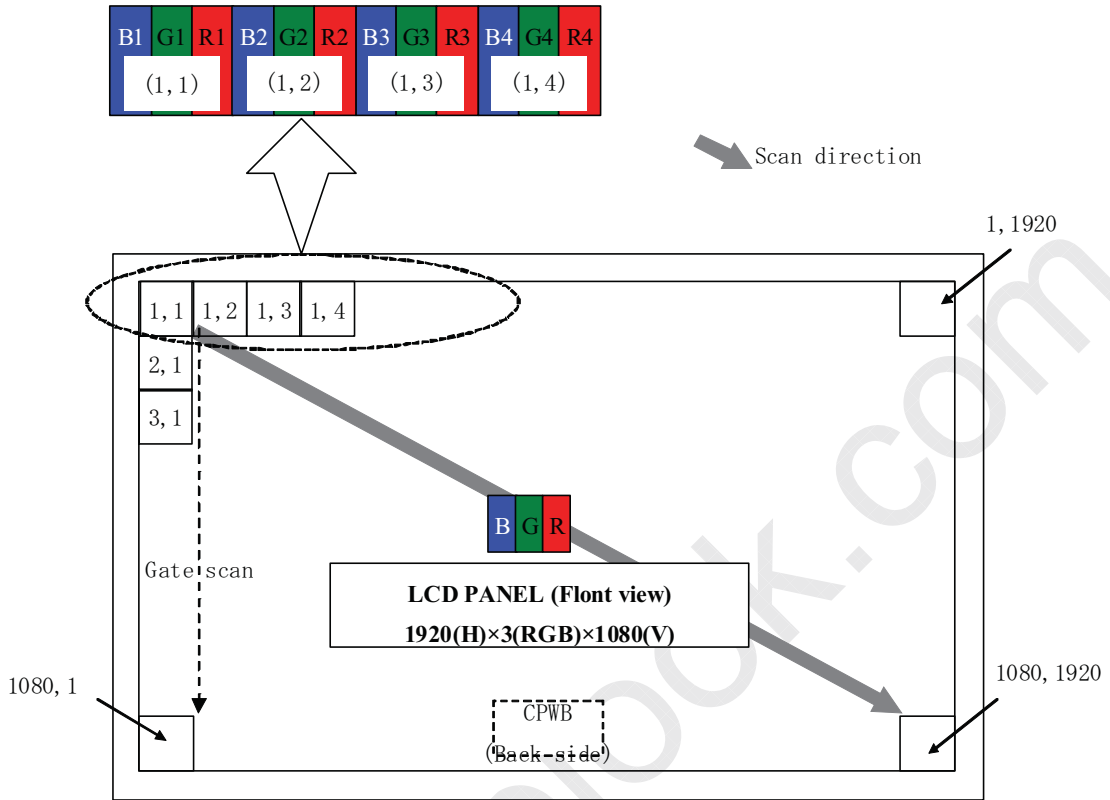
Since in case of the other installation direction the characteristic and reliability cannot be guaranteed, **NOT recommended.**



5.2 Display direction

Each subpixel R, G, B is aligned as follows.

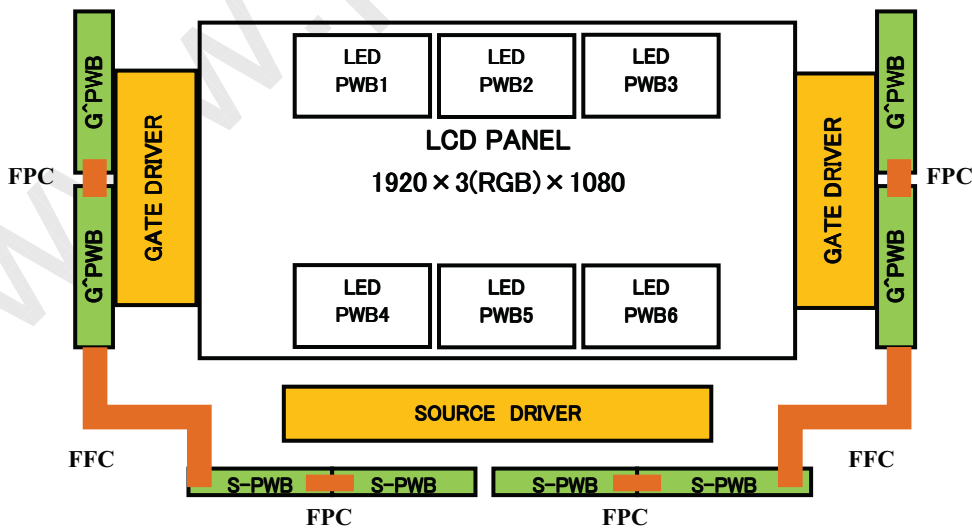
[Landscape direction]



LCD subpixel alignment in Landscape installaion

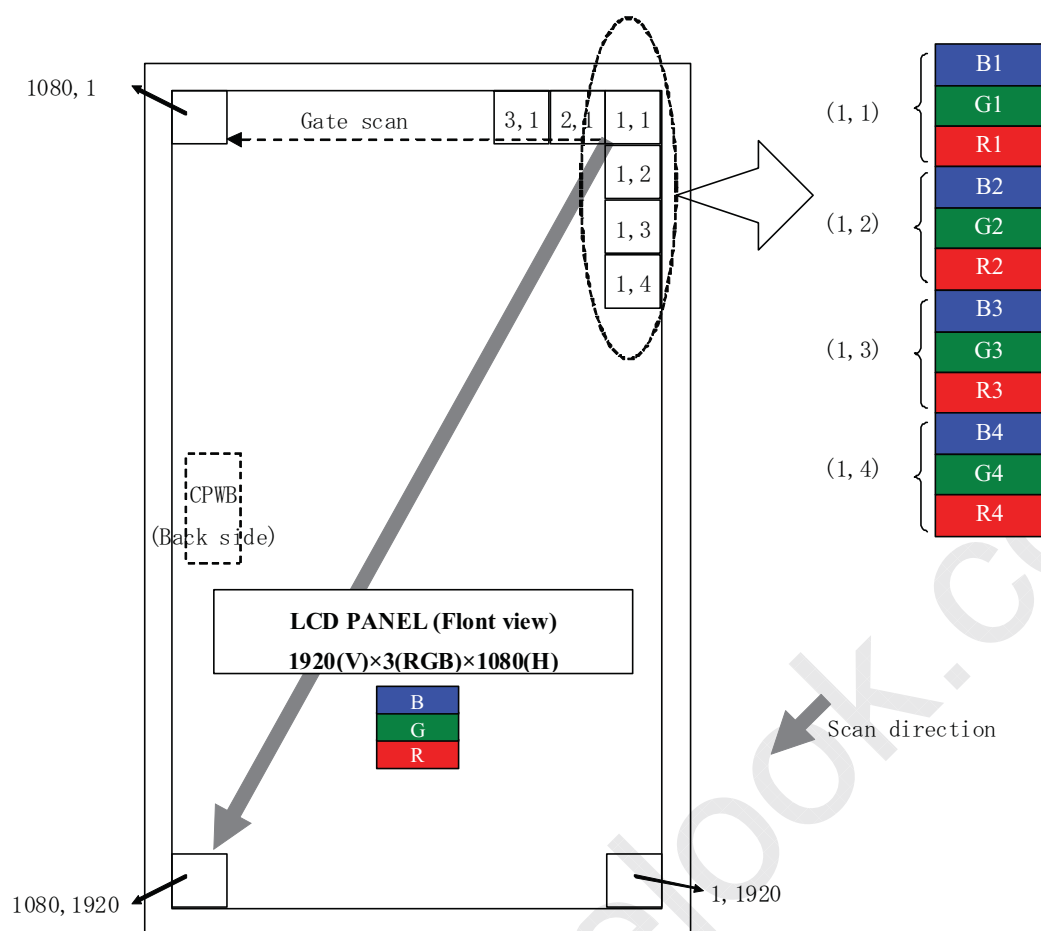
[Note] PWB layout

In Landscape installation,
Four S-PWBs and three LED-PWBs are layout at the bottom side of the screen.



Layout of LED-PWB, S-PWB & G-PWB (Front View)

[Portrait direction]

**LCD subpixel alignment in Portrait installation****6. Absolute Maximum Ratings**

Parameter	Symbol	Condition	Ratings	Unit	Remark
Input voltage (for C-PWB)	V_I	$T_a=25^{\circ}\text{C}$	-0.3 ~ 3.6	V	[Note 1]
12V supply voltage (for C-PWB)	VCC	$T_a=25^{\circ}\text{C}$	0 ~ +14	V	
Input voltage (for LED Driver)	Von/off DIM_SEL EX_DIM	$T_a=25^{\circ}\text{C}$	-0.3 ~ 3.9	V	
24V supply voltage (for LED Driver)	V_{LED}	$T_a=25^{\circ}\text{C}$	0 ~ +24	V	
Storage temperature	Tstg	-	-25 ~ +60	$^{\circ}\text{C}$	[Note 2]
Operation temperature (Ambient)	Topa	-	0 ~ +50	$^{\circ}\text{C}$	

[Note 1] SELLVDS, OS set, FRAME

[Note 2] Humidity 95%RH Max. ($T_a \leq 40^{\circ}\text{C}$)Maximum wet-bulb temperature at 39°C or less. ($T_a > 40^{\circ}\text{C}$)

No condensation.

7. Electrical Characteristics

7.1 Control circuit driving

Ta=25 °C

Parameter	Symbol	Min.	Typ.	Max.	Unit	Remark	
+12V supply voltage	Supply voltage	Vcc	11.4	12	12.6	V	[Note 1]
	Current dissipation	Icc	-	1.1	3.0	A	[Note 2]
	Inrush current	I _{RUSH}	-	4.1	-	A	t ₁ =500us [Note 7]
Permissible input ripple voltage	V _{RP}	-	-	100	mV _{P-P}	Vcc = +12.0V	
Input Low voltage	V _{IL}	0	-	1.0	V	[Note 3]	
Input High voltage	V _{IH}	2.3	-	3.3	V		
Input leak current (Low)	I _{IL1}	-	-	40	μA	V ₁ = 0V [Note 4]	
	I _{IL2}	-	-	750	μA	V ₁ = 0V [Note 5]	
Input leak current (High)	I _{IH1}	-	-	400	μA	V ₁ = 3.3V [Note 4]	
	I _{IH2}	-	-	40	μA	V ₁ = 3.3V [Note 5]	
Terminal resistor	R _T	-	100	-	Ω	Differential input	
Input Differential voltage	VID	200	400	600	mV	[Note 6]	
Differential input common mode voltage	V _{CM}	VID /2	1.2	2.4- VID /2	V	[Note 6]	

[Note]V_{CM}: Common mode voltage of LVDS driver.

[Note1]

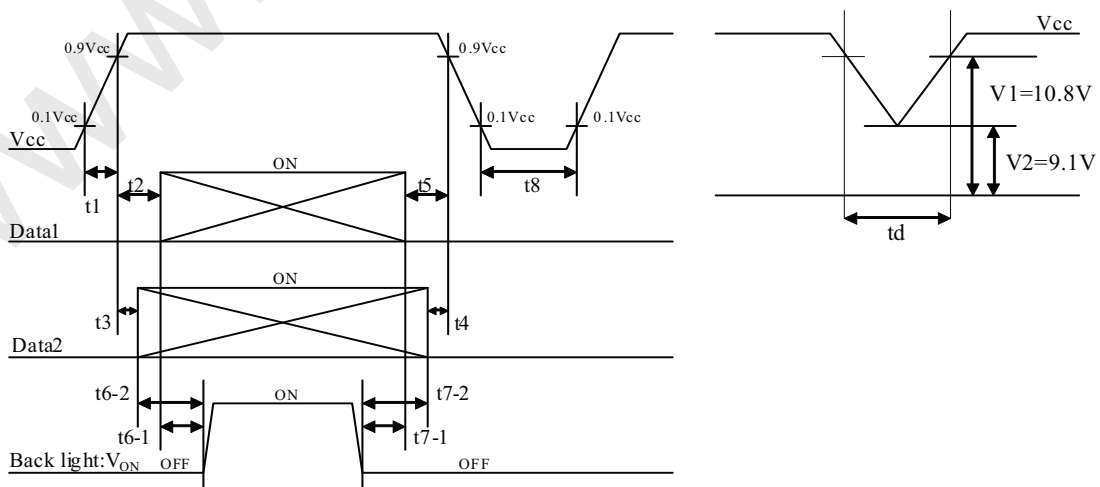
Input voltage sequences

- 50us. < t₁ < 20ms
- 20ms. < t₂ < 5s
- 20ms < t₃ < 5s
- 0 < t₄ < 1s
- 0 < t₅ < 1s
- (1sec) < t₆₋₁
- (1sec) < t₆₋₂
- 0 < t₇₋₁
- 0 < t₇₋₂
- 1s < t₈

Dip conditions for supply voltage

- a) V₂ ≤ Vcc < V₁
t_d < 10ms
- b) Vcc < V₂

This case is based on input voltage sequences.



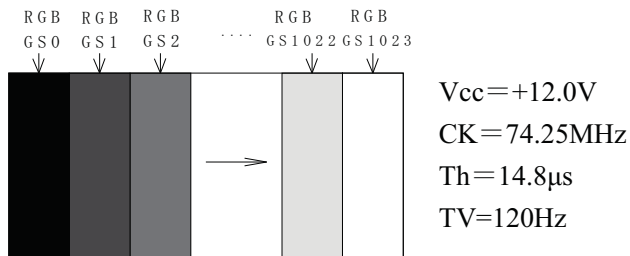
※ Data1: ACK±, AIN0±, AIN1±, AIN2±, AIN3±, AIN4±, BCK±, BIN0±, BIN1±, BIN2±, BIN3±, BIN4±,
*V_{CM} voltage pursues the sequence mentioned above

※ Data2: SELLVDS, O/S set, FRAME

[Note] About the relation between data input and back light lighting, please base on the above-mentioned input sequence. When back light is switched on before panel operation or after a panel operation stop, it may not display normally. But this phenomenon is not based on change of an incoming signal, and does not give damage to a liquid crystal display.

[Note 2] Typical current situation: 1024 gray-bar patterns. (Vcc = +12.0V)

The explanation of RGB gray scale is seen in section 8.

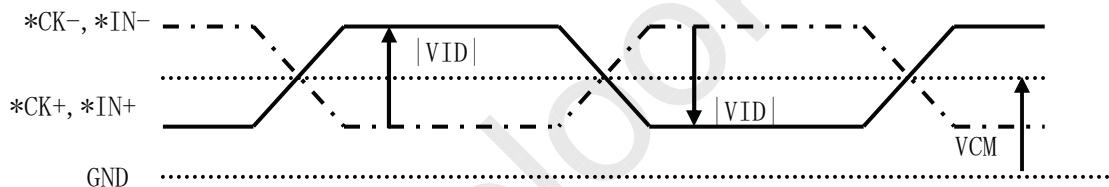


[Note 3] SELLVDS、FRAME、O/S set

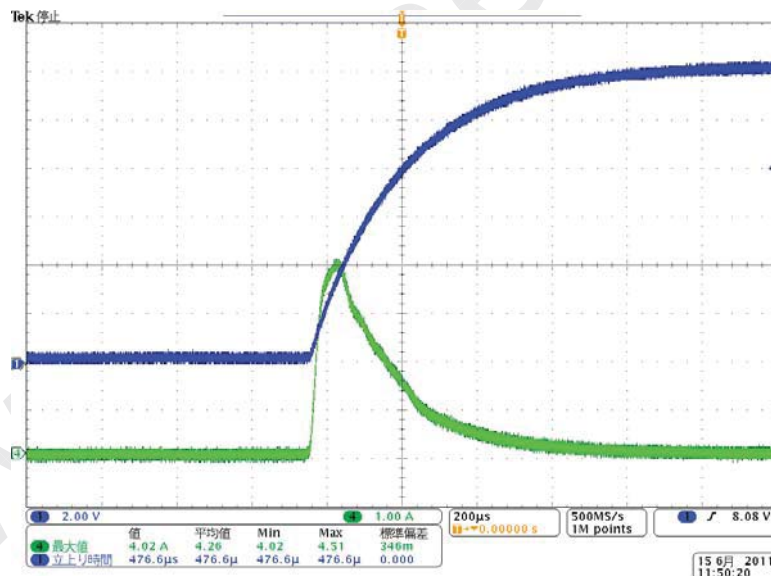
[Note 4] SELLVDS、FRAME

[Note 5] O/S set

[Note 6] ACK±, AIN0±, AIN1±, AIN2±, AIN3±, AIN4±, BCK±, BIN0±, BIN1±, BIN2±, BIN3±, BIN4±



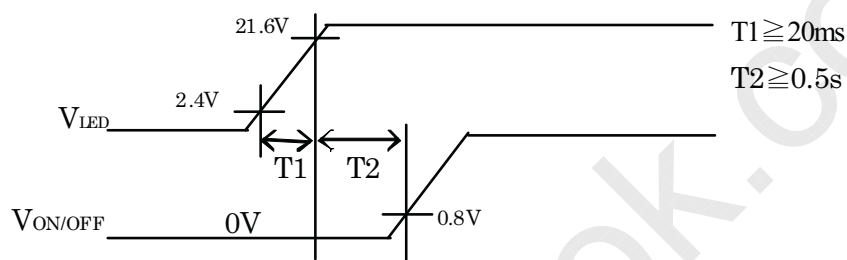
[Note 7] Vcc12V inrush current waveform



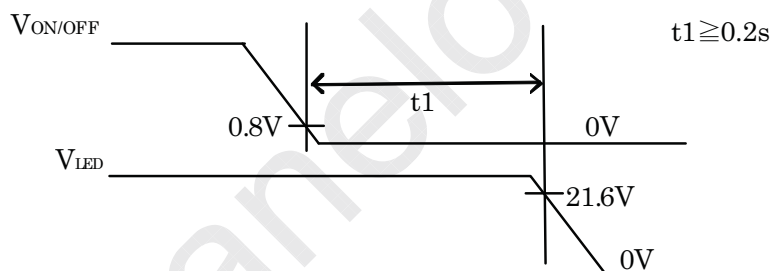
7.2 LED driving for back light

Parameter	Symbol	Min.	Typ.	Max.	Unit	Remark	
+24V supply voltage	Current dissipation	I_{LEDD}	-	10.5	11.6	A	$V_{LED}=+24V$ $T_a=25^{\circ}C$ DUTY=100%
	Irush current	I_{RUSH}	-	16	-	A	
	Supply voltage	V_{LED}	21.6	24.0	26.4	V	
Permissible input ripple voltage	V_{RP}	-	-	1	V_{P-P}	$V_{LED}=+24.0V$	
Input voltage (On)	V_{ON}	2.4	3.0	3.6	V	$V_{ON/OFF}$, EX_DIM	
Input voltage (Off)	V_{OFF}	-0.3	0	0.8	V		
Input voltage(DIM High)	V_{DIMH}	2.4	-	3.6	V	DIM_SEL	
Input voltage(DIM Low)	V_{DIML}	-0.3	-	0.8	V		

[Note] V_{LED} -turn-on condition



2) V_{LED} -turn-off condition



8. Timing characteristics of input signals

8.1 Timing characteristics

Timing diagrams of input signal are shown in Fig.2.

Parameter		Symbol	Min.	Typ.	Max.	Unit	Remark
Clock	Frequency	1/Tc	67	74.25	76	MHz	
Data enable signal	Horizontal period	TH	1050	1100	1300	clock	
			14.2	14.8	16.1	μs	
	Horizontal period (High)	THd	960	960	960	clock	
	Vertical period	TV	1109	1125	1400	line	
			47	60	61	Hz	
Vertical period (High)	TVd	1080	1080	1080	line		

[Note]-When vertical period is very long, flicker and etc. may occur.

-Please turn off the module after it shows the black screen.

-Please make sure that length of vertical period should become of an integral multiple of horizontal length of period. Otherwise, the screen may not display properly.

-As for your final setting of driving timing, we will conduct operation check test at our side, please inform your final setting.

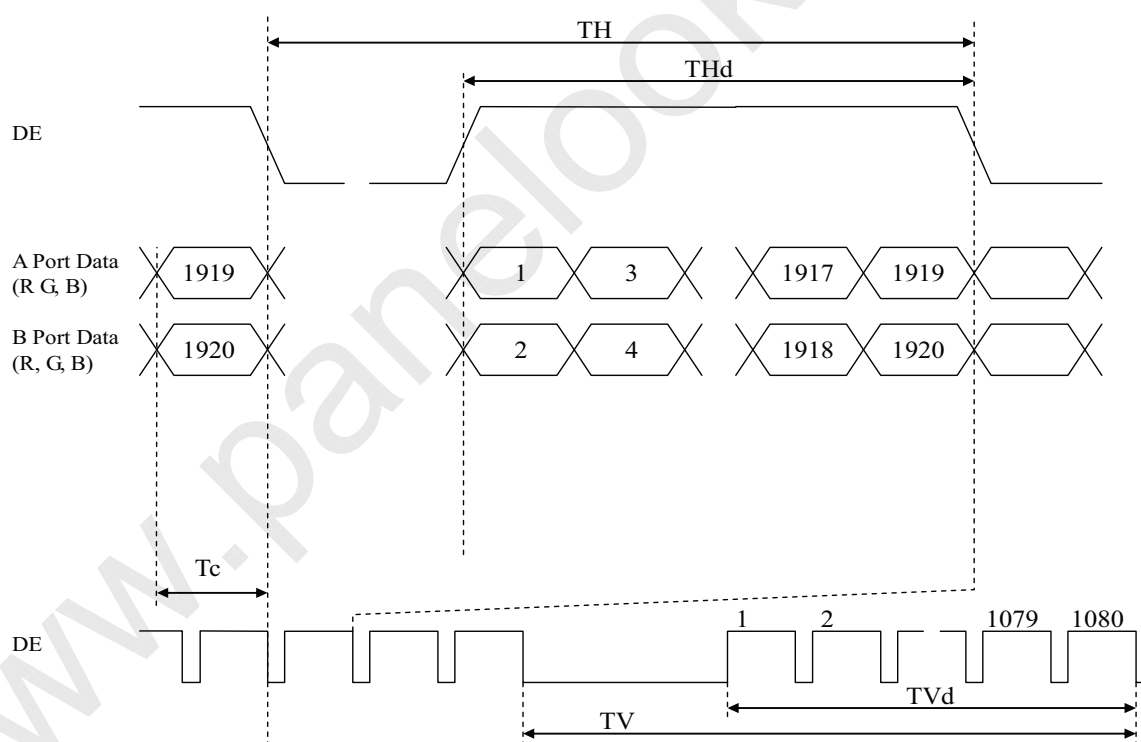
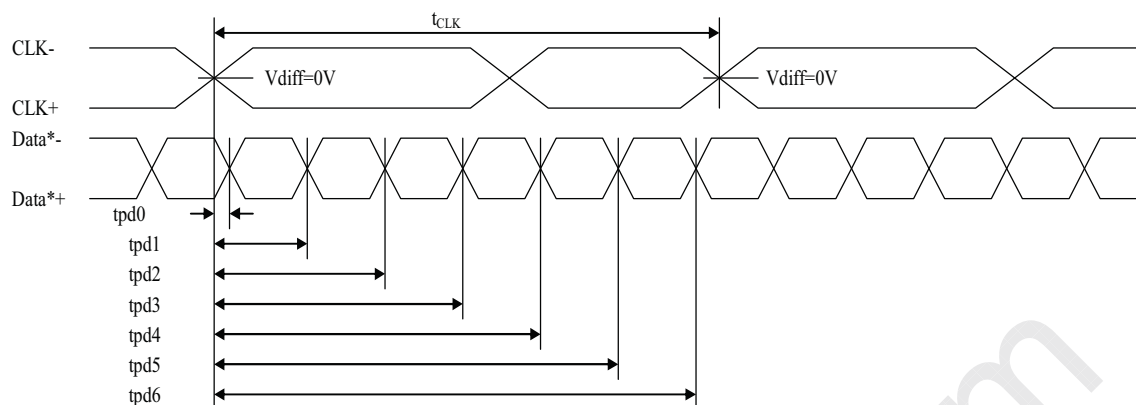


Fig.2 Timing diagram of input signal

8.2 LVDS signal characteristics



Item	Symbol	Min.	Typ.	Max.	Unit	
Data position	Delay time, CLK rising edge to serial bit position 0	$tpd0$	-0.25	0	0.25	ns
	Delay time, CLK rising edge to serial bit position 1	$tpd1$	$1 \cdot t_{CLK}/7 - 0.25$	$1 \cdot t_{CLK}/7$	$1 \cdot t_{CLK}/7 + 0.25$	
	Delay time, CLK rising edge to serial bit position 2	$tpd2$	$2 \cdot t_{CLK}/7 - 0.25$	$2 \cdot t_{CLK}/7$	$2 \cdot t_{CLK}/7 + 0.25$	
	Delay time, CLK rising edge to serial bit position 3	$tpd3$	$3 \cdot t_{CLK}/7 - 0.25$	$3 \cdot t_{CLK}/7$	$3 \cdot t_{CLK}/7 + 0.25$	
	Delay time, CLK rising edge to serial bit position 4	$tpd4$	$4 \cdot t_{CLK}/7 - 0.25$	$4 \cdot t_{CLK}/7$	$4 \cdot t_{CLK}/7 + 0.25$	
	Delay time, CLK rising edge to serial bit position 5	$tpd5$	$5 \cdot t_{CLK}/7 - 0.25$	$5 \cdot t_{CLK}/7$	$5 \cdot t_{CLK}/7 + 0.25$	
	Delay time, CLK rising edge to serial bit position 6	$tpd6$	$6 \cdot t_{CLK}/7 - 0.25$	$6 \cdot t_{CLK}/7$	$6 \cdot t_{CLK}/7 + 0.25$	

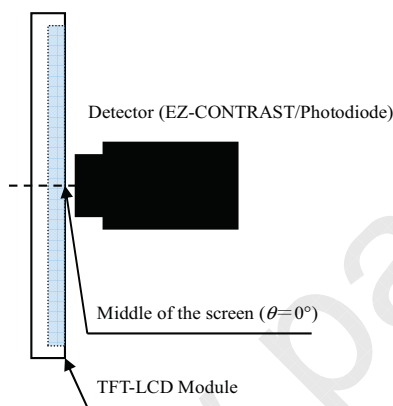
10. Optical characteristics

Ta=25°C, Vcc=12.V, VLED =+24V, Brightness 100%, Timing: 60Hz (typ. value)

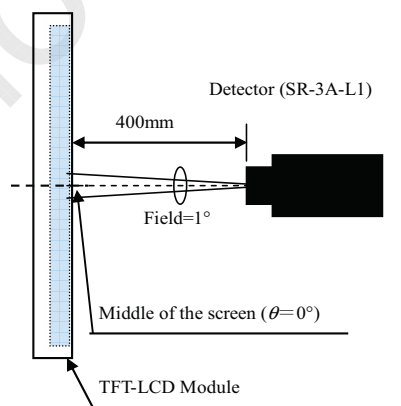
Parameter	Symbol	Condition	Min.	Typ.	Max.	Unit	Remark	
Viewing angle range	Horizontal	θ_{21} θ_{22}	CR \geq 10	70	88	-	Deg.	[Note1,4]
	Vertical	θ_{11} θ_{12}		70	88	-	Deg.	
Contrast ratio	CRn	$\theta=0$ deg.	4000	5000	-	-	[Note2,4]	
Response time	τ_{rd}		-	4	-	-	ms	[Note3,4,5]
Chromaticity	White		x	Typ.-0.03	0.282	Typ.+0.03	-	[Note4]
			y	Typ.-0.03	0.288	Typ.+0.03	-	
	Red		x	Typ.-0.03	0.640	Typ.+0.03	-	
			y	Typ.-0.03	0.348	Typ.+0.03	-	
	Green		x	Typ.-0.03	0.300	Typ.+0.03	-	
			y	Typ.-0.03	0.623	Typ.+0.03	-	
	Blue		x	Typ.-0.03	0.149	Typ.+0.03	-	
			y	Typ.-0.03	0.057	Typ.+0.03	-	
Luminance	White	Y_L	400	500	-	cd/m ²		
Luminance uniformity	White	δw	-	1.33	-	-	[Note6]	

- Measurement condition: Set the value of backlight control voltage to maximum luminance of white.
- The measurement shall be executed 60 minutes after lighting at rating.

[Note] The optical characteristics are measured using the following equipment.

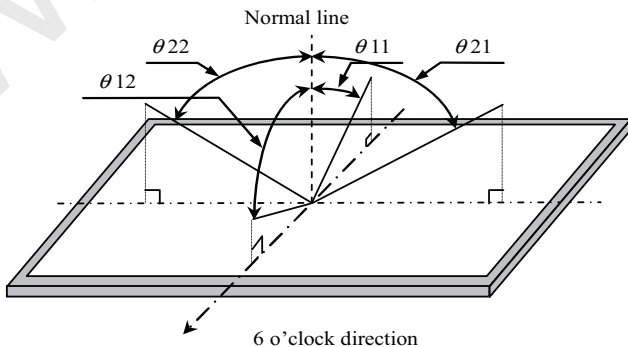


Measurement of viewing angle range and Response time.
 -Viewing angle range: EZ-CONTRAST
 -Response time: Photodiode



Measurement of Contrast, Luminance, Chromaticity.

[Note1] Definitions of viewing angle range:



[Note2] Definition of contrast ratio:

The contrast ratio is defined as the following.

$$\text{Contrast Ratio} = \frac{\text{Luminance (brightness) with all pixels white}}{\text{Luminance (brightness) with all pixels black}}$$

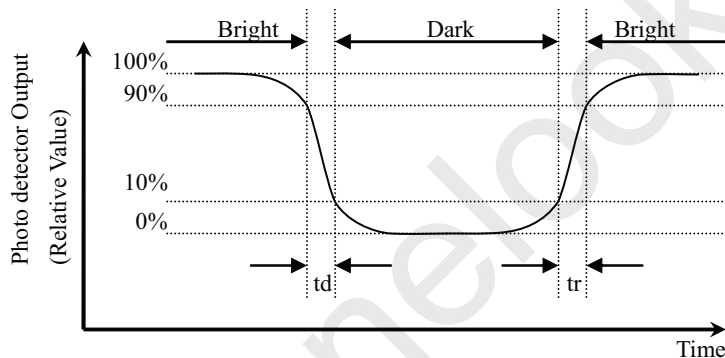
[Note3] Definition of response time

The response time (τ_{rd}) is defined as the following.

$$\tau_{rd} = \{\sum(\text{tr} : x - y) + \sum(\text{td} : x - y)\} / 20$$

τ_{rd} is the average value of the switching time from five gray levels (0%, 25%, 50%, 75% and 100%) to five gray levels (0%, 25%, 50%, 75% and 100%).

		Gray level of End (y)				
		0%	25%	50%	75%	100%
Gray level of Start (x)	0%		tr: 0%-25%	tr: 0%-50%	tr: 0%-75%	tr: 0%-100%
	25%	td: 25%-0%		tr: 25%-50%	tr: 25%-75%	tr: 25%-100%
	50%	td: 50%-0%	td: 50%-25%		tr: 50%-75%	tr: 50%-100%
	75%	td: 75%-0%	td: 75%-25%	td: 75%-50%		tr: 75%-100%
	100%	td: 100%-0%	td: 100%-25%	td: 100%-50%	td: 100%-75%	



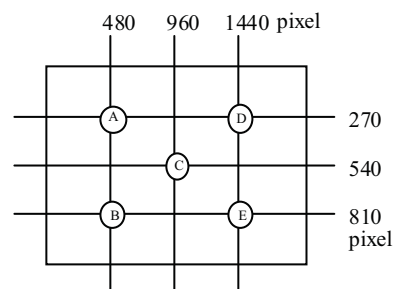
[Note4] This value shall be measured at center of the screen.

[Note5] This value is valid when O/S driving is used at typical input time value.

[Note6] Definition of white uniformity ;

White uniformity is defined as the following with five measurements. (A~E)

$$\delta_w = \frac{\text{Maximum luminance of five points (brightness)}}{\text{Minimum luminance of five points (brightness)}}$$



11. Packing form

- a) Piling number of cartons : 2 Maximum
 b) Packing quantity in one carton : 9pcs
 c) Carton size : 1982(W) × 1110(D) × 1297(H)
 d) Total mass of one carton filled with full modules : 393kg

12. Carton storage condition

Temperature	0°C to 40°C
Humidity	95% RH or less
Reference condition	20°C to 35°C, 85% RH or less (summer) 5°C to 15°C, 85% RH or less (winter) the total storage time (40°C, 95% RH) : 240h or less
Sunlight	Be sure to shelter a production from the direct sunlight.
Atmosphere	Harmful gas, such as acid and alkali which bites electronic components and/or wires must not be detected.
Notes	Be sure to put cartons on palette or base, don't put it on floor, and store them with removing from wall. Please take care of ventilation in storehouse and around cartons, and control changing temperature is within limits of natural environment.
Storage life	1 year.

13. Reliability test item

No.	Test item	Condition
1	High temperature storage test	Ta=60°C 240h
2	Low temperature storage test	Ta=-25°C 240h
3	High temperature and high humidity operation test	Ta=40°C ; 95%RH 240h (No condensation)
4	High temperature operation test	Ta=50°C 240h
5	Low temperature operation test	Ta=0°C 240h
6	Vibration test (non-operation)	Frequency: 10~57Hz/Vibration width (one side): 0.075mm : 58~500Hz/Acceleration: 9.8 m/s ² Sweep time: 11 minutes Test period: 3 hours (1h for each direction of X, Y, Z)
7	ESD	* At the following conditions, it is a thing without incorrect operation and destruction. (1)Non-operation: Contact electric discharge ±10kV Non-contact electric discharge ±20kV (2)Operation Contact electric discharge ±8kV Non-contact electric discharge ±15kV Conditions: 150pF, 330ohm

[Result evaluation criteria]

Under the display quality test condition with normal operation state, there shall be no change, which may affect practical display function.

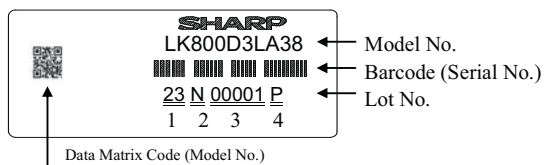
14. Others

14.1 Serial Label

The label that displays SHARP, product model (LK800D3LA38), a product number is stuck on the back of the module.

a) Overview

This label is stuck on the backlight chassis.



b) How to express Lot No.

Model No.	1	2	3	4
LK800D3LA38	23	N	00001	P
				Suffix Code P or T
				Serial No.
				Factory Code N NSEC
				Production Year & Month

14.2 Packing Label

This label is stuck on the each packing box.

ex) LK800D3LA38

社内品番 : (4S) LK800D3LA38P

Barcode (①)

LotNo. : (1T) 2012. * **

Barcode (②)

Quantity : (Q) * pcs

Barcode (③)

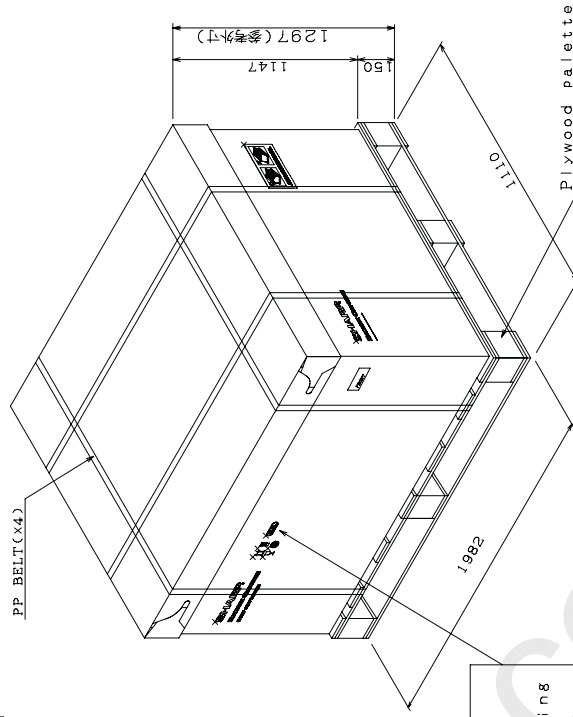
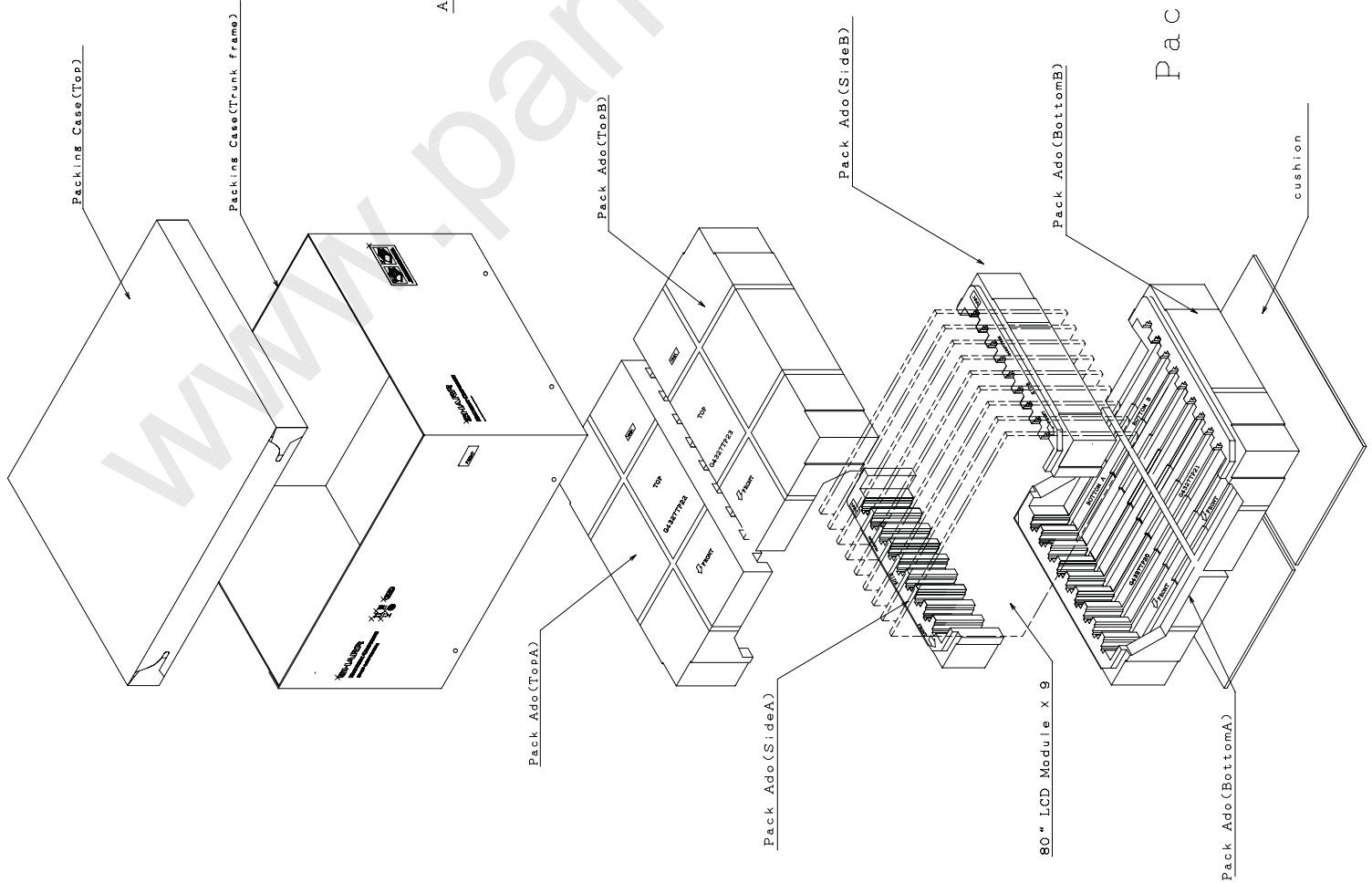
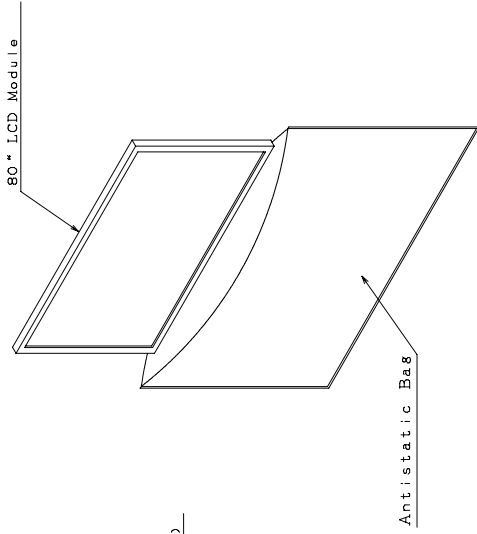
ユーザ品番 :
シャープ物流用ラベルです。

- ① Model No.& Suffix Code
- ② Lot No.
- ③ Quantity

15. Precautions

- a) Be sure to turn off the power supply when inserting or disconnecting the cable.
- b) Be sure to design the cabinet so that the module can be installed without any extra stress such as warp or twist.
- c) Since the front polarizer is easily damaged, pay attention not to scratch it.
- d) Since long contact with water may cause discoloration or spots, wipe off water drop immediately.
- e) When the panel surface is soiled, wipe it with absorbent cotton or other soft cloth.
- f) Since the panel is made of glass, it may break or crack if dropped or bumped on hard surface. Handle with care.
- g) Since CMOS LSI is used in this module, take care of static electricity and take the human earth into consideration when handling.
- h) The module has some printed circuit boards (PCBs) on the back side, take care to keep them from any stress or pressure when handling or installing the module; otherwise some of electronic parts on the PCBs may be damaged.
- i) Observe all other precautionary requirements in handling components.
- j) When some pressure is added onto the module from rear side constantly, it causes display non-uniformity issue, functional defect, etc. So, please avoid such design.
- k) When giving a touch to the panel at power on supply, it may cause some kinds of degradation. In that case, once turn off the power supply, and turn on after several seconds again, and that is disappear.
- l) When handling LCD module and assembling them into cabinets, please be noted that long-term storage in the environment of oxidization or deoxidization gas and the use of such materials as reagent, solvent, adhesive, resin, etc. which generate these gasses, may cause corrosion and discoloration of the LCD modules.
- m) This LCD module is designed to prevent dust from entering into it. However, there would be a possibility to have a bad effect on display performance in case of having dust inside of LCD module. Therefore, please ensure to design your TV set to keep dust away around LCD module.
- n) This LCD module passes over the rust.
- o) Adjusting Vcom has been set optimally before shipment, so do not change any adjusted value. If adjusted value is changed, the specification may not be satisfied.
- p) Disassembling the module can cause permanent damage and should be strictly avoided.
- q) Please be careful since image retention may occur when a fixed pattern is displayed for a long time.
- r) The chemical compound, which causes the destruction of ozone layer, is not being used.
- s) In any case, please do not resolve this LCD module.
- t) This module is corresponded to RoHS.
- u) When any question or issue occurs, it shall be solved by mutual discussion.

Parts Name	Material
Packing Case(Top)	Cardboard
Pack Ado(BottomA)	PS
Pack Ado(BottomB)	PS
Pack Ado(TopA)	PS
Pack Ado(TopB)	PS
Pack Ado(SideA)	PS
Pack Ado(SideB)	PS
cushion	PS
Packing Case(Trunk frame)	Cardboard
Plywood Palette	Plywoods
Antistatic Bag	PE(t=20μ)



R.C.
 There is R.C. marking on the this side.

Packing style of LK800D3LA28/38/48