

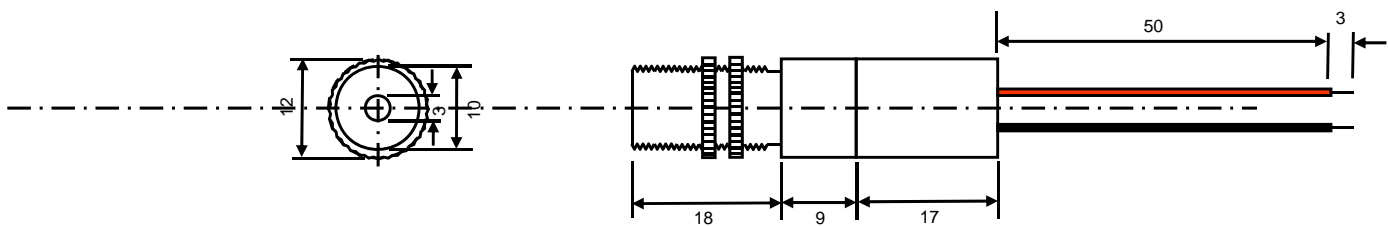


650nm Laser Module

Optical and Electrical Characteristics (T = 25 °C)

Parameter	Min.	Typical	Max.	Units	Note
Wavelength	640	650	660	nm	
Optical Power (at 25°C)			1	mW	
Control circuit	Auto power control				
Operating Voltage	2.7	3	3.3	V	
Operating Current	-		35	mA	
Operation Temperature Range	0	-	40	°C	
Storage Temperature Range	-25	-	70	°C	
Beam Size at 3M		< 10*10 mm		mm	
WIRE	Red Wire (+) DC 3V Length :50 ±5mm Black Wire (-) GND Length :50 ±5mm				26 AWG

Outline Dimensions



Unit:mm