

## LM124A/LM124JAN Low Power Quad Operational Amplifiers

Check for Samples: [LM124JAN](#)

### FEATURES

- Internally frequency compensated for unity gain
- Large DC voltage gain 100 dB
- Wide bandwidth (unity gain) 1 MHz
  - (temperature compensated)
- Wide power supply range:
  - Single supply 3V to 32V
  - or dual supplies  $\pm 1.5V$  to  $\pm 16V$
- Very low supply current drain (700  $\mu A$ )—essentially independent of supply voltage
- Low input biasing current 45 nA
  - (temperature compensated)
- Low input offset voltage 2 mV
  - and offset current: 5 nA
- Input common-mode voltage range includes ground
- Differential input voltage range equal to the power supply voltage
- Large output voltage swing 0V to  $V^+ - 1.5V$

### DESCRIPTION

The LM124/124A consists of four independent, high gain, internally frequency compensated operational amplifiers which were designed specifically to operate from a single power supply over a wide range of voltages. Operation from split power supplies is also possible and the low power supply current drain is independent of the magnitude of the power supply voltage.

Application areas include transducer amplifiers, DC gain blocks and all the conventional op amp circuits which now can be more easily implemented in single power supply systems. For example, the LM124/124A can be directly operated off of the standard +5Vdc power supply voltage which is used in digital systems and will easily provide the required interface electronics without requiring the additional +15Vdc power supplies.

### Unique Characteristics

- In the linear mode the input common-mode voltage range includes ground and the output voltage can also swing to ground, even though operated from only a single power supply voltage
- The unity gain cross frequency is temperature compensated
- The input bias current is also temperature compensated

### Advantages

- Eliminates need for dual supplies
- Four internally compensated op amps in a single package
- Allows directly sensing near GND and  $V_{OUT}$  also goes to GND
- Compatible with all forms of logic
- Power drain suitable for battery operation



Please be aware that an important notice concerning availability, standard warranty, and use in critical applications of Texas Instruments semiconductor products and disclaimers thereto appears at the end of this data sheet.

All trademarks are the property of their respective owners.

### Connection Diagram

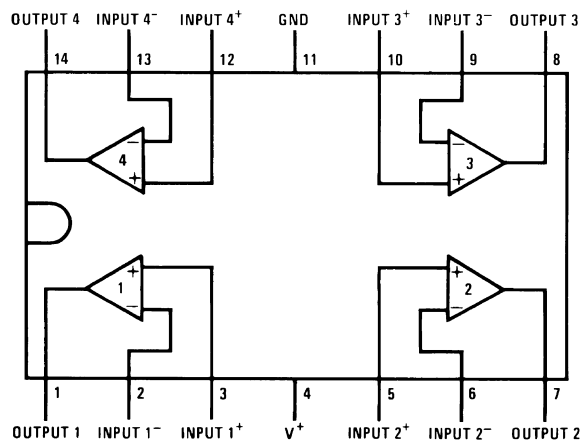


Figure 1. Dual-In-Line Package Top View

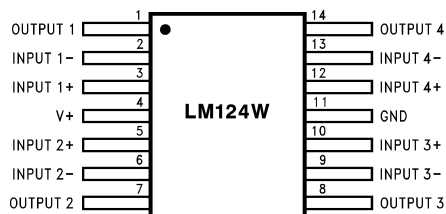
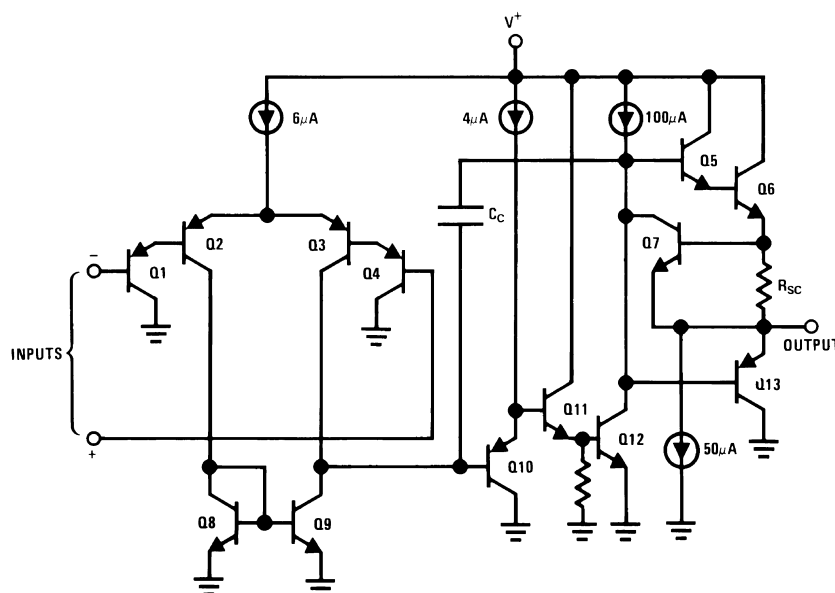


Figure 2. 14-Pin Package

### Schematic Diagram

(Each Amplifier)





These devices have limited built-in ESD protection. The leads should be shorted together or the device placed in conductive foam during storage or handling to prevent electrostatic damage to the MOS gates.

### Absolute Maximum Ratings <sup>(1)</sup>

Power Dissipation <sup>(2)</sup>	
CERDIP	400mW
CERPACK	350mW
Ceramic SOIC	350mW
Supply Voltage, V <sup>+</sup>	36V <sub>DC</sub> or ±18V <sub>DC</sub>
Input Voltage Differential	30V <sub>DC</sub>
Input Voltage	-0.3V <sub>DC</sub> to +32V <sub>DC</sub>
Input Current (V <sub>IN</sub> < -0.3V <sub>DC</sub> ) <sup>(3)</sup>	10 to 0.1mA
Output Short-Circuit to GND <sup>(4)</sup>	
V <sup>+</sup> ≤ 15V <sub>DC</sub> and T <sub>A</sub> = 25°C (One Amplifier)	Continuous
Operating Temperature Range	-55°C ≤ T <sub>A</sub> ≤ +125°C
Maximum Junction Temperature <sup>(2)</sup>	175°C
Storage Temperature Range	-65°C ≤ T <sub>A</sub> ≤ +150°C
Lead Temperature (Soldering, 10 seconds)	260°C
Thermal Resistance	
θ <sub>JA</sub>	
<b>CERDIP</b> (Still Air)	120°C/W
(500LF/Min Air flow)	51°C/W
<b>CERPACK</b> (Still Air)	140°C/W
(500LF/Min Air flow)	116°C/W
<b>Ceramic SOIC</b> (Still Air)	140°C/W
(500LF/Min Air flow)	116°C/W
θ <sub>Jc</sub>	
CERDIP	35°C/W
CERPACK	60°C/W
Ceramic SOIC	60°C/W
Package Weight (Typical)	
CERDIP	2200mg
CERPACK	460mg
Ceramic SOIC	410mg
ESD Tolerance <sup>(5)</sup>	250V

- (1) Absolute Maximum Ratings indicate limits beyond which damage to the device may occur. Operating Ratings indicate conditions for which the device is functional, but do not guarantee specific performance limits. For guaranteed specifications and test conditions, see the Electrical Characteristics. The guaranteed specifications apply only for the test conditions listed. Some performance characteristics may degrade when the device is not operated under the listed test conditions.
- (2) The maximum power dissipation must be derated at elevated temperatures and is dictated by T<sub>Jmax</sub> (maximum junction temperature), θ<sub>JA</sub> (package junction to ambient thermal resistance), and T<sub>A</sub> (ambient temperature). The maximum allowable power dissipation at any temperature is P<sub>Dmax</sub> = (T<sub>Jmax</sub> - T<sub>A</sub>)/θ<sub>JA</sub> or the number given in the Absolute Maximum Ratings, whichever is lower.
- (3) This input current will only exist when the voltage at any of the input leads is driven negative. It is due to the collector-base junction of the input PNP transistors becoming forward biased and thereby acting as input diode clamps. In addition to this diode action, there is also lateral NPN parasitic transistor action on the IC chip. This transistor action can cause the output voltages of the op amps to go to the V<sup>+</sup> voltage level (or to ground for a large overdrive) for the time duration that an input is driven negative. This is not destructive and normal output states will re-establish when the input voltage, which was negative, again returns to a value greater than -0.3V<sub>DC</sub> (at 25°C).
- (4) Short circuits from the output to V<sup>+</sup> can cause excessive heating and eventual destruction. When considering short circuits to ground, the maximum output current is approximately 40mA independent of the magnitude of V<sup>+</sup>. At values of supply voltage in excess of +15V<sub>DC</sub>, continuous short-circuits can exceed the power dissipation ratings and cause eventual destruction. Destructive dissipation can result from simultaneous shorts on all amplifiers.
- (5) Human body model, 1.5 kΩ in series with 100 pF.

**Quality Conformance Inspection**

MIL-STD-883, Method 5005 — Group A

Subgroup	Description	Temp (°C)
1	Static tests at	25
2	Static tests at	125
3	Static tests at	-55
4	Dynamic tests at	25
5	Dynamic tests at	125
6	Dynamic tests at	-55
7	Functional tests at	25
8A	Functional tests at	125
8B	Functional tests at	-55
9	Switching tests at	25
10	Switching tests at	125
11	Switching tests at	-55

**LM124 JAN DC — Drift Values LM124 JAN DC Electrical Characteristics**

SYMBOL	PARAMETER	CONDITIONS	NOTES	MIN	MAX	UNIT	SUB GROUPS
$V_{IO}$	Input Offset Voltage	$V_{CC}^+ = 30V, V_{CC}^- = \text{Gnd}, V_{CM} = +15V$		-5.0	5.0	mV	1
				-7.0	7.0	mV	2, 3
		$V_{CC}^+ = 2V, V_{CC}^- = -28V, V_{CM} = -13V$		-5.0	5.0	mV	1
				-7.0	7.0	mV	2, 3
		$V_{CC}^+ = 5V, V_{CC}^- = \text{Gnd}, V_{CM} = +1.4V$		-5.0	5.0	mV	1
		-7.0	7.0	mV	2, 3		
$I_{IO}$	Input Offset Current	$V_{CC}^+ = 30V, V_{CC}^- = \text{Gnd}, V_{CM} = +15V$		-30	30	nA	1, 2
				-75	75	nA	3
		$V_{CC}^+ = 2V, V_{CC}^- = -28V, V_{CM} = -13V$		-30	30	nA	1, 2
				-75	75	nA	3
		$V_{CC}^+ = 5V, V_{CC}^- = \text{Gnd}, V_{CM} = +1.4V$		-30	30	nA	1, 2
		-75	75	nA	3		
$\pm I_{IB}$	Input Bias Current	$V_{CC}^+ = 30V, V_{CC}^- = \text{Gnd}, V_{CM} = +15V$		-150	+0.1	nA	1, 2
				-300	+0.1	nA	3
		$V_{CC}^+ = 2V, V_{CC}^- = -28V, V_{CM} = -13V$		-150	+0.1	nA	1, 2
				-300	+0.1	nA	3
		$V_{CC}^+ = 5V, V_{CC}^- = \text{Gnd}, V_{CM} = +1.4V$		-150	+0.1	nA	1, 2
		-300	+0.1	nA	3		
$V_{CC}^+ = 2.5V, V_{CC}^- = -2.5V, V_{CM} = -1.1V$		-150	+0.1	nA	1, 2		
		-300	+0.1	nA	3		
+PSRR	Power Supply Rejection Ratio	$V_{CC}^- = \text{Gnd}, V_{CM} = -1.4V, 5V \leq V_{CC}^+ \leq 30V$		-100	100	$\mu\text{V/V}$	1, 2, 3
CMRR	Common Mode Rejection Ratio		(1)	76		dB	1, 2, 3
$I_{OS}^+$	Output Short Circuit Current	$V_{CC}^+ = 30V, V_{CC}^- = \text{Gnd}, V_o = +25V$		-70		mA	1, 2, 3
$I_{CC}$	Power Supply Current	$V_{CC}^+ = 30V, V_{CC}^- = \text{Gnd}$			3	mA	1, 2
					4	mA	3
Delta $V_{IO}$ / Delta T	Input Offset Voltage Temperature Sensitivity	$+25^\circ\text{C} \leq T_A \leq +125^\circ\text{C}, V_{CC}^+ = 5V, V_{CC}^- = 0V, V_{CM} = +1.4V$		-30	30	$\mu\text{V}/^\circ\text{C}$	2
				-30	30	$\mu\text{V}/^\circ\text{C}$	3
Delta $I_{IO}$ / Delta T	Input Offset Current Temperature Sensitivity	$+25^\circ\text{C} \leq T_A \leq +125^\circ\text{C}, V_{CC}^+ = 5V, V_{CC}^- = 0V, V_{CM} = +1.4V$		-400	400	$\text{pA}/^\circ\text{C}$	2
				-700	700	$\text{pA}/^\circ\text{C}$	3
		$-55^\circ\text{C} \leq T_A \leq +25^\circ\text{C}, V_{CC}^+ = 5V, V_{CC}^- = 0V, V_{CM} = +1.4V$		-700	700	$\text{pA}/^\circ\text{C}$	3

(1) The input common-mode voltage of either input signal voltage should not be allowed to go negative by more than 0.3V (at 25°C). The upper end of the common-mode voltage range is  $V^+ - 1.5V$  (at 25°C), but either or both inputs can go to +32V without damage independent of the magnitude of  $V^+$ .

**LM124 JAN DC — Drift Values LM124 JAN DC Electrical Characteristics**

SYMBOL	PARAMETER	CONDITIONS	NOTES	MIN	MAX	UNIT	SUB GROUPS
V <sub>OL</sub>	Logical "0" Output Voltage	V <sub>CC</sub> <sup>+</sup> = 30V, V <sub>CC</sub> <sup>-</sup> = Gnd, R <sub>L</sub> = 10KΩ			35	mV	4, 5, 6
		V <sub>CC</sub> <sup>+</sup> = 30V, V <sub>CC</sub> <sup>-</sup> = Gnd, I <sub>OL</sub> = 5mA			1.5	V	4, 5, 6
		V <sub>CC</sub> <sup>+</sup> = 4.5V, V <sub>CC</sub> <sup>-</sup> = Gnd, I <sub>OL</sub> = 2μA			0.4	V	4, 5, 6
V <sub>OH</sub>	Logical "1" Output Voltage	V <sub>CC</sub> <sup>+</sup> = 30V, V <sub>CC</sub> <sup>-</sup> = Gnd, I <sub>OH</sub> = -10mA		27		V	4, 5, 6
		V <sub>CC</sub> <sup>+</sup> = 4.5V, V <sub>CC</sub> <sup>-</sup> = Gnd, I <sub>OH</sub> = -10mA		2.4		V	4, 5
				2.3		V	6
A <sub>VS</sub> <sup>+</sup>	Voltage Gain	V <sub>CC</sub> <sup>+</sup> = 30V, V <sub>CC</sub> <sup>-</sup> = Gnd, 1V ≤ V <sub>O</sub> ≤ 26V, R <sub>L</sub> = 10KΩ		50		V/mV	4
				25		V/mV	5, 6
		V <sub>CC</sub> <sup>+</sup> = 30V, V <sub>CC</sub> <sup>-</sup> = Gnd, 5V ≤ V <sub>O</sub> ≤ 20V, R <sub>L</sub> = 2KΩ		50		V/mV	4
				25		V/mV	5, 6
A <sub>VS</sub>	Gain Voltage	V <sub>CC</sub> <sup>+</sup> = 5V, V <sub>CC</sub> <sup>-</sup> = Gnd, 1V ≤ V <sub>O</sub> ≤ 2.5V, R <sub>L</sub> = 10KΩ		10		V/mV	4, 5, 6
		V <sub>CC</sub> <sup>+</sup> = 5V, V <sub>CC</sub> <sup>-</sup> = Gnd, 1V ≤ V <sub>O</sub> ≤ 2.5V, R <sub>L</sub> = 2KΩ		10		V/mV	4, 5, 6
+V <sub>OP</sub>	Maximum Output Voltage Swing	V <sub>CC</sub> <sup>+</sup> = 30V, V <sub>CC</sub> <sup>-</sup> = Gnd, V <sub>O</sub> = +30V, R <sub>L</sub> = 10KΩ		27		V	4, 5, 6
		V <sub>CC</sub> <sup>+</sup> = 30V, V <sub>CC</sub> <sup>-</sup> = Gnd, V <sub>O</sub> = +30V, R <sub>L</sub> = 2KΩ		26		V	4, 5, 6

## LM124 JAN DC — Drift Values LM124 JAN AC Electrical Characteristics

The following conditions apply to all the following parameters, unless otherwise specified.

AC:  $+V_{CC} = 30V$ ,  $-V_{CC} = 0V$ .

SYMBOL	PARAMETER	CONDITIONS	NOTES	MIN	MAX	UNIT	SUB GROUPS
TR <sub>TR</sub>	Transient Response: Rise Time	$V_{CC}^+ = 30V$ , $V_{CC}^- = \text{Gnd}$			1.0	$\mu\text{S}$	7, 8A, 8B
TR <sub>OS</sub>	Transient Response: Overshoot	$V_{CC}^+ = 30V$ , $V_{CC}^- = \text{Gnd}$			50	%	7, 8A, 8B
$\pm S_R$	Slew Rate: Rise/Fall	$V_{CC}^+ = 30V$ , $V_{CC}^- = \text{Gnd}$		0.1		$V/\mu\text{S}$	7, 8A, 8B
NI <sub>BB</sub>	Noise Broadband	$V_{CC}^+ = 15V$ , $V_{CC}^- = -15V$ , BW = 10Hz to 5KHz			15	$\mu\text{V}/\text{rms}$	7
NI <sub>PC</sub>	Noise Popcorn	$V_{CC}^+ = 15V$ , $V_{CC}^- = -15V$ , $R_s = 20K\Omega$			50	$\mu\text{V}/\text{pK}$	7
C <sub>S</sub>	Channel Separation	$V_{CC}^+ = 30V$ , $V_{CC}^- = \text{Gnd}$ , $V_{IN} = 1V$ and $16V$ , $R_L = 2K\Omega$		80		dB	7

**LM124 JAN DC — Drift Values**

“Delta calculations performed on JAN S and QMLV devices at group B, subgroup 5 only”

SYMBOL	PARAMETER	CONDITIONS	NOTES	MIN	MAX	UNIT	SUB GROUPS
$V_{IO}$	Input Offset Voltage	$V_{CC}^+ = 30V, V_{CC}^- = \text{Gnd},$ $V_{CM} = +15V$		-1.0	1.0	mV	1
$\pm I_B$	Input Bias Current	$V_{CC}^+ = 30V, V_{CC}^- = \text{Gnd},$ $V_{CM} = +15V$		-15	15	nA	1



**LM124A JAN DC — Drift Values LM124A JAN DC Electrical Characteristics**

SYMBOL	PARAMETER	CONDITIONS	NOTES	MIN	MAX	UNIT	SUB GROUPS
V <sub>IO</sub>	Input Offset Voltage	V <sub>CC</sub> <sup>+</sup> = 30V, V <sub>CC</sub> <sup>-</sup> = Gnd, V <sub>CM</sub> = +15V		-2.0	2.0	mV	1
				-4.0	4.0	mV	2, 3
		V <sub>CC</sub> <sup>+</sup> = 2V, V <sub>CC</sub> <sup>-</sup> = -28V, V <sub>CM</sub> = -13V		-2.0	2.0	mV	1
				-4.0	4.0	mV	2, 3
		V <sub>CC</sub> <sup>+</sup> = 5V, V <sub>CC</sub> <sup>-</sup> = Gnd, V <sub>CM</sub> = +1.4V		-2.0	2.0	mV	1
	-4.0	4.0	mV	2, 3			
I <sub>IO</sub>	Input Offset Current	V <sub>CC</sub> <sup>+</sup> = 30V, V <sub>CC</sub> <sup>-</sup> = Gnd, V <sub>CM</sub> = +15V		-10	10	nA	1, 2
				-30	30	nA	3
		V <sub>CC</sub> <sup>+</sup> = 2V, V <sub>CC</sub> <sup>-</sup> = -28V, V <sub>CM</sub> = -13V		-10	10	nA	1, 2
				-30	30	nA	3
		V <sub>CC</sub> <sup>+</sup> = 5V, V <sub>CC</sub> <sup>-</sup> = Gnd, V <sub>CM</sub> = +1.4V		-10	10	nA	1, 2
	-30	30	nA	3			
±I <sub>B</sub>	Input Bias Current	V <sub>CC</sub> <sup>+</sup> = 30V, V <sub>CC</sub> <sup>-</sup> = Gnd, V <sub>CM</sub> = +15V		-50	+0.1	nA	1, 2
				-100	+0.1	nA	3
		V <sub>CC</sub> <sup>+</sup> = 2V, V <sub>CC</sub> <sup>-</sup> = -28V, V <sub>CM</sub> = -13V		-50	+0.1	nA	1, 2
				-100	+0.1	nA	3
		V <sub>CC</sub> <sup>+</sup> = 5V, V <sub>CC</sub> <sup>-</sup> = Gnd, V <sub>CM</sub> = +1.4V		-50	+0.1	nA	1, 2
	-100	+0.1	nA	3			
+PSRR	Power Supply Rejection Ratio	V <sub>CC</sub> <sup>-</sup> = Gnd, V <sub>CM</sub> = -1.4V, 5V ≤ V <sub>CC</sub> <sup>+</sup> ≤ 30V		-100	100	μV/V	1, 2, 3
CMRR	Common Mode Rejection Ratio		(1)	76		dB	1, 2, 3
I <sub>OS+</sub>	Output Short Circuit Current	V <sub>CC</sub> <sup>+</sup> = 30V, V <sub>CC</sub> <sup>-</sup> = Gnd, V <sub>O</sub> = +25V		-70		mA	1, 2, 3
I <sub>CC</sub>	Power Supply Current	V <sub>CC</sub> <sup>+</sup> = 30V, V <sub>CC</sub> <sup>-</sup> = Gnd			3.0	mA	1, 2
					4.0	mA	3
Delta V <sub>IO</sub> / Delta T	Input Offset Voltage Temperature Sensitivity	+25°C ≤ T <sub>A</sub> ≤ +125°C, V <sub>CC</sub> <sup>+</sup> = 5V, V <sub>CC</sub> <sup>-</sup> = 0V, V <sub>CM</sub> = +1.4V		-30	30	μV/°C	2
		-55°C ≤ T <sub>A</sub> ≤ +25°C, V <sub>CC</sub> <sup>+</sup> = 5V, V <sub>CC</sub> <sup>-</sup> = 0V, V <sub>CM</sub> = +1.4V		-30	30	μV/°C	3
Delta I <sub>IO</sub> / Delta T	Input Offset Current Temperature Sensitivity	+25°C ≤ T <sub>A</sub> ≤ +125°C, V <sub>CC</sub> <sup>+</sup> = 5V, V <sub>CC</sub> <sup>-</sup> = 0V, V <sub>CM</sub> = +1.4V		-400	400	pA/°C	2
		-55°C ≤ T <sub>A</sub> ≤ +25°C, V <sub>CC</sub> <sup>+</sup> = 5V, V <sub>CC</sub> <sup>-</sup> = 0V, V <sub>CM</sub> = +1.4V		-700	700	pA/°C	3

(1) The input common-mode voltage of either input signal voltage should not be allowed to go negative by more than 0.3V (at 25°C). The upper end of the common-mode voltage range is V<sup>+</sup> - 1.5V (at 25°C), but either or both inputs can go to +32V without damage independent of the magnitude of V<sup>+</sup>.

**LM124A JAN DC — Drift Values LM124A JAN DC Electrical Characteristics**

SYMBOL	PARAMETER	CONDITIONS	NOTES	MIN	MAX	UNIT	SUB GROUPS
V <sub>OL</sub>	Logical "0" Output Voltage	V <sub>CC</sub> <sup>+</sup> = 30V, V <sub>CC</sub> <sup>-</sup> = Gnd, R <sub>L</sub> = 10KΩ			35	mV	4, 5, 6
		V <sub>CC</sub> <sup>+</sup> = 30V, V <sub>CC</sub> <sup>-</sup> = Gnd, I <sub>OL</sub> = 5mA			1.5	V	4, 5, 6
		V <sub>CC</sub> <sup>+</sup> = 4.5V, V <sub>CC</sub> <sup>-</sup> = Gnd, I <sub>OL</sub> = 2μA			0.4	V	4, 5, 6
V <sub>OH</sub>	Logical "1" Output Voltage	V <sub>CC</sub> <sup>+</sup> = 30V, V <sub>CC</sub> <sup>-</sup> = Gnd, I <sub>OH</sub> = -10mA		27		V	4, 5, 6
		V <sub>CC</sub> <sup>+</sup> = 4.5V, V <sub>CC</sub> <sup>-</sup> = Gnd, I <sub>OH</sub> = -10mA		2.4		V	4, 5
				2.3		V	6
A <sub>VS</sub> <sup>+</sup>	Voltage Gain	V <sub>CC</sub> <sup>+</sup> = 30V, V <sub>CC</sub> <sup>-</sup> = Gnd, 1V ≤ V <sub>O</sub> ≤ 26V, R <sub>L</sub> = 10KΩ		50		V/mV	4
				25		V/mV	5, 6
		V <sub>CC</sub> <sup>+</sup> = 30V, V <sub>CC</sub> <sup>-</sup> = Gnd, 5V ≤ V <sub>O</sub> ≤ 20V, R <sub>L</sub> = 2KΩ		50		V/mV	4
				25		V/mV	5, 6
A <sub>VS</sub>	Gain Voltage	V <sub>CC</sub> <sup>+</sup> = 5V, V <sub>CC</sub> <sup>-</sup> = Gnd, 1V ≤ V <sub>O</sub> ≤ 2.5V, R <sub>L</sub> = 10KΩ		10		V/mV	4, 5, 6
		V <sub>CC</sub> <sup>+</sup> = 5V, V <sub>CC</sub> <sup>-</sup> = Gnd, 1V ≤ V <sub>O</sub> ≤ 2.5V, R <sub>L</sub> = 2KΩ		10		V/mV	4, 5, 6
+V <sub>OP</sub>	Maximum Output Voltage Swing	V <sub>CC</sub> <sup>+</sup> = 30V, V <sub>CC</sub> <sup>-</sup> = Gnd, V <sub>O</sub> = +30V, R <sub>L</sub> = 10KΩ		27		V	4, 5, 6
		V <sub>CC</sub> <sup>+</sup> = 30V, V <sub>CC</sub> <sup>-</sup> = Gnd, V <sub>O</sub> = +30V, R <sub>L</sub> = 2KΩ		26		V	4, 5, 6

## LM124A JAN DC — Drift Values LM124A JAN AC Electrical Characteristics

The following conditions apply to all the following parameters, unless otherwise specified.

AC:  $+V_{CC} = 30V$ ,  $-V_{CC} = 0V$

SYMBOL	PARAMETER	CONDITIONS	NOTES	MIN	MAX	UNIT	SUB GROUPS
TR <sub>TR</sub>	Transient Response: Rise Time	$V_{CC}^+ = 30V$ , $V_{CC}^- = \text{Gnd}$			1.0	$\mu\text{S}$	7, 8A, 8B
TR <sub>OS</sub>	Transient Response: Overshoot	$V_{CC}^+ = 30V$ , $V_{CC}^- = \text{Gnd}$			50	%	7, 8A, 8B
$\pm S_R$	Slew Rate: Rise/Fall	$V_{CC}^+ = 30V$ , $V_{CC}^- = \text{Gnd}$		0.1		$V/\mu\text{S}$	7, 8A, 8B
NI <sub>BB</sub>	Noise Broadband	$V_{CC}^+ = 15V$ , $V_{CC}^- = -15V$ , BW = 10Hz to 5KHz			15	$\mu\text{V}/\text{rms}$	7
NI <sub>PC</sub>	Noise Popcorn	$V_{CC}^+ = 15V$ , $V_{CC}^- = -15V$ , R <sub>s</sub> = 20K $\Omega$ BW = 10Hz to 5KHz			50	$\mu\text{V}/\text{pK}$	7
C <sub>S</sub>	Channel Separation	$V_{CC}^+ = 30V$ , $V_{CC}^- = \text{Gnd}$ R <sub>L</sub> = 2K $\Omega$		80		dB	7
		$V_{CC}^+ = 30V$ , $V_{CC}^- = \text{Gnd}$ , V <sub>IN</sub> = 1V and 16V, R <sub>L</sub> = 2K $\Omega$		80		dB	7

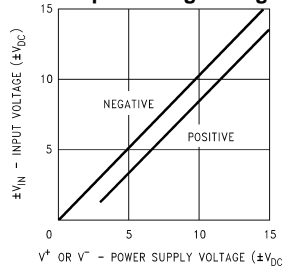
### LM124A JAN DC — Drift Values

“Delta calculations performed on JAN S and QMLV devices at group B, subgroup 5 only”

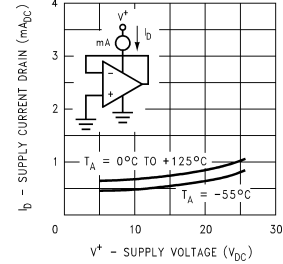
Symbol	PARAMETER	CONDITIONS	NOTES	MIN	MAX	UNIT	SUB GROUPS
$V_{io}$	Input Offset Voltage	$V_{cc}^+ = 30V, V_{cc}^- = \text{Gnd},$ $V_{cm} = +15V$		-0.5	0.5	mV	1
$\pm I_{ib}$	Input Bias Current	$V_{cc}^+ = 30V, V_{cc}^- = \text{Gnd},$ $V_{cm} = +15V$		-10	10	nA	1

Typical Performance Characteristics

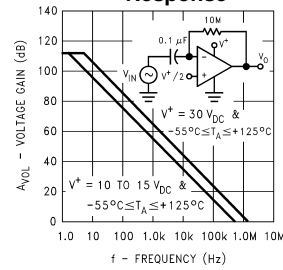
Input Voltage Range



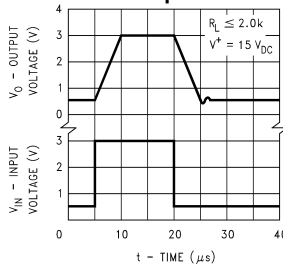
Supply Current



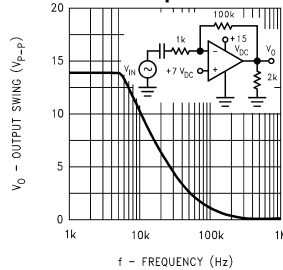
Open Loop Frequency Response



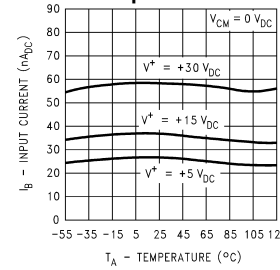
Voltage Follower Pulse Response



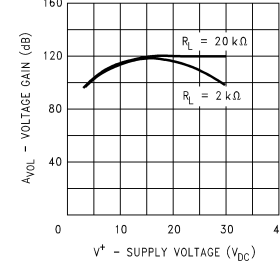
Large Signal Frequency Response



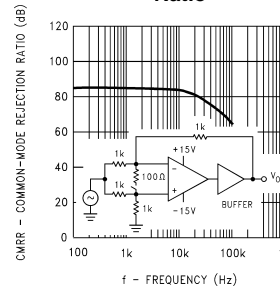
Input Current



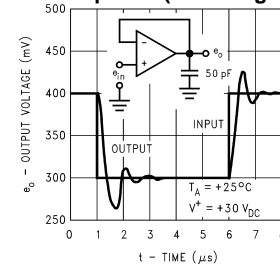
Voltage Gain



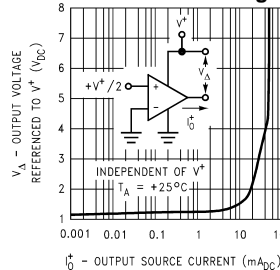
Common Mode Rejection Ratio



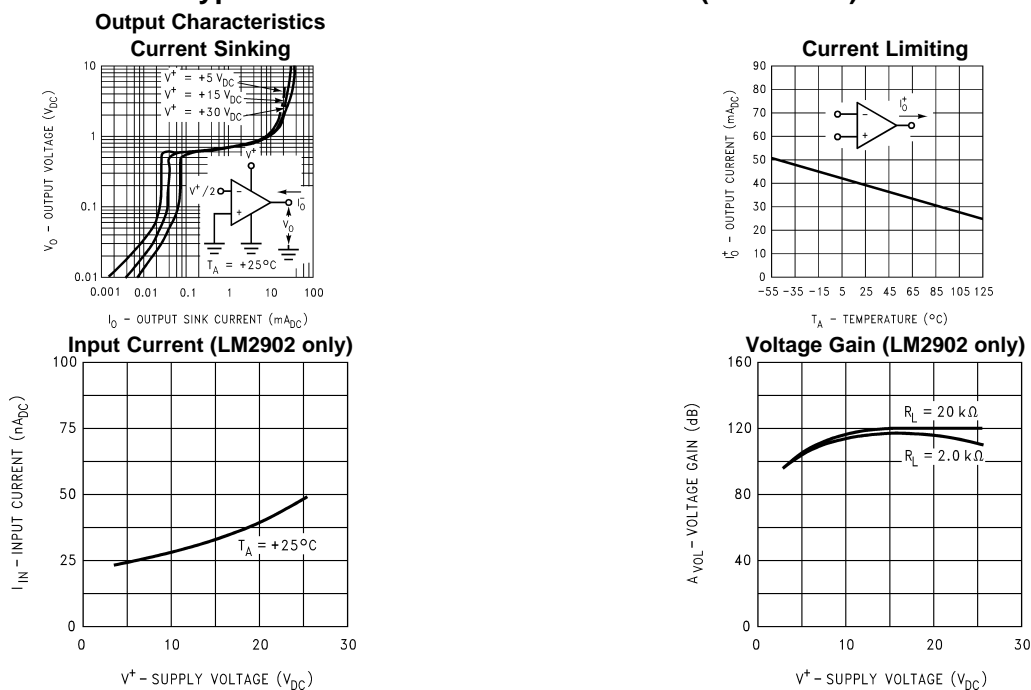
Voltage Follower Pulse Response (Small Signal)



Output Characteristics Current Sourcing



## Typical Performance Characteristics (continued)



### Application Hints

The LM124MIL series are op amps which operate with only a single power supply voltage, have true-differential inputs, and remain in the linear mode with an input common-mode voltage of  $0 V_{DC}$ . These amplifiers operate over a wide range of power supply voltage with little change in performance characteristics. At  $25^\circ C$  amplifier operation is possible down to a minimum supply voltage of  $2.3 V_{DC}$ .

The pinouts of the package have been designed to simplify PC board layouts. Inverting inputs are adjacent to outputs for all of the amplifiers and the outputs have also been placed at the corners of the package (pins 1, 7, 8, and 14).

Precautions should be taken to insure that the power supply for the integrated circuit never becomes reversed in polarity or that the unit is not inadvertently installed backwards in a test socket as an unlimited current surge through the resulting forward diode within the IC could cause fusing of the internal conductors and result in a destroyed unit.

Large differential input voltages can be easily accommodated and, as input differential voltage protection diodes are not needed, no large input currents result from large differential input voltages. The differential input voltage may be larger than  $V^+$  without damaging the device. Protection should be provided to prevent the input voltages from going negative more than  $-0.3 V_{DC}$  (at  $25^\circ C$ ). An input clamp diode with a resistor to the IC input terminal can be used.

To reduce the power supply drain, the amplifiers have a class A output stage for small signal levels which converts to class B in a large signal mode. This allows the amplifiers to both source and sink large output currents. Therefore both NPN and PNP external current boost transistors can be used to extend the power capability of the basic amplifiers. The output voltage needs to raise approximately 1 diode drop above ground to bias the on-chip vertical PNP transistor for output current sinking applications.

For ac applications, where the load is capacitively coupled to the output of the amplifier, a resistor should be used, from the output of the amplifier to ground to increase the class A bias current and prevent crossover distortion.

Where the load is directly coupled, as in dc applications, there is no crossover distortion.

Capacitive loads which are applied directly to the output of the amplifier reduce the loop stability margin. Values of 50 pF can be accommodated using the worst-case non-inverting unity gain connection. Large closed loop gains or resistive isolation should be used if larger load capacitance must be driven by the amplifier.

The bias network of the LM124MIL establishes a drain current which is independent of the magnitude of the power supply voltage over the range of from 3  $V_{DC}$  to 30  $V_{DC}$ .

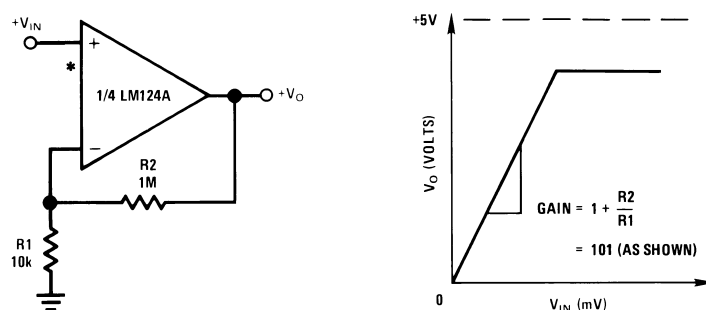
Output short circuits either to ground or to the positive power supply should be of short time duration. Units can be destroyed, not as a result of the short circuit current causing metal fusing, but rather due to the large increase in IC chip dissipation which will cause eventual failure due to excessive junction temperatures. Putting direct short-circuits on more than one amplifier at a time will increase the total IC power dissipation to destructive levels, if not properly protected with external dissipation limiting resistors in series with the output leads of the amplifiers. The larger value of output source current which is available at 25°C provides a larger output current capability at elevated temperatures (see typical performance characteristics) than a standard IC op amp.

The circuits presented in the section on typical applications emphasize operation on only a single power supply voltage. If complementary power supplies are available, all of the standard op amp circuits can be used. In general, introducing a pseudo-ground (a bias voltage reference of  $V^+/2$ ) will allow operation above and below this value in single power supply systems. Many application circuits are shown which take advantage of the wide input common-mode voltage range which includes ground. In most cases, input biasing is not required and input voltages which range to ground can easily be accommodated.

### Typical Single-Supply Applications

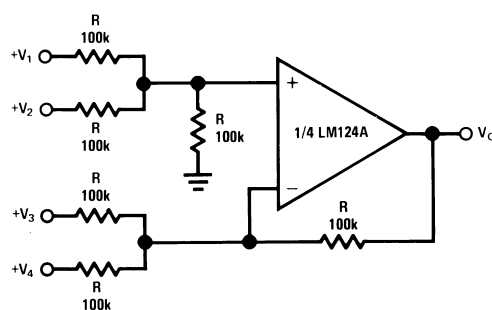
( $V^+ = 5.0 V_{DC}$ )

Figure 3. Non-Inverting DC Gain (0V Input = 0V Output)



\*R not needed due to temperature independent  $I_{IN}$

Figure 4. DC Summing Amplifier  
( $V_{IN}'S \geq 0 V_{DC}$  and  $V_O \geq V_{DC}$ )



Where:  $V_O = V_1 + V_2 - V_3 - V_4$   
 $(V_1 + V_2) \geq (V_3 + V_4)$  to keep  $V_O > 0 V_{DC}$

$(V^+ = 5.0 V_{DC})$ 

Figure 5. Power Amplifier

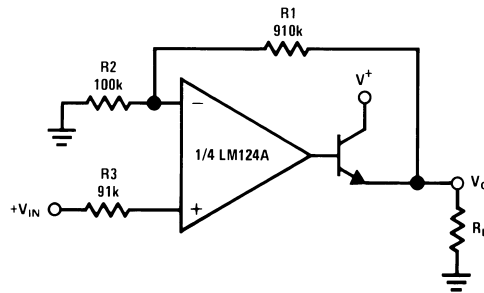

 $V_0 = 0 V_{DC}$  for  $V_{IN} = 0 V_{DC}$   
 $A_V = 10$ 

Figure 6. LED Driver

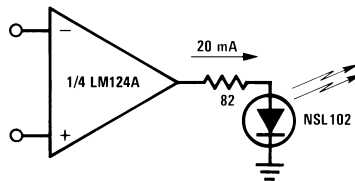
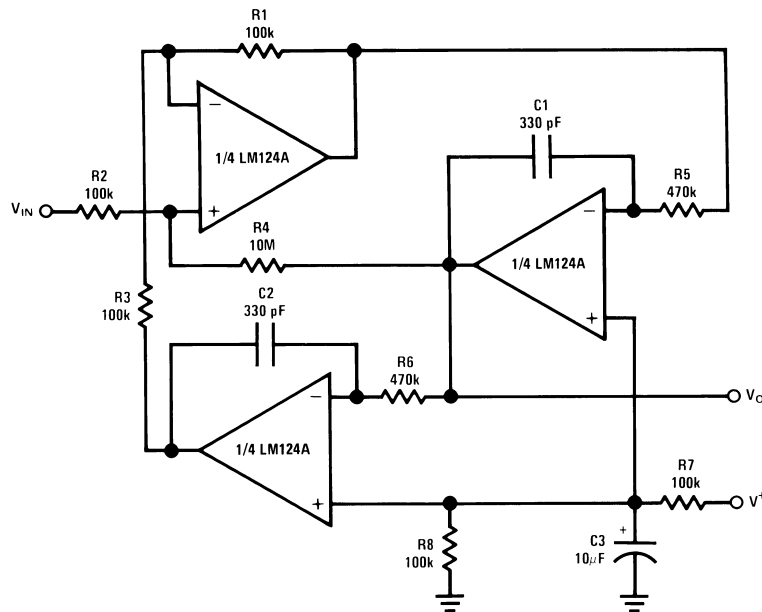


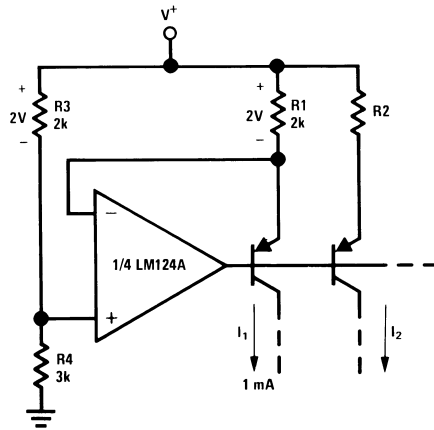
Figure 7. "BI-QUAD" RC Active Bandpass Filter


 $f_0 = 1 \text{ kHz}$   
 $Q = 50$   
 $A_V = 100$  (40 dB)



( $V^+ = 5.0 V_{DC}$ )

Figure 8. Fixed Current Sources



$$I_2 = \left( \frac{R1}{R2} \right) I_1$$

Figure 9. Lamp Driver

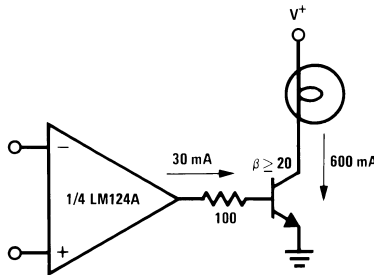
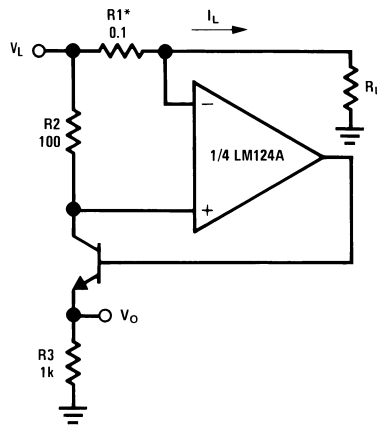


Figure 10. Current Monitor



$$V_O = \frac{1V(I_L)}{1A}$$

$$V_L \leq V^+ - 2V$$

\*(Increase R1 for  $I_L$  small)

$(V^+ = 5.0 V_{DC})$ 

Figure 11. Driving TTL

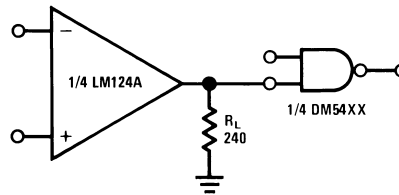


Figure 12. Voltage Follower

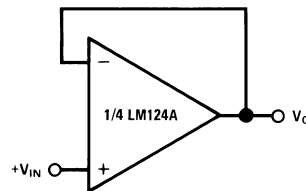


Figure 13. Pulse Generator

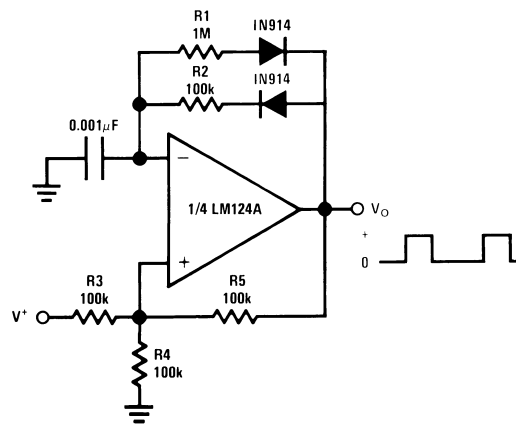
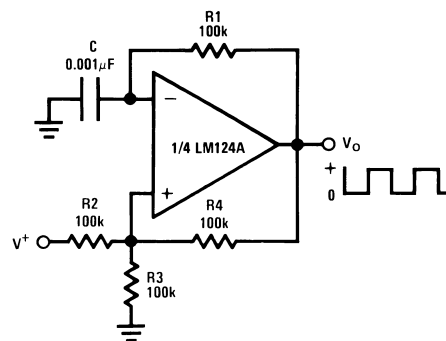


Figure 14. Squarewave Oscillator



( $V^+ = 5.0 V_{DC}$ )

Figure 15. Pulse Generator

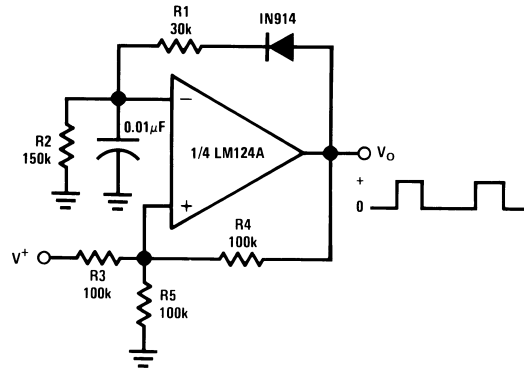
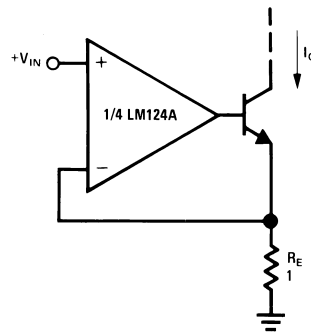
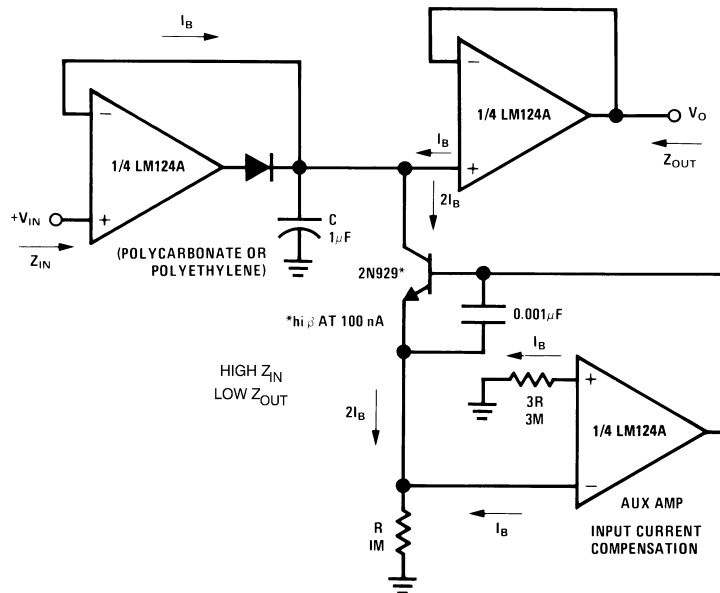


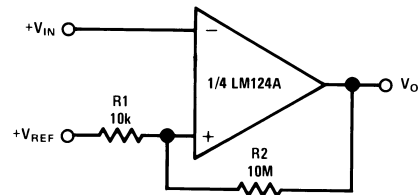
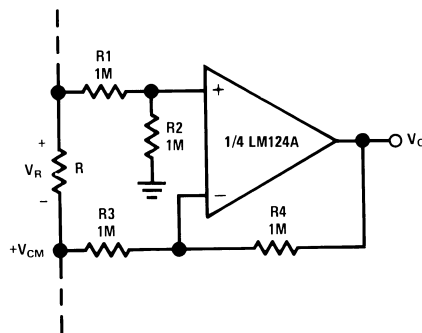
Figure 16. High Compliance Current Sink



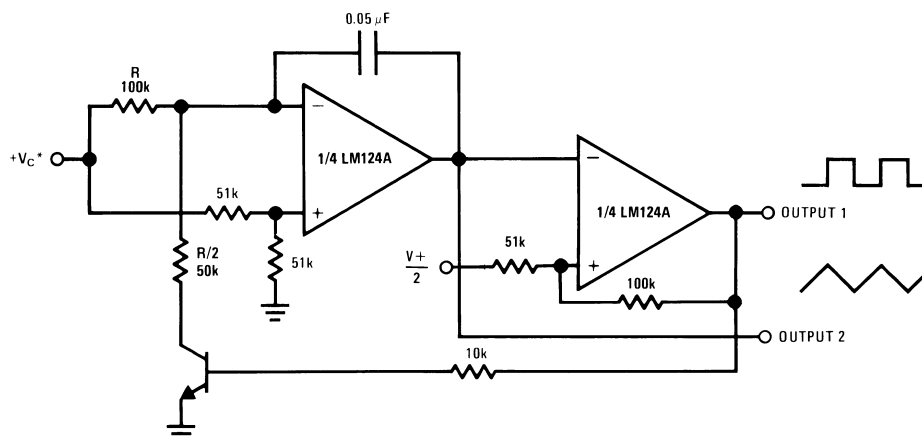
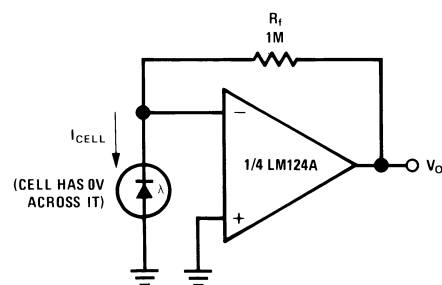
$I_o = 1 \text{ amp/volt } V_{IN}$   
(Increase  $R_E$  for  $I_o$  small)

Figure 17. Low Drift Peak Detector



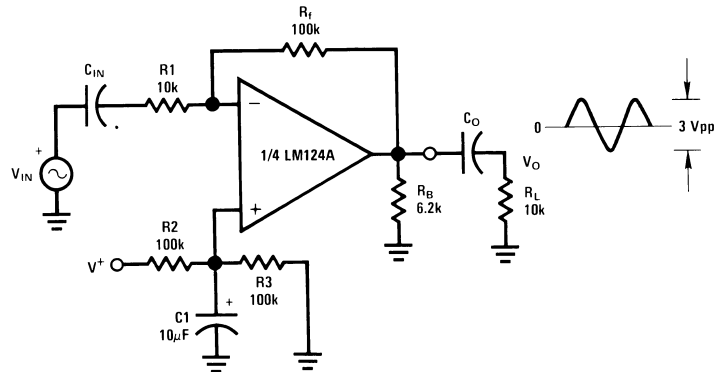
$(V^+ = 5.0 V_{DC})$ **Figure 18. Comparator with Hysteresis****Figure 19. Ground Referencing a Differential Input Signal**

$$V_O = V_R$$

**Figure 20. Voltage Controlled Oscillator Circuit**\*Wide control voltage range:  $0 V_{DC} \leq V_C \leq 2 (V^+ - 1.5 V_{DC})$ **Figure 21. Photo Voltaic-Cell Amplifier**

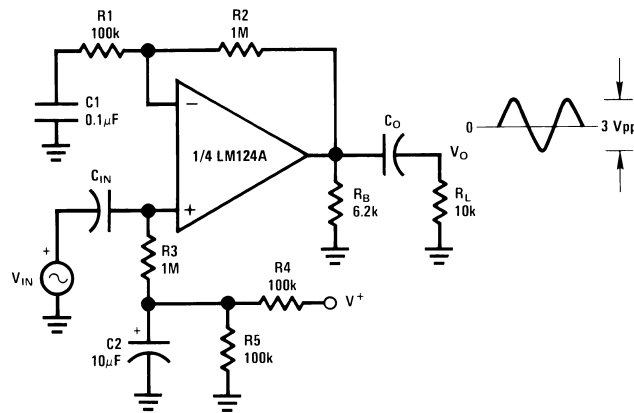
( $V^+ = 5.0 V_{DC}$ )

Figure 22. AC Coupled Inverting Amplifier



$$A_V = \frac{R_f}{R_1} \text{ (As shown, } A_V = 10)$$

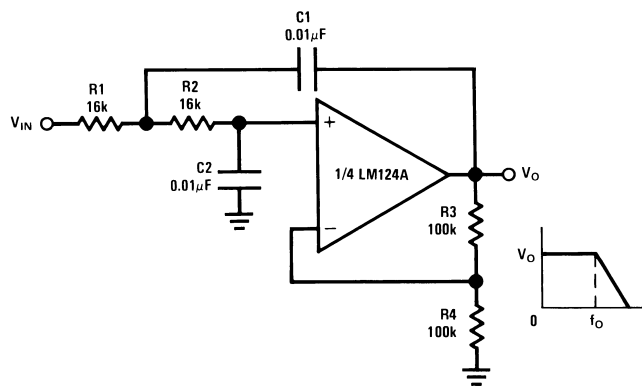
Figure 23. AC Coupled Non-Inverting Amplifier



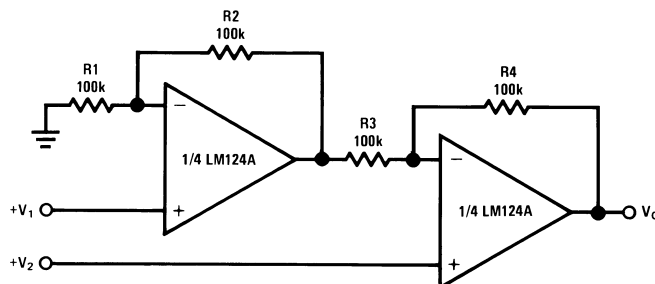
$$A_V = 1 + \frac{R_2}{R_1}$$

$A_V = 11$  (As shown)

Figure 24. DC Coupled Low-Pass RC Active Filter



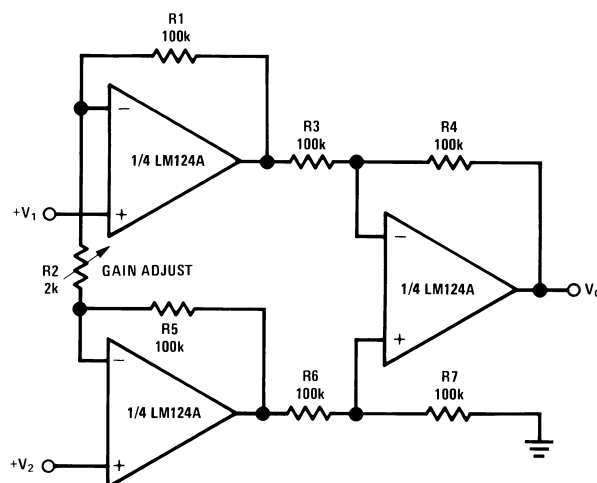
$f_0 = 1 \text{ kHz}$   
 $Q = 1$   
 $A_V = 2$

$(V^+ = 5.0 V_{DC})$ 
**Figure 25. High Input Z, DC Differential Amplifier**


For  $\frac{R1}{R2} = \frac{R4}{R3}$  (CMRR depends on this resistor ratio match)

$$V_O = 1 + \frac{R4}{R3}(V_2 - V_1)$$

As shown:  $V_O = 2(V_2 - V_1)$

**Figure 26. High Input Z Adjustable-Gain DC Instrumentation Amplifier**


If  $R1 = R5$  &  $R3 = R4 = R6 = R7$  (CMRR depends on match)

$$V_O = 1 + \frac{2R1}{R2}(V_2 - V_1)$$

As shown  $V_O = 101(V_2 - V_1)$

( $V^+ = 5.0 V_{DC}$ )

Figure 27. Using Symmetrical Amplifiers to Reduce Input Current (General Concept)

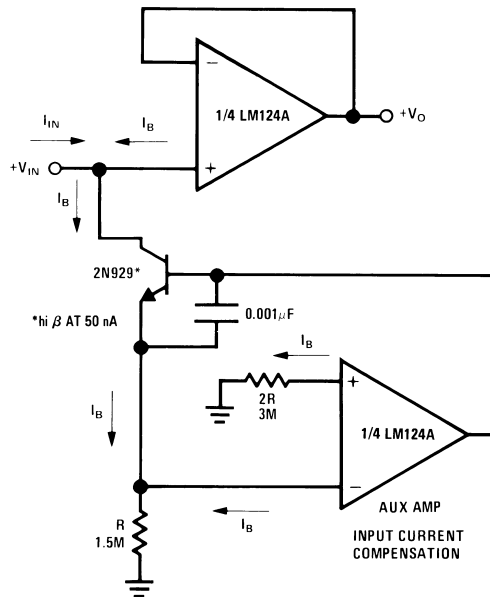
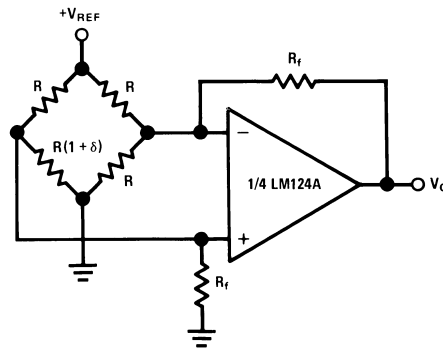
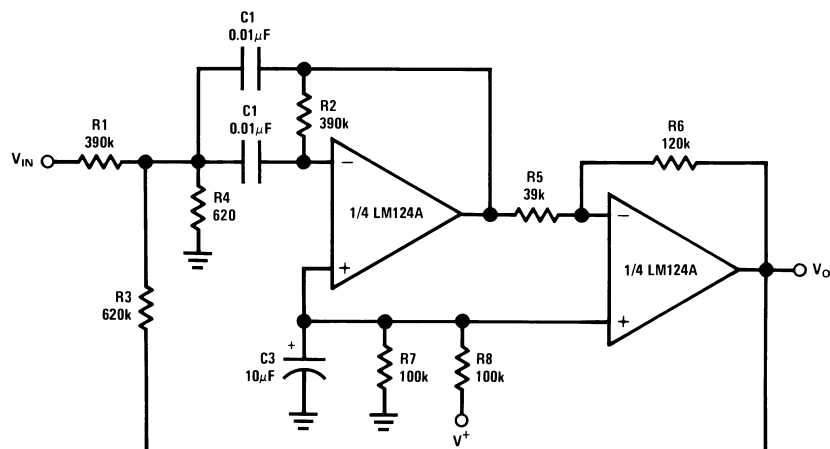


Figure 28. Bridge Current Amplifier



For  $\delta \ll 1$  and  $R_f \gg R$

$$V_o \approx V_{REF} \left( \frac{\delta}{2} \right) \frac{R_f}{R}$$

$(V^+ = 5.0 V_{DC})$ **Figure 29. Bandpass Active Filter**

$f_0 = 1 \text{ kHz}$   
 $Q = 25$



**REVISION HISTORY SECTION**

<b>Date Released</b>	<b>Revision</b>	<b>Section</b>	<b>Changes</b>
01/27/05	A	New Released, Corporate format	2 MDS data sheets converted into one Corp. data sheet format. MJLM124–X, Rev. 1B1 and MJLM124A–X, Rev. 2A1. MDS data sheets will be archived.
04/18/05	B	Update Absolute Maximum Ratings Section	Corrected typo for Supply Voltage limit From: 32Vdc or +18Vdc TO: 32Vdc or ±18Vdc. Added Cerdip package weight.
09/27/2010	C	Obsolete Data Sheet	End Of Life on Product/NSID Dec. 2008/2009

## IMPORTANT NOTICE

Texas Instruments Incorporated and its subsidiaries (TI) reserve the right to make corrections, enhancements, improvements and other changes to its semiconductor products and services per JESD46, latest issue, and to discontinue any product or service per JESD48, latest issue. Buyers should obtain the latest relevant information before placing orders and should verify that such information is current and complete. All semiconductor products (also referred to herein as "components") are sold subject to TI's terms and conditions of sale supplied at the time of order acknowledgment.

TI warrants performance of its components to the specifications applicable at the time of sale, in accordance with the warranty in TI's terms and conditions of sale of semiconductor products. Testing and other quality control techniques are used to the extent TI deems necessary to support this warranty. Except where mandated by applicable law, testing of all parameters of each component is not necessarily performed.

TI assumes no liability for applications assistance or the design of Buyers' products. Buyers are responsible for their products and applications using TI components. To minimize the risks associated with Buyers' products and applications, Buyers should provide adequate design and operating safeguards.

TI does not warrant or represent that any license, either express or implied, is granted under any patent right, copyright, mask work right, or other intellectual property right relating to any combination, machine, or process in which TI components or services are used. Information published by TI regarding third-party products or services does not constitute a license to use such products or services or a warranty or endorsement thereof. Use of such information may require a license from a third party under the patents or other intellectual property of the third party, or a license from TI under the patents or other intellectual property of TI.

Reproduction of significant portions of TI information in TI data books or data sheets is permissible only if reproduction is without alteration and is accompanied by all associated warranties, conditions, limitations, and notices. TI is not responsible or liable for such altered documentation. Information of third parties may be subject to additional restrictions.

Resale of TI components or services with statements different from or beyond the parameters stated by TI for that component or service voids all express and any implied warranties for the associated TI component or service and is an unfair and deceptive business practice. TI is not responsible or liable for any such statements.

Buyer acknowledges and agrees that it is solely responsible for compliance with all legal, regulatory and safety-related requirements concerning its products, and any use of TI components in its applications, notwithstanding any applications-related information or support that may be provided by TI. Buyer represents and agrees that it has all the necessary expertise to create and implement safeguards which anticipate dangerous consequences of failures, monitor failures and their consequences, lessen the likelihood of failures that might cause harm and take appropriate remedial actions. Buyer will fully indemnify TI and its representatives against any damages arising out of the use of any TI components in safety-critical applications.

In some cases, TI components may be promoted specifically to facilitate safety-related applications. With such components, TI's goal is to help enable customers to design and create their own end-product solutions that meet applicable functional safety standards and requirements. Nonetheless, such components are subject to these terms.

No TI components are authorized for use in FDA Class III (or similar life-critical medical equipment) unless authorized officers of the parties have executed a special agreement specifically governing such use.

Only those TI components which TI has specifically designated as military grade or "enhanced plastic" are designed and intended for use in military/aerospace applications or environments. Buyer acknowledges and agrees that any military or aerospace use of TI components which have **not** been so designated is solely at the Buyer's risk, and that Buyer is solely responsible for compliance with all legal and regulatory requirements in connection with such use.

TI has specifically designated certain components as meeting ISO/TS16949 requirements, mainly for automotive use. In any case of use of non-designated products, TI will not be responsible for any failure to meet ISO/TS16949.

### Products

Audio	<a href="http://www.ti.com/audio">www.ti.com/audio</a>
Amplifiers	<a href="http://amplifier.ti.com">amplifier.ti.com</a>
Data Converters	<a href="http://dataconverter.ti.com">dataconverter.ti.com</a>
DLP® Products	<a href="http://www.dlp.com">www.dlp.com</a>
DSP	<a href="http://dsp.ti.com">dsp.ti.com</a>
Clocks and Timers	<a href="http://www.ti.com/clocks">www.ti.com/clocks</a>
Interface	<a href="http://interface.ti.com">interface.ti.com</a>
Logic	<a href="http://logic.ti.com">logic.ti.com</a>
Power Mgmt	<a href="http://power.ti.com">power.ti.com</a>
Microcontrollers	<a href="http://microcontroller.ti.com">microcontroller.ti.com</a>
RFID	<a href="http://www.ti-rfid.com">www.ti-rfid.com</a>
OMAP Applications Processors	<a href="http://www.ti.com/omap">www.ti.com/omap</a>
Wireless Connectivity	<a href="http://www.ti.com/wirelessconnectivity">www.ti.com/wirelessconnectivity</a>

### Applications

Automotive and Transportation	<a href="http://www.ti.com/automotive">www.ti.com/automotive</a>
Communications and Telecom	<a href="http://www.ti.com/communications">www.ti.com/communications</a>
Computers and Peripherals	<a href="http://www.ti.com/computers">www.ti.com/computers</a>
Consumer Electronics	<a href="http://www.ti.com/consumer-apps">www.ti.com/consumer-apps</a>
Energy and Lighting	<a href="http://www.ti.com/energy">www.ti.com/energy</a>
Industrial	<a href="http://www.ti.com/industrial">www.ti.com/industrial</a>
Medical	<a href="http://www.ti.com/medical">www.ti.com/medical</a>
Security	<a href="http://www.ti.com/security">www.ti.com/security</a>
Space, Avionics and Defense	<a href="http://www.ti.com/space-avionics-defense">www.ti.com/space-avionics-defense</a>
Video and Imaging	<a href="http://www.ti.com/video">www.ti.com/video</a>

### TI E2E Community

[e2e.ti.com](http://e2e.ti.com)