



深圳市拓普微科技开发有限公司

SHENZHEN TOPWAY TECHNOLOGY CO., LTD.

LM3122AGG-1

LCD Module User Manual

Prepared by: Chen Date:2013-02-01	Checked by: Date:	Approved by: Date:
---	----------------------------------	-----------------------------------

Rev.	Descriptions	Release Date
0.1	Preliminary release	2010-12-27
0.2	Typing Correction	2010-12-28
0.3	Update AC Characteristics	2011-05-31
0.4	Revise LCM Viewing Direction	2012-02-01

Table of Content

1. Basic Specifications	3
1.1 Display Specifications	3
1.2 Mechanical Specifications	3
1.3 Block Diagram	3
1.4 Terminal Functions	4
2. Absolute Maximum Ratings	5
3. Electrical Characteristics	5
3.1 DC Characteristics	5
3.2 LED Backlight Circuit Characteristics	5
3.3 AC Characteristics	6
4. Optical Characteristics	7
4.1 Optical Characteristics	7
4.2 Definition	7
5. Function Specifications	9
5.1 Basic Setting	9
5.2 Resetting the LCD module	9
5.3 Display Data RAM Memory Map	10
5.4 Display Command	10
6. Design and Handling Precaution	11

1. Basic Specifications

1.1 Display Specifications

- 1) LCD Display Mode : FSTN, Negative, Transmissive
- 2) Display Color : Display Data = "1" : Light Gray (*1)
: Display Data = "0" : Dark Gray (*2)
- 3) Viewing Angle : 12 H
- 4) Driving Method : 1/32 duty, 1/5bias
- 5) Back Light : Green LED backlight

Note:

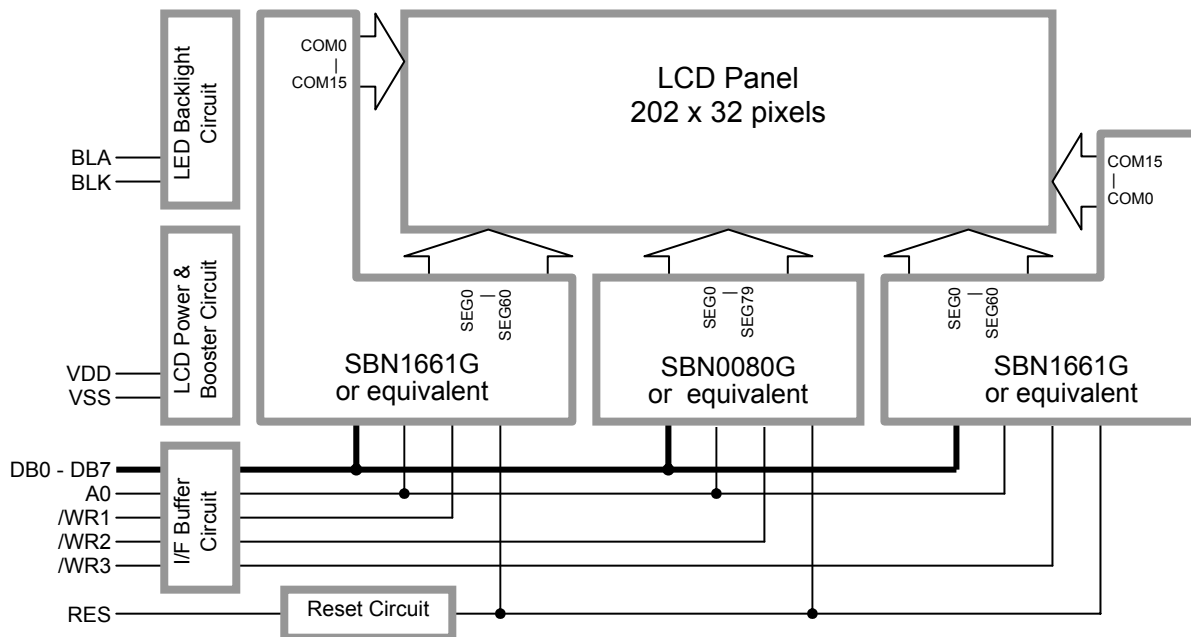
*1. Color tone may slightly change by Temperature and Driving Condition.

*2. The Color is defined as the inactive / background color

1.2 Mechanical Specifications

- 1) Outline Dimension : 246.0 x 55.2 x 12.5MAX
(see attached Outline Drawing for details)

1.3 Block Diagram



1.4 Terminal Functions

Pin No.	Pin Name	I/O	Descriptions
1	VSS	Power	Negative Power Supply, Ground (0V)
2	VDD	Power	Positive Power Supply
3	VDD		
4	A0	Input	A0 = H; DB0 – DB7 = Display Data A0 = L; DB0 – DB7 = Instruction Data
5	/WR1	Input	Write Enable Signal for left section of the LCD module
6	VDD	Power	Positive Power Supply
7	VDD		
8	/WR2	Input	Write Enable Signal for middle section of the LCD module
9	DB0	Input	Data bus for display data or instruction data
:	:		
16	DB7		
17	RES	Input	Reset signal (*2) Resetting: rising edge and falling edge of RES Normal Running: RES=Low
18	/WR3	Input	Write Enable Signal for right section of the LCD module
19	BLK	Power	Negative Power for LED backlight
20	BLA	Power	Positive Power for LED backlight

Note:

- *1. Display or instruction data could write into the LCD module's driver/controllers individually or at the same time.
- *2. Never keep RES signal at High level for more than 1ms, otherwise unexpected high current drawn will occur due to the internal data collision. It may permanently damage the LCD module.

2. Absolute Maximum Ratings

Items	Symbol	Min.	Max.	Unit	Condition
Supply Voltage	V_{DD}	0	4.3	V	$V_{SS} = 0V$
Operating Temperature	T_{OP}	0	50	°C	No Condensation
Storage Temperature	T_{ST}	-20	70	°C	No Condensation

Cautions:

Any Stresses exceeding the Absolute Maximum Ratings may cause substantial damage to the device. Functional operation of this device at other conditions beyond those listed in the specification is not implied and prolonged exposure to extreme conditions may affect device reliability.

3. Electrical Characteristics

3.1 DC Characteristics

$V_{SS}=0V, V_{DD} =3.3V, T_{OP} =25^{\circ}C$

Items	Symbol	MIN.	TYP.	MAX.	Unit	Applicable Pin
Operating Voltage	V_{DD}	3.1	3.3	3.5	V	VDD(*1)
Input High Voltage	V_{IH}	$0.8V_{DD}$	-	V_{DD}	V	A0, /WR1, /WR2, /WR3, DB0-DB7, RES
Input Low Voltage	V_{IL}	V_{SS}	-	$0.2V_{DD}$	V	
Operating Current	I_{DD}	-	4.0	11.0	mA	VDD (*2)

Note:

- *1. The variation of Operating Voltage may affect the LCD display contrast.
- *2. Normal text display

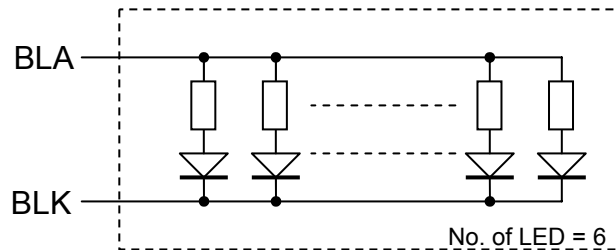
3.2 LED Backlight Circuit Characteristics

$V_{BLK}=0V, I_{f_{BLA}}=90mA, T_{OP} =25^{\circ}C$

Items	Symbol	MIN.	TYP.	MAX.	Unit	Applicable Pin
Forward Voltage	$V_{f_{BLA}}$	-	5.0	-	V	BLA
Forward Current	$I_{f_{BLA}}$	-	90	120	mA	BLA

Cautions:

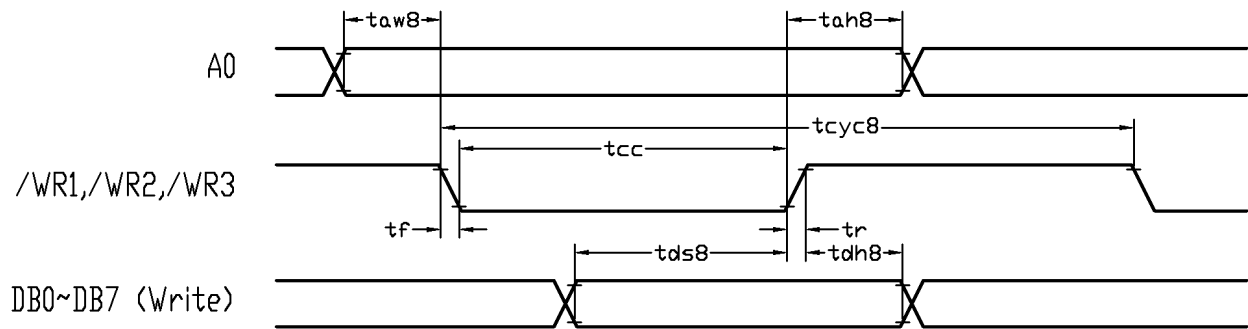
Exceeding the recommended driving current could cause substantial damage to the backlight and shorten its lifetime.



3.3 AC Characteristics

$V_{SS}=0V, V_{DD}=3.3V, T_{OP}=25^{\circ}C$

Item	Symbol	MIN.	TYP.	MAX.	Unit
Address hold time	tah8	27	-	-	ns
Address setup time	taw8	47	-	-	ns
System cycle time	tcyc8	2007	-	-	ns
Control pulse width	tcc	407	-	-	ns
Data setup time	tds8	178	-	-	ns
Data hold time	tdh8	27	-	-	ns
Rise time	tr	-	-	10	ns
Fall time	tf	-	-	10	ns



Host Write Timing Diagram

4. Optical Characteristics

4.1 Optical Characteristics

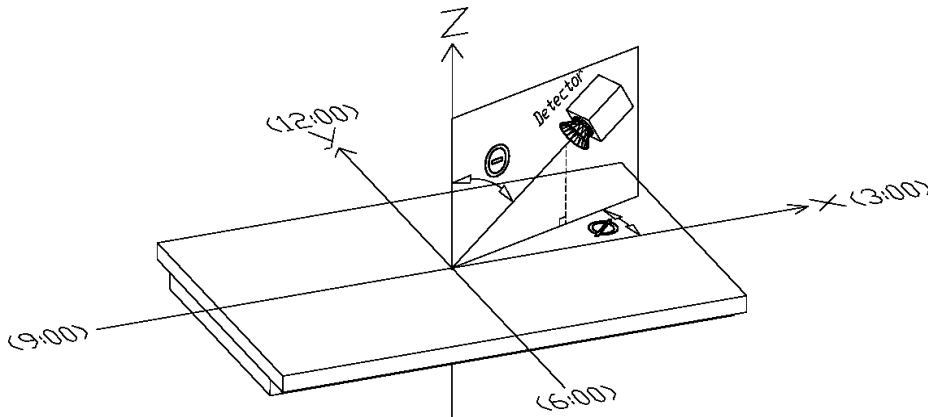
$T_{OP} = 25^{\circ}C$

Item	Symbol	MIN.	TYP.	MAX.	Unit	note
Viewing Direction	Φ	-	12:00	-	-	Vop=typ.
Viewing Angle x	$\Theta 1$	60	-	-	deg	Vop=typ.
Viewing Angle y	$\Theta 2$	60	-	-	deg	Vop=typ.
On Time	ton	-	150	-	ms	$\theta X, \theta Y = 0^{\circ}$, Vop=typ.
Off Time	toff	-	150	-	ms	$\theta X, \theta Y = 0^{\circ}$, Vop=typ.
Contrast	K	6	-	-	-	$\theta X, \theta Y = 0^{\circ}$, Vop=typ.
LCD Operating Voltage	Vop	-	7.5	-	V	$\theta X, \theta Y = 0^{\circ}$

4.2 Definition

4.2.1 Viewing Direction

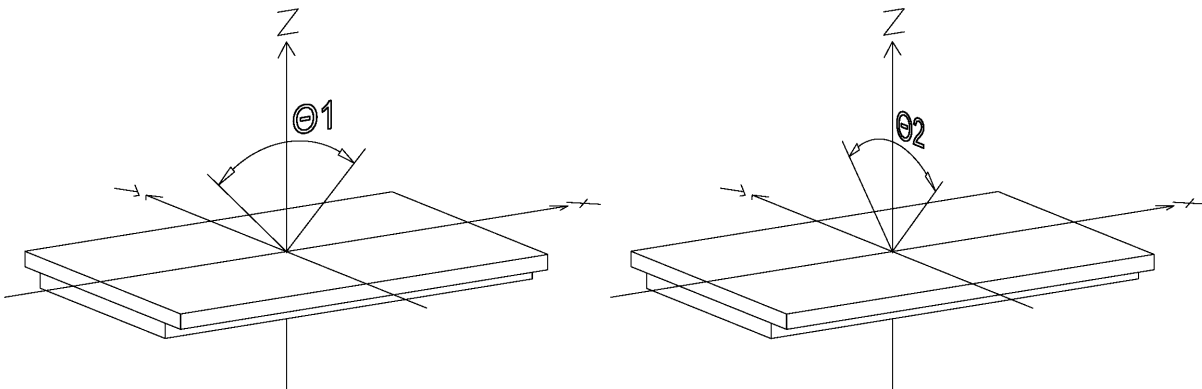
Viewing Direction = direction (Φ) that provide the best display result, when $\Theta = 30^{\circ}$



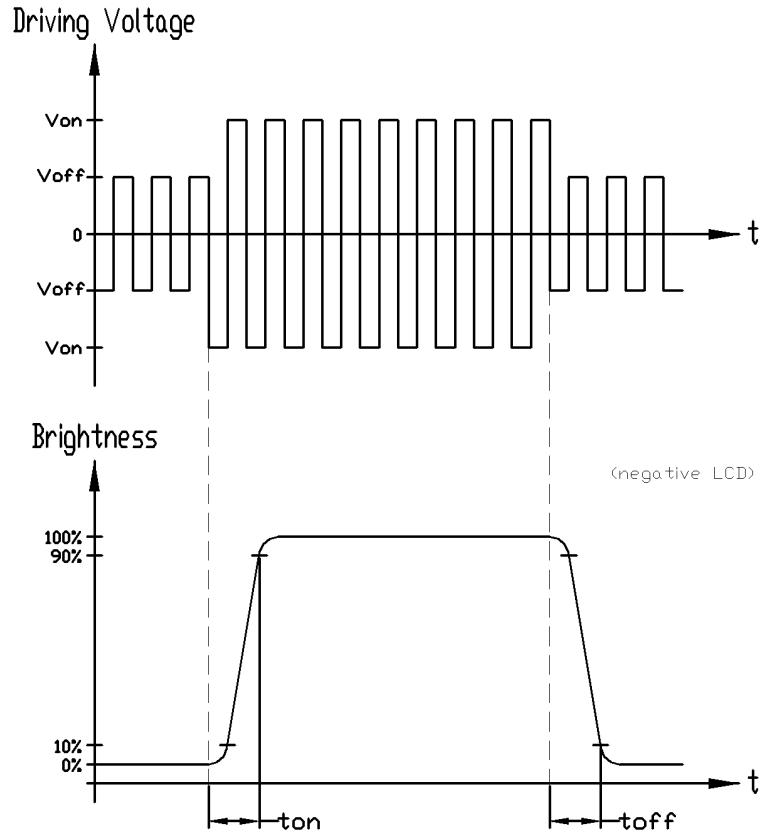
4.2.2 Viewing Angle

Viewing Angle x = total viewing angle along x-axis ($\Theta 1$)

Viewing Angle y = total viewing angle along y-axis ($\Theta 2$)



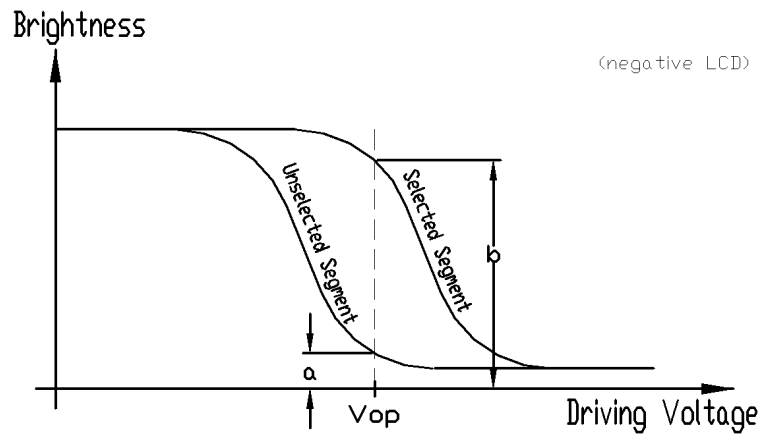
4.2.3 Response Time



4.2.4 Contrast and Vop

$$\text{Contrast (K)} = \frac{\text{Brightness of Selected Segment (b)}}{\text{Brightness of Unselected Segment (a)}}$$

Vop = the Driving Voltage producing the maximum value of K



5. Function Specifications

5.1 Basic Setting

To drive the LCD module correctly and provide normally display, please use the following setting

Select duty = 1/32
Static drive ON/OFF = OFF (Normal Driving)
ADC = 0
Display Start Line = 0
DISPLAY ON/OFF = ON
Read-Modify-Write = OFF

5.2 Resetting the LCD module

The LCD module should be initialized by the hardware reset during power on sequence.

Keep RES terminal at low level, during the power on.

After the power supply is stable, a hardware reset signal should apply to the RES terminal.

The LCD module will be initialized at the rising and falling edge of the RES signal.

For normal running, RES signal must be keep at low level

After the Hardware Reset, the LCD module controllers status will be:

(note: this is not the basic setting for normal display)

- Display ON/OFF = OFF
- Display start line register = 0
- Static drive ON/OFF = OFF (Normal Driving)
- Column address counter = 0
- Page address register = Page 3
- Select duty = 1/32
- ADC = 1
- Read-Modify-Write = OFF

Caution:

Never keep RES signal at High level for more than 1ms, otherwise unexpected high current drawn will occur due to the internal data collision. It may permanently damage the LCD module.

5.3 Display Data RAM Memory Map

Page Address	data	LCD Display (front view)		
0	D0 : D7	202x32 pixels		
1	D0 : D7			
2	D0 : D7			
3	D0 : D7			
Column Address		00h → 3Ch	00h → 4Fh	00h → 3Ch
Driver (accessed by)		/WR1	/WR2	/WR3

Note:

- *1. Display Start Line = 0
- *2. ADC = 0
- *3. The Display Data for the left section could be accessed by /WR1.
The Display Data for the middle section could be accessed by /WR2.
The Display Data for the right section could be accessed by /WR3.

5.4 Display Command

Instructions	Code									Function	Note	
	A0	DB7	DB6	DB5	DB4	DB3	DB2	DB1	DB0			
Display ON/OFF	0	1	0	1	0	1	1	1	0/1	0 = OFF 1 = ON (Display Data RAM is not affected)		
Set Display Start Line	0	1	1	0	Display Start Line (0 ~ 31)				0/1	Specifies RAM line corresponding to the top line of display		
Set Page Address	0	1	0	1	1	1	0	Page (0 ~ 3)		Set Page Address Register		
Set Column Address	0	0	Column Address (0 ~ 79)								Set Column Address Counter	
Write Display Data	1	Display Data								Write Display Data to display data RAM		
Select ADC	0	1	0	1	0	0	0	0	0/1	0 = CW output 1 = CCW output		
Static Drive ON/OFF	0	1	0	1	0	0	1	0	0/1	0 = normal drive 1 = static drive		
Select duty	0	1	0	1	0	1	0	0	0/1	0 = 1/32 duty 1 = 1/16 duty		
Read-Modify-Write	0	1	1	1	0	0	0	0	0	Read-modify-write = ON	*1	
End	0	1	1	1	0	1	1	1	0	Read-modify-write = OFF		
Reset	0	1	1	1	0	0	0	1	0	Software Reset		

Note:

- *1. Never use this command. Otherwise unexpected high current drawn will occur due to the internal data collision. It may permanently damage the LCD module.
- *2. Instruction could be write into both drivers at the same time.
- *3. For the details of the Display Command, please refer to SBN1661G datasheet.

6. Design and Handling Precaution

1. The LCD panel is made by glass. Any mechanical shock (eg. dropping from high place) will damage the LCD module.
2. Do not add excessive force on the surface of the display, which may cause the Display color change abnormally.
3. The polarizer on the LCD is easily get scratched. If possible, do not remove the LCD protective film until the last step of installation.
4. Never attempt to disassemble or rework the LCD module.
5. Only Clean the LCD with Isopropyl Alcohol or Ethyl Alcohol. Other solvents (eg. water) may damage the LCD.
6. When mounting the LCD module, make sure that it is free from twisting, warping and distortion.
7. Ensure to provide enough space (with cushion) between case and LCD panel to prevent external force adding on it, or it may cause damage to the LCD or degrade the display result.
8. Only hold the LCD module by its side. Never hold LCD module by add force on the heat seal or TAB.
9. Never add force to component of the LCD module. It may cause invisible damage or degrade of the reliability.
10. LCD module could be easily damaged by static electricity. Be careful to maintain an optimum anti-static work environment to protect the LCD module.
11. When peeling off the protective film from LCD, static charge may cause abnormal display pattern. It is normal and will resume to normal in a short while.
12. Take care and prevent get hurt by the LCD panel sharp edge.
13. Never operate the LCD module exceed the absolute maximum ratings.
14. Keep the signal line as short as possible to prevent noisy signal applying to LCD module.
15. Never apply signal to the LCD module without power supply.
16. IC chip (eg. TAB or COG) is sensitive to the light. Strong lighting environment could possibly cause malfunction. Light sealing structure casing is recommend.
17. LCD module reliability may be reduced by temperature shock.
18. When storing the LCD module, avoid exposure to the direct sunlight, high humidity, high temperature or low temperature. They may damage or degrade the LCD module.