

LM32019P2

Medium Size Graphic Type LCD Module
(FA/POS/Measuring instruments)

Features

- 14 cm [5.7"] QVGA format
- Transmissive B/W display

- Mechanically compatible with LM32019T

Specifications

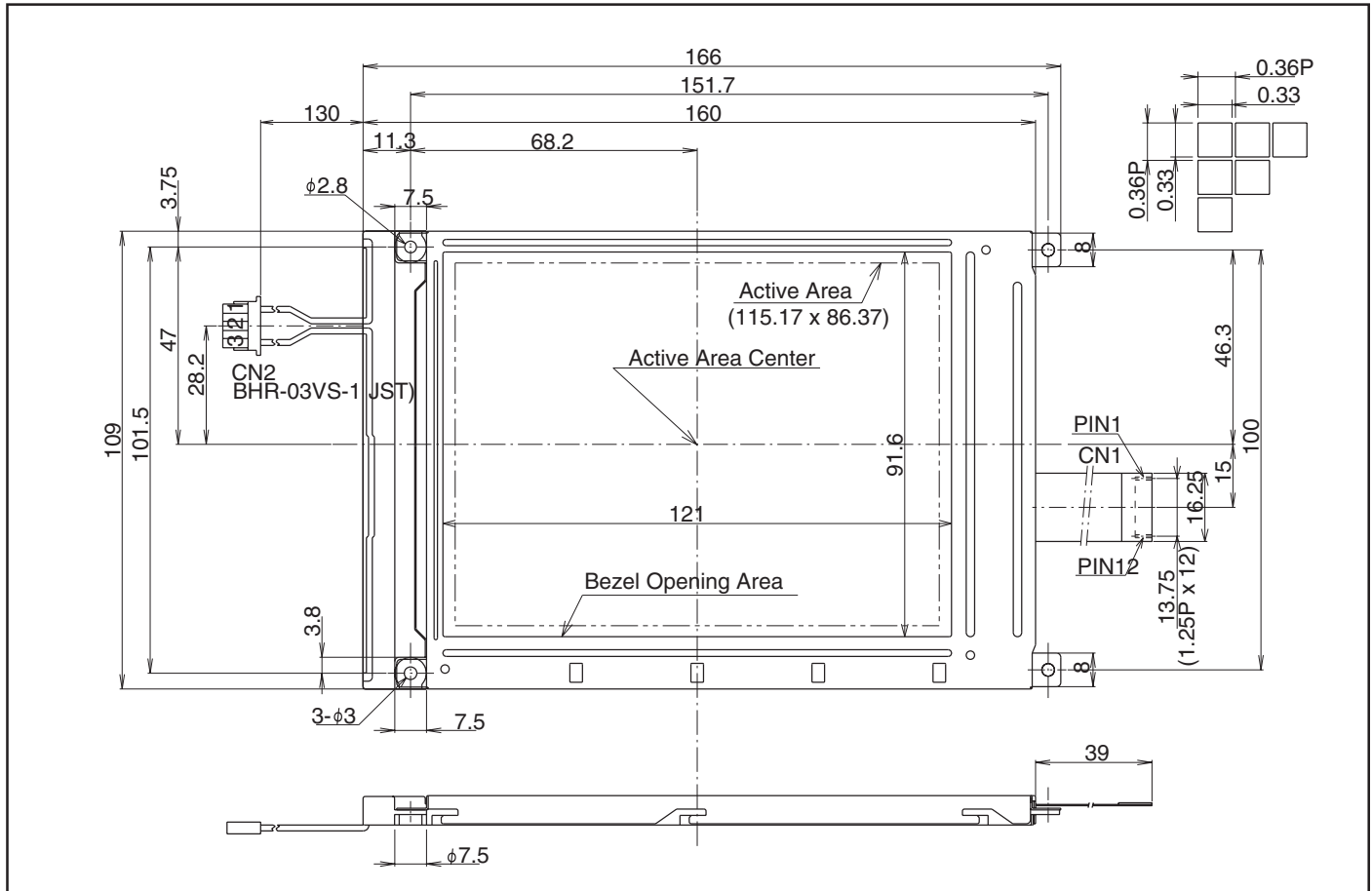
Parameter		Unit
Display size	14 [5.7]	cm ["]
Dot format (H x V)	320 x 240	dot
Dot pitch (H x V)	0.36 x 0.36	mm
Active area (H x V)	115.2 x 86.4	mm
Panel type	FSTN (Nega)	-
Panel mode	Transmissive	-
Color	B/W	-
Contrast ratio	10 : 1	-
Response time	560	ms

Parameter		Unit
Brightness	90	cd/m ²
Duty ratio	1/240	-
Backlight type	1CCFT(E)	-
Power consumption	1 206	mW
Overall dimensions (W x H x D)	160.0(166.0)*1 x 109.0 x 7.5	mm
Weight	160	g
Operating temperature	0 to +45	°C
Storage temperature	-25 to +60	°C

*1...() value ... Including mounting tabs.

Outline Dimensions

unit : mm



In the absence of confirmation by device specification sheets, SHARP takes no responsibility for any defects that may occur in using any SHARP devices shown in catalogs, data books, etc. Contact SHARP in order to obtain the latest device specification sheets before using any SHARP device. Specifications are subject to change without notice for improvement.