

# SPECIFICATION FOR APPROVAL

- ( ) Preliminary Specification
- (◆) Final Specification

|       |                       |
|-------|-----------------------|
| Title | 15.6" Full HD TFT LCD |
|-------|-----------------------|

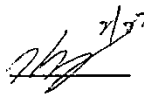
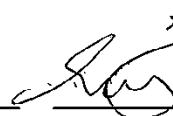

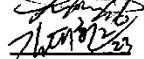
|          |      |
|----------|------|
| Customer | IMIL |
| MODEL    |      |

|          |                      |
|----------|----------------------|
| SUPPLIER | LG Display Co., Ltd. |
| *MODEL   | LP156WF4             |
| Suffix   | SLB7                 |

\*When you obtain standard approval, please use the above model name without suffix

| APPROVED BY | SIGNATURE |
|-------------|-----------|
| /           | _____     |
| /           | _____     |
| /           | _____     |

Please return 1 copy for your confirmation with your signature and comments.

| APPROVED BY          | SIGNATURE  |
|----------------------|--|
| S.R.Kim / S.Manager  |  2/23 |
| REVIEWED BY          |  |
| N.J.Seong / Manager  |  2/23 |
| PREPARED BY          |  |
| S. S. Han / Engineer |       |
| D. H. Kim / Engineer |       |

**Products Engineering Dept.**  
**LG Display Co., Ltd**

## Product Specification

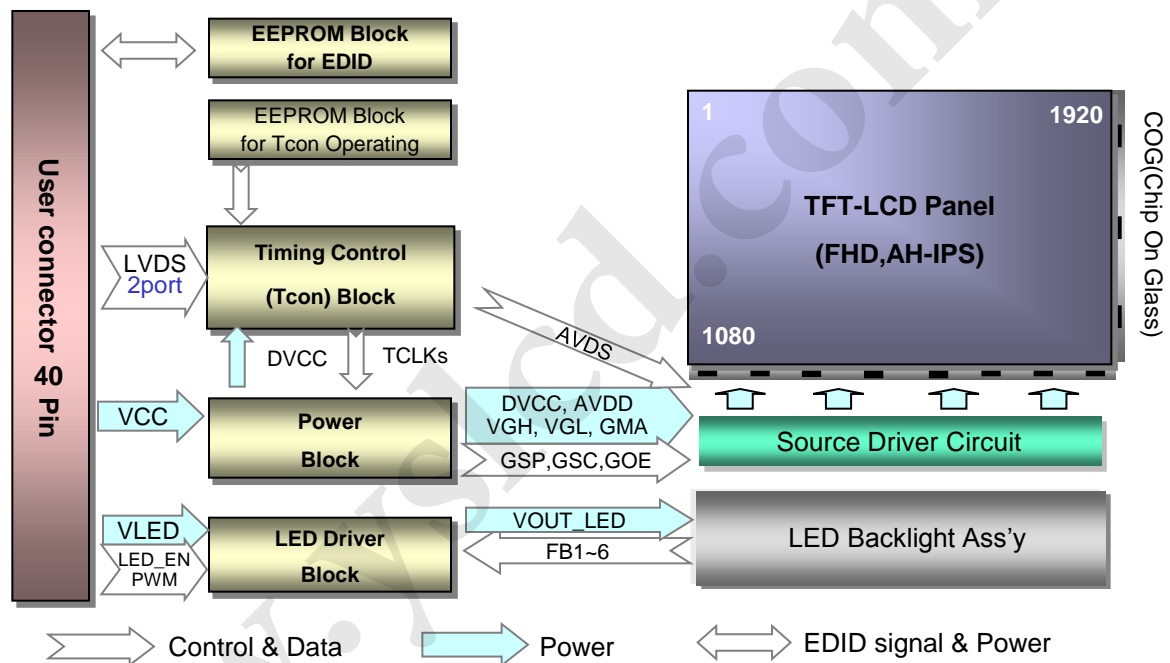
Contents

| No  | ITEM  | Page  |
|-----|---|-------|
|     | COVER   | 1     |
|     | CONTENTS  | 2     |
|     | RECORD OF REVISIONS                                     | 3     |
| 1   | GENERAL DESCRIPTION                                     | 4     |
| 2   | ABSOLUTE MAXIMUM RATINGS                                | 5     |
| 3   | ELECTRICAL SPECIFICATIONS                               |       |
| 3-1 | ELECTRICAL CHARACTREISTICS                              | 6-7   |
| 3-2 | INTERFACE CONNECTIONS                                   | 8     |
| 3-3 | LVDS SIGNAL TIMING SPECIFICATION                        | 9-10  |
| 3-4 | SIGNAL TIMING SPECIFICATIONS                            | 11    |
| 3-5 | SIGNAL TIMING WAVEFORMS                                 | 11    |
| 3-6 | COLOR INPUT DATA REFERNECE                              | 12    |
| 3-7 | POWER SEQUENCE  | 13    |
| 4   | OPTICAL SFECIFICATIONS                                  | 14-16 |
| 5   | MECHANICAL CHARACTERISTICS                              | 17-19 |
| 6   | RELIABLITY  | 20    |
| 7   | INTERNATIONAL STANDARDS                                 |       |
| 7-1 | SAFETY  | 21    |
| 7-2 | EMC   | 21    |
| 7-3 | Environment   | 21    |
| 8   | PACKING   |       |
| 8-1 | DESIGNATION OF LOT MARK                                 | 22    |
| 8-2 | PACKING FORM  | 22    |
| 9   | PRECAUTIONS   | 23-24 |
| A   | APPENDIX. Enhanced Extended Display Identification Data | 25-27 |



## 1. General Description

The LP156WF4 is a Color Active Matrix Liquid Crystal Display with an integral LED backlight system. The matrix employs a-Si Thin Film Transistor as the active element. It is a transmissive type display operating in the normally black mode. This TFT-LCD has 15.6 inches diagonally measured active display area with FHD resolution (1920 horizontal by 1080 vertical pixel array). Each pixel is divided into Red, Green and Blue sub-pixels or dots which are arranged in vertical stripes. Gray scale or the brightness of the sub-pixel color is determined with a 6-bit gray scale signal for each dot, thus, presenting a palette of more than 262,144 colors. The LP156WF4 has been designed to apply the interface method that enables low power, high speed, low EMI. The LP156WF4 is intended to support applications where thin thickness, low power are critical factors and graphic displays are important. In combination with the vertical arrangement of the sub-pixels, the LP156WF4 characteristics provide an excellent flat display for office automation products such as Notebook PC.



## General Features

|                        |   |
|------------------------|---|
| Active Screen Size     | 15.6 inches diagonal  |
| Outline Dimension      | 359.5(H, typ.) × 224.1(V, typ.) × 3.4(D,max) [mm] (with Bracket & PCB Board)  |
| Pixel Pitch            | 0.17925 mm x 0.17925 mm   |
| Pixel Format           | 1920 horiz. By 1080 vert. Pixels RGB strip arrangement                        |
| Color Depth            | 6-bit, 262,144 colors   |
| Luminance, White       | 250 cd/m <sup>2</sup> (Typ.5 point)   |
| Power Consumption      | Total 6.0 W(Typ.) Logic : 1.4 W (Typ. @ Mosaic), B/L : 4.6 W (Typ. @ VLED12V) |
| Weight                 | 330g ( Max. ) / 320g ( Typ. )   |
| Display Operating Mode | Normally Black  |
| Surface Treatment      | Anti glare treatment (3H) of the front Polarizer                              |
| RoHS Compliance        | Yes   |
| BFR / PVC / As Free    | Yes for all   |

## 2. Absolute Maximum Ratings

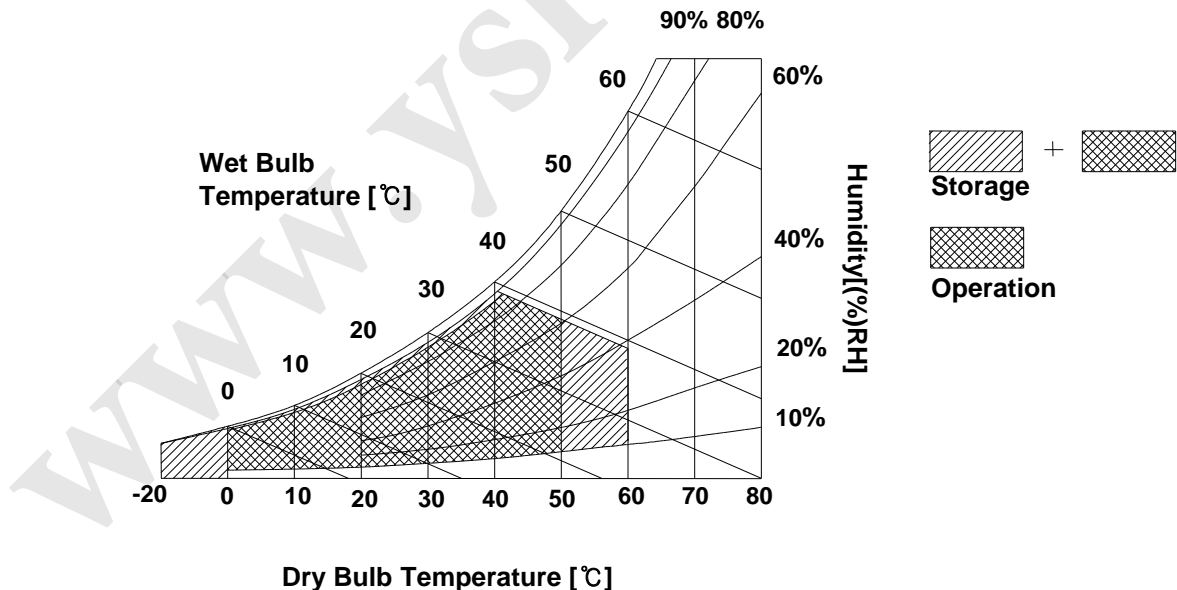
The following are maximum values which, if exceeded, may cause faulty operation or damage to the unit.

**Table 1. ABSOLUTE MAXIMUM RATINGS**

| Parameter                  | Symbol | Values |     | Units | Notes       |
|----------------------------|--------|--------|-----|-------|-------------|
|                            |        | Min    | Max |       |             |
| Power Input Voltage        | VCC    | -0.3   | 4.0 | Vdc   | at 25 ± 5°C |
| Operating Temperature      | TOP    | 0      | 50  | °C    | 1           |
| Storage Temperature        | HST    | -20    | 60  | °C    | 1           |
| Operating Ambient Humidity | HoP    | 10     | 90  | %RH   | 1           |
| Storage Humidity           | HST    | 10     | 90  | %RH   | 1           |

Note : 1. Temperature and relative humidity range are shown in the figure below.  
Wet bulb temperature should be 39°C Max, and no condensation of water.

Note : 2. Storage Condition is guaranteed under packing condition.



## Product Specification

### 3. Electrical Specifications

#### 3-1. Electrical Characteristics

The LP156WF4 requires two power inputs. The first logic is employed to power the LCD electronics and to drive the TFT array and liquid crystal. The second backlight is the input about LED BL with LED Driver.

**Table 2. ELECTRICAL CHARACTERISTICS**

| Parameter                      | Symbol                | Values |      |      | Unit | Notes |
|--------------------------------|-----------------------|--------|------|------|------|-------|
|                                |                       | Min    | Typ  | Max  |      |       |
| LOGIC :                        |                       |        |      |      |      |       |
| Power Supply Input Voltage     | V <sub>CC</sub>       | 3.0    | 3.3  | 3.6  | V    | 1     |
| Power Supply Input Current     | I <sub>CC</sub>       | -      | 430  | 495  | mA   | 2     |
| Power Consumption              | P <sub>CC</sub>       | -      | 1.4  | 1.6  | W    | 2     |
| Power Supply Inrush Current    | I <sub>CC_P</sub>     | -      | -    | 1500 | mA   | 3     |
| LVDS Impedance                 | Z <sub>LVDS</sub>     | 90     | 100  | 110  | Ω    | 4     |
| BACKLIGHT : ( with LED Driver) |                       |        |      |      |      |       |
| LED Power Input Voltage        | V <sub>LED</sub>      | 6.0    | 12.0 | 21.0 | V    | 5     |
| LED Power Input Current        | I <sub>LED</sub>      | -      | 385  | 424  | mA   | 6     |
| LED Power Consumption          | P <sub>LED</sub>      | -      | 4.6  | 5.1  | W    | 6     |
| LED Power Inrush Current       | I <sub>LED_P</sub>    | -      | -    | 1500 | mA   | 7     |
| PWM Duty Ratio                 |                       | 5      | -    | 100  | %    | 8     |
| PWM Jitter                     | -                     | 0      | -    | 0.2  | %    | 9     |
| PWM Impedance                  | Z <sub>PWM</sub>      | 20     | 40   | 60   | kΩ   |       |
| PWM Frequency                  | F <sub>PWM</sub>      | 200    | -    | 1000 | Hz   | 10    |
| PWM High Level Voltage         | V <sub>PWM_H</sub>    | 3.0    | -    | 5.3  | V    |       |
| PWM Low Level Voltage          | V <sub>PWM_L</sub>    | 0      | -    | 0.3  | V    |       |
| LED_EN Impedance               | Z <sub>PWM</sub>      | 20     | 40   | 60   | kΩ   |       |
| LED_EN High Voltage            | V <sub>LED_EN_H</sub> | 3.0    | -    | 5.3  | V    |       |
| LED_EN Low Voltage             | V <sub>LED_EN_L</sub> | 0      | -    | 0.3  | V    |       |
| Life Time                      |                       | 12,000 | -    | -    | Hrs  | 11    |

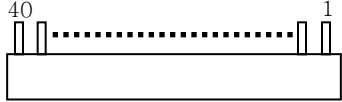


## Product Specification

### 3-2. Interface Connections

This LCD employs two interface connections, a 40 pin connector used for the module electronics interface and the other connector used for the integral backlight system.

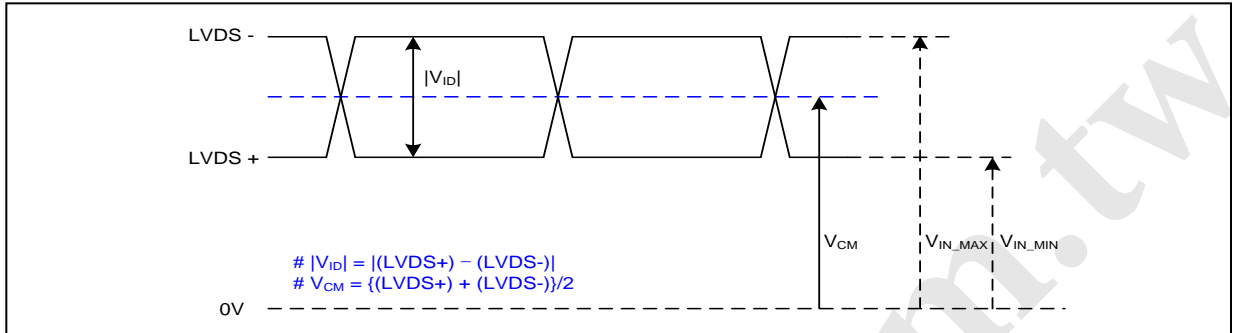
**Table 3. MODULE CONNECTOR PIN CONFIGURATION (CN1)**

| Pin | Symbol     | Description                            | Notes   |
|-----|------------|--|---|
| 1   | NC         | No Connection                          | <b>[Interface Chip]</b><br>1. LCD :<br>SiW, SW0636A (LCD Controller)<br>Including LVDS Receiver.<br>2. System : SiW LVDSRx or equivalent<br>* Pin to Pin compatible with LVDS |
| 2   | VCC        | LCD Logic and driver power (3.3V Typ.) |   |
| 3   | VCC        | LCD Logic and driver power (3.3V Typ.) |   |
| 4   | V EEDID    | DDC Power (3.3V)                       |   |
| 5   | NC         | No Connection                          |   |
| 6   | Clk EEDID  | DDC Clock                              |   |
| 7   | DATA EEDID | DDC Data                               |   |
| 8   | ORX0-      | Negative LVDS differential data input  | <b>[Connector]</b><br>UJU IS050-L40B-C10<br>LSMtron GT05Q-40S-H10 or equivalent   |
| 9   | ORX0+      | Positive LVDS differential data input  |   |
| 10  | GND        | High Speed Ground                      | <b>[Mating Connector]</b><br>20453-040T-## series or equivalent   |
| 11  | ORX1-      | Negative LVDS differential data input  |   |
| 12  | ORX1+      | Positive LVDS differential data input  | <b>[Connector pin arrangement]</b>  |
| 13  | GND        | High Speed Ground                      |   |
| 14  | ORX2-      | Negative LVDS differential data input  |    |
| 15  | ORX2+      | Positive LVDS differential data input  |   |
| 16  | GND        | High Speed Ground                      | [LCD Module Rear View]  |
| 17  | ORXC-      | Negative LVDS differential clock input |   |
| 18  | ORXC+      | Positive LVDS differential clock input |   |
| 19  | GND        | High Speed Ground                      |   |
| 20  | ERX0-      | Negative LVDS differential data input  |   |
| 21  | ERX0+      | Positive LVDS differential data input  |   |
| 19  | GND        | High Speed Ground                      |   |
| 23  | ERX1-      | Negative LVDS differential data input  |   |
| 24  | ERX1+      | Positive LVDS differential data input  |   |
| 19  | GND        | High Speed Ground                      |   |
| 26  | ERX2-      | Negative LVDS differential data input  |   |
| 27  | ERX2+      | Positive LVDS differential data input  |   |
| 19  | GND        | High Speed Ground                      |   |
| 29  | ERXC-      | Negative LVDS differential clock input |   |
| 30  | ERXC+      | Positive LVDS differential clock input |   |
| 31  | GND        | LED Backlight Ground                   |   |
| 32  | GND        | LED Backlight Ground                   |   |
| 33  | GND        | LED Backlight Ground                   |   |
| 34  | NC         | No Connection                          |   |
| 35  | PWM        | System PWM Signal input for dimming    |   |
| 36  | LED_EN     | LED Backlight On/Off                   |   |
| 37  | NC         | No Connection                          |   |
| 38  | VLED       | LED Backlight Power (12V Typ.)         |   |
| 39  | VLED       | LED Backlight Power (12V Typ.)         |   |
| 40  | VLED       | LED Backlight Power (12V Typ.)         |   |



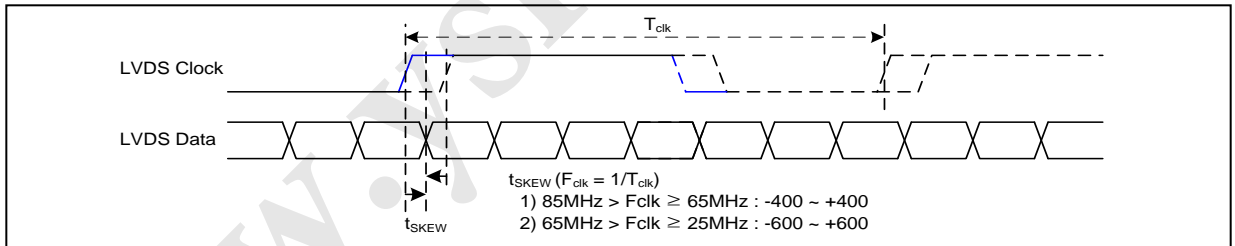
### 3-3. LVDS Signal Timing Specifications

#### 3-3-1. DC Specification



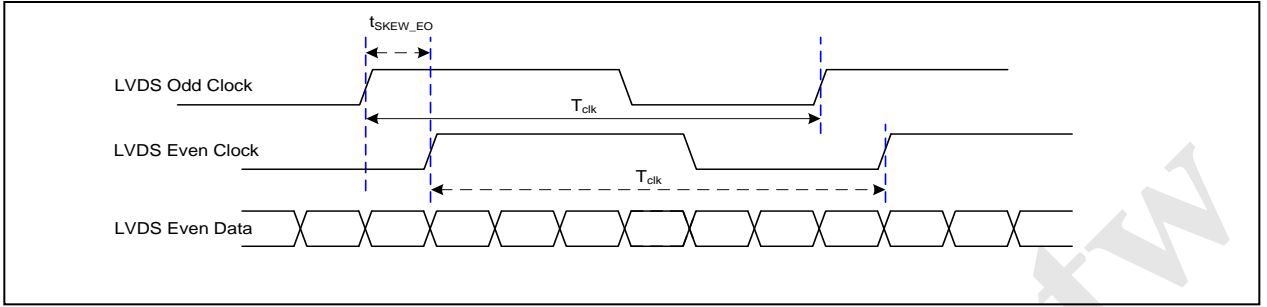
| Description               | Symbol     | Min | Max | Unit | Notes |
|---------------------------|------------|-----|-----|------|-------|
| LVDS Differential Voltage | $ V_{ID} $ | 100 | 600 | mV   | -     |
| LVDS Common mode Voltage  | $V_{CM}$   | 0.6 | 1.8 | V    | -     |
| LVDS Input Voltage Range  | $V_{IN}$   | 0.3 | 2.1 | V    | -     |

#### 3-3-2. AC Specification

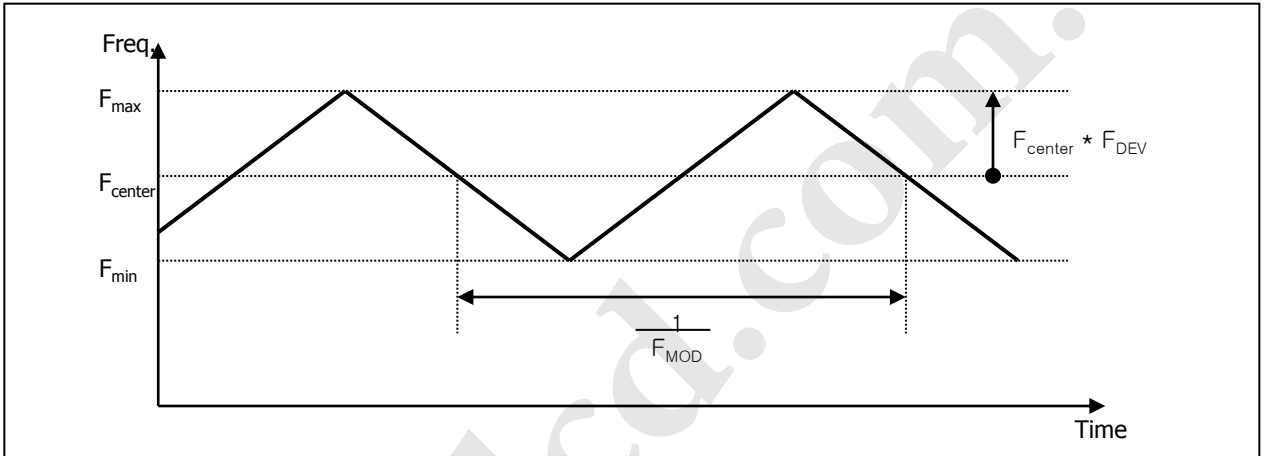


| Description  | Symbol         | Min   | Max     | Unit      | Notes                        |
|--|----------------|-------|---------|-----------|------------------------------|
| LVDS Clock to Data Skew Margin                         | $t_{SKEW}$     | - 400 | + 400   | ps        | $85MHz > F_{clk} \geq 65MHz$ |
|  | $t_{SKEW}$     | - 600 | + 600   | ps        | $65MHz > F_{clk} \geq 25MHz$ |
| LVDS Clock to Clock Skew Margin (Even to Odd)          | $t_{SKEW\_EO}$ | - 1/7 | + 1/7   | $T_{clk}$ | -                            |
| Maximum deviation of input clock frequency during SSC  | $F_{DEV}$      | -     | $\pm 3$ | %         | -                            |
| Maximum modulation frequency of input clock during SSC | $F_{MOD}$      | -     | 200     | KHz       | -                            |

**Product Specification**



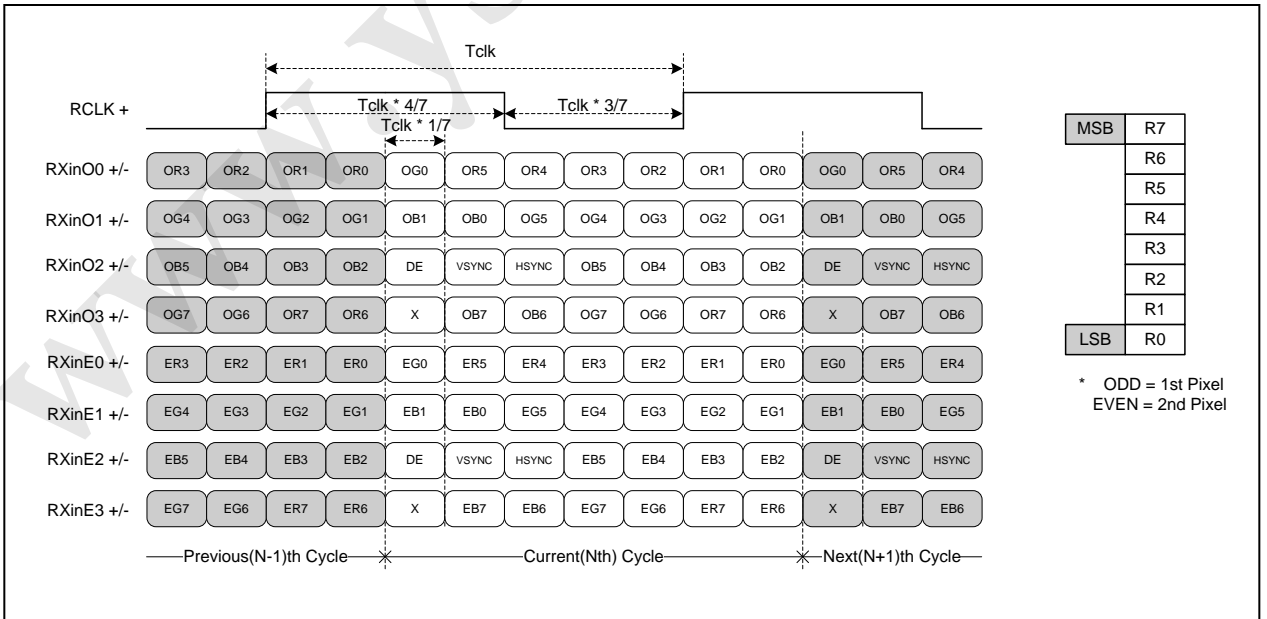
< Clock skew margin between channel >



< Spread Spectrum >

**3-3-3. Data Format**

1) LVDS 2 Port



< LVDS Data Format >

## Product Specification

### 3-4. Signal Timing Specifications

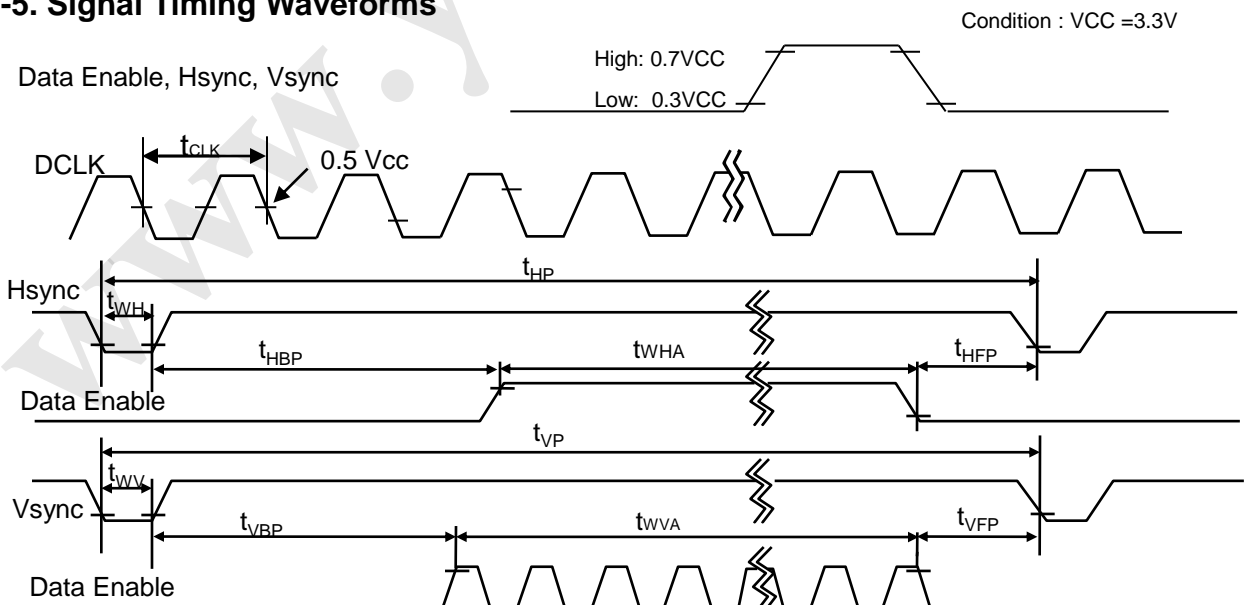
This is the signal timing required at the input of the User connector. All of the interface signal timing should be satisfied with the following specifications and specifications of LVDS Tx/Rx for its proper operation.

**Table 6. TIMING TABLE**

| ITEM        | Symbol                 | Min       | Typ  | Max  | Unit | Note |                         |
|-------------|------------------------|-----------|------|------|------|------|-------------------------|
| DCLK        | Frequency              | $f_{CLK}$ | 68.6 | 74.5 | 77.3 | MHz  | LVDS 2 port<br>( 60Hz ) |
| Hsync       | Period                 | $t_{HP}$  | 1032 | 1104 | 1138 | tCLK |                         |
|             | Width                  | $t_{WH}$  | 32   | 36   | 36   |      |                         |
|             | Width-Active           | $t_{WHA}$ | 960  | 960  | 960  |      |                         |
| Vsync       | Period                 | $t_{VP}$  | 1108 | 1124 | 1132 | tHP  |                         |
|             | Width                  | $t_{WV}$  | 5    | 5    | 5    |      |                         |
|             | Width-Active           | $t_{WVA}$ | 1080 | 1080 | 1080 |      |                         |
| Data Enable | Horizontal back porch  | $t_{HBP}$ | 24   | 84   | 90   | tCLK |                         |
|             | Horizontal front porch | $t_{HFP}$ | 16   | 24   | 52   |      |                         |
|             | Vertical back porch    | $t_{VBP}$ | 20   | 36   | 38   | tHP  |                         |
|             | Vertical front porch   | $t_{VFP}$ | 3    | 3    | 9    |      |                         |

**Appendix)** all reliabilities are specified for timing specification based on refresh rate of 60Hz. However, LP156WF4 has a good actual performance even at lower refresh rate (e.g. 40Hz or 50Hz) for power saving mode, whereas LP156WF4 is secured only for function under lower refresh rate. **60Hz at Normal mode, 50Hz, 40Hz at Power save mode. Don't care Flicker level (power save mode).**

### 3-5. Signal Timing Waveforms



## Product Specification

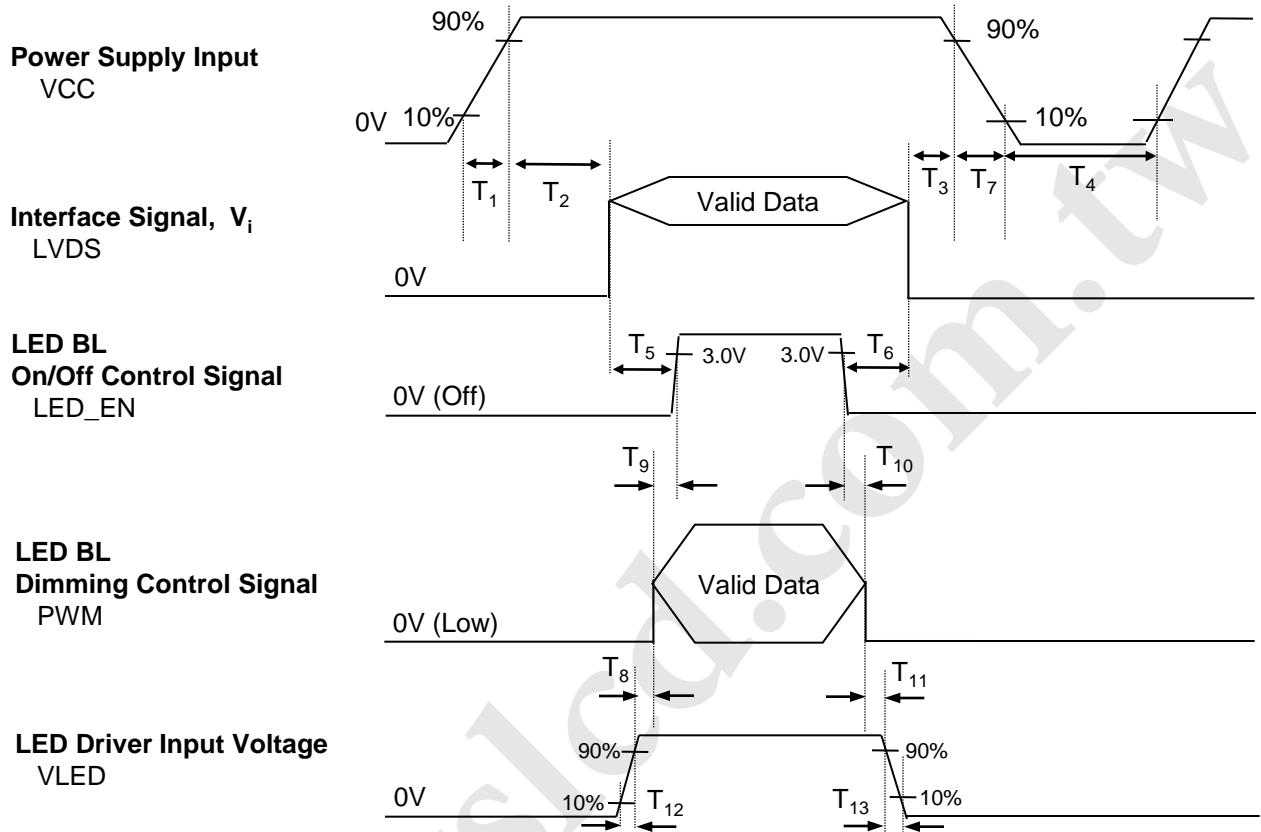
**3-6. Color Input Data Reference**

The brightness of each primary color (red, green and blue) is based on the 6-bit gray scale data input for the color ; the higher the binary input, the brighter the color. The table below provides a reference for color versus data input.

**Table 5. COLOR DATA REFERENCE**

| Color       |            | Input Color Data |    |    |    |    |    |       |    |     |    |    |    |      |    |     |    |     |    |  |  |  |  |
|-------------|------------|------------------|----|----|----|----|----|-------|----|-----|----|----|----|------|----|-----|----|-----|----|--|--|--|--|
|             |            | RED              |    |    |    |    |    | GREEN |    |     |    |    |    | BLUE |    |     |    |     |    |  |  |  |  |
|             |            | MSB              |    |    |    |    |    | LSB   |    | MSB |    |    |    |      |    | LSB |    | MSB |    |  |  |  |  |
|             |            | R5               | R4 | R3 | R2 | R1 | R0 | G5    | G4 | G3  | G2 | G1 | G0 | B5   | B4 | B3  | B2 | B1  | B0 |  |  |  |  |
| Basic Color | Black      | 0                | 0  | 0  | 0  | 0  | 0  | 0     | 0  | 0   | 0  | 0  | 0  | 0    | 0  | 0   | 0  | 0   | 0  |  |  |  |  |
|             | Red        | 1                | 1  | 1  | 1  | 1  | 1  | 0     | 0  | 0   | 0  | 0  | 0  | 0    | 0  | 0   | 0  | 0   | 0  |  |  |  |  |
|             | Green      | 0                | 0  | 0  | 0  | 0  | 0  | 1     | 1  | 1   | 1  | 1  | 1  | 0    | 0  | 0   | 0  | 0   | 0  |  |  |  |  |
|             | Blue       | 0                | 0  | 0  | 0  | 0  | 0  | 0     | 0  | 0   | 0  | 0  | 0  | 1    | 1  | 1   | 1  | 1   | 1  |  |  |  |  |
|             | Cyan       | 0                | 0  | 0  | 0  | 0  | 0  | 1     | 1  | 1   | 1  | 1  | 1  | 1    | 1  | 1   | 1  | 1   | 1  |  |  |  |  |
|             | Magenta    | 1                | 1  | 1  | 1  | 1  | 1  | 0     | 0  | 0   | 0  | 0  | 0  | 1    | 1  | 1   | 1  | 1   | 1  |  |  |  |  |
|             | Yellow     | 1                | 1  | 1  | 1  | 1  | 1  | 1     | 1  | 1   | 1  | 1  | 1  | 0    | 0  | 0   | 0  | 0   | 0  |  |  |  |  |
|             | White      | 1                | 1  | 1  | 1  | 1  | 1  | 1     | 1  | 1   | 1  | 1  | 1  | 1    | 1  | 1   | 1  | 1   | 1  |  |  |  |  |
| RED         | RED (00)   | 0                | 0  | 0  | 0  | 0  | 0  | 0     | 0  | 0   | 0  | 0  | 0  | 0    | 0  | 0   | 0  | 0   | 0  |  |  |  |  |
|             | RED (01)   | 0                | 0  | 0  | 0  | 0  | 1  | 0     | 0  | 0   | 0  | 0  | 0  | 0    | 0  | 0   | 0  | 0   | 0  |  |  |  |  |
|             | ...        | ...              |    |    |    |    |    | ...   |    |     |    |    |    | ...  |    |     |    |     |    |  |  |  |  |
|             | RED (62)   | 1                | 1  | 1  | 1  | 1  | 0  | 0     | 0  | 0   | 0  | 0  | 0  | 0    | 0  | 0   | 0  | 0   | 0  |  |  |  |  |
|             | RED (63)   | 1                | 1  | 1  | 1  | 1  | 1  | 0     | 0  | 0   | 0  | 0  | 0  | 0    | 0  | 0   | 0  | 0   | 0  |  |  |  |  |
| GREEN       | GREEN (00) | 0                | 0  | 0  | 0  | 0  | 0  | 0     | 0  | 0   | 0  | 0  | 0  | 0    | 0  | 0   | 0  | 0   | 0  |  |  |  |  |
|             | GREEN (01) | 0                | 0  | 0  | 0  | 0  | 0  | 0     | 0  | 0   | 0  | 0  | 1  | 0    | 0  | 0   | 0  | 0   | 0  |  |  |  |  |
|             | ...        | ...              |    |    |    |    |    | ...   |    |     |    |    |    | ...  |    |     |    |     |    |  |  |  |  |
|             | GREEN (62) | 0                | 0  | 0  | 0  | 0  | 0  | 1     | 1  | 1   | 1  | 1  | 0  | 0    | 0  | 0   | 0  | 0   | 0  |  |  |  |  |
|             | GREEN (63) | 0                | 0  | 0  | 0  | 0  | 0  | 1     | 1  | 1   | 1  | 1  | 1  | 0    | 0  | 0   | 0  | 0   | 0  |  |  |  |  |
| BLUE        | BLUE (00)  | 0                | 0  | 0  | 0  | 0  | 0  | 0     | 0  | 0   | 0  | 0  | 0  | 0    | 0  | 0   | 0  | 0   | 0  |  |  |  |  |
|             | BLUE (01)  | 0                | 0  | 0  | 0  | 0  | 0  | 0     | 0  | 0   | 0  | 0  | 0  | 0    | 0  | 0   | 0  | 0   | 1  |  |  |  |  |
|             | ...        | ...              |    |    |    |    |    | ...   |    |     |    |    |    | ...  |    |     |    |     |    |  |  |  |  |
|             | BLUE (62)  | 0                | 0  | 0  | 0  | 0  | 0  | 0     | 0  | 0   | 0  | 0  | 0  | 1    | 1  | 1   | 1  | 1   | 0  |  |  |  |  |
|             | BLUE (63)  | 0                | 0  | 0  | 0  | 0  | 0  | 0     | 0  | 0   | 0  | 0  | 0  | 1    | 1  | 1   | 1  | 1   | 1  |  |  |  |  |

### 3-7. Power Sequence


**Table 6. POWER SEQUENCE TABLE**

| Logic Parameter | Value |      |      | Units | LED Parameter | Value |      |      | Units |
|-----------------|-------|------|------|-------|---------------|-------|------|------|-------|
|                 | Min.  | Typ. | Max. |       |               | Min.  | Typ. | Max. |       |
| $T_1$           | 0.5   | -    | 10   | ms    | $T_8$         | 10    | -    | -    | ms    |
| $T_2$           | 0     | -    | 50   | ms    | $T_9$         | 0     | -    | -    | ms    |
| $T_3$           | 0     | -    | 50   | ms    | $T_{10}$      | 0     | -    | -    | ms    |
| $T_4$           | 400   | -    | -    | ms    | $T_{11}$      | 10    | -    | -    | ms    |
| $T_5$           | 200   | -    | -    | ms    | $T_{12}$      | 0.5   | -    | -    | ms    |
| $T_6$           | 200   | -    | -    | ms    | $T_{13}$      | 0     | -    | 5000 | ms    |
| $T_7$           | 3     | -    | 10   | ms    |               |       |      |      |       |

Note)

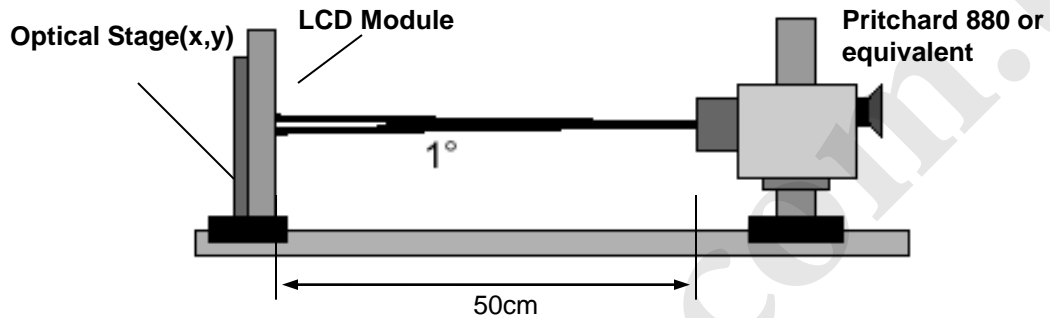
1. Do not insert the mating cable when system turn on.
2. Valid Data have to meet "3-3. LVDS Signal Timing Specifications"
3. LVDS, LED\_EN and PWM need to be on pull-down condition on invalid status.
4. LGD recommend the rising sequence of VLED after the Vcc and valid status of LVDS turn on.

### 4. Optical Specification

Optical characteristics are determined after the unit has been 'ON' and stable for approximately 30 minutes in a dark environment at 25°C. The values specified are at an approximate distance 50cm from the LCD surface at a viewing angle of  $\Phi$  and  $\Theta$  equal to 0°.

FIG. 1 presents additional information concerning the measurement equipment and method.

**FIG. 1 Optical Characteristic Measurement Equipment and Method**



**Table 9. OPTICAL CHARACTERISTICS**

Ta=25°C, VCC=3.3V, fv=60Hz, fCLK= 74.5MHz

| Parameter                         | Symbol                          | Values |       |       | Units             | Notes |
|-----------------------------------|---------------------------------|--------|-------|-------|-------------------|-------|
|                                   |                                 | Min    | Typ   | Max   |                   |       |
| Contrast Ratio                    | CR                              | 400    | -     | -     |                   | 1     |
| Surface Luminance, white          | L <sub>WH</sub>                 | 210    | 250   | -     | cd/m <sup>2</sup> | 2     |
| Luminance Variation               | $\delta_{WHITE}$                | -      | 1.4   | 1.6   |                   | 3     |
| Response Time                     | T <sub>R</sub> + T <sub>D</sub> | -      | 35    | 50    | ms                | 4     |
| Color Coordinates                 |                                 |        |       |       |                   |       |
| RED                               | RX                              | 0.599  | 0.629 | 0.659 |                   |       |
|                                   | RY                              | 0.320  | 0.350 | 0.380 |                   |       |
| GREEN                             | GX                              | 0.319  | 0.349 | 0.379 |                   |       |
|                                   | GY                              | 0.584  | 0.614 | 0.644 |                   |       |
| BLUE                              | BX                              | 0.124  | 0.154 | 0.184 |                   |       |
|                                   | BY                              | 0.082  | 0.112 | 0.142 |                   |       |
| WHITE                             | WX                              | 0.283  | 0.313 | 0.343 |                   |       |
|                                   | WY                              | 0.299  | 0.329 | 0.359 |                   |       |
| Viewing Angle                     |                                 |        |       |       |                   |       |
| x axis, right( $\Phi=0^\circ$ )   | $\Theta_r$                      | 80     | -     | -     | degree            | 5     |
| x axis, left ( $\Phi=180^\circ$ ) | $\Theta_l$                      | 80     | -     | -     | degree            |       |
| y axis, up ( $\Phi=90^\circ$ )    | $\Theta_u$                      | 80     | -     | -     | degree            |       |
| y axis, down ( $\Phi=270^\circ$ ) | $\Theta_d$                      | 80     | -     | -     | degree            |       |
| Gray Scale                        |                                 |        |       |       |                   | 6     |

Product Specification

Note)

1. Contrast Ratio(CR) is defined mathematically as

$$\text{Contrast Ratio} = \frac{\text{Surface Luminance with all white pixels}}{\text{Surface Luminance with all black pixels}}$$

2. Surface luminance is the average of 5 point across the LCD surface 50cm from the surface with all pixels displaying white. For more information see FIG 1.

$$\text{LWH} = \text{Average}(\text{L1}, \text{L2}, \dots \text{L5})$$

3. The variation in surface luminance , The panel total variation ( $\delta$  WHITE) is determined by measuring LN at each test position 1 through 13 and then defined as following numerical formula.  
For more information see FIG 2.

$$\delta \text{ WHITE} = \text{Maximum}(\text{L1}, \text{L2}, \dots \text{L13}) / \text{Minimum}(\text{L1}, \text{L2}, \dots \text{L13})$$

4. Response time is the time required for the display to transition from white to black (rise time, TrR) and from black to white(Decay Time, TrD). For additional information see FIG 3.

5. Viewing angle is the angle at which the contrast ratio is greater than 10. The angles are determined for the horizontal or x axis and the vertical or y axis with respect to the z axis which is normal to the LCD surface. For more information see FIG 4.

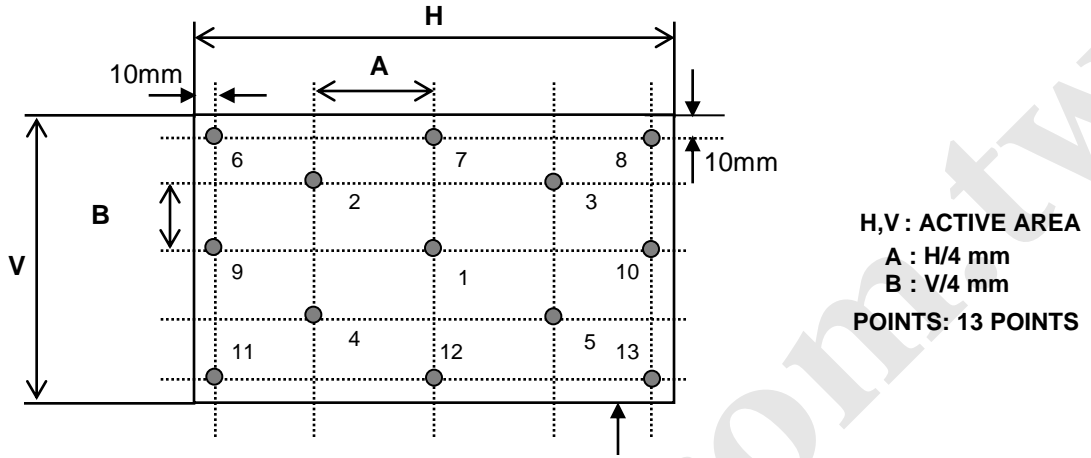
6. Gray scale specification

\* fV = 60Hz

| Gray Level | Luminance [%] (Typ) |
|------------|---------------------|
| L0         | 0.13                |
| L7         | 0.93                |
| L15        | 4.53                |
| L23        | 10.8                |
| L31        | 20.3                |
| L39        | 33.0                |
| L47        | 49.0                |
| L55        | 73.0                |
| L63        | 100.0               |

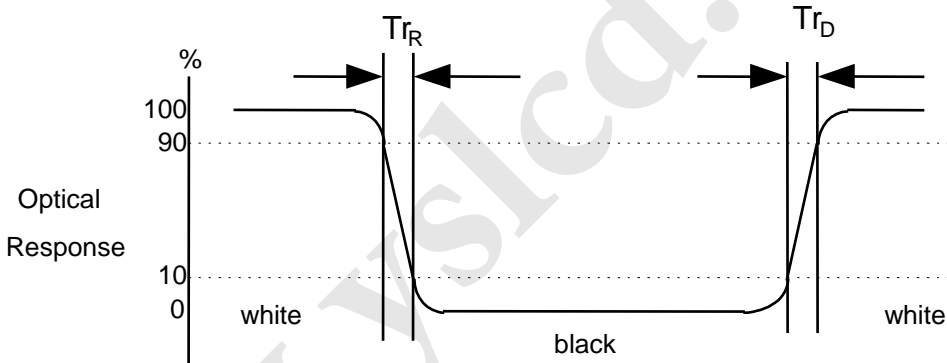
**FIG. 2 Luminance**

<Measuring point for Average Luminance & measuring point for Luminance variation>

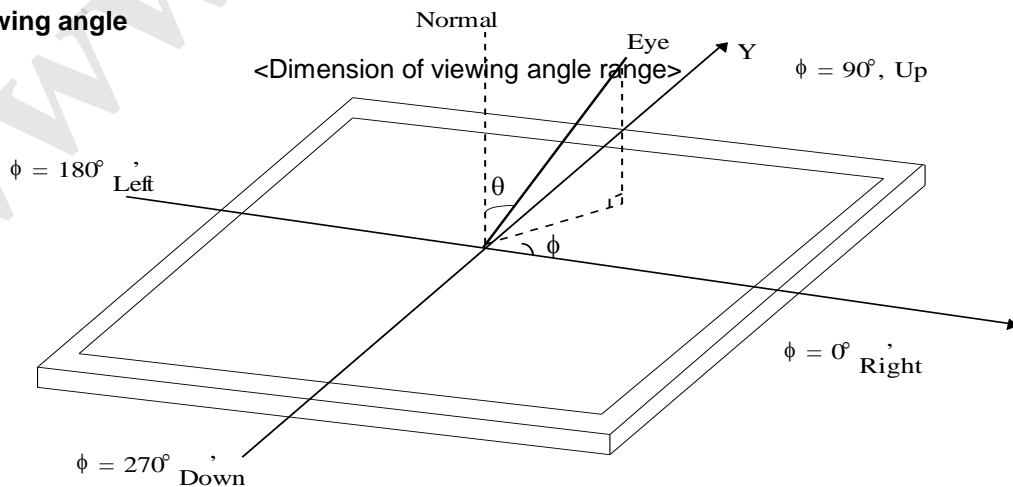


**FIG. 3 Response Time**

The response time is defined as the following figure and shall be measured by switching the input signal for “black” and “white”.



**FIG. 4 Viewing angle**





## Product Specification

## 5. Mechanical Characteristics

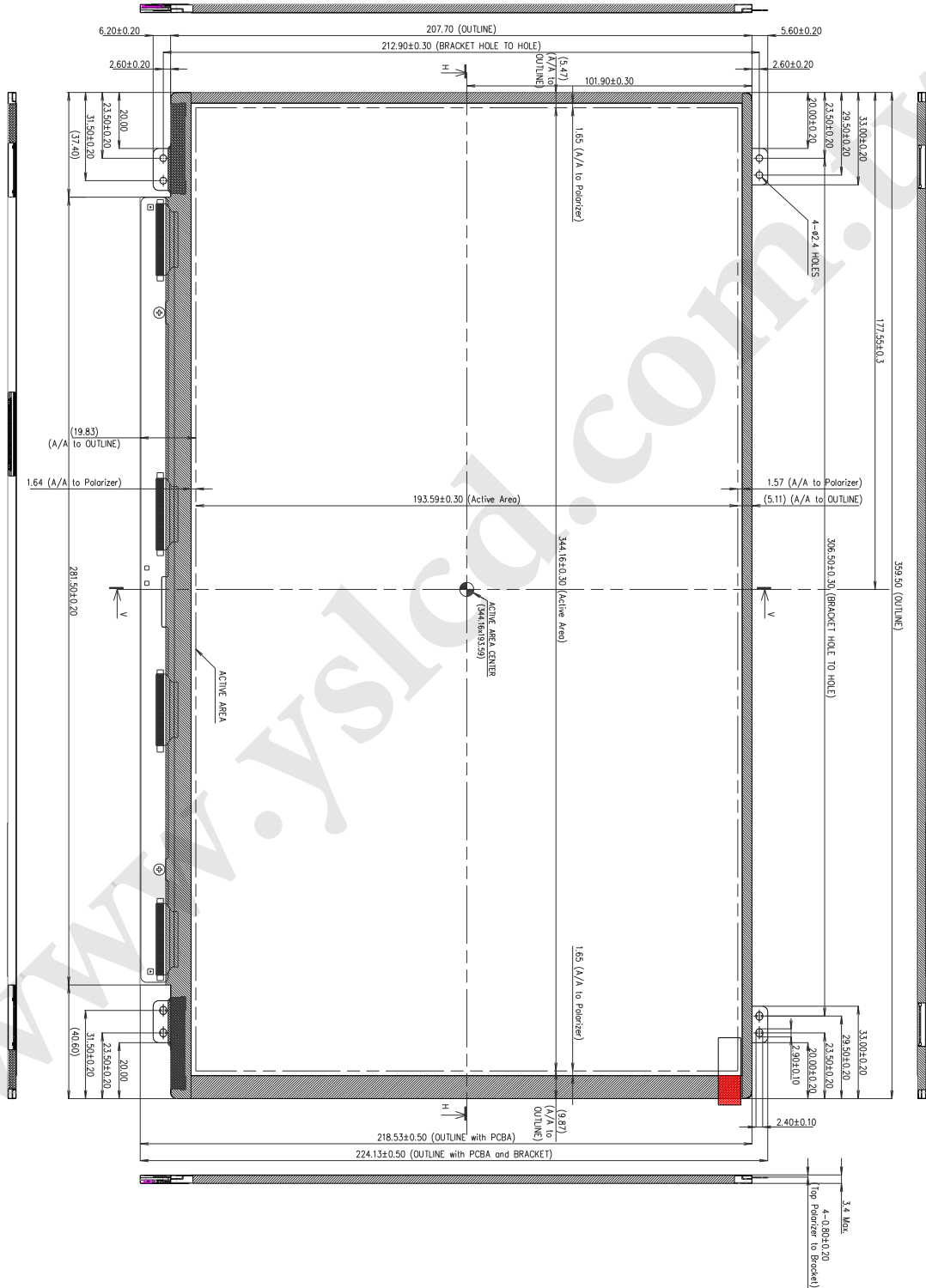
The contents provide general mechanical characteristics for the model LP156WF4. In addition the figures in the next page are detailed mechanical drawing of the LCD.

|                     |   |                             |
|---------------------|---|-----------------------------|
| Outline Dimension   | Horizontal  | $359.5 \pm 0.5\text{mm}$    |
|                     | Vertical  | $207.7 \pm 0.5\text{mm}$    |
|                     | Thickness   | 3.4mm (max)                 |
| Bezel Area          | Horizontal  | $347.55 \pm 0.5\text{mm}$   |
|                     | Vertical  | $196.9 \pm 0.5\text{mm}$    |
| Active Display Area | Horizontal  | $344.16 \pm 0.3 \text{ mm}$ |
|                     | Vertical  | $193.59 \pm 0.3 \text{ mm}$ |
| Weight              | 330g ( Max.) / 320g ( Typ.)                                   |                             |
| Surface Treatment   | Hard coating(3H), Anti-Glare treatment of the front polarizer |                             |

**Product Specification**

<FRONT VIEW>

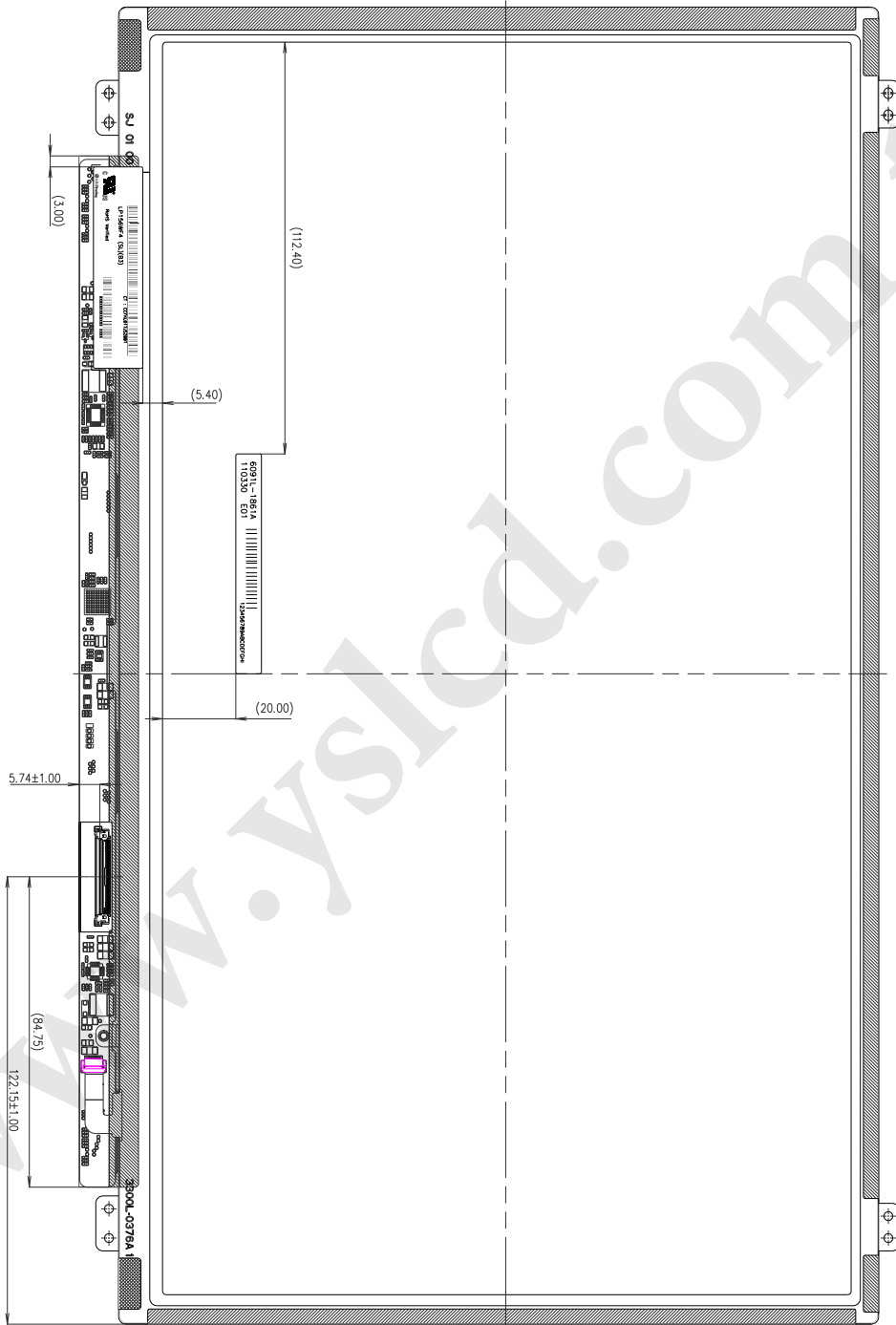
Note) Unit:[mm], General tolerance:  $\pm 0.5$ mm



Product Specification

<REAR VIEW>

Note) Unit:[mm], General tolerance: ± 0.5mm



## Product Specification

## 6. Reliability

Environment test condition

| No. | Test Item                                       | Conditions  |
|-----|---|---|
| 1   | High temperature storage test                   | Ta= 60°C, 240h  |
| 2   | Low temperature storage test                    | Ta= -20°C, 240h   |
| 3   | High temperature operation test                 | Ta= 50°C, 50%RH, 240h   |
| 4   | Low temperature operation test                  | Ta= 0°C, 240h   |
| 5   | Vibration test (non-operating)                  | Sine wave, 5 ~ 150Hz, 1.5G, 0.37oct/min<br>3 axis, 30min/axis   |
| 6   | Shock test (non-operating)                      | - No functional or cosmetic defects following a shock to all 6 sides delivering at least 180 G in a half sine pulse no longer than 2 ms to the display module<br>- No functional defects following a shock delivering at least 200 g in a half sine pulse no longer than 2 ms to each of 6 sides. Each of the 6 sides will be shock tested with one each display, for a total of 6 displays |
| 7   | Altitude<br><br>operating<br>storage / shipment | 0 ~ 10,000 feet (3,048m) 24Hr<br>0 ~ 40,000 feet (12,192m) 24Hr   |

{ Result Evaluation Criteria }

There should be no change which might affect the practical display function when the display quality test is conducted under normal operating condition.

## 7. International Standards

### 7-1. Safety

- a) UL 60950-1, Second Edition, Underwriters Laboratories Inc.  
Information Technology Equipment - Safety - Part 1 : General Requirements.
- b) CAN/CSA C22.2 No.60950-1-07, Second Edition, Canadian Standards Association.  
Information Technology Equipment - Safety - Part 1 : General Requirements.
- c) EN 60950-1:2006 + A11:2009, European Committee for Electrotechnical Standardization (CENELEC).  
Information Technology Equipment - Safety - Part 1 : General Requirements.
- d) IEC 60950-1:2005, Second Edition, The International Electrotechnical Commission (IEC).  
Information Technology Equipment - Safety - Part 1 : General Requirements.

### 7-2. EMC

- a) ANSI C63.4 "American National Standard for Methods of Measurement of Radio-Noise Emissions from Low-Voltage Electrical and Electronic Equipment in the Range of 9 kHz to 40 GHz." American National Standards Institute (ANSI), 2003.
- b) CISPR 22 "Information technology equipment – Radio disturbance characteristics – Limit and methods of measurement." International Special Committee on Radio Interference (CISPR), 2005.
- c) CISPR 13 "Sound and television broadcast receivers and associated equipment – Radio disturbance characteristics – Limits and method of measurement." International Special Committee on Radio Interference (CISPR), 2006.

### 7-3. Environment

- a) RoHS, Directive 2002/95/EC of the European Parliament and of the council of 27 January 2003

## 8. Packing

### 8-1. Designation of Lot Mark

a) Lot Mark

|   |   |   |   |   |   |   |   |   |   |   |   |   |
|---|---|---|---|---|---|---|---|---|---|---|---|---|
| A | B | C | D | E | F | G | H | I | J | K | L | M |
|---|---|---|---|---|---|---|---|---|---|---|---|---|

A,B,C : SIZE(INCH)

E : MONTH

D : YEAR

F ~ M : SERIAL NO.

Note

1. YEAR

|      |      |      |      |      |      |      |      |      |      |      |
|------|------|------|------|------|------|------|------|------|------|------|
| Year | 2011 | 2012 | 2013 | 2014 | 2015 | 2016 | 2017 | 2018 | 2019 | 2020 |
| Mark | A    | B    | C    | D    | E    | F    | G    | H    | J    | K    |

2. MONTH

|       |     |     |     |     |     |     |     |     |     |     |     |     |
|-------|-----|-----|-----|-----|-----|-----|-----|-----|-----|-----|-----|-----|
| Month | Jan | Feb | Mar | Apr | May | Jun | Jul | Aug | Sep | Oct | Nov | Dec |
| Mark  | 1   | 2   | 3   | 4   | 5   | 6   | 7   | 8   | 9   | A   | B   | C   |

b) Location of Lot Mark

Serial No. is printed on the label. The label is attached to the backside of the LCD module.  
 This is subject to change without prior notice.

### 8-2. Packing Form

a) Package quantity in one box : 20 pcs

b) Box Size : 478 x 365 x 328

## 9. PRECAUTIONS

Please pay attention to the followings when you use this TFT LCD module.

### 9-1. MOUNTING PRECAUTIONS

- (1) You must mount a module using holes arranged in four corners or four sides.
- (2) You should consider the mounting structure so that uneven force (ex. Twisted stress) is not applied to the module. And the case on which a module is mounted should have sufficient strength so that external force is not transmitted directly to the module.
- (3) Please attach the surface transparent protective plate to the surface in order to protect the polarizer. Transparent protective plate should have sufficient strength in order to resist external force.
- (4) You should adopt radiation structure to satisfy the temperature specification.
- (5) Acetic acid type and chlorine type materials for the cover case are not desirable because the former generates corrosive gas of attacking the polarizer at high temperature and the latter causes circuit break by electro-chemical reaction.
- (6) Do not touch, push or rub the exposed polarizers with glass, tweezers or anything harder than HB pencil lead. And please do not rub with dust clothes with chemical treatment. Do not touch the surface of polarizer for bare hand or greasy cloth. (Some cosmetics are detrimental to the polarizer.)
- (7) When the surface becomes dusty, please wipe gently with absorbent cotton or other soft materials like chamois soaks with petroleum benzene. Normal-hexane is recommended for cleaning the adhesives used to attach front / rear polarizers. Do not use acetone, toluene and alcohol because they cause chemical damage to the polarizer.
- (8) Wipe off saliva or water drops as soon as possible. Their long time contact with polarizer causes deformations and color fading.
- (9) Do not open the case because inside circuits do not have sufficient strength.
- (10) When handling the LCD module, it needs to handle with care not to give mechanical stress to the PCB and Mounting Hole area."

### 9-2. OPERATING PRECAUTIONS

- (1) The spike noise causes the mis-operation of circuits. It should be lower than following voltage :  
 $V = \pm 200\text{mV}$  (Over and under shoot voltage)
- (2) Response time depends on the temperature. (In lower temperature, it becomes longer.)
- (3) Brightness depends on the temperature. (In lower temperature, it becomes lower.)  
And in lower temperature, response time (required time that brightness is stable after turned on) becomes longer.
- (4) Be careful for condensation at sudden temperature change. Condensation makes damage to polarizer or electrical contacted parts. And after fading condensation, smear or spot will occur.
- (5) When fixed patterns are displayed for a long time, remnant image is likely to occur.
- (6) Module has high frequency circuits. Sufficient suppression to the electromagnetic interference shall be done by system manufacturers. Grounding and shielding methods may be important to minimized the interference.

### 9-3. ELECTROSTATIC DISCHARGE CONTROL

Since a module is composed of electronic circuits, it is not strong to electrostatic discharge. Make certain that treatment persons are connected to ground through wrist band etc. And don't touch interface pin directly.

### 9-4. PRECAUTIONS FOR STRONG LIGHT EXPOSURE

Strong light exposure causes degradation of polarizer and color filter.

### 9-5. STORAGE

When storing modules as spares for a long time, the following precautions are necessary.

- (1) Store them in a dark place. Do not expose the module to sunlight or fluorescent light. Keep the temperature between 5°C and 35°C at normal humidity.
- (2) The polarizer surface should not come in contact with any other object.  
It is recommended that they be stored in the container in which they were shipped.

### 9-6. HANDLING PRECAUTIONS FOR PROTECTION FILM

- (1) When the protection film is peeled off, static electricity is generated between the film and polarizer.  
This should be peeled off slowly and carefully by people who are electrically grounded and with well ion-blown equipment or in such a condition, etc.
- (2) The protection film is attached to the polarizer with a small amount of glue. If some stress is applied to rub the protection film against the polarizer during the time you peel off the film, the glue is apt to remain on the polarizer.  
Please carefully peel off the protection film without rubbing it against the polarizer.
- (3) When the module with protection film attached is stored for a long time, sometimes there remains a very small amount of glue still on the polarizer after the protection film is peeled off.
- (4) You can remove the glue easily. When the glue remains on the polarizer surface or its vestige is recognized, please wipe them off with absorbent cotton waste or other soft material like chamois soaked with normal-hexane.



**Product Specification**
**APPENDIX A. Enhanced Extended Display Identification Data (EEDID™) 1/3**

|                                 | Byte (Dec) | Byte (Hex)          | Field Name and Comments   | Value (Hex) | Value (Bin) |
|---------------------------------|------------|---------------------|---|-------------|-------------|
| <b>Header</b>                   | 0          | 00                  | Header  | 00          | 00000000    |
|                                 | 1          | 01                  | Header  | FF          | 11111111    |
|                                 | 2          | 02                  | Header  | FF          | 11111111    |
|                                 | 3          | 03                  | Header  | FF          | 11111111    |
|                                 | 4          | 04                  | Header  | FF          | 11111111    |
|                                 | 5          | 05                  | Header  | FF          | 11111111    |
|                                 | 6          | 06                  | Header  | FF          | 11111111    |
|                                 | 7          | 07                  | Header  | 00          | 00000000    |
| <b>Vendor / Product Version</b> | 8          | 08                  | ID Manufacture Name LGD   | 30          | 00110000    |
|                                 | 9          | 09                  | ID Manufacture Name   | E4          | 11100100    |
|                                 | 10         | 0A                  | ID Product Code 037Fh   | 7F          | 00100011    |
|                                 | 11         | 0B                  | ( Hex. LSB first )  | 03          | 00000011    |
|                                 | 12         | 0C                  | ID Serial No. - Optional ("00h" If not used, Number Only and LSB First)   | 00          | 00000000    |
|                                 | 13         | 0D                  | ID Serial No. - Optional ("00h" If not used, Number Only and LSB First)   | 00          | 00000000    |
|                                 | 14         | 0E                  | ID Serial No. - Optional ("00h" If not used, Number Only and LSB First)   | 00          | 00000000    |
|                                 | 15         | 0F                  | ID Serial No. - Optional ("00h" If not used, Number Only and LSB First)   | 00          | 00000000    |
|                                 | 16         | 10                  | Week of Manufacture - Optinal 00 weeks  | 00          | 00000000    |
|                                 | 17         | 11                  | Year of Manufacture 2011 years  | 15          | 00010101    |
|                                 | 18         | 12                  | EDID structure version # = 1  | 01          | 00000001    |
| 19                              | 13         | EDID revision # = 4 | 04  | 00000100    |             |
| <b>Display Parameters</b>       | 20         | 14                  | Video input Definition = Input is a Digital Video signal Interface , Colo Bit Depth : 6 Bits per Primary Color , Digital Video Interface Standard Supported: Digital Interface is not defined   | 90          | 10010000    |
|                                 | 21         | 15                  | Horizontal Screen Size (Rounded cm) = 34 cm34 cm  | 22          | 00100010    |
|                                 | 22         | 16                  | Vertical Screen Size (Rounded cm) = 19 cm19 cm  | 13          | 00010011    |
|                                 | 23         | 17                  | Display Transfer Characteristic (Gamma) = (gamma*100)-100 = Example:(2.2*100)-100=120 = 2.2 Gamma   | 78          | 01111000    |
|                                 | 24         | 18                  | Feature Support [ Display Power Management(DPM) : Standby Mode is not supported, Suspend Mode is not supported, Active Off = Very Low Power is not supported ,Supported Color Encoding Formats : RGB 4:4:4 ,Other Feature Support Flags : No_sRGB, Preferred Timing Mode, No_Display is continuous frequency (Multi-mode_Base EDID and Extension Block).] | 02          | 00000010    |
| <b>Panel Color Coordinates</b>  | 25         | 19                  | Red/Green Low Bits (RxRy/GxGy)  | 25          | 10110110    |
|                                 | 26         | 1A                  | Blue/White Low Bits (BxBy/WxWy)   | B5          | 00100101    |
|                                 | 27         | 1B                  | Red X Rx = 0.629  | A1          | 10011110    |
|                                 | 28         | 1C                  | Red Y Ry = 0.350  | 59          | 01011110    |
|                                 | 29         | 1D                  | Green X Gx = 0.349  | 59          | 01011000    |
|                                 | 30         | 1E                  | Green Y Gy = 0.614  | 9D          | 10011011    |
|                                 | 31         | 1F                  | Blue X Bx = 0.154   | 27          | 00100110    |
|                                 | 32         | 20                  | Blue Y By = 0.112   | 1C          | 00011101    |
|                                 | 33         | 21                  | White X Wx = 0.313  | 50          | 01010000    |
|                                 | 34         | 22                  | White Y Wy = 0.329  | 54          | 01010100    |
| <b>Established</b>              | 35         | 23                  | Established timing 1 ( Optional_00h if not used)  | 00          | 00000000    |
|                                 | 36         | 24                  | Established timing 2 ( Optional_00h if not used)  | 00          | 00000000    |
|                                 | 37         | 25                  | Manufacturer's timings ( Optional_00h if not used)  | 00          | 00000000    |
| <b>Standard Timing ID</b>       | 38         | 26                  | Standard timing ID1 ( Optional_01h if not used)   | 01          | 00000001    |
|                                 | 39         | 27                  | Standard timing ID1 ( Optional_01h if not used)   | 01          | 00000001    |
|                                 | 40         | 28                  | Standard timing ID2 ( Optional_01h if not used)   | 01          | 00000001    |
|                                 | 41         | 29                  | Standard timing ID2 ( Optional_01h if not used)   | 01          | 00000001    |
|                                 | 42         | 2A                  | Standard timing ID3 ( Optional_01h if not used)   | 01          | 00000001    |
|                                 | 43         | 2B                  | Standard timing ID3 ( Optional_01h if not used)   | 01          | 00000001    |
|                                 | 44         | 2C                  | Standard timing ID4 ( Optional_01h if not used)   | 01          | 00000001    |
|                                 | 45         | 2D                  | Standard timing ID4 ( Optional_01h if not used)   | 01          | 00000001    |
|                                 | 46         | 2E                  | Standard timing ID5 ( Optional_01h if not used)   | 01          | 00000001    |
|                                 | 47         | 2F                  | Standard timing ID5 ( Optional_01h if not used)   | 01          | 00000001    |
|                                 | 48         | 30                  | Standard timing ID6 ( Optional_01h if not used)   | 01          | 00000001    |
|                                 | 49         | 31                  | Standard timing ID6 ( Optional_01h if not used)   | 01          | 00000001    |
|                                 | 50         | 32                  | Standard timing ID7 ( Optional_01h if not used)   | 01          | 00000001    |
|                                 | 51         | 33                  | Standard timing ID7 ( Optional_01h if not used)   | 01          | 00000001    |
|                                 | 52         | 34                  | Standard timing ID8 ( Optional_01h if not used)   | 01          | 00000001    |
|                                 | 53         | 35                  | Standard timing ID8 ( Optional_01h if not used)   | 01          | 00000001    |

## Product Specification

**APPENDIX A. Enhanced Extended Display Identification Data (EEDID™) 2/3**

|                      | Byte (Dec) | Byte (Hex)  | Field Name and Comments  | Value (Hex) | Value (Bin) |
|----------------------|------------|---|--|-------------|-------------|
| Timing Descriptor #1 | 54         | 36  | Pixel Clock/10,000 (LSB) 149 MHz @ 60Hz                                  | 34          | 00110100    |
|                      | 55         | 37  | Pixel Clock/10,000 (MSB)   | 3A          | 00111010    |
|                      | 56         | 38  | Horizontal Active (lower 8 bits) 1920 Pixels                             | 80          | 10000000    |
|                      | 57         | 39  | Horizontal Blanking(Thp-HA) (lower 8 bits) 288 Pixels                    | 20          | 00100000    |
|                      | 58         | 3A  | Horizontal Active / Horizontal Blanking(Thp-HA) (upper 4:4bits)          | 71          | 01110001    |
|                      | 59         | 3B  | Vertical Active 1080 Lines   | 38          | 00111000    |
|                      | 60         | 3C  | Vertical Blanking (Tvp-HA) (DE Blanking typ.for DE only panels) 44 Lines | 2C          | 00101100    |
|                      | 61         | 3D  | Vertical Active : Vertical Blanking (Tvp-HA) (upper 4:4bits)             | 40          | 01000000    |
|                      | 62         | 3E  | Horizontal Sync. Offset (Thfp) 48 Pixels                                 | 30          | 00110000    |
|                      | 63         | 3F  | Horizontal Sync Pulse Width (HSPW) 72 Pixels                             | 48          | 01001000    |
|                      | 64         | 40  | Vertical Sync Offset(Tvfp) : Sync Width (VSPW) 3 Lines : 5 Lines         | 35          | 00110101    |
|                      | 65         | 41  | Horizontal Vertical Sync Offset/Width (upper 2bits)                      | 00          | 00000000    |
|                      | 66         | 42  | Horizontal Image Size (mm) 344 mm  | 58          | 01011000    |
|                      | 67         | 43  | Vertical Image Size (mm) 194 mm  | C2          | 11000010    |
| 68                   | 44         | Horizontal Image Size / Vertical Image Size   | 10   | 00010000    |             |
| 69                   | 45         | Horizontal Border = 0 (Zero for Notebook LCD)   | 00   | 00000000    |             |
| 70                   | 46         | Vertical Border = 0 (Zero for Notebook LCD)   | 00   | 00000000    |             |
| 71                   | 47         | Non-Interlace, Normal display, no stereo, Digital Separate [ Vsync_NEG, Hsync_NEG (outside of V-sync) ] | 18   | 00011000    |             |
| Timing Descriptor #2 | 72         | 48  | Pixel Clock/10,000 (LSB) 99.33 MHz @ 40Hz                                | CD          | 11001101    |
|                      | 73         | 49  | Pixel Clock/10,000 (MSB)   | 26          | 00100110    |
|                      | 74         | 4A  | Horizontal Active (lower 8 bits) 1920 Pixels                             | 80          | 10000000    |
|                      | 75         | 4B  | Horizontal Blanking(Thp-HA) (lower 8 bits) 288 Pixels                    | 20          | 00100000    |
|                      | 76         | 4C  | Horizontal Active / Horizontal Blanking(Thp-HA) (upper 4:4bits)          | 71          | 01110001    |
|                      | 77         | 4D  | Vertical Active 1080 Lines   | 38          | 00111000    |
|                      | 78         | 4E  | Vertical Blanking (Tvp-HA) (DE Blanking typ.for DE only panels) 44 Lines | 2C          | 00101100    |
|                      | 79         | 4F  | Vertical Active : Vertical Blanking (Tvp-HA) (upper 4:4bits)             | 40          | 01000000    |
|                      | 80         | 50  | Horizontal Sync. Offset (Thfp) 48 Pixels                                 | 30          | 00110000    |
|                      | 81         | 51  | Horizontal Sync Pulse Width (HSPW) 72 Pixels                             | 48          | 01001000    |
|                      | 82         | 52  | Vertical Sync Offset(Tvfp) : Sync Width (VSPW) 3 Lines : 5 Lines         | 35          | 00110101    |
|                      | 83         | 53  | Horizontal Vertical Sync Offset/Width (upper 2bits)                      | 00          | 00000000    |
|                      | 84         | 54  | Horizontal Image Size (mm) 344 mm  | 58          | 01011000    |
|                      | 85         | 55  | Vertical Image Size (mm) 194 mm  | C2          | 11000010    |
| 86                   | 56         | Horizontal Image Size / Vertical Image Size   | 10   | 00010000    |             |
| 87                   | 57         | Horizontal Border = 0 (Zero for Notebook LCD)   | 00   | 00000000    |             |
| 88                   | 58         | Vertical Border = 0 (Zero for Notebook LCD)   | 00   | 00000000    |             |
| 89                   | 59         | Non-Interlace, Normal display, no stereo, Digital Separate [ Vsync_NEG, Hsync_NEG (outside of V-sync) ] | 18   | 00011000    |             |
| Timing Descriptor #3 | 90         | 5A  | Blank for nvDPS  | 00          | 00000000    |
|                      | 91         | 5B  | Blank for nvDPS  | 00          | 00000000    |
|                      | 92         | 5C  | Blank for nvDPS  | 00          | 00000000    |
|                      | 93         | 5D  | Blank for nvDPS  | 00          | 00000000    |
|                      | 94         | 5E  | Blank for nvDPS  | 00          | 00000000    |
|                      | 95         | 5F  | Blank for nvDPS  | 00          | 00000000    |
|                      | 96         | 60  | Blank for nvDPS  | 00          | 00000000    |
|                      | 97         | 61  | Blank for nvDPS  | 00          | 00000000    |
|                      | 98         | 62  | Blank for nvDPS  | 00          | 00000000    |
|                      | 99         | 63  | Blank for nvDPS  | 00          | 00000000    |
|                      | 100        | 64  | Blank for nvDPS  | 00          | 00000000    |
|                      | 101        | 65  | Blank for nvDPS  | 00          | 00000000    |
|                      | 102        | 66  | Blank for nvDPS  | 00          | 00000000    |
|                      | 103        | 67  | Blank for nvDPS  | 00          | 00000000    |
| 104                  | 68         | Blank for nvDPS   | 00   | 00000000    |             |
| 105                  | 69         | Blank for nvDPS   | 00   | 00000000    |             |
| 106                  | 6A         | Blank for nvDPS   | 00   | 00000000    |             |
| 107                  | 6B         | Blank for nvDPS   | 00   | 00000000    |             |

## Product Specification

**APPENDIX A. Enhanced Extended Display Identification Data (EEDID™) 3/3**

|                             | Byte (Dec)  | Byte (Hex) | Field Name and Comments  | Value (Hex)     | Value (Bin) |          |
|-----------------------------|-------------|------------|--|-----------------|-------------|----------|
| <b>Timing Descriptor #4</b> | 108         | 6C         | Detailed Timing Descriptions #4  | 00              | 00000000    |          |
|                             | 109         | 6D         | Flag   | 00              | 00000000    |          |
|                             | 110         | 6E         | Reserved   | 00              | 00000000    |          |
|                             | 111         | 6F         | For Brightness Table and Power consumption                                     | 02              | 00000010    |          |
|                             | 112         | 70         | Flag   | 00              | 00000000    |          |
|                             | 113         | 71         | PWM % [7:0] @ Step 0   | 4 % @ 10 nit    | 0A          | 00001010 |
|                             | 114         | 72         | PWM % [7:0] @ Step 5   | 24 % @ 60 nit   | 3D          | 00111101 |
|                             | 115         | 73         | PWM % [7:0] @ Step 10  | 100 % @ 250 nit | FF          | 11111111 |
|                             | 116         | 74         | Nits [7:0] @ Step 0  |                 | 0A          | 00001010 |
|                             | 117         | 75         | Nits [7:0] @ Step 5  |                 | 3C          | 00111100 |
|                             | 118         | 76         | Nits [7:0] @ Step 10   |                 | 7D          | 01111101 |
|                             | 119         | 77         | Panel Electronicx Power @ 32 x 32 Chess Pattern = 1509 mW                      |                 | 26          | 00100110 |
|                             | 120         | 78         | Backlight Power @ 60 nits = 1152 mW  |                 | 1D          | 00011101 |
|                             | 121         | 79         | Backlight Power @ Step 10 = 4495 mW  |                 | 38          | 00111000 |
|                             | 122         | 7A         | Nits @ 100% PWM Duty = 250 nit   |                 | 7D          | 01111101 |
|                             | <b>Chec</b> | 123        | 7B   | Flag            | 00          | 00000000 |
| 124                         |             | 7C         | Flag   | 00              | 00000000    |          |
| 125                         |             | 7D         | Flag   | 00              | 00000000    |          |
|                             | 126         | 7E         | Extension flag (# of optional 128 panel ID extension block to follow, Typ = 0) | 00              | 00000000    |          |
|                             | 127         | 7F         | Check Sum (The 1-byte sum of all 128 bytes in this panel ID block shall = 0)   | AA              | 00000110    |          |