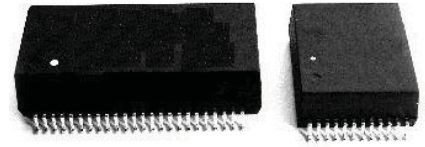


- ※Meets IEEE 802.3 specification
- ※Designed to support 1:1 turns ratio transceivers
- ※Designed for long haul Gigabit Ethernet(10/100/1000BASE-T) applications
- ※LP5008 designed to fit behind 1x1 RJ45 connector
- ※Cable interface for isolation and low common mode emissions
- ※For RoHS part add suffix NL
- ※RoHS “NL” peak solder rating 235°C



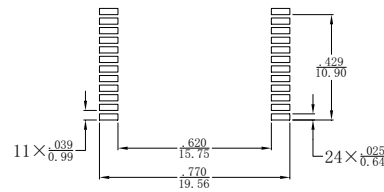
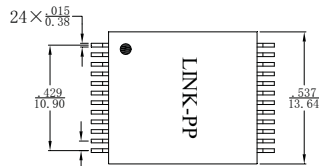
Electrical Specifications @ 25°C --- Operating Temperature 0°C to 70°C

Part Number	Number of Ports	Insertion Loss (dB MAX)	Return Loss (dB MIN)					Differential Common Mode Rejection (dB MIN)			Differential to Mode Crosstalk (dB MIN)			Hipot (Vrms MIN)
			1-30 MHz	40 MHz	50 MHz	60-80 MHz	100 MHz	30 MHz	60 MHz	100 MHz	30 MHz	60 MHz	100 MHz	
LP5008	1	1	-18	-18	-16	-12	-10	-43	-37	-33	-45	-40	-33	1500
LP5012	2	1.4	-16	-14.4	-13.1	-12	-10	-45	-40	-35	-43.5	-37.5	-33	1500
LP5014	2	1.4	-16	-14.4	-13.1	-12	-10	-45	-40	-35	-43.5	-37.5	-33	1500

- 1.Contact Trxcom for RoHS compliant part availability
- 2.Add suffix NL for RoHS compliant parts ,e.g. LP5008 changes to LP5008NL

Mechanical

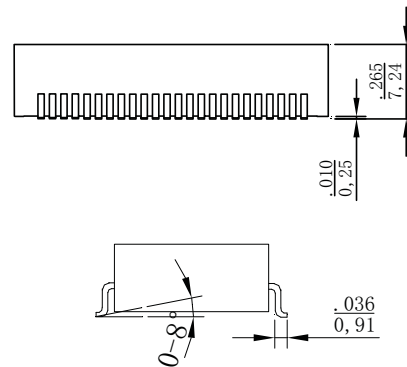
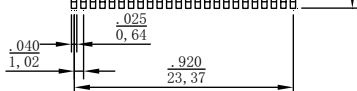
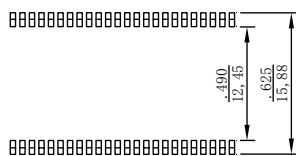
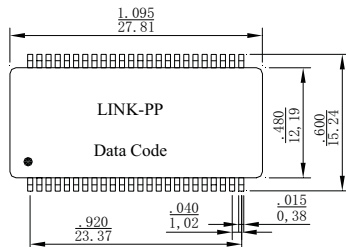
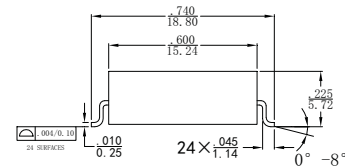
LP5008



SUGGESTED PAD LAYOUT

Dimensions: Inches
Unless otherwise specified, all tolerances are ±0.010

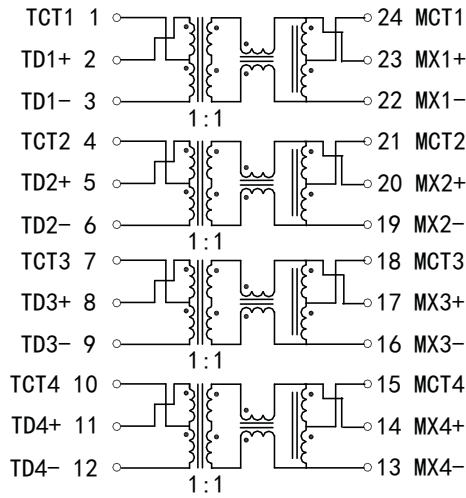
LP5012,LP5014



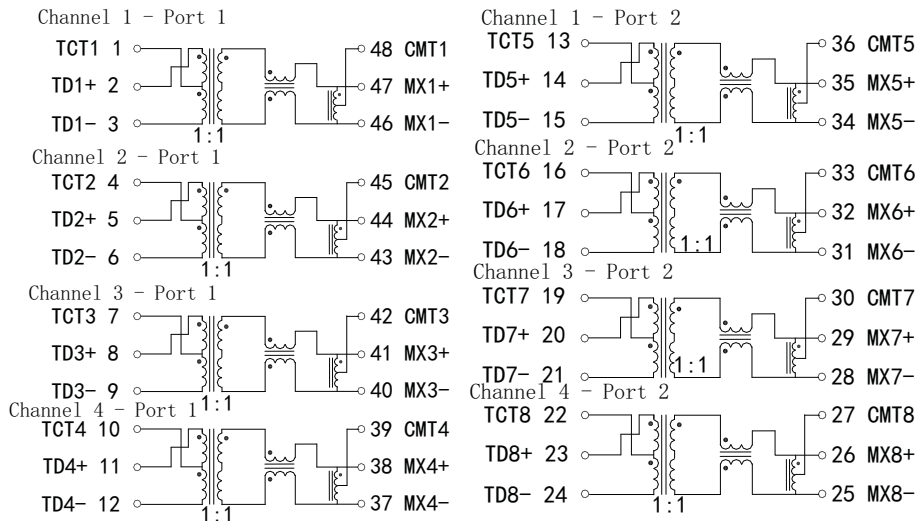
Dimensions: Inch/mm
Unless otherwise specified, all tolerances are ±.010/0.25

Schematic

LP5008



LP5012



LP5014

