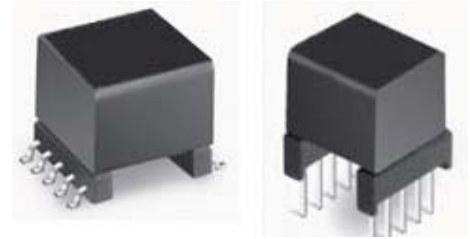


- ※Designed for use AD'S AD20msp918 ADSL Chipset
- ※Excellent THD performance in a small footprint
- ※ Designed to UL 1950 and EN60950 supplementary insulating requirements for working voltages up to 250 Vrms
- ※For RoHS part add suffix NL
- ※RoHS NL peak solder rating 235°C



Electrical Specification @ 25°C--- Operating Temperature 0°C to 70°C

Part Number	Mounting	Turns Ratio (±2%)	OCL @ 10KHz,0.1V (MIN)		Leakage Inductance @100 KHz,0.1v (MAX) (1-4) with 2-3,8-9,10-7 shorted	Longitudinal Balance (30KHz -1.1 MHz)
			(1-4) with 2-3 shorted	(10-7) with 8-9 shorted		
LPA2104	THT	1:1.27	1.80	2.90	7.5μH	50 dB MIN
LPA2105	SMT	1:1.27	1.80	2.90	7.5μH	50 dB MIN

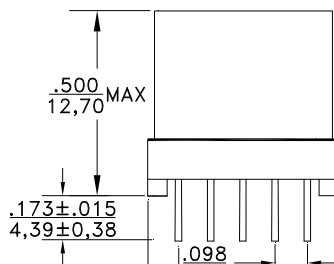
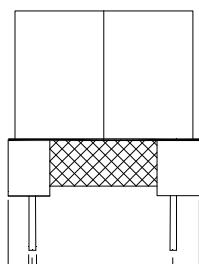
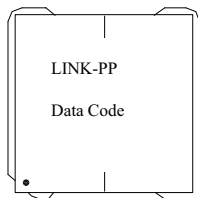
Additional Specifications

Part Number	THD Typical (Linearity)	Load Resistance (Ω)	DC Resistance (1-4),(10-7)	Isolation Voltage (Vrms)	Insertion Loss ¹ (dB @ 100 KHz)
LPA2104	-80 dB @30 KHz	100	2 Ω MAX	1500	<0.5
LPA2105	-80 dB @30 KHz	100	2 Ω MAX	1500	<0.5

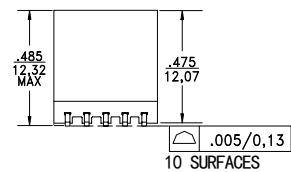
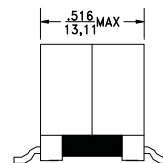
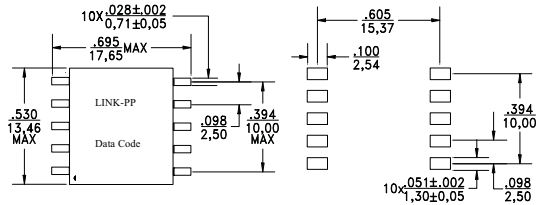
¹FrequencyResponse: ± 1.0dB MAX, form 30KHz to 1.1MHz.

Mechanicals

LPA2104



LPA2105



Schematic

