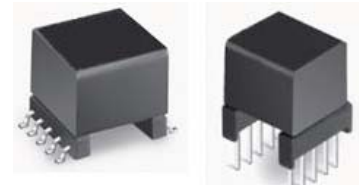


ADSL Line LPAnformers

Link-PP Int'l

Technology

- ✳ For Analog Devices AD20msp930 Chipset
- ✳ Compatible with ADSL and ADSL over ISDN
- CenLPAl Office Applications
- ✳ For RoHS part add suffix NL
- ✳ RoHS NL peak solder rating 235°C



Electrical Specification @ 25°C--- Operating Temperature 0°C to 70°C

Part Number	Mounting	Application	Turns Ratio (1-4):(10-7) (± 2%)	OCL@10 KHz ,0.1V (1-4)with 2-3 shorted	Leakage Inductance @100KHz,0.1V(MAX) (1-4)with2-3,8-9,10-7 shorted	Longitudinal Balance (10KHz -1.1MHz)
LPA2136	THT	ADSL	1:1.1	1.75mH	7.5μH	50dB MIN
LPA2137	SMT	ADSL	1:1.1	1.75mH	7.5μH	50dB MIN
LPA2168	SMT	ADSL/ISDN	1:1	100μH	4.0μH	46dB MIN
LPA2188	THT	ADSL/ISDN	1:1	100μH	4.0μH	46dB MIN

Additional Specifications

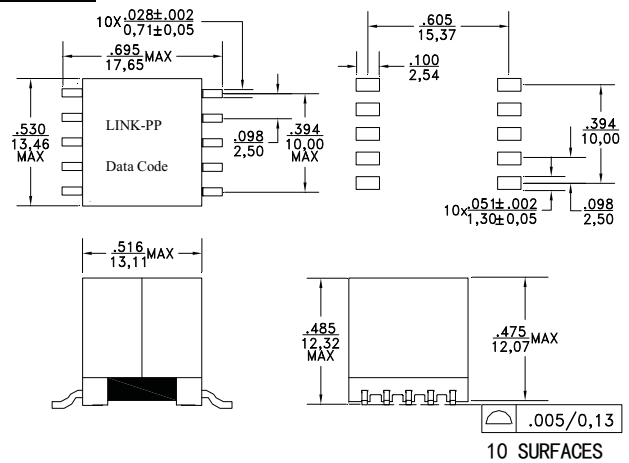
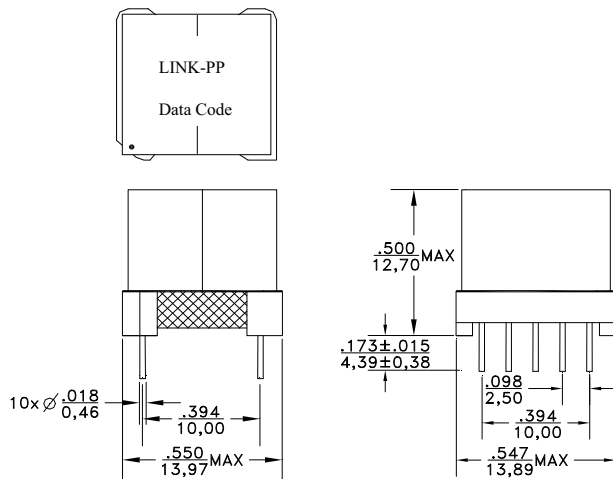
Part Number	THD Typical (Linearity)	DC Resistance (Ω-MAX)		Isolation Voltage (Vrms)	Insertion Loss ¹ (dB @ 300 KHz)
LPA2136	-80 dB @ 30 KHz	1.5(1-4) with (2-3) short	1.3 (10-7)with (8-9) short	1500	<0.5
LPA2137	-80 dB @ 30 KHz	1.5(1-4) with (2-3) short	1.3 (10-7)with (8-9) short	1500	<0.5
LPA2168	-80 dB @ 30 KHz	1.0 (1-4)=(2-3)	1.0(10-8) = (9-7)	1500	<0.5
LPA2188	-80 dB @ 100 KHz	1.0 (1-4)=(2-3)	1.0(10-8) = (9-7)	1500	<0.5

¹Frequencyresponse: ± 1.0 dB MAX, from 30 KHz to 1.1 MHz.

Mechanicals

LPA2136,2188

LPA2137,2168



Schematics

