

PREPARED BY :    DATE	<b>SHARP</b>  TENRI LCD DEVELOPMENT GROUP SHARP CORPORATION  SPECIFICATION	SPEC No. LD-10703
APPROVED BY :    DATE		FILE No.
		ISSUE : July 16, 1998
		PAGE : 17 pages
		APPLICABLE GROUP TFT LIQUID CRYSTAL DISPLAY GROUP

DEVICE SPECIFICATION FOR  
**TFT-LCD Module**  
MODEL No.  
**LQ141X1LH01**

CUSTOMER'S APPROVAL

DATE \_\_\_\_\_

BY \_\_\_\_\_

PRESENTED

BY *H. Fukuoka*

H. FUKUOKA  
Division Deputy General Manager  
Engineering Department I  
TFT Division II  
TFT LIQUID CRYSTAL DISPLAY GROUP  
SHARP CORPORATION

These specification sheets are the proprietary product of SHARP CORPORATION("SHARP) and include materials protected under copyright of SHARP. Do not reproduce or cause any third party to reproduce them in any form or by any means, electronic or mechanical, for any purpose, in whole or in part, without the express written permission of SHARP.

The device listed in these technical literature sheets was designed and manufactured for use in OA equipment.

In case of using the device for applications such as control and safety equipment for transportation(aircraft, trains, automobiles, etc. ), rescue and security equipment and various safety related equipment which require higher reliability and safety, take into consideration that appropriate measures such as fail-safe functions and redundant system design should be taken.

Do not use the device for equipment that requires an extreme level of reliability, such as aerospace applications, telecommunication equipment(trunk lines), nuclear power control equipment and medical or other equipment for life support.

SHARP assumes no responsibility for any damage resulting from the use of the device which does not comply with the instructions and the precautions specified in these technical literature sheets.

Contact and consult with a SHARP sales representative for any questions about this device.

1. Application

This specification applies to a color TFT-LCD module, LQ141X1LH01.

2. Overview

This module is a color active matrix LCD module incorporating amorphous silicon TFT (Thin Film Transistor). It is composed of a color TFT-LCD panel, driver ICs, control circuit and power supply circuit and a backlight unit. Graphics and texts can be displayed on a 1024×3×768 dots panel with 262,144 colors by using LVDS (Low Voltage Differential Signaling) to interface and supplying +3.3V DC supply voltage for TFT-LCD panel driving and supply voltage for backlight.

The TFT-LCD panel used for this module has very high aperture ratio. A low-reflection and higher-color-saturation type color filter is also used for this panel. Therefore, high-brightness and high-contrast image, which is suitable for the multimedia use, can be obtained by using this module.

Optimum viewing direction is 6 o'clock.

Backlight-driving DC/AC inverter is not built in this module.

[Features]

- 1) High aperture panel ; high-brightness or low power consumption.
- 2) Brilliant and high contrast image.
- 3) Small footprint and thin shape.
- 4) Light weight.

3. Mechanical Specifications

Parameter	Specifications	Unit
Display size	36 (14.1") Diagonal	cm
Active area	285.7 (H)×214.3 (V)	mm
Pixel format	1024 (H)×768 (V)	pixel
	(1 pixel = R+G+B dots)	
Pixel pitch	0.279 (H) × 0.279 (V)	mm
Pixel configuration	R,G,B vertical stripe	
Display mode	Normally white	
Unit outline dimensions (typ.)*1	298.5(W)×227.0 (H)×7.2max(D)	mm
Mass	Typ.:610 g Max.:630 g	g
Surface treatment	Anti-glare and hard-coating 2H Low reflection (~5%)	

\*1.Note : excluding backlight cables.

Outline dimensions is shown in Fig.1

4. Input Terminals

4-1. TFT-LCD panel driving

CN1 (LVDS signals and +3.3V DC power supply)

Using connector : FI-SEB20P-HF10 (JAE)

Corresponding connector : FI-SE20M (JAE), or FI-S20S(JAE)

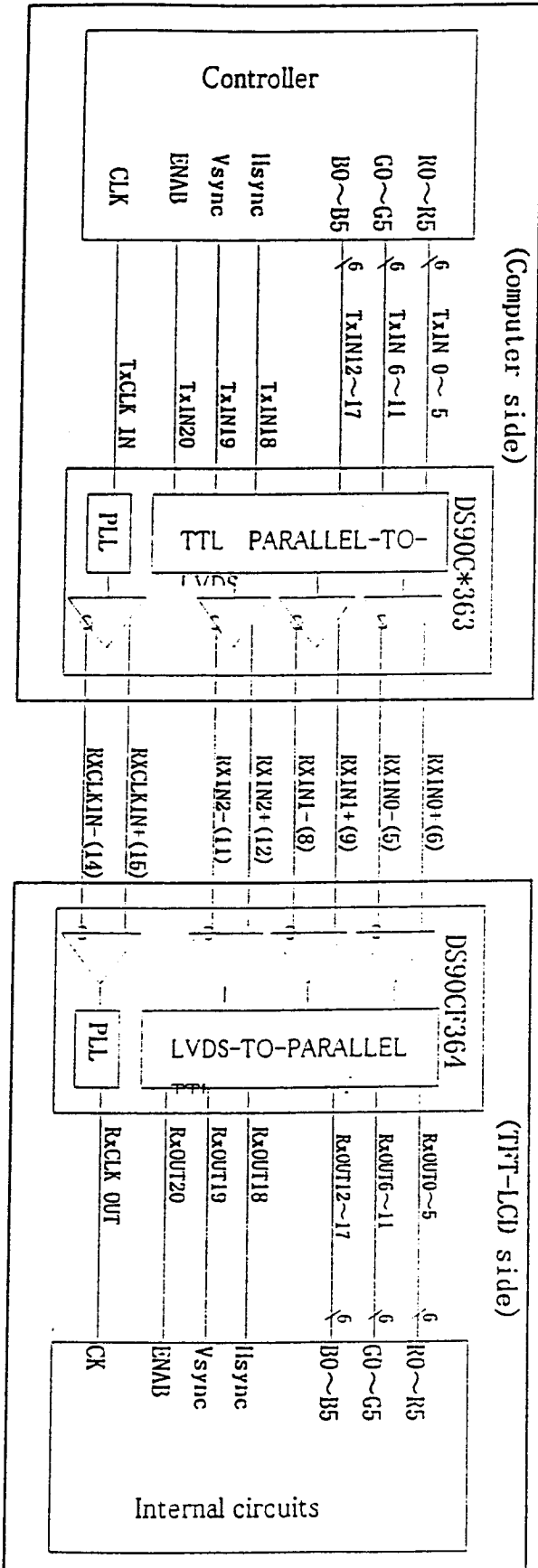
Pin No.	Symbol	Function	Remark
1	Vcc	+3.3V power supply	
2	Vcc	+3.3V power supply	
3	GND		
4	GND		
5	RXIN0-	Receiver signal (-)	LVDS
6	RXIN0+	Receiver signal (+)	LVDS
7	GND		
8	RXIN1-	Receiver signal (-)	LVDS
9	RXIN1+	Receiver signal (+)	LVDS
10	GND		
11	RXIN2-	Receiver signal (-)	LVDS
12	RXIN2+	Receiver signal (+)	LVDS
13	GND		
14	RXCLK IN-	Clock signal (-)	LVDS
15	RXCLK IN+	Clock signal (+)	LVDS
16	GND		
17	RESERVED	This should be electrically opened during operation.	
18	RESERVED	This should be electrically opened during operation.	
19	GND		
20	GND		

【Note 1】 Relation between LVDS signals and actual data shows below section (4-2).

【Note 2】 The shielding case is connected with signal GND.

4-2 Interface block diagram

Using receiver : DS90C364(National semiconductor)    Corresponding Transmitter : DS90C363, DS90C383(National semiconductor)



4-3. Backlight driving

CN2 : BHSR-02VS-1(JST)

Mating connector : SM02B-BHSS-1(JST)

Pin no.	symbol	function
1	$V_{HIGH}$	Power supply for lamp (High voltage side)
2	$V_{LOW}$	Power supply for lamp (Low voltage side)

5. Absolute Maximum Ratings

Parameter	Symbol	Condition	Ratings	Unit	Remark
Input voltage	$V_I$	$T_a=25^\circ\text{C}$	$-0.3 \sim V_{CC}+0.3$	V	【Note1】
+3.3V supply voltage	$V_{CC}$	$T_a=25^\circ\text{C}$	$0 \sim +4$	V	
Storage temperature	$T_{stg}$	—	$-25 \sim +60$	$^\circ\text{C}$	【Note2】
Operating temperature (Ambient)	$T_{opa}$	—	$0 \sim +50$	$^\circ\text{C}$	

【Note1】 LVDS signals

【Note2】 Humidity : 95%RH Max. at  $T_a \leq 40^\circ\text{C}$ .

Maximum wet-bulb temperature at  $39^\circ\text{C}$  or less at  $T_a > 40^\circ\text{C}$ .

No condensation.

6. Electrical Characteristics

6-1. TFT-LCD panel driving

$T_a=25^\circ\text{C}$

Parameter	Symbol	Min.	Typ.	Max.	Unit	Remark
$V_{CC}$ Supply voltage	$V_{CC}$	+3.0	+3.3	+3.6	V	【Note2】
	Current dissipation	$I_{CC}$	—	500	750	mA
Permissible input ripple voltage	$V_{RP}$	—	—	100	mV p-p	$V_{CC}=+3.3\text{V}$
Differential input threshold voltage	High	$V_{TH}$	—	+100	mV	$V_{CM}=+1.2\text{V}$ 【Note1】
	Low	$V_{TL}$	-100	—	mV	
Input current (High)	$I_{OH}$	—	—	$\pm 10$	$\mu\text{A}$	$V_I=2.4\text{V}$ $V_{CC}=3.6\text{V}$
Input current (Low)	$I_{OL}$	—	—	$\pm 10$	$\mu\text{A}$	$V_I=0\text{V}$ $V_{CC}=3.6\text{V}$
Terminal resistor	$R_T$	—	100	—	$\Omega$	Differential input

【Note1】  $V_{CM}$ : Common mode voltage of LVDS driver.

**【Note2】**

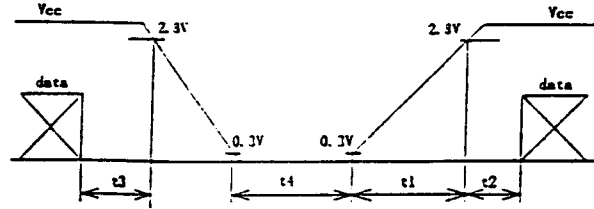
**On-off conditions for supply voltage**

$0 < t1 \leq 10 \text{ ms}$

$0 < t2 \leq 50 \text{ ms}$

$0 < t3 \leq 1 \text{ s}$

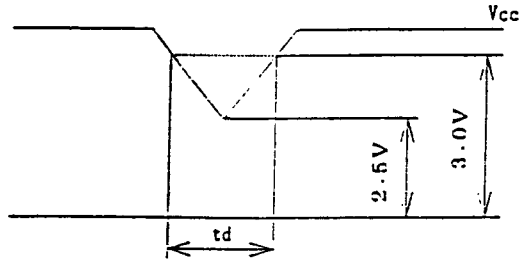
$t4 > 1 \text{ s}$



**Vcc-dip conditions**

1)  $2.5 \text{ V} \leq V_{cc} < 3.0 \text{ V}$   
 $t_d \leq 10 \text{ ms}$

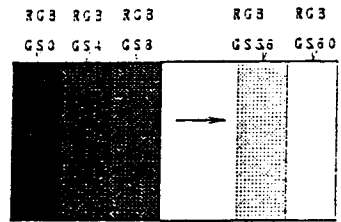
2)  $V_{cc} < 2.5 \text{ V}$



Vcc-dip conditions should also follow the On-off conditions for supply voltage

**【Note3】** Typical current situation : 16-gray-bar pattern.

$V_{cc} = +3.3 \text{ V}$



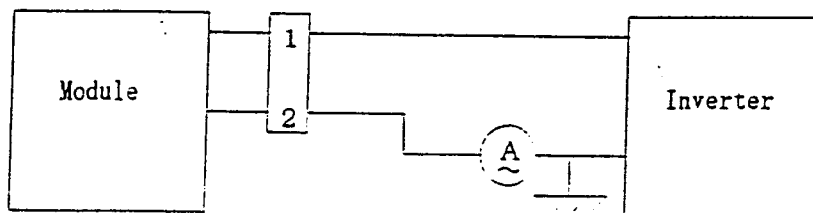
6-2. Backlight driving

The backlight system is an edge-lighting type with single CCFT (Cold Cathode Fluorescent Tube).

The characteristics of the lamp are shown in the following table.

Parameter	Symbol	Min.	Typ.	Max.	Unit	Remark
Lamp current range	$I_L$	2.0	4.0	6.0	mArms	【Note1】
Lamp voltage	$V_L$		670		Vrms	
Lamp power consumption	$P_L$	—	2.7	—	W	$Y_L=70\text{cd/m}^2$ 【Note2】
Lamp frequency	$F_L$	30	60	70	kHz	【Note3】
Kick-off voltage	$V_S$	—	—	1500	Vrms	$T_a=25^\circ\text{C}$
		—	—	1500	Vrms	$T_a=0^\circ\text{C}$
Lamp life time	$L_L$	10000	—	—	hour	【Note5】

【Note1】 Lamp current is measured with current meter for high frequency as shown below.



\* 2 pin is  $V_{LOW}$

【Note2】 Calculated Value for reference ( $I_L \times V_L$ )

【Note3】 Lamp frequency may produce interference with horizontal synchronous frequency, and this may cause beat on the display. Therefore lamp frequency shall be detached as much as possible from the horizontal synchronous frequency and from the harmonics of horizontal synchronous to avoid interference.

【Note4】 It is defined at 22pF for the ballast capacitor of a DC/AC inverter.

The voltage above this value should be applied to the lamp for more than 1 second to start-up. Otherwise the lamp may not be turned on.

【Note5】 Lamp life time is defined as the time when either ① or ② occurs in the continuous operation under the condition of  $T_a = 25^\circ\text{C}$  and  $I_L = 6.0\text{ mArms}$ .

① Brightness becomes 50 % of the original value under standard condition.

② Kick-off voltage at  $T_a = 0^\circ\text{C}$  exceeds maximum value, 1500V rms.

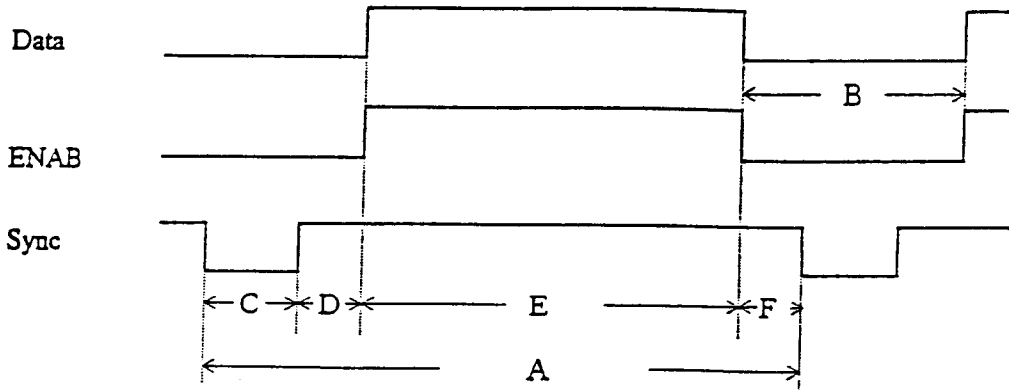
Note) The performance of the backlight, for example life time or brightness, is much influenced by the characteristics of the DC-AC inverter for the lamp. When you design or order the inverter, please make sure that a poor lighting caused by the mismatch of the backlight and the inverter (miss-lighting, flicker, etc.) never occur. When you confirm it, the module should be operated in the same condition as it is installed in your instrument.



7. Timing characteristics of input signals

7-1. Timing characteristics

(This is specified at digital outputs of LVDS driver.)



(Vertical)

Item (symbol)	Min.	Typ.	Max.	Unit	Remark
Vsync cycle ( $T_{VA}$ )	—	16.667	—	ms	Negative
	803	806		line	
Blanking period ( $T_{VB}$ )	35	38	—	line	
Sync pulse width ( $T_{VC}$ )	4	6	—	line	
Back porch ( $T_{VD}$ )	0	29		line	
Sync pulse width + Back porch ( $T_{VC}+T_{VD}$ )	35	35	35	line	
Active display area ( $T_{VE}$ )	768	768	768	line	
Front porch ( $T_{VF}$ )	0	3	—	line	

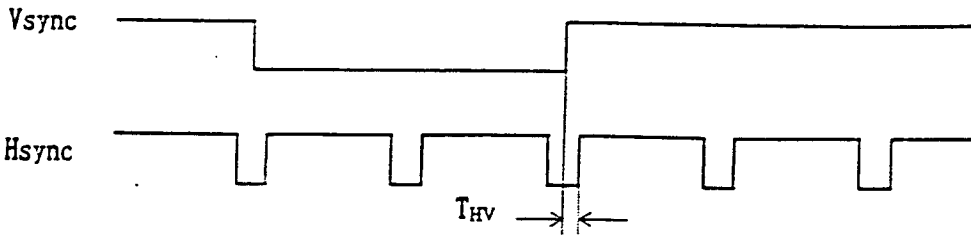
(Horizontal)

Item (symbol)	Min.	Typ.	Max.	Unit	Remark
Hsync cycle ( $T_{HA}$ )	19.2	20.677	—	$\mu s$	Negative
	1260	1344	1408	clock	
Blanking period ( $T_{HB}$ )	236	320	—	clock	
Sync pulse width ( $T_{HC}$ )	8	136	—	clock	
Back porch ( $T_{HD}$ )	0	160	312	clock	
Sync pulse width + Back porch ( $T_{HC}+T_{HD}$ )	$1500 - T_{HA}$	296	$T_{HA} - 1024$	clock	
Active display area ( $T_{HE}$ )	1024	1024	1024	clock	
Front porch ( $T_{HF}$ )	8	24	—	clock	

(Clock)

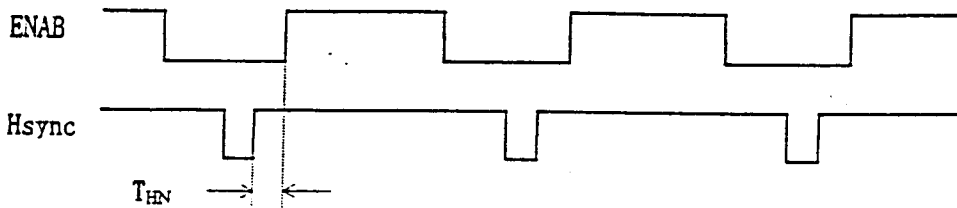
Item	Min.	Typ.	Max.	Unit	Remark
Frequency	50.0	65.0	65.0	MHz	【Note1】

Note) In case of lower frequency, the deterioration of display quality, flicker etc., may be occurred.



Item(symbol)	Min.	Typ.	Max.	Unit	Remark
Hsync-Vsync Phase difference ( $T_{HV}$ )	1	—	$T_{HA} - T_{HC}$	clock	

(Hsync-ENAB Phase difference)



Item	Min.	Typ.	Max.	Unit	Remark
( $T_{HN}$ )	0	—	312	clock	

## 7-2 Display position

Item	Standards	Beginning	Ending	Unit	Remark
Horizontal	rising edge of ENAB	0	1024	clock	
	rising edge of Hsync	296	1320	clock	【Note1】
Vertical	rising edge of Vsync	35	803	clock	

【Note1】 ENAB signal must be fixed to low.

【Note】

(Horizontal display direction)

When ENAB is fixed low, 296 clock are counted from Hsync negative edge and data from after are available. If you need other timing, please use ENAB signal.

(Vertical display direction)

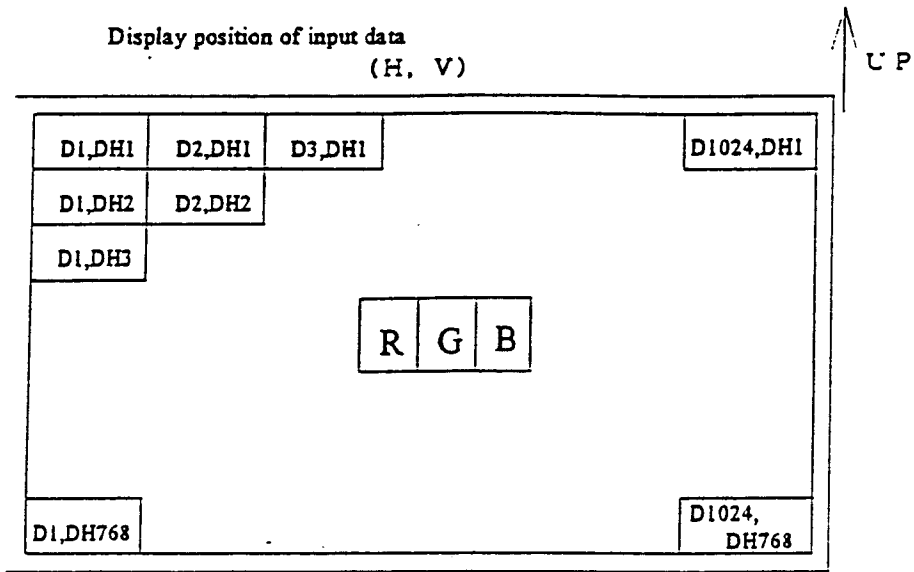
35 lines are counted from Vsync negative edge and data from next line are available.

(Note of ENAB signal)

ENAB could not be used for the purpose of the vertical display start timing.

Caution

Image will not be displayed on the right position otherwise.



8. Input Signals, Basic Display Colors and Gray Scale of Each Color

Colors &	Data signal																			
	Gray scale	Gray Scale	R0	R1	R2	R3	R4	R5	G0	G1	G2	G3	G4	G5	B0	B1	B2	B3	B4	B5
Basic Color	Black	—	0	0	0	0	0	0	0	0	0	0	0	0	0	0	0	0	0	0
	Blue	—	0	0	0	0	0	0	0	0	0	0	0	0	1	1	1	1	1	1
	Green	—	0	0	0	0	0	0	1	1	1	1	1	1	0	0	0	0	0	0
	Cyan	—	0	0	0	0	0	0	1	1	1	1	1	1	1	1	1	1	1	1
	Red	—	1	1	1	1	1	1	0	0	0	0	0	0	0	0	0	0	0	0
	Magenta	—	1	1	1	1	1	1	0	0	0	0	0	0	1	1	1	1	1	1
	Yellow	—	1	1	1	1	1	1	1	1	1	1	1	1	0	0	0	0	0	0
	White	—	1	1	1	1	1	1	1	1	1	1	1	1	1	1	1	1	1	1
Gray Scale of Red	Black	GS0	0	0	0	0	0	0	0	0	0	0	0	0	0	0	0	0	0	0
	↑	GS1	1	0	0	0	0	0	0	0	0	0	0	0	0	0	0	0	0	0
	Darker	GS2	0	1	0	0	0	0	0	0	0	0	0	0	0	0	0	0	0	0
	↑	↓			↓					↓					↓					
	↓	↓			↓					↓					↓					
	Brighter	GS61	1	0	1	1	1	1	0	0	0	0	0	0	0	0	0	0	0	0
	↓	GS62	0	1	1	1	1	1	0	0	0	0	0	0	0	0	0	0	0	0
	Red	GS63	1	1	1	1	1	1	0	0	0	0	0	0	0	0	0	0	0	0
Gray Scale of Green	Black	GS0	0	0	0	0	0	0	0	0	0	0	0	0	0	0	0	0	0	0
	↑	GS1	0	0	0	0	0	0	1	0	0	0	0	0	0	0	0	0	0	0
	Darker	GS2	0	0	0	0	0	0	0	1	0	0	0	0	0	0	0	0	0	0
	↑	↓			↓					↓					↓					
	↓	↓			↓					↓					↓					
	Brighter	GS61	0	0	0	0	0	0	1	0	1	1	1	1	0	0	0	0	0	0
	↓	GS62	0	0	0	0	0	0	0	1	1	1	1	1	0	0	0	0	0	0
	Green	GS63	0	0	0	0	0	0	1	1	1	1	1	1	0	0	0	0	0	0
Gray Scale of Blue	Black	GS0	0	0	0	0	0	0	0	0	0	0	0	0	0	0	0	0	0	0
	↑	GS1	0	0	0	0	0	0	0	0	0	0	0	0	1	0	0	0	0	0
	Darker	GS2	0	0	0	0	0	0	0	0	0	0	0	0	0	1	0	0	0	0
	↑	↓			↓					↓					↓					
	↓	↓			↓					↓					↓					
	Brighter	GS61	0	0	0	0	0	0	0	0	0	0	0	0	1	0	1	1	1	1
	↓	GS62	0	0	0	0	0	0	0	0	0	0	0	0	0	1	1	1	1	1
	Blue	GS63	0	0	0	0	0	0	0	0	0	0	0	0	1	1	1	1	1	1

0 : Low level voltage, 1 : High level voltage

Each basic color can be displayed in 64 gray scales from 6 bit data signals. According to the combination of total 18 bit data signals, the 262,144-color display can be achieved on the screen.

Ta=25°C, Vcc=+3.3V

Parameter		Symbol	Condition	Min.	Typ.	Max.	Unit	Remark
Viewing angle range	Horizontal	$\theta 21, \theta 22$	CR>10	45	—	—	Deg.	【Note1,4】
	Vertical	$\theta 11$		10	—	—	Deg.	
		$\theta 12$		30	—	—	Deg.	
Contrast ratio		CRn	$\theta = 0^\circ$	150	—	—	【Note2,4】	
		CRo	Optimum viewing angle	—	300	—		
Response time	Rise	$\tau r$	$\theta = 0^\circ$	—	15	—	ms	【Note3,4】
	Decay	$\tau d$		—	30	—	ms	
Chromaticity of white		x		—	0.313	—	【Note4】	
		y		—	0.329	—		
Luminance of white 【Note4】		Y <sub>L1</sub>	80	100	—	cd/m <sup>2</sup>	I <sub>L</sub> = 4.0mA <sub>rms</sub> F <sub>L</sub> = 60kHz	
		Y <sub>L2</sub>	100	130	—	cd/m <sup>2</sup>	I <sub>L</sub> = 6.0mA <sub>rms</sub> F <sub>L</sub> = 60kHz	
White Uniformity		$\delta w$	—	—	1.45	—	【Note5】	

※ The measurement shall be executed 30 minutes after lighting at rating. (typical condition : I<sub>L</sub> = 4.0 mA<sub>rms</sub>)  
The optical characteristics shall be measured in a dark room or equivalent state with the method shown in Fig.3 below.

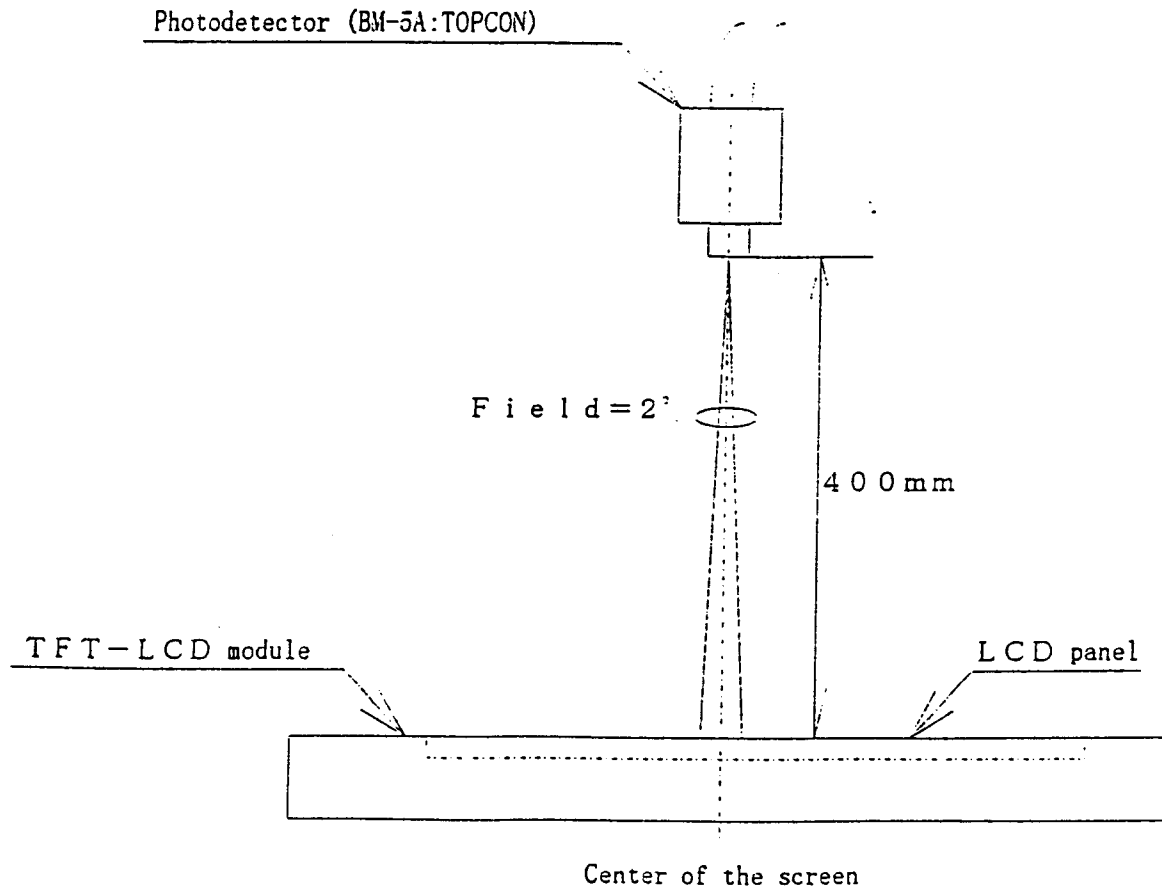
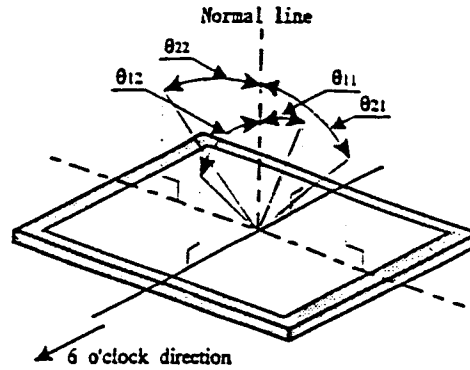


Fig.3 Optical characteristics measurement method



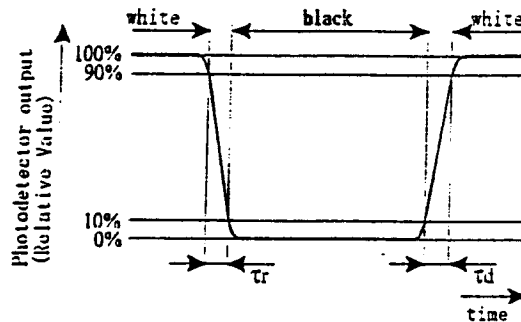
[Note2] Definition of contrast ratio:

The contrast ratio is defined as the following.

$$\text{Contrast Ratio (CR)} = \frac{\text{Luminance (brightness) with all pixels white}}{\text{Luminance (brightness) with all pixels black}}$$

[Note3] Definition of response time:

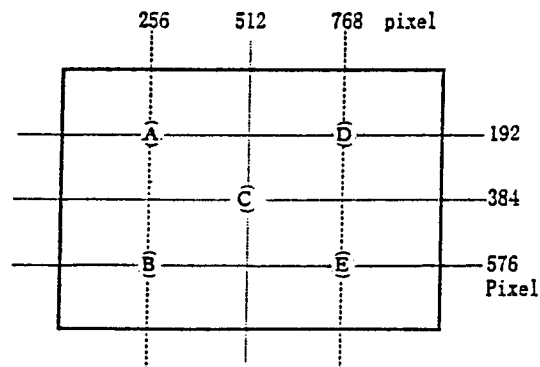
The response time is defined as the following figure and shall be measured by switching the input signal for "black" and "white".



[Note4] This shall be measured at center of the screen.

[Note5] Definition of white uniformity:

White uniformity is defined as the following with five measurements (A~E).



$$\delta_w = \frac{\text{Maximum Luminance of five points (brightness)}}{\text{Minimum Luminance of five points (brightness)}}$$

The display quality of the color TFT-LCD module shall be in compliance with the Incoming Inspection Standard.

#### 11. Handling Precautions

- a) Be sure to turn off the power supply when inserting or disconnecting the cable.
- b) Be sure to design the cabinet so that the module can be installed without any extra stress such as warp or twist.
- c) Since the front polarizer is easily damaged, pay attention not to scratch it.
- d) Wipe off water drop immediately. Long contact with water may cause discoloration or spots.
- e) When the panel surface is soiled, wipe it with absorbent cotton or other soft cloth.
- f) Since the panel is made of glass, it may break or crack if dropped or bumped on hard surface.  
Handle with care.
- g) Since CMOS LSI is used in this module, take care of static electricity and injure the human earth when handling.
- h) Observe all other precautionary requirements in handling components.
- i) This module has its circuitry PCBs on the rear side and should be handled carefully in order not to be stressed.
- j) Laminated film is attached to the module surface to prevent it from being scratched. Peel the film off slowly just before the use with strict attention to electrostatic charges. Ionized air shall be blown over during the action. Blow off the 'dust' on the polarizer by using an ionized nitrogen gun, etc..
- k) Black PET sheet covers some electric components and handle with special care to avoid mechanical stress and shock on this PET surface.

#### 12. Packing form

- a) Piling number of cartons : MAX.7
- b) Package quantity in one carton : 10 pcs
- c) Carton size : 426(W)×277(H)×340(D)mm
- d) Total mass of one carton filled with full modules : 7200 g

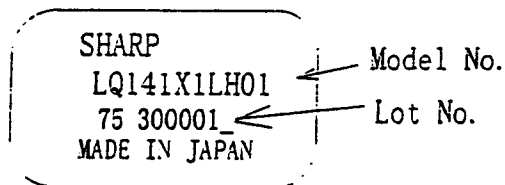
Packing form is shown in Fig.4

## 13. Reliability test items

No.	Test item	Conditions
1	High temperature storage test	Ta = 60°C 240h
2	Low temperature storage test	Ta = -25°C 240h
3	High temperature & high humidity operation test	Ta = 40°C ; 95 %RH 240h (No condensation)
4	High temperature operation test	Ta = 50°C 240h (The panel temp. must be less than 60°C)
5	Low temperature operation test	Ta = 0°C 240h
6	Vibration test (non- operating)	Frequency : 10~57Hz/Vibration width (one side):0.075mm : 58~500Hz/Gravity:9.8m/s <sup>2</sup> Sweep time : 11 minutes Test period : 3 hours (1 hour for each direction of X,Y,Z)
7	Shock test (non- operating)	Max. gravity : 490 m/s <sup>2</sup> Pulse width : 11 ms, sine wave Direction : ±X,±Y,±Z once for each direction.

## 14. Others

1) Lot No. Label:



2) Adjusting volume have been set optimally before shipment, so do not change any adjusted value.

If adjusted value is changed, the specification may not be satisfied.

3) Disassembling the module can cause permanent damage and should be strictly avoided.

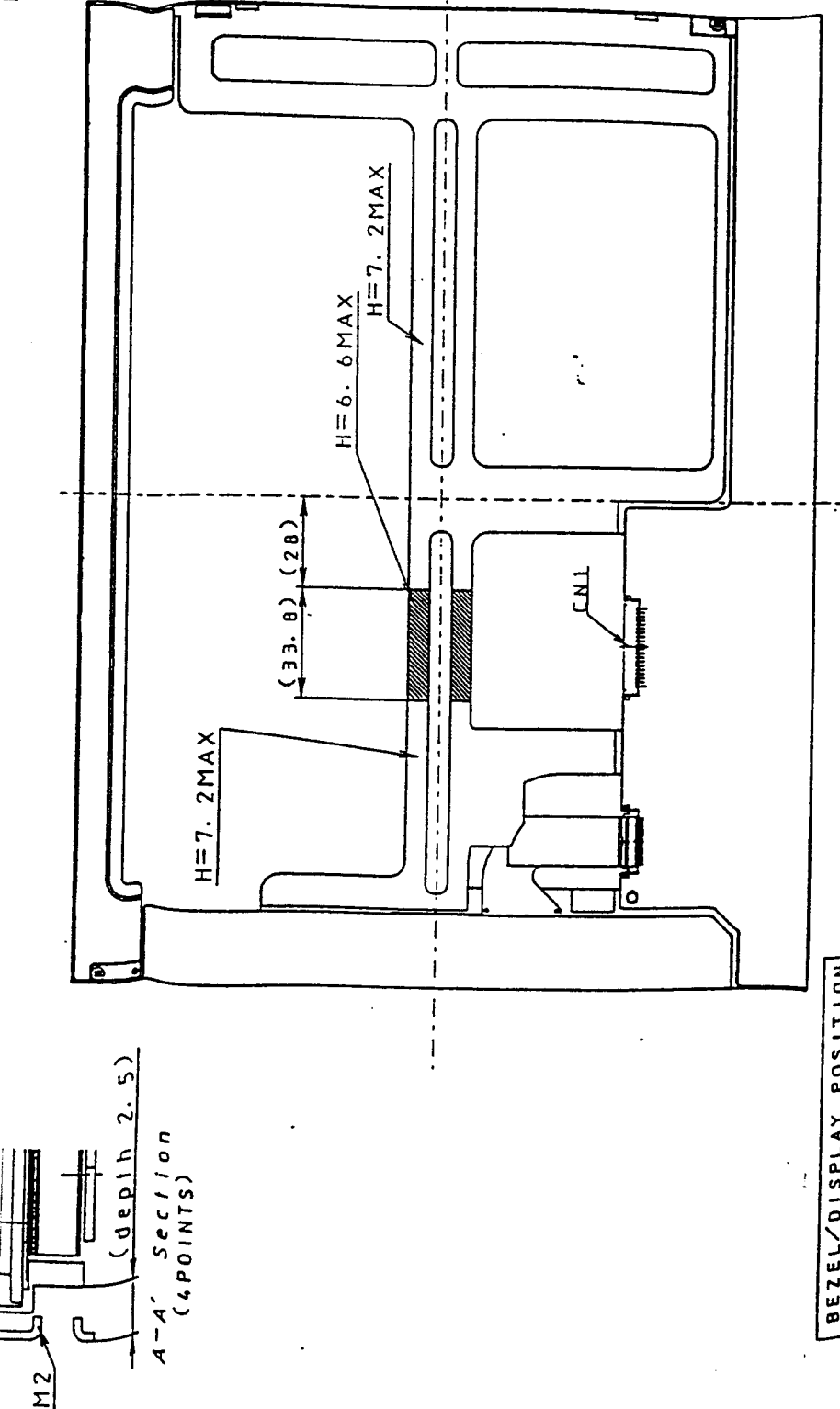
4) Please be careful since image retention may occur when a fixed pattern is displayed for a long time.

5) If any problem occurs in relation to the description of this specification , it shall be resolved through discussion with spirit of cooperation.





100.0



CN11F1-SEB20P-HF10 (JAE)  
 CN21BHSR-02VS-1 (JST)

NOTES

1. UNSPECIFIED TOLERANCE TO BE  $\pm 0.5$
2. WARP AND FLATING FOR PCB AND CHASSIS ARE EXCLUDED FROM THICKNESS AND DIMENSION OF THE UNIT.

- 1) TOLERANCE X-DIRECTION A:  $1.802 \pm 0.8$
- 2) TOLERANCE Y-DIRECTION B:  $1.814 \pm 0.8$
- 3) OBLIQUITY OF DISPLAY AREA  $IC-DI < 0.8$

Fig. 1 OUTLINE DIMENSIONS

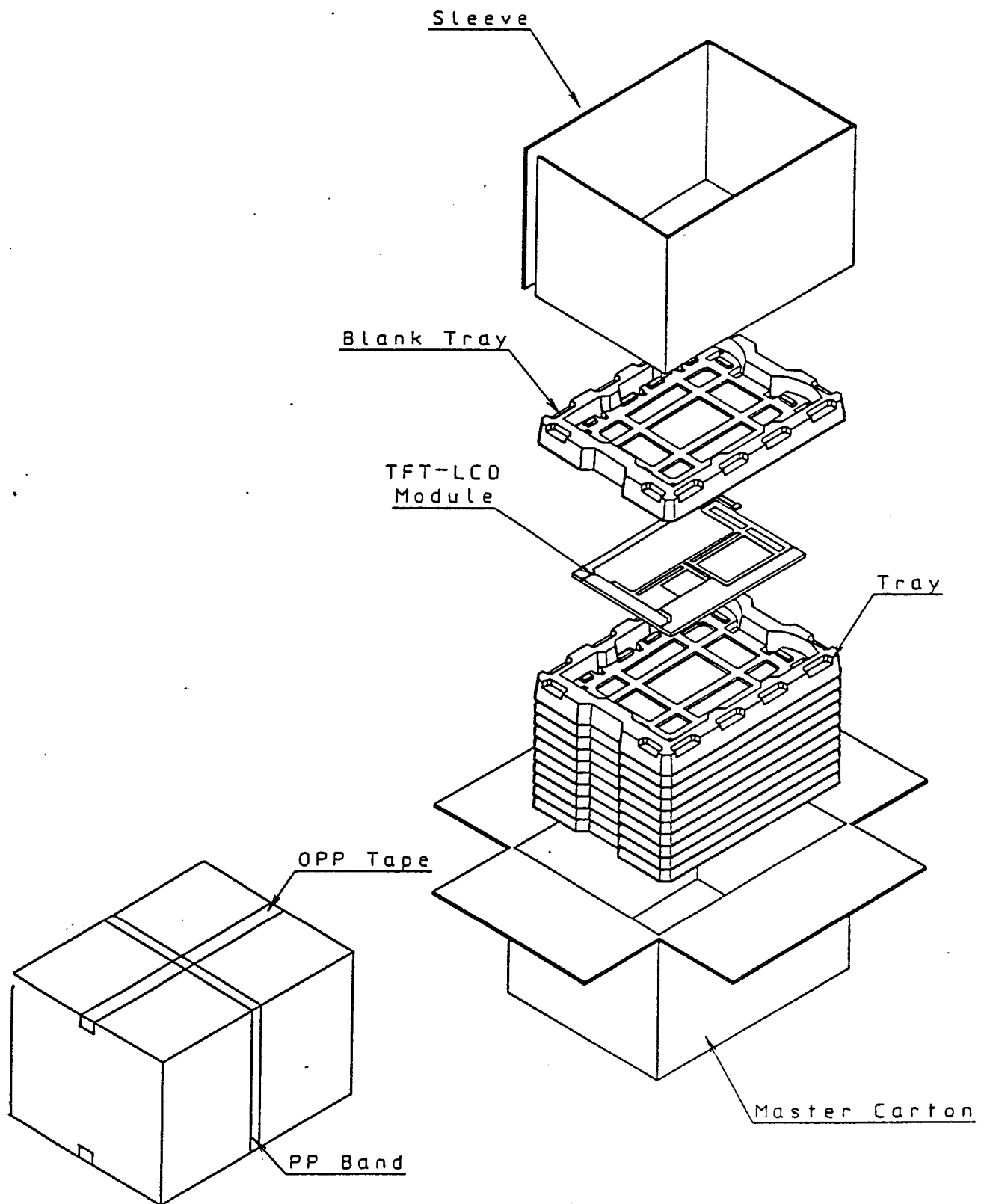


Fig4. Packing Form