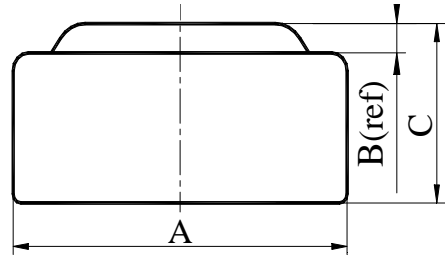
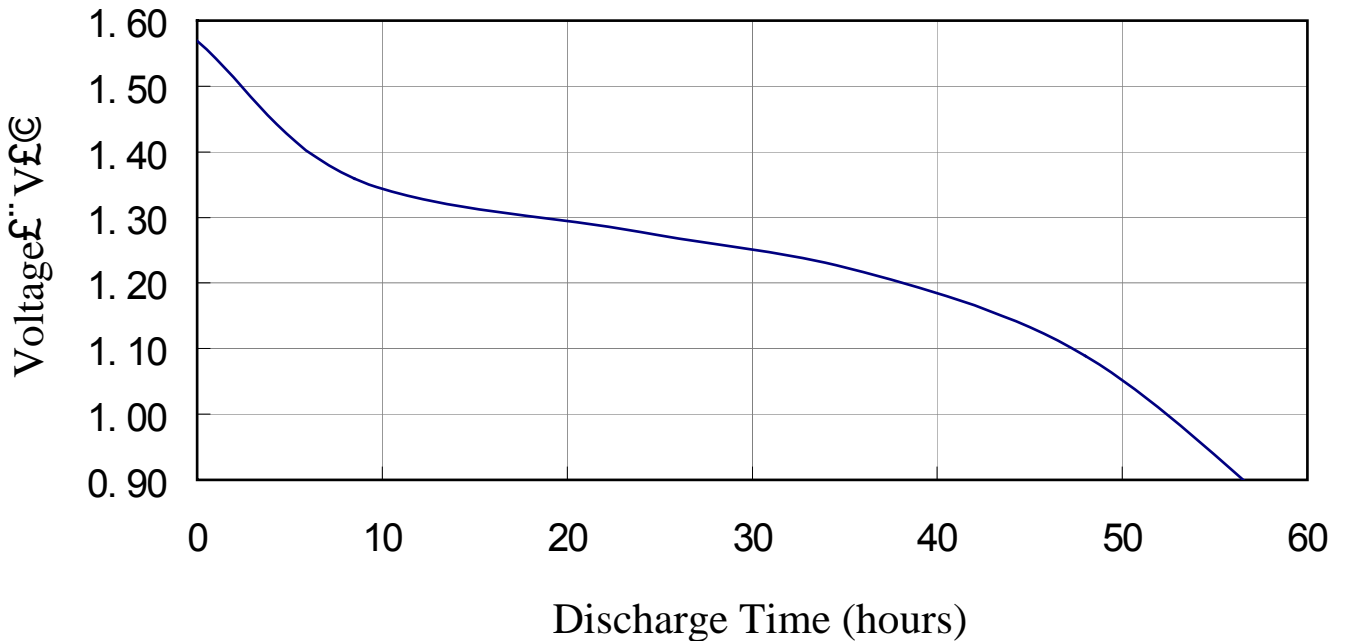


Chemical System : Alkaline manganese button batteries
Model No. : LR1130 (LR54 AG10 189)
Nominal Dimensions: $\Phi 11.60 \times 3.10 \text{mm}$
Nominal Voltage : 1.50V
Average Weight : 1.11g
Applications : Watch, Calculator,
 Electronic toy, etc.
Shelf Life : Not less than 90% of the
 service capacity, following
 1st year storage at 20°C.
Loading : 1000Ω(20°C)
Cut Off Voltage : 0.90V
Capacity : 72mAh



Dimensions	Unit: mm
A	11.40----11.60
B	0.40(ref)
C	2.90----3.10

Typical Discharge Characteristics at 20



Battery Testers DPB-860

Technical Parameter



Battery Types supported

Nominal Voltage Battery Types Loaded Resistance Operating Current

1.5V UM1.D

UM2.C

UM3.AA

UM4.AAA

UM5.

Small Button Cells 10 Ω 150 mA

9V 6F22 215 Ω 40 mA

Indication

(good) - (weak) - (replace)

Testing conditions 0 ~ 40 ,25 % ~ 80 % RH

Dimensions 55×53×23mm Weight 32 g