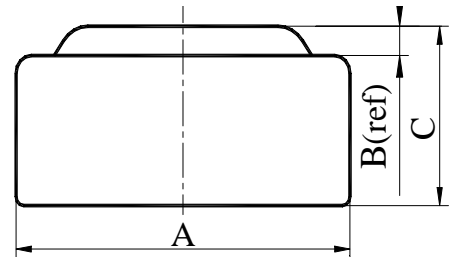
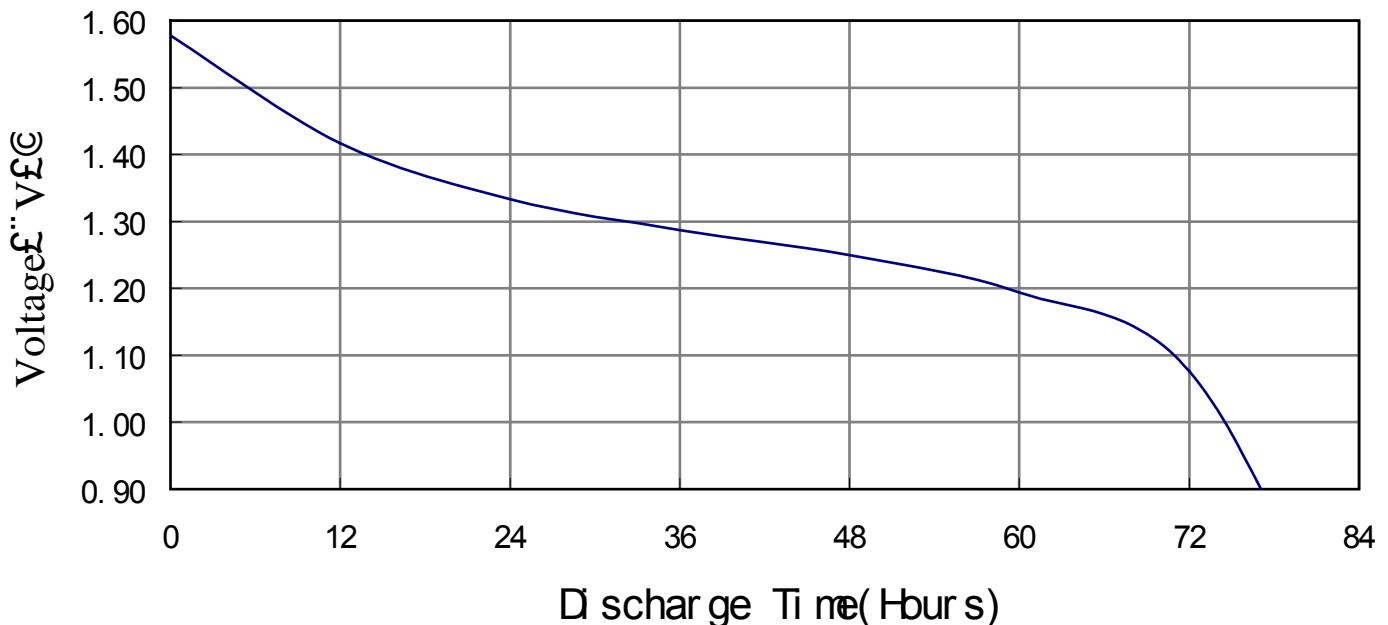


**Chemical System** : Alkaline manganese button batteries  
**Model No.** : LR1142 (LR43 AG12 186)  
**Nominal Dimensions** :  $\Phi 11.60 \times 4.20 \text{mm}$   
**Nominal Voltage** : 1.50V  
**Average Weight** : 1.50g  
**Applications** : Watch, Calculator, Electronic toy, etc.  
**Shelf Life** : Not less than 90% of the service capacity, following 1st year storage at 20°C.  
**Loading** : 1000Ω(20°C)  
**Cut Off Voltage** : 0.90V  
**Capacity** : 108mAh



Dimensions	Unit: mm
A	11.40----11.60
B	0.40(ref)
C	3.90----4.20

### Typical Discharge Characteristics at 20



SPEC.No.:REF-L43-0102

\*Manufacturer reserves the right to alter or amend the design, model and specification without prior notice.