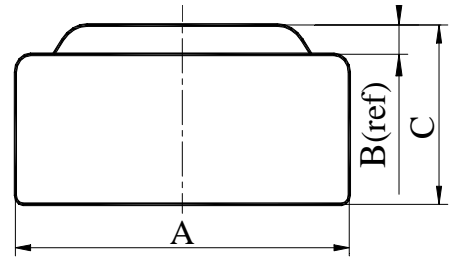


Chemical System : Alkaline manganese button batteries
Model No. : LR736 (LR41 AG3 192)
Nominal Dimensions: $\Phi 7.90 \times 3.60$ mm
Nominal Voltage : 1.50V
Average Weight : 0.61g
Applications : Watch, Calculator, Electronic toy, etc.
Shelf Life : Not less than 90% of the service capacity, following 1st year storage at 20°C.
Loading : 1000Ω(20°C)
Cut Off Voltage : 0.90V
Capacity : 31mAh



Dimensions	Unit: mm
A	7.75----7.90
B	0.40(ref)
C	3.30----3.60

Typical Discharge Characteristics at 20

