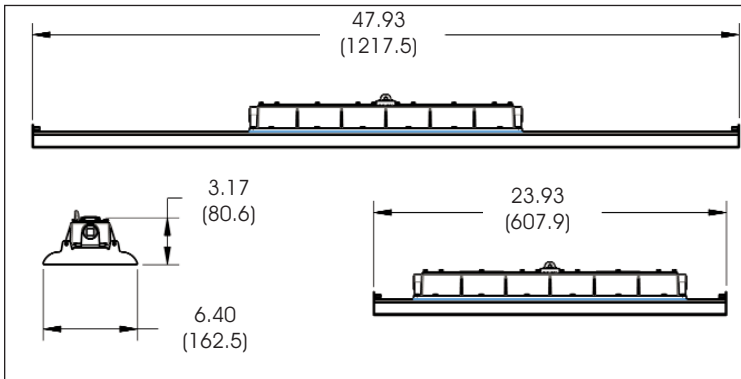




## SafeSite® Series LED Linear Fixture



### Certifications & Ratings:

- ▷ UL1598 – Standard for Luminaires
- ▷ UL1598A – Standard for Marine Vessels
- ▷ UL 844 – Hazardous Locations
- ▷ IP66 – Ingress Protection (Pending)
- ▷ NEMA 4X – Outdoor rated (Pending)

### Features & Benefits:

- ▷ Resistant to Water, Salt, Dust & Vibration
- ▷ Vibration tested to UL 844 for 35 hours @ 2,000 CPM
- ▷ Resistant up to 20 PSI of hose directed water
- ▷ Low power consumption
- ▷ Instant on/off operation
- ▷ Universal input (100-277 VAC), 50/60Hz
- ▷ Superior color rendition index compared to HPS, LPS, MV
- ▷ Mercury Free
- ▷ Resistant to shock
- ▷ Temperature compensation technology for longer life
- ▷ 70% lumen maintenance over 60,000 operating hours

### Ordering Codes:

Part Number	Length	Fixture Lumens	Class I, Div 2	Class II, Div 1	Class II, Div 2	Class III, Div 1	Class III, Div 2
LSD3C4D2P	2'	3,500	A / B / C / D		E / F / G		
LSD3C4M2P	4'	7,000	A / B / C / D		E / F / G		
LSF3C4D2P	2'	3,500	A / B / C / D	E / F / G	F / G	X	X
LSF3C4M2P	4'	7,000	A / B / C / D	E / F / G	F / G	X	X

### Ordering Code: Mounting Bracket

Part Number	Description
LSXW4	Swivel bracket

### Application

The first of its kind, Dialight's SafeSite® Series LED linear fixture was designed specifically to replace fluorescent lighting fixtures in industrial applications, hazardous locations & transit applications.

The SafeSite® LED Linear fixture's rugged solid state design makes it highly resistant to shock, vibration, its fully gasketed IP 66 rated enclosure makes it suitable for dust & wet locations, its 1598A rating guarantees added protection from salt water spray, while its superior design allows for increased mounting versatility and ease of installation.

### Mechanical Information

<b>Container Weight:</b>	17 lbs (7.71 kg) 4' 12 lbs (5.44 kg) 2'
<b>Mounting:</b>	Three 3/4" NPT openings LSXW4 optional swivel bracket

### Electrical specifications

<b>Operating Voltage:</b>	100-277VAC, 50/60 Hz
<b>Power Consumption:</b>	100W 4' version 50W 2' version
<b>Operating Temp:</b>	-40° F to +133° F (-40° C to +55° C)
<b>Harmonics:</b>	IEC 6100-3-2
<b>Surge / Lightning Protection:</b>	1 kV line to line 2 kV line to ground
<b>THD:</b>	< 15%
<b>Power Factor:</b>	> 0.95

### Power supply equipped with inline fuse

### Construction

<b>Body:</b>	Powder Coated Aluminum
<b>Lens:</b>	Polycarbonate

### Photometric Information

<b>CRI:</b>	> 70
<b>CCT(ftp)</b>	5,000K (cool white)
<b>IES Files:</b>	Available upon request

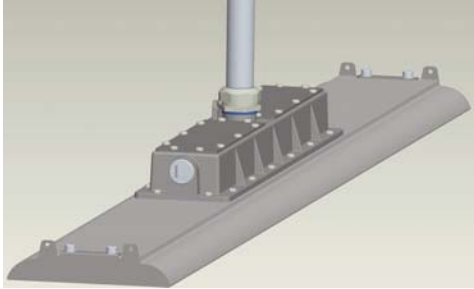


Meets Buy American

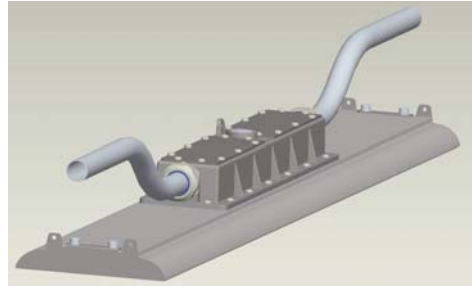
For projects requiring Buy American certification, consult factory for additional information and details

## SafeSite® Series LED Linear Mounting Options

Conduit Top Mount

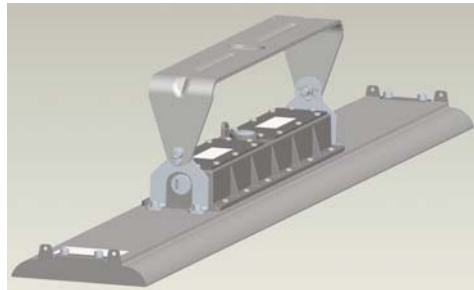


Conduit Side Mount



## SafeSite® Series LED Linear Mounting Accessories

LSXW4



Dialight reserves the right to make changes at any time in order to supply the best product possible.  
The most current version of this document will always be available at:  
[www.dialight.com/Assets/Brochures\\_And\\_Catalogs/Illumination/MDTFSSHZLD2X001.pdf](http://www.dialight.com/Assets/Brochures_And_Catalogs/Illumination/MDTFSSHZLD2X001.pdf)

MDTFSSHZLD2X001\_B