

**Samsung Secret**

Product Information

Customer : General**DATE : 23. May. 2011****SAMSUNG TFT-LCD****MODEL : LTA320AN01-D**

The Information Described in this Specification is Preliminary and can be changed without prior notice

LCD Business

Samsung Electronics Co . , LTD.

MODEL

LTA320AN01-D

Doc. No

06-002-G-20110523

Page

1 / 26

Contents**Samsung Secret**

Revision History	(3)
General Description	(4)
General Information	(4)
1. Absolute Maximum Ratings	(5)
2. Optical Characteristics	(6)
3. Electrical Characteristics	(9)
3.1 TFT LCD Module	
3.2 Back Light Unit	
3.3 Inverter Input & Specification	
4. Input Terminal Pin Assignment	(12)
4.1 Input Signal & Power	
4.2 Converter Input Pin Configuration	
4.3 Converter Input Power Sequence	
4.4 LVDS Interface	
4.5 Input Signals, Basic Display Colors and Gray Scale of Each Color	
5. Interface Timing	(17)
5.1 Timing Parameters (DE only mode)	
5.2 LVDS Input data Characteristics	
5.3 Timing Diagrams of interface Signal (DE only mode)	
5.4 Power ON/OFF Sequence	
6. Outline Dimension	(20)
7. Packing	(22)
8. Marking & Others	(23)
9. General Precaution	(24)
9.1 Handling	
9.2 Storage	
9.3 Operation	
9.4 Operation Condition Guide	
9.5 Others	

MODEL

LTA320AN01-D

Doc. No

06-002-G-20110523

Page

2 / 26

Revision History**Samsung Secret**

Date	Rev. No	Page	Summary
April.21. 2011	000	All	First issued

MODEL

LTA320AN01-D

Doc. No

06-002-G-20110523

Page

3 / 26

General Description

Samsung Secret

Description

LTA320AN01-D is a color active matrix liquid crystal display (LCD) that uses amorphous silicon TFT (Thin Film Transistor) as switching components. This model is composed of a TFT LCD panel, a driver circuit and a back light unit. The resolution of a 32.0" is 1366 x 768 and this model can display up to 16.7 million colors with wide viewing angle of 89° or higher in all directions. This panel is intended to support applications to provide an excellent performance for Flat Panel Display such as Home-alone Multimedia TFT-LCD TV and High Definition TV

Features

- RoHS compliance (Pb-free)
- High contrast ratio & aperture ratio with wide color gamut
- PVA (Patterned Vertical Align) mode
- Wide viewing angle ($\pm 178^\circ$)
- High speed response
- HD resolution (16:9)
- Low Power consumption
- Edge Type LED (Light Emitted Diode) BLU
- DE (Data Enable) mode
- 1Ch LVDS (Low Voltage Differential Signaling) interface (1pixel/clock)

General Information

Items	Specification	Unit	Note
Module Size	734.4 (H) X 430.3 (V)	mm	$\pm 1.0\text{mm}$
	12.8 (D max)		
Weight	6500(Max)	g	
Pixel Pitch	0.51075 (H) \times 0.17025 (V)	mm	
Active Display Area	697.6845 (H) X 392.256 (V)	mm	
Surface Treatment	Haze 7, Hard-coating(3H)		
Display Colors	8 bit – 16.7 M	colors	
Number of Pixels	1366 x 768	pixel	
Pixel Arrangement	RGB vertical stripe		
Display Mode	Normally Black		
Luminance of White	350 (Typ.)	cd/m ²	

MODEL

LTA320AN01-D

Doc. No

06-002-G-20110523

Page

4 / 26

Samsung Secret

1. Absolute Maximum Ratings

If the condition exceeds maximum ratings, it can cause malfunction or unrecoverable damage to the device.

Item	Symbol	Min.	Max.	Unit	Note
Power Supply Voltage	V_{DD}	10.8	13.2	V	(1)
Dimming Control	Max. Lum	-	3.3	V	
Storage temperature	T_{STG}	-20	65	°C	(2)
Operating temperature	T_{OPR}	0	50	°C	
Surface temperature	T_{SUR}	0	65	°C	(3)
Shock (non - operating)	X,Y,Z	-	50	G	(4)
Vibration (non - operating)	V_{NOP}	-	1.5	G	(5)

Note (1) $T_a = 25 \pm 2$ °C

(2) Temperature and relative humidity range are shown in the figure below.

a. 90 % RH Max. ($T_a \leq 39$ °C)

b. Relative Humidity is 90% or less. ($T_a > 39$ °C)

c. No condensation

(3) Although abnormal visual problems can be occurred in T_{SUR} range, the polarizer is not damaged in this range.

(4) 11ms, sine wave, one time for $\pm X$, $\pm Y$, $\pm Z$ axis

(5) 10-300 Hz, Sweep rate 10min, 30min for X,Y,Z axis

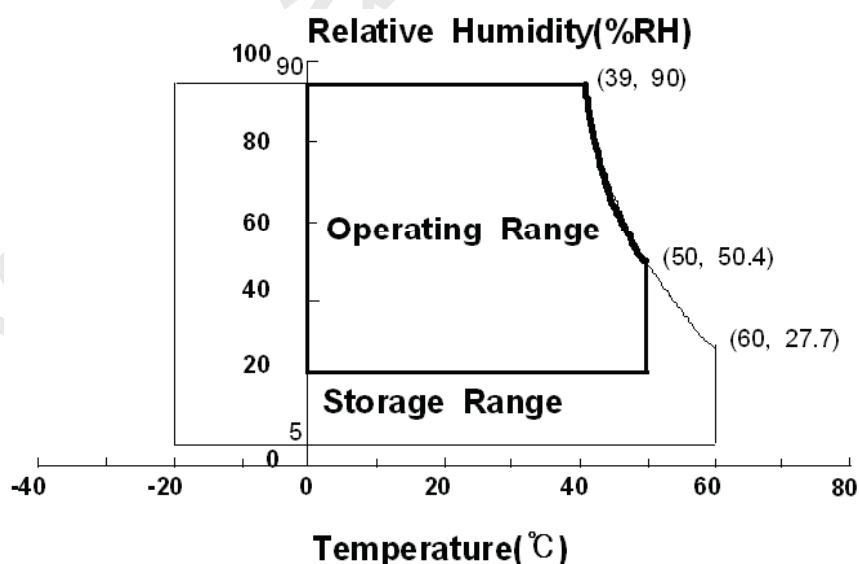


Fig. Temperature and Relative humidity range

MODEL

LTA320AN01-D

Doc. No

06-002-G-20110523

Page

5 / 26

2. Optical Characteristics

Samsung Secret

The optical characteristics should be measured in a dark room or equivalent.

Measuring equipment : TOPCON RD-80S, TOPCON SR-3, ELDIM EZ-Contrast

(Ta = 25 ± 2°C, VDD=12V, fv= 60Hz, f_{DCLK} = 75MHz, Lamp Current = 140mA)

Item	Symbol	Condition	Min.	Typ.	Max.	Unit	Note	
Contrast Ratio (Center of screen)	C/R		3000	4000	-		(1) SR-3	
Response Time	G-to-G	Tg	-	20	-	msec	(3) RD-80S	
Luminance of White (Center of screen)	Y _L		300	350	-	cd/m ²	(4) SR-3	
Color Chromaticity (CIE 1931)	Red	Rx	Normal q _{L,R} = 0 q _{U,D} = 0 Viewing Angle	0.656	TYP. -0.03	TYP. +0.03	(5),(6) SR-3	
		Ry		0.331				
	Green	Gx		0.292				
		Gy		0.577				
	Blue	Bx		0.141				
		By		0.082				
	White	Wx		0.280				
		Wy		0.290				
Color Gamut	-		65	68	-	%	(5) SR-3	
Color Temperature	-		-	10000	-	K		
Viewing Angle	Hor.	q _L	C/R≥10	79	89	-	Degree	(6) EZ-Contrast
		q _R		79	89	-		
	Ver.	q _U		79	89	-		
		q _D		79	89	-		
White Brightness Uniformity (9 Points)	B _{uni}		-	-	30	%	(2) SR-3	

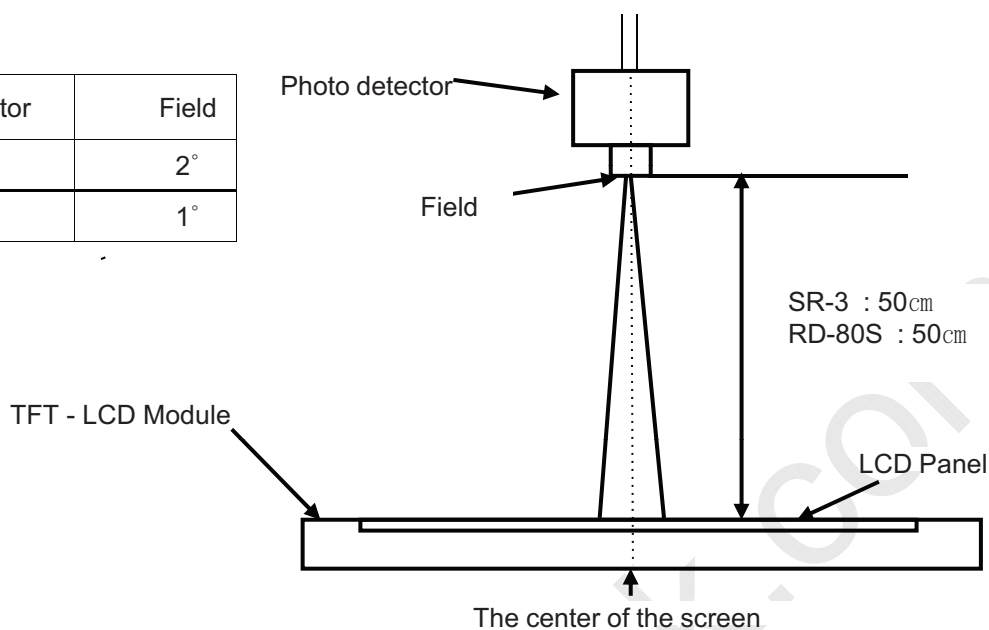
- Test Equipment Setup

The measurement should be executed in a stable, windless and dark room between 40min and 60min after lighting the back light at the given temperature for stabilization of the back light. This should be measured in the center of screen.

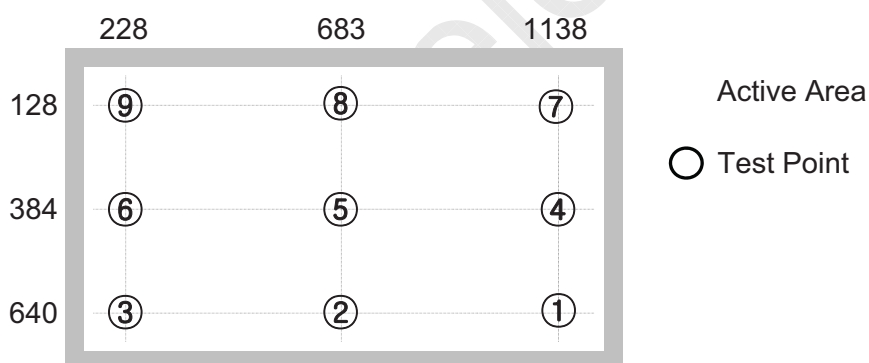
Environment condition : Ta = 25 ± 2 °C

Samsung Secret

Photo detector	Field
SR-3	2°
RD-80S	1°



- Definition of test point



Note (1) Definition of Contrast Ratio (C/R)

: Ratio of gray max (Gmax) & gray min (Gmin) at the center point ⑤ of the panel

$$C/R = \frac{G_{max}}{G_{min}}$$

Gmax : Luminance with all pixels white

Gmin : Luminance with all pixels black

Samsung Secret

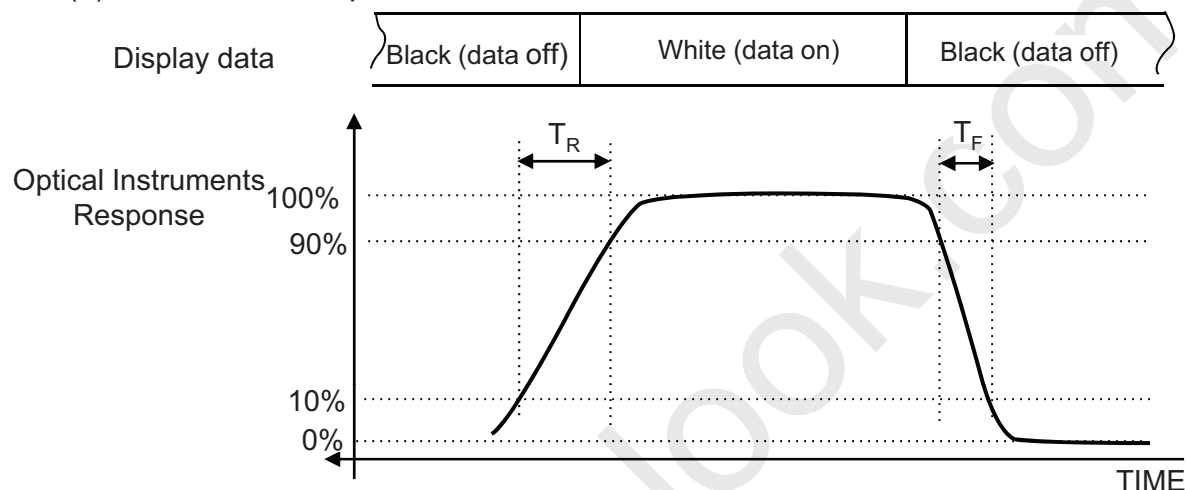
Note (2) Definition of 9 points brightness uniformity (Test pattern : Full White)

$$B_{uni} = 100 * \frac{(B_{max} - B_{min})}{B_{max}}$$

Bmax : Maximum brightness

Bmin : Minimum brightness

Note (3) Definition of Response time : Sum of Tr, Tf



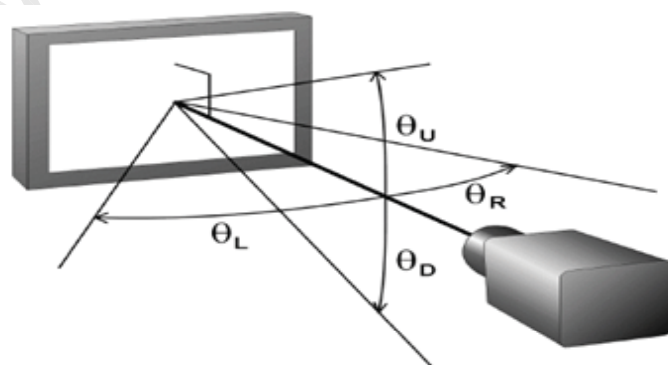
Note (4) Definition of Luminance of White : Luminance of white at center point ⑤

Note (5) Definition of Color Chromaticity (CIE 1931)

Color coordinate of Red, Green, Blue & White at center point ⑤

Note (6) Definition of Viewing Angle

: Viewing angle range (C/R ≥ 10)



MODEL

LTA320AN01-D

Doc. No

06-002-G-20110523

Page

8 / 26

Samsung Secret

3. Electrical Characteristics

3.1 TFT LCD Module

The connector for display data & timing signal should be connected.

$T_a = 25^\circ\text{C} \pm 2^\circ\text{C}$

Item	Symbol	Min.	Typ.	Max.	Unit	Note
Voltage of Power Supply	V_{DD}	10.8	12.0	13.2	V	(1)
Current of Power Supply	(a) Black	-	400	500	mA	(2),(3)
	(b) White	-	500	600	mA	
	(c) V-STRIPE	-	600	700	mA	
Vsync Frequency	f_V	50	60	66	Hz	
Hsync Frequency	f_H	44	48	53	kHz	
Main Frequency	f_{DCLK}	72	78	85	MHz	
Rush Current	I_{RUSH}	-	-	4	A	(4)

Note (1) The ripple voltage should be controlled under 10% of V_{DD} .

(2) $f_V=60\text{Hz}$, $f_{DCLK} = 75\text{MHz}$, $V_{DD} = 12.0\text{V}$, DC Current.

(3) Power dissipation check pattern (LCD Module only)

a) Black Pattern



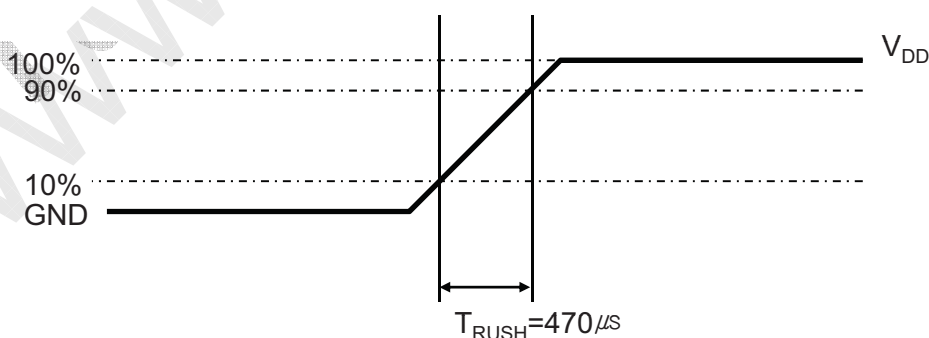
b) White Pattern



c) V-STRIPE



(4) Measurement Conditions



Rush Current I_{RUSH} can be measured when T_{RUSH} is $470 \mu\text{s}$.

MODEL

LTA320AN01-D

Doc. No

06-002-G-20110523

Page

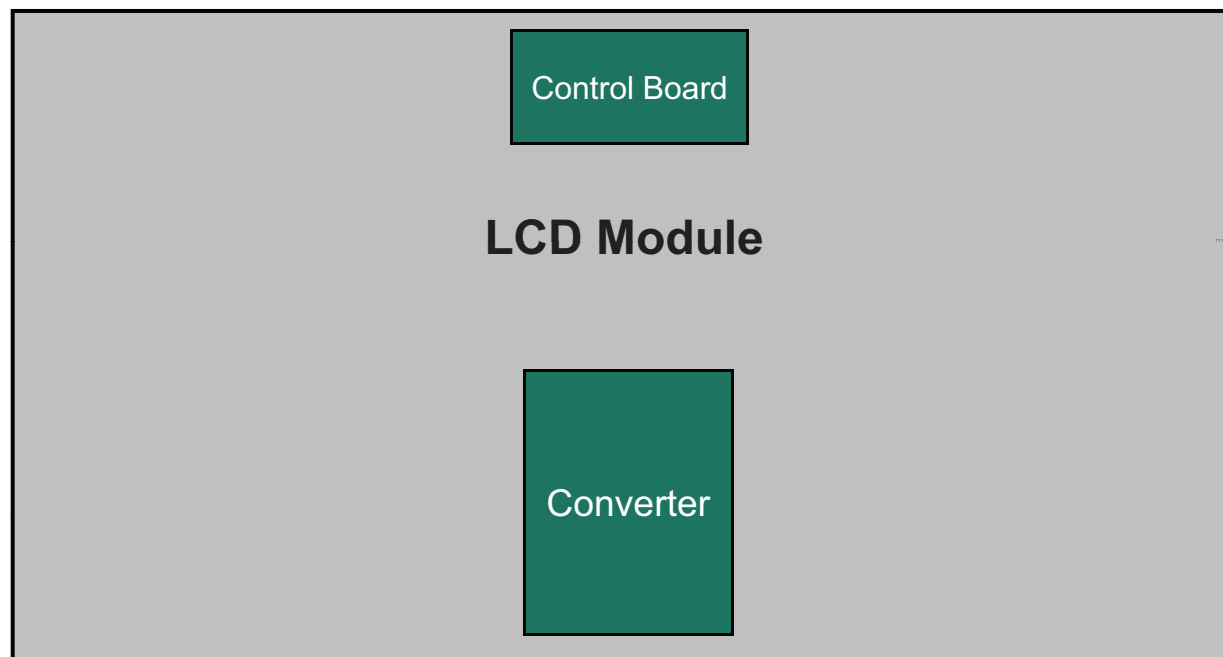
9 / 26

Samsung Secret

3.2 Back Light Unit

The back light unit contains Edge type White LEDs (Light Emitting Diode)

$T_a = 25 \pm 2^\circ\text{C}$



Item	Symbol	Min.	Typ.	Max.	Unit	Note
Operating Life Time	Hr	30,000	-	-	Hour	(1)

Note (1) It is defined as the time to take until the brightness reduces to 50% of its original value.

[Operating condition : $T_a = 25 \pm 2^\circ\text{C}$, For single lamp only.]

MODEL

LTA320AN01-D

Doc. No

06-002-G-20110523

Page

10 / 26

3.3 Converter Input Condition & Specification

Samsung Secret

Items	Symbol	Conditions	Specifications			Unit	Note
			Min.	Typ.	Max.		
Input Voltage	Vin	-	22	24	26	V	Ta=25±2 °C
Input Current	I _{RUSH}	Vin=24.0V Vdim =3.3V	-	-	2.1	A	
Output Current	I _{O,MAX}	Vin = 24.0V V dim =3.3 V	114	120	126	mArms	
Backlight On/Off	ON	Vin=24.0 V	2.4	-	5.5	V	(2)
	OFF	Vin=24.0 V	-0.3	-	0.8		
Dimming Range	V _{DIM}	Vin :22~26V	0	-	3.3	V	
Dimming Duty Output	D max	Vin=24V Dim:3.3V	100	-	-	%	(2)
	D min	Vin=24V Dim:0V	-	1	-		
Dimming Frequency	F _{PWM}	Vin=24.0 V	140	150	160	Hz	(2)
External Dimming Duty Range	EX_Dim	Min	1	-	100	%	
External Dimming Frequency Range	F _{EX_PWM}	Vin=22.0~26.0 V	95	-	200	Hz	Dim Pin(#13) : Floating
External Dimming Signal Level	V _{PWM}	High (ON)	2.4	-	5.5	V	
		Low (Off)	-0.3	-	0.8		

Note) Power Consumption is measured when 350 [cd/m] of luminance which is the typical luminance.

(1) All data is measured after 120min warm-up.

(2) only use #Pin 13

- Additional Appendix for Supply Current & Power consumption

Items	Symbol	Conditions	Min.	Typ.	Max.	Unit
Input Current	lin _ overshoot	Vin = 24V, Dim=3.3V (Within 1hr at BLU on)	-	1.35	1.39	A
	lin _ saturation	Vin = 24V, Dim=3.3V (After 1hr Aging)	-	1.31	1.35	A
Power Consumption (Back light)	P _ Inrush	Vin=24.0V, Vdim = 3.3V	-	-	50.5	Watt
	P _ overshoot	Vin = 24V, Dim=3.3V (Within 1hr at BLU on)	-	32.5	33.4	Watt
	P _ saturation	Vin = 24V, Dim=3.3V (After 1hr Aging)	-	31.5	32.5	Watt

MODEL	LTA320AN01-D	Doc. No	06-002-G-20110523	Page	11 / 26
-------	--------------	---------	-------------------	------	---------

4. Input Terminal Pin Assignment

Samsung Secret

4.1. Input Signal & Power

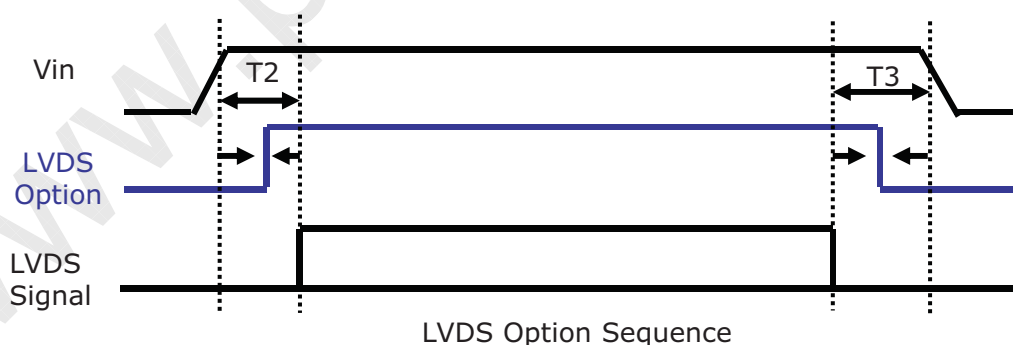
Connector :IS100-L300-C23

PIN No.	Description	PIN No.	Description
1	No Connection (Note1)	16	GND
2	No Connection (Note1)	17	RxIN3-
3	No Connection (Note1)	18	RxIN3+
4	GND	19	GND
5	RxIN0-	20	No Connection (Note1)
6	RxIN0+	21	LVDS OPTION (Note 2)
7	GND	22	No Connection (Note1)
8	RxIN1-	23	GND
9	RxIN1+	24	GND
10	GND	25	No Connection (Note 1)
11	RxIN2-	26	Vin
12	RxIN2+	27	Vin
13	GND	28	Vin
14	RxCLK-	29	Vin
15	RxCLK+	30	Vin

Note1) No Connection: **This PINS are only used ONLY for SAMSUNG.**

Note2) LVDS OPTION : If this PIN is HIGH (3.3 V) → Normal LVDS format
 LOW (GND) → JEIDA LVDS format

SEQUENCE : On = $V_{DD}(T1) \geq LVDS\ Option \geq Interface\ Signal(T2)$
 OFF = $Interface\ Signal(T3) \geq LVDS\ Option \geq V_{DD}$



Samsung Secret

Note(1) Pin number starts from Left side

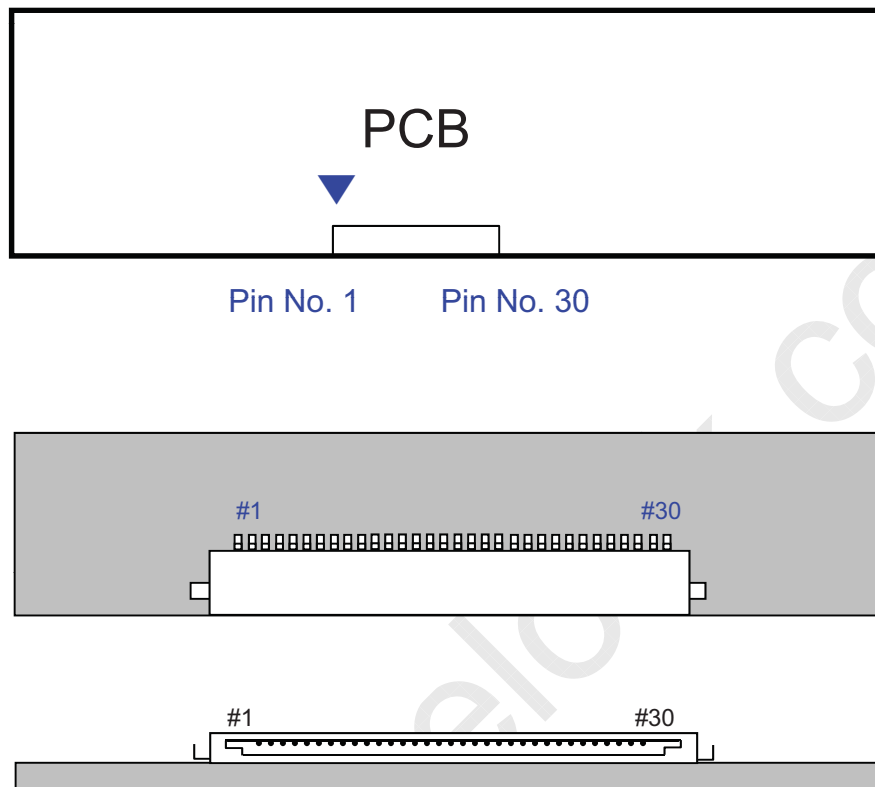


Fig. Connector diagram

- Power GND pins should be connected to the LCD's metal chassis.
- All power input pins should be connected together.
- All NC pin should be separated from other signal or power.

4.2. Converter Input Pin Configuration

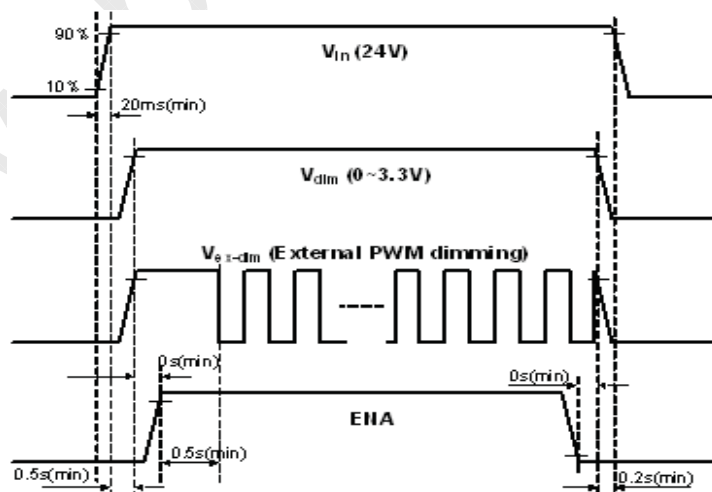
Samsung Secret

Connector : Yeon-ho, 20022WR-14B1

Pin No.	Pin Configuration(FUNCTION)
	Master
1	24 V
2	24 V
3	24 V
4	24 V
5	24 V
6	GND
7	GND
8	GND
9	GND
10	GND
11	Error Out
12	Backlight On /Off [ON:2.4 - 5.5 V, OFF: -0.3 - 0.8 V]
13	Dimming Control [0V:Min, 3.3V:Max] *Note(1)
14	External PWM [1~100%] *Note(1)

Note(1) If use Dimming Control, Pin 14 Must be N.C
 If use External PWM, Pin 13 Must be N.C

4.3. Converter Input Power Sequence



Note) SEQUENCE : ON = V_{in}(24V) > Dimming Control ≥ Backlight On/Off
 OFF = Backlight On/Off ≥ Dimming Control > V_{in}(24V)

4.4 LVDS Interface

Samsung Secret

- LVDS Receiver : Tcon (merged)

- Data Format (JEIDA & VESA)

	LVDS pin	JEIDA -DATA	VESA -DATA
TxOUT/RxIN0	TxIN/RxOUT0	R2	R0
	TxIN/RxOUT1	R3	R1
	TxIN/RxOUT2	R4	R2
	TxIN/RxOUT3	R5	R3
	TxIN/RxOUT4	R6	R4
	TxIN/RxOUT6	R7	R5
	TxIN/RxOUT7	G2	G0
TxOUT/RxIN1	TxIN/RxOUT8	G3	G1
	TxIN/RxOUT9	G4	G2
	TxIN/RxOUT12	G5	G3
	TxIN/RxOUT13	G6	G4
	TxIN/RxOUT14	G7	G5
	TxIN/RxOUT15	B2	B0
	TxIN/RxOUT18	B3	B1
TxOUT/RxIN2	TxIN/RxOUT19	B4	B2
	TxIN/RxOUT20	B5	B3
	TxIN/RxOUT21	B6	B4
	TxIN/RxOUT22	B7	B5
	TxIN/RxOUT24	HSYNC	HSYNC
	TxIN/RxOUT25	VSYNC	VSYNC
	TxIN/RxOUT26	DEN	DEN
TxOUT/RxIN3	TxIN/RxOUT27	R0	R6
	TxIN/RxOUT5	R1	R7
	TxIN/RxOUT10	G0	G6
	TxIN/RxOUT11	G1	G7
	TxIN/RxOUT16	B0	B6
	TxIN/RxOUT17	B1	B7
	TxIN/RxOUT23	RESERVED	RESERVED

MODEL

LTA320AN01-D

Doc. No

06-002-G-20110523

Page

15 / 26

Samsung Secret

4.5 Input Signals, Basic Display Colors and Gray Scale of Each Color

COLOR	DISPLAY (8bit)	DATA SIGNAL																								GRAY SCALE LEVEL
		RED							GREEN							BLUE										
		R0	R1	R2	R3	R4	R5	R6	R7	G0	G1	G2	G3	G4	G5	G6	G7	B0	B1	B2	B3	B4	B5	B6	B7	
BASIC COLOR	BLACK	0	0	0	0	0	0	0	0	0	0	0	0	0	0	0	0	0	0	0	0	0	0	0	0	-
	BLUE	0	0	0	0	0	0	0	0	0	0	0	0	0	0	0	0	1	1	1	1	1	1	1	1	-
	GREEN	0	0	0	0	0	0	0	0	1	1	1	1	1	1	1	1	0	0	0	0	0	0	0	0	-
	CYAN	0	0	0	0	0	0	0	0	1	1	1	1	1	1	1	1	1	1	1	1	1	1	1	1	-
	RED	1	1	1	1	1	1	1	1	0	0	0	0	0	0	0	0	0	0	0	0	0	0	0	0	-
	MAGENTA	1	1	1	1	1	1	1	1	0	0	0	0	0	0	0	0	1	1	1	1	1	1	1	1	-
	YELLOW	1	1	1	1	1	1	1	1	1	1	1	1	1	1	1	1	0	0	0	0	0	0	0	0	-
	WHITE	1	1	1	1	1	1	1	1	1	1	1	1	1	1	1	1	1	1	1	1	1	1	1	1	-
GRAY SCALE OF RED	BLACK	0	0	0	0	0	0	0	0	0	0	0	0	0	0	0	0	0	0	0	0	0	0	0	R0	
	DARK ↑	1	0	0	0	0	0	0	0	0	0	0	0	0	0	0	0	0	0	0	0	0	0	0	R1	
		0	1	0	0	0	0	0	0	0	0	0	0	0	0	0	0	0	0	0	0	0	0	0	R2	
		:	:	:	:	:	:	:	:	:	:	:	:	:	:	:	:	:	:	:	:	:	:	:	R3~R252	
		:	:	:	:	:	:	:	:	:	:	:	:	:	:	:	:	:	:	:	:	:	:	:		
	LIGHT ↓	1	0	1	1	1	1	1	1	0	0	0	0	0	0	0	0	0	0	0	0	0	0	0	R253	
		0	1	1	1	1	1	1	1	0	0	0	0	0	0	0	0	0	0	0	0	0	0	0	R254	
	RED	1	1	1	1	1	1	1	1	0	0	0	0	0	0	0	0	0	0	0	0	0	0	0	R255	
GRAY SCALE OF GREEN	BLACK	0	0	0	0	0	0	0	0	0	0	0	0	0	0	0	0	0	0	0	0	0	0	0	G0	
	DARK ↑	0	0	0	0	0	0	0	0	1	0	0	0	0	0	0	0	0	0	0	0	0	0	0	G1	
		0	0	0	0	0	0	0	0	0	1	0	0	0	0	0	0	0	0	0	0	0	0	0	G2	
		:	:	:	:	:	:	:	:	:	:	:	:	:	:	:	:	:	:	:	:	:	:	:	G3~G252	
		:	:	:	:	:	:	:	:	:	:	:	:	:	:	:	:	:	:	:	:	:	:	:		
	LIGHT ↓	0	0	0	0	0	0	0	0	1	0	1	1	1	1	1	1	0	0	0	0	0	0	0	G253	
		0	0	0	0	0	0	0	0	0	1	1	1	1	1	1	1	0	0	0	0	0	0	0	G254	
	GREEN	0	0	0	0	0	0	0	0	1	1	1	1	1	1	1	1	0	0	0	0	0	0	0	G255	
GRAY SCALE OF BLUE	BLACK	0	0	0	0	0	0	0	0	0	0	0	0	0	0	0	0	0	0	0	0	0	0	0	B0	
	DARK ↑	0	0	0	0	0	0	0	0	0	0	0	0	0	0	0	0	1	0	0	0	0	0	0	B1	
		0	0	0	0	0	0	0	0	0	0	0	0	0	0	0	0	0	1	0	0	0	0	0	B2	
		:	:	:	:	:	:	:	:	:	:	:	:	:	:	:	:	:	:	:	:	:	:	:	B3~B252	
		:	:	:	:	:	:	:	:	:	:	:	:	:	:	:	:	:	:	:	:	:	:	:		
	LIGHT ↓	0	0	0	0	0	0	0	0	0	0	0	0	0	0	0	0	1	0	1	1	1	1	1	B253	
		0	0	0	0	0	0	0	0	0	0	0	0	0	0	0	0	0	1	1	1	1	1	1	B254	
	BLUE	0	0	0	0	0	0	0	0	0	0	0	0	0	0	0	0	1	1	1	1	1	1	1	B255	

Note) Definition of Gray :

Rn : Red Gray, Gn : Green Gray, Bn : Blue Gray (n = Gray level)

Input Signal : 0 = Low level voltage, 1 = High level voltage

MODEL	LTA320AN01-D	Doc. No	06-002-G-20110523	Page	16 / 26
-------	--------------	---------	-------------------	------	---------

5. Interface Timing

Samsung Secret

5.1 Timing Parameters (DE mode)

SIGNAL	ITEM	SYMBOL	MIN.	TYP.	MAX.	Unit	NOTE
Clock	Frequency	$1/T_C$	72	78	85	MHz	-
Hsync		F_H	44	48	53	KHz	-
Vsync		F_V	50	60	66	Hz	-
Vertical Display Term	Active Display Period	T_{VD}	-	768	-	Lines	-
	Vertical Total	T_V	780	802	1200	Lines	-
Horizontal Display Term	Active Display Period	T_{HD}	-	1366	-	Clocks	-
	Horizontal Total	T_H	1460	1624	2000	clocks	-

Note) This product is DE mode. But the Hsync & Vsync signal must be inputted

(1) Test Point : TTL control signal and CLK at LVDS Tx input terminal in system

(2) Internal VDD = 3.3V

(3) Spread spectrum

- Modulation rate (max) : $\pm 1.5\%$, Modulation Frequency : under 100KHz

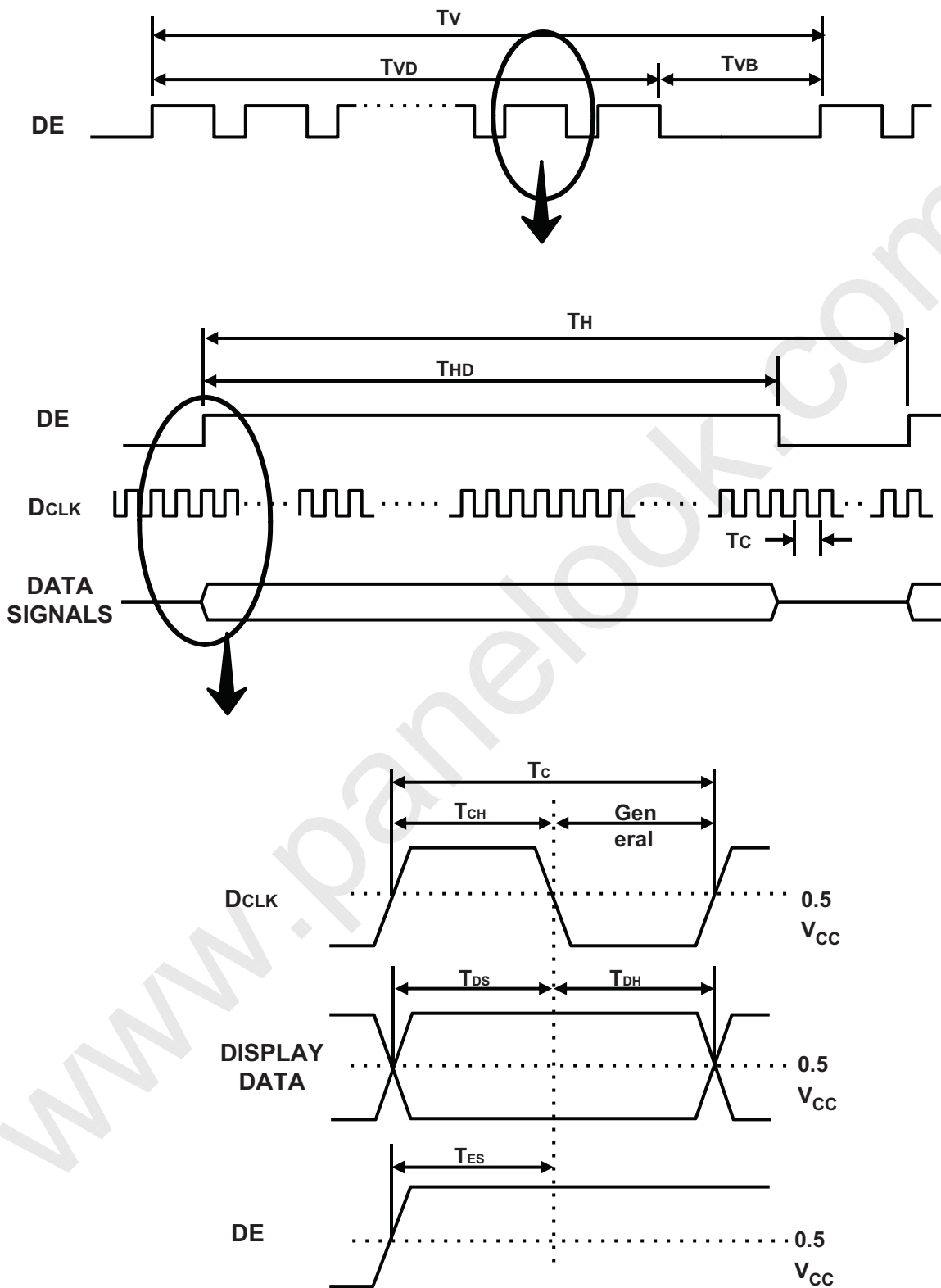
5.2 LVDS Input Data Characteristics

ITEM		SYMBOL	Min.	Typ.	Max.	UNIT	NOTE
Input Data Position	$F_{IN}=85\text{MHz}$	t_{RSM}	-	-	400	ps	
		t_{RLM}	-	-	400	ps	
Input common mode voltage		V_{CM}	0.2	1.2	2.0	V	-
Differential Input Voltage		$ V_{ID} $	100	-	-	mV	-

Note) When the skew is measured the Spread Spectrum should be 0%

5.2 Timing diagrams of interface signal (DE mode)

Samsung Secret

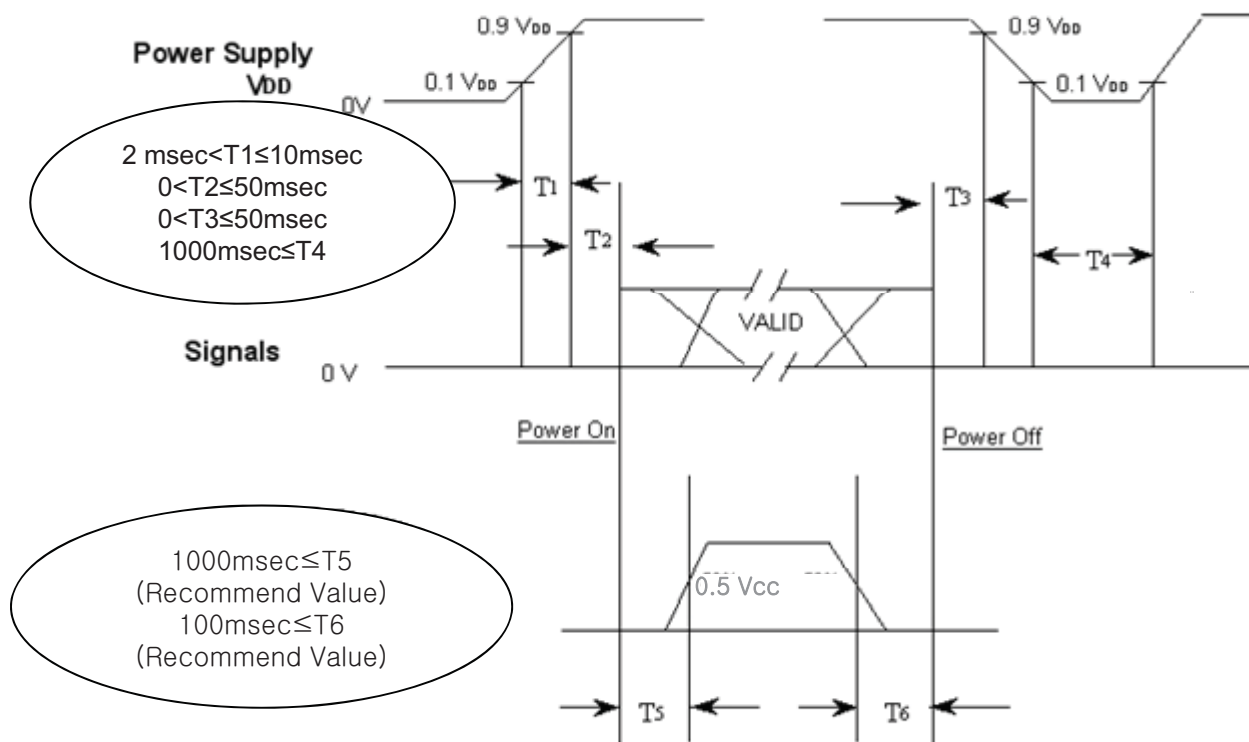


MODEL	LTA320AN01-D	Doc. No	06-002-G-20110523	Page	18 / 26
-------	--------------	---------	-------------------	------	---------

5.3 Power ON/OFF Sequence

Samsung Secret

To prevent a latch-up or DC operation of the LCD Module, the power on/off sequence should be as the diagram below.



T_1 : V_{DD} rising time from 10% to 90%

T_2 : The time from V_{DD} to valid data at power ON.

T_3 : The time from valid data off to V_{DD} off at power Off.

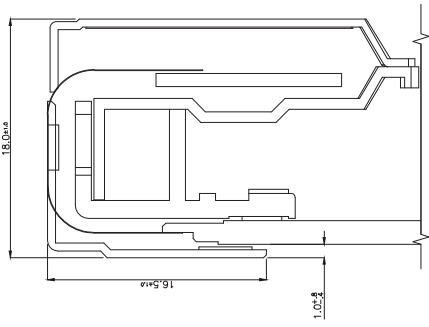
T_4 : V_{DD} off time for Windows restart

T_5 : The time from valid data to B/L enable at power ON.

T_6 : The time from valid data off to B/L disable at power Off.

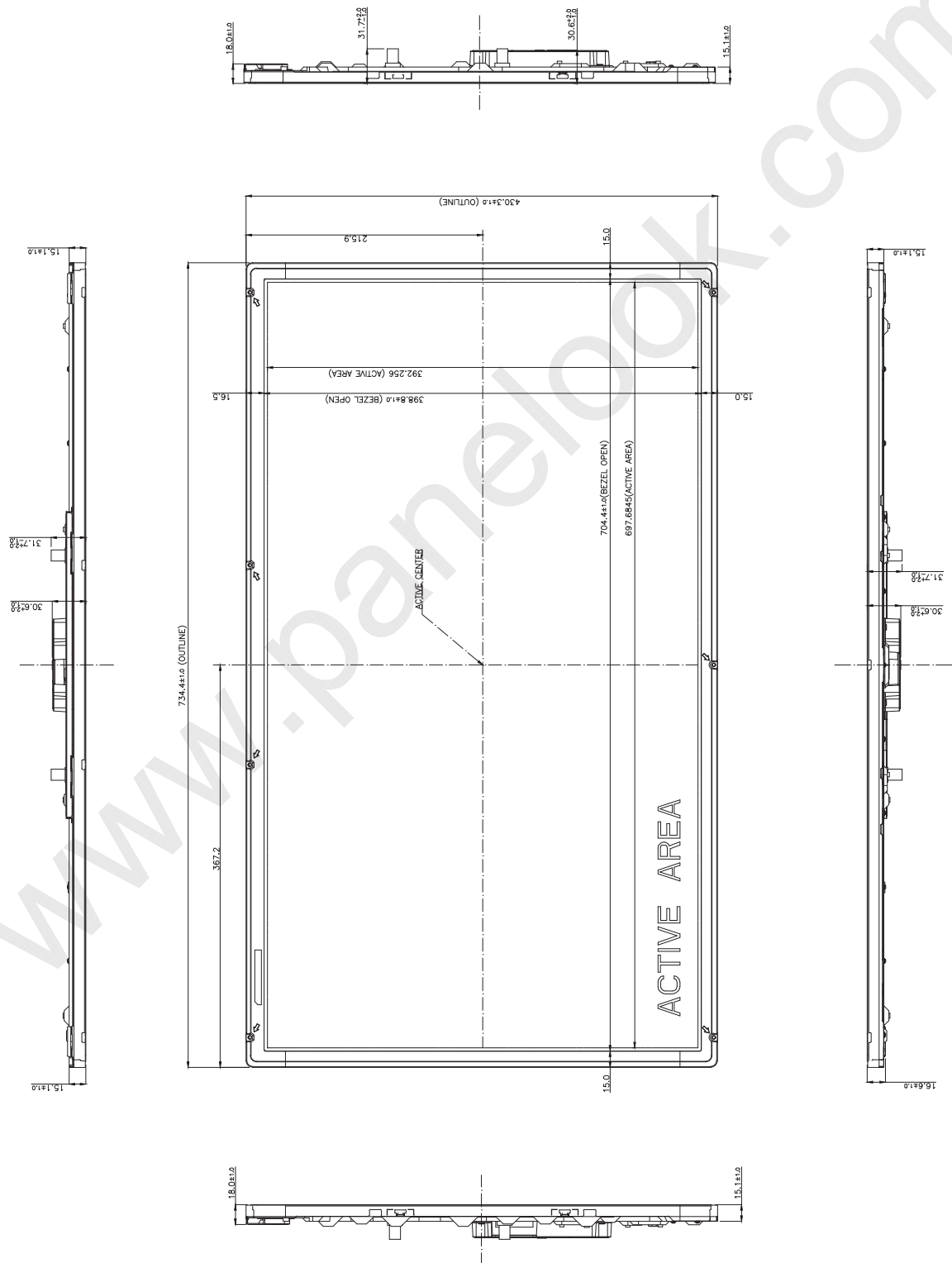
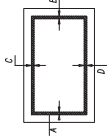
- The supply voltage of the external system for the Module input should be the same as the definition of V_{DD} .
- Apply the lamp voltage within the LCD operation range. When the back light turns on before the LCD operation or the LCD turns off before the back light turns off, the display may momentarily show abnormal screen.
- In case of V_{DD} = off level, please keep the level of input signals low or keep a high impedance.
- T_4 should be measured after the Module has been fully discharged between power off and on period.
- Interface signal should not be kept at high impedance when the power is on.
- In Case T_5 is less than 1000msec and T_6 is less than 100msec, Garbage Display can be seen. (It is not related to electrical function issue, Just for recommendation to prevent Garbage Display)

NO	PART NAME	CODE NO	SPECIFICATION	QTY	SPEC NO	REMARK
1	OUTLINE DIMENSION	-	DISCRAWNOT	1	-	-



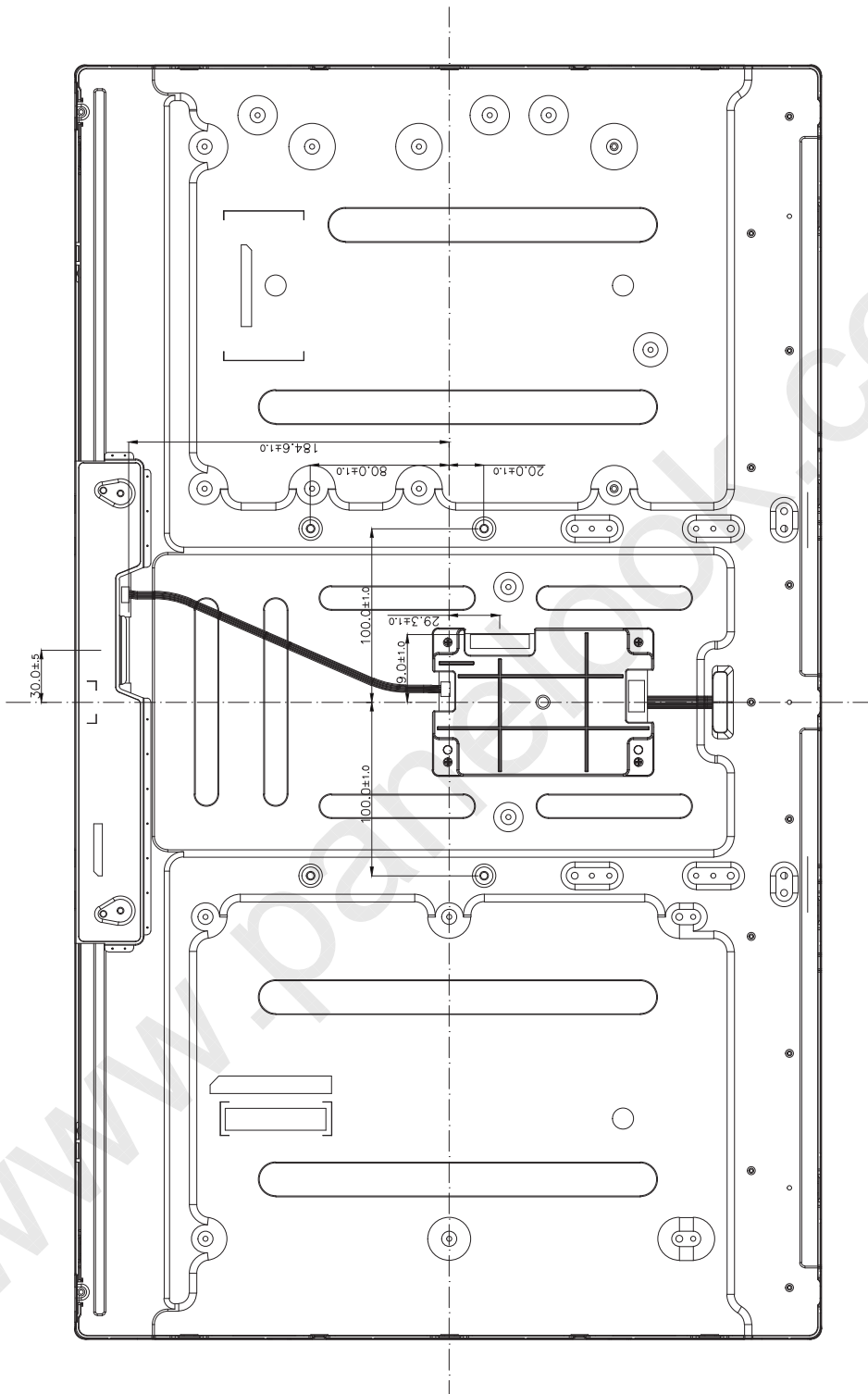
SECTION A-A'

- * NOTE
- BACKLIGHT : WLED
 - CONNECTOR SPECIFICATION : POWER CONNECTOR
 - POWER CONNECTOR : MAKER : COGNIZ
 - PART NO. : 20022WR-14B1
 - LVDS INPUT CONNECTOR
 - MAKER : UJU
 - PART NO. : IS100-L300-C23
 - USERHOLE DESIGNED FOR GENERAL PURPOSE METRIC
 - TAP SIZE & TOLERANCE
 - SCREW THREAD ACCORDING TO GENERAL GRADE OF "KS B 021"
 - ALLOWED SCREW TORQUE : 0.45 N·m MAX
 - M4 TAP : 13.0 kgf·cm MAX
 - (SCREW) REPEATED INSERTION WARRANTY : 5TIMES
 - GAP BETWEEN TOP CHASSIS AND GLASS IS 1.2mm(MAX).
 - WEIGHT : 5.500g(MAX)
 - BLACK MATRIX SPEC



REV	DATE	DESCRIPTION OF REVISION	APPROVED BY	REASON	CHK'D BY
1		DRN BY : / DESG BY : /			
2		SCALE : 1/1			
3		TOLERANCE : 11.0A1.3			
4		LEVEL : 3			
5		LEVEL : 3			
6		LEVEL : 3			
7		LEVEL : 3			
8		LEVEL : 3			
9		LEVEL : 3			
10		LEVEL : 3			
11		LEVEL : 3			
12		LEVEL : 3			
13		LEVEL : 3			
14		LEVEL : 3			
15		LEVEL : 3			
16		LEVEL : 3			
17		LEVEL : 3			
18		LEVEL : 3			
19		LEVEL : 3			
20		LEVEL : 3			
21		LEVEL : 3			
22		LEVEL : 3			
23		LEVEL : 3			
24		LEVEL : 3			
25		LEVEL : 3			
26		LEVEL : 3			
27		LEVEL : 3			
28		LEVEL : 3			
29		LEVEL : 3			
30		LEVEL : 3			
31		LEVEL : 3			
32		LEVEL : 3			
33		LEVEL : 3			
34		LEVEL : 3			
35		LEVEL : 3			
36		LEVEL : 3			
37		LEVEL : 3			
38		LEVEL : 3			
39		LEVEL : 3			
40		LEVEL : 3			
41		LEVEL : 3			
42		LEVEL : 3			
43		LEVEL : 3			
44		LEVEL : 3			
45		LEVEL : 3			
46		LEVEL : 3			
47		LEVEL : 3			
48		LEVEL : 3			
49		LEVEL : 3			
50		LEVEL : 3			
51		LEVEL : 3			
52		LEVEL : 3			
53		LEVEL : 3			
54		LEVEL : 3			
55		LEVEL : 3			
56		LEVEL : 3			
57		LEVEL : 3			
58		LEVEL : 3			
59		LEVEL : 3			
60		LEVEL : 3			
61		LEVEL : 3			
62		LEVEL : 3			
63		LEVEL : 3			
64		LEVEL : 3			
65		LEVEL : 3			
66		LEVEL : 3			
67		LEVEL : 3			
68		LEVEL : 3			
69		LEVEL : 3			
70		LEVEL : 3			
71		LEVEL : 3			
72		LEVEL : 3			
73		LEVEL : 3			
74		LEVEL : 3			
75		LEVEL : 3			
76		LEVEL : 3			
77		LEVEL : 3			
78		LEVEL : 3			
79		LEVEL : 3			
80		LEVEL : 3			
81		LEVEL : 3			
82		LEVEL : 3			
83		LEVEL : 3			
84		LEVEL : 3			
85		LEVEL : 3			
86		LEVEL : 3			
87		LEVEL : 3			
88		LEVEL : 3			
89		LEVEL : 3			
90		LEVEL : 3			
91		LEVEL : 3			
92		LEVEL : 3			
93		LEVEL : 3			
94		LEVEL : 3			
95		LEVEL : 3			
96		LEVEL : 3			
97		LEVEL : 3			
98		LEVEL : 3			
99		LEVEL : 3			
100		LEVEL : 3			

NO	PART NAME	CODE NO	SPECIFICATION	QTY	REMARK
	OUTLINE DIMENSION	-	LT1A320AN01	1	



REV		DESCRIPTION		REASON		CHK'D BY	
1		UNIT	mm	DES'D BY	Y01NM	MODEL NAME	LT1A320AN01
2		SCALE	1 / 2	CHK'D BY	T10208	PART/SHEET NAME	OUTLINE DIM.(REAR)
3		TOLERANCE				SPEC. NO	
GENERAL TOLERANCE		LEVEL 1	LEVEL 2	LEVEL 3	SAMSUNG ELECTRONICS		
STEP		±0.05	±0.1	±0.2			
0 < X ≤ 4		±0.08	±0.15	±0.3			
4 < X ≤ 16		±0.12	±0.25	±0.5			
16 < X ≤ 64		±0.25	±0.4	±0.8			
64 < X ≤ 256							
REVISION				CODE NO.		VER.	
				-		001	

Samsung Secret

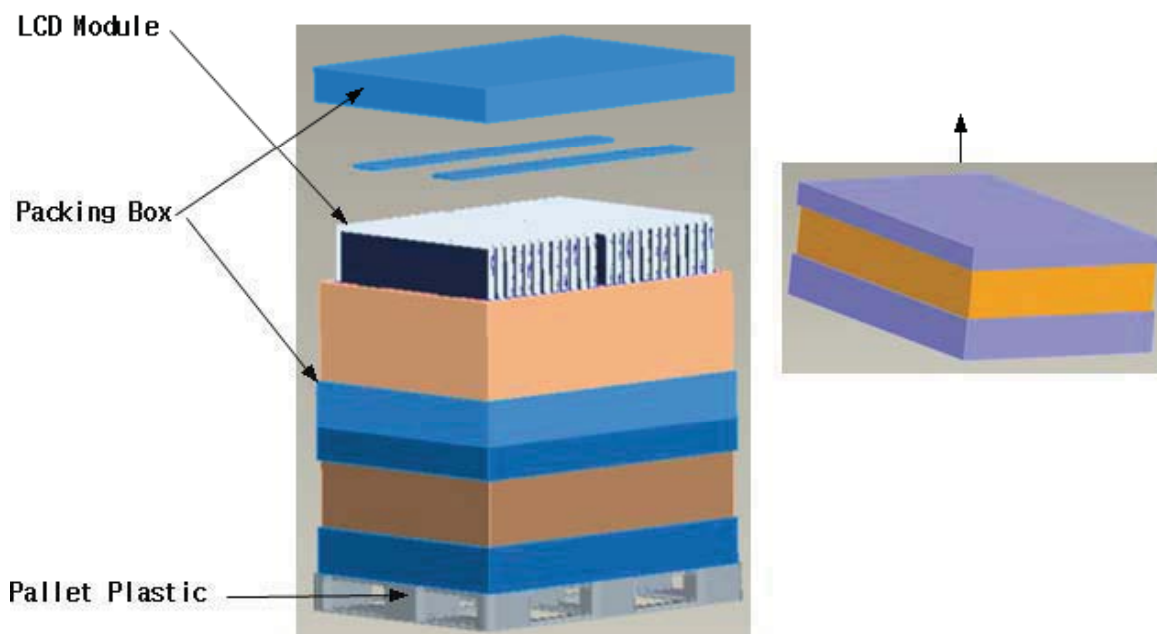
7. PACKING

7.1 CARTON (Internal Package)

(1) Packing Form

Corrugated fiberboard box and corrugated cardboard as shock absorber

(2) Packing Method



7.2 Packing Specification

Item	Specification	Remark
LCD Packing	24ea /Box 48ea /Pallet (Packing Pallet Box)	- 5.5kg/LCD(48ea) : 264kg(MAX.) - 15kg /Packing Set : 30kg(Typ.) (1104x810x480) - Packing Material :Paper
Pallet	2Box / Pallet	1. Pallet weight = 5.3 kg
Packing Direction	Vertical	
Total Pallet Size	H x V x height	1150mm(H) x 850mm(V) x 1083mm(height)
Total Pallet Weight	300.74	Module (5.5 x48) + Pallet(5.3kg) + Packing Set(15)x2 + Desiccant (0.03x48 = 1.44kg)

MODEL

LTA320AN01-D

Doc. No

06-002-G-20110523

Page

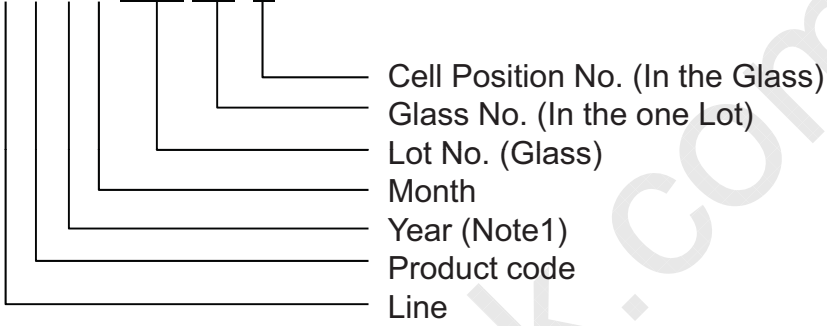
22 / 26

Samsung Secret

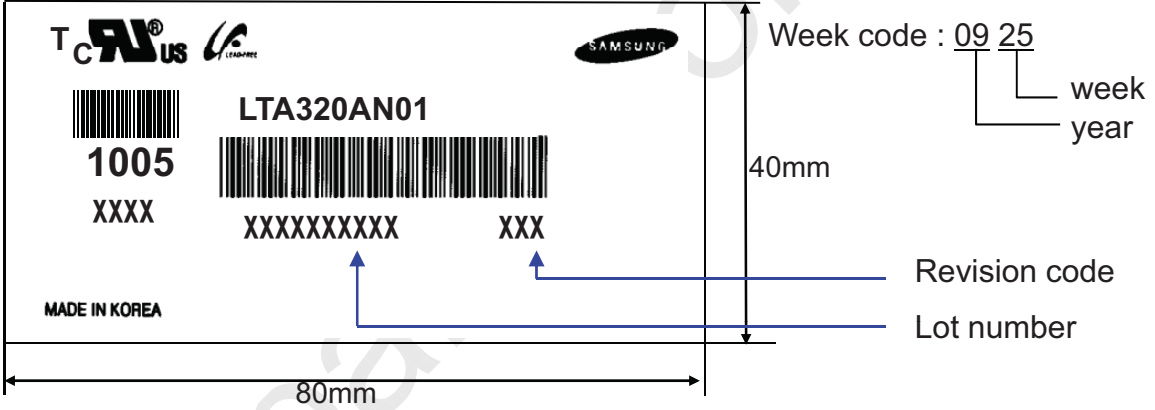
8. MARKING & OTHERS

A nameplate bearing followed by is affixed to a shipped product at the specified location on each product.

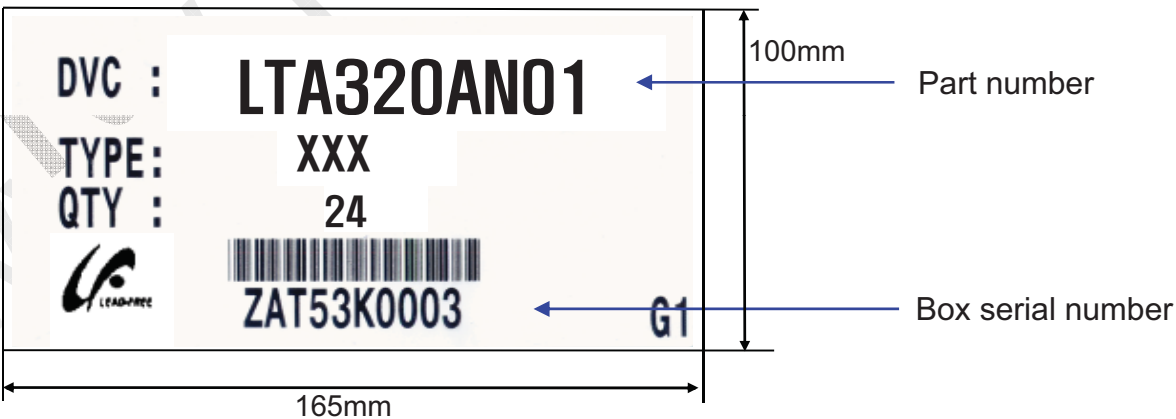
- (1) Part number : LTA320AN01
- (2) Revision: Three letters
- (3) Lot number : X X X X XXX XX X



(4) Nameplate Indication



(5) Packing box attach



(6) Others

- 1. After service part
 Lamps cannot be replaced because of the narrow bezel structure.

MODEL	LTA320AN01-D	Doc. No	06-002-G-20110523	Page	23 / 26
-------	--------------	---------	-------------------	------	---------

9. General Precautions

Samsung Secret

9.1 Handling

- (a) When the Module is assembled, it should be attached to the system firmly using all mounting holes. Be careful not to twist and bend the Module.
- (b) Because the inverter use high voltage, it should be disconnected from power before it is assembled or disassembled.
- (c) Refrain from strong mechanical shock and / or any force to the Module.
In addition to damage, this may cause improper operation or damage to the Module and LED back light.
- (d) Note that polarizers are very fragile and could be damage easily.
Do not press or scratch the surface harder than a HB pencil lead.
- (e) Wipe off water droplets or oil immediately. If you leave the droplets for a long time, staining or discoloration may occur.
- (f) If the surface of the polarizer is dirty, clean it using absorbent cotton or soft cloth.
- (g) Desirable cleaners are water, IPA(Isopropyl Alcohol) or Hexane.
Do not use Ketone type materials(ex. Acetone), Ethyl alcohol, Toluene, Ethyl acid or Methyl chloride. It might permanent damage to the polarizer due to chemical reaction.
- (h) If the liquid crystal material leaks from the panel, it should be kept away from the eyes or mouth . In case of contact with hands, legs or clothes, it must be washed away with soap thoroughly.
- (i) Protect the module from Electrostatic discharge. Otherwise the ASIC IC or semiconductor would be damaged.
- (j) Use finger-stalls with soft gloves in order to keep display clean during the incoming inspection and assembly process.
- (k) Do not disassemble the Module.
- (l) Do not disassemble shield case of inverter & LVDS board
- (m) Do not connect N.C pins. (Samsung internal use only)
- (n) Protection film for polarizer on the Module should be slowly peeled off just before use so that the electrostatic charge can be minimized. Must put on antistatic glove while handling a module
- (o) Pins of I/F connector should not be touched directly with bare hands.

MODEL

LTA320AN01-D

Doc. No

06-002-G-20110523

Page

24 / 26

Samsung Secret

9.2 Storage

- (a) Do not leave the module in high temperature, and high humidity for a long time. It is highly recommended to store the module with temperature from 5 to 40 °C and relative humidity of less than 70%.
- (b) Do not store the TFT-LCD module in direct sunlight.
- (c) The module shall be stored in a dark place. It is prohibited to apply sunlight or fluorescent light during the store.
- (d) Storage condition of Packing

ITEM	UNIT	Min.	Max.
Storage Temperature	(°C)	5	40
Storage Humidity	(%rH)	35	75
Storage Life	12 months		
Storage Condition	-Prohibit direct sunlight -Ventilation in storehouse and control changing temperature is within limits of environment -Put it on pallet and store them with removing from wall. -Don't wet Out-BOX and avoid rain. -Without condensation. -Etc. Avoid harmful Condition		
Long-term Storage Process	-More than 3 months Storage or Low temp. Delivery/under 5°C storage →On the 20°C, 50%rH Condition, more than 10hr release.		

9.3 Operation

- (a) Do not connect or disconnect the Module in the "Power On" condition.
- (b) Power supply should always be turned on/off by the "Power on/off sequence"
- (c) Module has high frequency circuits. Sufficient suppression to the electromagnetic interference should be done by system manufacturers. Grounding and shielding methods may be important to minimize the interference.
- (d) The cable between the back light connector and its inverter power supply should be connected directly with a minimized length. A longer cable between the back light and the inverter may cause lower luminance of lamp(CCFT) and may require higher startup voltage(Vs).

MODEL

LTA320AN01-D

Doc. No

06-002-G-20110523

Page

25 / 26

9.4 Operation Condition Guide

Samsung Secret

(a) The LCD product should be operated under normal conditions.

Normal condition is defined as below;

- Temperature : $20 \pm 15^{\circ}\text{C}$
- Humidity : $55 \pm 20\%$
- Display pattern : continually changing pattern (Not stationary)

(b) If the product will be used in extreme conditions such as high temperature, humidity, display patterns or operation time etc., It is strongly recommended to contact SEC for Application engineering advice. Otherwise, its reliability and function may not be guaranteed. Extreme conditions are commonly found at Airports, Transit Stations, Banks, Stock market, and Controlling systems.

9.5 Others

- (a) Ultra-violet ray filter is necessary for outdoor operation.
- (b) Avoid condensation of water. It may result in improper operation or disconnection of electrode.
- (c) Do not exceed the absolute maximum rating value. (supply voltage variation, input voltage variation, variation in part contents and environmental temperature, and so on)
Otherwise the Module may be damaged.
- (d) If the Module keeps displaying the same pattern for a long period of time, the image may be "sticked" to the screen.
To avoid image sticking, it is recommended to use a screen saver.
- (e) This Module has its circuitry PCB's on the rear side and should be handled carefully in order not to be stressed.
- (f) Please contact SEC in advance when you display the same pattern for a long time.

MODEL

LTA320AN01-D

Doc. No

06-002-G-20110523

Page

26 / 26