

**Samsung Secret**

Product Information

DATE : 17. Jan. 2012**SAMSUNG TFT-LCD****MODEL : LTA320AN12**

The Information Described in this Specification is Preliminary and can be changed without prior notice

LCD Business

Samsung Electronics Co . , LTD.

MODEL

LTA320AN12

Doc. No

06-000-G-20120117

Page

1 / 26

Contents**Samsung Secret**

Revision History	-----	(3)
General Description	-----	(4)
General Information	-----	(4)
1. Absolute Maximum Ratings	-----	(5)
2. Optical Characteristics	-----	(6)
3. Electrical Characteristics	-----	(9)
3.1 TFT LCD Module		
3.2 Back Light Unit		
3.3 Converter Input & Specification		
4. Input Terminal Pin Assignment	-----	(12)
4.1 Input Signal & Power		
4.2 Converter Input Pin Configuration		
4.3 Converter Input Power Sequence		
4.4 LVDS Interface		
4.5 Input Signals, Basic Display Colors and Gray Scale of Each Color		
5. Interface Timing	-----	(17)
5.1 Timing Parameters (DE mode)		
5.2 LVDS Input data Characteristics		
5.3 Timing Diagrams of interface Signal (DE mode)		
5.4 Power ON/OFF Sequence		
6. Outline Dimension	-----	(20)
7. Packing	-----	(22)
8. Marking & Others	-----	(23)
9. General Precaution	-----	(24)
9.1 Handling		
9.2 Storage		
9.3 Operation		
9.4 Operation Condition Guide		
9.5 Others		

MODEL

LTA320AN12

Doc. No

06-000-G-20120117

Page

2 / 26

Revision History**Samsung Secret**

Date	Rev. No	Page	Summary
17. Jan. 2012	000	All	First issued

MODEL

LTA320AN12

Doc. No

06-000-G-20120117

Page

3 / 26

General Description

Samsung Secret

Description

LTA320AN12 is a color active matrix liquid crystal display (LCD) that uses amorphous silicon TFT (Thin Film Transistor) as switching components. This model is composed of a TFT LCD panel, a driver circuit and a back light unit. The resolution of a 32.0" is 1366 x 768 and this model can display up to 16.7 million colors with wide viewing angle of 89° or higher in all directions. This panel is intended to support applications to provide an excellent performance for Flat Panel Display such as Home-alone Multimedia TFT-LCD TV and High Definition TV

Features

- RoHS compliance (Pb-free)
- High contrast ratio & aperture ratio with wide color gamut
- PVA (Patterned Vertical Align) mode
- Wide viewing angle ($\pm 178^\circ$)
- High speed response
- HD resolution (16:9)
- Low Power consumption
- Edge Type LED (Light Emitted Diode) BLU
- DE (Data Enable) mode
- 1Ch LVDS (Low Voltage Differential Signaling) interface (1pixel/clock)

General Information

Items	Specification	Unit	Note
Module Size	734.4 (H) X 430.3 (V)	mm	$\pm 1.0\text{mm}$
	33.7 (D max)		With wall mount stud
Weight	5300 (Max)	g	
Pixel Pitch	0.51075 (H) \times 0.17025 (V)	mm	
Active Display Area	697.6845 (H) X 392.256 (V)	mm	
Surface Treatment	Hard-coating		Anti-glare
Display Colors	8 bit – 16.7 M	colors	
Number of Pixels	1366 x 768	pixel	
Pixel Arrangement	RGB vertical stripe		
Display Mode	Normally Black		
Luminance of White	320 (Typ.)	cd/m ²	

MODEL

LTA320AN12

Doc. No

06-000-G-20120117

Page

4 / 26

Samsung Secret

1. Absolute Maximum Ratings

If the condition exceeds maximum ratings, it can cause malfunction or unrecoverable damage to the device.

Item	Symbol	Min.	Max.	Unit	Note
Power Supply Voltage	V_{DD}	GND-0.3	16	V	(1)
Storage temperature	T_{STG}	-20	60	°C	(2)
Operating temperature	T_{OPR}	0	50	°C	
Shock (non - operating)	X,Y,Z	-	50	G	(3)
Vibration (non - operating)	V_{NOP}	-	1.5	G	(4)

Note (1) $T_a = 25 \pm 2$ °C

(2) Temperature and relative humidity range are shown in the figure below.

a. 90 % RH Max. ($T_a \leq 39$ °C)

b. Relative Humidity is 90% or less. ($T_a > 39$ °C)

c. No condensation

(3) 11ms, sine wave, one time for $\pm X$, $\pm Y$, $\pm Z$ axis

(4) 10-300 Hz, Sweep rate 10min, 30min for X,Y,Z axis

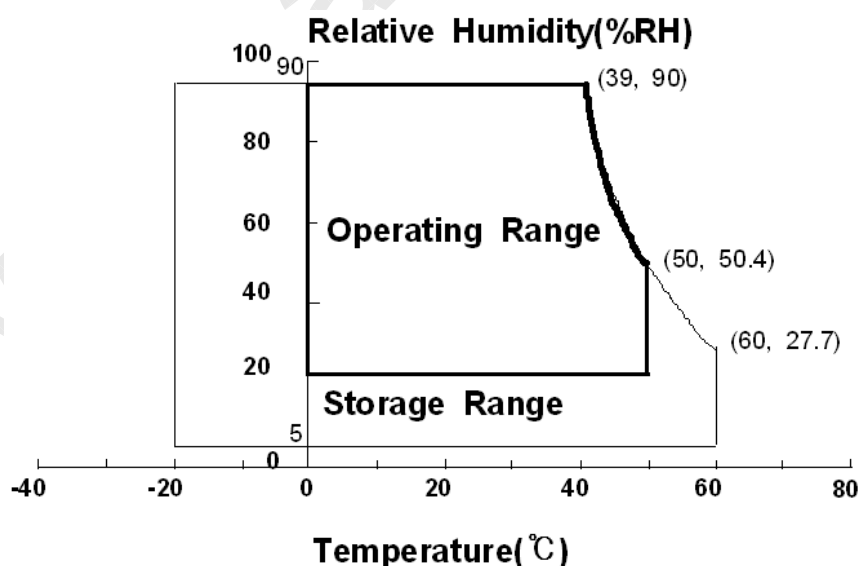


Fig. Temperature and Relative humidity range

MODEL

LTA320AN12

Doc. No

06-000-G-20120117

Page

5 / 26

2. Optical Characteristics

Samsung Secret

The optical characteristics should be measured in a dark room or equivalent.

Measuring equipment : TOPCON RD-80S, TOPCON SR-3, ELDIM EZ-Contrast

(Ta = 25 ± 2°C, VDD=12V, fv= 60Hz, f_{DCLK} = 78MHz, Duty = 100%)

Item	Symbol	Condition	Min.	Typ.	Max.	Unit	Note	
Contrast Ratio (Center of screen)	C/R		-	4000	-		(1) SR-3	
Response Time G-to-G	Tg	Normal q _{L,R} = 0 q _{U,D} = 0 Viewing Angle	-	TBD	-	msec	(3) RD-80S	
Luminance of White (Center of screen)	Y _L		-	320	-	cd/m ²	(4) SR-3	
Color Chromaticity (CIE 1931)	Red		Rx	TYP. -0.03	TBD	TYP. +0.03		(5),(6) SR-3
			Ry		TBD			
	Green		Gx		TBD			
			Gy		TBD			
	Blue		Bx		TBD			
			By		TBD			
	White		Wx		0.280			
			Wy		0.290			
Color Gamut	-	-	72	-	%	(5) SR-3		
Color Temperature	-	-	10000	-	K			
Viewing Angle	Hor.	q _L	79	89	-	Degree	(6) EZ-Contrast	
		q _R	79	89	-			
	Ver.	q _U	79	89	-			
		q _D	79	89	-			
White Brightness Uniformity (9 Points)	B _{uni}		-	-	30	%	(2) SR-3	

- Test Equipment Setup

The measurement should be executed in a stable, windless and dark room between 40min and 60min after lighting the back light at the given temperature for stabilization of the back light. This should be measured in the center of screen.

Environment condition : Ta = 25 ± 2 °C

MODEL

LTA320AN12

Doc. No

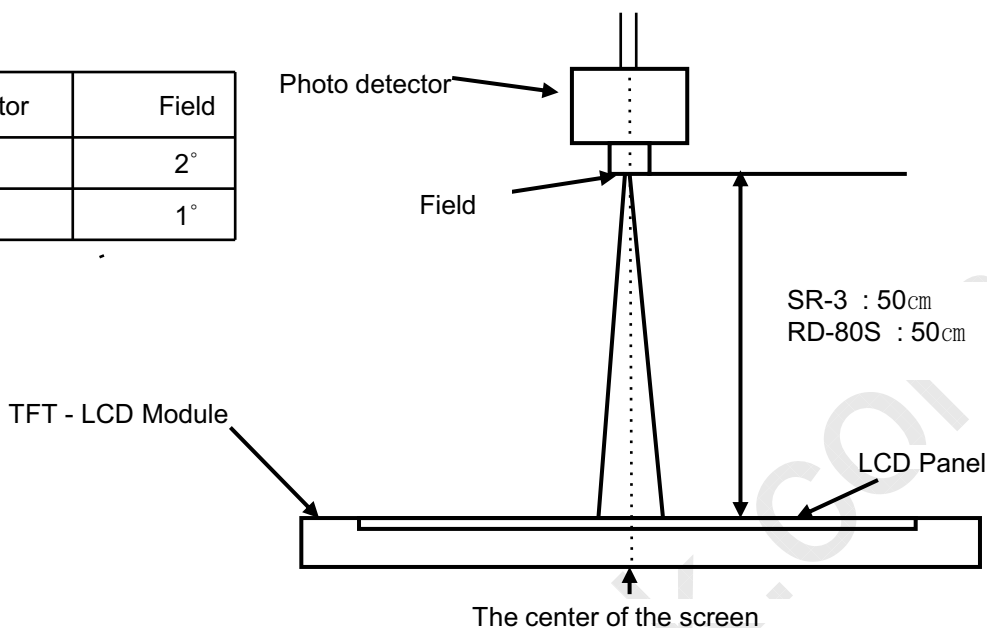
06-000-G-20120117

Page

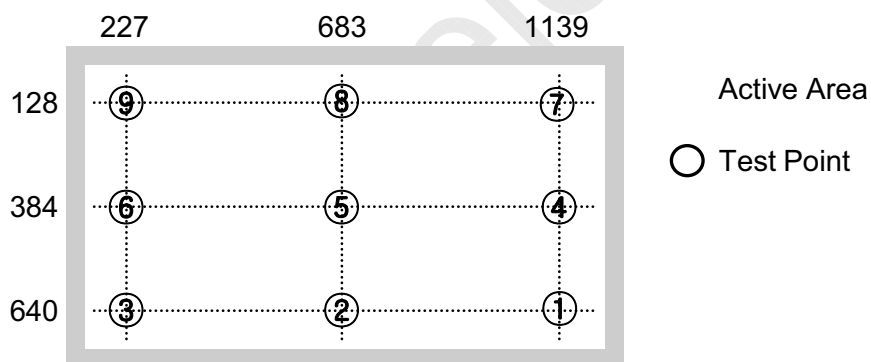
6 / 26

Samsung Secret

Photo detector	Field
SR-3	2°
RD-80S	1°



- Definition of test point



Note (1) Definition of Contrast Ratio (C/R)

: Ratio of gray max (Gmax) & gray min (Gmin) at the center point ⑤ of the panel

$$C/R = \frac{G_{max}}{G_{min}}$$

Gmax : Luminance with all pixels white

Gmin : Luminance with all pixels black

Samsung Secret

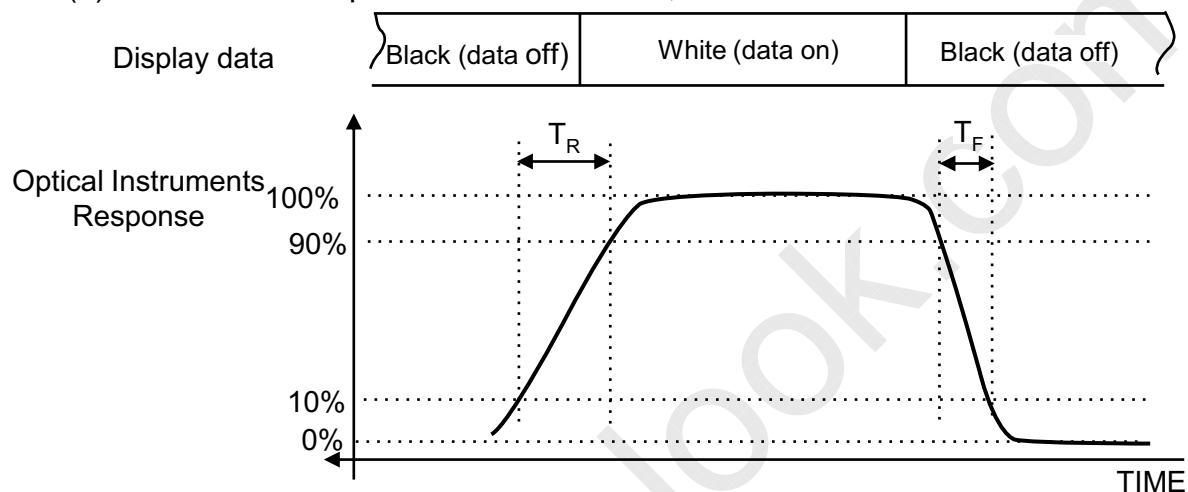
Note (2) Definition of 9 points brightness uniformity (Test pattern : Full White)

$$B_{uni} = 100 * \frac{(B_{max} - B_{min})}{B_{max}}$$

Bmax : Maximum brightness

Bmin : Minimum brightness

Note (3) Definition of Response time : Sum of Tr, Tf



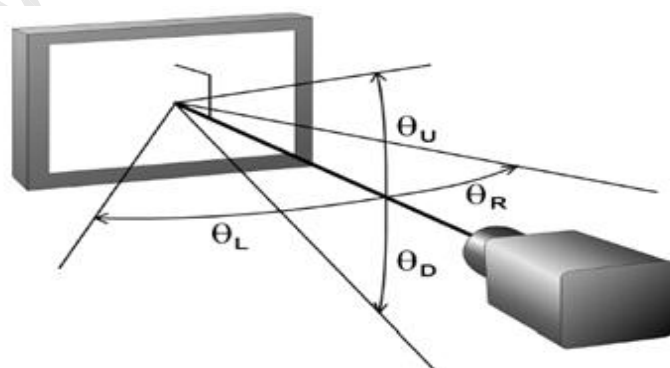
Note (4) Definition of Luminance of White : Luminance of white at center point ⑤

Note (5) Definition of Color Chromaticity (CIE 1931)

Color coordinate of Red, Green, Blue & White at center point ⑤

Note (6) Definition of Viewing Angle

: Viewing angle range (C/R ≥ 10)



MODEL

LTA320AN12

Doc. No

06-000-G-20120117

Page

8 / 26

3. Electrical Characteristics

Samsung Secret

3.1 TFT LCD Module

The connector for display data & timing signal should be connected.

$T_a = 25^\circ\text{C} \pm 2^\circ\text{C}$

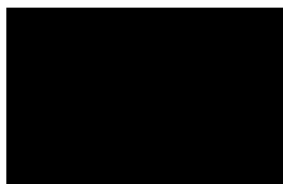
Item	Symbol	Min.	Typ.	Max.	Unit	Note
Voltage of Power Supply	V_{DD}	10.8	12.0	13.2	V	(1)
Current of Power Supply	(a) Black	-	400	500	mA	(2),(3)
	(b) White	-	500	600	mA	
	(c) V-STRIPE	-	600	700	mA	
Vsync Frequency	f_V	50	60	66	Hz	
Hsync Frequency	f_H	44	48	53	kHz	
Main Frequency	f_{DCLK}	72	78	85	MHz	
Rush Current	I_{RUSH}	-	-	4	A	(4)

Note (1) The ripple voltage should be controlled under 10% of V_{DD} .

(2) $f_V=60\text{Hz}$, $f_{DCLK} = 78\text{MHz}$, $V_{DD} = 12.0\text{V}$, DC Current.

(3) Power dissipation check pattern (LCD Module only)

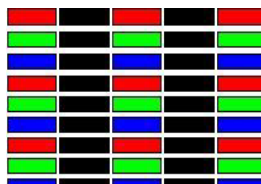
a) Black Pattern



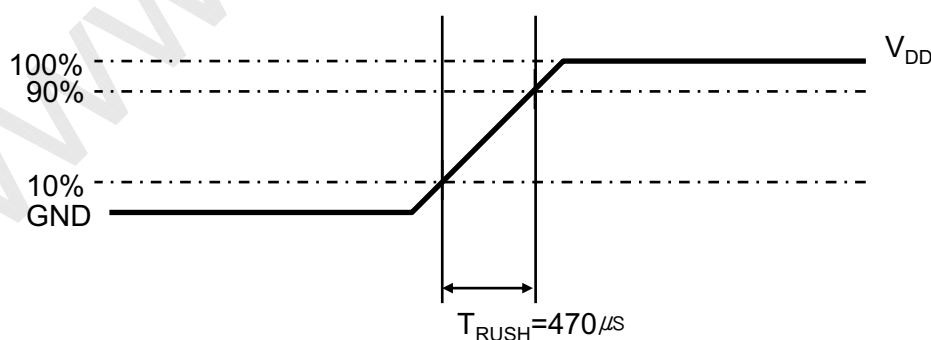
b) White Pattern



c) V-STRIPE



(4) Measurement Conditions



Rush Current I_{RUSH} can be measured when T_{RUSH} is $470 \mu\text{s}$.

MODEL

LTA320AN12

Doc. No

06-000-G-20120117

Page

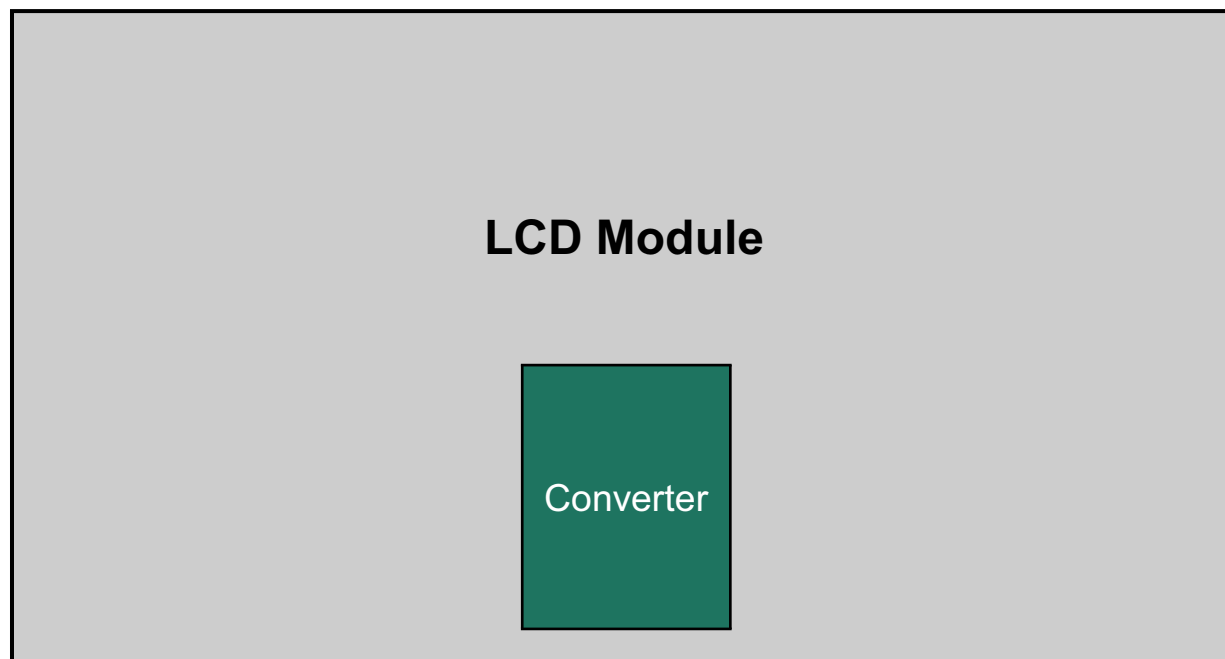
9 / 26

Samsung Secret

3.2 Back Light Unit

The back light unit contains Edge type White LEDs (Light Emitting Diode)

$T_a = 25 \pm 2^\circ\text{C}$



Item	Symbol	Min.	Typ.	Max.	Unit	Note
Operating Life Time	Hr	30000	-	-	Hour	(1)

Note (1) It is defined as the time to take until the brightness reduces to 50% of its original value.

[Operating condition : $T_a = 25 \pm 2^\circ\text{C}$, For LED package only.]

(2) Test condition : 130mA, $T_j : 85^\circ\text{C}$, 2000 Hr

3.3 Converter Input Condition & Specification

Samsung Secret

Items	Symbol	Conditions	Specifications			Unit	Note
			Min.	Typ.	Max.		
Input Voltage	V _{in}	-	22	24	26	V	T _a =25±2 °C
Input Current	I _{RUSH}	V _{in} =24.0V V _{dim} =3.3V	-	-	2.5	A	
Output Current	I _{O,MAX}	V _{in} = 24.0V V _{dim} =3.3 V	124	130	136	mArms	
Backlight On/Off	ON	V _{in} =24.0 V	3	-	5.25	V	(2)
	OFF	V _{in} =24.0 V	0	-	0.4		
Dimming Range	V _{DIM}	V _{in} :22~26V	0	-	3.3	V	
Dimming Duty Output	D max	V _{in} =24V Dim:3.3V	100	-	-	%	(2)
	D min	V _{in} =24V Dim:0V	-	1	-		
Dimming Frequency	F _{PWM}	V _{in} =24.0 V	140	150	160	Hz	(2)
External Dimming Duty Range	EX_Dim	Min	1	-	100	%	
External Dimming Frequency Range	F _{EX_PWM}	V _{in} =22.0~26.0 V	138	-	164	Hz	Dim Pin(#13) : Floating
External Dimming Signal Level	V _{PWM}	High (ON)	3.0	-	5.25	V	
		Low (Off)	0	-	0.4		

Note) Power Consumption is measured when 320 [cd/m] of luminance which is the typical luminance.

(1) All data is measured after 120min warm-up.

(2) only use #Pin 13

- Additional Appendix for Supply Current & Power consumption

Items	Symbol	Conditions	Min.	Typ.	Max.	Unit
Input Current	lin _ overshoot	V _{in} = 24V, Dim=3.3V (Within 1hr at BLU on)	-	1.75	1.85	A
	lin _ saturation	V _{in} = 24V, Dim=3.3V (After 1hr Aging)	-	1.7	1.8	A

4. Input Terminal Pin Assignment

Samsung Secret

4.1. Input Signal & Power

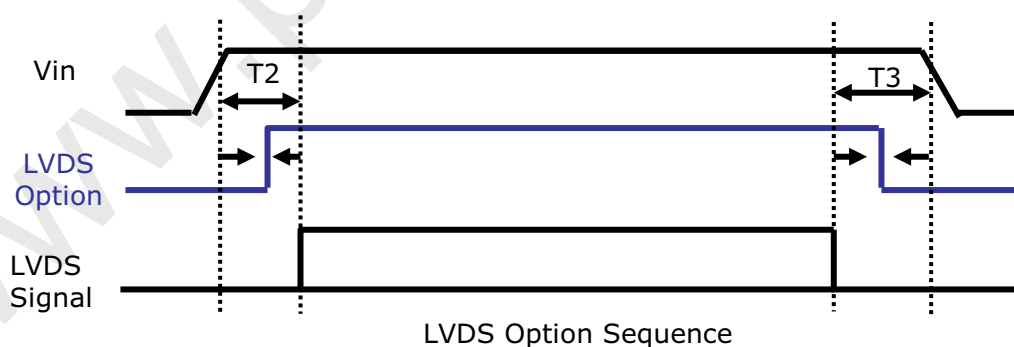
Connector :IS100-L300-C23

PIN No.	Description	PIN No.	Description
1	VIN (12V)	16	LV1_P
2	VIN (12V)	17	GND
3	VIN (12V)	18	LV2_N
4	VIN (12V)	19	LV2_P
5	N.C	20	GND
6	GND	21	LVCLK_N
7	GND	22	LVCLK_P
8	N.C	23	GND
9	LVDS_SEL (note 2)	24	LV3_N
10	N.C	25	LV3_P
11	GND	26	GND
12	LV0_N	27	N.C
13	LV0_P	28	N.C
14	GND	29	N.C
15	LV1_N	30	GND

Note1) No Connection: This PINS are only used ONLY for SAMSUNG.

Note2) LVDS OPTION : If this PIN is HIGH (3.3 V) → Normal LVDS format
 LOW (GND) → JEIDA LVDS format

SEQUENCE : On = $V_{DD}(T1) \geq \text{LVDS Option} \geq \text{Interface Signal}(T2)$
 OFF = $\text{Interface Signal}(T3) \geq \text{LVDS Option} \geq V_{DD}$



MODEL

LTA320AN12

Doc. No

06-000-G-20120117

Page

12 / 26

Samsung Secret

Note(1) Pin number starts from Left side

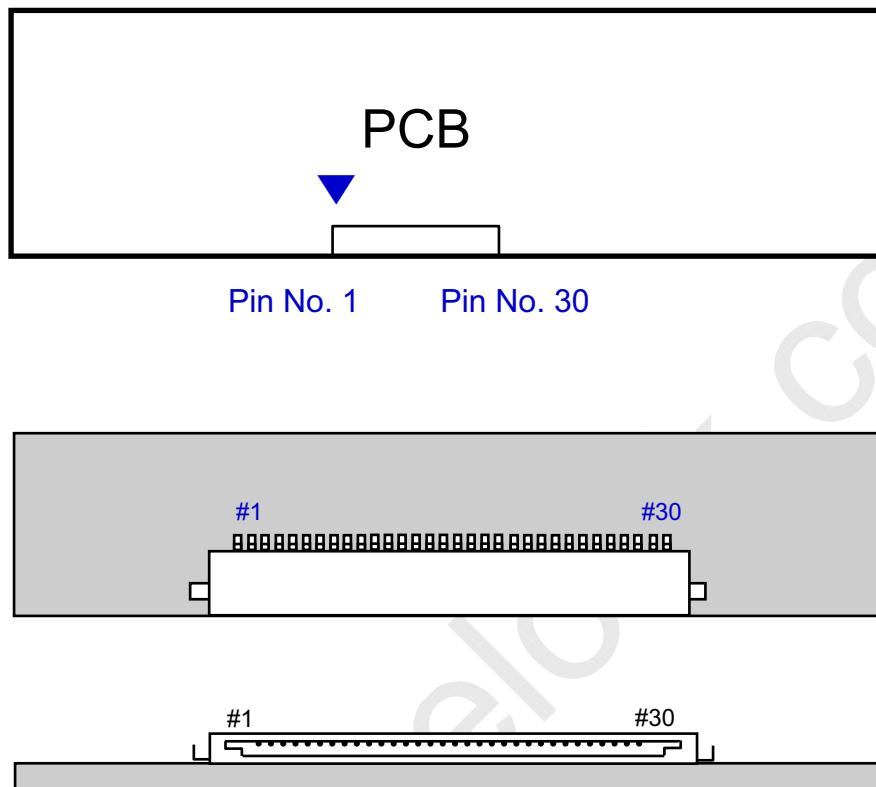


Fig. Connector diagram

- Power GND pins should be connected to the LCD's metal chassis.
- All power input pins should be connected together.
- All NC pin should be separated from other signal or power.

MODEL

LTA320AN12

Doc. No

06-000-G-20120117

Page

13 / 26

4.2. converter Input Pin Configuration

Samsung Secret

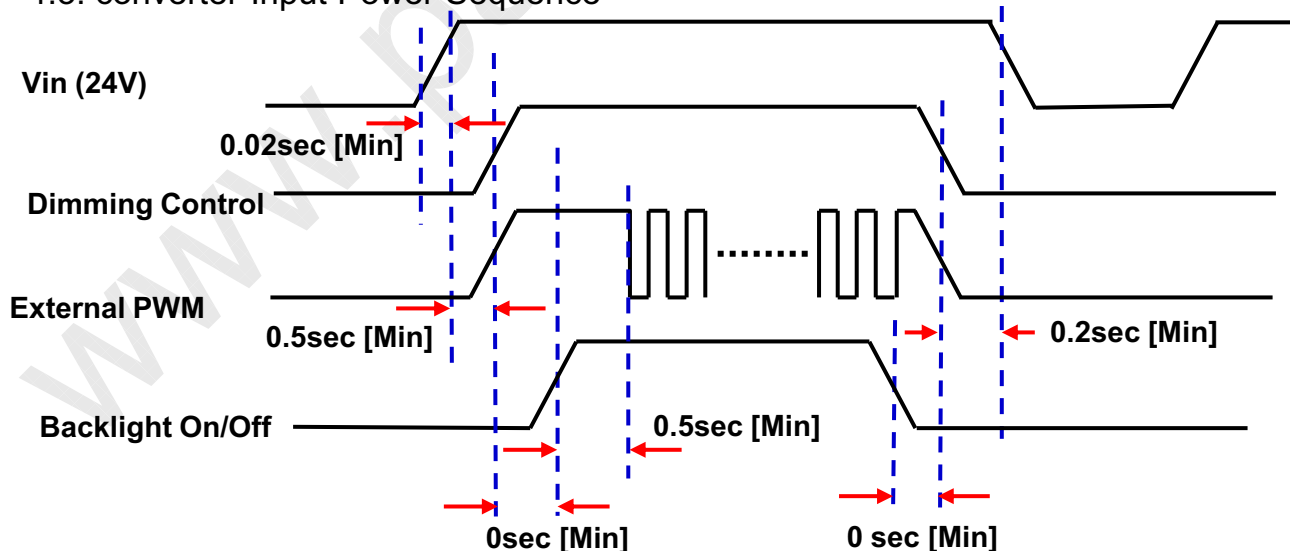
Connector : Yeon-ho, 20022WR-14B1

Pin No.	Pin Configuration(FUNCTION)
	Master
1	24 V
2	24 V
3	24 V
4	24 V
5	24 V
6	GND
7	GND
8	GND
9	GND
10	GND
11	No connection
12	ENA [converter on/off control signal]
13	Dimming Control [0V:Min, 3.3V:Max] *Note(1)
14	External PWM [1~100%] *Note(1)

Note(1) If use Dimming Control, Pin 14 Must be N.C

If use External PWM, Pin 13 Must be N.C

4.3. converter Input Power Sequence



Note) SEQUENCE : ON = Vin(24V) > Dimming Control ≥ Backlight On/Off

OFF = Backlight On/Off ≥ Dimming Control > Vin(24V)

MODEL

LTA320AN12

Doc. No

06-000-G-20120117

Page

14 / 26

4.4 LVDS Interface

Samsung Secret

- LVDS Receiver : Tcon (merged)

- Data Format (JEIDA & VESA)

	LVDS pin	JEIDA -DATA	VESA -DATA
TxOUT/RxIN0	TxIN/RxOUT0	R2	R0
	TxIN/RxOUT1	R3	R1
	TxIN/RxOUT2	R4	R2
	TxIN/RxOUT3	R5	R3
	TxIN/RxOUT4	R6	R4
	TxIN/RxOUT6	R7	R5
	TxIN/RxOUT7	G2	G0
TxOUT/RxIN1	TxIN/RxOUT8	G3	G1
	TxIN/RxOUT9	G4	G2
	TxIN/RxOUT12	G5	G3
	TxIN/RxOUT13	G6	G4
	TxIN/RxOUT14	G7	G5
	TxIN/RxOUT15	B2	B0
	TxIN/RxOUT18	B3	B1
TxOUT/RxIN2	TxIN/RxOUT19	B4	B2
	TxIN/RxOUT20	B5	B3
	TxIN/RxOUT21	B6	B4
	TxIN/RxOUT22	B7	B5
	TxIN/RxOUT24	HSYNC	HSYNC
	TxIN/RxOUT25	VSYNC	VSYNC
	TxIN/RxOUT26	DEN	DEN
TxOUT/RxIN3	TxIN/RxOUT27	R0	R6
	TxIN/RxOUT5	R1	R7
	TxIN/RxOUT10	G0	G6
	TxIN/RxOUT11	G1	G7
	TxIN/RxOUT16	B0	B6
	TxIN/RxOUT17	B1	B7
	TxIN/RxOUT23	RESERVED	RESERVED

MODEL

LTA320AN12

Doc. No

06-000-G-20120117

Page

15 / 26

Samsung Secret

4.5 Input Signals, Basic Display Colors and Gray Scale of Each Color

COLOR	DISPLAY (8bit)	DATA SIGNAL																								GRAY SCALE LEVEL
		RED							GREEN							BLUE										
		R0	R1	R2	R3	R4	R5	R6	R7	G0	G1	G2	G3	G4	G5	G6	G7	B0	B1	B2	B3	B4	B5	B6	B7	
BASIC COLOR	BLACK	0	0	0	0	0	0	0	0	0	0	0	0	0	0	0	0	0	0	0	0	0	0	0	0	-
	BLUE	0	0	0	0	0	0	0	0	0	0	0	0	0	0	0	0	1	1	1	1	1	1	1	1	-
	GREEN	0	0	0	0	0	0	0	0	1	1	1	1	1	1	1	1	0	0	0	0	0	0	0	0	-
	CYAN	0	0	0	0	0	0	0	0	1	1	1	1	1	1	1	1	1	1	1	1	1	1	1	1	-
	RED	1	1	1	1	1	1	1	1	0	0	0	0	0	0	0	0	0	0	0	0	0	0	0	0	-
	MAGENTA	1	1	1	1	1	1	1	1	0	0	0	0	0	0	0	0	1	1	1	1	1	1	1	1	-
	YELLOW	1	1	1	1	1	1	1	1	1	1	1	1	1	1	1	1	0	0	0	0	0	0	0	0	-
	WHITE	1	1	1	1	1	1	1	1	1	1	1	1	1	1	1	1	1	1	1	1	1	1	1	1	-
GRAY SCALE OF RED	BLACK	0	0	0	0	0	0	0	0	0	0	0	0	0	0	0	0	0	0	0	0	0	0	0	R0	
	DARK ↑	1	0	0	0	0	0	0	0	0	0	0	0	0	0	0	0	0	0	0	0	0	0	0	R1	
		0	1	0	0	0	0	0	0	0	0	0	0	0	0	0	0	0	0	0	0	0	0	0	R2	
		:	:	:	:	:	:	:	:	:	:	:	:	:	:	:	:	:	:	:	:	:	:	:	R3~R252	
		:	:	:	:	:	:	:	:	:	:	:	:	:	:	:	:	:	:	:	:	:	:	:		
	↓ LIGHT	1	0	1	1	1	1	1	1	0	0	0	0	0	0	0	0	0	0	0	0	0	0	0	R253	
		0	1	1	1	1	1	1	1	0	0	0	0	0	0	0	0	0	0	0	0	0	0	0	R254	
	RED	1	1	1	1	1	1	1	1	0	0	0	0	0	0	0	0	0	0	0	0	0	0	0	R255	
GRAY SCALE OF GREEN	BLACK	0	0	0	0	0	0	0	0	0	0	0	0	0	0	0	0	0	0	0	0	0	0	0	G0	
	DARK ↑	0	0	0	0	0	0	0	0	1	0	0	0	0	0	0	0	0	0	0	0	0	0	0	G1	
		0	0	0	0	0	0	0	0	0	1	0	0	0	0	0	0	0	0	0	0	0	0	0	G2	
		:	:	:	:	:	:	:	:	:	:	:	:	:	:	:	:	:	:	:	:	:	:	:	G3~G252	
		:	:	:	:	:	:	:	:	:	:	:	:	:	:	:	:	:	:	:	:	:	:	:		
	↓ LIGHT	0	0	0	0	0	0	0	0	1	0	1	1	1	1	1	1	0	0	0	0	0	0	0	G253	
		0	0	0	0	0	0	0	0	0	1	1	1	1	1	1	1	0	0	0	0	0	0	0	G254	
	GREEN	0	0	0	0	0	0	0	0	1	1	1	1	1	1	1	1	0	0	0	0	0	0	0	G255	
GRAY SCALE OF BLUE	BLACK	0	0	0	0	0	0	0	0	0	0	0	0	0	0	0	0	0	0	0	0	0	0	0	B0	
	DARK ↑	0	0	0	0	0	0	0	0	0	0	0	0	0	0	0	0	1	0	0	0	0	0	0	B1	
		0	0	0	0	0	0	0	0	0	0	0	0	0	0	0	0	0	1	0	0	0	0	0	B2	
		:	:	:	:	:	:	:	:	:	:	:	:	:	:	:	:	:	:	:	:	:	:	:	B3~B252	
		:	:	:	:	:	:	:	:	:	:	:	:	:	:	:	:	:	:	:	:	:	:	:		
	↓ LIGHT	0	0	0	0	0	0	0	0	0	0	0	0	0	0	0	0	1	0	1	1	1	1	1	B253	
		0	0	0	0	0	0	0	0	0	0	0	0	0	0	0	0	0	1	1	1	1	1	1	B254	
	BLUE	0	0	0	0	0	0	0	0	0	0	0	0	0	0	0	0	1	1	1	1	1	1	1	B255	

Note) Definition of Gray :

Rn : Red Gray, Gn : Green Gray, Bn : Blue Gray (n = Gray level)

Input Signal : 0 = Low level voltage, 1 = High level voltage

MODEL	LTA320AN12	Doc. No	06-000-G-20120117	Page	16 / 26
-------	------------	---------	-------------------	------	---------

5. Interface Timing

Samsung Secret

5.1 Timing Parameters (DE mode)

SIGNAL	ITEM	SYMBOL	MIN.	TYP.	MAX.	Unit	NOTE
Clock	Frequency	$1/T_C$	72	78	85	MHz	-
Hsync		F_H	44	48	53	KHz	-
Vsync		F_V	50	60	66	Hz	-
Vertical Display Term	Active Display Period	T_{VD}	-	768	-	Lines	-
	Vertical Total	T_V	780	802	1200	Lines	-
Horizontal Display Term	Active Display Period	T_{HD}	-	1366	-	Clocks	-
	Horizontal Total	T_H	1460	1624	2000	clocks	-

Note) This product is DE mode. But the Hsync & Vsync signal must be inputted
 (1) Test Point : TTL control signal and CLK at LVDS Tx input terminal in system
 (2) Internal VDD = 3.3V
 (3) Spread spectrum
 - Modulation rate (max) : $\pm 1.5\%$, Modulation Frequency : under 100KHz

5.2 LVDS Input Data Characteristics

ITEM		SYMBOL	Min.	Typ.	Max.	UNIT	NOTE
Input Data Position	$F_{IN}=85\text{MHz}$	t_{RSRM}	-	-	400	ps	
		t_{RSLM}	-400	-	-	ps	
Input common mode voltage		V_{CM}	$V_{SSL}+0.6$	1.2	$V_{DDL}-0.6$	V	-
Differential Input Voltage		$ V_{ID} $	100	-	-	mV	-

Note) When the skew is measured the Spread Spectrum should be 0%

MODEL

LTA320AN12

Doc. No

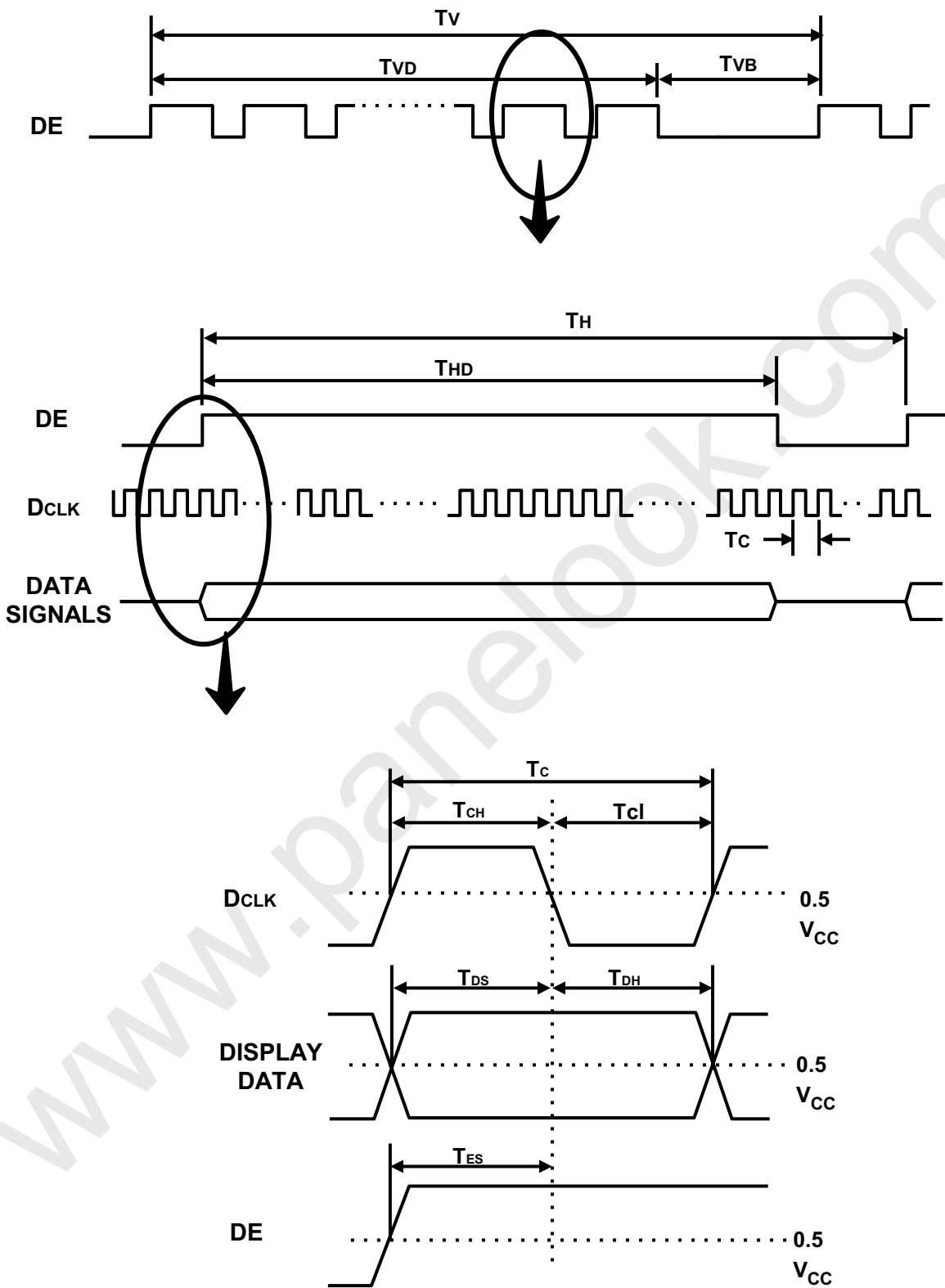
06-000-G-20120117

Page

17 / 26

5.2 Timing diagrams of interface signal (DE mode)

Samsung Secret

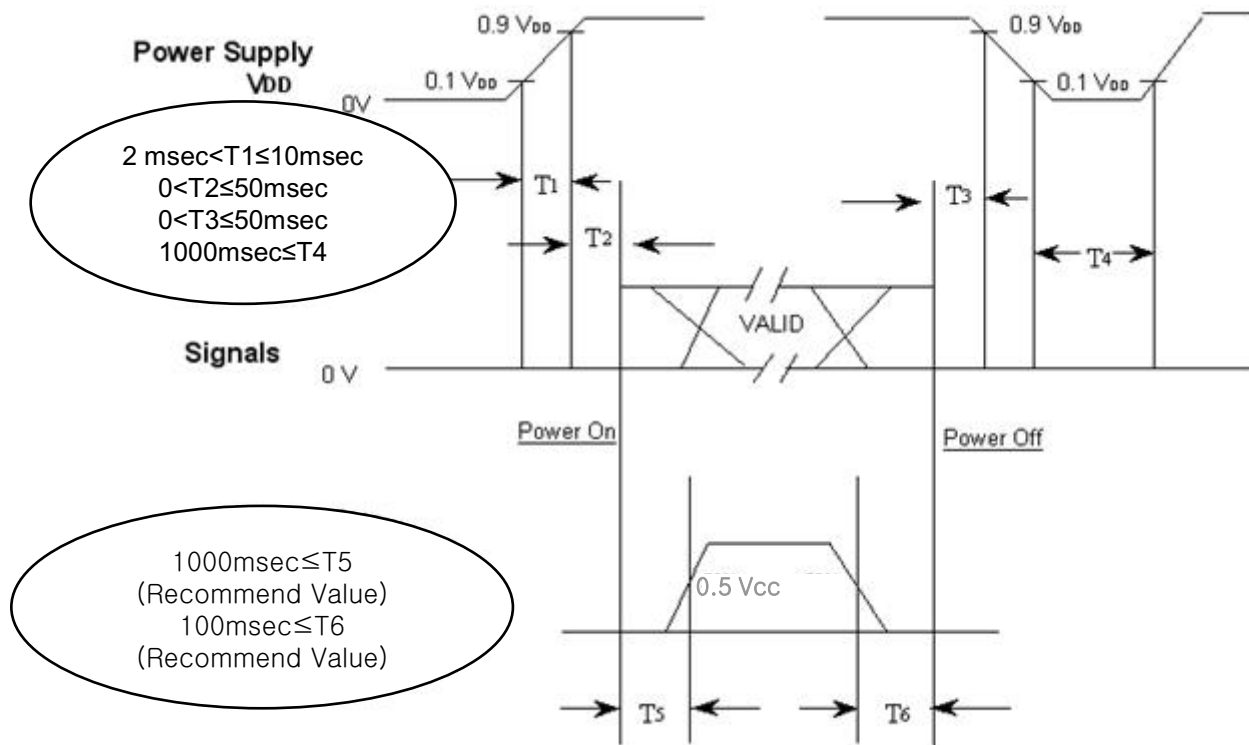


MODEL	LTA320AN12	Doc. No	06-000-G-20120117	Page	18 / 26
-------	------------	---------	-------------------	------	---------

5.3 Power ON/OFF Sequence

Samsung Secret

To prevent a latch-up or DC operation of the LCD Module, the power on/off sequence should be as the diagram below.



$T1$: V_{DD} rising time from 10% to 90%

$T2$: The time from V_{DD} to valid data at power ON.

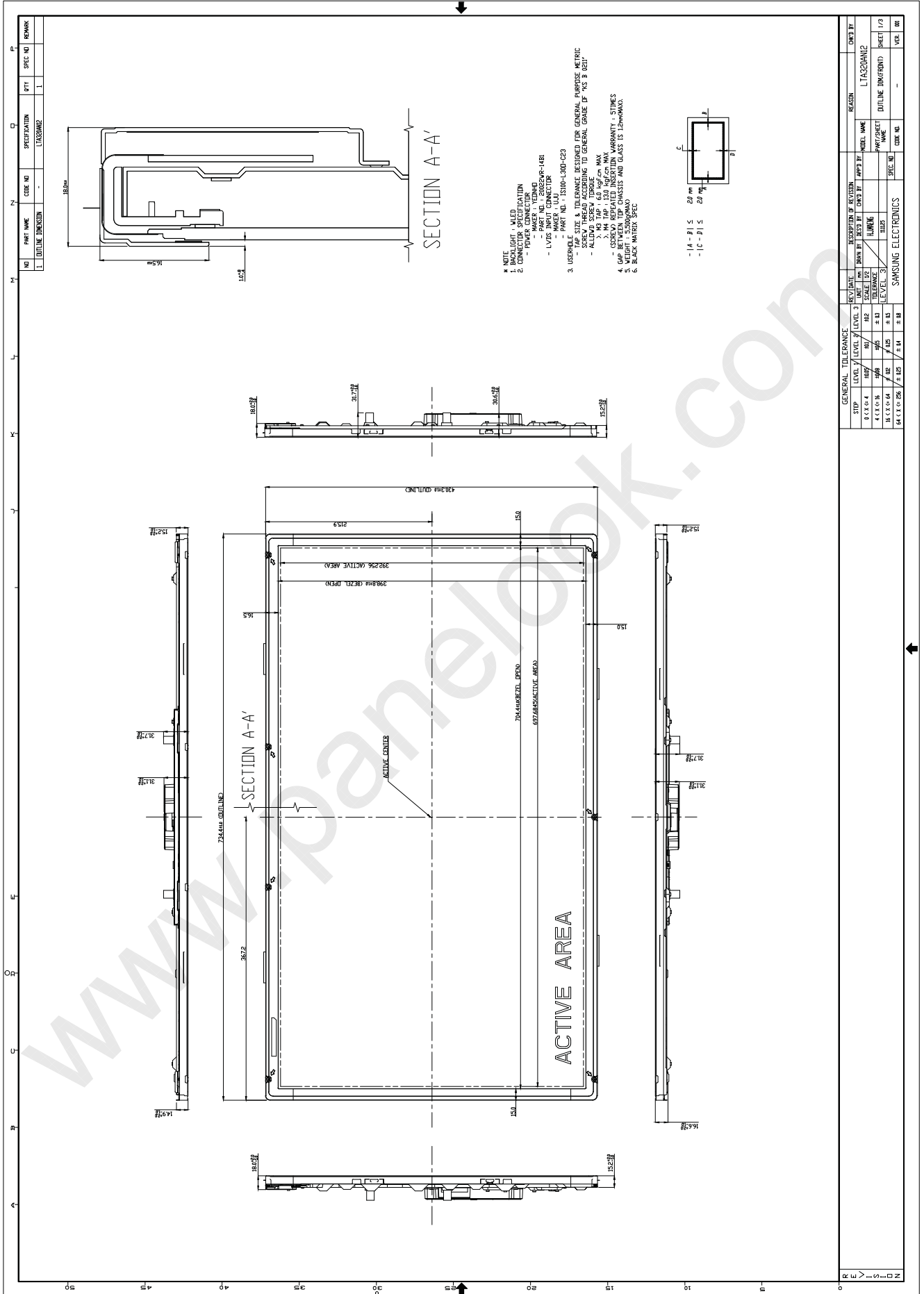
$T3$: The time from valid data off to V_{DD} off at power Off.

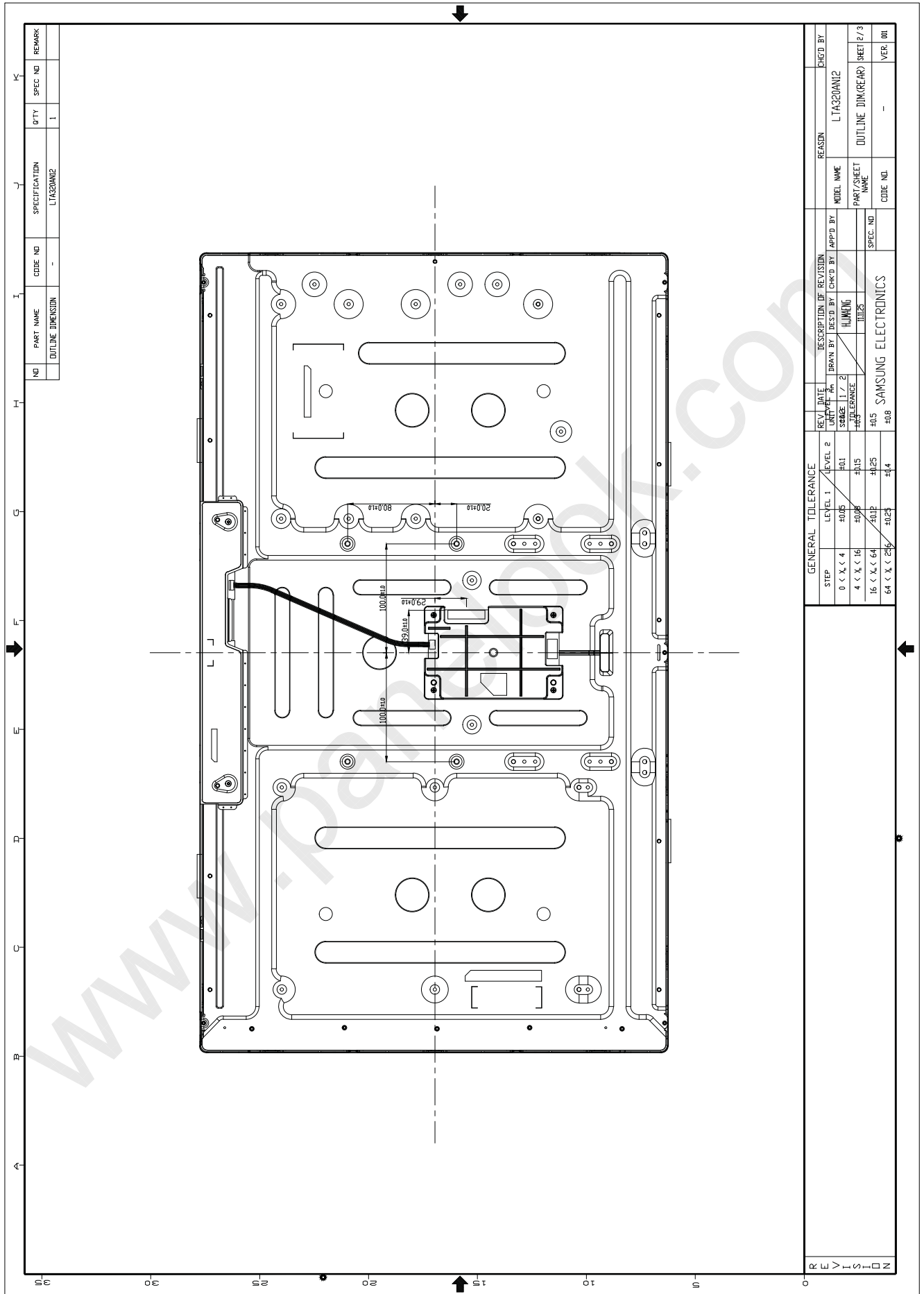
$T4$: V_{DD} off time for Windows restart

$T5$: The time from valid data to B/L enable at power ON.

$T6$: The time from valid data off to B/L disable at power Off.

- The supply voltage of the external system for the Module input should be the same as the definition of V_{DD} .
- Apply the lamp voltage within the LCD operation range. When the back light turns on before the LCD operation or the LCD turns off before the back light turns off, the display may momentarily show abnormal screen.
- In case of V_{DD} = off level, please keep the level of input signals low or keep a high impedance.
- $T4$ should be measured after the Module has been fully discharged between power off and on period.
- Interface signal should not be kept at high impedance when the power is on.
- In Case $T5$ is less than 1000msec and $T6$ is less than 100msec, Garbage Display can be seen. (It is not related to electrical function issue, Just for recommendation to prevent Garbage Display)

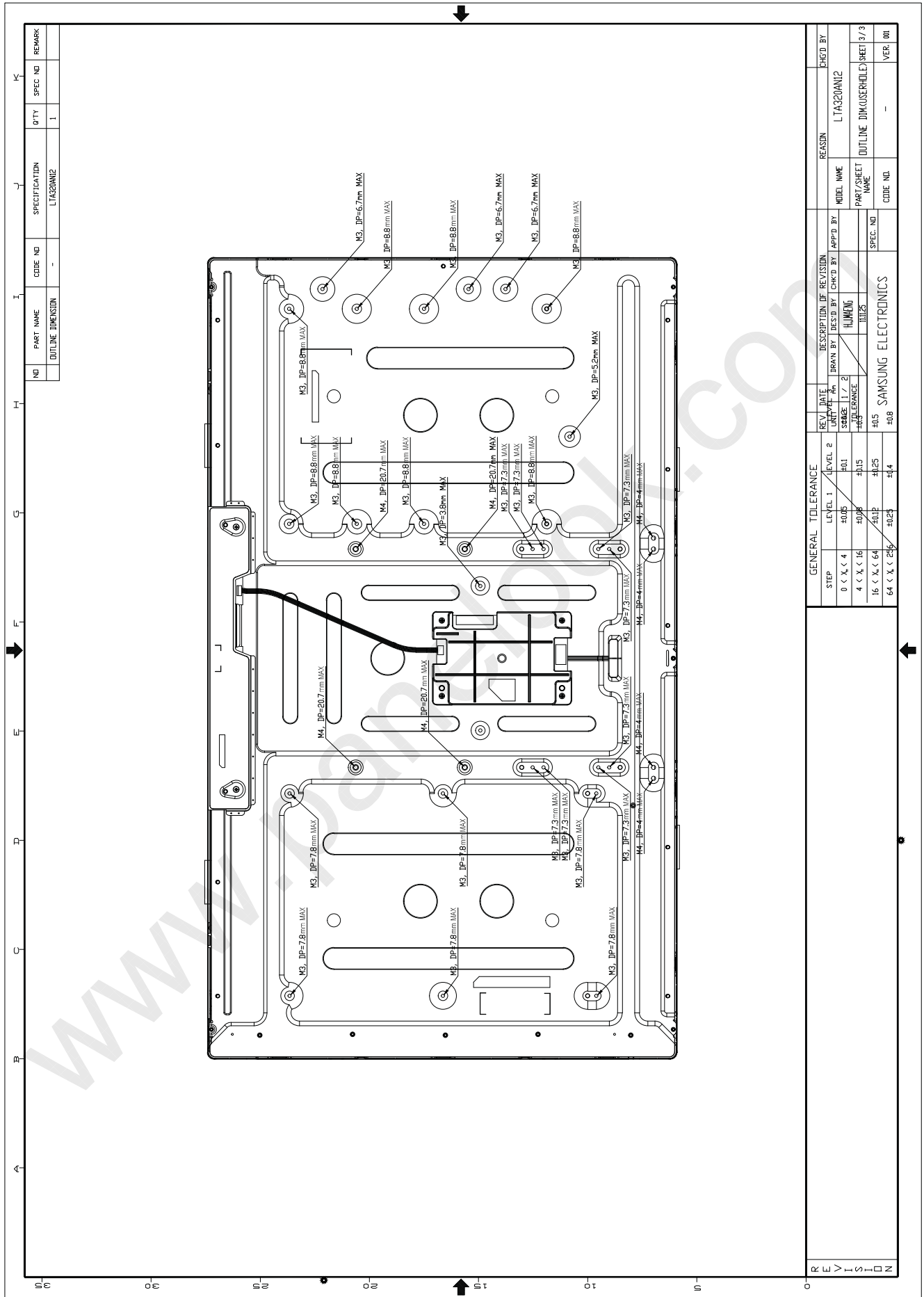




NO	PART NAME	CODE NO	SPECIFICATION	QTY	SPEC NO	REMARK
	OUTLINE DIMENSION	-	LTA320A12	1		

GENERAL TOLERANCE		REV.	DATE	DESCRIPTION OF REVISION	CHK'D BY	CHK'D BY
STEP	LEVEL 1 / LEVEL 2	UNIT	DATE	DES'D BY	CHK'D BY	APP'D BY
0 < X < 4	±0.05	mm		HJUNING		
4 < X < 16	±0.08	mm		JUNIP		
16 < X < 64	±0.12	mm				
64 < X < 256	±0.25	mm				
			±0.5			
			±0.8			

REASON	MODEL NAME	REASON	CHK'D BY
OUTLINE DIM(REF)	LTA320A12	OUTLINE DIM(REF)	
PART/SHEET NAME		PART/SHEET NAME	
CODE NO.		CODE NO.	
SPEC. NO.		SPEC. NO.	
VER. 00		VER. 00	



NO	PART NAME	CODE NO	SPECIFICATION	QTY	SPEC NO	REMARK
	OUTLINE DIMENSION	-	LTA20AN12	1		

GENERAL TOLERANCE		REV	DATE	DESCRIPTION OF REVISION	CHK'D BY	APP'D BY	REASON	CHGD BY
STEP	LEVEL 1 / LEVEL 2	UNIT	SCALE	DES'D BY	CHK'D BY	APP'D BY	MODEL NAME	CHGD BY
0 < X < 4	±0.05	mm	1 / 2	HUNING			LTA20AN12	
4 < X < 16	±0.08						PART/SHEET NAME	
16 < X < 64	±0.12						OUTLINE DIM(USEHOLE)	SHEET 3/3
64 < X < 256	±0.25						SPEC. NO	
							CODE NO	VER. 00

Samsung Secret

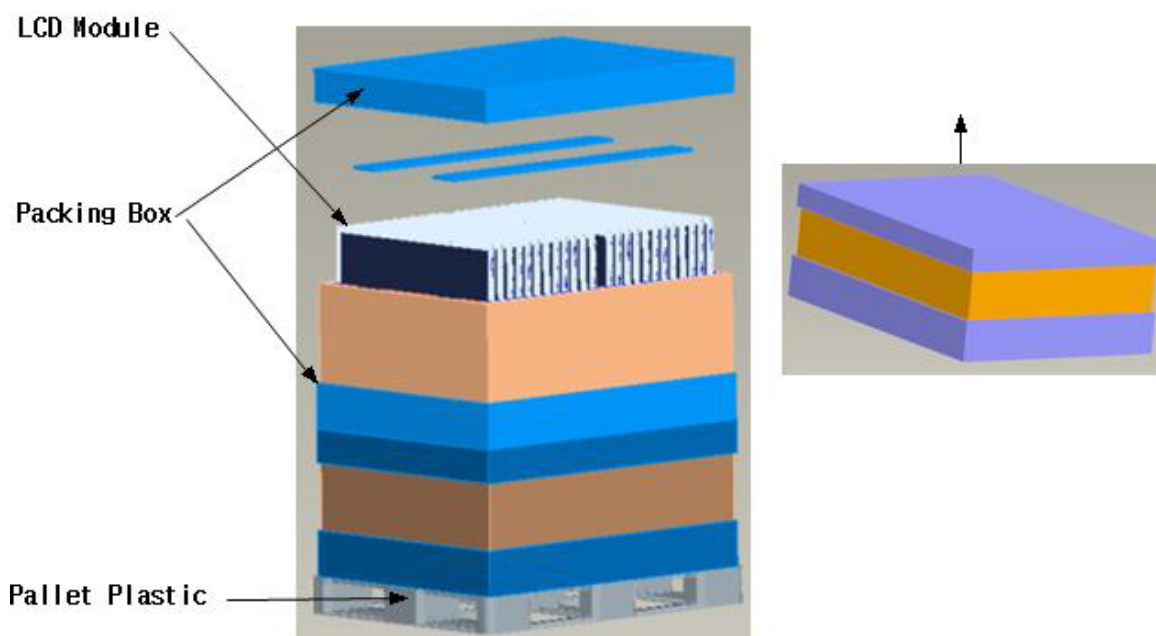
7. PACKING

7.1 CARTON (Internal Package)

(1) Packing Form

Corrugated fiberboard box and corrugated cardboard as shock absorber

(2) Packing Method



7.2 Packing Specification

Item	Specification	Remark
LCD Packing	24ea / Box 48ea / Pallet (Packing-Pallet Box)	- 5.5kg/LCD(48ea) : 264kg(Max.) - 15 kg / Packing Set : 30kg(Typ.) (1104X810X480) - Packing Material: Paper
Pallet	2 Box/Pallet	Pallet Weight: 5.3kg
Packing Direction	Vertical	-
Total Pallet Size	1150 * 850 * 1083	Length x Width x Height
Total Pallet Weight	300.74	Module (5.5 x 48) + Pallet (5.3 Kg) + Packing SET (15) x2 + Desiccant (0.03 x 48 = 1.44kg)

MODEL

LTA320AN12

Doc. No

06-000-G-20120117

Page

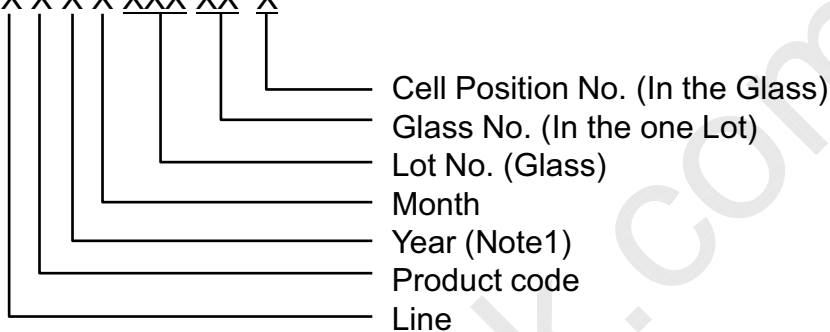
22 / 26

Samsung Secret

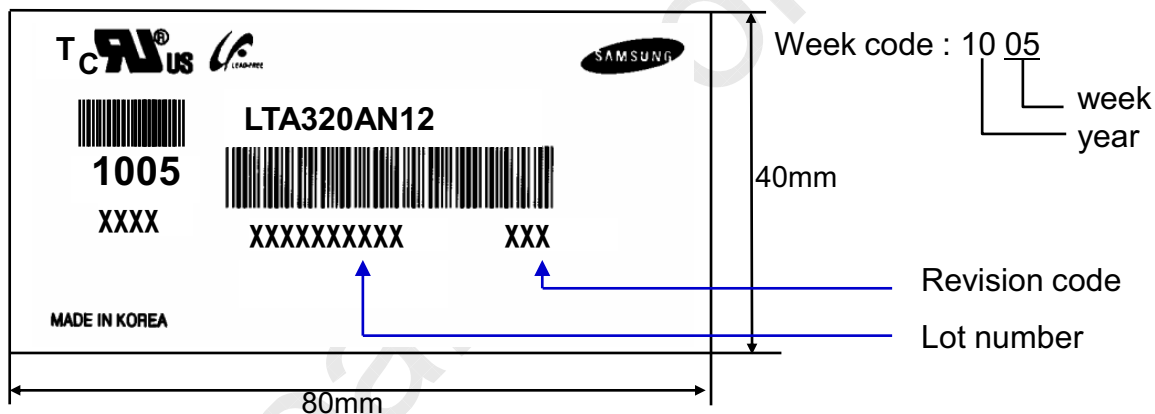
8. MARKING & OTHERS

A nameplate bearing followed by is affixed to a shipped product at the specified location on each product.

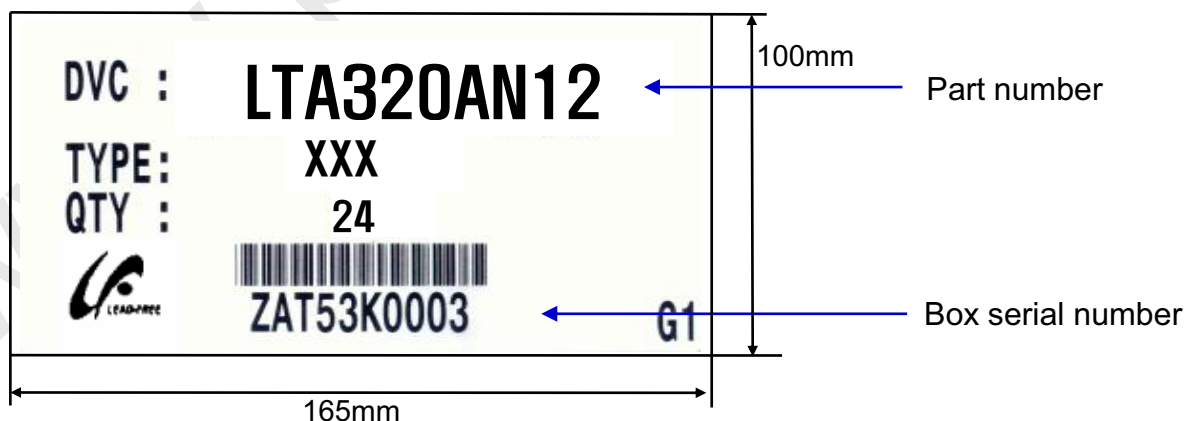
- (1) Part number : LTA320AN12
- (2) Revision: Three letters
- (3) Lot number : X X X X XXX XX X



(4) Nameplate Indication



(5) Packing box attach



(6) Others

- 1. After service part
 Lamps cannot be replaced because of the narrow bezel structure.

MODEL	LTA320AN12	Doc. No	06-000-G-20120117	Page	23 / 26
-------	------------	---------	-------------------	------	---------

9. General Precautions

Samsung Secret

9.1 Handling

- (a) When the Module is assembled, it should be attached to the system firmly using all mounting holes. Be careful not to twist and bend the Module.
- (b) Because the converter use high voltage, it should be disconnected from power before it is assembled or disassembled.
- (c) Refrain from strong mechanical shock and / or any force to the Module. In addition to damage, this may cause improper operation or damage to the Module and LED back light.
- (d) Note that polarizers are very fragile and could be damage easily. Do not press or scratch the surface harder than a HB pencil lead.
- (e) Wipe off water droplets or oil immediately. If you leave the droplets for a long time, staining or discoloration may occur.
- (f) If the surface of the polarizer is dirty, clean it using absorbent cotton or soft cloth.
- (g) Desirable cleaners are water, IPA(Isopropyl Alcohol) or Hexane. Do not use Ketone type materials(ex. Acetone), Ethyl alcohol, Toluene, Ethyl acid or Methyl chloride. It might permanent damage to the polarizer due to chemical reaction.
- (h) If the liquid crystal material leaks from the panel, it should be kept away from the eyes or mouth . In case of contact with hands, legs or clothes, it must be washed away with soap thoroughly.
- (i) Protect the module from Electrostatic discharge. Otherwise the ASIC IC or semiconductor would be damaged.
- (j) Use finger-stalls with soft gloves in order to keep display clean during the incoming inspection and assembly process.
- (k) Do not disassemble the Module.
- (l) Do not disassemble shield case of converter & C-PBA
- (m) Do not connect N.C pins. (Samsung internal use only)
- (n) Protection film for polarizer on the Module should be slowly peeled off just before use so that the electrostatic charge can be minimized. Must put on antistatic glove while handling a module
- (o) Pins of I/F connector should not be touched directly with bare hands.

MODEL

LTA320AN12

Doc. No

06-000-G-20120117

Page

24 / 26

Samsung Secret

9.2 Storage

We highly recommend to comply with the criteria in the table below.

Item	Unit	Min.	Max.
Storage Temperature	(°C)	10	40
Storage Humidity	(%rH)	35	75
Storage Life	12 Months		
Storage Condition	<ul style="list-style-type: none"> - The storage room should provide good ventilation and temperature control. - Products should not be placed on the floor, but on the Pallet away from a wall. - Prevent products from direct sunlight, moisture nor water; Be cautious of a build up of condensation. - Avoid other hazardous environment while storing goods. - If products delivered or kept in conditions of over the storage period of 3 months, the recommended temperature or humidity range, we recommend you leave them at a temperature of 20 °C and a humidity of 50% for 24 hours. 		

9.3 Operation

- (a) Do not connect or disconnect the Module in the "Power On" condition.
- (b) Power supply should always be turned on/off by the "Power on/off sequence"
- (c) Module has high frequency circuits. Sufficient suppression to the electromagnetic interference should be done by system manufacturers. Grounding and shielding methods may be important to minimize the interference.
- (d) The cable between the back light connector and its converter power supply should be connected directly with a minimized length. A longer cable between the back light and the converter may cause lower luminance of LED and may require higher startup voltage(Vs).

9.4 Operation Condition Guide

Samsung Secret

(a) The LCD product should be operated under normal conditions.

Normal condition is defined as below;

- Temperature : $20 \pm 15^{\circ}\text{C}$
- Humidity : $55 \pm 20\%$
- Display pattern : continually changing pattern (Not stationary)

(b) If the product will be used in extreme conditions such as high temperature, humidity, display patterns or operation time etc., It is strongly recommended to contact SEC for Application engineering advice. Otherwise, its reliability and function may not be guaranteed. Extreme conditions are commonly found at Airports, Transit Stations, Banks, Stock market, and Controlling systems.

9.5 Others

- (a) Ultra-violet ray filter is necessary for outdoor operation.
- (b) Avoid condensation of water. It may result in improper operation or disconnection of electrode.
- (c) Do not exceed the absolute maximum rating value. (supply voltage variation, input voltage variation, variation in part contents and environmental temperature, and so on)
Otherwise the Module may be damaged.
- (d) If the Module keeps displaying the same pattern for a long period of time, the image may be "sticked" to the screen.
To avoid image sticking, it is recommended to use a screen saver.
- (e) This Module has its circuitry PCB's on the rear side and should be handled carefully in order not to be stressed.
- (f) Please contact SEC in advance when you display the same pattern for a long time.

MODEL

LTA320AN12

Doc. No

06-000-G-20120117

Page

26 / 26