

**Samsung Secret**

Product Information

Customer :**DATE : Feb. 24. 2012****SAMSUNG TFT-LCD****MODEL : LTA460HQ18**

The Information Described in this Specification is Preliminary and can be changed without prior notice

LCD Business

Samsung Electronics Co . , LTD.

MODEL

LTA460HQ18

Doc. No

06-002-G-20120224

Page

1 / 26

Samsung Secret**Contents**

Revision History	(3)
General Description	(4)
General Information	(4)
1. Absolute Maximum Ratings	(5)
2. Optical Characteristics	(6)
3. Electrical Characteristics	(9)
3.1 TFT LCD Module	
3.2 Back Light Unit	
3.3 converter Input & Specification	
4. Input Terminal Pin Assignment	(12)
4.1 Input Signal & Power	
4.2 Converter Input Pin Configuration	
4.3 Converter Input Power Sequence	
4.4 LVDS Interface	
4.5 Input Signals, Basic Display Colors and Gray Scale of Each Color	
5. Interface Timing	(16)
5.1 Timing Parameters (DE only mode)	
5.2 LVDS Input data Characteristics	
5.3 3D mode Sequence	
5.4 Timing Diagrams of interface Signal (DE only mode)	
5.5 Power ON/OFF Sequence	
6. Outline Dimension	(20)
7. Packing	(22)
8. Marking & Others	(23)
9. General Precaution	(24)
9.1 Handling	
9.2 Storage	
9.3 Operation	
9.4 Operation Condition Guide	
9.5 Others	

MODEL

LTA460HQ18

Doc. No

06-002-G-20120224

Page

2 / 26

Revision History

Samsung Secret

Date	Rev. No	Page	Summary
Dec. 20. 2011	000	all	First issued
Feb. 01. 2012	001	4 5 6 9 11 12 13 16 17 22	Modify the module size_depth Modify the maximum rating of shock Update the optical characteristics Update the electrical characteristics Update the converter spec Modify pin map of input signal Modify the power sequence Modify the parameter Modify the 3D mode sequence Modify the packing spec
Feb. 24. 2012	002	4 12 14 15 16	Revise the display colors 8bit to 10bit Revise the input signal - Pin no.7 : LVDS_sel → GND Revise the note1) - How to deal LVDS 4 th channel when the 8bit signal input from SET Revise the LVDS interface (JEIDA only) Gray scale is revised as 10bit standard t_{RSLM} , t_{RSRM} is revised as 75MHz input standard

MODEL

LTA460HQ18

Doc. No

06-002-G-20120224

Page

3 / 26

General Description

Samsung Secret

Description

LTA460HQ18 is a color active matrix liquid crystal display (LCD) that uses amorphous silicon TFT(Thin Film Transistor) as switching components. This model is composed of a TFT LCD panel, a driver circuit and a back light unit. The resolution of a 46.0" is 1920 x 1080 and this model can display up to 1.07 Billion colors with wide viewing angle of 89° or higher in all directions. This panel is intended to support applications to provide a excellent performance for Flat Panel Display such as Home-alone Multimedia TFT-LCD TV and High Definition TV

Features

- RoHS compliance (Pb-free)
- High contrast ratio & aperture ratio with wide color gamut
- SVA(Super Vertical Align) mode
- Wide viewing angle ($\pm 178^\circ$)
- High speed response
- FHD resolution (16:9)
- Low Power consumption
- Edge Type LED (Light Emitted Diode) BLU
- DE (Data Enable) mode
- 2ch LVDS (Low Voltage Differential Signaling) interface

General Information

Items	Specification	Unit	Note
Module Size	1045.9(H) x 602.1 (V)	mm	± 1.0 mm
	34.2 (D)		max
Weight	12300	g	max
Pixel Pitch	0.530 (H) x 0.530 (W)	mm	
Active Display Area	1018.08(H) X 572.67(V)	mm	
Surface Treatment	Antiglare		
Display Colors	10bit	colors	
Number of Pixels	1920 x 1080	pixel	
Pixel Arrangement	RGB vertical stripe		
Display Mode	Normally Black		
Luminance of White	400 (Typ.)	cd/m ²	

MODEL

LTA460HQ18

Doc. No

06-002-G-20120224

Page

4 / 26

Samsung Secret

1. Absolute Maximum Ratings

If the condition exceeds maximum ratings, it can cause malfunction or unrecoverable damage to the device.

Item	Symbol	Min.	Max.	Unit	Note
Power Supply Voltage	V_{DD}	GND-0.3	13.2	V	(1)
Dimming Control	Max. Lum	-	5	V	
Storage temperature	T_{STG}	-20	60	°C	(2)
Operating temperature	T_{OPR}	0	50	°C	
Shock (non - operating)	X,Y	-	40	G	(3),(5)
	Z		30		
Vibration (non - operating)	V_{NOP}	-	1.5	G	(4),(5)

Note (1) $T_a = 25 \pm 2 \text{ }^\circ\text{C}$

(2) Temperature and relative humidity range are shown in the figure below.

- 90 % RH Max. ($T_a \leq 39 \text{ }^\circ\text{C}$)
- Relative Humidity is 90% or less. ($T_a > 39 \text{ }^\circ\text{C}$)
- No condensation

(3) 11ms, sine wave, one time for $\pm X, \pm Y, \pm Z$ axis

(4) 10-300 Hz, Sweep rate 10min, 30min for X,Y,Z axis

(5) A JIG used for test should be strong so that the module is not bent or twisted.

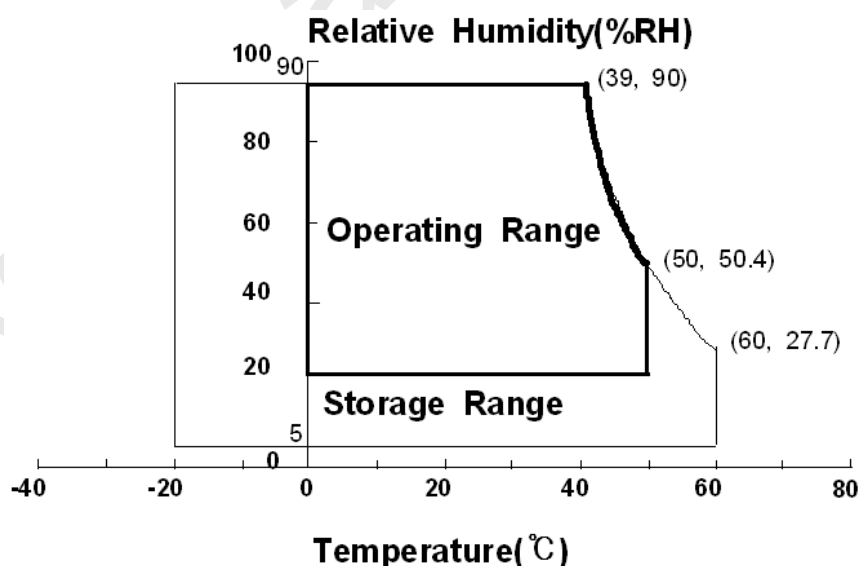


Fig. Temperature and Relative humidity range

MODEL

LTA460HQ18

Doc. No

06-002-G-20120224

Page

5 / 26

2. Optical Characteristics

Samsung Secret

The optical characteristics should be measured in a dark room or equivalent.

Measuring equipment : TOPCON RD-80S, TOPCON SR-3, ELDIM EZ-Contrast

(Ta = 25 ± 2°C, VDD=12V, fv= 60Hz, f_{DCLK} = 148.5MHz)

Item	Symbol	Condition	Min.	Typ.	Max.	Unit	Note	
Contrast Ratio (Center of screen)	C/R		3000	4000	-		(1) SR-3	
Response Time	G-to-G	Tg	-	6	18	msec	(3) RD-80S	
Luminance of White (Center of screen)	Y _L		350	400	-	cd/m ²	(4) SR-3	
Color Chromaticity (CIE 1931)	Red	Rx	Normal q _{L,R} = 0 q _{U,D} = 0 Viewing Angle	0.650	TYP. -0.03	TYP. +0.03	(5),(6) SR-3	
		Ry		0.330				
	Green	Gx		0.310				
		Gy		0.600				
	Blue	Bx		0.150				
		By		0.060				
	White	Wx		0.280				
		Wy		0.290				
Color Gamut	-		-	70	-	%	(5) SR-3	
Color Temperature	-		7000	10000	-	K		
Viewing Angle	Hor.	q _L	C/R≥10	75	89	-	Degree	(6) EZ-Contrast
		q _R		75	89	-		
	Ver.	q _U		75	89	-		
		q _D		75	89	-		
White Brightness Uniformity (9 Points)	B _{uni}		-	-	25	%	(2) SR-3	

- Test Equipment Setup

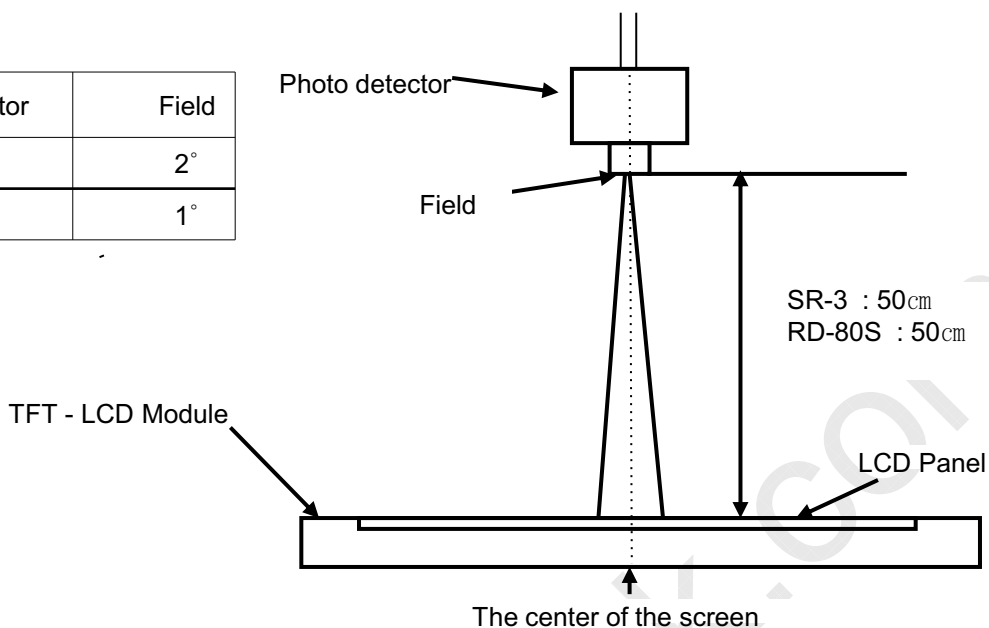
The measurement should be executed in a stable, windless and dark room between 40min and 60min after lighting the back light at the given temperature for stabilization of the back light. This should be measured in the center of screen.

Environment condition : Ta = 25 ± 2 °C

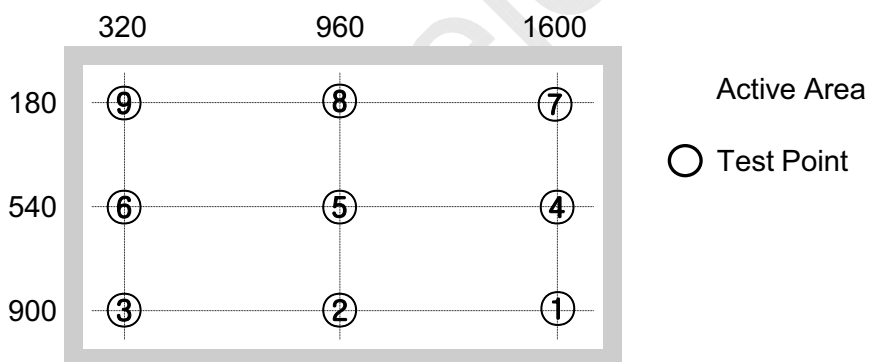
MODEL	LTA460HQ18	Doc. No	06-002-G-20120224	Page	6 / 26
-------	------------	---------	-------------------	------	--------

Samsung Secret

Photo detector	Field
SR-3	2°
RD-80S	1°



- Definition of test point



Note (1) Definition of Contrast Ratio (C/R)

: Ratio of gray max (Gmax) & gray min (Gmin) at the center point ⑤ of the panel

$$C/R = \frac{G_{max}}{G_{min}}$$

Gmax : Luminance with all pixels white

Gmin : Luminance with all pixels black

MODEL	LTA460HQ18	Doc. No	06-002-G-20120224	Page	7 / 26
-------	------------	---------	-------------------	------	--------

Samsung Secret

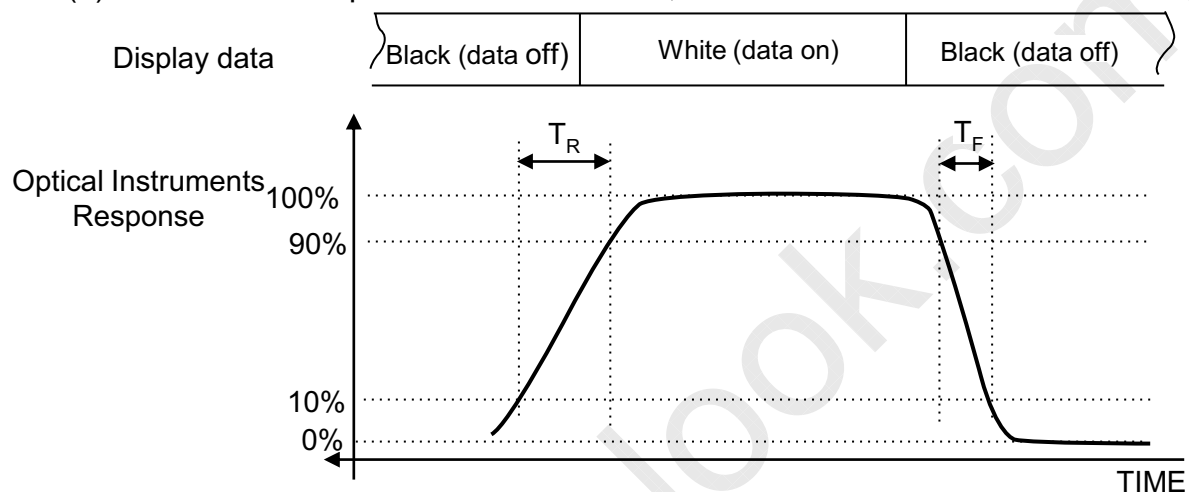
Note (2) Definition of 9 points brightness uniformity (Test pattern : Full White)

$$B_{uni} = 100 * \frac{(B_{max} - B_{min})}{B_{max}}$$

Bmax : Maximum brightness

Bmin : Minimum brightness

Note (3) Definition of Response time : Sum of Tr, Tf



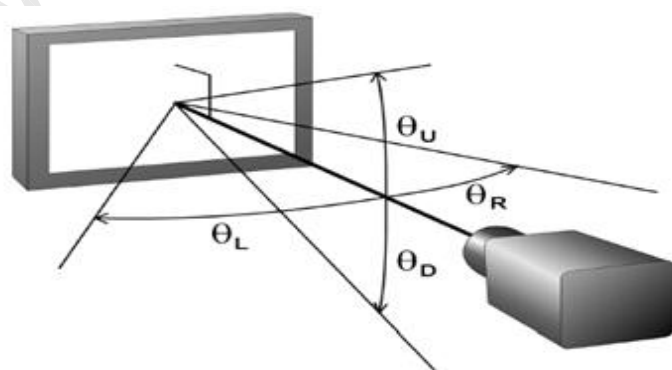
Note (4) Definition of Luminance of White : Luminance of white at center point ⑤

Note (5) Definition of Color Chromaticity (CIE 1931)

Color coordinate of Red, Green, Blue & White at center point ⑤

Note (6) Definition of Viewing Angle

: Viewing angle range (C/R ≥ 10)



MODEL

LTA460HQ18

Doc. No

06-002-G-20120224

Page

8 / 26

3. Electrical Characteristics

Samsung Secret

3.1 TFT LCD Module

The connector for display data & timing signal should be connected.

$T_a = 25^\circ\text{C} \pm 2^\circ\text{C}$

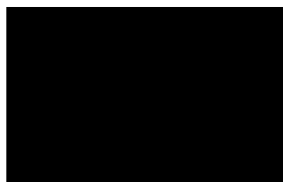
Item	Symbol	Min.	Typ.	Max.	Unit	Note
Voltage of Power Supply	V_{DD}	10.8	12.0	13.2	V	(1)
Current of Power Supply	(a) Black	-	550	700	mA	(2),(3)
	(b) White	-	650	850	mA	
	(c) N-PTN	-	1100	1500	mA	
Vsync Frequency	f_V	48	60	62.5	Hz	
Hsync Frequency	f_H	60	67.5	70	kHz	
Main Frequency	f_{DCLK}	130	148.5	152.5	MHz	
Rush Current	I_{RUSH}	-	-	4	A	(4)

Note (1) The ripple voltage should be controlled under 10% of V_{DD} .

(2) $f_V=60\text{Hz}$, $f_{DCLK} = 148.5\text{MHz}$, $V_{DD} = 12.0\text{V}$, DC Current.

(3) Power dissipation check pattern (LCD Module only)

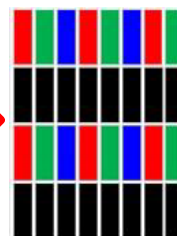
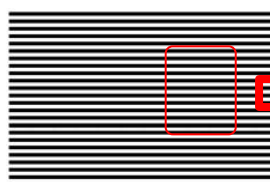
a) Black Pattern



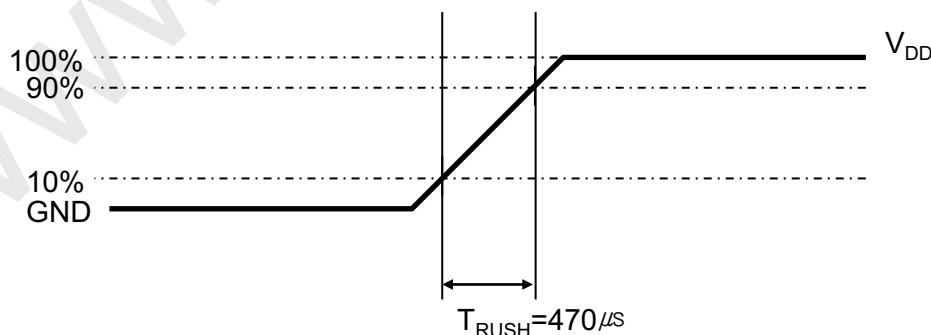
b) White Pattern



c) N - PTN



(4) Measurement Conditions



Rush Current I_{RUSH} can be measured when T_{RUSH} is $470\mu\text{s}$.

MODEL

LTA460HQ18

Doc. No

06-002-G-20120224

Page

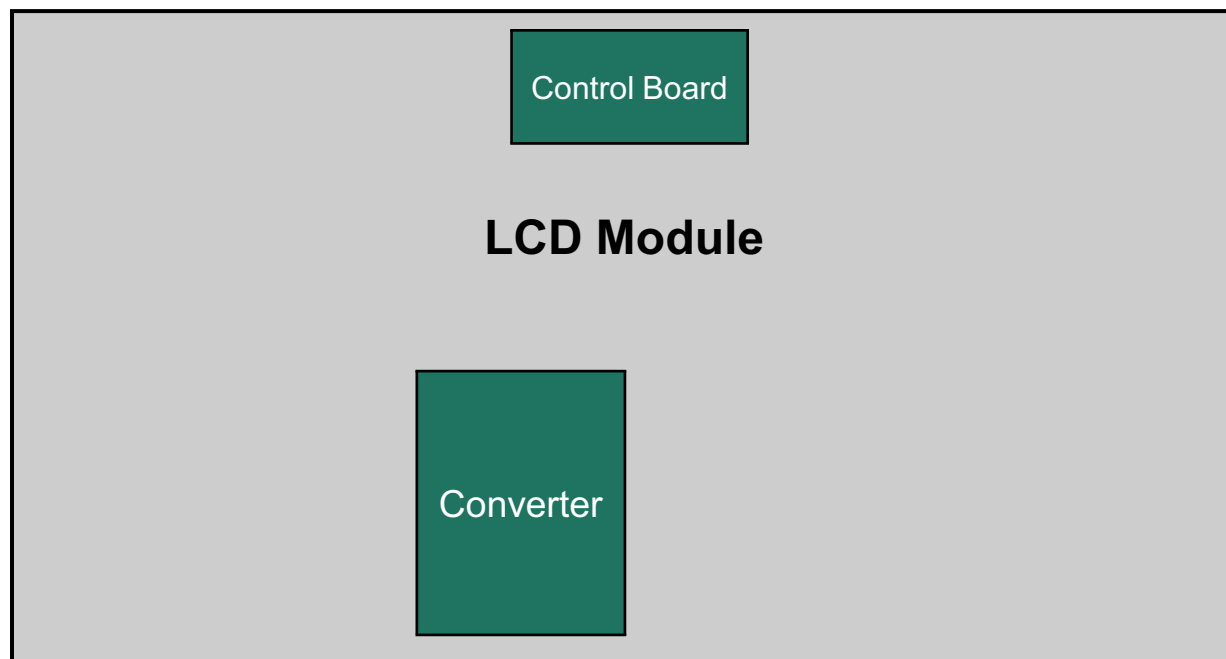
9 / 26

Samsung Secret

3.2 Back Light Unit

The back light unit contains Edge type White LEDs (Light Emitting Diode)

Ta=25 ± 2°C



Item	Symbol	Min.	Typ.	Max.	Unit	Note
Operating Life Time	Hr	30,000	-	-	Hour	(1)

Note (1) It is defined as the time to take until the brightness reduces to 50% of its original value.

[Operating condition : Ta = 25±2°C , For LED package only]

MODEL

LTA460HQ18

Doc. No

06-002-G-20120224

Page

10 / 26

3.3 Converter Input Condition & Specification

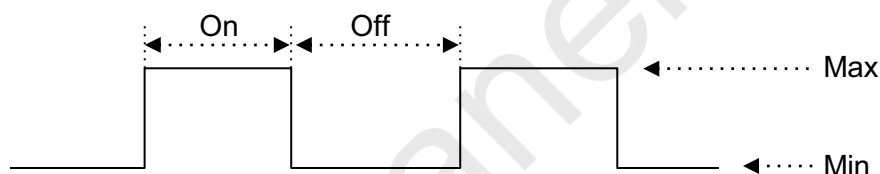
Samsung Secret

Items	Symbol	Conditions	Specifications			Unit	Note
			Min.	Typ.	Max.		
Input Voltage	V _{in}	-	22	24	26	V	Ta=25±2 °C
Input Current	I _{RUSH}	V _{in} =24.0V V _{dim} =3.3V	-	-	4.80	A	Normal
Backlight On/Off	ON	V _{in} =24.0 V	3	-	5.25	V	
	OFF	V _{in} =24.0 V	0	-	0.4		
Dimming Range	V _{DIM}	V _{in} :22~26V	0	-	3.3	V	Note(2)
Dimming Duty Output	D max	V _{in} =24V Dim:3.3V	-	-	100	%	
	D min	V _{in} =24V Dim:0V	1	-	-		
Dimming Frequency	F _{PWM}	V _{in} =24.0 V	140	150	160	Hz	
External Dimming Duty Range	EX_Dim	V _{in} =22.0~26.0 V Dim Pin(#13):floting	1	-	100	%	
External Dimming Frequency Range	F _{EX_PWM}		-	150	-	Hz	
External Dimming Signal Level	V _{PWM}	High (ON)	3	-	5.25	V	
		Low (Off)	0	-	0.4		

Note (1) All data is measured after 120min warm-up.

Note (2) V_{Dim} and Ex_Dim are available only at Normal 2D mode. (3D ENA = OFF)

Note (3) Duty = On / (On+Off) * 100



- Additional Appendix for Supply Current (Only for Reference_2D mode)

Items	Symbol	Conditions	Min.	Typ.	Max.	Unit
Input Current	lin_overshoot	V _{in} = 24V, Dim=3.3V (Within 1hr at BLU on)	-	3.76	3.87	A
	lin_saturation	V _{in} = 24V, Dim=3.3V (After 1hr Aging)	-	3.22	3.32	A
Power Consumption (Back light)	P_Inrush	V _{in} =24.0V, V _{dim} = 3.3V	-	-	115.2	Watt
	P_overshoot	V _{in} = 24V, Dim=3.3V (Within 1hr at BLU on)	-	90.24	92.88	Watt
	P_saturation	V _{in} = 24V, Dim=3.3V (After 1hr Aging)	-	77.28	79.68	Watt

MODEL

LTA460HQ18

Doc. No

06-002-G-20120224

Page

11 / 26

4. Input Terminal Pin Assignment

Samsung Secret

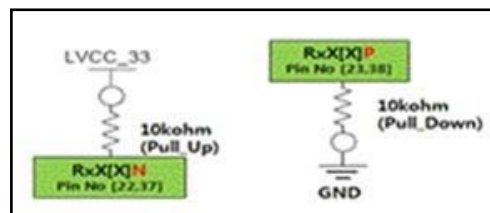
4.1 Input Signal & Power

Pin	Description	Pin	Description
1	NC	26	3D EN
2	NC	27	NC
3	NC	28	Rx2[0]N
4	NC	29	Rx2[0]P
5	3D_Sync_O	30	Rx2[1]N
6	GND	31	Rx2[1]P
7	GND	32	Rx2[2]N
8	NC	33	Rx2[2]P
9	NC	34	GND
10	NC	35	Rx2CLKN
11	GND	36	Rx2CLKP
12	Rx1[0]N	37	GND
13	Rx1[0]P	38	Rx2[3]N
14	Rx1[1]N	39	Rx2[3]P
15	Rx1[1]P	40	Rx2[4]N *note (1)
16	Rx1[2]N	41	Rx2[4]P *note (1)
17	Rx1[2]P	42	NC
18	GND	43	NC
19	Rx1CLKN	44	GND
20	Rx1CLKP	45	GND
21	GND	46	GND
22	Rx1[3]N	47	NC
23	Rx1[3]P	48	VCC
24	Rx1[4]N *note (1)	49	VCC
25	Rx1[4]P *note (1)	50	VCC
		51	VCC

Note(1) If 8bit of LVDS signal input from SET,
Keep [4]channel **level '0'**



Note(2) 3D format is set with interleave function only
Note(3) NC : No connection, Pins are used only for SEC.



MODEL

LTA460HQ18

Doc. No

06-002-G-20120224

Page

12 / 26

4.2. Converter Input Pin Configuration

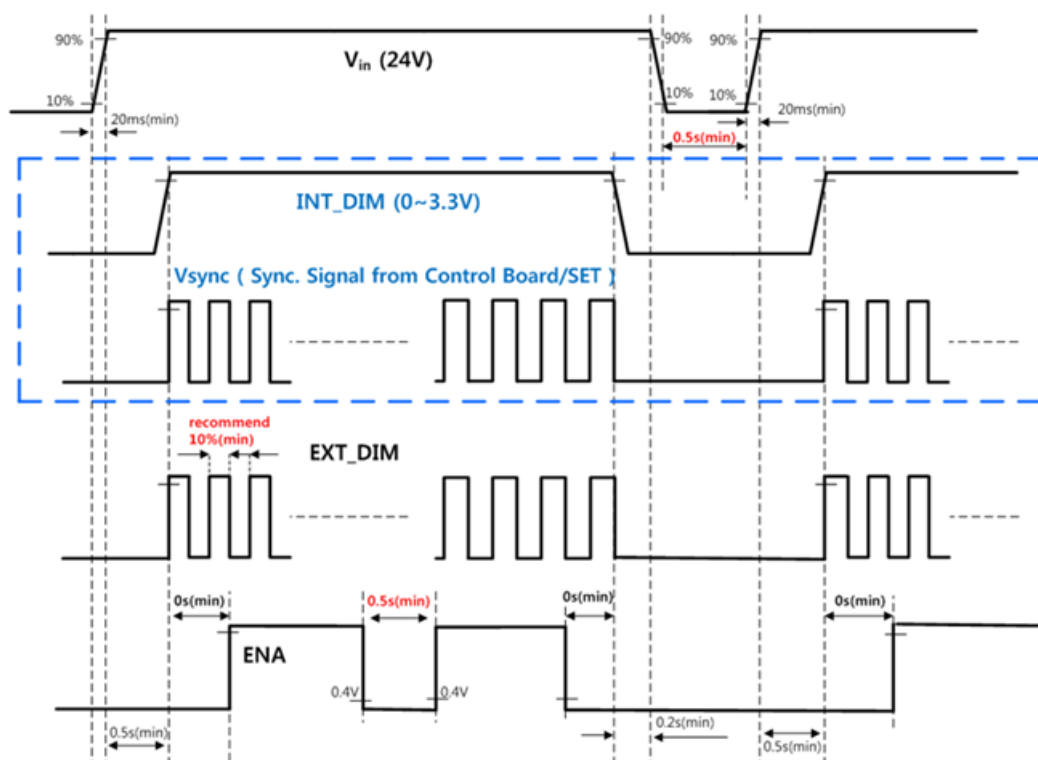
Samsung Secret

Connector : Yeon-ho, 20022WR-014B1

Pin No.	Pin Configuration(FUNCTION)
	Master
1 ~5	24 V
6~10	GND
11	Converter operation status Output
12	Converter On /Off Control [ON:3 - 5.25 V, OFF: 0 - 0.4 V]
13	Internal Dimming Control [0V:Min, 3.3V:Max] *Note(1)
14	External PWM [1~100 %] *Note(1)

Note(1) If use Dimming Control, Pin 14 Must be N.C
If use External PWM, Pin 13 Must be N.C

4.3. Converter Input Power Sequence



Note) SEQUENCE : ON = V_{in}(24V) > Dimming Control ≥ Backlight On/Off
OFF = Backlight On/Off ≥ Dimming Control > V_{in}(24V)

MODEL

LTA460HQ18

Doc. No

06-002-G-20120224

Page

13 / 26

4.4 LVDS Interface

Samsung Secret

- LVDS Receiver : T-con (merged)
- Data Format (JEIDA only)

	LVDS pin	JEIDA -DATA
TxOUT/RxIN0	TxIN/RxOUT0	R4
	TxIN/RxOUT1	R5
	TxIN/RxOUT2	R6
	TxIN/RxOUT3	R7
	TxIN/RxOUT4	R8
	TxIN/RxOUT6	R9
	TxIN/RxOUT7	G4
TxOUT/RxIN1	TxIN/RxOUT8	G5
	TxIN/RxOUT9	G6
	TxIN/RxOUT12	G7
	TxIN/RxOUT13	G8
	TxIN/RxOUT14	G9
	TxIN/RxOUT15	B4
	TxIN/RxOUT18	B5
TxOUT/RxIN2	TxIN/RxOUT19	B6
	TxIN/RxOUT20	B7
	TxIN/RxOUT21	B8
	TxIN/RxOUT22	B9
	TxIN/RxOUT24	HSYNC
	TxIN/RxOUT25	VSYNC
	TxIN/RxOUT26	DEN
TxOUT/RxIN3	TxIN/RxOUT27	R2
	TxIN/RxOUT5	R3
	TxIN/RxOUT10	G2
	TxIN/RxOUT11	G3
	TxIN/RxOUT16	B2
	TxIN/RxOUT17	B3
	TxIN/RxOUT23	RESERVED
TxOUT/RxIN4	TxIN/RxOUT28	R0
	TxIN/RxOUT29	R1
	TxIN/RxOUT30	G0
	TxIN/RxOUT31	G1
	TxIN/RxOUT32	B0
	TxIN/RxOUT33	B1
	TxIN/RxOUT34	RESERVED

MODEL

LTA460HQ18

Doc. No

06-002-G-20120224

Page

14 / 26

Samsung Secret

4.5 Input Signals, Basic Display Colors and Gray Scale of Each Color

COLOR	DISPLAY (10bit)	DATA SIGNAL																												GRAY SCALE LEVEL	
		RED										GREEN										BLUE									
		R0	R1	R2	R3	R4	R5	R6	R7	R8	R9	G0	G1	G2	G3	G4	G5	G6	G7	G8	G9	B0	B1	B2	B3	B4	B5	B6	B7		B8
BASIC COLOR	BLACK	0	0	0	0	0	0	0	0	0	0	0	0	0	0	0	0	0	0	0	0	0	0	0	0	0	0	0	0	0	-
	BLUE	0	0	0	0	0	0	0	0	0	0	0	0	0	0	0	0	0	0	0	0	1	1	1	1	1	1	1	1	1	-
	GREEN	0	0	0	0	0	0	0	0	0	0	1	1	1	1	1	1	1	1	1	1	0	0	0	0	0	0	0	0	0	-
	CYAN	0	0	0	0	0	0	0	0	0	0	1	1	1	1	1	1	1	1	1	1	1	1	1	1	1	1	1	1	1	-
	RED	1	1	1	1	1	1	1	1	1	1	0	0	0	0	0	0	0	0	0	0	0	0	0	0	0	0	0	0	0	-
	MAGENTA	1	1	1	1	1	1	1	1	1	1	0	0	0	0	0	0	0	0	0	0	1	1	1	1	1	1	1	1	1	-
	YELLOW	1	1	1	1	1	1	1	1	1	1	1	1	1	1	1	1	1	1	1	1	0	0	0	0	0	0	0	0	0	-
	WHITE	1	1	1	1	1	1	1	1	1	1	1	1	1	1	1	1	1	1	1	1	1	1	1	1	1	1	1	1	1	-
GRAY SCALE OF RED	BLACK	0	0	0	0	0	0	0	0	0	0	0	0	0	0	0	0	0	0	0	0	0	0	0	0	0	0	0	0	R0	
	DARK ↑	1	0	0	0	0	0	0	0	0	0	0	0	0	0	0	0	0	0	0	0	0	0	0	0	0	0	0	0	R1	
		0	1	0	0	0	0	0	0	0	0	0	0	0	0	0	0	0	0	0	0	0	0	0	0	0	0	0	0	R2	
		:	:	:	:	:	:	:	:	:	:	:	:	:	:	:	:	:	:	:	:	:	:	:	:	:	:	:	:	:	R3~R1020
		:	:	:	:	:	:	:	:	:	:	:	:	:	:	:	:	:	:	:	:	:	:	:	:	:	:	:	:	:	
	↓ LIGHT	1	0	1	1	1	1	1	1	1	1	0	0	0	0	0	0	0	0	0	0	0	0	0	0	0	0	0	0	R1021	
		0	1	1	1	1	1	1	1	1	1	0	0	0	0	0	0	0	0	0	0	0	0	0	0	0	0	0	0	R1022	
	RED	1	1	1	1	1	1	1	1	1	1	0	0	0	0	0	0	0	0	0	0	0	0	0	0	0	0	0	0	R1023	
GRAY SCALE OF GREEN	BLACK	0	0	0	0	0	0	0	0	0	0	0	0	0	0	0	0	0	0	0	0	0	0	0	0	0	0	0	0	G0	
	DARK ↑	0	0	0	0	0	0	0	0	0	0	1	0	0	0	0	0	0	0	0	0	0	0	0	0	0	0	0	0	G1	
		0	0	0	0	0	0	0	0	0	0	0	1	0	0	0	0	0	0	0	0	0	0	0	0	0	0	0	0	G2	
		:	:	:	:	:	:	:	:	:	:	:	:	:	:	:	:	:	:	:	:	:	:	:	:	:	:	:	:	G3~G1020	
		:	:	:	:	:	:	:	:	:	:	:	:	:	:	:	:	:	:	:	:	:	:	:	:	:	:	:	:		
	↓ LIGHT	0	0	0	0	0	0	0	0	0	0	1	0	1	1	1	1	1	1	1	1	0	0	0	0	0	0	0	0	G1021	
		0	0	0	0	0	0	0	0	0	0	1	1	1	1	1	1	1	1	1	1	0	0	0	0	0	0	0	0	G1022	
	GREEN	0	0	0	0	0	0	0	0	0	0	1	1	1	1	1	1	1	1	1	1	0	0	0	0	0	0	0	0	G1023	
GRAY SCALE OF BLUE	BLACK	0	0	0	0	0	0	0	0	0	0	0	0	0	0	0	0	0	0	0	0	0	0	0	0	0	0	0	0	B0	
	DARK ↑	0	0	0	0	0	0	0	0	0	0	0	0	0	0	0	0	0	0	0	0	1	0	0	0	0	0	0	0	B1	
		0	0	0	0	0	0	0	0	0	0	0	0	0	0	0	0	0	0	0	0	0	1	0	0	0	0	0	0	B2	
		:	:	:	:	:	:	:	:	:	:	:	:	:	:	:	:	:	:	:	:	:	:	:	:	:	:	:	:	B3~B1020	
		:	:	:	:	:	:	:	:	:	:	:	:	:	:	:	:	:	:	:	:	:	:	:	:	:	:	:	:		
	↓ LIGHT	0	0	0	0	0	0	0	0	0	0	0	0	0	0	0	0	0	0	0	0	1	0	1	1	1	1	1	1	B1021	
		0	0	0	0	0	0	0	0	0	0	0	0	0	0	0	0	0	0	0	0	0	1	1	1	1	1	1	1	B1022	
	BLUE	0	0	0	0	0	0	0	0	0	0	0	0	0	0	0	0	0	0	0	0	1	1	1	1	1	1	1	1	B1023	

Note) Definition of Gray :

Rn : Red Gray, Gn : Green Gray, Bn : Blue Gray (n = Gray level)

Input Signal : 0 = Low level voltage, 1 = High level voltage

MODEL	LTA460HQ18	Doc. No	06-002-G-20120224	Page	15 / 26
-------	------------	---------	-------------------	------	---------

Samsung Secret

5. Interface Timing

5.1 Timing Parameters (DE mode)

SIGNAL	ITEM	SYMBOL	MIN.	TYP.	MAX.	Unit	NOTE
Clock	Frequency	$1/T_C$	130	148.5	152.5	MHz	-
Hsync		F_H	60	67.5	70	KHz	-
Vsync		F_V	48	60	62.5	Hz	-
Vertical Display Term	Active Display Period	T_{VD}	-	1080	-	Lines	-
	Vertical Total	T_V	1110	1125	1400	Lines	-
Horizontal Display Term	Active Display Period	T_{HD}	-	1920	-	Clocks	-
	Horizontal Total	T_H	2092	2200	2348	clocks	-

Note) This product is DE mode. But the Hsync & Vsync signal must be inputted

- (1) Test Point : TTL control signal and CLK at LVDS Tx input terminal in system
- (2) Internal VDD = 3.3V
- (3) Spread spectrum
 - Modulation rate (max) : $\pm 1.5\%$
 - Modulation Frequency : under 100KHz

5.2 LVDS Input Data Characteristics

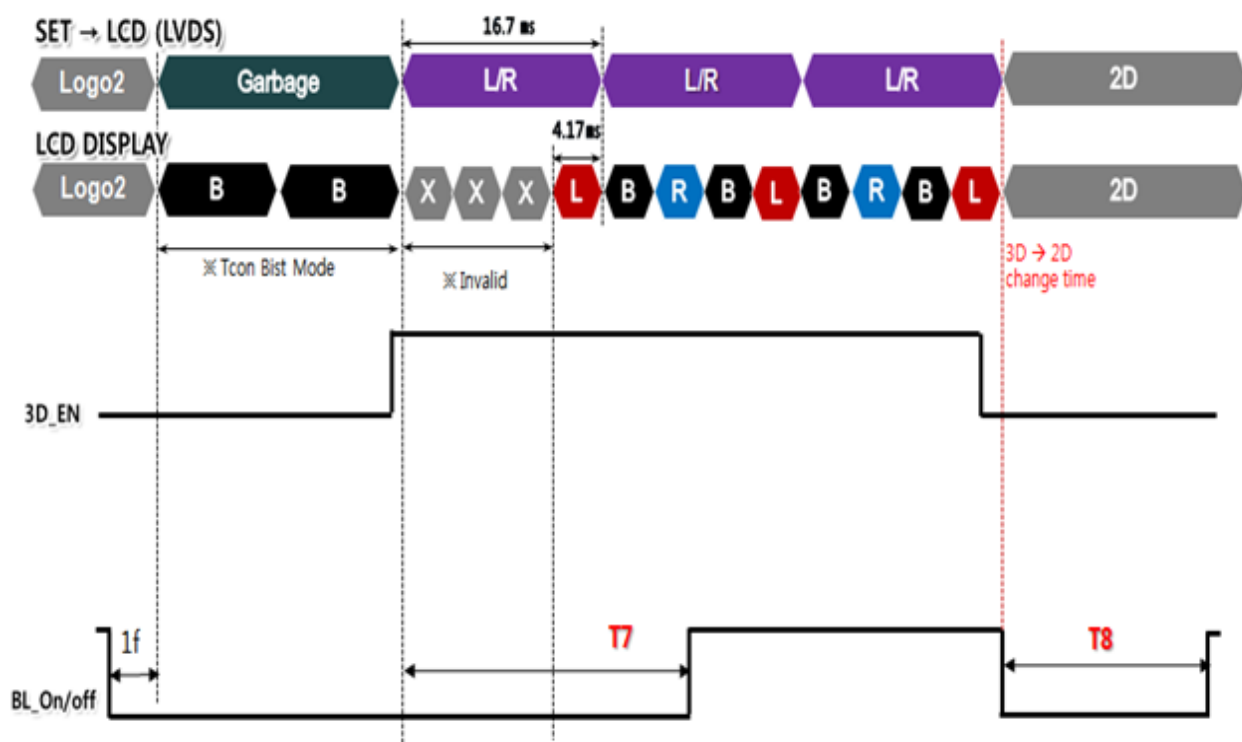
ITEM		SYMBOL	Min.	Typ.	Max.	UNIT	NOTE
Input Data Position	$F_{IN}=75\text{MHz}$	t_{RSM}	-	-	500	ps	
		t_{RSLM}	-500	-	-	Ps	
Input common mode voltage		V_{CM}	0.3	-	1.8	V	-
Differential Input Voltage		$ V_{ID} $	100	-	600	mV	-

Note) When the skew is measured the Spread Spectrum should be 0%

Samsung Secret

5.3 3D mode Sequence

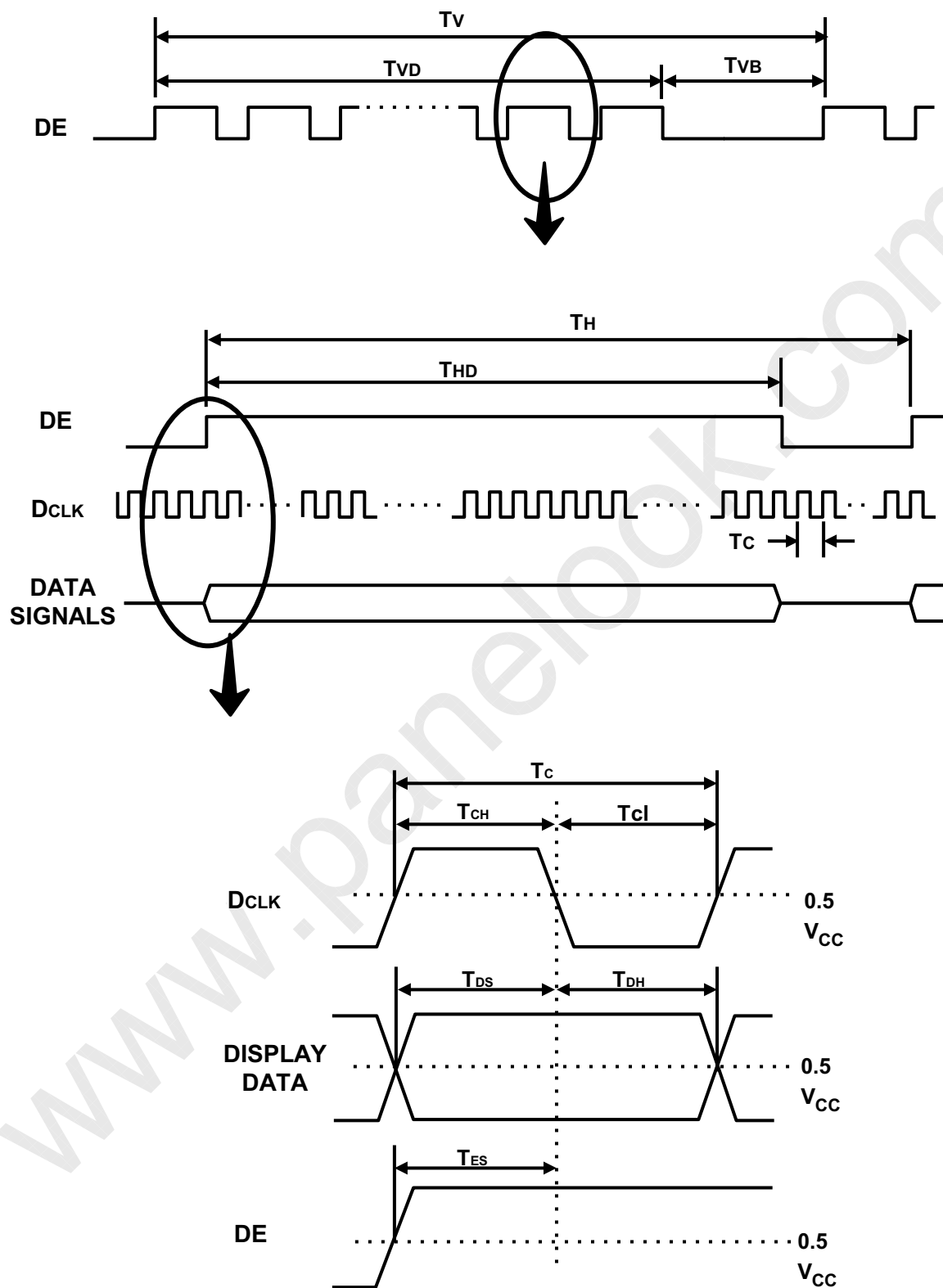
5.3.1 3D Sequence



Timing	Spec (ms)			Description
	Min.	Typ.	Max	
T7	≥ 42			Backlight should be on after 10 frame when 3D signal input from SET
T8	≥ 30			Backlight should be off after 7 frame when 3D signal change to 2D signal from SET

5.4 Timing diagrams of interface signal (DE mode)

Samsung Secret



MODEL

LTA460HQ18

Doc. No

06-002-G-20120224

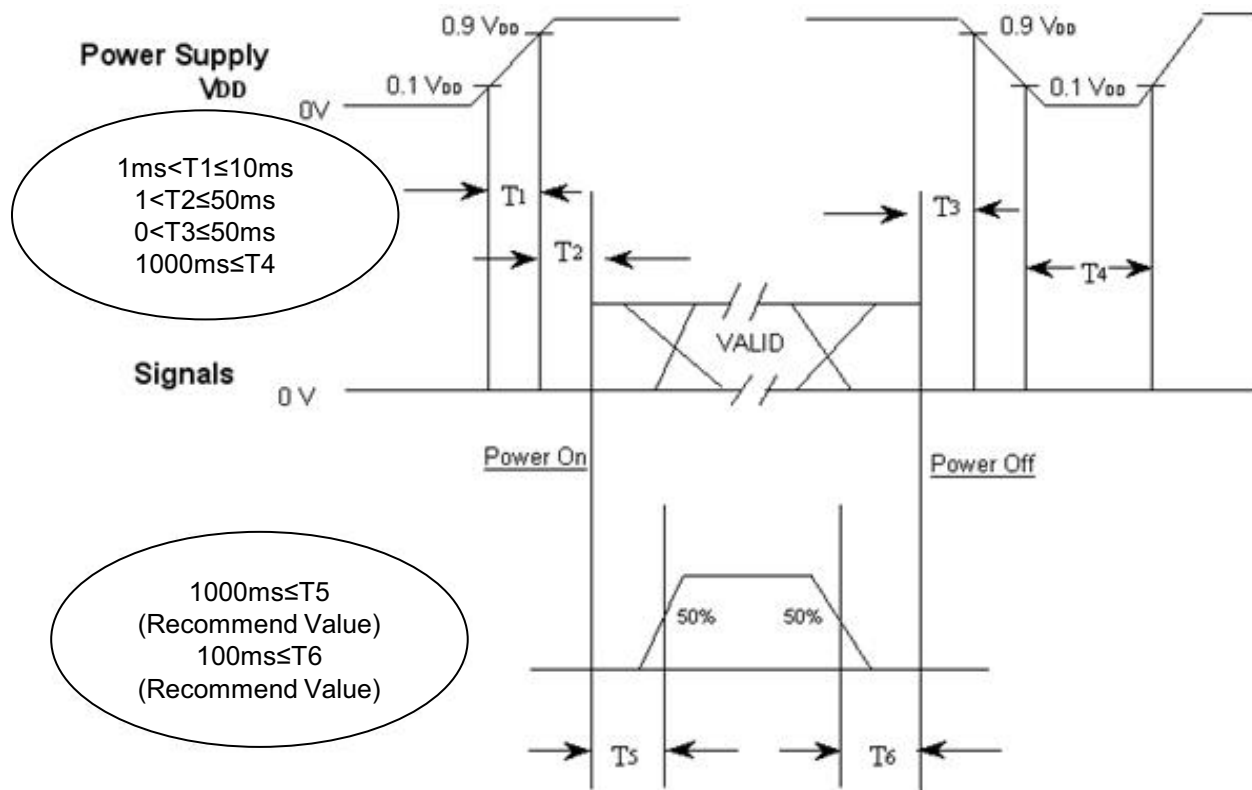
Page

18 / 26

5.5 Power ON/OFF Sequence

Samsung Secret

To prevent a latch-up or DC operation of the LCD Module, the power on/off sequence should be as the diagram below.



T1 : V_{DD} rising time from 10% to 90%

T2 : The time from V_{DD} to valid data at power ON.

T3 : The time from valid data off to V_{DD} off at power Off.

T4 : V_{DD} off time for Windows restart

T5 : The time from valid data to B/L enable at power ON.

T6 : The time from valid data off to B/L disable at power Off.

- The supply voltage of the external system for the Module input should be the same as the definition of V_{DD}.
- Apply the lamp voltage within the LCD operation range. When the back light turns on before the LCD operation or the LCD turns off before the back light turns off, the display may momentarily show abnormal screen.
- In case of V_{DD} = off level, please keep the level of input signals low or keep a high impedance.
- T4 should be measured after the Module has been fully discharged between power off and on period.
- Interface signal should not be kept at high impedance when the power is on.
- In Case T5 is less than 1000msec and T6 is less than 100msec, Garbage Display can be seen. (It is not related to electrical function issue, Just for recommendation to prevent Garbage Display)

MODEL

LTA460HQ18

Doc. No

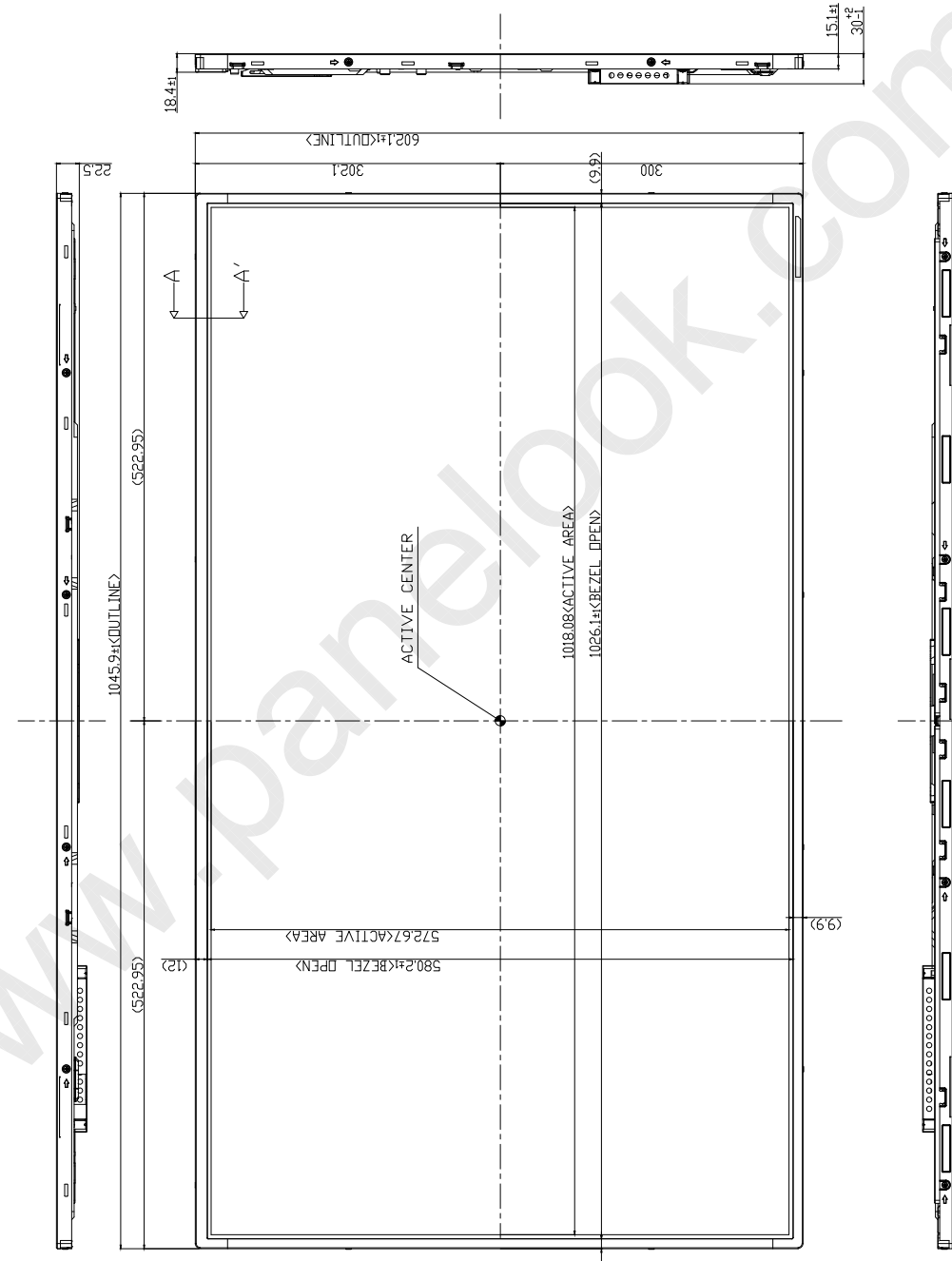
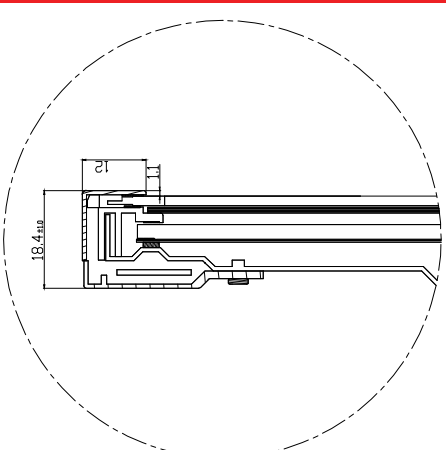
06-002-G-20120224

Page

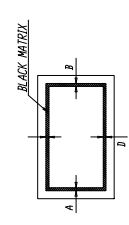
19 / 26

NO	PART NAME	CODE NO	SPECIFICATION	QTY	WEIGHT	WORKS IN	REMARK
	OUTLINE DIMENSION(DRAWN)		L1746G0R08-C				

SECTION AA'



- * NOTE
- 1. DRAWING UNIT: MM
 - 2. DIMENSIONAL SPECIFICATION
 - 3. POWER CONNECTOR
 - >MAKER: YEDNHD
 - >PART NO.: 800224P-481
 - >MATERIAL: COPPER
 - >PART NO.: FT-RE315-HF/FT-RE315-HF-J/ISD9-C51B-C3B
 - 3.1 USERHOLE
 - TAP SIZE & TOLERANCE DESIGNED FOR GENERAL PURPOSE
 - METRIC SCREW THREAD ACCORDING TO GENERAL PURPOSE
 - 02H1
 - ALL DIMD SCREW TORQUE
 - >M3 TAP: 8.0 kgf/cm MAX
 - >M4 TAP: 13.0 kgf/cm MAX
 - >M5 TAP: 18.0 kgf/cm MAX
 - 4. GAP BETWEEN TFP, CHASSIS AND GLASS IS 1.9mm(MAX).
 - 5. WEIGHT: 115g(MAX)
 - 6. BLACK MATRIX SPEC

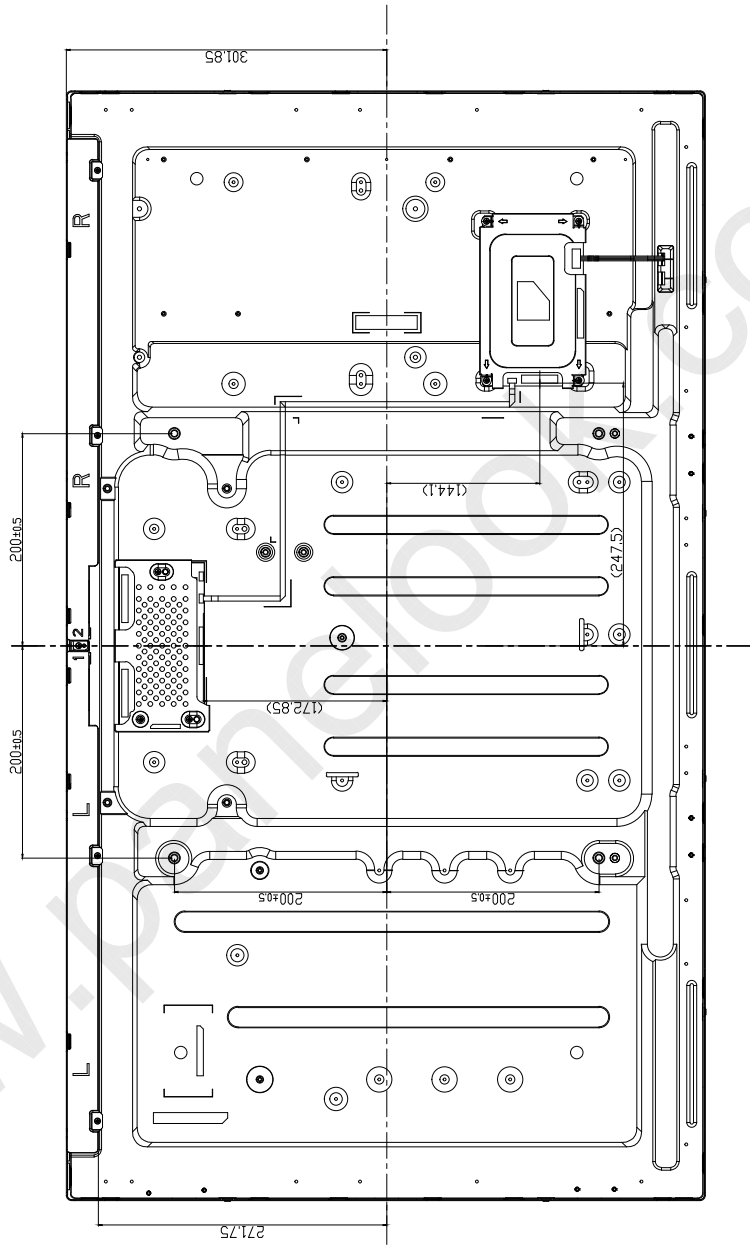


- |A - B| ≤ 20 mm
- |C - D| ≤ 20 mm

STEP	LEVEL 1	LEVEL 2	LEVEL 3	UNIT	REV	DATE	DESCRIPTION OF REVISION	CHKD BY
0	C X 4	#005	#01	#02			DRAWN BY: DESG BY: CHECK BY: APP'D BY:	L1746G0R08-C
4	C X 4	#6	#05	#03			SCALE: 1/1.5 LEVEL 2: 201.11.24 LEVEL 3:	REASON: L1746G0R08-C
16	C X 4	#64	#02	#05				MODEL NAME: L1746G0R08-C
64	C X 4	#256	#05	#08				PART/SHEET: OUTLINE DIMENSION(DRAWN)
								SHEET 1/2
								CODE NO.
								SPEC. NO.
								REV. 000

PRELIMINARY

A B C D E F G H I J K L M N O P
 NO. PART NAME CODE NO. SPECIFICATION QTY. WEIGHT DIMENSIONS REMARKS
 (OUTLINE DIMENSIONS) L17A60H08-C



GENERAL TOLERANCE		REV.	DATE	DESCRIPTION OF REVISION	CHKD BY
STEP	LEVEL 1	LEVEL 2	LEVEL 3	UNIT	MM
0 < X < 4	+0.05	+0.1	+0.2	SCALE	1:1
4 < X < 16	+0.08	+0.15	+0.3	DATE	2011.11.24
16 < X < 64	+0.12	+0.25	+0.5	DATE	2011.11.24
64 < X < 256	+0.25	+0.4	+0.8	DATE	2011.11.24

NO.	REV.	DATE	DESCRIPTION OF REVISION	CHKD BY
1	1	2011.11.24	INITIAL DRAWN BY	JAHAD
2	2	2011.11.24	REVISION	JAHAD

REASON	MODEL NAME	PART/SHEET NAME	OUTLINE DIMENSIONS	SHEET 12/2	REV. 000
L17A60H08-C	L17A60H08-C	L17A60H08-C	L17A60H08-C	L17A60H08-C	L17A60H08-C

STEP	LEVEL 1	LEVEL 2	LEVEL 3	UNIT	MM
0 < X < 4	+0.05	+0.1	+0.2	SCALE	1:1
4 < X < 16	+0.08	+0.15	+0.3	DATE	2011.11.24
16 < X < 64	+0.12	+0.25	+0.5	DATE	2011.11.24
64 < X < 256	+0.25	+0.4	+0.8	DATE	2011.11.24

NO.	REV.	DATE	DESCRIPTION OF REVISION	CHKD BY
1	1	2011.11.24	INITIAL DRAWN BY	JAHAD
2	2	2011.11.24	REVISION	JAHAD

REASON	MODEL NAME	PART/SHEET NAME	OUTLINE DIMENSIONS	SHEET 12/2	REV. 000
L17A60H08-C	L17A60H08-C	L17A60H08-C	L17A60H08-C	L17A60H08-C	L17A60H08-C

PRELIMINARY

Samsung Secret

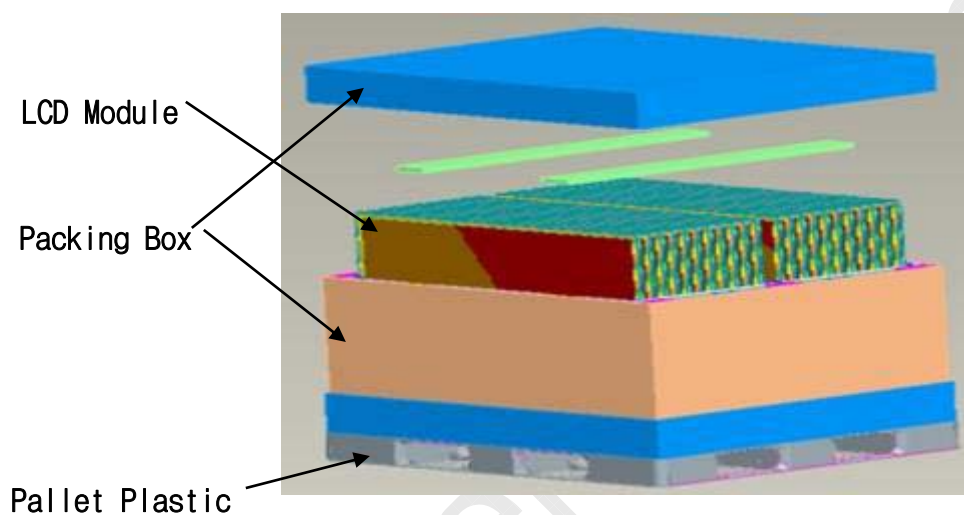
7. PACKING

7.1 CARTON (Internal Package)

(1) Packing Form

Corrugated fiberboard box and EPS cushion as shock absorber

(2) Packing Method



7.2 Packing Specification

Item	Specification	Remark
LCD Packing	24ea / Box	1. 259.2 Kg/ LCD (24ea) 2. 12Kg/ Cushion pallet (2ea) 3. 8 Kg / Packing pallet box (1ea)
Pallet	1Box / Pallet	1. Pallet weight : 8.8Kg
Packing Direction	Vertical	
Total Pallet Size	H x V x height	1270mm(H) x 1150mm(V) x 844mm (height)
Total Pallet Weight	288Kg	Pallet + Module + Cushion + Pallet box

MODEL

LTA460HQ18

Doc. No

06-002-G-20120224

Page

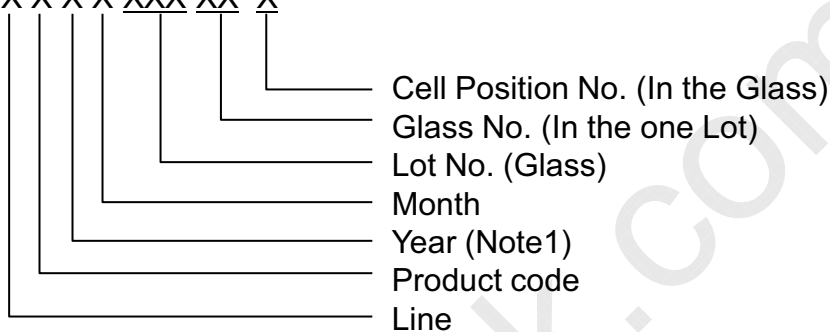
22 / 26

Samsung Secret

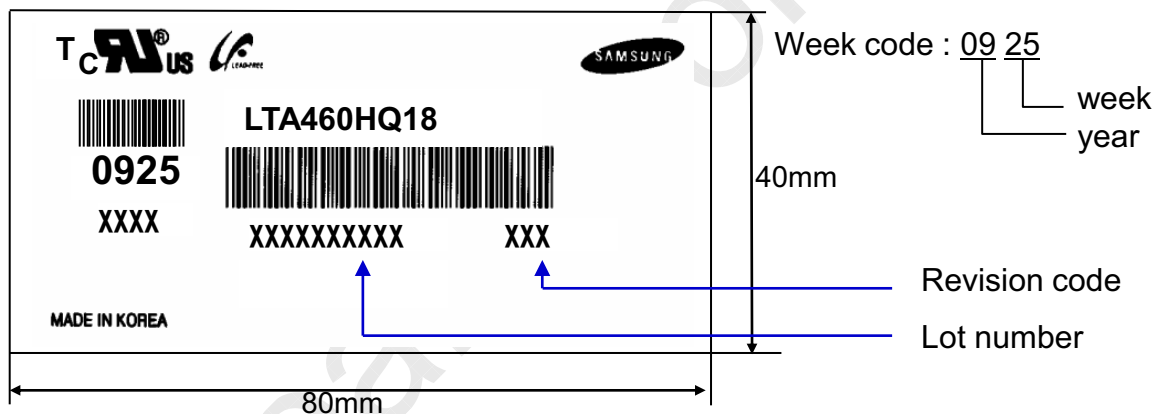
8. MARKING & OTHERS

A nameplate bearing followed by is affixed to a shipped product at the specified location on each product.

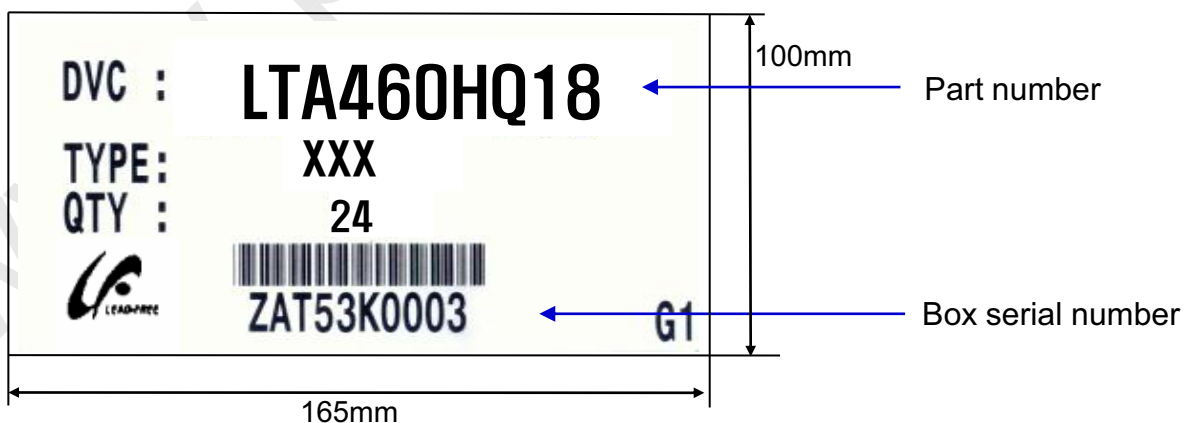
- (1) Part number : LTA460HQ18
- (2) Revision: Three letters
- (3) Lot number : X X X X XXX XX X



(4) Nameplate Indication



(5) Packing box attach



(6) Others

- 1. After service part
 Lamps cannot be replaced because of the narrow bezel structure.

MODEL	LTA460HQ18	Doc. No	06-002-G-20120224	Page	23 / 26
-------	------------	---------	-------------------	------	---------

9. General Precautions

Samsung Secret

9.1 Handling

- (a) When the Module is assembled, it should be attached to the system firmly using all mounting holes. Be careful not to twist and bend the Module.
- (b) Because the converter use high voltage, it should be disconnected from power before it is assembled or disassembled.
- (c) Refrain from strong mechanical shock and / or any force to the Module.
In addition to damage, this may cause improper operation or damage to the Module and LED back light.
- (d) Note that polarizers are very fragile and could be damage easily.
Do not press or scratch the surface harder than a HB pencil lead.
- (e) Wipe off water droplets or oil immediately. If you leave the droplets for a long time, staining or discoloration may occur.
- (f) If the surface of the polarizer is dirty, clean it using absorbent cotton or soft cloth.
- (g) Desirable cleaners are water, IPA(Isopropyl Alcohol) or Hexane.
Do not use Ketone type materials(ex. Acetone), Ethyl alcohol, Toluene, Ethyl acid or Methyl chloride. It might permanent damage to the polarizer due to chemical reaction.
- (h) If the liquid crystal material leaks from the panel, it should be kept away from the eyes or mouth . In case of contact with hands, legs or clothes, it must be washed away with soap thoroughly.
- (i) Protect the module from Electrostatic discharge. Otherwise the ASIC IC or semiconductor would be damaged.
- (j) Use finger-stalls with soft gloves in order to keep display clean during the incoming inspection and assembly process.
- (k) Do not disassemble the Module.
- (l) Do not disassemble shield case of converter & LVDS board
- (m) Do not connect N.C pins. (Samsung internal use only)
- (n) Protection film for polarizer on the Module should be slowly peeled off just before use so that the electrostatic charge can be minimized. Must put on antistatic glove while handling a module
- (o) Pins of I/F connector should not be touched directly with bare hands.

MODEL

LTA460HQ18

Doc. No

06-002-G-20120224

Page

24 / 26

Samsung Secret

9.2 Storage

ITEM	UNIT	Min.	Max.
Storage Temperature	(°C)	5	40
Storage Humidity	(%rH)	35	75
Storage Life	12 months		
Storage Condition	<ul style="list-style-type: none"> - The storage room should provide good ventilation and temperature control. - Products should not be placed on the floor, but on the Pallet away from a wall. - Prevent products from direct sunlight, moisture nor water; Be cautious of a build up of condensation. - Avoid other hazardous environment while storing goods. - If products delivered or kept in conditions of over the storage period of 3months, the recommended temperature or humidity range, we recommend you leave them at a temperature of 20 °C and a humidity of 50% for 24 hours. 		

9.3 Operation

- (a) Do not connect or disconnect the Module in the "Power On" condition.
- (b) Power supply should always be turned on/off by the "Power on/off sequence"
- (c) Module has high frequency circuits. Sufficient suppression to the electromagnetic interference should be done by system manufacturers. Grounding and shielding methods may be important to minimize the interference.
- (d) The cable between the back light connector and its converter power supply should be connected directly with a minimized length. A longer cable between the back light and the converter may cause lower luminance of LED package and may require higher startup voltage(Vs).

MODEL

LTA460HQ18

Doc. No

06-002-G-20120224

Page

25 / 26

Samsung Secret

9.4 Operation Condition Guide

- (a) The LCD product should be operated under normal conditions.
Normal condition is defined as below;
- Temperature : $20 \pm 15^{\circ}\text{C}$
 - Humidity : $55 \pm 20\%$
 - Display pattern : continually changing pattern (Not stationary)
- (b) If the product will be used in extreme conditions such as high temperature, humidity, display patterns or operation time etc., It is strongly recommended to contact SEC for Application engineering advice. Otherwise, its reliability and function may not be guaranteed. Extreme conditions are commonly found at Airports, Transit Stations, Banks, Stock market, and Controlling systems.

9.5 Others

- (a) Ultra-violet ray filter is necessary for outdoor operation.
- (b) Avoid condensation of water. It may result in improper operation or disconnection of electrode.
- (c) Do not exceed the absolute maximum rating value. (supply voltage variation, input voltage variation, variation in part contents and environmental temperature, and so on)
Otherwise the Module may be damaged.
- (d) If the Module keeps displaying the same pattern for a long period of time, the image may be "sticked" to the screen.
To avoid image sticking, it is recommended to use a screen saver.
- (e) This Module has its circuitry PCB's on the rear side and should be handled carefully in order not to be stressed.
- (f) Please contact SEC in advance when you display the same pattern for a long time.

MODEL

LTA460HQ18

Doc. No

06-002-G-20120224

Page

26 / 26