

**Samsung Secret**

Product Information

Customer :**DATE : 8. June. 2011****SAMSUNG TFT-LCD****MODEL : LTA550HQ16**

The Information Described in this Specification is Preliminary and can be changed without prior notice

LCD Business

Samsung Electronics Co . , LTD.

MODEL

LTA550HQ16

Doc. No

06-000-G-20110608

Page

1 / 28

Contents**Samsung Secret**

Revision History	-----	(3)
General Description	-----	(4)
General Information	-----	(4)
1. Absolute Maximum Ratings	-----	(5)
2. Optical Characteristics	-----	(6)
3. Electrical Characteristics	-----	(9)
3.1 TFT LCD Module		
3.2 Back Light Unit		
3.3 Inverter Input & Specification		
4. Input Terminal Pin Assignment	-----	(12)
4.1 Input Signal & Power		
4.2 Converter Input Pin Configuration		
4.3 Converter Input Power Sequence		
4.4 LVDS Interface		
4.5 Input Signals, Basic Display Colors and Gray Scale of Each Color		
5. Interface Timing	-----	(18)
5.1 Timing Parameters (DE only mode)		
5.2 LVDS Input data Characteristics		
5.3 3D mode Sequence		
5.4 Timing Diagrams of interface Signal (DE only mode)		
5.5 Power ON/OFF Sequence		
6. Outline Dimension	-----	(22)
7. Packing	-----	(24)
8. Marking & Others	-----	(25)
9. General Precaution	-----	(26)
9.1 Handling		
9.2 Storage		
9.3 Operation		
9.4 Operation Condition Guide		
9.5 Others		

MODEL

LTA550HQ16

Doc. No

06-000-G-20110608

Page

2 / 28

Samsung Secret**Revision History**

Date	Rev. No	Page	Summary
31. May. 2011	000	all	First issued
8.June. 2011	001	22,23page	Add 2D drawing

MODEL

LTA550HQ16

Doc. No

06-000-G-20110608

Page

3 / 28

General Description

Samsung Secret

Description

LTA550HQ16 is a color active matrix liquid crystal display (LCD) that uses amorphous silicon TFT(Thin Film Transistor) as switching components. This model is composed of a TFT LCD panel, a driver circuit and a back light unit. The resolution of a 55.0" is 1920 x 1080 and this model can display up to 16.7 Million colors with wide viewing angle of 89° or higher in all directions. This panel is intended to support applications to provide a excellent performance for Flat Panel Display such as Home-alone Multimedia TFT-LCD TV and High Definition TV

Features

- RoHS compliance (Pb-free)
- High contrast ratio & aperture ratio with wide color gamut
- SPVA(Super Patterned Vertical Align) mode
- Wide viewing angle ($\pm 178^\circ$)
- High speed response (& Natural Motion (DFR: Double Frame Rate))
- FHD resolution (16:9)
- Low Power consumption
- Edge Type LED (Light Emitted Diode) BLU
- DE (Data Enable) mode
- 4ch LVDS (Low Voltage Differential Signaling) interface (4pixel/clock)

General Information

Items	Specification	Unit	Note
Module Size	1237.4 (W) X 711.3 (V)	mm	$\pm 1.0\text{mm}$
	32.8 (D) (Max)		
Weight	TBD	Kg	
Pixel Pitch	0.630(H) x 0.630(W)	mm	
Active Display Area	1209.6(H) X 680.4(V)	mm	
Surface Treatment	Antiglare		
Display Colors	8 bit – 16.7 Million	colors	
Number of Pixels	1920 x 1080	pixel	
Pixel Arrangement	RGB vertical stripe		
Display Mode	Normally Black		
Luminance of White	400 (Typ.)	cd/m ²	

MODEL

LTA550HQ16

Doc. No

06-000-G-20110608

Page

4 / 28

Samsung Secret

1. Absolute Maximum Ratings

If the condition exceeds maximum ratings, it can cause malfunction or unrecoverable damage to the device.

Item	Symbol	Min.	Max.	Unit	Note
Power Supply Voltage	V_{DD}	GND-0.3	13.2	V	(1)
Dimming Control	Max. Lum	-	5	V	
Storage temperature	T_{STG}	-20	60	°C	(2)
Operating temperature	T_{OPR}	0	50	°C	
Surface temperature	T_{SUR}	0	60	°C	(3)
Shock (non - operating)	X,Y,Z	-	30	G	(4)
Vibration (non - operating)	V_{NOP}	-	1.5	G	(5)

Note (1) $T_a = 25 \pm 2 \text{ }^\circ\text{C}$

(2) Temperature and relative humidity range are shown in the figure below.

a. 90 % RH Max. ($T_a \leq 39 \text{ }^\circ\text{C}$)

b. Relative Humidity is 90% or less. ($T_a > 39 \text{ }^\circ\text{C}$)

c. No condensation

(3) Although abnormal visual problems can be occurred in T_{SUR} range, the polarizer is not damaged in this range.

(4) 11ms, sine wave, one time for $\pm X, \pm Y, \pm Z$ axis

(5) 10-300 Hz, Sweep rate 10min, 30min for X,Y,Z axis

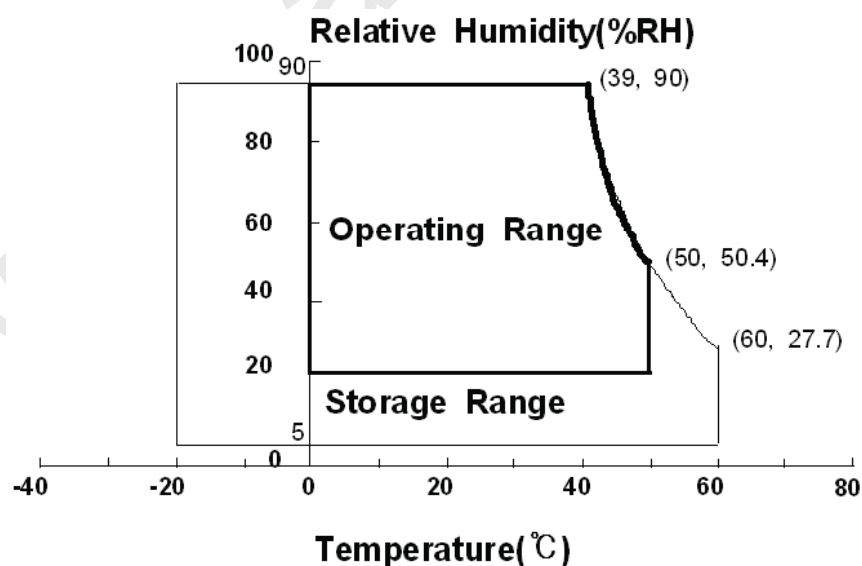


Fig. Temperature and Relative humidity range

MODEL

LTA550HQ16

Doc. No

06-000-G-20110608

Page

5 / 28

2. Optical Characteristics

Samsung Secret

The optical characteristics should be measured in a dark room or equivalent.

Measuring equipment : TOPCON RD-80S, TOPCON SR-3, ELDIM EZ-Contrast

($T_a = 25 \pm 2^\circ\text{C}$, $V_{DD}=12\text{V}$, $f_v=120\text{Hz}$, $f_{DCLK}=297\text{MHz}$, LED Current = 140 mA)

Item	Symbol	Condition	Min.	Typ.	Max.	Unit	Note	
Contrast Ratio (Center of screen)	C/R		3000	4000	-		(1) SR-3	
Response Time	G-to-G	Tg	-	6	-	msec	(3) RD-80S	
Luminance of White (Center of screen)	Y_L		350	400	-	cd/m ²	(4) SR-3	
Color Chromaticity (CIE 1931)	Red	Rx	Normal $q_{L,R}=0$ $q_{U,D}=0$ Viewing Angle	0.646	TYP. -0.03	TYP. +0.03	(5),(6) SR-3	
		Ry		0.333				
	Green	Gx		0.311				
		Gy		0.610				
	Blue	Bx		0.154				
		By		0.053				
	White	Wx		0.280				
		Wy		0.290				
Color Gamut	-		-	72	-	%	(5) SR-3	
Color Temperature	-		-	10,000	-	K		
Viewing Angle	Hor.	q_L	C/R \geq 10	75	89	-	Degree	(6) EZ-Contrast
		q_R		75	89	-		
	Ver.	q_U		75	89	-		
		q_D		75	89	-		
White Brightness Uniformity (9 Points)	B_{uni}		-	-	30	%	(2) SR-3	

- Test Equipment Setup

The measurement should be executed in a stable, windless and dark room between 40min and 60min after lighting the back light at the given temperature for stabilization of the back light. This should be measured in the center of screen.

Environment condition : $T_a = 25 \pm 2^\circ\text{C}$

MODEL

LTA550HQ16

Doc. No

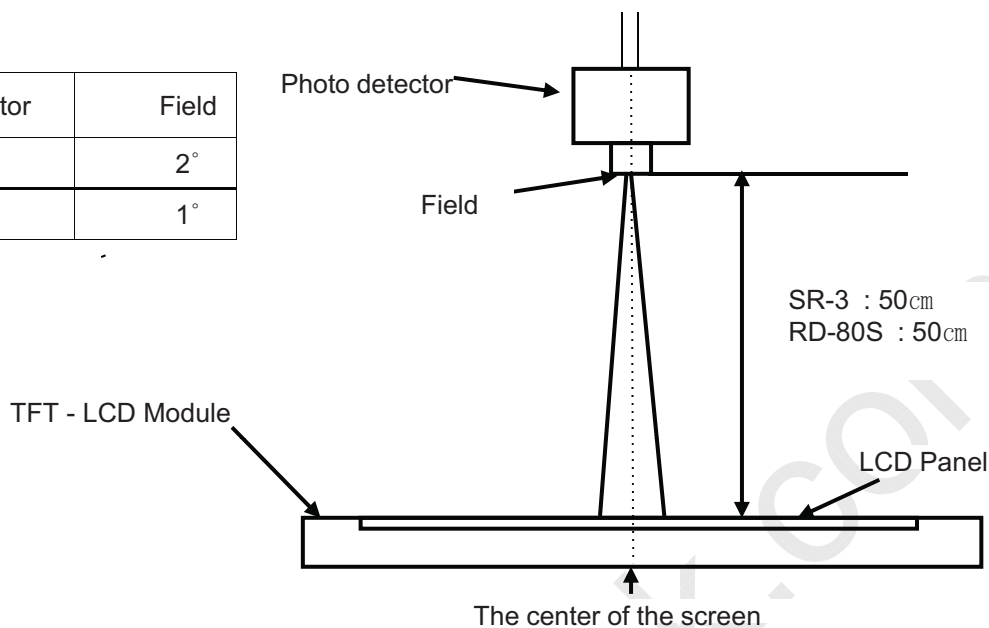
06-000-G-20110608

Page

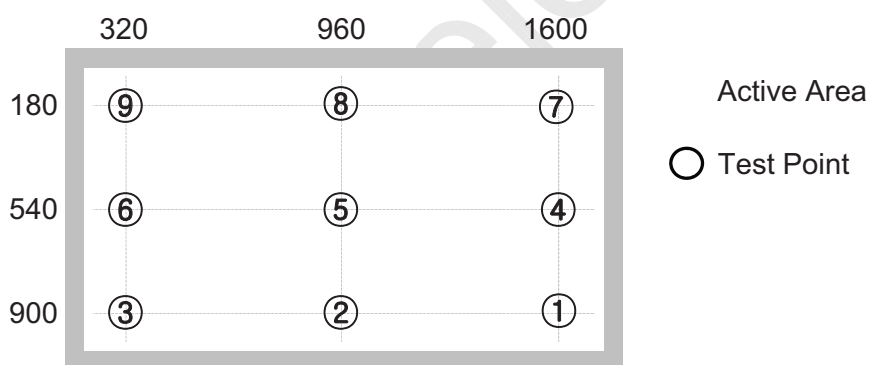
6 / 28

Samsung Secret

Photo detector	Field
SR-3	2°
RD-80S	1°



- Definition of test point



Note (1) Definition of Contrast Ratio (C/R)

: Ratio of gray max (Gmax) & gray min (Gmin) at the center point ⑤ of the panel

$$C/R = \frac{G_{max}}{G_{min}}$$

Gmax : Luminance with all pixels white

Gmin : Luminance with all pixels black

MODEL

LTA550HQ16

Doc. No

06-000-G-20110608

Page

7 / 28

Samsung Secret

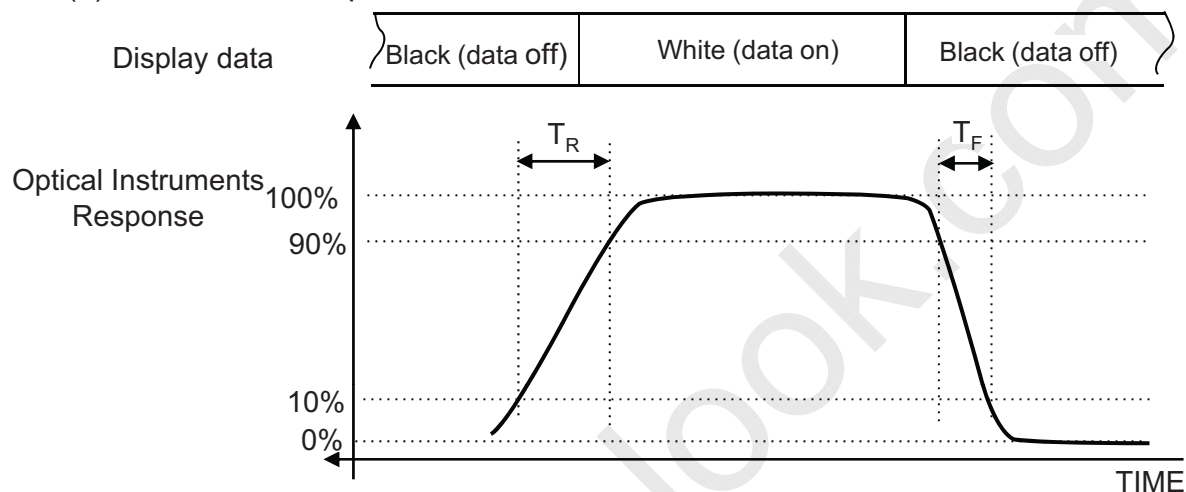
Note (2) Definition of 9 points brightness uniformity (Test pattern : Full White)

$$B_{uni} = 100 * \frac{(B_{max} - B_{min})}{B_{max}}$$

Bmax : Maximum brightness

Bmin : Minimum brightness

Note (3) Definition of Response time : Sum of Tr, Tf



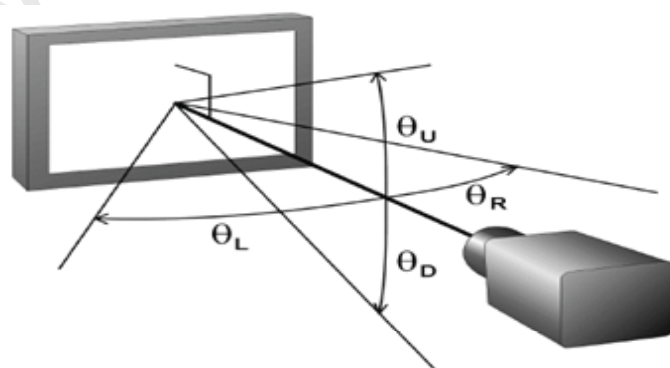
Note (4) Definition of Luminance of White : Luminance of white at center point ⑤

Note (5) Definition of Color Chromaticity (CIE 1931)

Color coordinate of Red, Green, Blue & White at center point ⑤

Note (6) Definition of Viewing Angle

: Viewing angle range (C/R ≥ 10)



MODEL

LTA550HQ16

Doc. No

06-000-G-20110608

Page

8 / 28

Samsung Secret

3. Electrical Characteristics

3.1 TFT LCD Module

The connector for display data & timing signal should be connected.

$T_a = 25^\circ\text{C} \pm 2^\circ\text{C}$

Item	Symbol	Min.	Typ.	Max.	Unit	Note
Voltage of Power Supply	V_{DD}	10.8	12.0	13.2	V	(1)
Current of Power Supply	(a) Black	-	TBD	TBD	mA	(2),(3)
	(b) White	-	TBD	TBD	mA	
	(c) H-STRIPE	-	TBD	TBD	mA	
Power consumption (Control)	P_c	-	-	TBD	Watt	
Vsync Frequency	f_V	95	120.0	125	Hz	
Hsync Frequency	f_H	120	135.0	140	kHz	
Main Frequency	f_{DCLK}	260	297.0	305	MHz	
Rush Current	I_{RUSH}	-	6	8	A	(4)

Note (1) The ripple voltage should be controlled under 10% of V_{DD} .

(2) $f_V=120\text{Hz}$, $f_{DCLK} = 297.0\text{MHz}$, $V_{DD} = 12.0\text{V}$, DC Current.

(3) Power dissipation check pattern (LCD Module only)

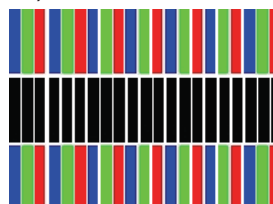
a) Black Pattern



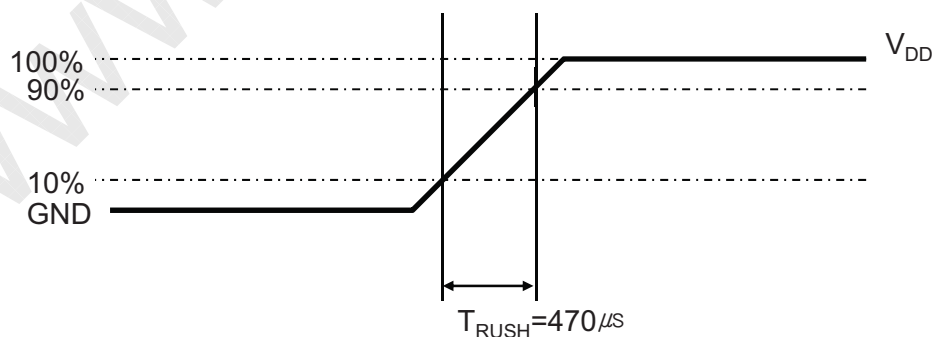
b) White Pattern



c) H-STRIPE



(4) Measurement Conditions



Rush Current I_{RUSH} can be measured when T_{RUSH} is $470\mu\text{s}$.

MODEL

LTA550HQ16

Doc. No

06-000-G-20110608

Page

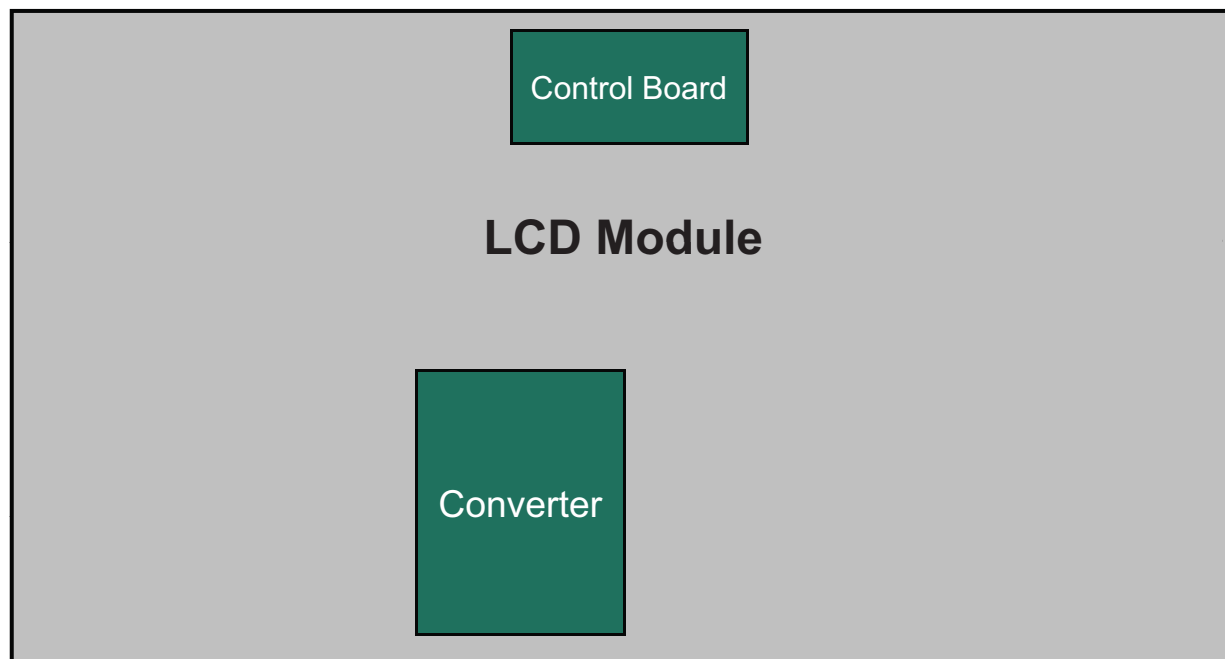
9 / 28

Samsung Secret

3.2 Back Light Unit

The back light unit contains Edge type White LEDs (Light Emitting Diode)

$T_a = 25 \pm 2^\circ\text{C}$



Item	Symbol	Min.	Typ.	Max.	Unit	Note
Operating Life Time	Hr	30,000	-	-	Hour	(1)

Note (1) It is defined as the time to take until the brightness reduces to 50% of its original value.

[Operating condition : $T_a = 25 \pm 2^\circ\text{C}$, For single lamp only.]

MODEL

LTA550HQ16

Doc. No

06-000-G-20110608

Page

10 / 28

3.3 Converter Input Condition & Specification

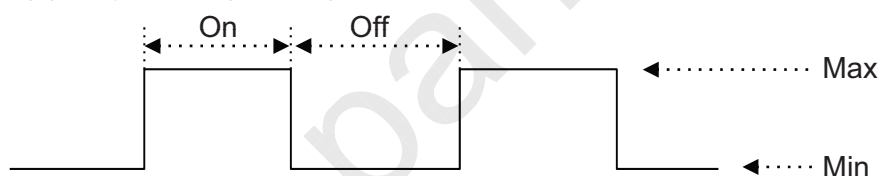
Samsung Secret

Items	Symbol	Conditions	Specifications			Unit	Note
			Min.	Typ.	Max.		
Input Voltage	V _{in}	-	22	24	26	V	Ta=25±2 °C
Input Current	I _{RUSH}	V _{in} =24.0V V _{dim} =3.3V	-	-	7.5	A	
Output Current	I _{O (2D)}	V _{in} = 24.0V V _{dim} =3.3 V	133	140	147	mA	Note (1)
	I _{O (3D)}	3D ENA = ON	218.5	230	241.5		
Backlight On/Off	ON	V _{in} =24.0 V	2.4	-	5.5	V	
	OFF	V _{in} =24.0 V	0	-	0.8		
Dimming Range	V _{DIM}	V _{in} :22~26V	0	-	3.3	V	Note(2)
Dimming Duty Output	D max	V _{in} =24V Dim:3.3V	100	-	-	%	
	D min	V _{in} =24V Dim:0V	1	-	-		
Dimming Frequency	F _{PWM}	V _{in} =24.0 V	140	150	160	Hz	
External Dimming Duty Range	EX_Dim	V _{in} =22.0~26.0 V Dim Pin(#13):floating	1	-	100	%	
External Dimming Frequency Range	F _{EX_PWM}		95	-	200	Hz	
External Dimming Signal Level	V _{PWM}	High (ON)	2.4	-	5.5	V	
		Low (Off)	0	-	0.8		

Note (1) All data is measured after 120min warm-up.

Note (2) V_{Dim} and Ex_Dim are available only at Normal 2D mode. (3D ENA = OFF)

Note (3) Duty = On / (On+Off) * 100



- Additional Appendix for Supply Current (Only for Reference_2D mode)

Items	Symbol	Conditions	Min.	Typ.	Max.	Unit
Input Current	lin_overshoot	V _{in} = 24V, Dim=3.3V (Within 1hr at BLU on)	-	4.0	4.1	A
	lin_saturation	V _{in} = 24V, Dim=3.3V (After 1hr Aging)	-	3.9	4.0	A
Power Consumption (Back light)	P_Inrush	V _{in} =24.0V, V _{dim} = 3.3V	-	-	180	Watt
	P_overshoot	V _{in} = 24V, Dim=3.3V (Within 1hr at BLU on)	-	96	98.4	Watt
	P_saturation	V _{in} = 24V, Dim=3.3V (After 1hr Aging)	-	93.6	96	Watt

MODEL

LTA550HQ16

Doc. No

06-000-G-20110608

Page

11 / 28

4. Input Terminal Pin Assignment

Samsung Secret

4.1.1 Input Signal & Power

Connector : FI-RE41S-HF (JAE/UJU)

Pin	Description		Pin	Symbol	Description
1	Vdd(12V)		21	ODD LVDS SIGNAL	Rx1[3]P
2	Vdd(12V)		22		No Connection
3	Vdd(12V)		23		No Connection
4	Vdd(12V)		24		GND
5	Vdd(12V)		25		Rx3[0]N
6	No Connection		26		Rx3[0]P
7	GND		27		Rx3[1]N
8	GND		28		Rx3[1]P
9	GND		29		Rx3[2]N
10	ODD LVDS SIGNAL	Rx1[0]N	30		Rx3[2]P
11		Rx1[0]P	31		GND
12		Rx1[1]N	32		Rx3CLK-
13		Rx1[1]P	33		Rx3CLK+
14		Rx1[2]N	34		GND
15		Rx1[2]P	35		Rx3[3]N
16		GND	36		Rx3[3]P
17		Rx1CLK-	37		No Connection
18		Rx1CLK+	38		No Connection
19		GND	39		GND
20	Rx1[3]N	40	No Connection		
			41	No Connection	

Note) No Connection : This PINS Should be disconnected because of SEC internal design.

MODEL

LTA550HQ16

Doc. No

06-000-G-20110608

Page

12 / 28

Samsung Secret

4.1.2 Input Signal & Power

Connector : FI-RE51S-HF (JAE/UJU)

Pin	Description	Pin	Description	
1	Vdd(12V)	26	Rx4[0]P	
2	Vdd(12V)	27	Rx4[1]N	
3	Vdd(12V)	28	Rx4[1]P	
4	Vdd(12V)	29	Rx4[2]N	
5	Vdd(12V)	30	Rx4[2]P	
6	No Connection	31	GND	
7	GND	32	Rx4CLK-	
8	GND	33	Rx4CLK+	
9	GND	34	GND	
10	Rx2[0]N	35	Rx4[3]N	
11	Rx2[0]P	36	Rx4[3]P	
12	Rx2[1]N	37	No Connection	
13	Rx2[1]P	38	No Connection	
14	Rx2[2]N	39	GND	
15	Rx2[2]P	40	No Connection	
16	GND	41	No Connection	
17	Rx2CLK-	42	3D_EM	3D_EN signal (Note 2)
18	Rx2CLK+	43	No Connection	
19	GND	44	No Connection	
20	Rx2[3]N	45	No Connection	
21	Rx2[3]P	46	No Connection	
22	No Connection	47	No Connection	
23	No Connection	48	3D_SYNC_I	Shutter glass Sync Input signal (Note 2) (Note 3)
24	GND	49	3D_SYNC_O	Shutter glass Sync Signal
25	Rx4[0]N	50	No Connection	
		51	No Connection	

Note) No Connection : This PINS Should be disconnected because of SEC internal design.

Note (1) SEC internal Only: These PINS are used only for SAMSUNG. (DO NOT CONNECT)

Note (2) 3D Enable / 3D sync_I signal voltage level

High : Min 2.7 V, Max 3.3 V Low : Min 0 V, Max 0.4V

MODEL

LTA550HQ16

Doc. No

06-000-G-20110608

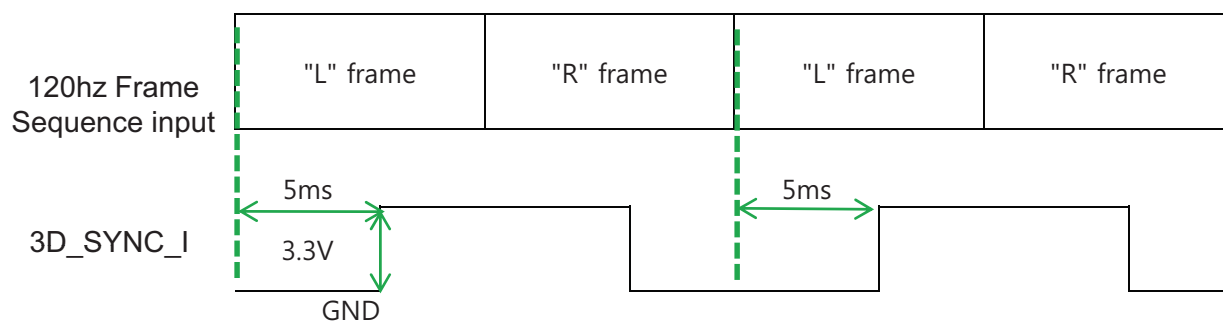
Page

13 / 28

Samsung Secret

Note3) Recommend timing for 3D_SYNC_I Signal .

- Guide Signal to Separate L frame and R frame
- Shutter glass signal & Operation timing also depend on this signal
- To operate 3D function, need this signal from Set A/D board.
(In Order for using it in 2D mode, change the input condition into GND)



Note4) Pin number starts from Right side

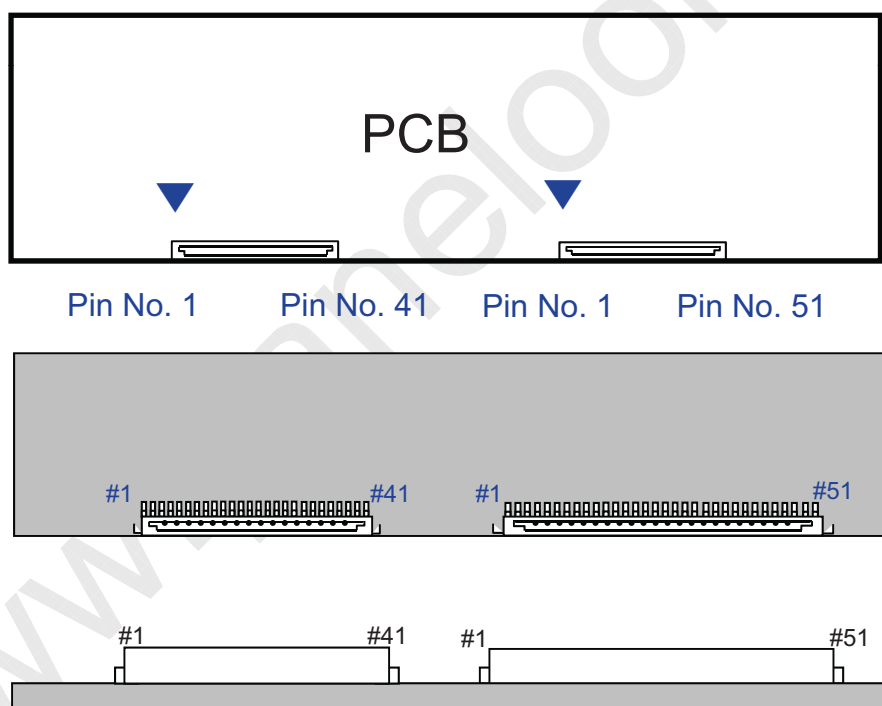


Fig. Connector diagram

- All GND pins should be connected together and also be connected to the LCD's metal chassis.
- All power input pins should be connected together.
- All NC pins should be separated from other signal or power.

MODEL

LTA550HQ16

Doc. No

06-000-G-20110608

Page

14 / 28

4.2. Converter Input Pin Configuration

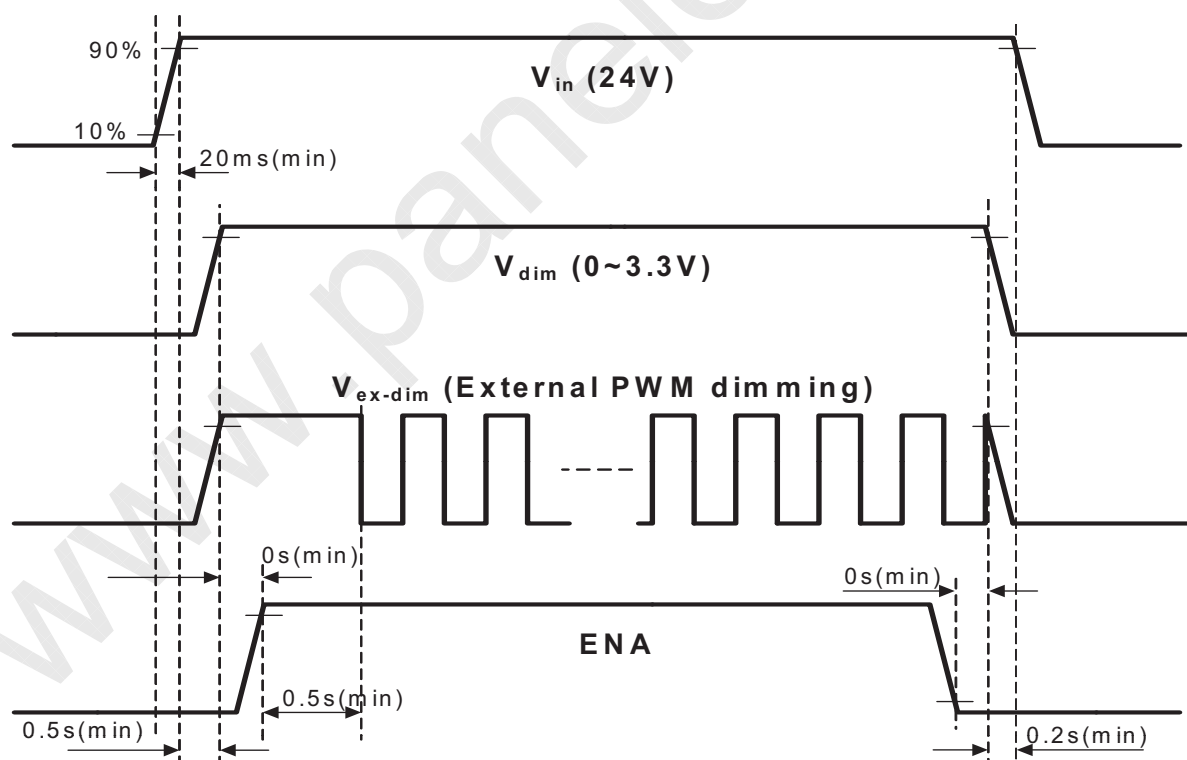
Samsung Secret

Connector : Yeon-ho, 20022WR-14B1

Pin No.	Pin Configuration(FUNCTION)
	Master
1 ~5	24 V
6~10	GND
11	Error Out
12	Backlight On /Off [ON:2.4 – 5.5 V, OFF: 0 - 0.8 V]
13	Dimming Control [0V:Min, 3.3V:Max] *Note(1)
14	External PWM [1~100 %] *Note(1)

Note(1) If use Dimming Control, Pin 14 Must be N.C
If use External PWM, Pin 13 Must be N.C

4.3. Converter Input Power Sequence



Note) SEQUENCE : ON = $V_{in}(24V) > \text{Dimming Control} \geq \text{Backlight On/Off}$
OFF = $\text{Backlight On/Off} \geq \text{Dimming Control} > V_{in}(24V)$

MODEL

LTA550HQ16

Doc. No

06-000-G-20110608

Page

15 / 28

4.4 LVDS Interface

Samsung Secret

- LVDS Receiver : T-con (merged)
- Data Format (JEIDA Only)

	LVDS pin	JEIDA -DATA
TxOUT/RxIN0	TxIN/RxOUT0	R2
	TxIN/RxOUT1	R3
	TxIN/RxOUT2	R4
	TxIN/RxOUT3	R5
	TxIN/RxOUT4	R6
	TxIN/RxOUT6	R7
	TxIN/RxOUT7	G2
TxOUT/RxIN1	TxIN/RxOUT8	G3
	TxIN/RxOUT9	G4
	TxIN/RxOUT12	G5
	TxIN/RxOUT13	G6
	TxIN/RxOUT14	G7
	TxIN/RxOUT15	B2
	TxIN/RxOUT18	B3
TxOUT/RxIN2	TxIN/RxOUT19	B4
	TxIN/RxOUT20	B5
	TxIN/RxOUT21	B6
	TxIN/RxOUT22	B7
	TxIN/RxOUT24	HSYNC
	TxIN/RxOUT25	VSYNC
	TxIN/RxOUT26	DEN
TxOUT/RxIN3	TxIN/RxOUT27	R0
	TxIN/RxOUT5	R1
	TxIN/RxOUT10	G0
	TxIN/RxOUT11	G1
	TxIN/RxOUT16	B0
	TxIN/RxOUT17	B1
	TxIN/RxOUT23	RESERVED

MODEL

LTA550HQ16

Doc. No

06-000-G-20110608

Page

16 / 28

Samsung Secret

4.5 Input Signals, Basic Display Colors and Gray Scale of Each Color

COLOR	DISPLAY (8bit)	DATA SIGNAL																												GRAY SCALE LEVEL
		RED							GREEN							BLUE														
		R0	R1	R2	R3	R4	R5	R6	R7	G0	G1	G2	G3	G4	G5	G6	G7	B0	B1	B2	B3	B4	B5	B6	B7					
BASIC COLOR	BLACK	0	0	0	0	0	0	0	0	0	0	0	0	0	0	0	0	0	0	0	0	0	0	0	0	0	0	0	-	
	BLUE	0	0	0	0	0	0	0	0	0	0	0	0	0	0	0	0	1	1	1	1	1	1	1	1	1	1	1	-	
	GREEN	0	0	0	0	0	0	0	0	1	1	1	1	1	1	1	1	0	0	0	0	0	0	0	0	0	0	0	-	
	CYAN	0	0	0	0	0	0	0	0	1	1	1	1	1	1	1	1	1	1	1	1	1	1	1	1	1	1	1	-	
	RED	1	1	1	1	1	1	1	1	0	0	0	0	0	0	0	0	0	0	0	0	0	0	0	0	0	0	0	-	
	MAGENTA	1	1	1	1	1	1	1	1	0	0	0	0	0	0	0	0	1	1	1	1	1	1	1	1	1	1	1	-	
	YELLOW	1	1	1	1	1	1	1	1	1	1	1	1	1	1	1	1	0	0	0	0	0	0	0	0	0	0	0	-	
	WHITE	1	1	1	1	1	1	1	1	1	1	1	1	1	1	1	1	1	1	1	1	1	1	1	1	1	1	1	-	
GRAY SCALE OF RED	BLACK	0	0	0	0	0	0	0	0	0	0	0	0	0	0	0	0	0	0	0	0	0	0	0	0	0	0	R0		
	DARK ↑	1	0	0	0	0	0	0	0	0	0	0	0	0	0	0	0	0	0	0	0	0	0	0	0	0	0	R1		
		0	1	0	0	0	0	0	0	0	0	0	0	0	0	0	0	0	0	0	0	0	0	0	0	0	0	R2		
		:	:	:	:	:	:	:	:	:	:	:	:	:	:	:	:	:	:	:	:	:	:	:	:	:	:	R3~R252		
		:	:	:	:	:	:	:	:	:	:	:	:	:	:	:	:	:	:	:	:	:	:	:	:	:	:	R3~R252		
	LIGHT ↓	1	0	1	1	1	1	1	1	0	0	0	0	0	0	0	0	0	0	0	0	0	0	0	0	0	0	R253		
		0	1	1	1	1	1	1	1	0	0	0	0	0	0	0	0	0	0	0	0	0	0	0	0	0	0	R254		
	RED	1	1	1	1	1	1	1	1	0	0	0	0	0	0	0	0	0	0	0	0	0	0	0	0	0	0	R255		
GRAY SCALE OF GREEN	BLACK	0	0	0	0	0	0	0	0	0	0	0	0	0	0	0	0	0	0	0	0	0	0	0	0	0	0	G0		
	DARK ↑	0	0	0	0	0	0	0	0	1	0	0	0	0	0	0	0	0	0	0	0	0	0	0	0	0	0	G1		
		0	0	0	0	0	0	0	0	0	1	0	0	0	0	0	0	0	0	0	0	0	0	0	0	0	0	G2		
		:	:	:	:	:	:	:	:	:	:	:	:	:	:	:	:	:	:	:	:	:	:	:	:	:	:	G3~G252		
		:	:	:	:	:	:	:	:	:	:	:	:	:	:	:	:	:	:	:	:	:	:	:	:	:	:	G3~G252		
	LIGHT ↓	0	0	0	0	0	0	0	0	1	0	1	1	1	1	1	1	0	0	0	0	0	0	0	0	0	0	G253		
		0	0	0	0	0	0	0	0	0	1	1	1	1	1	1	1	0	0	0	0	0	0	0	0	0	0	G254		
	GREEN	0	0	0	0	0	0	0	0	1	1	1	1	1	1	1	1	0	0	0	0	0	0	0	0	0	0	G255		
GRAY SCALE OF BLUE	BLACK	0	0	0	0	0	0	0	0	0	0	0	0	0	0	0	0	0	0	0	0	0	0	0	0	0	0	B0		
	DARK ↑	0	0	0	0	0	0	0	0	0	0	0	0	0	0	0	0	1	0	0	0	0	0	0	0	0	0	B1		
		0	0	0	0	0	0	0	0	0	0	0	0	0	0	0	0	0	1	0	0	0	0	0	0	0	0	B2		
		:	:	:	:	:	:	:	:	:	:	:	:	:	:	:	:	:	:	:	:	:	:	:	:	:	:	B3~B252		
		:	:	:	:	:	:	:	:	:	:	:	:	:	:	:	:	:	:	:	:	:	:	:	:	:	:	B3~B252		
	LIGHT ↓	0	0	0	0	0	0	0	0	0	0	0	0	0	0	0	0	1	0	1	1	1	1	1	1	1	1	B253		
		0	0	0	0	0	0	0	0	0	0	0	0	0	0	0	0	0	1	1	1	1	1	1	1	1	1	B254		
	BLUE	0	0	0	0	0	0	0	0	0	0	0	0	0	0	0	0	1	1	1	1	1	1	1	1	1	1	B255		

Note) Definition of Gray :

Rn : Red Gray, Gn : Green Gray, Bn : Blue Gray (n = Gray level)

Input Signal : 0 = Low level voltage, 1 = High level voltage

MODEL	LTA550HQ16	Doc. No	06-000-G-20110608	Page	17 / 28
-------	------------	---------	-------------------	------	---------

Samsung Secret

5. Interface Timing

5.1 Timing Parameters (DE mode)

SIGNAL	ITEM	SYMBOL	MIN.	TYP.	MAX.	Unit	NOTE
Clock	Frequency	$1/T_C$	260	297.0	305	MHz	-
Hsync		F_H	120	135.0	140	KHz	-
Vsync		F_V	95	120.0	125	Hz	-
Vertical Display Term	Active Display Period	T_{VD}	-	1080	-	Lines	-
	Vertical Total	T_V	1110	1125	1350	Lines	-
Horizontal Display Term	Active Display Period	T_{HD}	-	1920	-	Clocks	-
	Horizontal Total	T_H	2092	2200	2348	clocks	-

Note) This product is DE mode. But the Hsync & Vsync signal must be inputted

- (1) Test Point : TTL control signal and CLK at LVDS Tx input terminal in system
- (2) Internal VDD = 3.3V
- (3) Spread spectrum
 - Modulation rate (max) : $\pm 1.5\%$
 - Modulation Frequency : under 100KHz

5.2 LVDS Input Data Characteristics

ITEM		SYMBOL	Min.	Typ.	Max.	UNIT	NOTE
Input Data Position	$F_{IN}=78\text{MHz}$	t_{RSRM}	-	-	450	ps	
		t_{RSLM}	-450	-	-	ps	
Input common mode voltage		V_{CM}	0.3	-	1.8	V	-
Differential Input Voltage		$ V_{ID} $	100	-	600	mV	-

Note) When the skew is measured the Spread Spectrum should be 0%

MODEL

LTA550HQ16

Doc. No

06-000-G-20110608

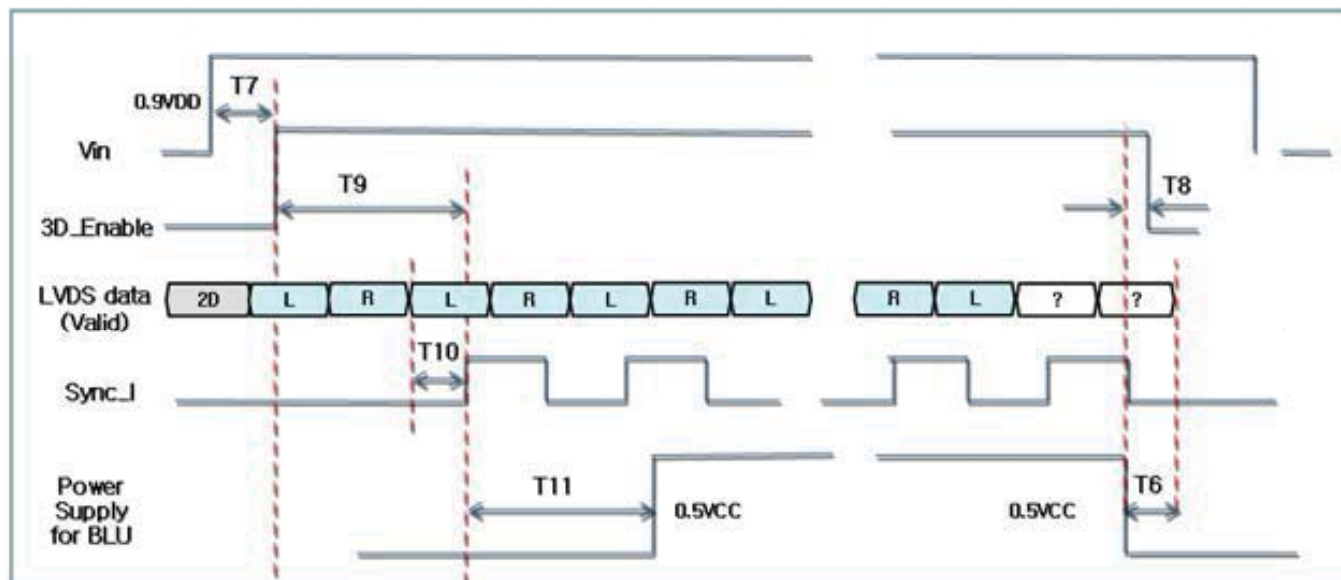
Page

18 / 28

Samsung Secret

5.3 3D mode Sequence

5.3.1 3D Sequence



	Spec	Measured	Result		Spec	Measured	Result
T5	≥ 1000 msec			T8	> 0 msec		
T6	≥ 100 msec			T9	> 0 msec		
T7	≥ 2 sec			T10	Typ. 5msec		

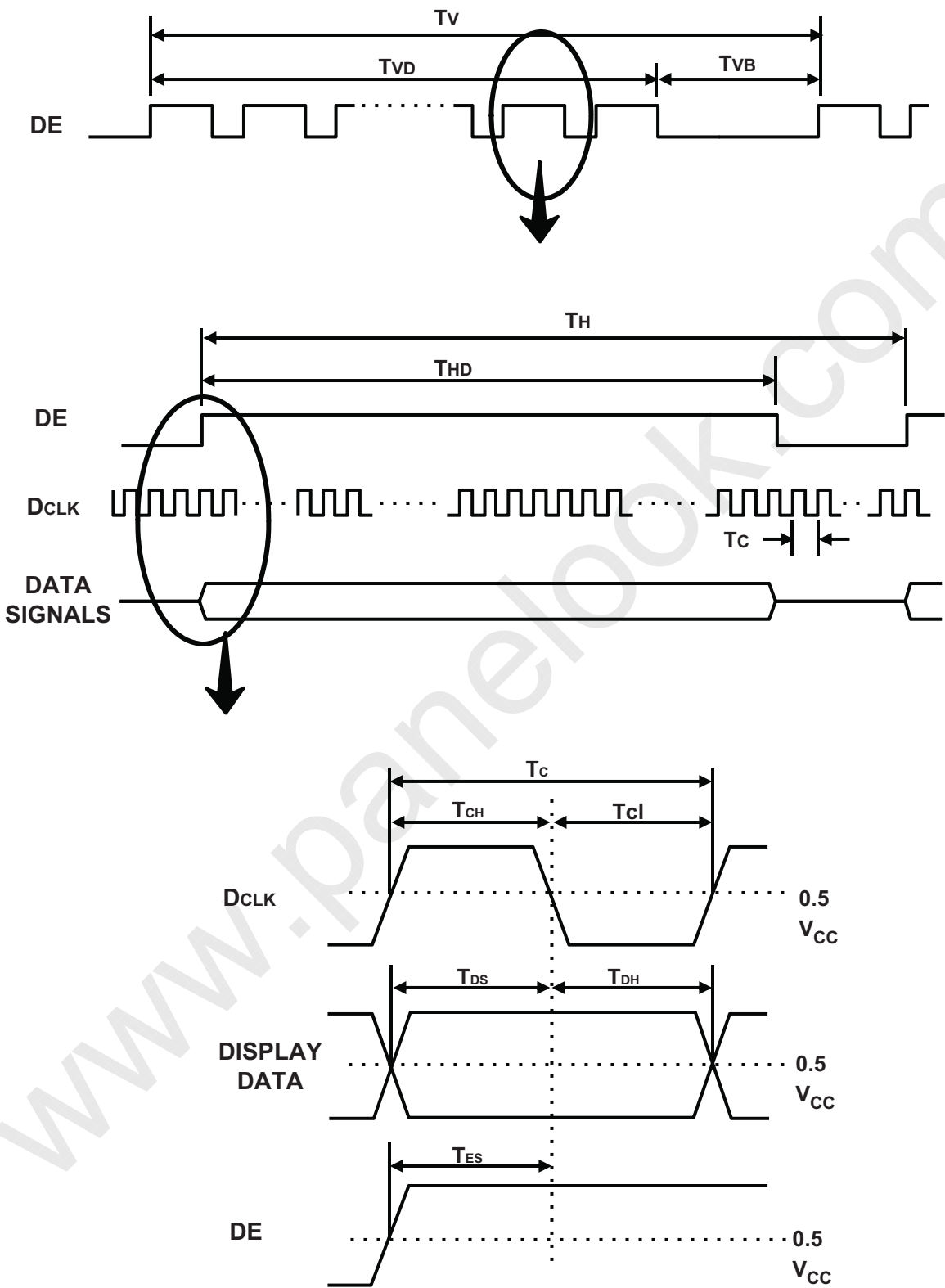
※ T10 : Sync_I is checked with Valid Active L frame

5.3.2 Level of 3D Control signal

Test Items	Test Condition		Spec	
			Min	Max
3D Enable Level	C-PBA Input Level (Change to 3D mode)	High	2.7	3.3
		Low	0.0	0.4
3D_SYNC_I	C-PBA Input Level (L/R Sync)	High	2.7	3.3
		Low	0.0	0.4
3D_SYNC_O	Shutter Glasses Sync Level	High	2.7	3.3
		Low	0.0	0.4

5.4 Timing diagrams of interface signal (DE mode)

Samsung Secret

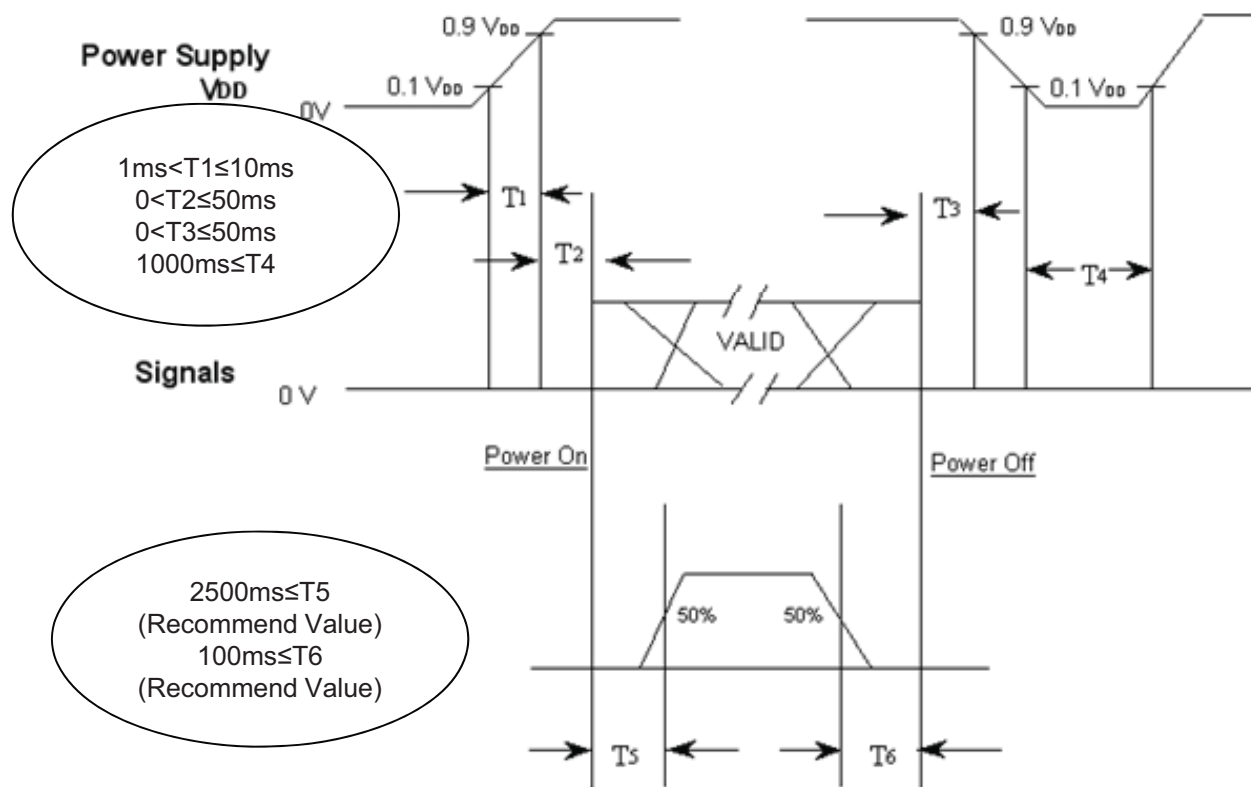


MODEL	LTA550HQ16	Doc. No	06-000-G-20110608	Page	20 / 28
-------	------------	---------	-------------------	------	---------

5.5 Power ON/OFF Sequence

Samsung Secret

To prevent a latch-up or DC operation of the LCD Module, the power on/off sequence should be as the diagram below.



T1 : V_{DD} rising time from 10% to 90%

T2 : The time from V_{DD} to valid data at power ON.

T3 : The time from valid data off to V_{DD} off at power Off.

T4 : V_{DD} off time for Windows restart

T5 : The time from valid data to B/L enable at power ON.

T6 : The time from valid data off to B/L disable at power Off.

- The supply voltage of the external system for the Module input should be the same as the definition of V_{DD}.
- Apply the lamp voltage within the LCD operation range. When the back light turns on before the LCD operation or the LCD turns off before the back light turns off, the display may momentarily show abnormal screen.
- In case of V_{DD} = off level, please keep the level of input signals low or keep a high impedance.
- T4 should be measured after the Module has been fully discharged between power off and on period.
- Interface signal should not be kept at high impedance when the power is on.
- In Case T5 is less than 1000msec and T6 is less than 100msec, Garbage Display can be seen. (It is not related to electrical function issue, Just for recommendation to prevent Garbage Display)

MODEL

LTA550HQ16

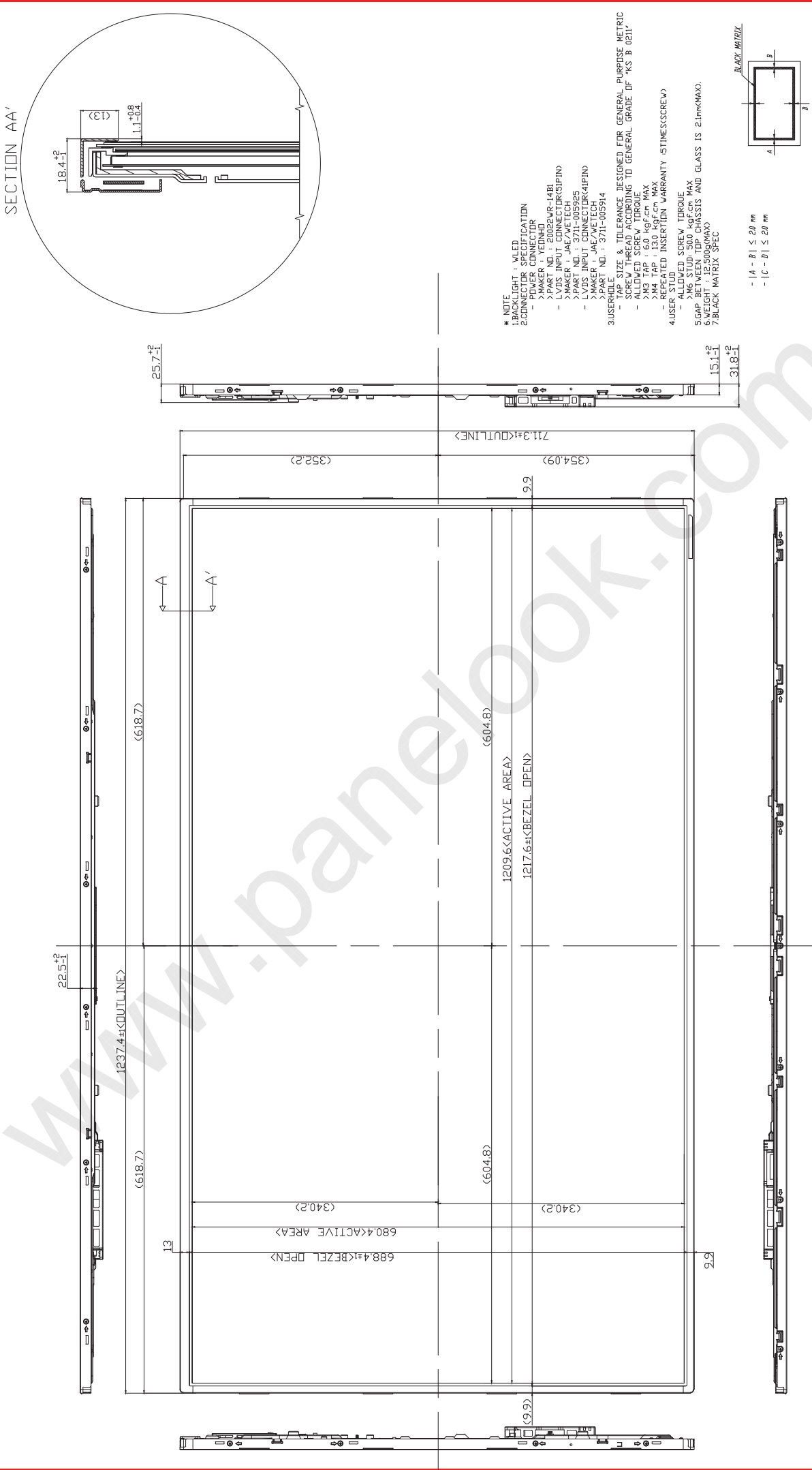
Doc. No

06-000-G-20110608

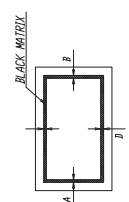
Page

21 / 28

NO	PART NAME	CODE NO	SPECIFICATION	QTY	WEIGHT	WORKS IN	REMARK
	OUTLINE DIMENSION(DWG)	L7A550H016	L7A550H016				



- NOTE
- BACKLIGHT : WLED
 - CONNECTOR SPECIFICATION
 - POWER CONNECTOR
 - TELEPHONE CONNECTOR
 - PART NO. 2002226R-14B1
 - LVDS INPUT CONNECTOR(GIPIN)
 - MAKER : JAE/AETECH
 - PART NO. : 3711-005925
 - MAKER : JAE/AETECH
 - PART NO. : 3711-005914
 - USERHOLE
 - TAP SIZE & TOLERANCE DESIGNED FOR GENERAL PURPOSE METRIC
 - APPLY TORQUE INCLUDING TO GENERAL GRADE OF 'KS B 021'
 - ALLOWED SCREW TORQUE
 - M3 TAP : 6.0 kgf.cm MAX
 - M4 TAP : 13.0 kgf.cm MAX
 - REPEATED INSERTION WARRANTY : 5TIMES(SCREW)
 - USERHOLE
 - ALLOWED SCREW TORQUE
 - M6 STUD : 50.0 kgf.cm MAX
 - GAP BETWEEN TOP CHASSIS AND GLASS IS 2.1mm(MAX).
 - WEIGHT : 12.500g(MAX)
 - BLACK MATRIX SPEC

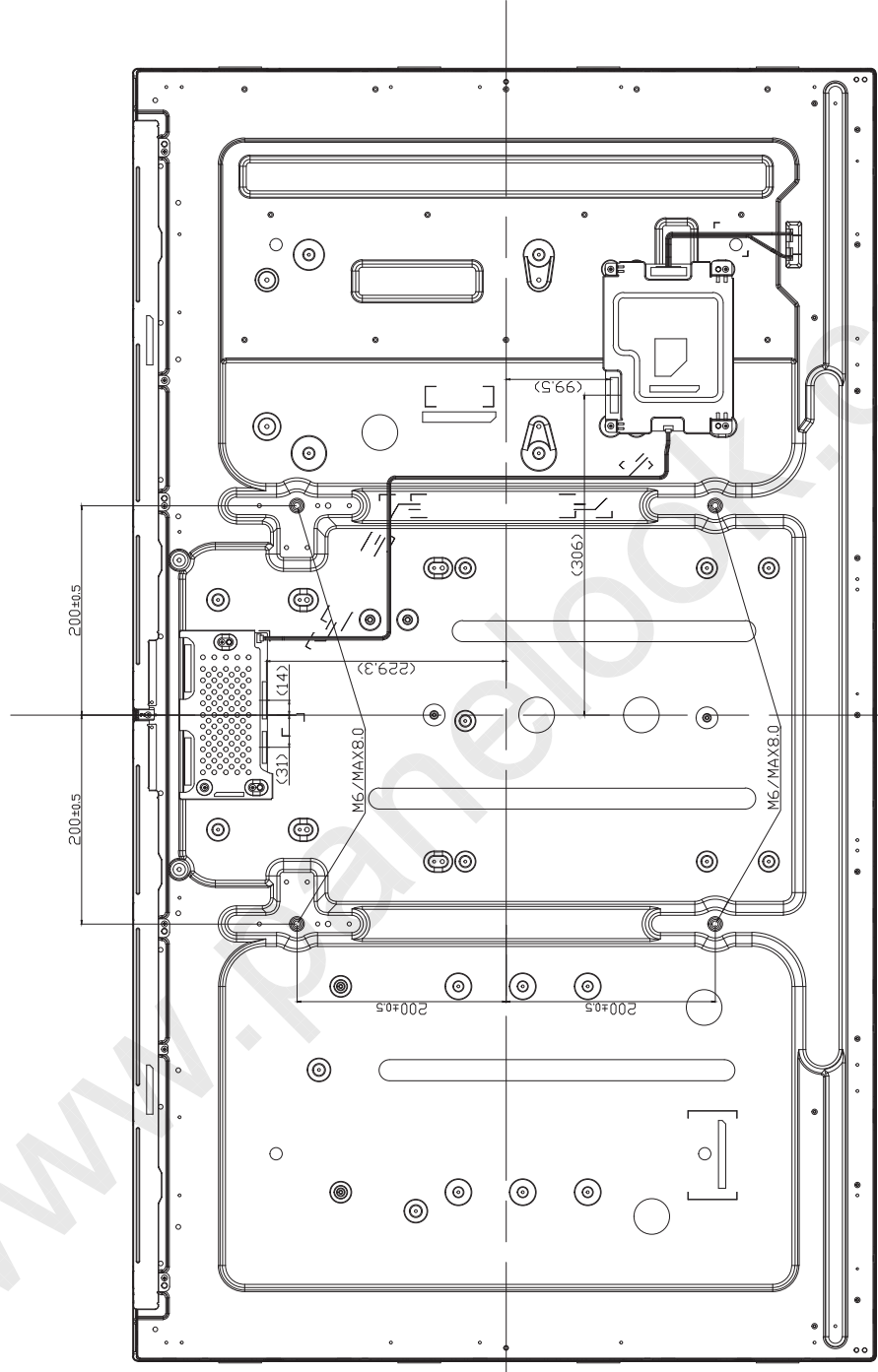


- |A - B| ≤ 20 mm
- |C - D| ≤ 20 mm

GENERAL TOLERANCE		REV	DATE	DESCRIPTION OF REVISION	REASON	CHG BY
STEP	LEVEL 1	LEVEL 2	LEVEL 3	UNITS	SCALE	DATE
0 < X < 4	±0.05	±0.1	±0.2	MM	S.W./M	
4 < X < 16	±0.08	±0.15	±0.3			
16 < X < 64	±0.12	±0.25	±0.5			
64 < X < 256	±0.25	±0.4	±0.8			

MODEL NAME	L7A550H016
PART/SHEET	OUTLINE DIMENSION(DWG)
DATE	2011.05.08
SPEC. NO.	
CODE NO.	SAMSUNG ELECTRONICS
REV. 001	

NO. PART NAME CODE NO. SPECIFICATION QTY. WEIGHT NUMBER OF WORKS. REMARKS
 M. OUTLINE DIMENSION (MM)



PRELIMINARY

GENERAL TOLERANCE		REV.	DATE	DESCRIPTION OF REVISION		CHKD BY		
STEP	LEVEL 1	LEVEL 2	LEVEL 3	UNIT	MM	DRWN BY	DESIGN BY	CHKD BY
0 < X < 4	±0.05	±0.1	±0.2	SCALE	1/1.25	S.W./J.M.		
4 < X < 16	±0.08	±0.15	±0.3	LEVEL 3				
16 < X < 64	±0.12	±0.25	±0.5					
64 < X < 256	±0.25	±0.4	±0.8					

REASON	MODEL NAME	PART/SHEET NAME	SHEET 1/2
LTAS50H016	LTAS50H016	OUTLINE DIMENSION	1/2

REV.	DATE	DESCRIPTION
1	2011.05.08	SAMSUNG ELECTRONICS

Samsung Secret

7. PACKING

7.1 CARTON (Internal Package)

(1) Packing Form

Corrugated fiberboard box and corrugated cardboard as shock absorber

(2) Packing Method

**Packing
-Pallet Box**

LCD Module

**Packing
-Pallet Box**

Pallet-Plastic



7.2 Packing Specification

Item	Specification	Remark
LCD Packing	22 ea / (Packing-Pallet Box)	1. 13 kg / LCD (1 ea) 2. 33.8 kg / Packing Set 3. Packing Material : Paper
Pallet	1Box / Pallet	1. Pallet weight = 9.3 kg
Packing Direction	Vertical	
Total Pallet Size	H x V x height	1150mm(H) x 1470mm(V) x 893mm(height)
Total Pallet Weight	329.1 kg	Pallet (9.3 kg) + Module (286 kg) + Packing Set (33.8 kg)

MODEL

LTA550HQ16

Doc. No

06-000-G-20110608

Page

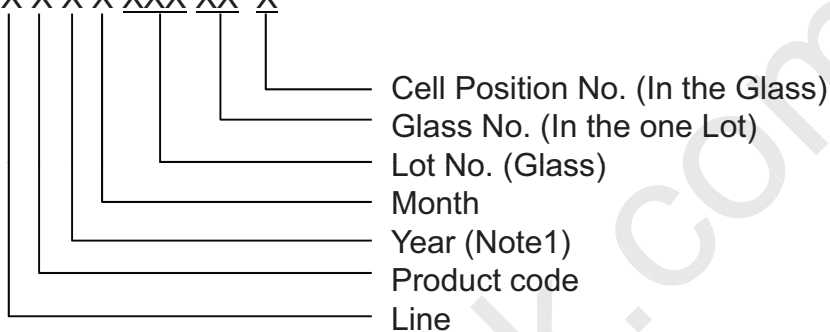
24 / 28

Samsung Secret

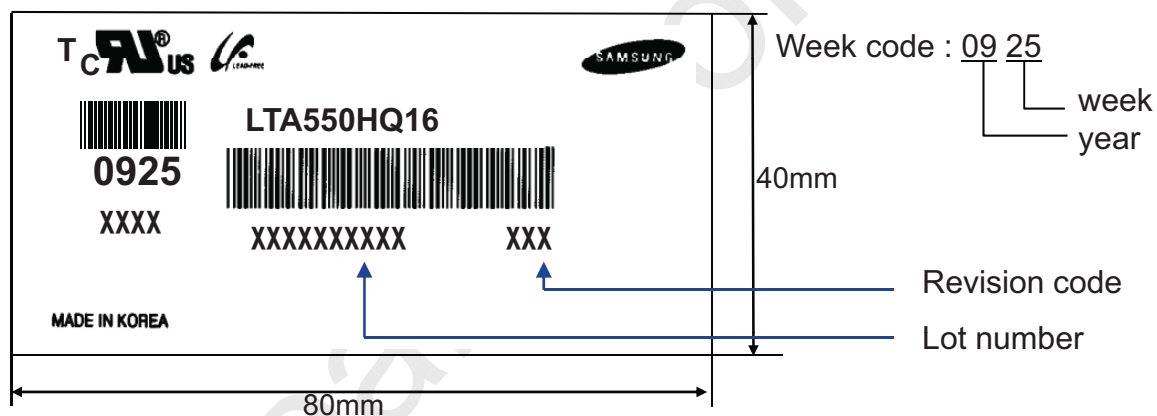
8. MARKING & OTHERS

A nameplate bearing followed by is affixed to a shipped product at the specified location on each product.

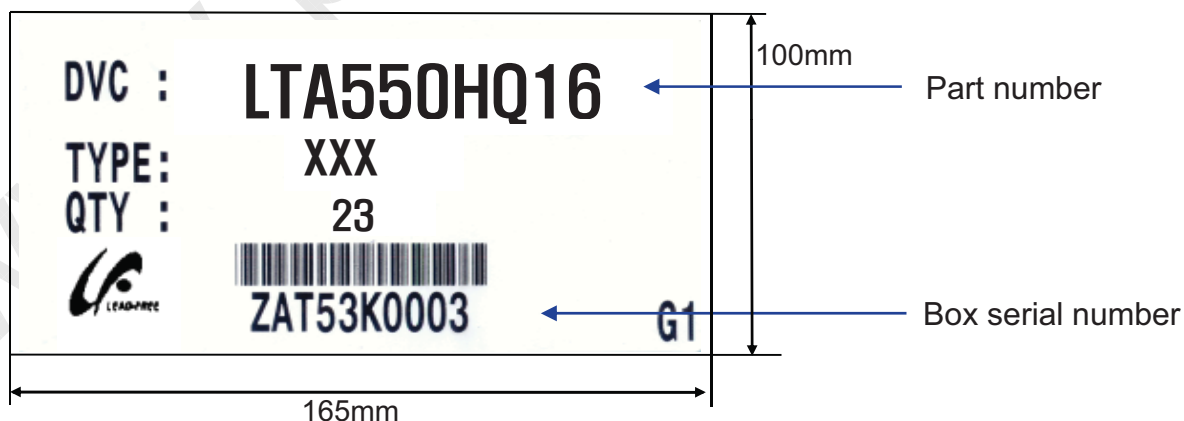
- (1) Part number : LTA550HQ16
- (2) Revision: Three letters
- (3) Lot number : X X X X XXX XX X



(4) Nameplate Indication



(5) Packing box attach



(6) Others

- 1. After service part
 Lamps cannot be replaced because of the narrow bezel structure.

MODEL	LTA550HQ16	Doc. No	06-000-G-20110608	Page	25 / 28
-------	------------	---------	-------------------	------	---------

9. General Precautions

Samsung Secret

9.1 Handling

- (a) When the Module is assembled, it should be attached to the system firmly using all mounting holes. Be careful not to twist and bend the Module.
- (b) Because the inverter use high voltage, it should be disconnected from power before it is assembled or disassembled.
- (c) Refrain from strong mechanical shock and / or any force to the Module.
In addition to damage, this may cause improper operation or damage to the Module and CCFT back light.
- (d) Note that polarizers are very fragile and could be damage easily.
Do not press or scratch the surface harder than a HB pencil lead.
- (e) Wipe off water droplets or oil immediately. If you leave the droplets for a long time, staining or discoloration may occur.
- (f) If the surface of the polarizer is dirty, clean it using absorbent cotton or soft cloth.
- (g) Desirable cleaners are water, IPA(Isopropyl Alcohol) or Hexane.
Do not use Ketone type materials(ex. Acetone), Ethyl alcohol, Toluene, Ethyl acid or Methyl chloride. It might permanent damage to the polarizer due to chemical reaction.
- (h) If the liquid crystal material leaks from the panel, it should be kept away from the eyes or mouth . In case of contact with hands, legs or clothes, it must be washed away with soap thoroughly.
- (i) Protect the module from Electrostatic discharge. Otherwise the ASIC IC or semiconductor would be damaged.
- (j) Use finger-stalls with soft gloves in order to keep display clean during the incoming inspection and assembly process.
- (k) Do not disassemble the Module.
- (l) Do not disassemble shield case of inverter & LVDS board
- (m) Do not connect N.C pins. (Samsung internal use only)
- (n) Protection film for polarizer on the Module should be slowly peeled off just before use so that the electrostatic charge can be minimized. Must put on antistatic glove while handling a module
- (o) Pins of I/F connector should not be touched directly with bare hands.

MODEL

LTA550HQ16

Doc. No

06-000-G-20110608

Page

26 / 28

Samsung Secret

9.2 Storage

- (a) Do not leave the Module in high temperature, and high humidity for a long time. It is highly recommended to store the Module with temperature from 0 to 35°C and relative humidity of less than 70%.
- (b) Do not store the TFT-LCD Module in direct sunlight.
- (c) The Module should be stored in a dark place. It is prohibited to apply sunlight or fluorescent light in storing.
- (d) Storage condition of Packing

ITEM	UNIT	Min.	Max.
Storage Temperature	(°C)	5	40
Storage Humidity	(%rH)	35	75
Storage Life	12 months		
Storage Condition	<ul style="list-style-type: none"> - Prohibit direct sunlight - Ventilation in storehouse and control changing temperature is within limits of environment - Put it on pallet and store them with removing from wall. - Don't wet Out-BOX and avoid rain. - Without condensation. - Etc. Avoid harmful Condition 		
Long-term Storage Process	-More than 3 months Storage or Low temp. Delivery/under 5°C storage → On the 20°C, 50%rH Condition, more than 10hr release.		

9.3 Operation

- (a) Do not connect or disconnect the Module in the "Power On" condition.
- (b) Power supply should always be turned on/off by the "Power on/off sequence"
- (c) Module has high frequency circuits. Sufficient suppression to the electromagnetic interference should be done by system manufacturers. Grounding and shielding methods may be important to minimize the interference.
- (d) The cable between the back light connector and its inverter power supply should be connected directly with a minimized length. A longer cable between the back light and the inverter may cause lower luminance of lamp(CCFT) and may require higher startup voltage(Vs).

MODEL

LTA550HQ16

Doc. No

06-000-G-20110608

Page

27 / 28

Samsung Secret

9.4 Operation Condition Guide

- (a) The LCD product should be operated under normal conditions.
Normal condition is defined as below;
- Temperature : $20 \pm 15^{\circ}\text{C}$
 - Humidity : $55 \pm 20\%$
 - Display pattern : continually changing pattern (Not stationary)
- (b) If the product will be used in extreme conditions such as high temperature, humidity, display patterns or operation time etc., It is strongly recommended to contact SEC for Application engineering advice. Otherwise, its reliability and function may not be guaranteed. Extreme conditions are commonly found at Airports, Transit Stations, Banks, Stock market, and Controlling systems.

9.5 Others

- (a) Ultra-violet ray filter is necessary for outdoor operation.
- (b) Avoid condensation of water. It may result in improper operation or disconnection of electrode.
- (c) Do not exceed the absolute maximum rating value. (supply voltage variation, input voltage variation, variation in part contents and environmental temperature, and so on)
Otherwise the Module may be damaged.
- (d) If the Module keeps displaying the same pattern for a long period of time, the image may be "sticked" to the screen.
To avoid image sticking, it is recommended to use a screen saver.
- (e) This Module has its circuitry PCB's on the rear side and should be handled carefully in order not to be stressed.
- (f) Please contact SEC in advance when you display the same pattern for a long time.

MODEL

LTA550HQ16

Doc. No

06-000-G-20110608

Page

28 / 28