

# DATA SHEET

www.DataSheet4U.com

SAMSUNG

**LT1570HH-L01**

SA-01-139

Version 05-000

15.02.2007

The information given in this document is carefully checked and believed to be reliable. However, Distec takes no responsibility for any failure or product damage caused by the application of this information. Please check all connections carefully with the data sheet. Distec products are not intended for use in systems in which failures of product could result in personal injury. All mentioned trademarks are registered trademarks of their owner.

All specifications are subject to change without notification.



Approval

**Customer : Distec**

**DATE : 15.Feb.2007**

**SAMSUNG TFT-LCD**  
**MODEL : LTI570HH-L01**

Any Modification of Specification is not allowed without SEC's Permission.

NOTE :

<b>Customer's Approval</b>	
SIGNATURE	DATE

PREPARED BY <b>Nam Heon Kim</b>	DATE 15.Feb.2007
PREPARED BY <b>Yu-Geun Lee</b>	DATE 15.Feb.2007

Development Team 2, LCD Business

Samsung Electronics Co . , LTD.

MODEL	LTI570HH-L01	Doc. No	05-000-G-070215	Page	1 / 28
-------	--------------	---------	-----------------	------	--------

## Contents

Revision History .....	(3)
General Description .....	(4)
General Information .....	(4)
1. Absolute Maximum Ratings .....	(5)
2. Application information for I.D. (Information Display) .....	(6)
3. Optical Characteristics .....	(7)
4. Electrical Characteristics .....	(10)
4.1 TFT LCD Module	
4.2 Back Light Unit	
4.3 Inverter Input & Specification	
5. Input Terminal Pin Assignment .....	(13)
5.1 Input Signal & Power	
5.2 Inverter Input Pin Configuration	
5.3 Inverter Input Power Sequence	
5.4 LVDS Interface	
5.5 Input Signals, Basic Display Colors and Gray Scale of Each Color	
6. Interface Timing .....	(18)
6.1 Timing Parameters (DE only mode)	
6.2 Timing Diagrams of interface Signal (DE only mode)	
6.3 Power ON/OFF Sequence	
7. Outline Dimension .....	(21)
8. Reliability Test .....	(23)
9. Packing .....	(24)
10. Marking & Others .....	(25)
11. General Precaution .....	(26)
11.1 Handling	
11.2 Storage	
11.3 Operation	
11.4 Operation Condition Guide	
11.5 Others	

MODEL

LTI570HH-L01

Doc. No

05-000-G-070215

Page

2 / 28

**\* Revision History**

Date	Rev. No	Page	Summary
Feb 15, 2007	000	all	First issued

www.DataSheet4U.com

MODEL	LTI570HH-L01	Doc. No	05-000-G-070215	Page	3 / 28
-------	--------------	---------	-----------------	------	--------

## General Description

### Description

LTI570HH-L01. is a color active matrix liquid crystal display (LCD) that uses amorphous silicon TFT (Thin Film Transistor) as switching components. This model is composed of a TFT LCD panel, a driver circuit and a back light unit. The resolution of a 57.0" is 1920 x 1080 and this model can display up to 16.7 million colors with wide viewing angle of 89° or higher in all directions. This panel is intended to support applications to provide an excellent performance for Flat Panel Display such as Home-alone Multimedia TFT-LCD TV, Display terminals for AV application products, and Digital Information Display (DID).

### Features

- RoHS compliance (Pb-free)
- High contrast ratio, High aperture ratio, High luminance
- SPVA (Super Patterned Vertical Align) mode
- Wide viewing angle ( $\pm 178^\circ$ )
- High speed response
- WXGA (1920 x 1080 pixels) resolution (16:9)
- Low Power consumption
- Direct Type 36 CCFTs (Cold Cathode Fluorescent Tube)
- DE (Data Enable) mode
- LVDS (Low Voltage Differential Signaling) interface (2pixel/clock)

## General Information

Items	Specification	Unit	Note
Module Size	1328.0( $W_{TYP}$ ) x 764.0( $H_{TYP}$ )	mm	$\pm 1.0$ mm
	64.5( $D_{MAX}$ )		
Weight	31,100(Max.)	g	
Pixel Pitch	0.65175(H) x 0.65175(V)	mm	
Active Display Area	1251.36(H) x 703.89(V)	mm	
Surface Treatment	Haze 40% , Hard-coating (3H)		
Display Colors	8 bit - 16.7M	colors	
Number of Pixels	1920 x 1080	pixel	
Pixel Arrangement	RGB vertical stripe		
Display Mode	Normally Black		
Luminance of White	600 (Typ.)	cd/m <sup>2</sup>	

MODEL

LTI570HH-L01

Doc. No

05-000-G-070215

Page

4 / 28

## 1. Absolute Maximum Ratings

If the condition exceeds maximum ratings, it can cause malfunction or unrecoverable damage to the device.

Item	Symbol	Min.	Max.	Unit	Note
Power Supply Voltage	$V_{DD}$	GND-0.5	13.2	V	(1)
Storage temperature	$T_{STG}$	-20	60		(2)
Glass surface temperature (Operation)	Center	$T_{OPR}$	0	50	(2),(5)
	T. Uniformity	T	-	10	
Shock ( non - operating )	$S_{nop}$	-	30	G	(3)
Vibration ( non - operating )	$V_{nop}$	-	1.5	G	(4)

Note (1)  $T_a = 25 \pm 2 \text{ }^\circ\text{C}$

(2) Temperature and relative humidity range are shown in the figure below.

- a. 90 % RH Max. ( $T_a < 39 \text{ }^\circ\text{C}$ )
- b. Relative Humidity is 90% or less. ( $T_a > 39 \text{ }^\circ\text{C}$ )
- c. No condensation

(3) 11ms, sine wave, one time for  $\pm X, \pm Y, \pm Z$  axis

(4) 10-300 Hz, Sweep rate 10min, 30min for X,Y,Z axis

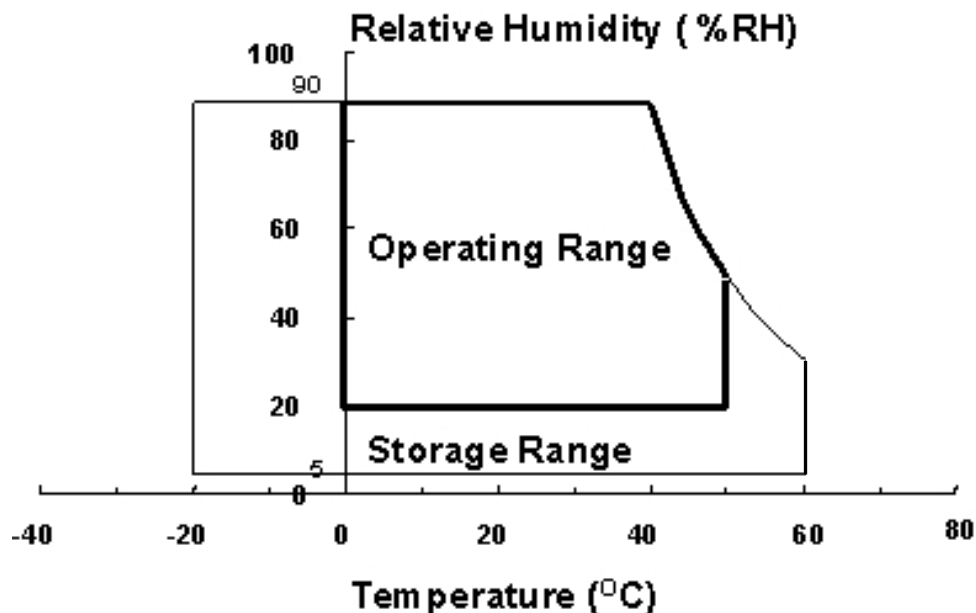


Fig. Temperature and Relative humidity range

MODEL

LTI570HH-L01

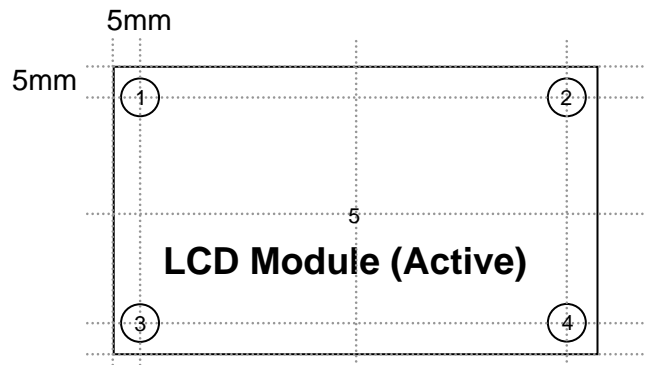
Doc. No

05-000-G-070215

Page

5 / 28

(5) Definition of test point



$T_{OPR}$  : Temperature of the center of the glass surface (Test point 5)  
 $T1 \sim T4$  : Temperature of each edge of the glass surface  
 $T_{MAX}$  : The highest temperature of the glass surface

## 2. Application information for I.D. (Information Display)

Generally large-sized LCD modules are designed for TV applications. A long-term display like DID application can cause uneven display including image retention. To optimize module's lifetime and function, several operating usages are required.

1. Normal operating condition

- Temperature:  $20 \pm 15$
- Humidity:  $65 \pm 20 \%$
- Display pattern: moving picture

Note) Long-term static information image can cause uneven display.

2. Operating usages under abnormal operating condition. Note (1)

- Ambient condition
  - Well-ventilated place is recommended to set up I.D. system.
- Power off and screen saver
  - Periodical power-off or screen saver is needed after long-term static display. Note (2)

3. Operating usages to protect uneven display due to long-term static information display

- Suitable operating time: under 18 hours a day.
- Static information display is recommended to use moving picture periodically.
  - Change display to moving picture for 10 seconds after 5 minutes static information display.
- Background and character (image) color change
  - Use different colors for background and character (image), respectively.
  - Change colors periodically.
- Avoid combination of background and character with large different luminance.

Note (1) Abnormal condition means every operating condition except normal operating condition.

Note (2) Moving picture or black pattern is strongly recommended for screen saver.

4. Lifetime in this spec is guaranteed only when I.D. is used under operating usages.

MODEL	LTI570HH-L01	Doc. No	05-000-G-070215	Page	6 / 28
-------	--------------	---------	-----------------	------	--------

### 3. Optical Characteristics

The optical characteristics should be measured in a dark room or equivalent.

Measuring equipment : TOPCON BM-7,SPECTRORADIOMETER SR-3

(Ta = 25 ± 2°C, VDD = 12V, fv = 60Hz, f<sub>DCLK</sub> = 148.5MHz, I<sub>L</sub> = 6.0mArms)

Item	Symbol	Condition	Min.	Typ.	Max.	Unit	Note	
Contrast Ratio (Center of screen)	C/R	Normal $\theta_{L,R}=0$ $\theta_{U,D}=0$	1000	1200	-		(3) SR-3	
Response Time	Rising		Tr	-	3.5	10	msec	(5) BM-7
	Falling		Tf	-	4.5	10		
	G-to-G		Tg	-	8	-		
Luminance of White (Center of screen)	Y <sub>L</sub>		500	600	-	cd/m <sup>2</sup>	(6) SR-3	
Color Chromaticity (CIE 1931)	Red	Rx	TYP. -0.03	0.648	TYP. +0.03		(7),(8) SR-3	
		Ry		0.333				
	Green	Gx		0.271				
		Gy		0.592				
	Blue	Bx		0.141				
		By		0.066				
	White	Wx		0.280				
		Wy		0.290				
Color Gamut	-		-	72	-	%	(7) SR-3	
Color Temperature	-		-	10,000	-	K	(7) SR-3	
Viewing Angle	Hor.	$\theta_L$	C/R 10	75	89	-	Degree	(8) SR-3
		$\theta_R$		75	89	-		
	Ver.	$\theta_U$		75	89	-		
		$\theta_D$		75	89	-		
Brightness Uniformity (9 Points)	B <sub>uni</sub>		-	-	25	%	(4) SR-3	

#### Note (1) Test Equipment Setup

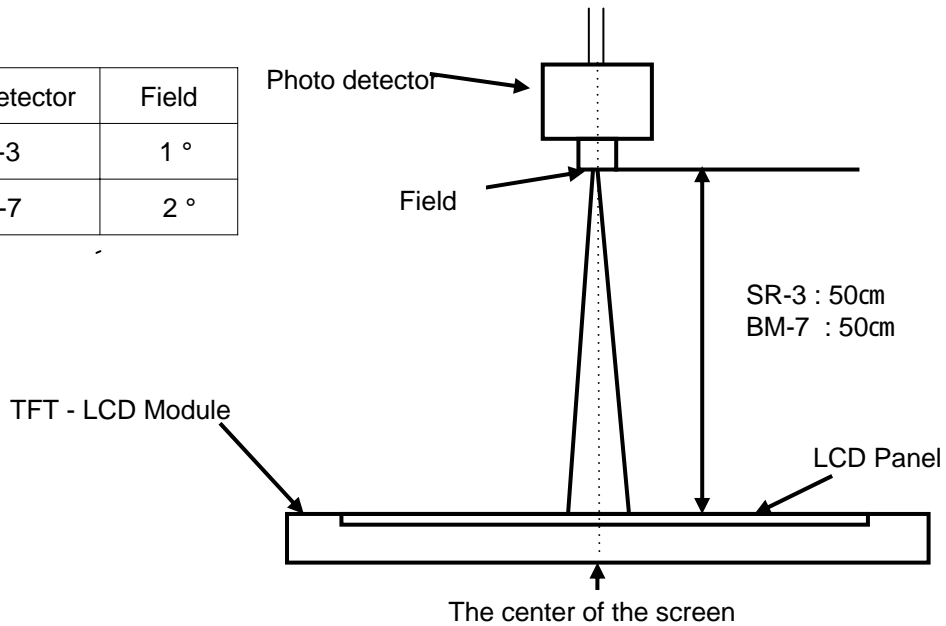
The measurement should be executed in a stable, windless and dark room between 40min and 60min after lighting the back light at the given temperature for stabilization of the back light. This should be measured in the center of screen.

Single lamp current : 6.0mA

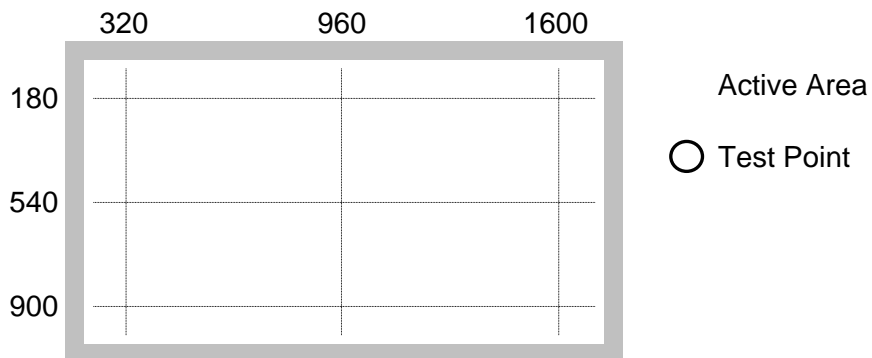
Environment condition : Ta = 25 ± 2 °C



Photo detector	Field
SR-3	1 °
BM-7	2 °



Note (2) Definition of test point



Note (3) Definition of Contrast Ratio (C/R)

: Ratio of gray max (Gmax) & gray min (Gmin) at the center point of the panel

$$C/R = \frac{G_{\max}}{G_{\min}}$$

Gmax : Luminance with all pixels white

Gmin : Luminance with all pixels black

MODEL

LTI570HH-L01

Doc. No

05-000-G-070215

Page

8 / 28

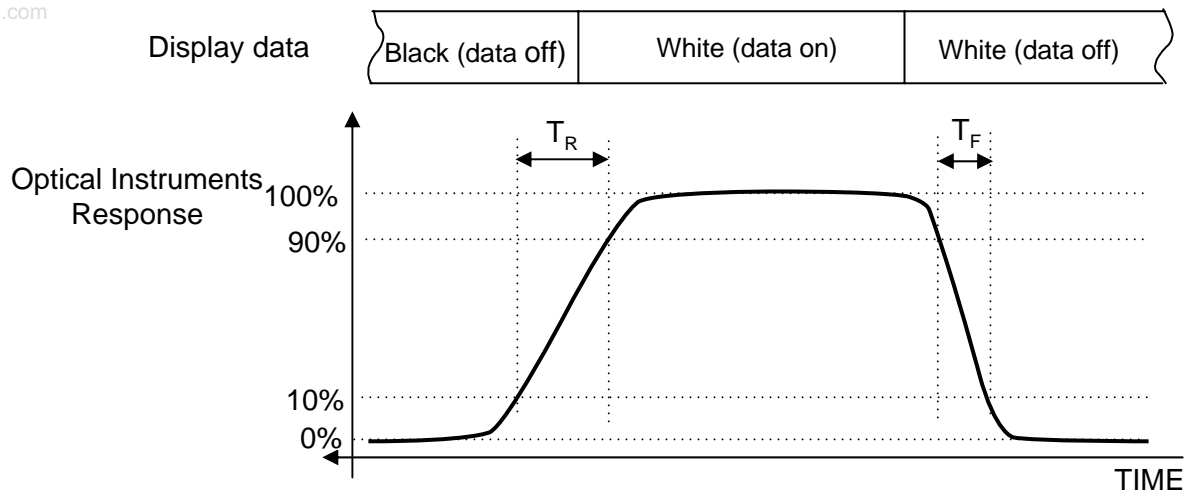
Note (4) Definition of 9 points brightness uniformity

$$B_{uni} = 100 * \frac{(B_{max} - B_{min})}{B_{max}}$$

Bmax : Maximum brightness

Bmin : Minimum brightness

Note (5) Definition of Response time : Sum of Tr, Tf



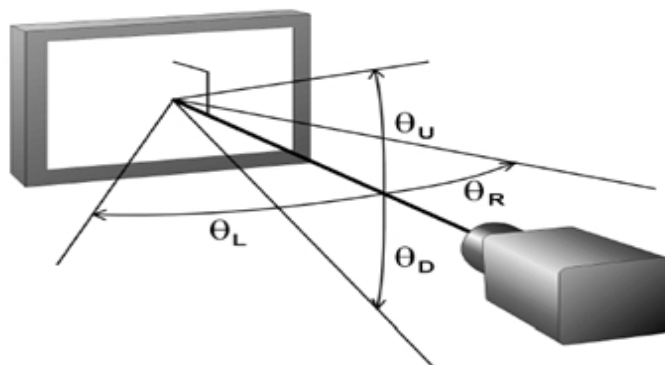
Note (6) Definition of Luminance of White : Luminance of white at center point

Note (7) Definition of Color Chromaticity (CIE 1931)

Color coordinate of Red, Green, Blue & White at center point

Note (8) Definition of Viewing Angle

: Viewing angle range (C/R 10)



MODEL

LTI570HH-L01

Doc. No

05-000-G-070215

Page

9 / 28

## 4. Electrical Characteristics

### 4.1 TFT LCD Module

The connector for display data & timing signal should be connected.

$T_a = 25^\circ\text{C} \pm 2^\circ\text{C}$

Item	Symbol	Min.	Typ.	Max.	Unit	Note
Voltage of Power Supply	$V_{DD}$	10.8	12.0	13.2	V	(1)
Current of Power Supply	(a) Black	-	-	1180	mA	(2),(3)
	(b) White	-	-	1150	mA	
	(c) N-Pattern	-	-	1200	mA	
Vsync Frequency	$f_V$	50	60	62	Hz	
Hsync Frequency	$f_H$	60.0	67.5	70.0	kHz	
Main Frequency	$f_{DCLK}$	120.0	148.5	154.0	MHz	
Rush Current	$I_{RUSH}$	-	-	5	A	(4)

Note (1) The ripple voltage should be controlled under 10% of  $V_{DD}$ .

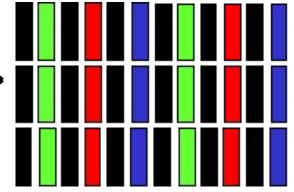
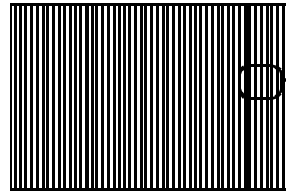
(2)  $f_V = 60\text{Hz}$ ,  $f_{DCLK} = 148.5\text{MHz}$ ,  $V_{DD} = 12.0\text{V}$ , DC Current.

(3) Power dissipation check pattern (LCD Module only)

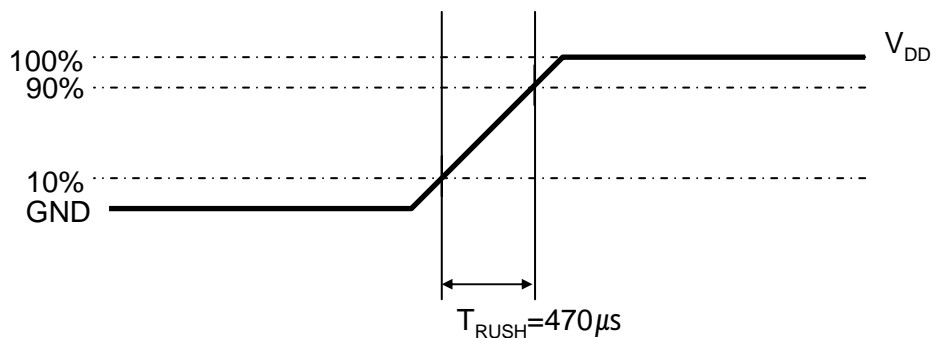
a) Black Pattern

b) White Pattern

c) N-Pattern



#### (4) Measurement Conditions



Rush Current  $I_{RUSH}$  can be measured when  $T_{RUSH}$  is  $470\mu\text{s}$ .

MODEL

LTI570HH-L01

Doc. No

05-000-G-070215

Page

10 / 28

## 4.2 Back Light Unit

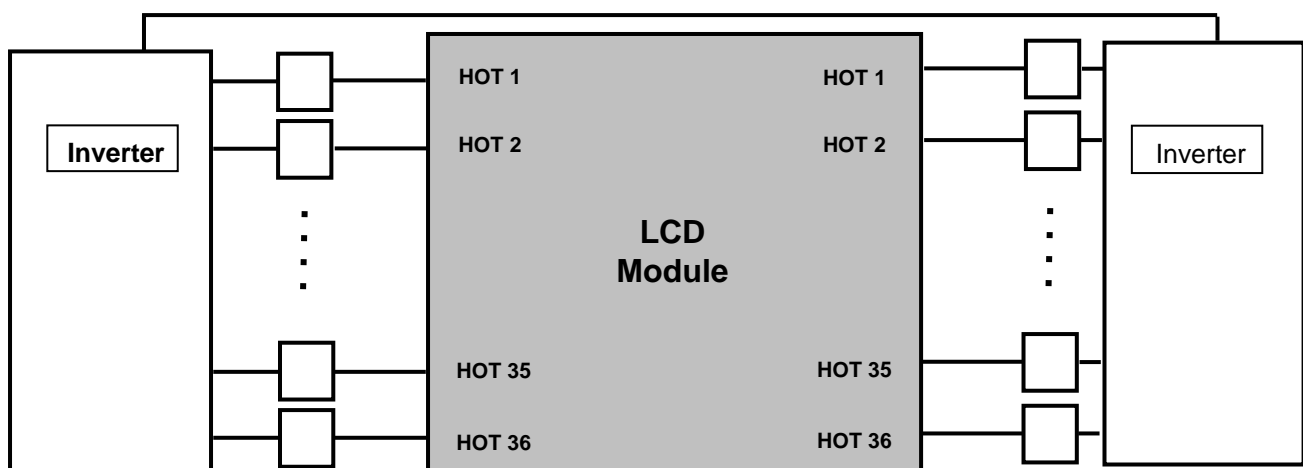
The back light unit contains 36 direct-lighting type CCFTs (Cold Cathode Fluorescent Tube). The characteristics of lamps are shown in the following tables.

$T_a = 25 \pm 2^\circ\text{C}$

Item	Symbol	Min.	Typ.	Max.	Unit	Note
Lamp Current	$I_L$	4.0	5.5	7.0	mArms	
Lamp Voltage	$V_L$	1976	2080	2184	Vrms	
Operating Life Time	Hr	50,000	-	-	Hour	(1)

Note (1) It is defined as the time to take until the brightness reduces to 50% of its original value.

[Operating condition :  $T_a = 25 \pm 2$  ,  $I_L = 5.5\text{mArms}$ , For single lamp only]

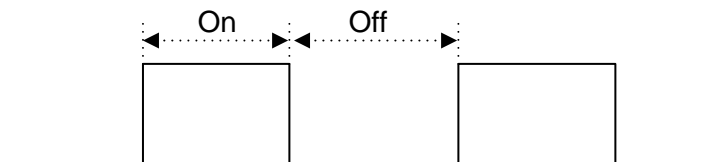


### 4.3 Inverter Input Condition & Specification

Items	Symbol	Conditions	Specifications			Unit	Note
			Min.	Typ.	Max.		
Input Voltage	V <sub>in</sub>	-	22	24	26	V	T <sub>a</sub> =25±2 °C
Input Current	I <sub>in</sub>	V <sub>in</sub> = 24.0V V <sub>dim</sub> = 3.3V	-	-	21	A	After 1 hour Warm-up @ V <sub>in</sub> =24V
Lamp Current	I <sub>O,MAX</sub>	V <sub>dim</sub> = 3.3V	5.5	6.0	6.5	mArms	
Frequency	F <sub>LAMP</sub>	V <sub>in</sub> = 24.0V V <sub>dim</sub> = 3.3V	45	49	52	kHz	
Backlight On/Off	On	V <sub>in</sub> = 24.0V	2.4	-	5.5	V	-
	Off		0	-	0.8		
PWM Frequency	F <sub>pwm</sub>	V <sub>in</sub> = 24.0V	120	150	180	Hz	-
External PWM Dimming	-	V <sub>in</sub> = 24.0V	30	-	100	%	(2)
Internal PWM Dimming	-	V <sub>in</sub> = 24.0V	0	-	3.3	V	(3)

Note (1) Power Consumption is measured at 600[cd/m<sup>2</sup>] of luminance condition which is the typical luminance value. Lamp Current is measured at the point before Lamp.

Note (2) High-duty = On/(On+Off) \* 100



(3) Internal PWM Dimming

- Analog DC Voltage 0 V : Minimum Duty
- Analog DC Voltage 3.3 V : Maximum Duty (100%)

MODEL	LTI570HH-L01	Doc. No	05-000-G-070215	Page	12 / 28
-------	--------------	---------	-----------------	------	---------

## 5. Input Terminal Pin Assignment

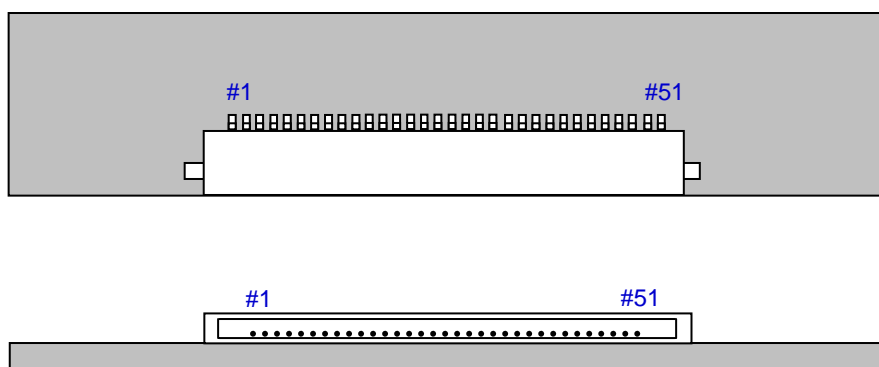
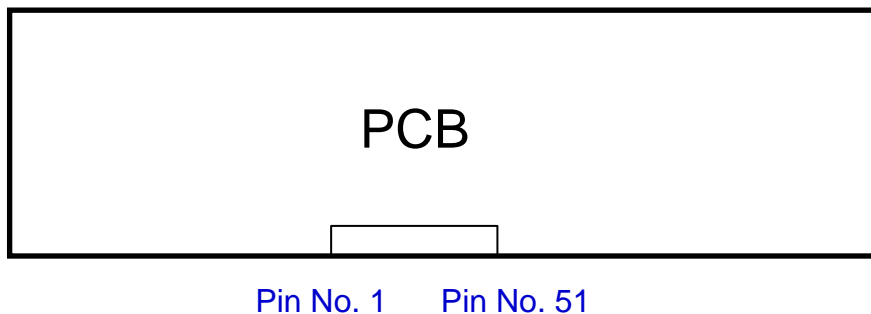
### 5.1 Input Signal & Power

Connector : FI-RE51S-HF (JAE)

PIN No.	Description		PIN No.	Description	
1	Vdd (12V)		26	Even LVDS Signal	
2	Vdd (12V)		27		RE[0]P
3	Vdd (12V)		28		RE[1]N
4	Vdd (12V)		29		RE[1]P
5	Vdd (12V)		30		RE[2]N
6	GND		31		RE[2]P
7	GND		32		GND
8	GND		33		RECLK-
9	GND		34		RECLK+
10	Odd LVDS Signal		35		GND
11			RO[0]N	36	RE[3]N
12			RO[0]P	37	RE[3]P
13			RO[1]N	38	No Connection
14			RO[1]P	39	No Connection
15			RO[2]N	40	GND
16			RO[2]P	41	No Connection
17			GND	42	No Connection
18			ROCLK-	43	No Connection
19			ROCLK+	44	No Connection
20	GND	45	No Connection		
21	RO[3]N	46	No Connection		
22	RO[3]P	47	No Connection		
23	No Connection		48	No Connection	
24	No Connection		49	No Connection	
25	GND		50	No Connection	
	Even LVDS	RE[0]N	51	No Connection	

Note(1) No Connection :These pins are only used for SAMSUNG internal purpose.

Note (2) Pin number starts from Right side



**Fig. Connector diagram**

- a. All GND pins should be connected together and also be connected to the LCD's metal chassis.
- b. All power input pins should be connected together.
- c. All N.C pins should be separated from other signal or power.

MODEL	LTI570HH-L01	Doc. No	05-000-G-070215	Page	14 / 28
-------	--------------	---------	-----------------	------	---------

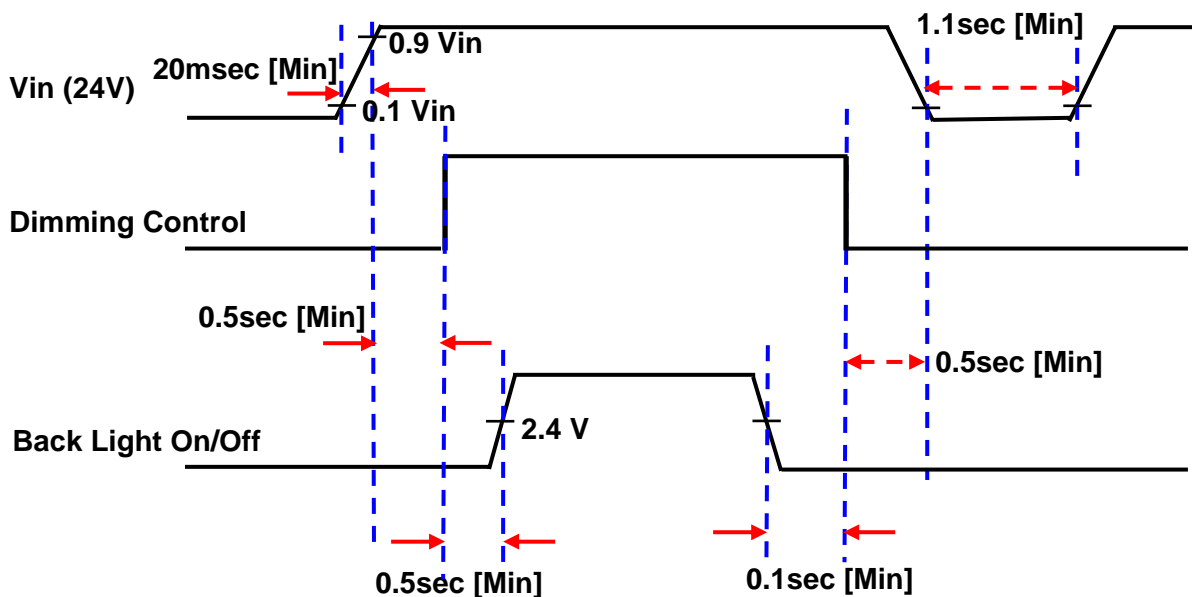
## 5.2 Inverter Input Pin Configuration

Connector : JST, S14B-PHA-SM-TB(LF)

Pin No.	Pin Configuration(FUNCTION)
1	Vin (24V)
2	Vin (24V)
3	Vin (24V)
4	Vin (24V)
5	Vin (24V)
6	GND
7	GND
8	GND
9	GND
10	GND
11	No Connection
12	Backlight On /Off [On: 2.4 ~ 5.5 V, Off: 0 ~ 0.8 V]
13	Internal PWM Dimming [0V:Min, 3.3V:Max]
14	External PWM Dimming [30%:Min, 100%:Max]

Note) External PWM Dimming → Pin 13 : 3.3V or Open, Pin 14 : External PWM Pulse  
 Internal PWM Dimming → Pin 13 : DC Voltage, Pin 14 :Open

## 5.3 Inverter Input Power Sequence



MODEL

LTI570HH-L01

Doc. No

05-000-G-070215

Page

15 / 28



### 5.4 LVDS Interface

- LVDS Receiver : Tcon (merged)
- Data Format (JEIDA & Normal)

Default LVDS Option : VESA

	LVDS pin	JEIDA -DATA	VESA -DATA
TxOUT/RxIN0	TxIN/RxOUT0	R2	R0
	TxIN/RxOUT1	R3	R1
	TxIN/RxOUT2	R4	R2
	TxIN/RxOUT3	R5	R3
	TxIN/RxOUT4	R6	R4
	TxIN/RxOUT6	R7	R5
	TxIN/RxOUT7	G2	G0
TxOUT/RxIN1	TxIN/RxOUT8	G3	G1
	TxIN/RxOUT9	G4	G2
	TxIN/RxOUT12	G5	G3
	TxIN/RxOUT13	G6	G4
	TxIN/RxOUT14	G7	G5
	TxIN/RxOUT15	B2	B0
	TxIN/RxOUT18	B3	B1
TxOUT/RxIN2	TxIN/RxOUT19	B4	B2
	TxIN/RxOUT20	B5	B3
	TxIN/RxOUT21	B6	B4
	TxIN/RxOUT22	B7	B5
	TxIN/RxOUT24	HSYNC	HSYNC
	TxIN/RxOUT25	VSYNC	VSYNC
	TxIN/RxOUT26	DEN	DEN
TxOUT/RxIN3	TxIN/RxOUT27	R0	R6
	TxIN/RxOUT5	R1	R7
	TxIN/RxOUT10	G0	G6
	TxIN/RxOUT11	G1	G7
	TxIN/RxOUT16	B0	B6
	TxIN/RxOUT17	B1	B7
	TxIN/RxOUT23	RESERVED	RESERVED

MODEL

LTI570HH-L01

Doc. No

05-000-G-070215

Page

16 / 28

## 5.5 Input Signals, Basic Display Colors and Gray Scale of Each Color

COLOR	DISPLAY (8bit)	DATA SIGNAL																								GRAY SCALE LEVEL
		RED								GREEN								BLUE								
		R0	R1	R2	R3	R4	R5	R6	R7	G0	G1	G2	G3	G4	G5	G6	G7	B0	B1	B2	B3	B4	B5	B6	B7	
BASIC COLOR	BLACK	0	0	0	0	0	0	0	0	0	0	0	0	0	0	0	0	0	0	0	0	0	0	0	0	-
	BLUE	0	0	0	0	0	0	0	0	0	0	0	0	0	0	0	0	1	1	1	1	1	1	1	1	-
	GREEN	0	0	0	0	0	0	0	0	1	1	1	1	1	1	1	1	0	0	0	0	0	0	0	0	-
	CYAN	0	0	0	0	0	0	0	0	1	1	1	1	1	1	1	1	1	1	1	1	1	1	1	1	-
	RED	1	1	1	1	1	1	1	1	0	0	0	0	0	0	0	0	0	0	0	0	0	0	0	0	-
	MAGENTA	1	1	1	1	1	1	1	1	0	0	0	0	0	0	0	0	1	1	1	1	1	1	1	1	-
	YELLOW	1	1	1	1	1	1	1	1	1	1	1	1	1	1	1	1	0	0	0	0	0	0	0	0	-
	WHITE	1	1	1	1	1	1	1	1	1	1	1	1	1	1	1	1	1	1	1	1	1	1	1	1	-
GRAY SCALE OF RED	BLACK	0	0	0	0	0	0	0	0	0	0	0	0	0	0	0	0	0	0	0	0	0	0	0	R0	
	DARK	1	0	0	0	0	0	0	0	0	0	0	0	0	0	0	0	0	0	0	0	0	0	0	R1	
		0	1	0	0	0	0	0	0	0	0	0	0	0	0	0	0	0	0	0	0	0	0	0	R2	
		:	:	:	:	:	:	:	:	:	:	:	:	:	:	:	:	:	:	:	:	:	:	:	R3~R252	
		:	:	:	:	:	:	:	:	:	:	:	:	:	:	:	:	:	:	:	:	:	:	:		
	LIGHT	1	0	1	1	1	1	1	1	0	0	0	0	0	0	0	0	0	0	0	0	0	0	0	R253	
		0	1	1	1	1	1	1	1	0	0	0	0	0	0	0	0	0	0	0	0	0	0	0	R254	
RED	1	1	1	1	1	1	1	1	0	0	0	0	0	0	0	0	0	0	0	0	0	0	0	R255		
GRAY SCALE OF GREEN	BLACK	0	0	0	0	0	0	0	0	0	0	0	0	0	0	0	0	0	0	0	0	0	0	0	G0	
	DARK	0	0	0	0	0	0	0	0	1	0	0	0	0	0	0	0	0	0	0	0	0	0	0	G1	
		0	0	0	0	0	0	0	0	0	1	0	0	0	0	0	0	0	0	0	0	0	0	0	G2	
		:	:	:	:	:	:	:	:	:	:	:	:	:	:	:	:	:	:	:	:	:	:	:	G3~G252	
		:	:	:	:	:	:	:	:	:	:	:	:	:	:	:	:	:	:	:	:	:	:	:		
	LIGHT	0	0	0	0	0	0	0	0	1	0	1	1	1	1	1	1	0	0	0	0	0	0	0	G253	
		0	0	0	0	0	0	0	0	0	1	1	1	1	1	1	1	0	0	0	0	0	0	0	G254	
GREEN	0	0	0	0	0	0	0	0	1	1	1	1	1	1	1	1	0	0	0	0	0	0	0	G255		
GRAY SCALE OF BLUE	BLACK	0	0	0	0	0	0	0	0	0	0	0	0	0	0	0	0	0	0	0	0	0	0	0	B0	
	DARK	0	0	0	0	0	0	0	0	0	0	0	0	0	0	0	0	1	0	0	0	0	0	0	B1	
		0	0	0	0	0	0	0	0	0	0	0	0	0	0	0	0	1	0	0	0	0	0	0	B2	
		:	:	:	:	:	:	:	:	:	:	:	:	:	:	:	:	:	:	:	:	:	:	:	B3~B252	
		:	:	:	:	:	:	:	:	:	:	:	:	:	:	:	:	:	:	:	:	:	:	:		
	LIGHT	0	0	0	0	0	0	0	0	0	0	0	0	0	0	0	0	1	0	1	1	1	1	1	B253	
		0	0	0	0	0	0	0	0	0	0	0	0	0	0	0	0	0	1	1	1	1	1	1	B254	
BLUE	0	0	0	0	0	0	0	0	0	0	0	0	0	0	0	0	1	1	1	1	1	1	1	B255		

Note) Definition of Gray :

Rn : Red Gray, Gn : Green Gray, Bn : Blue Gray (n = Gray level)

Input Signal : 0 = Low level voltage, 1 = High level voltage

MODEL

LTI570HH-L01

Doc. No

05-000-G-070215

Page

17 / 28

## 6. Interface Timing

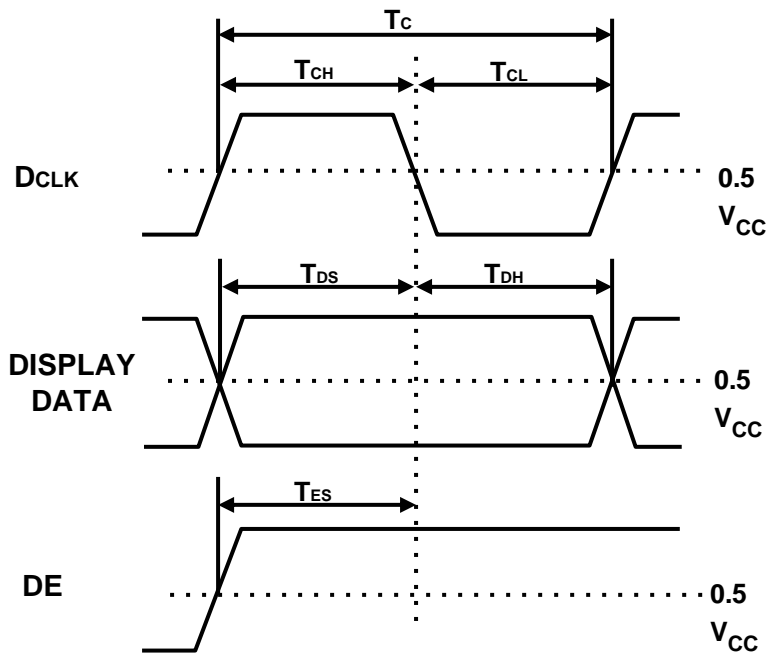
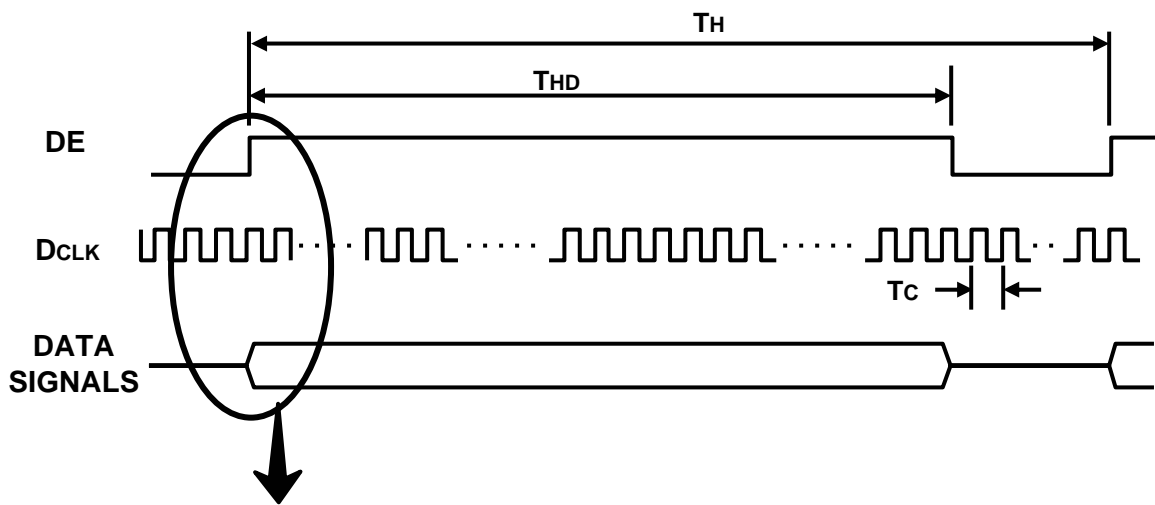
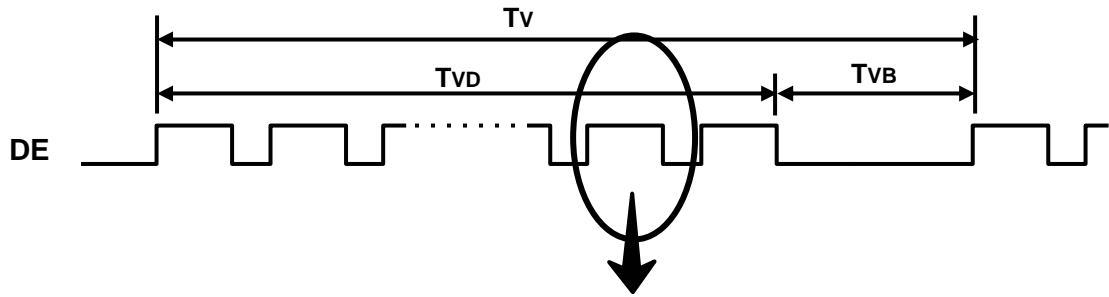
### 6.1 Timing Parameters (DE only mode)

Signal	Item	Symbol	Min.	Typ.	Max.	Unit	Note
Clock	Frequency	$1/T_C$	120.0	148.5	154.0	MHz	-
Hsync		$F_H$	60.0	67.5	70.0	KHz	-
Vsync		$F_V$	50	60	62	Hz	-
Vertical Display Term	Active Display Period	$T_{VD}$	-	1080	-	Lines	-
	Vertical Total	$T_V$	1092	1125	1158	Lines	-
Horizontal Display Term	Active Display Period	$T_{HD}$	-	1920	-	Clocks	-
	Horizontal Total	$T_H$	2016	2200	2400	Clocks	-

Note) This product is DE only mode. The input of Hsync & Vsync signal does not have an effect on normal operation.

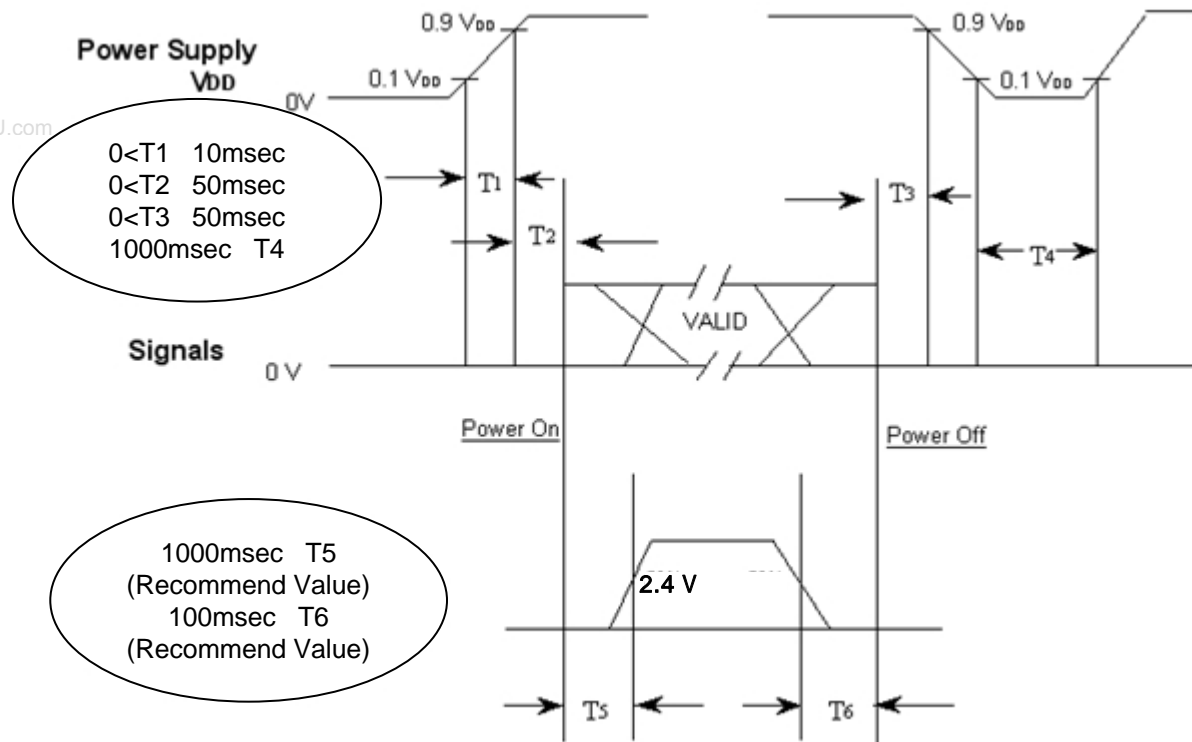
Test Point : TTL control signal and CLK at LVDS Tx input terminal in system

## 6.2 Timing diagrams of interface signal (DE only mode)



### 6.3 Power ON/OFF Sequence

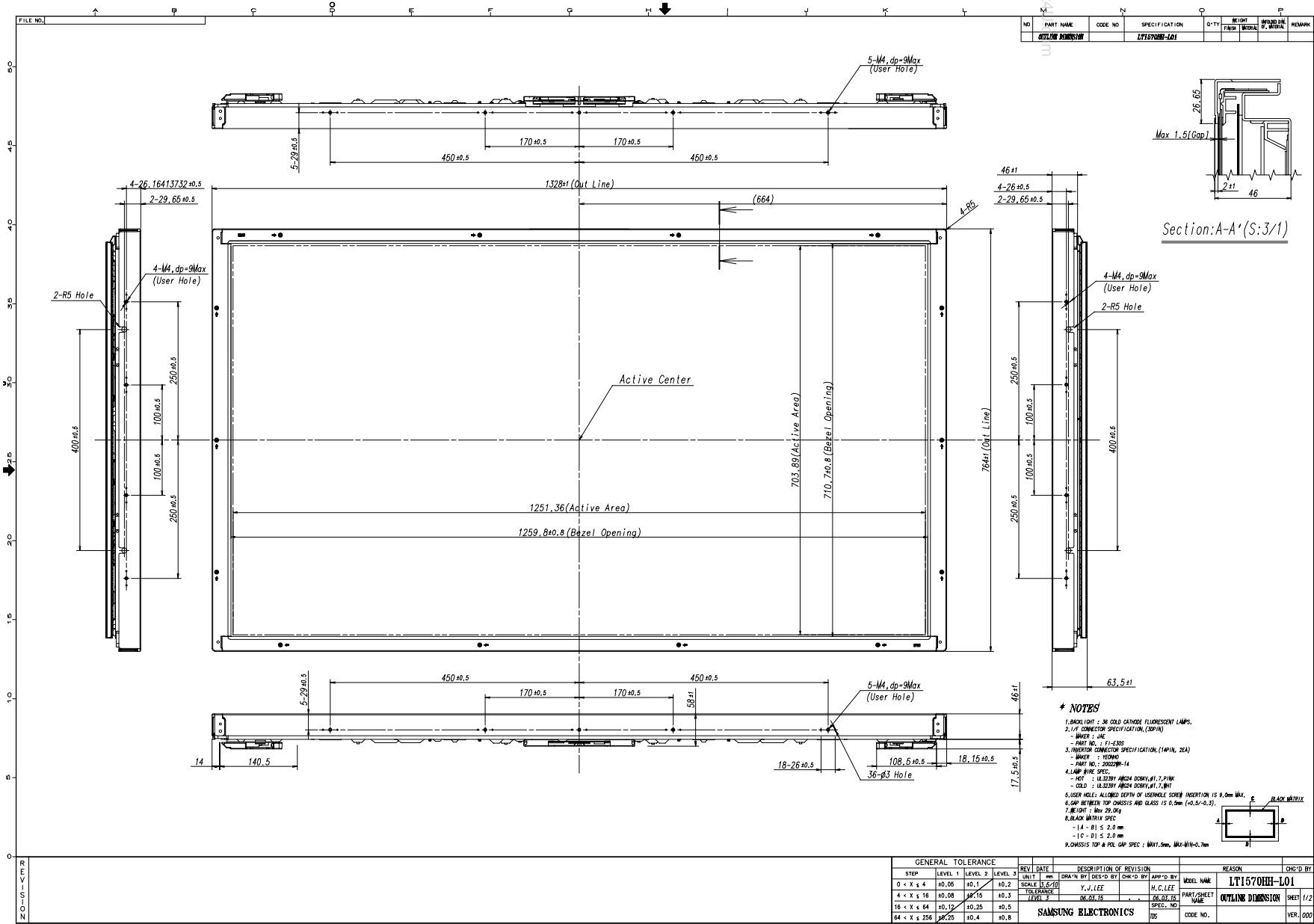
To prevent a latch-up or DC operation of the LCD Module, the power on/off sequence should be as the diagram below.



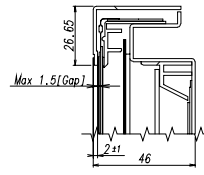
- $T_1$  :  $V_{DD}$  rising time from 10% to 90%
- $T_2$  : The time from  $V_{DD}$  to valid data at power ON.
- $T_3$  : The time from valid data off to  $V_{DD}$  off at power Off.
- $T_4$  :  $V_{DD}$  off time for Windows restart
- $T_5$  : The time from valid data to B/L enable at power ON.
- $T_6$  : The time from valid data off to B/L disable at power Off.

- The supply voltage of the external system for the Module input should be the same as the definition of  $V_{DD}$ .
- Apply the lamp voltage within the LCD operation range. When the back light turns on before the LCD operation or the LCD turns off before the back light turns off, the display may momentarily show abnormal screen.
- In case of  $V_{DD}$  = off level, please keep the level of input signals low or keep a high impedance.
- $T_4$  should be measured after the Module has been fully discharged between power off and on period.
- Interface signal should not be kept at high impedance when the power is on.

# 7. Outline Dimension (Front View)



NO	PART NAME	CODE NO	SPECIFICATION	QTY	HEIGHT	WARRANTY	REMARK
	OUTLINE DIMENSION		LTI570HH-L01				

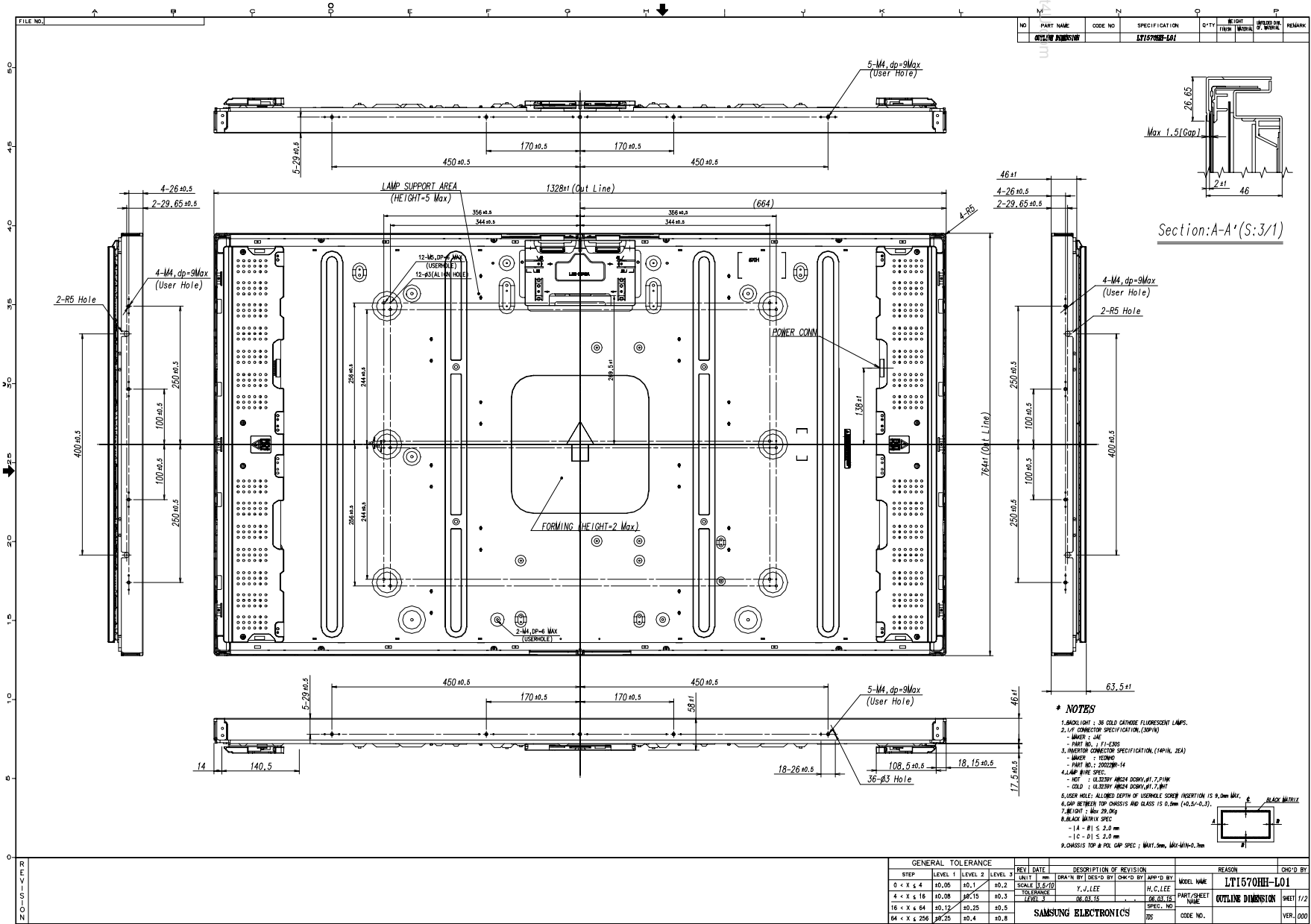


- \* NOTES**
- BACKLIGHT : 36 COLD CATHODE FLUORESCENT LAMPS.
  - 1/4" DIMENSION SPECIFICATION (30P/4)
  - WAVE : 1.4μ
  - PART NO. : F1-E300
  - INVERTER CONNECTOR SPECIFICATION (14PIN, 2EA)
  - WATER : TERNOM
  - PART NO. : 200220M-14
  - LAMP WAVE SPEC.
  - HOT : 10.32BY ARCHA DOWRY #1, 7, PINK
  - COLD : 10.32BY ARCHA DOWRY #1, 8, BWT
  - USER HOLE: ALLOWED DEPTH OF USERHOLE SCREW INSERTION IS 9.0mm MAX.
  - GAP BETWEEN TOP ONDASIS AND GLASS IS 0.5mm (+0.5/-0.3).
  - HEIGHT : Max 29.0mm
  - BLACK MATRIX SPEC
  - BLACK MATRIX SPEC
  - 1A - B1 ≤ 2.0 mm
  - 1C - D1 ≤ 2.0 mm
  - ONDASIS TOP & PNL GAP SPEC : MAX1.5mm, MAX-MIN=0.7mm

GENERAL TOLERANCE				REV	DATE	DESCRIPTION OF REVISION		REASON		CHK'D BY
STEP	LEVEL 1	LEVEL 2	LEVEL 3	UNIT	mm	DRWN BY	DES-0 BY	CHK-D BY	APP'D BY	MODEL NAME
0 < X < 4	±0.00	±0.1	±0.2	SCALE	1:1.0	Y.J.LEE	H.C.LEE			LTI570HH-L01
4 < X < 10	±0.00	±0.10	±0.3	TOLERANCE						
10 < X < 84	±0.10	±0.25	±0.5							
84 < X < 256	±0.20	±0.4	±0.8							

www.DataSheet4U.com

# 7. Outline Dimension (Rear View)



- \* NOTES**
1. BACKLIGHT : 38 COLD CATHODE FLUORESCENT LAMPS.
  2. I/F CONNECTOR SPECIFICATION (SOPIN)
  3. USER HOLE : 4-M
  4. PART NO. : FT-5305
  5. LUMINOUS CONNECTOR SPECIFICATION (CAPITAL 2EA)
  6. USER HOLE : YELLOW
  7. PART NO. : 200208-14
  8. LAMP # IN SPEC.
  9. NOT : 0.325MM AREA DOWN, #1.7 PINK
  10. GOLD : 0.325MM AREA DOWN, #1.7 PINK
  11. USER HOLE : ALLOED DEPTH OF USERHOLE SCREEN INSERTION IS 0.0mm MAX.
  12. GAP BETWEEN TOP CHASSIS AND GLASS IS 0.0mm (+0.5/-0.3).
  13. HEIGHT : Max 29.5mm
  14. BLACK MATRIX SPEC
  15. -1A - B1 ≤ 2.0 mm
  16. -1C - D1 ≤ 2.0 mm
  17. CHASSIS TOP @ PER GAP SPEC ; MAX1.5mm, MAX-MIN=0.7mm

www.DataSheet4U.com

## 8. Reliability Test

Item	Test condition	Quantity
HTOL	50 , 500hr determination	8EA
LTOL	0 , 500hr determination	4EA
HTS	70 , 500hr determination	4EA
LTS	-30 , 500hr determination	4EA
THB	40 / 95%RH, 500hr determination	4EA
WHTS	60 / 75%RH, 500hr determination	4EA
T/C	-20 ~ 60 , 100cycle determination	4EA
TSS	0 ~ 50 , 10Cycle determination	4EA
ESD (non-operation)	C D M : $\pm 10$ kV, 150pF/330 , 9Point, 3times/Point	3EA
ESD(operation)	contact : $\pm 8$ kV , 150pF/330 , 100Point, 1 time/Point non-contact : $\pm 15$ kV, 200pF/100 , 100Point, 1 time/Point	6EA
Input Con. ESD	contact : $\pm 2$ kV, 150pF/330, Input Con.Pin, 3 times/Pin	3EA
Power On/Off	30sec (on) / 30sec(off) : 12,000 times	4EA
Vibration	10 ~ 300Hz/1.5G/10minSR, XYZ, 30min/axis	3EA
Shock	30G, 11msec, $\pm$ XYZ 1time/axis	3EA
Pallet Vibration	1.05Grms, 5 ~ 200Hz, Random, 30min / $\pm$ XYZ axis	1Pallet (8EA)
Pallet Drop	20cm, 4Edge, 1Face (Bottom)	1Pallet (8EA)

### [ Result Evaluation Criteria]

Under the display quality test conditions with normal operation state, these should be no change which may affect practical display functions.

- \* HTOL/ LTOL : High/Low Temperature Operating Life
- \*\* THB : Temperature Humidity Bias
- \*\*\* HTS/LTS : High/Low Temperature Storage
- \*\*\*\* WHTS : Wet High Temperature Storage



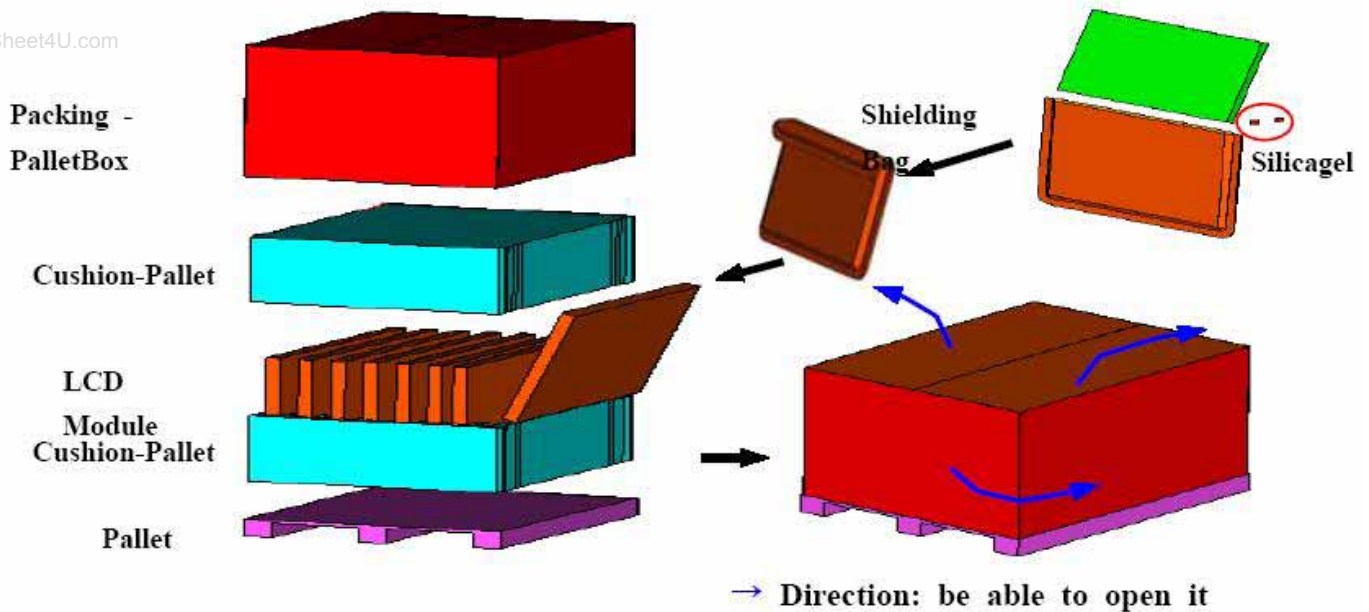
## 9. PACKING

### 9.1 CARTON (Internal Package)

#### (1) Packing Form

Corrugated fiberboard box and corrugated cardboard as shock absorber

#### (2) Packing Method



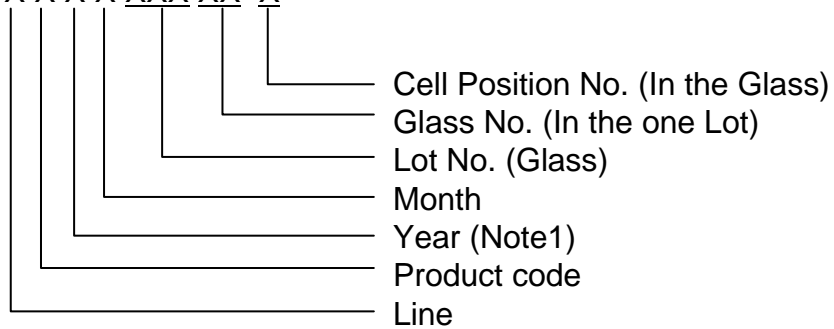
### 9.2 Packing Specification

Item	Specification	Remark
LCD Packing	8ea / (Packing-Pallet Box)	1. 244.8Kg / LCD (8ea) 2. 16 Kg / Cushion-pallet (2ea) 3. 10.5 Kg / Packing-Pallet Box (1ea) 4. Cushion-pallet Material : EPS 5. Packing-Pallet Box Material : DW4
Pallet	1Box / Pallet	1. Pallet weight = 10kg
Packing Direction	Vertical	
Total Pallet Size	H x V x height	1475mm(H) x 1150mm(V) x 995mm(height)
Total Pallet Weight	281.3 Kg	Pallet(10kg) + Module (30.6*8=244.8kg) + Cushion (up + bottom=16kg) + Pallet-Box(10.5kg)

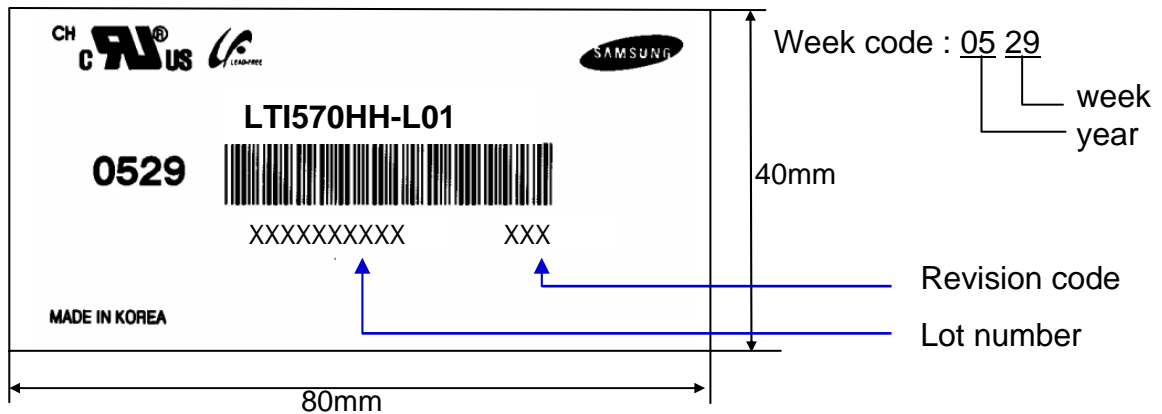
## 10. MARKING & OTHERS

A nameplate bearing followed by is affixed to a shipped product at the specified location on each product.

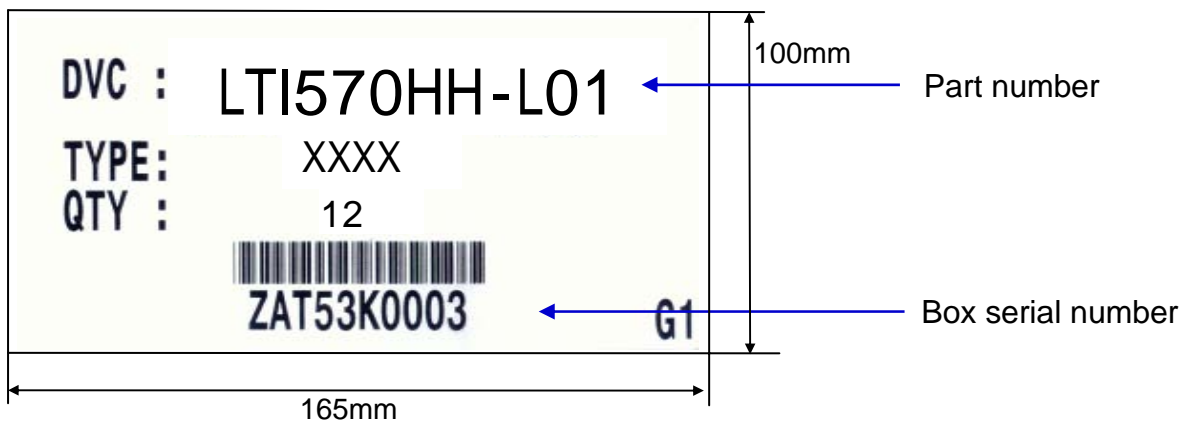
- (1) Part number : LTI570HH-L01
- (2) Revision: Three letters
- (3) Lot number : X X X X XXX XX X



### (4) Nameplate Indication



### (5) Packing box attach



### (6) Others

- 1. After service part

Lamps cannot be replaced because of the narrow bezel structure.

MODEL	LTI570HH-L01	Doc. No	05-000-G-070215	Page	25 / 28
-------	--------------	---------	-----------------	------	---------

## 11. General Precautions

### 11.1 Handling

- (a) When the Module is assembled, it should be attached to the system firmly using all mounting holes. Be careful not to twist and bend the Module.
- (b) Because the inverter use high voltage, it should be disconnected from power before it is assembled or disassembled.
- (c) Refrain from strong mechanical shock and / or any force to the Module.  
In addition to damage, this may cause improper operation or damage to the Module and CCFT back light.
- (d) Note that polarizers are very fragile and could be damage easily.  
Do not press or scratch the surface harder than a HB pencil lead.
- (e) Wipe off water droplets or oil immediately. If you leave the droplets for a long time, staining or discoloration may occur.
- (f) If the surface of the polarizer is dirty, clean it using absorbent cotton or soft cloth.
- (g) Desirable cleaners are water, IPA(Isopropyl Alcohol) or Hexane.  
Do not use Ketone type materials(ex. Acetone), Ethyl alcohol, Toluene, Ethyl acid or Methyl chloride. It might permanent damage to the polarizer due to chemical reaction.
- (h) If the liquid crystal material leaks from the panel, it should be kept away from the eyes or mouth . In case of contact with hands, legs or clothes, it must be washed away with soap thoroughly.
- (i) Protect the Module from static, or the CMOS Gate Array IC would be damaged.
- (j) Use finger-stalls with soft gloves in order to keep display clean during the incoming inspection and assembly process.
- (k) Do not disassemble the Module.
- (l) Do not pull or fold the lamp wire.
- (m) Do not adjust the variable resistor located on the Module.
- (n) Protection film for polarizer on the Module should be slowly peeled off just before use so that the electrostatic charge can be minimized.
- (o) Pins of I/F connector should not be touched directly with bare hands.

MODEL	LTI570HH-L01	Doc. No	05-000-G-070215	Page	26 / 28
-------	--------------	---------	-----------------	------	---------

## 11.2 Storage

- (a) Do not leave the Module in high temperature, and high humidity for a long time. It is highly recommended to store the Module with temperature from 0 to 35 and relative humidity of less than 70%.
- (b) Do not store the TFT-LCD Module in direct sunlight.
- (c) The Module should be stored in a dark place. It is prohibited to apply sunlight or fluorescent light in storing.

## 11.3 Operation

- (a) Do not connect or disconnect the Module in the "Power On" condition.
- (b) Power supply should always be turned on/off by the "Power on/off sequence"
- (c) Module has high frequency circuits. Sufficient suppression to the electromagnetic interference should be done by system manufacturers. Grounding and shielding methods may be important to minimize the interference.
- (d) The cable between the back light connector and its inverter power supply should be connected directly with a minimized length. A longer cable between the back light and the inverter may cause lower luminance of lamp(CCFT) and may require higher startup voltage(Vs).

## 11.4 Operation Condition Guide

- (a) The LCD product should be operated under normal conditions. Normal condition is defined as below;
  - Temperature :  $20 \pm 15$
  - Humidity :  $55 \pm 20\%$
  - Display pattern : continually changing pattern (Not stationary)
- (b) If the product will be used in extreme conditions such as high temperature, humidity, display patterns or operation time etc., It is strongly recommended to contact SEC for Application engineering advice. Otherwise, its reliability and function may not be guaranteed. Extreme conditions are commonly found at Airports, Transit Stations, Banks, Stock market, and Controlling systems.

MODEL	LTI570HH-L01	Doc. No	05-000-G-070215	Page	27 / 28
-------	--------------	---------	-----------------	------	---------

## 11.5 Others

- (a) Ultra-violet ray filter is necessary for outdoor operation.
- (b) Avoid condensation of water. It may result in improper operation or disconnection of electrode.
- (c) Do not exceed the absolute maximum rating value. ( supply voltage variation, input voltage variation, variation in part contents and environmental temperature, and so on)  
Otherwise the Module may be damaged.
- (d) If the Module keeps displaying the same pattern for a long period of time, the image may be "sticked" to the screen.  
To avoid image sticking, it is recommended to use a screen saver.
- (e) This Module has its circuitry PCB's on the rear side and should be handled carefully in order not to be stressed.
- (f) Please contact SEC in advance when you display the same pattern for a long time.

MODEL	LTI570HH-L01	Doc. No	05-000-G-070215	Page	28 / 28
-------	--------------	---------	-----------------	------	---------

Our company network supports you worldwide with offices in Germany, Turkey, Great Britain and the USA. For more information please contact:

## DISTEC

### **Distec GmbH**

Augsburger Str. 2  
82110 Germering  
Germany  
Phone: +49 (0)89 / 89 43 63-0  
Fax: +49 (0)89 / 89 43 63-131  
E-Mail: [info@distec.de](mailto:info@distec.de)  
Internet: [www.distec.de](http://www.distec.de)



DATA DISPLAY TEKNOLOJİ

### **Data Display Teknoloji Elektronik San Ve Diş Tic A.Ş.**

Kustepe Leylak Sok.  
Nursanlar Is Merkezi  
Kat. 6 No: 21  
Sisli / Istanbul  
Turkey  
Phone: +90 (0)212 / 356 04 20  
Fax: +90 (0)212 / 356 04 25  
E-Mail: [info@datadisplay.com.tr](mailto:info@datadisplay.com.tr)  
Internet: [www.datadisplay.com.tr](http://www.datadisplay.com.tr)



DISPLAY TECHNOLOGY

### **Display Technology Ltd.**

A2 Spectrum Business Centre  
Anthonys Way, Medway City Estate  
Rochester, Kent, ME2 4NP  
United Kingdom  
Phone: + 44 (0)1634 / 29 55 55  
Fax: + 44 (0)1634 / 29 55 43  
E-Mail: [info@displaytechnology.co.uk](mailto:info@displaytechnology.co.uk)  
Internet: [www.displaytechnology.co.uk](http://www.displaytechnology.co.uk)



### **Apollo Display Technologies, Corp.**

85 Remington Blvd.  
Ronkonkoma, NY 11779  
United States of America  
Phone: +1 631 / 580-43 60  
Fax: +1 631 / 580-43 70  
E-Mail: [info@apollodisplays.com](mailto:info@apollodisplays.com)  
Internet: [www.apollodisplays.com](http://www.apollodisplays.com)