



TO : Panasonic
DATE : Sep. 9th, 2011

SAMSUNG TFT-LCD

MODEL NO. : LTN154AT14-L01

NOTE : Extension code [-L01]
→ LTN154AT14-L01
Surface type [Anti-Glare]

The information described in this SPEC is can not be changed without SEC's permission.

APPROVED BY :

H. W. Park

PREPARED BY : LCD Application Engineering Group, Marketing Team

SAMSUNG ELECTRONICS CO., LTD.



SEC Secret

CONTENTS

Revision History	----- (3)
General Description	----- (5)
1. Absolute Maximum Ratings	----- (6)
1.1 Absolute Ratings of environment	
1.2 Electrical Absolute Ratings	
2. Optical Characteristics	----- (8)
3. Electrical Characteristics	----- (12)
3.1 TFT LCD Module	
3.2 Backlight Unit	
4. Block Diagram	----- (15)
4.1 TFT LCD Module	
4.2 Backlight Unit	
5. Input Terminal Pin Assignment	----- (16)
5.1 Input Signal & Power	
5.2 LVDS Interface	
5.3 Backlight Unit	
5.4 Timing Diagrams of LVDS For Transmitting	
5.5 Input Signals, Basic Display Colors and Gray Scale of Each Color.	
5.6 Pixel format	
6. Interface Timing	----- (21)
6.1 Timing Parameters(DE Mode)	
6.2 Timing Diagrams of interface Signal (DE Mode)	
6.3 Power ON/OFF Sequence	
7. Outline Dimension	----- (23)
8. Product Markings and Others	----- (25)
9. General Precautions	----- (26)
10. EDID	----- (28)

SEC Secret

GENERAL DESCRIPTION

DESCRIPTION

LTN154AT14-L01 is a color active matrix TFT (Thin Film Transistor) liquid crystal display (LCD) that uses amorphous silicon TFT as a switching devices. This model is composed of a TFT LCD panel, a driver circuit and a backlight system. The resolution of a 15.4" contains 1,280 x 800 pixels and can display up to 262,144 colors. 6 O'clock direction is the Optimum viewing angle.

FEATURES

- High contrast ratio, high aperture structure
- 1280 x 800 pixels resolution
- Low power consumption
- Fast Response
- DE (Data enable) only mode
- 3.3V LVDS Interface
- Onboard EEDID chip
- LED BLU
- Color gamut 45%
- Green product (RoHS comply product)

APPLICATIONS

- Notebook PC and desktop monitors
- If the usage of this product is not for PC application, but for others, please contact SEC

GENERAL INFORMATION

Item	Specification	Unit	Note
Display area	331.2(H) X 207.0(V) (15.4" diagonal)	mm	
Driver element	a-si TFT active matrix		
Display colors	262,144		
Number of pixel	1280 x 800 (16 : 10, Wide XGA)	pixel	
Pixel arrangement	RGB vertical stripe		
Pixel pitch	0.25875(H) x 0.25875(V)	mm	
Display Mode	Normally white		
Surface treatment	HAZE 25, HARD-COATING 3H, AG		

SEC Secret

Mechanical Information

Item	Min.	Typ.	Max.	Unit	Note	
Module size	Horizontal (H)	343.5	344.0	344.5	mm	
	Vertical (V)	221.6	222.1	222.6	mm	
	Depth (D)	-	6.2	6.5	mm	(1)
Weight	-	540	560	g		

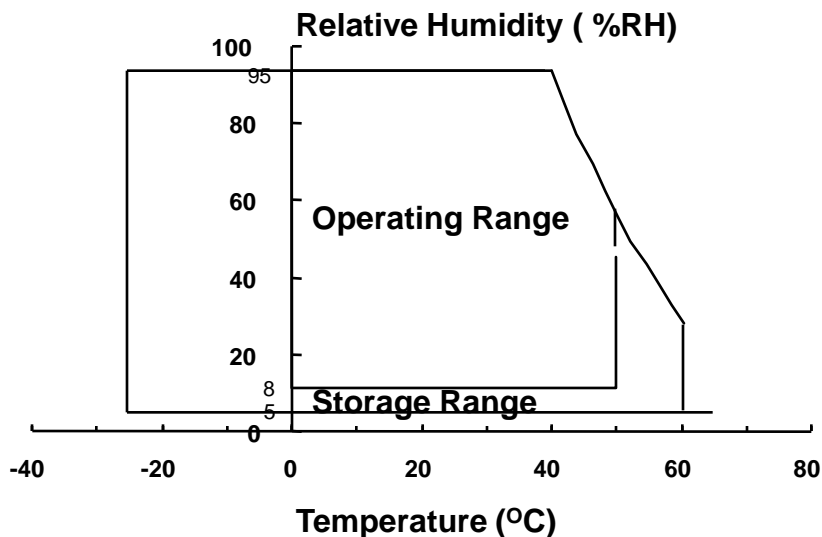
Note (1) Measurement condition of outline dimension
 . Equipment : Venire Calipers
 . Push Force : 500g · f (minimum)

1. ABSOLUTE MAXIMUM RATINGS

1.1 ENVIRONMENTAL ABSOLUTE RATINGS

Item	Symbol	Min.	Max.	Unit	Note
Storage temperate	T _{STG}	-20	60	°C	(1)
Operating temperate (Temperature of glass surface)	T _{OPR}	0	50	°C	(1)
Shock (non-operating)	Snop	-	210	G	(2),(5)
			50		(3),(5)
Vibration (non-operating)	Vnop	-	2.41	G	(4),(5)

Note (1) Temperature and relative humidity range are shown in the figure below.
 95 % RH Max. (40 °C ≥ Ta)
 Maximum wet - bulb temperature at 39 °C or less. (Ta > 40 °C) No condensation.
 (2) 3ms, half sine wave, one time for ±X,±Y,±Z.
 (3) 18ms, Trapezoidal wave, one time for ±X,±Y,±Z.
 (4) 5~500 Hz, Random vibration, 30 min for X,Y,Z.
 (5) At testing Vibration and Shock, the fixture in holding the Module to be tested have to be hard and rigid enough so that the Module would not be twisted or bent by the fixture.



SEC Secret

1.2 ELECTRICAL ABSOLUTE RATINGS

(1) TFT LCD MODULE

 $V_{DD} = 3.3V$, $V_{SS} = GND = 0V$

Item	Symbol	Min.	Max.	Unit	Note
Power Supply Voltage	V_{DD}	$V_{DD} - 0.3$	$V_{DD} + 0.3$	V	(1)
Logic Input Voltage	V_{IN}	$V_{DD} - 0.3$	$V_{DD} + 0.3$	V	(1)

NOTE (1) Within T_a (25 ± 2 °C)

(2) BACK-LIGHT UNIT

 $T_a = 25 \pm 2$ °C

Item	Symbol	Min	Typ.	Max.	Unit	Note
LED Current	I_L	-	18	-	mA	(1)
LED Voltage	F_V	-	3.2	-	V	(1)

NOTE (1) Permanent damage to the device may occur if maximum values are exceeded.
Functional operation should be restricted to the conditions described under Normal Operating Conditions.

2. OPTICAL CHARACTERISTICS

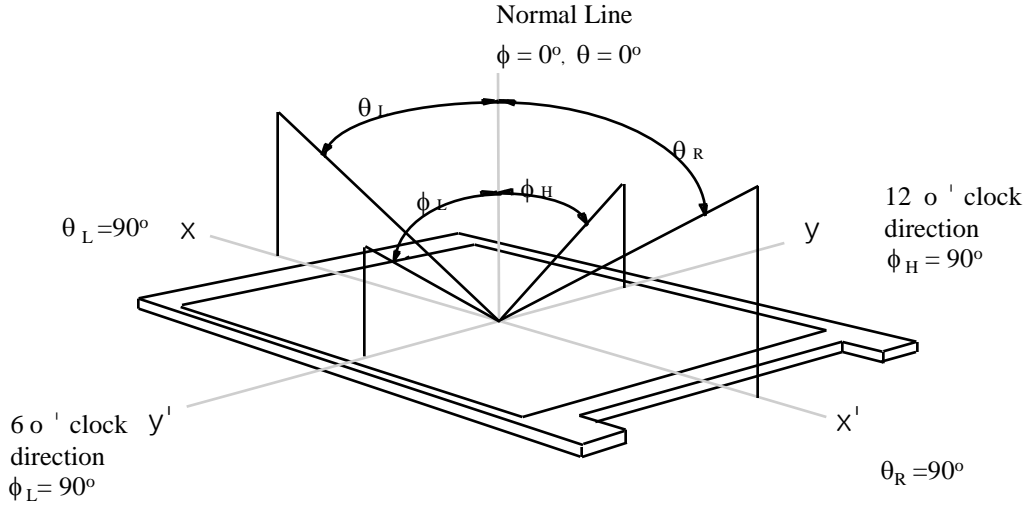
The following items are measured under stable conditions. The optical characteristics should be measured in a dark room or equivalent state with the methods shown in Note (5).
Measuring equipment : TOPCON SR-3

* Ta = 25±2°C , Vcc=3.3V, fv= 60Hz, fdCLK=71.11MHz, IL= 20mArms

Item	Symbol	Condition	Min.	Typ.	Max	Unit	Note	
Contrast Ratio (5 Points)	CR	Normal Viewing Angle $\phi = 0$ $\theta = 0$	300	400	-	-	(1), (2), (5)	
Response Time at 25°C	Rising		TR+Tf	-	16	25	msec	(1), (3)
	Falling							
Average Luminance of White (5 points)	YL,AVE			175	200	-	cd/m ²	(1), (4)
Color Chromaticity (CIE)	Red	R _X	- 0.03	0.590	+ 0.03	-	(1), (5) SR-3	
		R _Y		0.340				
	Green	G _X		0.320				
		G _Y		0.550				
	Blue	B _X		0.152				
		B _Y		0.130				
	White	W _X		0.313				
		W _Y		0.329				
Viewing Angle	Hor.	θ_L	-	45	-	Degrees	(1), (5) SR-3	
		θ_H	-	45	-			
	Ver.	ϕ_H	-	15	-			
		ϕ_L	-	30	-			
Color gamut			45%		%			
13 Points White Variation	δ_L		-	-	1.8	-	(6)	

SEC Secret

Note 1) Definition of Viewing Angle : Viewing angle range ($10 \leq C/R$ at center point)

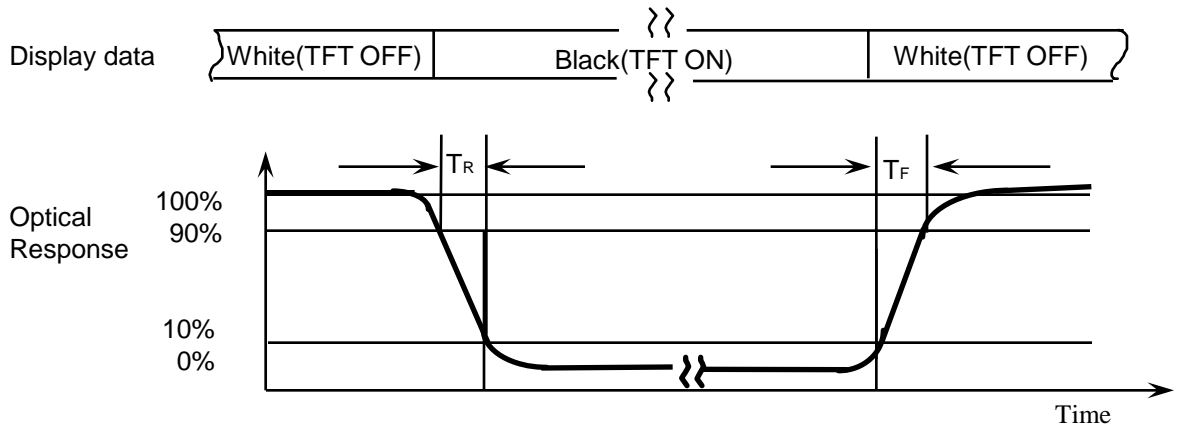


Note 2) Definition of Contrast Ratio (CR) : Ratio of gray max (Gmax) ,gray min (Gmin) at 5 points(4, 5, 7, 9, 10)

$$CR = \frac{CR(4) + CR(5) + CR(7) + CR(9) + CR(10)}{5}$$

POINTS : (4) , (5) , (7) , (9) , (10) at FIGURE OF NOTE 6)

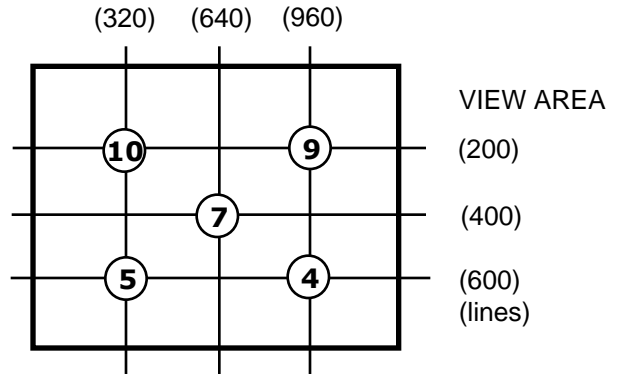
Note 3) Definition of Response time : Sum of T_R, T_F



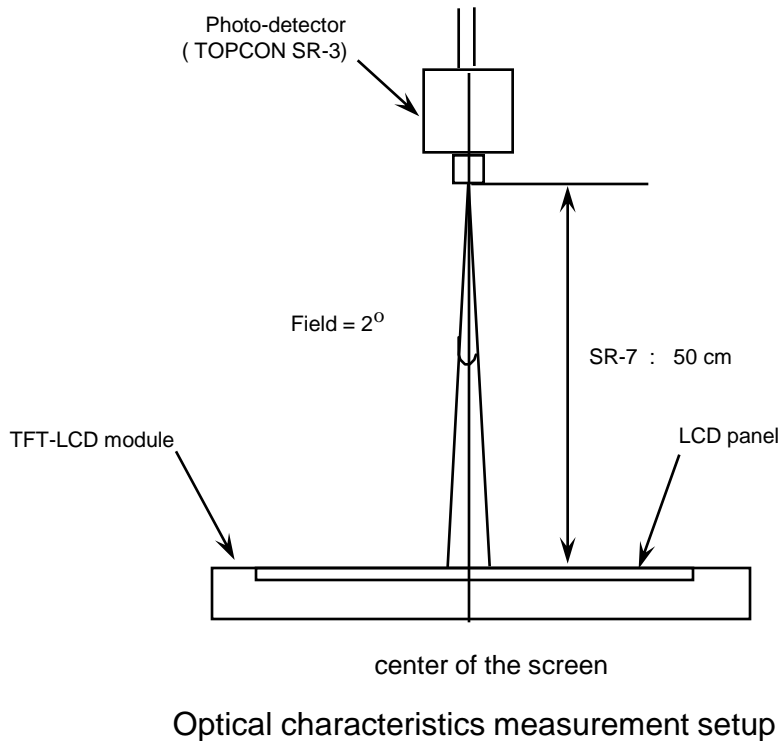
Note 4) Definition of Luminance of White : measure the luminance of white at 5 points.

Average Luminance of White ($Y_{L,AVE}$)

$$Y_{L,AVE} = \frac{Y_{L4} + Y_{L5} + Y_{L7} + Y_{L9} + Y_{L10}}{5}$$



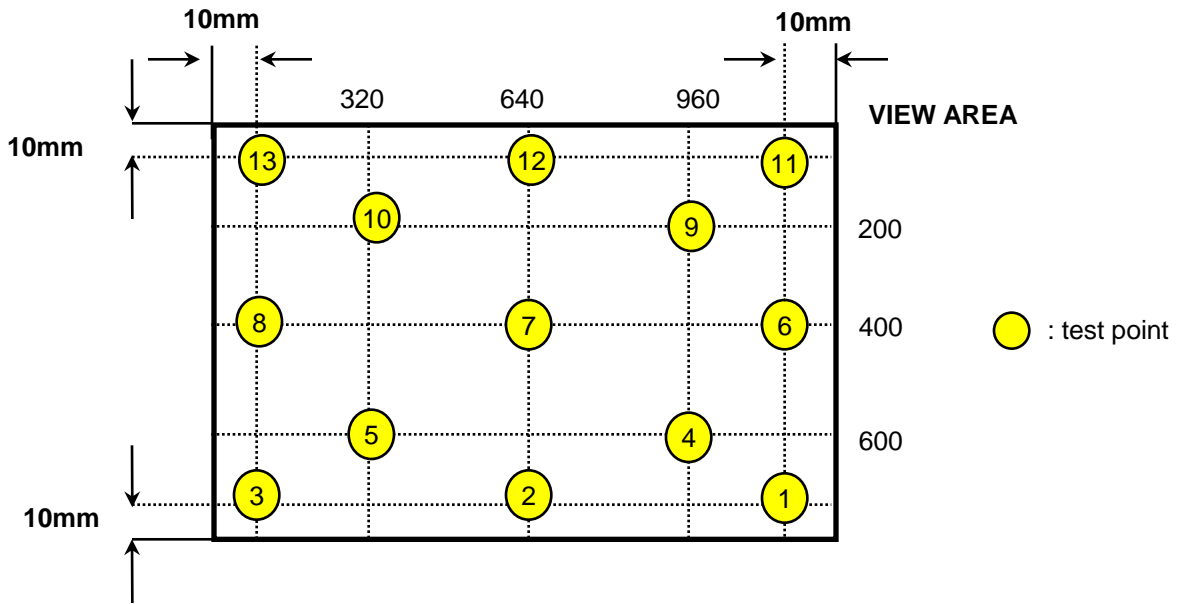
Note 5) After stabilizing and leaving the panel alone at a given temperature for 30 min , the measurement should be executed. Measurement should be executed in a stable, windless, and dark room. 30 min after lighting the back-light. This should be measured in the center of screen.
 LED current :20mA
 Environment condition : $T_a = 25^{\circ}\text{C} \pm 2^{\circ}\text{C}$



Note 6) Definition of 13 points white variation, CR variation(C_{VER}) [① ~ ⑬]

$$\text{13 points white variation} = \frac{\text{Minimum luminance of 13 points}}{\text{Maximum luminance of 13 points}}$$

Meet ISO13406-2 Luminance uniformity



3. ELECTRICAL CHARACTERISTICS

Aproval

3.1 TFT LCD MODULE

Ta=25 ± 2 °C

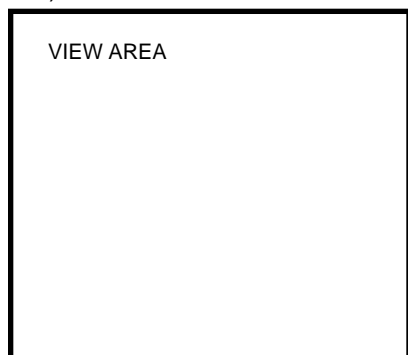
Item	Symbol	Min.	Typ.	Max.	Unit	Note	
Voltage of Power Supply	V _{DD}	3.0	3.3	3.6	V		
Differential Input Voltage for LVDS Receiver Threshold	High	V _{IH}	-	-	+100	mV	V _{CM} = +1.2V
	Low	V _{IL}	-100	-	-	mV	
Vsync Frequency	f _v	-	60	-	Hz		
Hsync Frequency	f _H	-	48.96	-	KHz		
Main Frequency	f _{DCLK}	-	71.1	-	MHz		
Rush Current	I _{RUSH}	-	-	1.5	A	(4)	
Current of Power Supply	White	I _{DD}	-	300	-	mA	(2),(3)*a
	Mosaic		-	350	-	mA	(2),(3)*b
	WinXP Pattern		-	350	-	mA	(2),(3)*c
	Max Pattern	-	450	550	mA	(2),(3)*c	

Note (1) Display data pins and timing signal pins should be connected.(GND=0V)

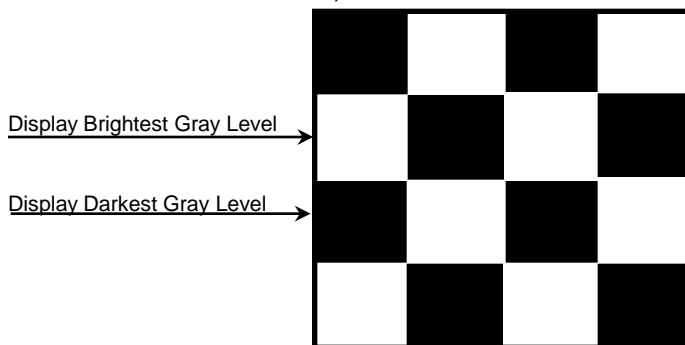
(2) f_v=60Hz, f_{DCLK} = 71.1 MHz, V_{DD} = 3.3V , DC Current.

(3) Power dissipation pattern

*a) White Pattern



*b) Mosaic Pattern

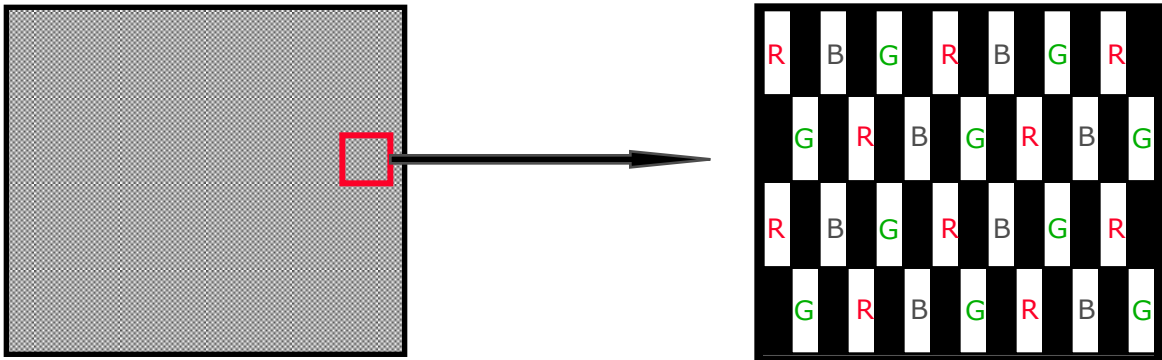


SEC Secret

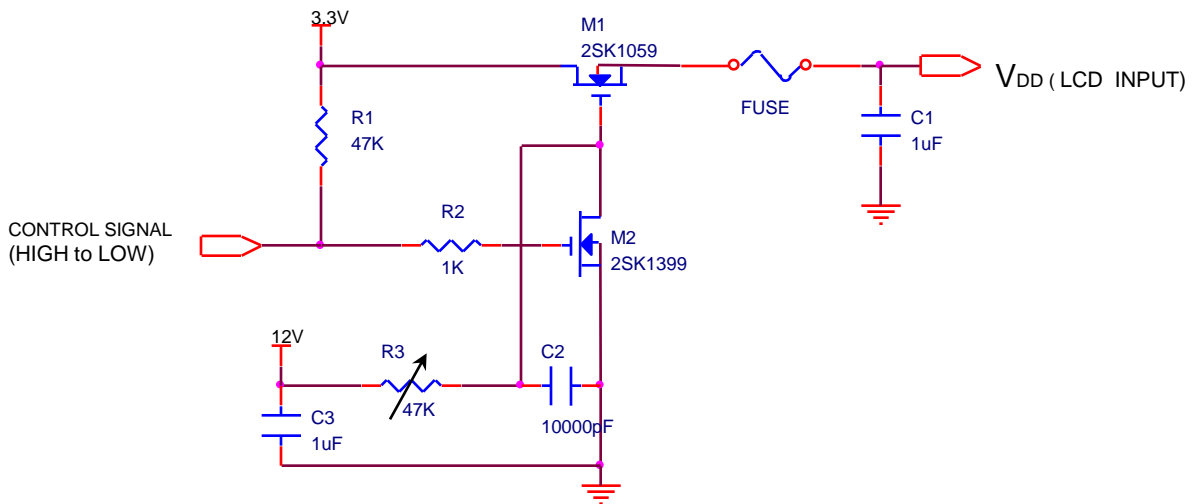
*c) WinXP Pattern



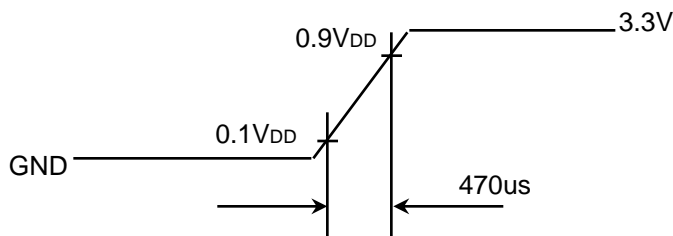
*d) 1dot Inversion Pattern



4) Rush current measurement condition



V_{DD} rising time is 470us



SEC Secret

3.2 BACK-LIGHT UNIT

Ta= 25 ± 2 °C

Item	Symbol	Min.	Typ.	Max.	Unit	Note
LED Forward Current	I _F	18	20	22	mA	
LED Forward Voltage	V _F	3.0	3.2	3.4	V	
LED Array Voltage	V _P	27.0	28.8	30.6	V	V _F X 9LEDs
Power Consumption	P	2.76	3.46	4.0	W	I _F X V _F X 54LEDs 6 parallel, 9 serial
Operating Life Time	Hr	10,000	-	-	Hr	(1)

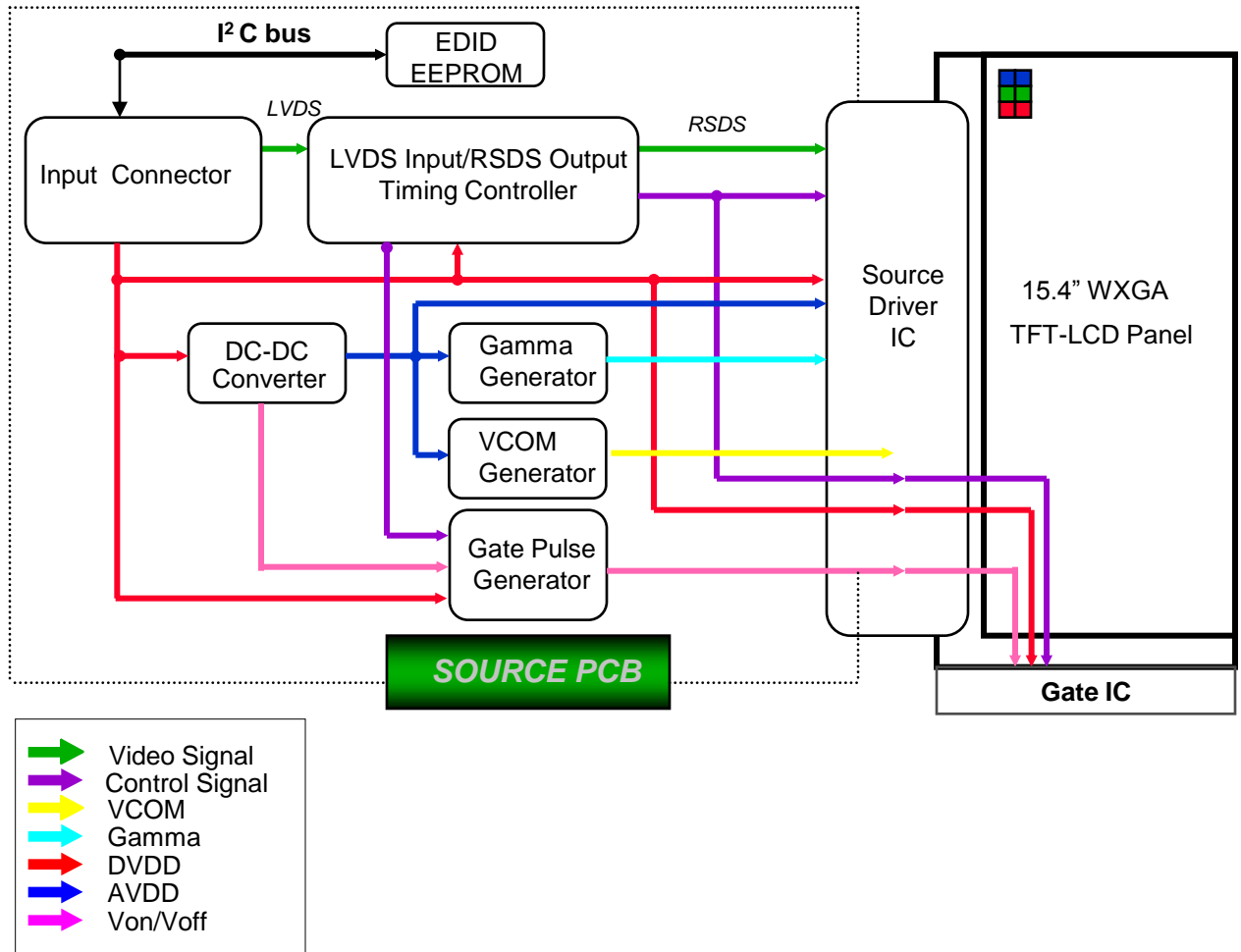
Note (1) Life time (Hr) of LEDs can be defined as the time in which it continues to operate under the condition Ta= 25 ± 2 °C and I_F = 20.0 mA until one of the following event occurs.

- When the brightness becomes 50% or lower than the original
- LCD module MTBF

Ta= 25 ± 2 °C

4. BLOCK DIAGRAM

4.1 TFT LCD Module



5. INPUT TERMINAL PIN ASSIGNMENT

5.1. Input Signal & Power

Input Connector : UJU IS100-L30R-C15

No.	Symbol	Function	Remark
1	GND	GROUND	
2	VDD	POWER SUPPLY, +3.3V	
3	VDD	POWER SUPPLY, +3.3V	
4	V _{EDID}	DDC +3.3V POWER	
5	BIST_CON	BIST Mode Control Pin	
6	CLK _{EDID}	DDC CLOCK	
7	DATA _{EDID}	DDC DATA	
8	ORX0-	Negative LVDS Differential Data Input For Odd Pixel	
9	ORX0+	Positive LVDS Differential Data Input For Odd Pixel	
10	GND	GROUND	
11	ORX1-	Negative LVDS Differential Data Input For Odd Pixel	
12	ORX1+	Positive LVDS Differential Data Input For Odd Pixel	
13	GND	GROUND	
14	ORX2-	Negative LVDS Differential Data Input For Odd Pixel	
15	ORX2+	Positive LVDS Differential Data Input For Odd Pixel	
16	GND	GROUND	
17	ORXC-	Negative LVDS Differential Clock Input For Odd Pixel	
18	ORXC+	Positive LVDS Differential Clock Input For Odd Pixel	
19	GND	GROUND	
20	ERX0-	NC	
21	ERX0+	NC	
22	GND	NC	
23	ERX1-	NC	
24	ERX1+	NC	
25	GND	NC	
26	ERX2-	NC	
27	ERX2+	NC	
28	GND	NC	
29	ERXC-	NC	
30	ERXC+	NC	

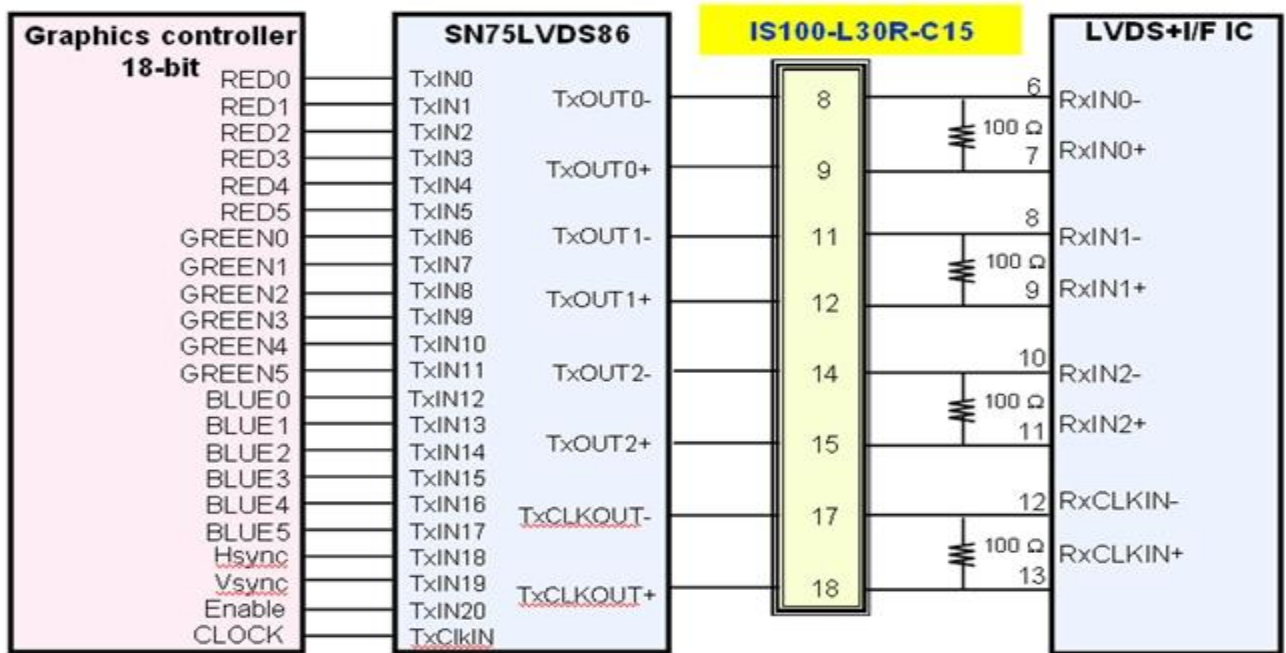
SEC Secret

5.2 LVDS Transmitter : Transmitter SN75LVDS86 or Compatible

Pin No.	Name	RGB Signal	Pin No.	Name	RGB Signal
44	TxIN0	R0	12	TxIN11	G5
45	TxIN1	R1	13	TxIN12	B0
47	TxIN2	R2	15	TxIN13	B1
48	TxIN3	R3	16	TxIN14	B2
1	TxIN4	R4	18	TxIN15	B3
3	TxIN5	R5	19	TxIN16	B4
4	TxIN6	G0	20	TxIN17	B5
6	TxIN7	G1	22	TxIN18	Hsync
7	TxIN8	G2	23	TxIN19	Vsync
9	TxIN9	G3	25	TxIN20	DE
10	TxIN10	G4	26	TxCLK IN	Clock

FLAT LINK INTERFACE

LVDS INTERFACE

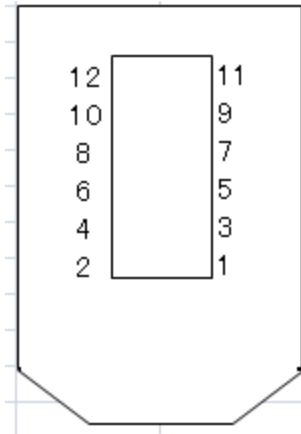
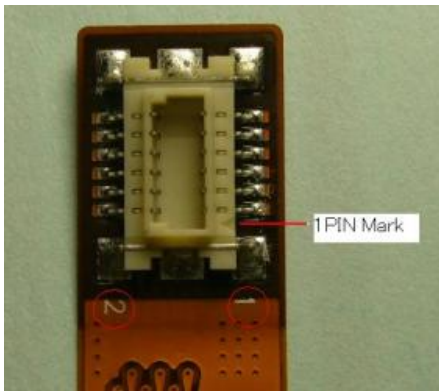


Note : The LCD Module uses a 100ohm resistor between positive and negative lines of each receiver input.

SEC Secret

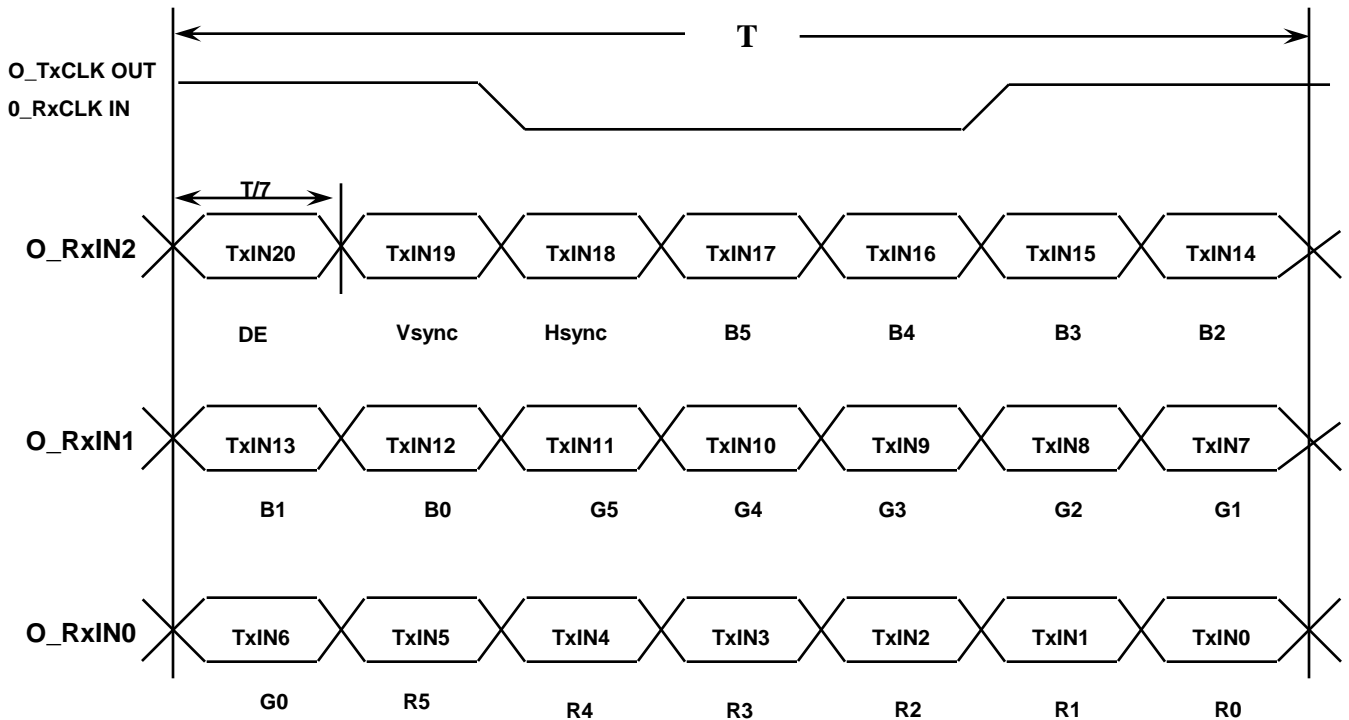
5.3 BACK LIGHT UNIT (FPC PIN)

PIN.NO	1	2	3	4	5	6
SIGNAL	PWR	FB1	PWR	FB2	PWR	FB3
PIN.NO	7	8	9	10	11	12
SIGNAL	NC	FB4	NC	FB5	NC	FB6



5.4 Timing Diagrams of LVDS For Transmission

LVDS Receiver : Integrated T-CON



SEC Secret

5.5 Input Signals, Basic Display Colors and Gray Scale of Each Color

Aproval

Color	Display	Data Signal																		Gray Scale Level
		Red						Green						Blue						
		R0	R1	R2	R3	R4	R5	G0	G1	G2	G3	G4	G5	B0	B1	B2	B3	B4	B5	
Basic Colors	Black	0	0	0	0	0	0	0	0	0	0	0	0	0	0	0	0	0	0	-
	Blue	0	0	0	0	0	0	0	0	0	0	0	0	1	1	1	1	1	1	-
	Green	0	0	0	0	0	0	1	1	1	1	1	1	0	0	0	0	0	0	-
	Cyan	0	0	0	0	0	0	1	1	1	1	1	1	1	1	1	1	1	1	-
	Red	1	1	1	1	1	1	0	0	0	0	0	0	0	0	0	0	0	0	-
	Magenta	1	1	1	1	1	1	0	0	0	0	0	0	1	1	1	1	1	1	-
	Yellow	1	1	1	1	1	1	1	1	1	1	1	1	0	0	0	0	0	0	-
	White	1	1	1	1	1	1	1	1	1	1	1	1	1	1	1	1	1	1	-
Gray Scale Of Red	Black	0	0	0	0	0	0	0	0	0	0	0	0	0	0	0	0	0	0	R0
	Dark	1	0	0	0	0	0	0	0	0	0	0	0	0	0	0	0	0	0	R1
	↑	0	1	0	0	0	0	0	0	0	0	0	0	0	0	0	0	0	0	R2
	:	:	:	:	:	:	:	:	:	:	:	:	:	:	:	:	:	:	:	R3~R60
	:	:	:	:	:	:	:	:	:	:	:	:	:	:	:	:	:	:	:	
	↓	1	0	1	1	1	1	0	0	0	0	0	0	0	0	0	0	0	0	R61
	Light	0	1	1	1	1	1	0	0	0	0	0	0	0	0	0	0	0	0	R62
	Red	1	1	1	1	1	1	0	0	0	0	0	0	0	0	0	0	0	0	R63
Gray Scale Of Green	Black	0	0	0	0	0	0	0	0	0	0	0	0	0	0	0	0	0	0	G0
	Dark	0	0	0	0	0	0	1	0	0	0	0	0	0	0	0	0	0	0	G1
	↑	0	0	0	0	0	0	0	1	0	0	0	0	0	0	0	0	0	0	G2
	:	:	:	:	:	:	:	:	:	:	:	:	:	:	:	:	:	:	:	G3~G60
	:	:	:	:	:	:	:	:	:	:	:	:	:	:	:	:	:	:	:	
	↓	0	0	0	0	0	0	1	0	1	1	1	1	0	0	0	0	0	0	G61
	Light	0	0	0	0	0	0	0	1	1	1	1	1	0	0	0	0	0	0	G62
	Green	0	0	0	0	0	0	1	1	1	1	1	1	0	0	0	0	0	0	G63
Gray Scale Of Blue	Black	0	0	0	0	0	0	0	0	0	0	0	0	0	0	0	0	0	0	B0
	Dark	0	0	0	0	0	0	0	0	0	0	0	0	1	0	0	0	0	0	B1
	↑	0	0	0	0	0	0	0	0	0	0	0	0	0	1	0	0	0	0	B2
	:	:	:	:	:	:	:	:	:	:	:	:	:	:	:	:	:	:	:	B3~B60
	:	:	:	:	:	:	:	:	:	:	:	:	:	:	:	:	:	:	:	
	↓	0	0	0	0	0	0	0	0	0	0	0	0	1	0	1	1	1	1	B61
	Light	0	0	0	0	0	0	0	0	0	0	0	0	0	1	1	1	1	1	B62
	Blue	0	0	0	0	0	0	0	0	0	0	0	0	1	1	1	1	1	1	B63

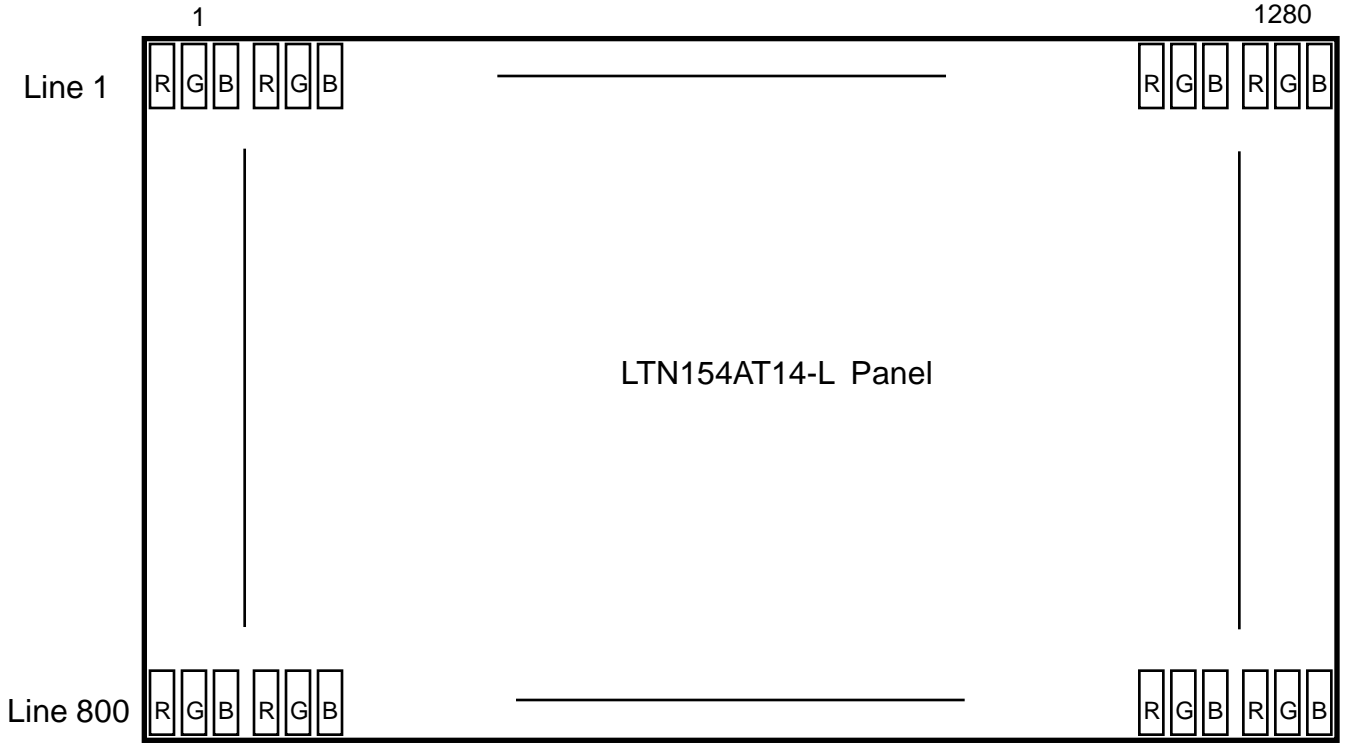
Note 1) Definition of gray :

Rn: Red gray, Gn: Green gray, Bn: Blue gray (n=gray level)

Note 2) Input signal: 0 =Low level voltage, 1=High level voltage

SEC Secret

5.6 Pixel Format in the display



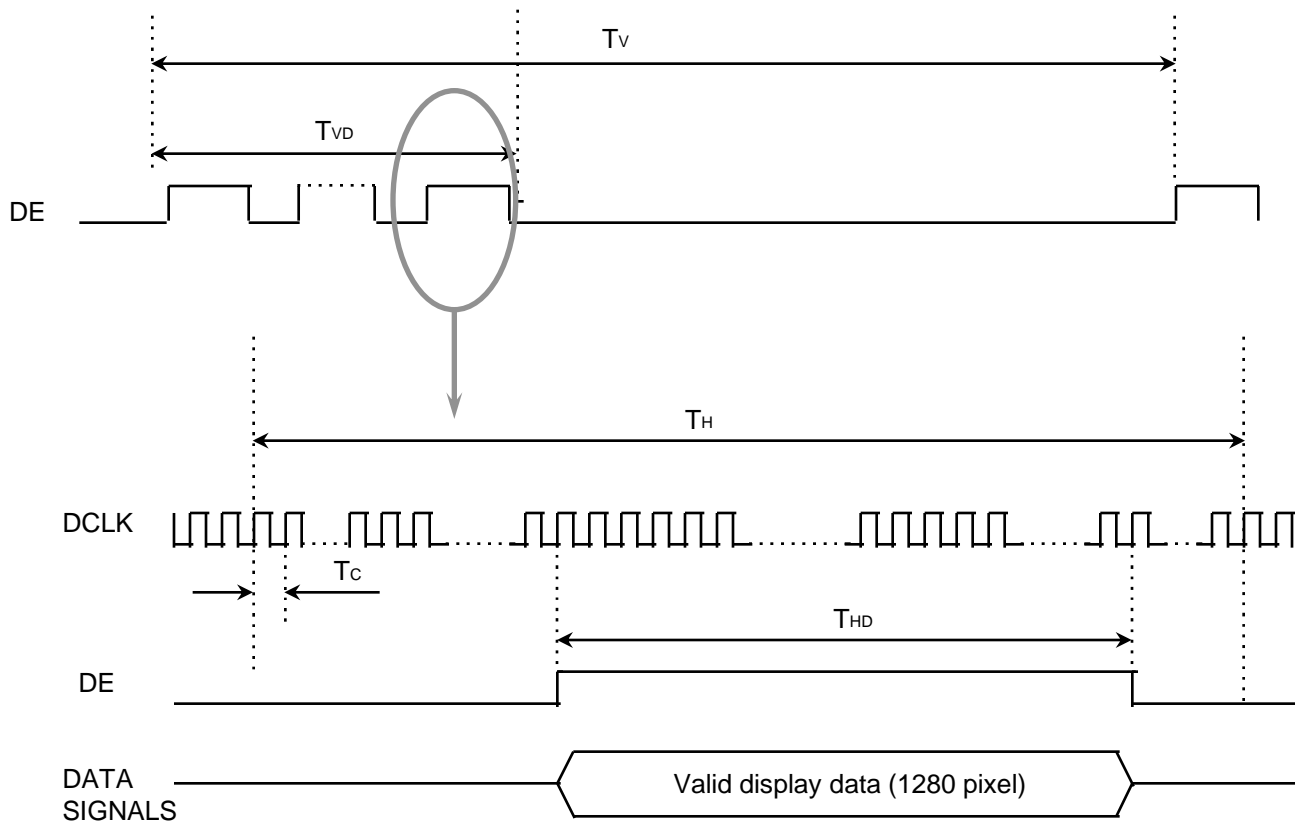
SEC Secret

6. INTERFACE TIMING

6.1 Timing Parameters (DE Mode)

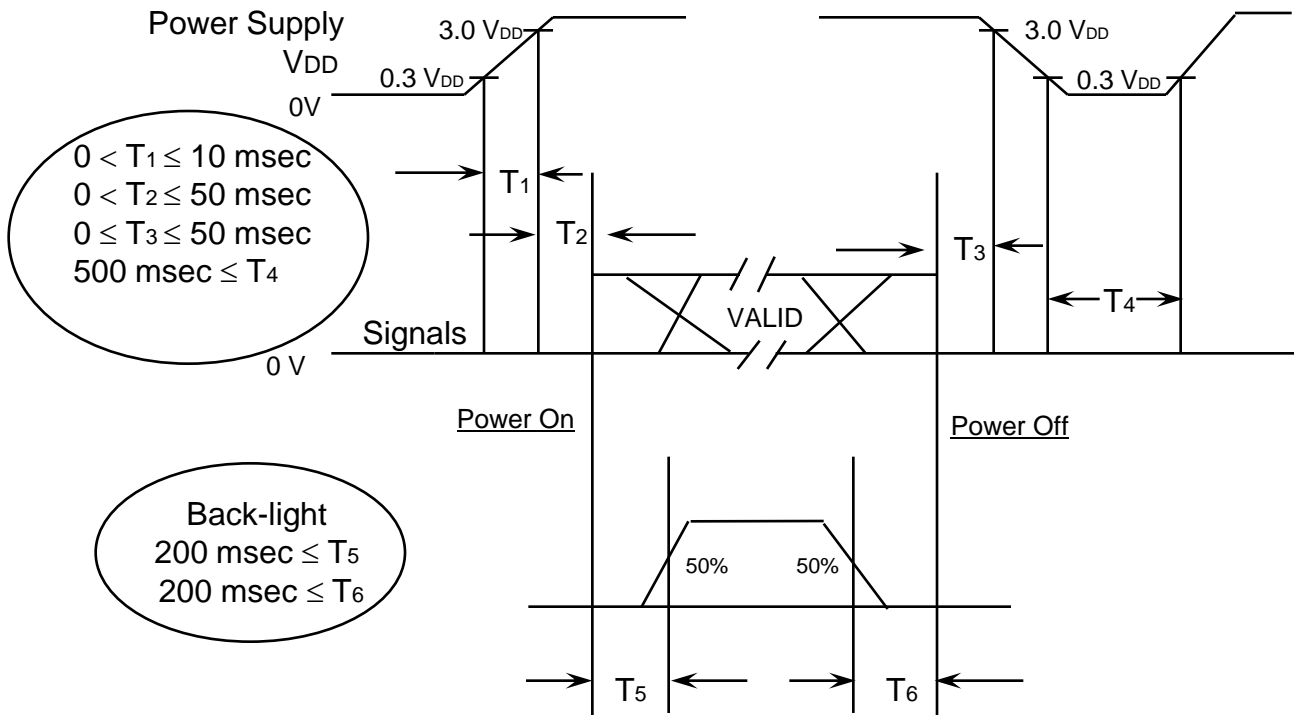
Signal	Item	Symbol	Min.	Typ.	Max.	Unit	Note
Frame Frequency	Cycle	TV	-	816	-	Lines	-
Vertical Active Display Term	Display Period	TVD	-	800	-	Lines	-
One Line Scanning Time	Cycle	TH	-	1408	-	Clocks	-
Horizontal Active Display Term	Display Period	THD	-	1280	-	Clocks	-

6.2 Timing diagrams of interface signal



6.3 Power ON/OFF Sequence

: To prevent a latch-up or DC operation of the LCD module, the power on/off sequence shall be as shown below.



Power ON/OFF Sequence

- T1 : Vdd rising time from 10% to 90%
- T2 : The time from Vdd to valid data at power ON.
- T3 : The time from valid data off to Vdd off at power Off.
- T4 : Vdd off time for Windows restart
- T5 : The time from valid data to B/L enable at power ON.
- T6 : The time from valid data off to B/L disable at power Off.
- T7 : Vdd falling time from 90% to 10%

NOTE.

- (1) The supply voltage of the external system for the module input should be the same as the definition of VDD.
- (2) Apply the lamp voltage within the LCD operation range. When the backlight turns on before the LCD operation or the LCD turns off before the backlight turns off, the display may momentarily become white.
- (3) In case of VDD = off level, please keep the level of input signals on the low or keep a high impedance.
- (4) T4 should be measured after the module has been fully discharged between power off and on period.
- (5) Interface signal shall not be kept at high impedance when the power is on.

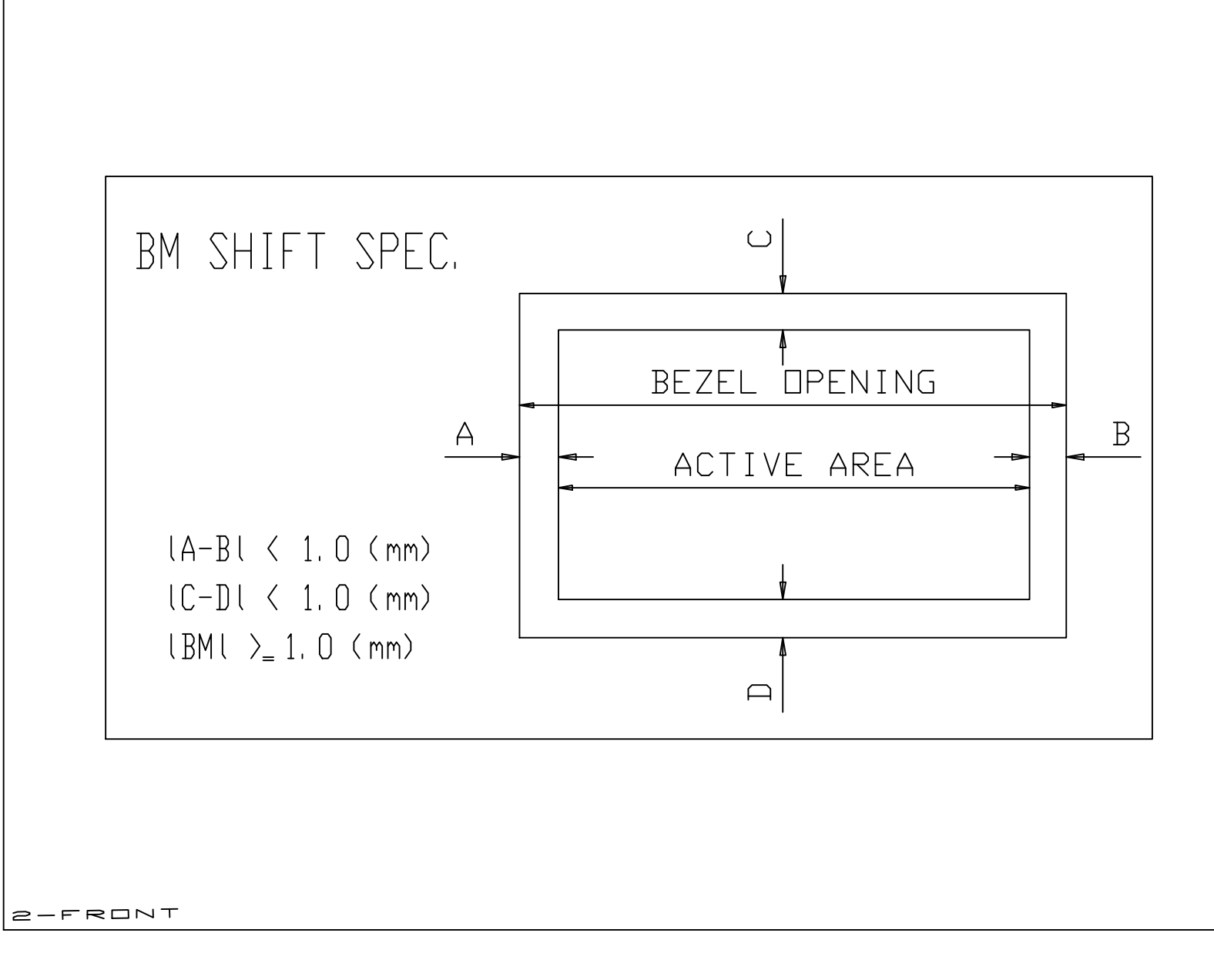
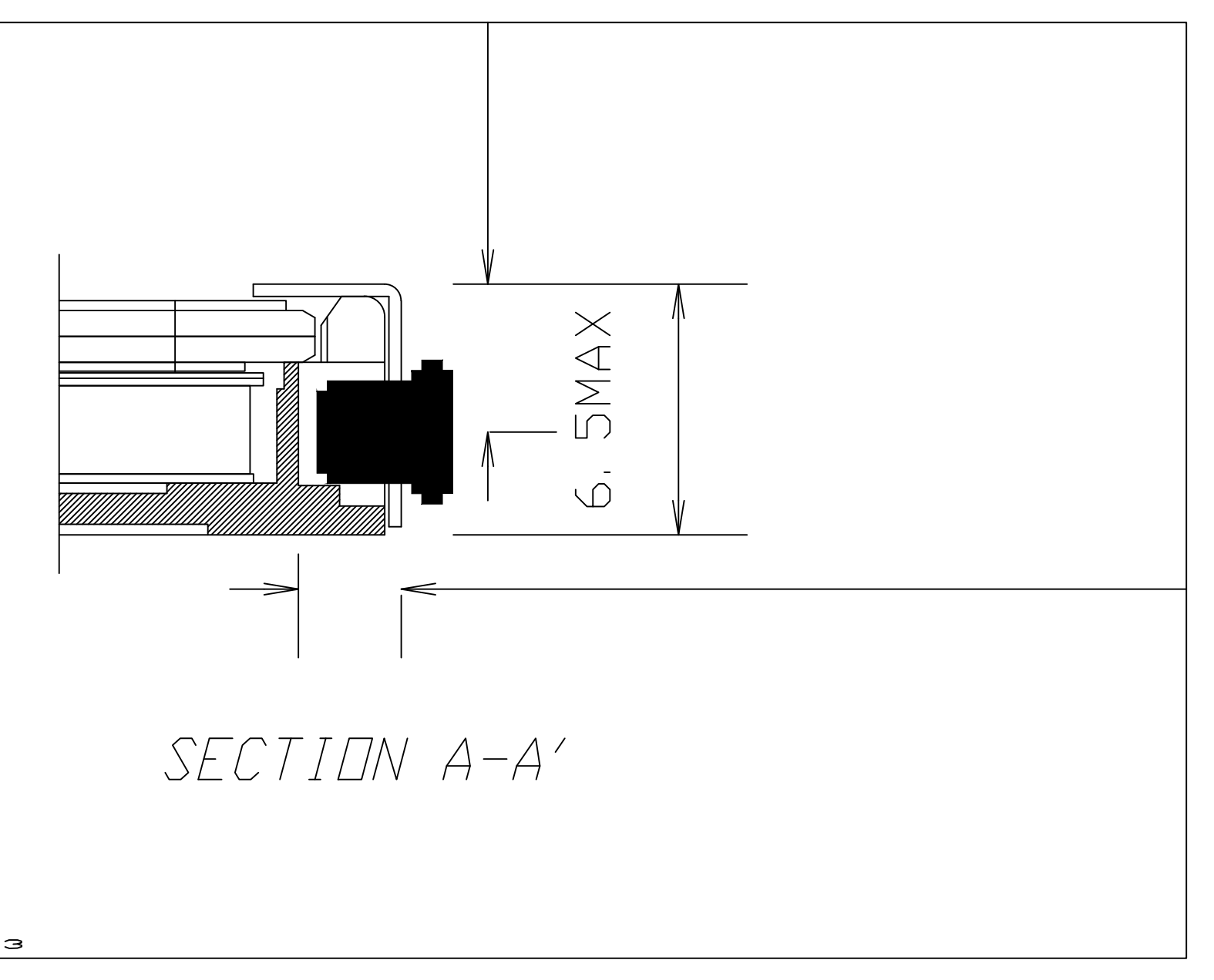
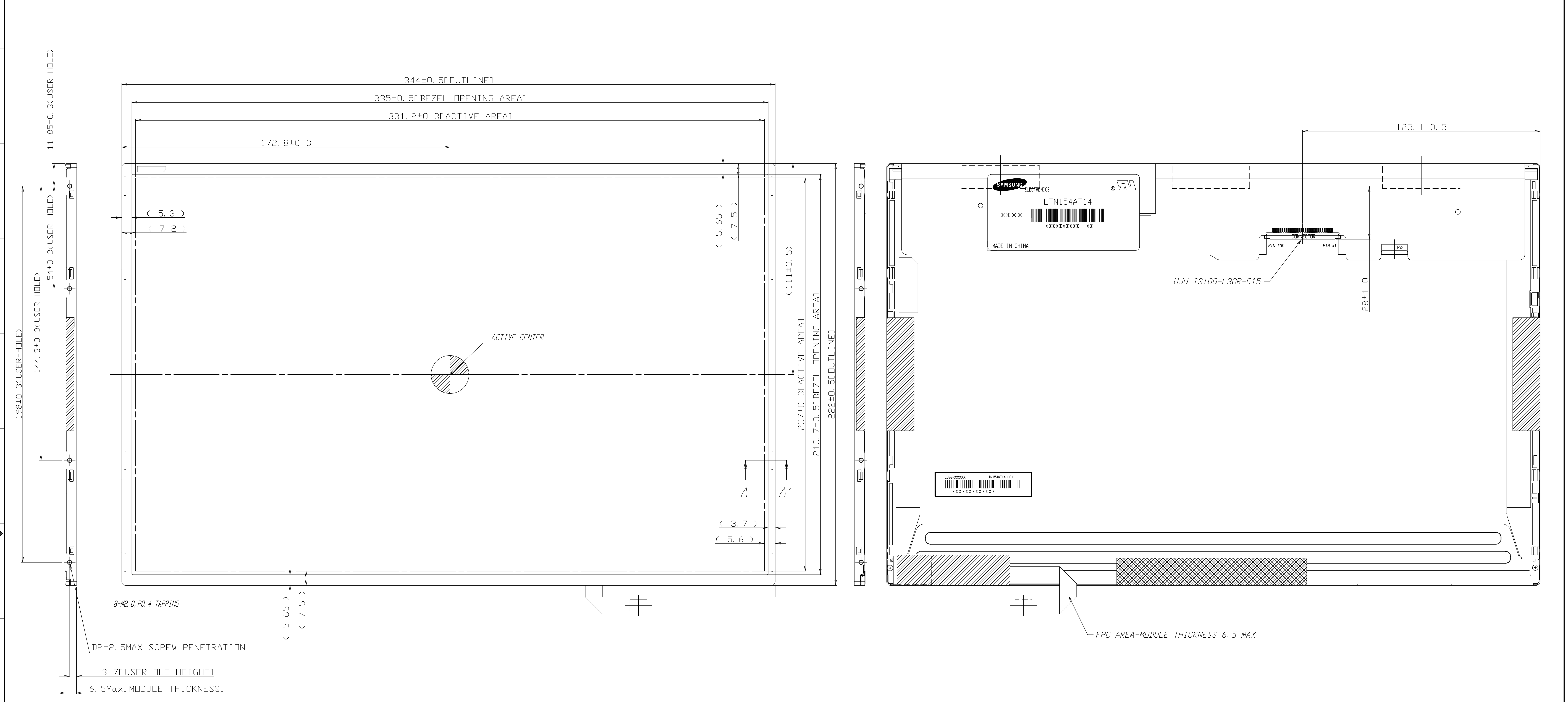
SEC Secret

7. Mechanical Outline Dimension

Aproval

[Refer to next page]

SEC Secret



* NOTE

- SIGNAL INTERFACE CONNECTOR TO BE SPECIFIED AS BELOW.
 - MAKER : UJU OR COMPATIBLE
 - INPUT CONNECTOR : UJU IS100-L30R-C15
- ALLOWED DEPTH OF USERHOLE SCREW INSERTION IS MAX 2.5mm
- TORQUE SPEC : MAX 2.5 Kgf-cm (5 TIMES)
- WEIGHT SPEC : TYP 540g, MAX 560g
- IN ORDER TO AVOID IC DAMAGE, IT IS NOT ALLOW THAT OVERLAPPING OF CABLES OR ANTENNAS, CAMERA, WLAN, WWAN OVER THESE COF LOCATIONS.

Z D S I S I M P R	GENERAL TOLERANCE				REV	DATE	DESCRIPTION OF REVISION				REASON		CHG'D BY
	STEP	LEVEL 1	LEVEL 2	LEVEL 3	UNIT	mm	DRA'N BY	DES'N BY	CHK'D BY	APP'D BY	MODEL NAME	LTN154AT14-L01	
	0 < X < 4	±0.05	±0.1	±0.2	SCALE	1/1	I. S. LEE				PART/SHEET NAME	OUTLINE DIMENSION	
	4 < X < 16	±0.08	±0.15	±0.3	TOLERANCE LEVEL 3	2009.07.14				CODE NO.	SHEET 1/1		
16 < X < 64	±0.12	±0.25	±0.5	SAMSUNG ELECTRONICS								VER. 001	
64 < X < 256	±0.25	±0.4	±0.8										

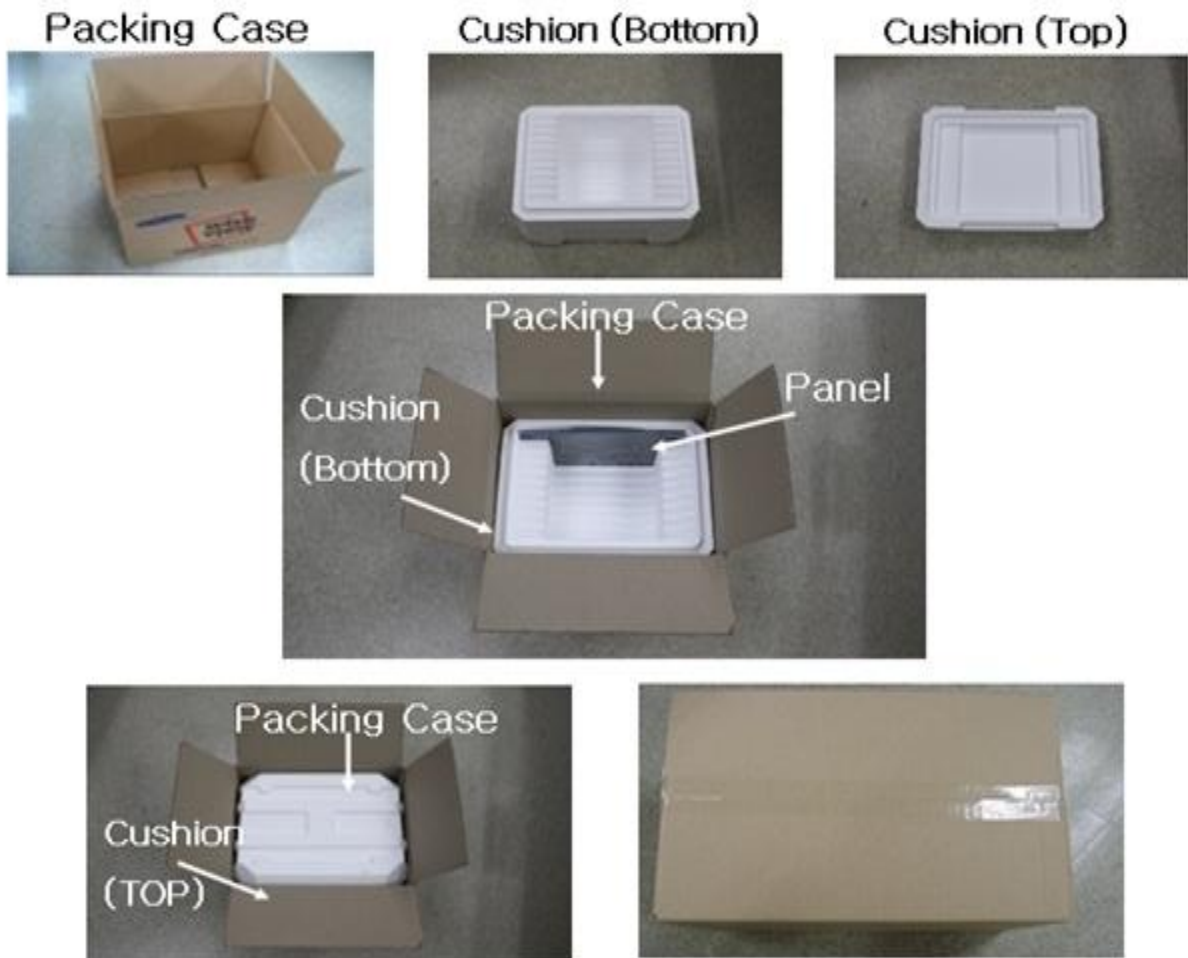
8. PACKING

1. CARTON (Internal Package)

(1) Packing Form

Corrugated fiberboard box and Corrugated cardboard as shock absorber

(2) Packing Method



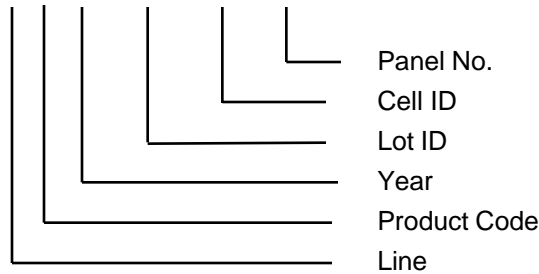
- Note 1) Total Weight : Approximately 10 kg
- 2) Acceptance number of piling : 20 sets
- 3) Carton size : 432(W) X 344(D) X 329(H)

SEC Secret

9. Product Markings and Others

A nameplate bearing followed by is affixed to a shipped product at the specified location on each product.

- (1) Parts number : LTN154AT14-L01
- (2) Revision : Three letter
- (3) Control code : One letter
- (4) Lot number : X X X _ X X X X X X X

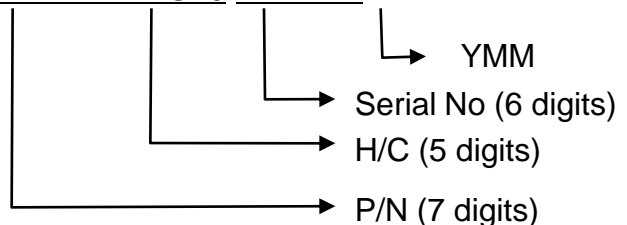


NOTE 1). This code indicating year is omitted in the products of SESL site.

(5) Product Label Definition



- TFT-LCD Product name : LTN154AT14
- Lot number : XXXXXXXXXXXXX
- Revision Code : L01
- Inspected work week : 0928(2009 Year, 28th week)
- P/N : Part Number (27R2415)
- EC NO : Engineering Change Number (Blank)
- FRU : Field Replaceable Unit Part Number(27R2416)
- Header Code : 1ZGFJ
- Lenovo Barcode : XXXXXXXXXXXXX1ZGFJ XXXXXX XXX



SEC Secret

10. GENERAL PRECAUTIONS

1. Handling

- (a) When the module is assembled, It should be attached to the system firmly using selected mounting holes. Be careful not to twist and bend the modules.
- (b) Refrain from strong mechanical shock and / or any force to the module. In addition to damage, this may cause improper operation or damage to the module and CCFT backlight.
- (c) Note that polarizers are very fragile and could be easily damaged. Do not press or scratch the surface harder than a HB pencil lead.
- (d) Wipe off water droplets or oil immediately. If you leave the droplets for a long time, Staining and discoloration may occur.
- (e) If the surface of the polarizer is dirty, clean it using some absorbent cotton or soft cloth.
- (f) The desirable cleaners are water, IPA(Isopropyl Alcohol) or Hexane. Do not use Ketone type materials(ex. Acetone), Ethyl alcohol, Toluene, Ethyl acid or Methyl chloride. It might permanent damage to the polarizer due to chemical reaction.
- (g) If the liquid crystal material leaks from the panel, it should be kept away from the eyes or mouth. In case of contact with hands, legs or clothes, it must be washed away thoroughly with soap.
- (h) Protect the module from static, it may cause damage to the C-MOS Gate Array IC.
- (i) Use fingerstalls with soft gloves in order to keep display clean during the incoming inspection and assembly process.
- (j) Do not disassemble the module.
- (k) Do not pull or fold the lamp wire.
- (l) Do not adjust the variable resistor which is located on the back side.
- (m) Protection film for polarizer on the module shall be slowly peeled off just before use so that the electrostatic charge can be minimized.
- (n) Pins of I/F connector shall not be touched directly with bare hands.

SEC Secret

2. STORAGE

We highly recommend to comply with the criteria in the table below.

ITEM	Unit	Min.	Max.
Storage Temperature	(°C)	5	40
Storage Humidity	(%rH)	35	75
Storage life	12 months		
Storage Condition	<ul style="list-style-type: none"> - The storage room should provide good ventilation and temperature control. - Products should not be placed on the floor, but on the Pallet away from a wall. - Prevent products from direct sunlight, moisture nor water; Be cautious of a build up of condensation. - Avoid other hazardous environment while storing goods. - If products delivered or kept in conditions of over the storage period of 3 months, the recommended temperature or humidity range, we recommend you leave them at a temperature of 20 °C and a humidity of 50% for 24 hours. 		

3. OPERATION

- (a) Do not connect, disconnect the module in the “ Power On” condition.
- (b) Power supply should always be turned on/off by following item 6.3 “ Power on/off sequence “.
- (c) Module has high frequency circuits. Sufficient suppression to the electromagnetic interference shall be done by system manufacturers. Grounding and shielding methods may be important to minimize the interference.
- (d) The standard limited warranty is only applicable when the module is used for general notebook applications. If used for purposes other than as specified, SEC is not to be held reliable for the defective operations. It is strongly recommended to contact SEC to find out fitness for a particular purpose.

4. OTHERS

- (a) Ultra-violet ray filter is necessary for outdoor operation.
- (b) Avoid condensation of water. It may result in improper operation or disconnection of electrode.
- (c) Do not exceed the absolute maximum rating value. (the supply voltage variation, input voltage variation, variation in part contents and environmental temperature, so on) Otherwise the module may be damaged.
- (d) If the module displays the same pattern continuously for a long period of time, it can be the situation when the image “sticks” to the screen.
- (e) This module has its circuitry PCB's on the rear side and should be handled carefully in order not to be stressed.

SEC Secret

11. EDID

Address (HEX)	FUNCTION	Value HEX	BIN	DEC	ASCII or Data	Notes
00	Header	00	00000000	0		EDID Header
01		FF	11111111	255		
02		FF	11111111	255		
03		FF	11111111	255		
04		FF	11111111	255		
05		FF	11111111	255		
06		FF	11111111	255		
07		00	00000000	0		
08	ID Manufacturer Name	30	00110000	48	L E N	3 character ID
09		AE	10101110	174		"LEN: as an edn-customer"
0A	ID Product Code	57	01010111	87		
0B		40	01000000	64		
0C	32-bit serial no.	00	00000000	0		
0D		00	00000000	0		
0E		00	00000000	0		
0F		00	00000000	0		
10	Week of manufacture	00	00000000	0		
11	Year of manufacture	12	00010010	18	2008	2008
12	EDID Structure Ver.	01	00000001	1	1	EDID Ver. 1.0
13	EDID revision #	03	00000011	3	3	EDID Rev. 3
14	Video input definition	80	10000000	128		
15	Max H image size	21	00100001	33	33	33 cm(approx)
16	Max V image size	15	00010101	21	21	21 cm(approx)
17	Display Gamma	78	01111000	120	2.2	Gamma 2.2
18	Feature support	EA	11101010	234		
19	Red/green low bits	03	00000011	3		10000111
1A	Blue/white low bits	15	00010101	21		11111110
1B	Red x/ high bits	97	10010111	151	0.590	Red x 0.590= 10010010
1C	Red y	57	01010111	87	0.340	Red y 0.340= 01010111
1D	Green x	52	01010010	82	0.320	Green x 0.320= 01010100
1E	Green y	8C	10001100	140	0.550	Green y 0.550= 10001111
1F	Blue x	27	00100111	39	0.152	Blue x 0.152= 00101001
20	Blue y	21	00100001	33	0.130	Blue y 0.130= 00100010
21	White x	50	01010000	80	0.313	White x 0.313= 01010000
22	White y	54	01010100	84	0.329	White y 0.329= 01010100
23	Established timing 1	00	00000000	0		
24	Established timing 2	00	00000000	0		
25	Established timing 3	00	00000000	0		
26	Standard timing #1	01	00000001	1		not used
27		01	00000001	1		
28	Standard timing #2	01	00000001	1		not used
29		01	00000001	1		
2A	Standard timing #3	01	00000001	1		not used
2B		01	00000001	1		
2C	Standard timing #4	01	00000001	1		not used
2D		01	00000001	1		
2E	Standard timing #5	01	00000001	1		not used
2F		01	00000001	1		
30	Standard timing #6	01	00000001	1		not used
31		01	00000001	1		
32	Standard timing #7	01	00000001	1		not used
33		01	00000001	1		
34	Standard timing #8	01	00000001	1		not used
35		01	00000001	1		

SEC Secret

36	Detailed timing/monitor descriptor #1	C7	11000111	199	71.11	Main clock= 71.11 MHz
37		1B	00011011	27		
38		00	00000000	0	1280	Hor active=1280 pixels
39		A0	10100000	160	160	Hor blanking=160 pixels
3A		50	01010000	80		4bit : 4bit
3B		20	00100000	32	800	Vertical active=800 lines
3C		17	00010111	23	23	Vertical blanking=23 lines
3D		30	00110000	48		4bit : 4bit
3E		30	00110000	48	48	
3F		20	00100000	32	32	H sync. Width=32 pixels
40		36	00110110	54	3 6	V sync. Offset=3 lines V sync. Width=6 lines
41		00	00000000	0		2bit : 2bit :2bit :2bit
42		4B	01001011	75	331	H image size= 331 mm(approx)
43		CF	11001111	207	207	V image size = 207 mm(approx)
44		10	00010000	16		
45		00	00000000	0		No Horizontal Border
46		00	00000000	0		No Vertical Border
47	19	00011001	25			
48	Detailed timing/monitor descriptor #2	7A	01111010	122	60.1	Main clock= 60.10 MHz (@50Hz)
49		17	00010111	23		
4A		00	00000000	0	1280	Hor active=1280 pixels
4B		B1	10110001	177	177	Hor blanking=177 pixels
4C		50	01010000	80		4bit : 4bit
4D		20	00100000	32	800	Vertical active=800 lines
4E		19	00011001	25	25	Vertical blanking=25 lines
4F		30	00110000	48		4bit : 4bit
50		30	00110000	48	48	
51		20	00100000	32	32	H sync. Width=32 pixels
52		36	00110110	54	3 6	V sync. Offset=3 lines V sync. Width=6 lines
53		0	00000000	0		2bit : 2bit :2bit :2bit
54		4B	01001011	75	331	H image size= 331 mm(approx)
55		CF	11001111	207	207	V image size = 207 mm(approx)
56		10	00010000	16		
57		00	00000000	0		No Horizontal Border
58		00	00000000	0		No Vertical Border
59	19	00011001	25			
5A	Detailed timing/monitor descriptor #3	00	00000000	0		Manufacturer Specified (Timing)
5B		00	00000000	0		
5C		00	00000000	0		
5D		0F	00001111	15		
5E		0	00000000	0		
5F		81	10000001	129		
60		0A	00001010	10		
61		32	00110010	50		
62		81	10000001	129		
63		0A	00001010	10		
64		28	00101000	40		
65		15	00010101	21		
66		09	00001001	9		
67		00	00000000	0		
68		4C	01001100	76		
69		A3	10100011	163		
6A		58	01011000	88	[X]	
6B	33	00110011	51	[3]	(Hex, LSB first)	

SEC Secret

6C	Detailed timing/monitor descriptor #4	00	00000000	0		Monitor Name Tag (ASCII)
6D		00	00000000	0		
6E		00	00000000	0		
6F		FE	11111110	254		
70		00	00000000	0		
71		4C	01001100	76	[L]	
72		54	01010100	84	[T]	
73		4E	01001110	78	[N]	
74		31	00110001	49	[1]	
75		35	00110101	53	[5]	
76		34	00110100	52	[4]	
77		41	01000001	65	[A]	
78		54	01010100	84	[T]	
79		31	00110001	49	[1]	
7A		34	00110100	52	[4]	
7B	4C	01001100	76	[L]		
7C	30	00110000	48	[0]		
7D	31	00110001	49	[1]		
7E	Extension Flag	00	00000000	0		
7F	Checksum	79	01111001	121		