



TO :

DATE : Nov. 22, 2010

SAMSUNG TFT-LCD**MODEL NO. : LTN156AT15-Cxx**

NOTE : Extension code [- Cxx]
→ LTN156AT15-Cxx
Surface type [**Glare**]

The information described in this SPEC is preliminary and can be changed without prior notice.

**Application engineering part, Mobile Division
Samsung Electronics Co., Ltd.**

**Samsung Secret**

Revision History	----- (3)
General Description	----- (4)
1. Absolute Maximum Ratings	----- (5)
1.1 Absolute Ratings of environment	
1.2 Electrical Absolute Ratings	
2. Optical Characteristics	----- (7)
3. Electrical Characteristics	----- (10)
3.1 TFT LCD Module	
3.2 Backlight Unit	
3.3 LED Driver	
4. Block Diagram	----- (13)
4.1 TFT LCD Module	
4.2 LED Placement Structure	
5. Input Terminal Pin Assignment	----- (14)
5.1 Input Signal & Power	
5.2 LVDS Interface	
5.3 Timing Diagrams of LVDS For Transmitting	
5.4 Input Signals, Basic Display Colors and Gray Scale of Each Color.	
5.5 Pixel format	
6. Interface Timing	----- (21)
6.1 Timing Parameters	
6.2 Timing Diagrams of interface Signal	
6.3 Power ON/OFF Sequence	
7. Outline Dimension	----- (24)
8. Packing	----- (26)
9. Markings & Others	----- (27)
10. General Precautions	----- (29)
11. EDID	----- (31)

REVISION HISTORY

Approval

Date	Revision No.	Page	Summary
Nov.22	A00	All	The approval specification of LTN156AT15-Cxx was issued first.

Samsung Secret

Doc.No.

LTN156AT15-Cxx

Rev.No

04-A00-G-101122

Page

3 / 33

GENERAL DESCRIPTION

DESCRIPTION

LTN156AT15 is a color active matrix TFT (Thin Film Transistor) liquid crystal display (LCD) that uses amorphous silicon TFT as switching devices. This model is composed of a TFT LCD panel, a driver circuit and a backlight unit. The resolution of a 15.6" contains 1366 x 768 pixels and can display up to 262,144 colors. 6 O'clock direction is the optimum viewing angle.

FEATURES

- High contrast ratio
- HD(1366 x 768 pixels) resolution
- Low power consumption
- Fast Response
- LED Back Light with embedded LED Driver
- DE (Data enable) only mode
- 3.3V LVDS Interface
- Onboard EEDID chip

APPLICATIONS

- Notebook PC
- If the usage of this product is not for PC application, but for others, please contact SEC

GENERAL INFORMATION

Item	Specification	Unit	Note
Display area	344.232 (H) x 193.536 (V) (15.6" diagonal)	mm	
Driver element	a-Si TFT active matrix		
Display colors	262,144		
Number of pixel	1366 * 768	pixel	
Pixel arrangement	RGB vertical stripe		
Pixel pitch	0.252 (H) x 0.252 (V) (TYP.)	mm	
Display Mode	Normally white		
Surface treatment	Haze 0, Hardness 3H		Glare

Samsung Secret

Mechanical Information

Item		Min.	Typ.	Max.	Unit	Note
Module size	Horizontal (H)	358.8	359.3	359.8	mm	
	Vertical (V)	208.95	209.45	209.95	mm	
	Depth (D)	-	-	4.0	mm	(1)
Weight		-	405	420	g	

Note (1) Measurement condition of outline dimension

- . Equipment : Bernier Calipers
- . Push Force : 500g · f (minimum)

1. ABSOLUTE MAXIMUM RATINGS

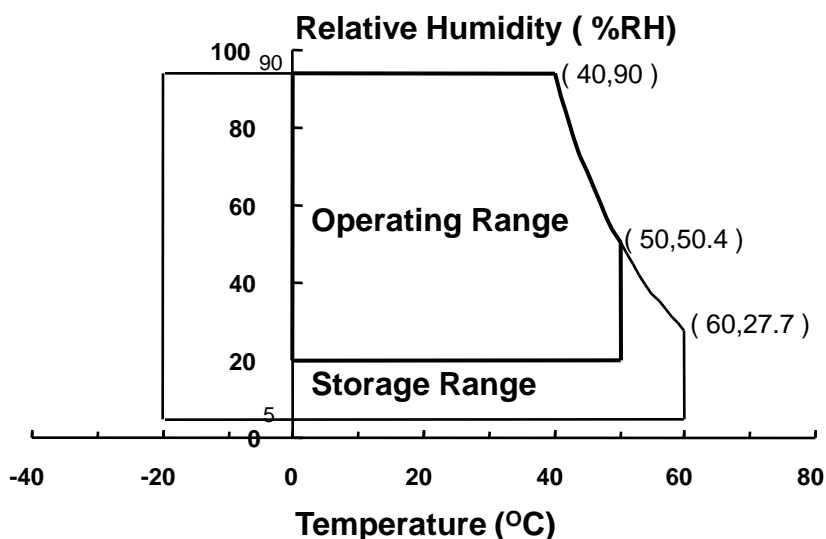
1.1 ENVIRONMENTAL ABSOLUTE RATINGS

Item	Symbol	Min.	Max.	Unit	Note
Storage temperate	TSTG	-20	60	°C	(1)
Operating temperate (Temperature of glass surface)	TOPR	0	50	°C	(1)
Shock (non-operating)	Snop	-	240	G	(2),(4)
Vibration (non-operating)	Vnop	-	2.41	G	(3),(4)

Note (1) Temperature and relative humidity range are shown in the figure below.

95 % RH Max. ($40\text{ °C} \geq T_a$)

Maximum wet - bulb temperature at 39 °C or less. ($T_a > 40\text{ °C}$) No condensation



(2) 2ms, half sine wave, one time for $\pm X$, $\pm Y$, $\pm Z$.

(3) 5 - 500 Hz, random vibration, 30min for X, Y, Z.

(4) At testing Vibration and Shock, the fixture in holding the Module to be tested have to be hard and rigid enough so that the Module would not be twisted or bent by the fixture.

Samsung Secret

1.2 ELECTRICAL ABSOLUTE RATINGS

(1) TFT LCD MODULE

 $V_{DD}=3.3V$, $V_{SS}=GND=0V$

Item	Symbol	Min.	Max.	Unit	Note
Power Supply Voltage	V_{DD}	$V_{DD} - 0.3$	$V_{DD} + 0.3$	V	(1)
Logic Input Voltage	V_{IN}	$V_{DD} - 0.3$	$V_{DD} + 0.3$	V	(1)

Note (1) Within T_a (25 ± 2 °C)

Samsung Secret

2. OPTICAL CHARACTERISTICS

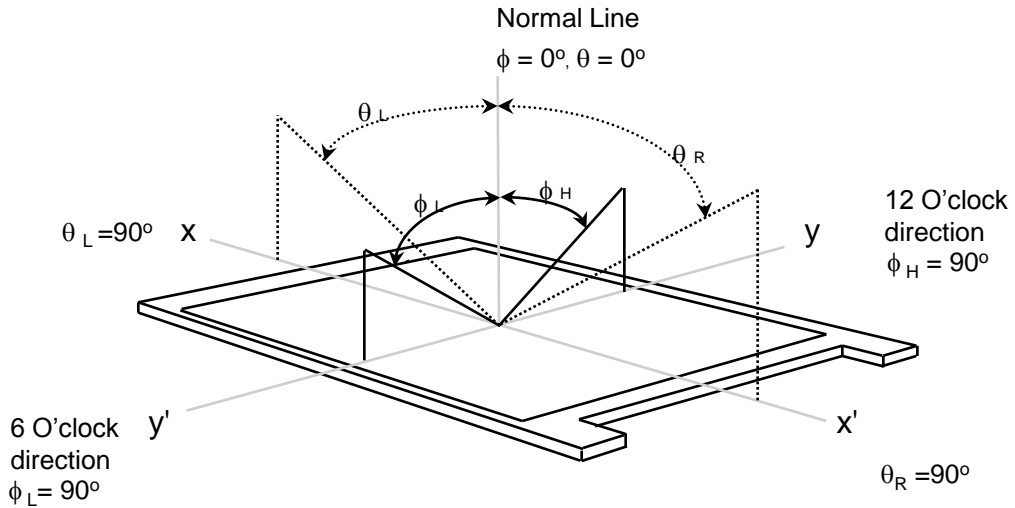
The following items are measured under stable conditions. The optical characteristics should be measured in a dark room or equivalent state with the methods shown in Note (5).
Measuring equipment : TOPCON SR-3

* Ta = 25 ± 2 °C, V_{DD}=3.3V, fv= 60Hz, fdCLK = 72.33MHz, IF = 100% duty

Item	Symbol	Condition	Min.	Typ.	Max	Unit	Note
Contrast Ratio (5 Points)	CR	Normal Viewing Angle $\phi = 0$ $\theta = 0$	300	500	-	-	(1), (2), (5)
Response Time at Ta (Rising + Falling)	T _{RT}		-	16	25	msec	(1), (3)
Average Luminance of White (5 Points)	Y _{L,AVE}		190	220	-	cd/m ²	IF=100% duty (1), (4)
Color Chromaticity (CIE)	Red		R _X	-0.03	0.615	+0.03	-
		R _Y	0.355				
	Green	G _X	0.355				
		G _Y	0.610				
	Blue	B _X	0.150				
		B _Y	0.100				
	White	W _X	0.313				
		W _Y	0.329				
Viewing Angle	Hor.	θ_L	CR ≥ 10 At center	40	45	-	Degrees (1), (5) SR-3
		θ_H		40	45	-	
	Ver.	ϕ_H		15	15	-	
		ϕ_L		30	30	-	
Color Gamut	CG	-	60	-	%		
13 Points White Variation	δ_L	-	-	1.7	-	(6)	

Samsung Secret

Note 1) Definition of Viewing Angle : Viewing angle range($10 \leq C/R$)

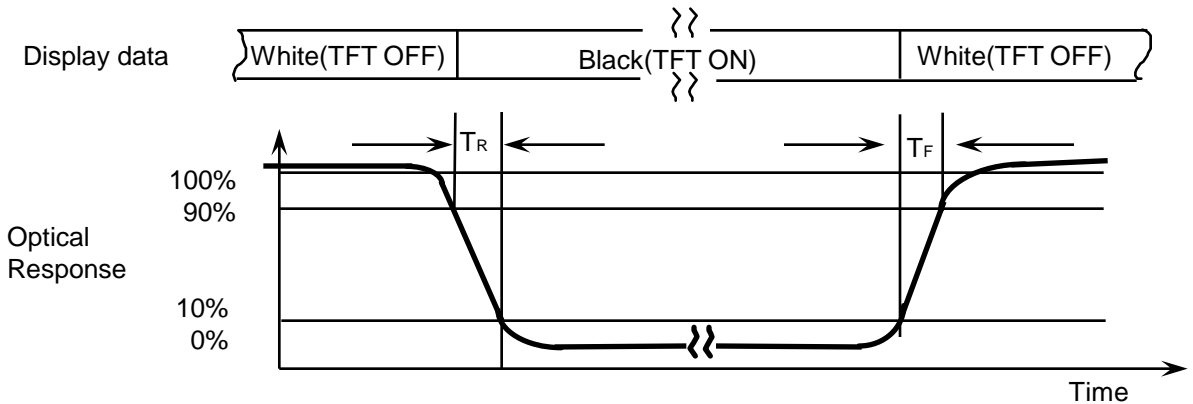


Note 2) Definition of Contrast Ratio (CR) : Ratio of gray max (Gmax) ,gray min (Gmin) at 5 points(4, 5, 7, 9, 10)

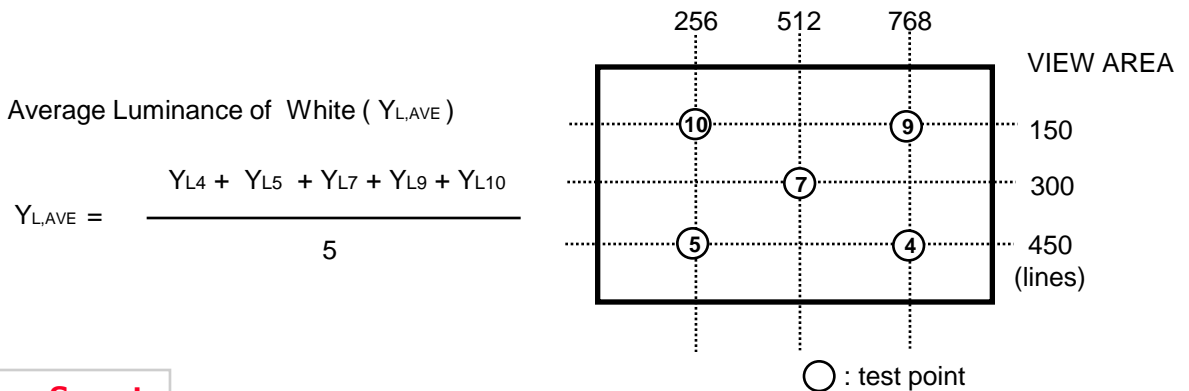
$$CR = \frac{CR(4) + CR(5) + CR(7) + CR(9) + CR(10)}{5}$$

Points : (4) , (5) , (7) , (9) , (10) at the figure of Note (6).

Note 3) Definition of Response time :

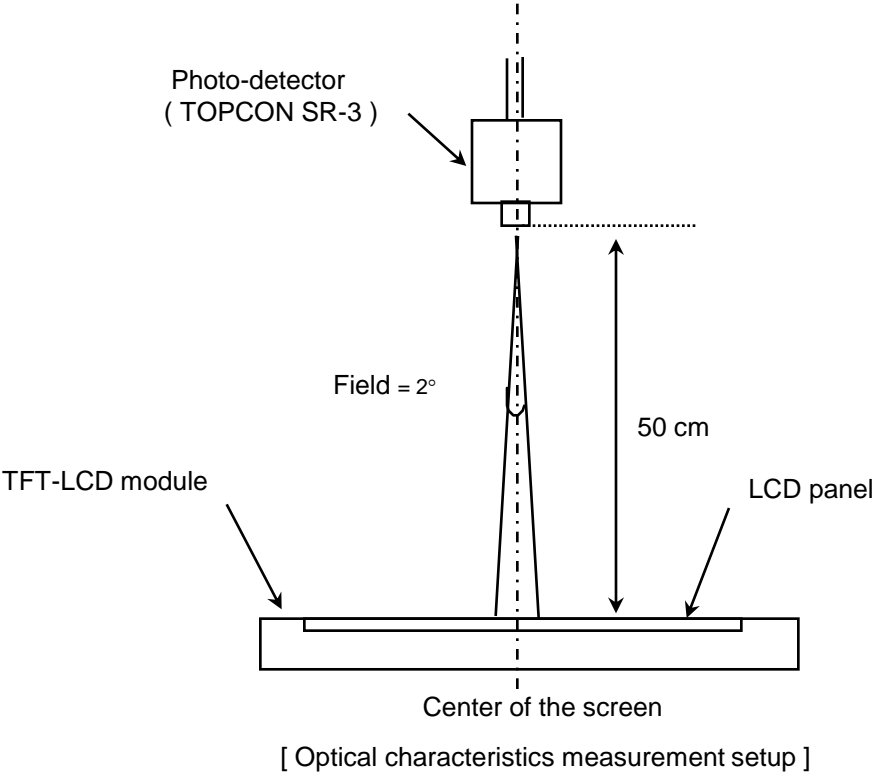


Note 4) Definition of Average Luminance of White : measure the luminance of white at 5 points.



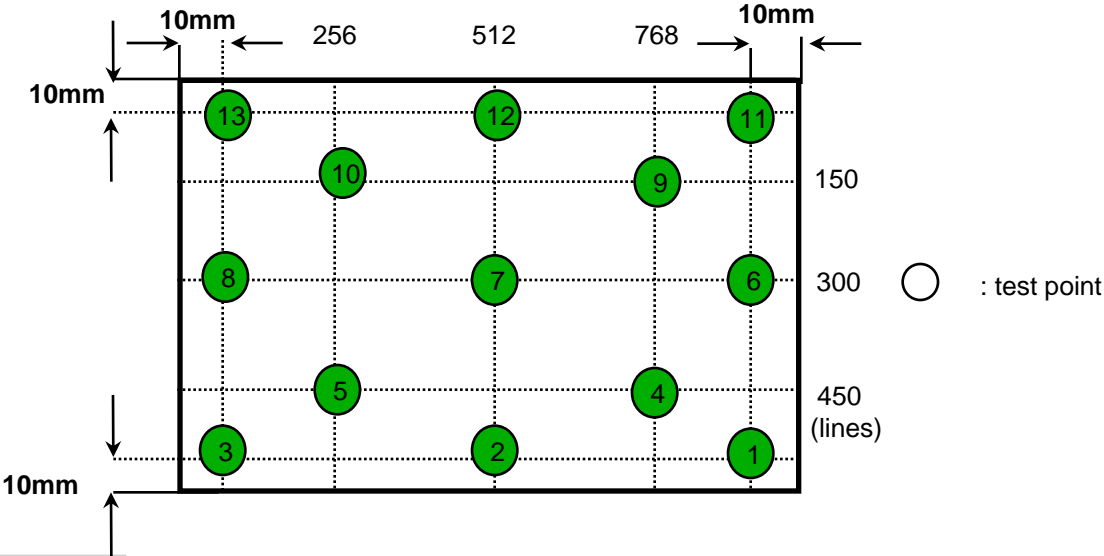
Samsung Secret

Note 5) After stabilizing and leaving the panel alone at a given temperature for 30 min , the measurement should be executed. Measurement should be executed in a stable, windless, and dark room. 30 min after lighting the backlight. This should be measured in the center of screen.
 IF current : 27mA
 Environment condition : Ta = 25 ± 2 °C



Note 6) Definition of 13 points white variation (δL), CR variation(C_{VER}) [① ~ ⑬]

$$\delta L = \frac{\text{Maximum luminance of 13 points}}{\text{Minimum luminance of 13 points}}$$



Samsung Secret

3. ELECTRICAL CHARACTERISTICS

Approval

3.1 TFT LCD MODULE

Ta= 25 ± 2°C

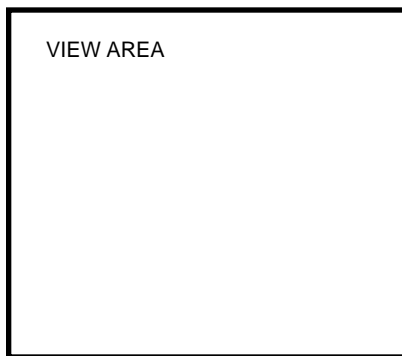
Item	Symbol	Min.	Typ.	Max.	Unit	Note	
Voltage of Power Supply	V _{DD}	3.0	3.3	3.6	V		
Differential Input Voltage for LVDS Receiver Threshold	High	V _{IH}	-	-	+100	mV	V _{CM} = +1.2V
	Low	V _{IL}	-100	-	-	mV	
Vsync Frequency	f _v	-	60	-	Hz		
Main Frequency	f _{DCLK}	-	72.33	-	MHz	-	
Rush Current	I _{RUSH}	-	-	1.5	A	(4)	
Current of Power Supply	White	I _{DD}	-	200	-	mA	(2),(3)*a
	Mosaic		-	220	-	mA	(2),(3)*b
	V. stripe		-	350	-	mA	(2),(3)*c

Note (1) Display data pins and timing signal pins should be connected.(GND = 0V)

(2) f_v = 60Hz, f_{DCLK} = 72.33MHz, V_{DD} = 3.3V , DC Current.

(3) Power dissipation pattern

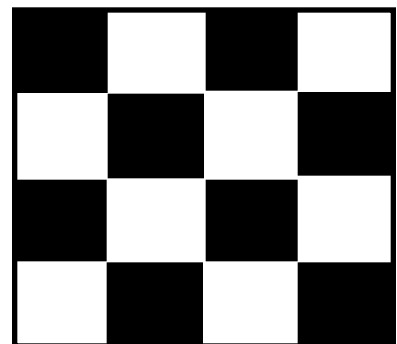
*a) White Pattern



*b) Mosaic Pattern

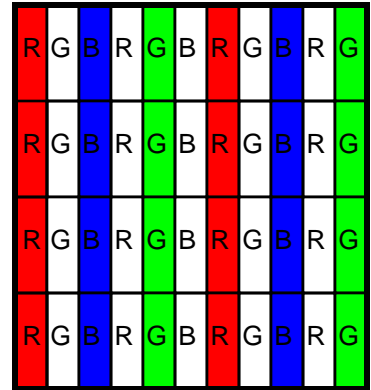
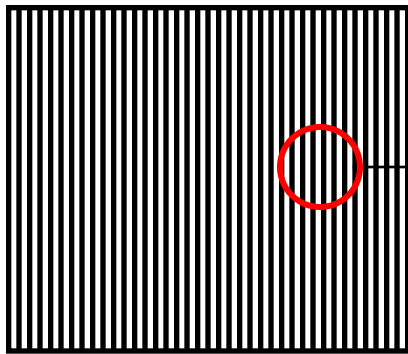
Display Brightest Gray Level →

Display Darkest Gray Level →

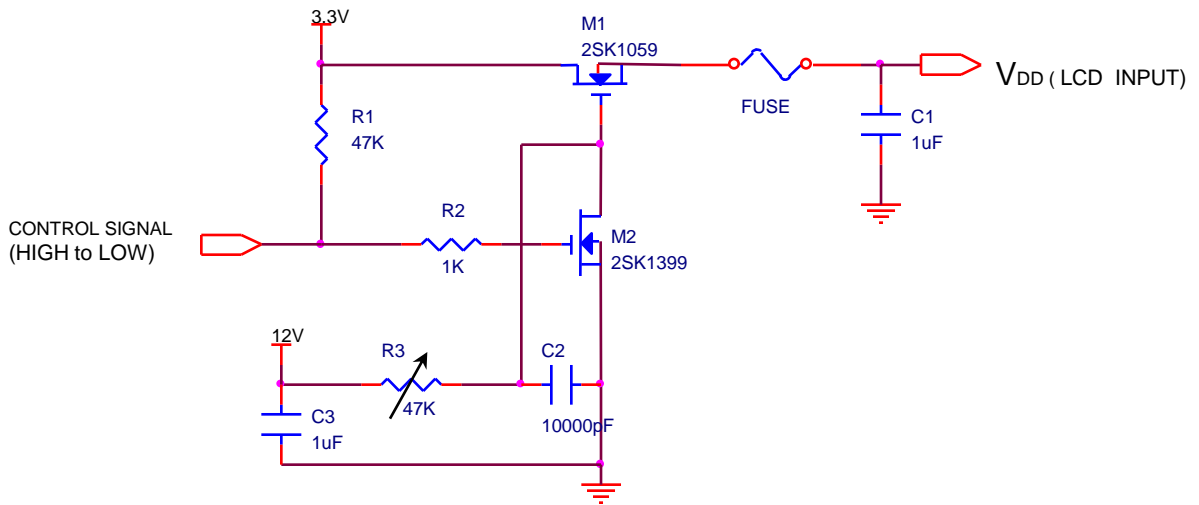


Samsung Secret

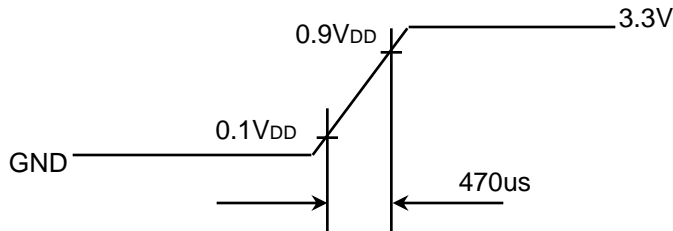
*c) 1dot Vertical stripe pattern



4) Rush current measurement condition



V_{DD} rising time is 470us



Samsung Secret

3.2 LED Driver

- On board LED Driver

Ta= 25 ± 2 °C

Item-	Symbol	Min.	Typ.	Max.	Unit	Note
Input Voltage	V _{in}	6	12	24	V	-
Input Current	I	-	108	-	mA	-
PWM Control Duty Ratio	D	10	-	100	%	-
External PWM Dimming Control Frequency (BLIM)	F _{BLIM}		1	10	kHz	
Operating Life Time	Hr	10,000	-	-	Hour	

Note (1) Life time (Hr) of LEDs can be defined as the time in which it continues to operate under the condition Ta= 25 ± 2 °C and IF = 27 mArms until one of the following event occurs.

1. When the brightness becomes 50% or lower than the original.

3.3 BACK-LIGHT UNIT

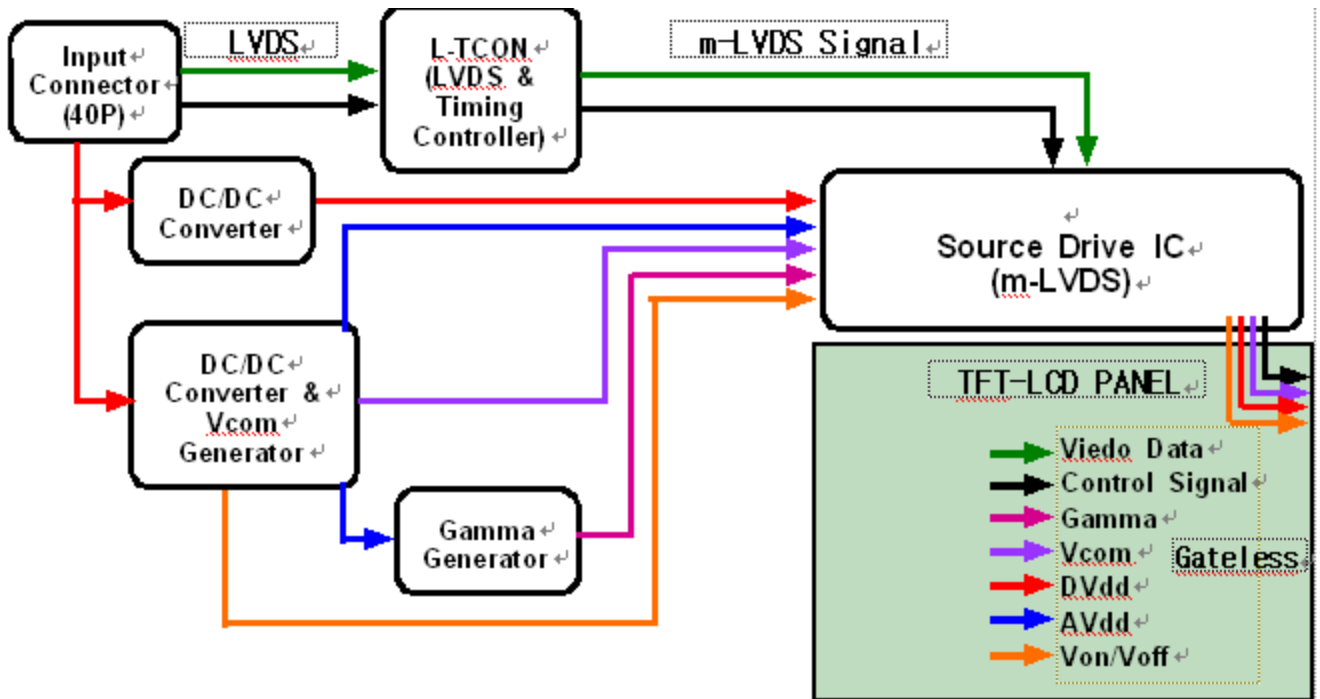
Ta= 25 ± 2 °C

Item	Symbol	Min.	Typ.	Max.	Unit	Note
LED Forward Current	IF	-	27	-	mA	
LED Forward Voltage	VF	3.0	3.2	3.4	V	
LED Array Voltage	VP	-	28.8	-	V	VF X 9 LEDs
Power Consumption	P	-	-	3.95	W	IF X VF X 36 LEDs @ 220 nit

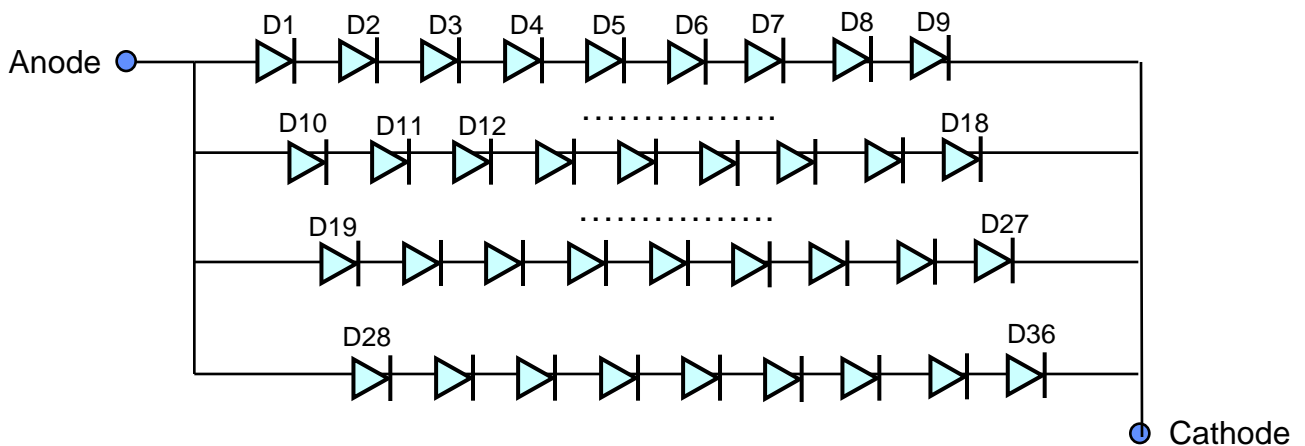
Samsung Secret

4. BLOCK DIAGRAM

4.1 TFT LCD Module



4.2 LED placement structure



Samsung Secret

5. INPUT TERMINAL PIN ASSIGNMENT

Approval

5.1. Input Signal & Power (LVDS, Connector : I-PEX 20455-040E-## or equivalent)

No.	Symbol	Function	Polarity	Remarks
1	NU	NOT USED		
2	VDD	Power (Vdd = 3.3V)		
3	VDD	Power (Vdd = 3.3V)		
4	VCC EDID	VCC_EDID		
5	WPN	WPN		
6	SCL	CLOCK FOR EDID		
7	SDA	DATA FOR EDID		
8	O_RXIN0-	LVDS 0th Signal Negative(Odd)	Negative	
9	O_RXIN0+	LVDS 0th Signal Positive(Odd)	Positive	
10	GND	Ground		
11	O_RXIN1-	LVDS 1st Signal Negative(Odd)	Negative	
12	O_RXIN1+	LVDS 1st Signal Positive(Odd)	Positive	
13	GND	Ground		
14	O_RXIN2-	LVDS 2nd Signal Negative(Odd)	Negative	
15	O_RXIN2+	LVDS 2nd Signal Positive(Odd)	Positive	
16	GND	Ground		
17	O_RXCLKIN-	LVDS Clock Signal Negative(Odd)	Negative	
18	O_RXCLKIN+	LVDS Clock Signal Positive(Odd)	Positive	
19	NC	NOT CONNECT		
20	NC	NOT CONNECT		
21	NC	NOT CONNECT		
22	GND	Ground		
23	NC	NOT CONNECT		
24	NC	NOT CONNECT		
25	GND	Ground		
26	NC	NOT CONNECT		
27	NC	NOT CONNECT		
28	GND	Ground		
29	NC	NOT CONNECT		
30	NC	NOT CONNECT		

Samsung Secret

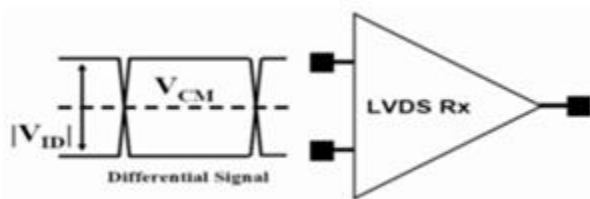
No.	Symbol	Function	Polarity	Remarks
31	GND	Ground		
32	GND	Ground		
33	GND	Ground		
34	NU	NOT USED		
35	PWM	PWM		
36	BL EN	BL ENABLED		
37	NC	NOT CONNECT		
38	VBL	B/L VCC		
39	VBL	B/L VCC		
40	VBL	B/L VCC		

Samsung Secret

5.2 LVDS Interface

5.2.1 LVDS DC Input

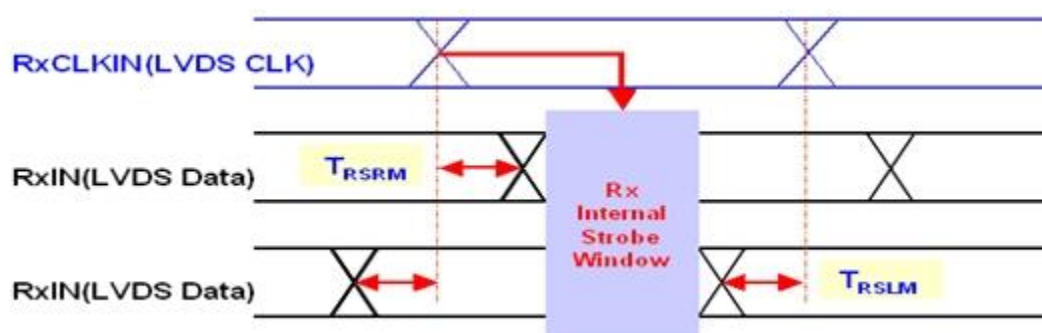
ITEM	SYMBOL	MIN.	TYP.	MAX.	UNIT	NOTE
LVDS Differential Voltage	$ V_{ID} $	100	-	200	mV	
Input Common Mode Voltage	V_{CM}	0.4	1.2	1.8	V	



5.2.1 LVDS AC Input

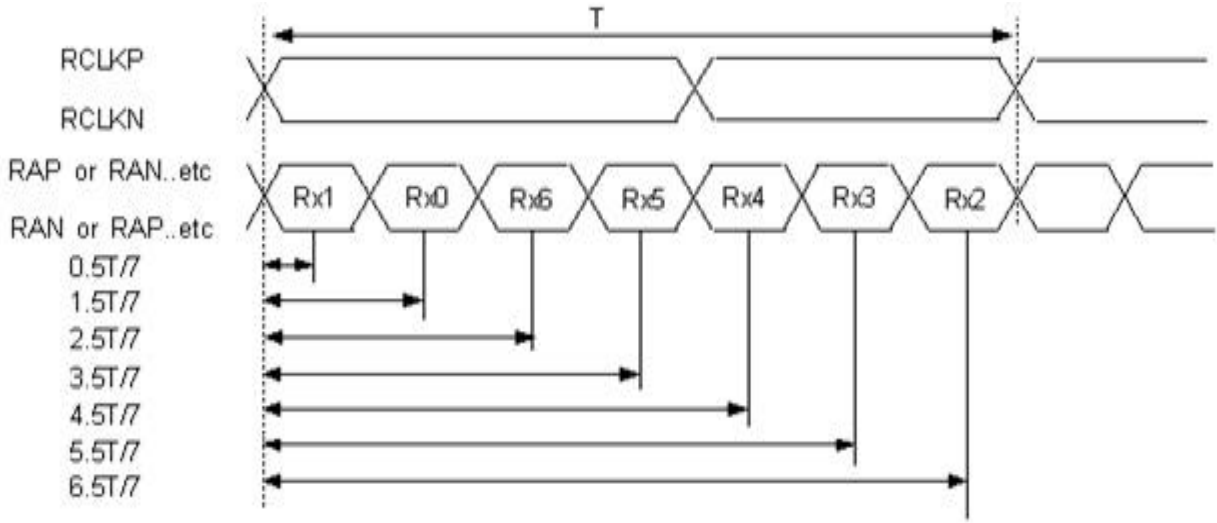
ITEM	SYMBOL	MIN.	TYP.	MAX.	UNIT	NOTE
LVDS RX Skew(Strobe) Right Margin	90MHz	-	-	300	ps	(1),(2)
	65MHz	-	-	400	ps	(1),(2)
LVDS RX Skew(Strobe) Left Margin	90MHz	-300	-	-	ps	(1),(2)
	65MHz	-400	-	-	ps	(1),(2)
SSC Modulation Rate		-	-	± 3	%	(3)
SSC Modulation Frequency		-	-	300	KHz	(3)

Note (1) : LVDS Receiver Skew (Strobe) Margin

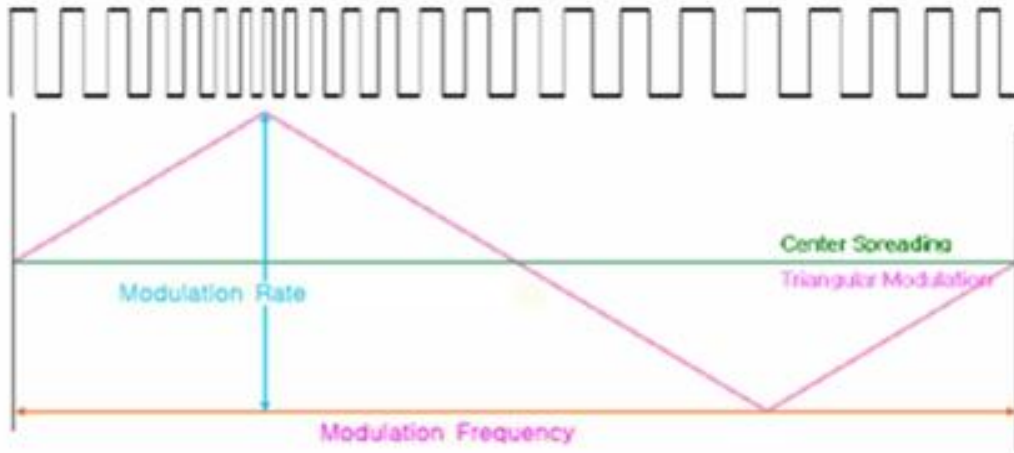


Samsung Secret

Note (2) : Ideal Strobe Positions for LVDS Input

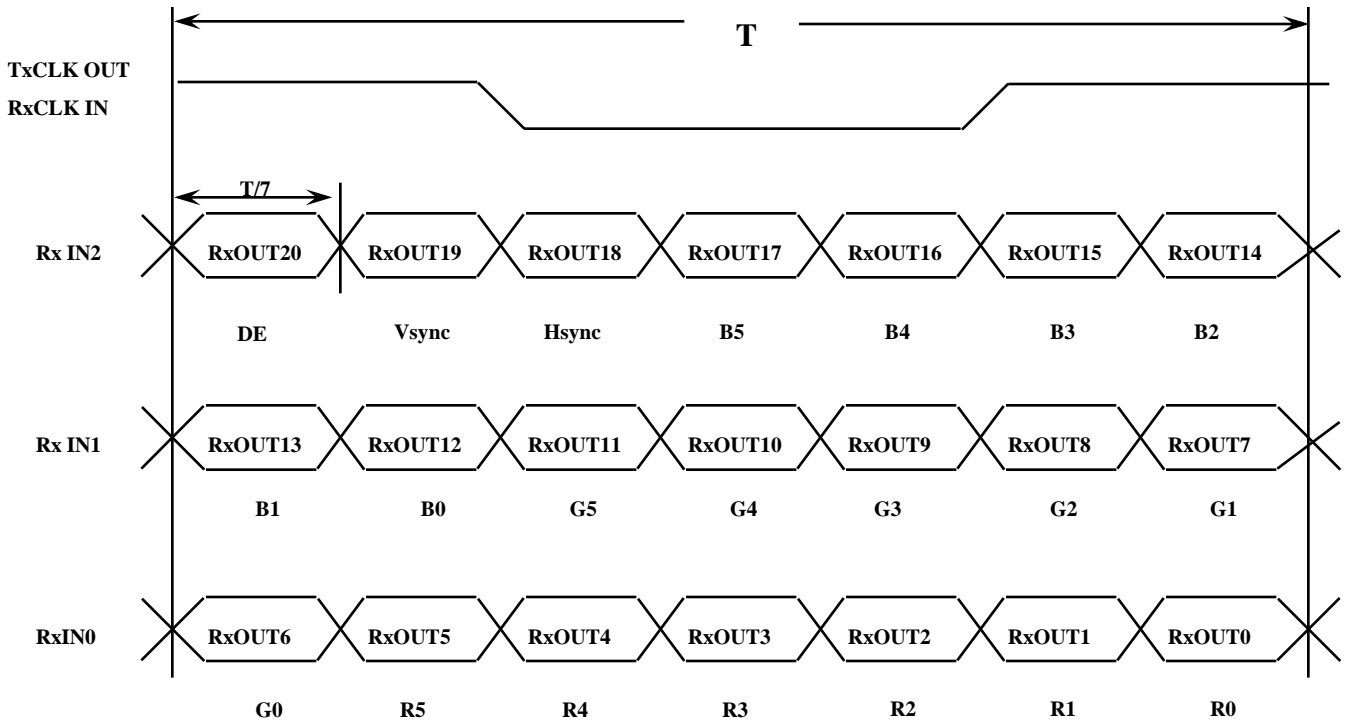


Note (3) : SSC (Spread Spectrum Clock)



5.3 Timing Diagrams of LVDS For Transmission

LVDS Receiver : Integrated T-CON



Samsung Secret

5.4 Input Signals, Basic Display Colors and Gray Scale of Each Color

Color	Display	Data Signal																	Gray Scale Level
		Red					Green					Blue							
		R0	R1	R2	R3	R4	R5	G0	G1	G2	G3	G4	G5	B0	B1	B2	B3	45	
Basic Colors	Black	0	0	0	0	0	0	0	0	0	0	0	0	0	0	0	0	0	-
	Blue	0	0	0	0	0	0	0	0	0	0	0	0	1	1	1	1	1	-
	Green	0	0	0	0	0	0	1	1	1	1	1	1	0	0	0	0	0	-
	Cyan	0	0	0	0	0	0	1	1	1	1	1	1	1	1	1	1	1	-
	Red	1	1	1	1	1	1	0	0	0	0	0	0	0	0	0	0	0	-
	Magenta	1	1	1	1	1	1	0	0	0	0	0	0	1	1	1	1	1	-
	Yellow	1	1	1	1	1	1	1	1	1	1	1	1	0	0	0	0	0	-
	White	1	1	1	1	1	1	1	1	1	1	1	1	1	1	1	1	1	-
Gray Scale Of Red	Black	0	0	0	0	0	0	0	0	0	0	0	0	0	0	0	0	0	R0
	Dark	1	0	0	0	0	0	0	0	0	0	0	0	0	0	0	0	0	R1
	↑	0	1	0	0	0	0	0	0	0	0	0	0	0	0	0	0	0	R2
	:	:	:	:	:	:	:	:	:	:	:	:	:	:	:	:	:	:	R3~R60
	:	:	:	:	:	:	:	:	:	:	:	:	:	:	:	:	:	:	
	↓	1	0	1	1	1	1	0	0	0	0	0	0	0	0	0	0	0	R61
	Light	0	1	1	1	1	1	0	0	0	0	0	0	0	0	0	0	0	R62
	Red	1	1	1	1	1	1	0	0	0	0	0	0	0	0	0	0	0	R63
Gray Scale Of Green	Black	0	0	0	0	0	0	0	0	0	0	0	0	0	0	0	0	0	G0
	Dark	0	0	0	0	0	0	1	0	0	0	0	0	0	0	0	0	0	G1
	↑	0	0	0	0	0	0	0	1	0	0	0	0	0	0	0	0	0	G2
	:	:	:	:	:	:	:	:	:	:	:	:	:	:	:	:	:	:	G3~G60
	:	:	:	:	:	:	:	:	:	:	:	:	:	:	:	:	:	:	
	↓	0	0	0	0	0	0	1	0	1	1	1	1	0	0	0	0	0	G61
	Light	0	0	0	0	0	0	0	1	1	1	1	1	0	0	0	0	0	G62
	Green	0	0	0	0	0	0	1	1	1	1	1	1	0	0	0	0	0	G63
Gray Scale Of Blue	Black	0	0	0	0	0	0	0	0	0	0	0	0	0	0	0	0	0	B0
	Dark	0	0	0	0	0	0	0	0	0	0	0	0	1	0	0	0	0	B1
	↑	0	0	0	0	0	0	0	0	0	0	0	0	0	1	0	0	0	B2
	:	:	:	:	:	:	:	:	:	:	:	:	:	:	:	:	:	:	B3~B60
	:	:	:	:	:	:	:	:	:	:	:	:	:	:	:	:	:	:	
	↓	0	0	0	0	0	0	0	0	0	0	0	0	1	0	1	1	1	B61
	Light	0	0	0	0	0	0	0	0	0	0	0	0	0	1	1	1	1	B62
	Blue	0	0	0	0	0	0	0	0	0	0	0	0	1	1	1	1	1	B63

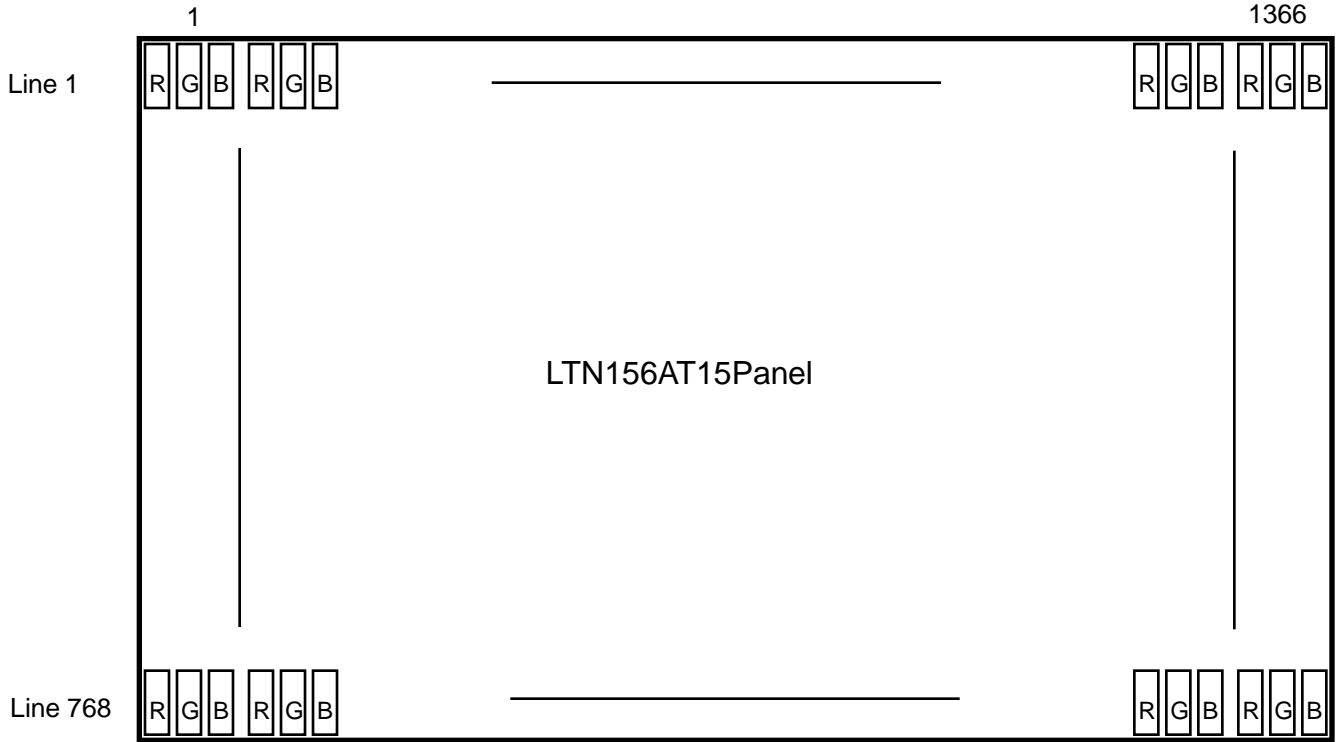
Note 1) Definition of gray :

Rn: Red gray, Gn: Green gray, Bn: Blue gray (n=gray level)

Note 2) Input signal: 0 =Low level voltage, 1=High level voltage

Samsung Secret

5.5 Pixel Format in the display



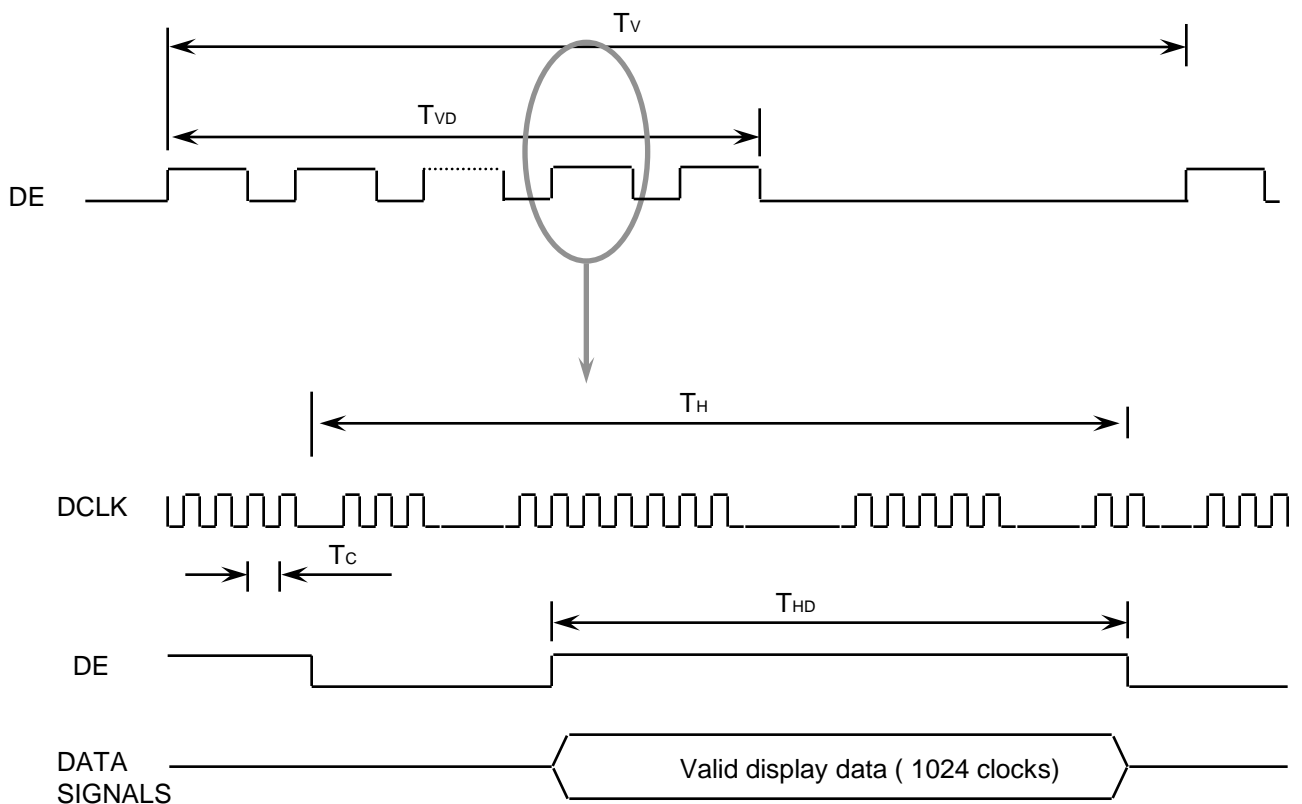
Samsung Secret

6. INTERFACE TIMING

6.1 Timing Parameters

Signal	Item	Symbol	Min.	Typ.	Max.	Unit	Note
Frame Frequency	Cycle	TV	773	790	810	Lines	
Vertical Active Display Term	Display Period	TVD	-	768	-	Lines	
One Line Scanning Time	Cycle	TH	1426	1526	1726	Clocks	
Horizontal Active Display Term	Display Period	THD	-	1366	-	Clocks	

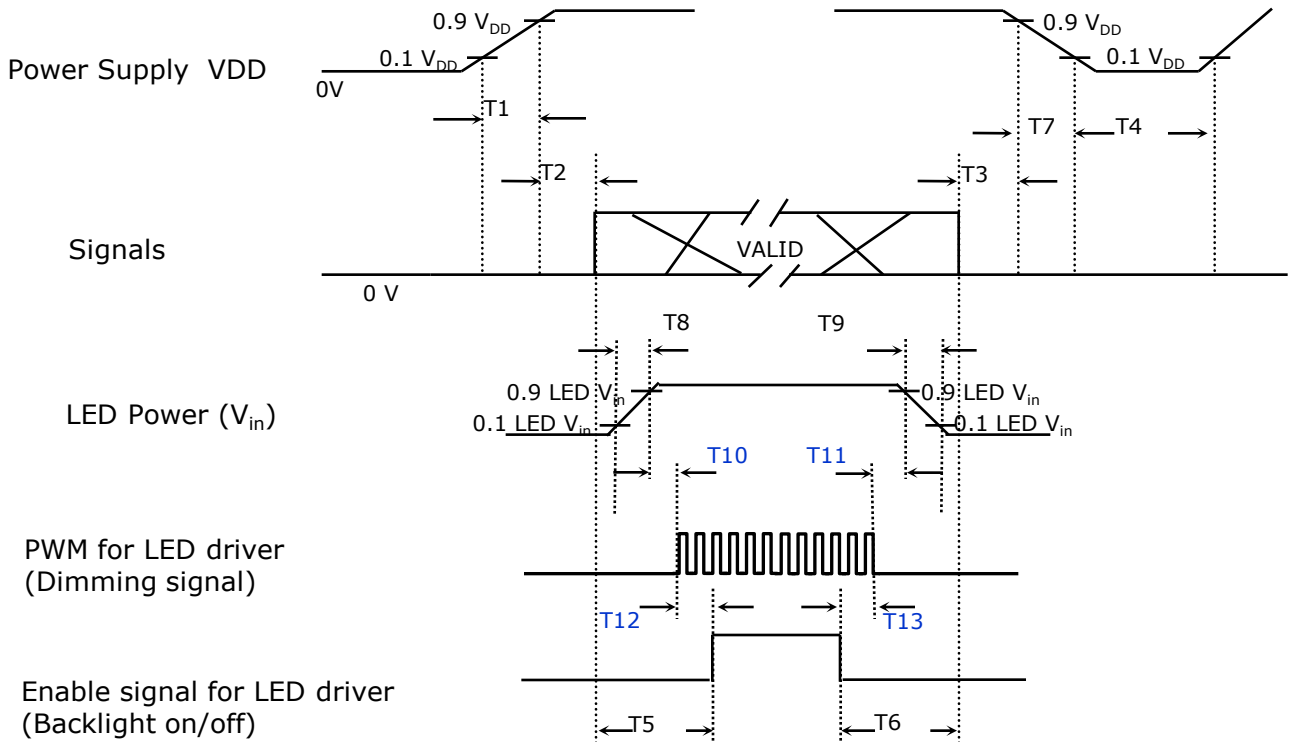
6.2 Timing diagrams of interface signal



Samsung Secret

6.3 Power ON/OFF Sequence

: To prevent a latch-up or DC operation of the LCD module, the power on/off sequence should be as the diagram below.



Power ON/OFF Sequence

Timing (ms)	Remarks
$0.5 < T1 \leq 10$	V _{DD} rising time from 10% to 90%
$0 < T2 \leq 50$	Delay from V _{DD} to valid data at power ON
$0 < T3 \leq 50$	Delay from valid data OFF to V _{DD} OFF at power Off
$500 \leq T4$	V _{DD} OFF time for Windows restart
$200 \leq T5$	Delay from valid data to B/L enable at power ON
$200 \leq T6$	Delay from valid data off to B/L disable at power Off
$0 < T7 \leq 10$	V _{DD} falling time from 90% to 10%
$0.5 < T8 \leq 10$	LED V _{in} rising time from 10% to 90%
$0.5 < T9 \leq 10$	LED V _{in} falling time from 90% to 10%
$0 \leq T10$	Delay from LED driver Vin rising time 90% to PWM ON
$0 \leq T11$	Delay from PWM Off to LED driver Vin falling time 10%, Must Keep rule
$0 \leq T12$	Delay from PWM ON to B/L Enable ON, Must Keep rule
$0 \leq T13$	Delay from B/L Enable Off to PWM Off

Power Sequence & Timing Parameters

Samsung Secret

NOTE.

- (1) The supply voltage of the external system for the module input should be the same as the definition of V_{DD} .
- (2) Apply the lamp voltage within the LCD operation range. When the back-light turns on before the LCD operation or the LCD turns off before the back-light turns off, the display may momentarily become white.
- (3) In case of $V_{DD} = \text{off level}$, please keep the level of input signals on the low or keep a high impedance.
- (4) T_4 should be measured after the module has been fully discharged between power off and on period.
- (5) Interface signal shall not be kept at high impedance when the power is on.

7. Mechanical Outline Dimension

Approval

Refer to the next page

Samsung Secret

Doc.No.

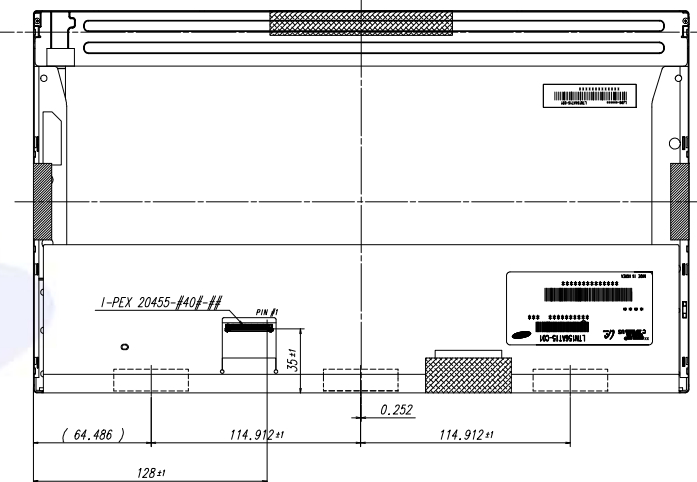
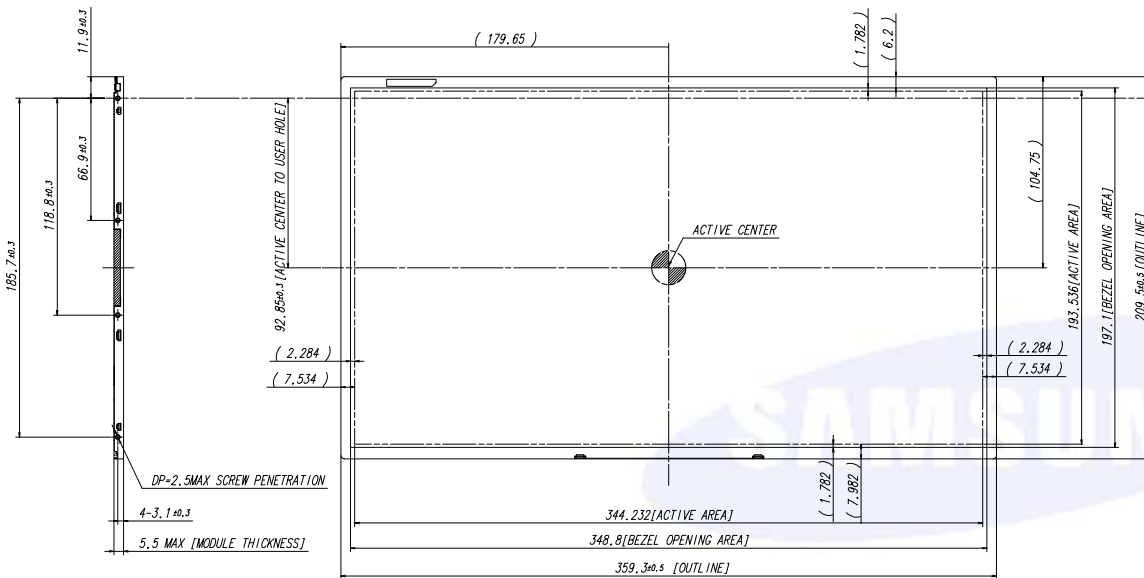
LTN156AT15-Cxx

Rev.No

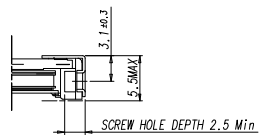
04-A00-G-101122

Page

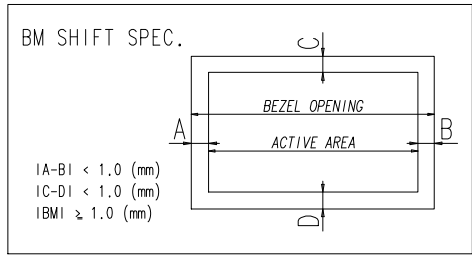
24 / 33



SAMSUNG ELECTRONICS
07011703



<USER HOLE SCREW HOLE DEPTH>



- * NOTE
- SIGNAL INTERFACE CONNECTOR TO BE SPECIFIED AS BELOW.
- MAKER : I-PEX(Not accept compotable connector basically)
- INPUT CONNECTOR : I-PEX 20455-040E-12
 - LED CONNECTOR FOR BACKLIGHT TO BE SPECIFIED AS BELOW.
- MAKER : UJU Electronics
- PART NO : 51441-1041
 - CALIFERS MEASURING FORCE : 750 ± 250 gfcm
 - MAXIMUM SCREW TORQUE : MAX 2.5 Kgf-cm(5TIMES)
 - WEIGHT : 465 g MAX
 - IN ORDER TO AVOID IC DAMAGE, IT IS NOT ALLOW THAT OVERLAPPING OF CABLES OR ANTENNAS, CAMERA, WLAN, IWAN, OVER THESE COF LOCATIONS.

REV	DATE	DESCRIPTION OF REVISION	REASON	CHK-D BY
SCALE	1/2			
DRAWN	2010.03.26			
CHECKED				
DATE				
SAMSUNG ELECTRONICS				VER. 001

8. PACKING

1. CARTON(Internal Package)

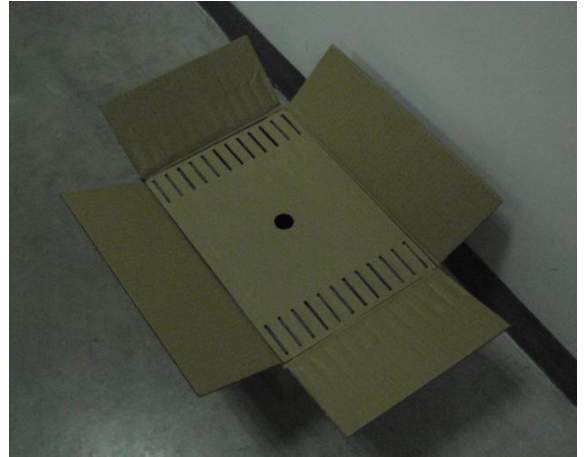
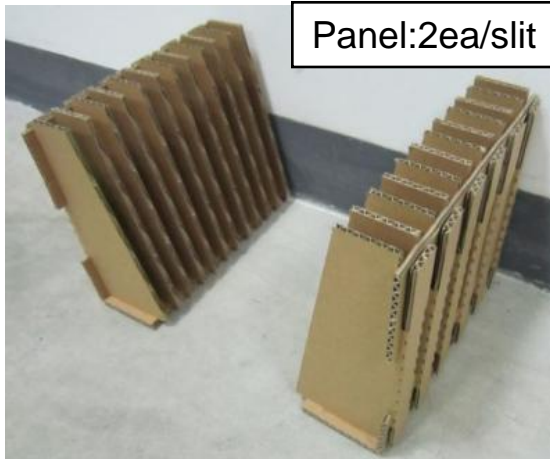
(1) Packing Form

Paper box type : Paper type is more eco-friendly than EPS and plastic

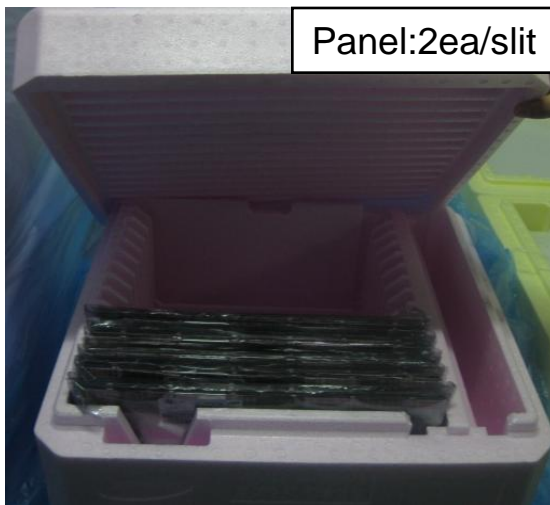
EPP box type : This type is for direct shipping

(2) Packing Method

Paper box type



EPP box type



Note : Paper Box

- 1) Total Weight : Approximately 12.5 kg
- 2) Acceptance number of piling : 22sets
- 3) Carton size : 283(W) × 401(L) × 253(H)

EPP Box

- 1) Total Weight : Approximately 16 kg
- 2) Acceptance number of piling : 30 sets
- 3) Carton size : 501(W) × 509(L) × 280(H)

Samsung Secret

(3)Packing Material

No	Part name	Quantity (EPP)	Quantity (PAPER)
1	Static electric protective sack	30	22
2	Packing case (Inner box) included shock absorber	1 set	1 set
3	Pictorial marking	2 pcs	2 pcs
4	Carton	1 set	1 set

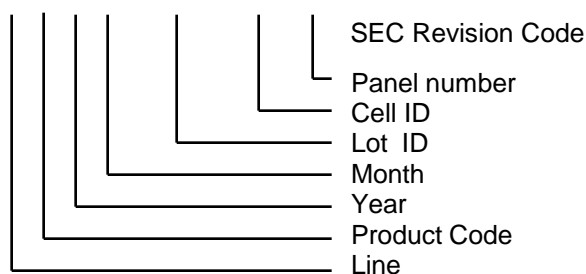
9. MARKINGS & OTHERS

A nameplate bearing followed by is affixed to a shipped product at the specified location on each product.

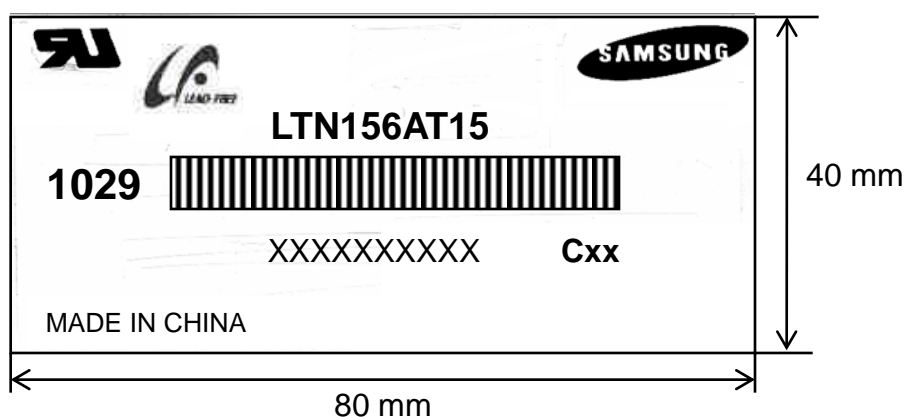
(1)Parts number : LTN156AT15

(2)Revision code : 3 letters

(3)Lot number : X X X X XXX XX X **Cxx**



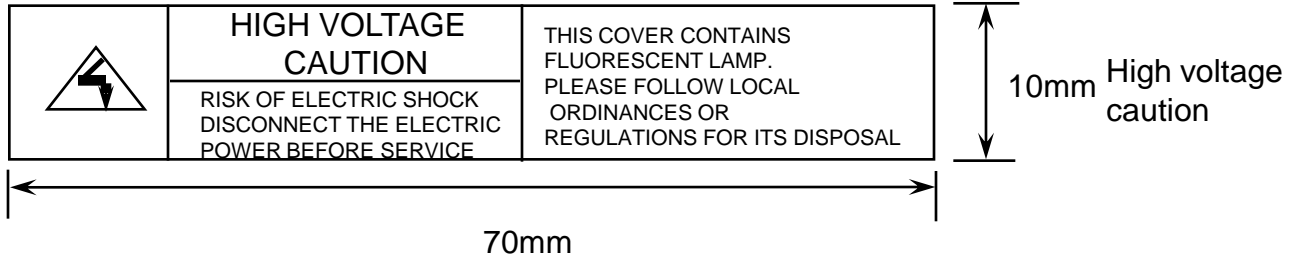
(5) Nameplate Indication



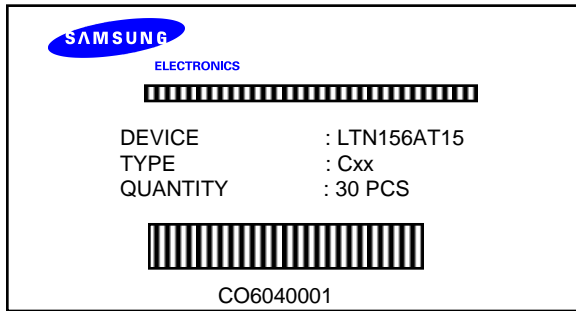
Parts name : LTN156AT15
 Lot number : XXXXXXXXXX
 Inspected work week : 1029(2010 year, 29nd week)

Samsung Secret

High voltage caution label



(6) Packing small box attach



10. GENERAL PRECAUTIONS

Approval

1. Handling

- (a) When the module is assembled, It should be attached to the system firmly using every mounting holes. Be careful not to twist and bend the modules.
- (b) Refrain from strong mechanical shock and / or any force to the module. In addition to damage, this may cause improper operation or damage to the module and CCFT back-light.
- (c) Note that polarizers are very fragile and could be easily damaged. Do not press or scratch the surface harder than a HB pencil lead.
- (d) Wipe off water droplets or oil immediately. If you leave the droplets for a long time, Staining and discoloration may occur.
- (e) If the surface of the polarizer is dirty, clean it using some absorbent cotton or soft cloth.
- (f) The desirable cleaners are water, IPA (Isopropyl Alcohol) or Hexane. Do not use Ketone type materials(ex. Acetone), Ethyl alcohol, Toluene, Ethyl acid or Methyl chloride. It might permanent damage to the polarizer due to chemical reaction.
- (g) If the liquid crystal material leaks from the panel, it should be kept away from the eyes or mouth . In case of contact with hands, legs or clothes, it must be washed away thoroughly with soap.
- (h) Protect the module from static , it may cause damage to the C-MOS Gate Array IC.
- (i) Use fingerstalls with soft gloves in order to keep display clean during the incoming inspection and assembly process.
- (j) Do not disassemble the module.
- (k) Do not pull or fold the lamp wire.
- (l) Do not adjust the variable resistor which is located on the back side.
- (m) Protection film for polarizer on the module shall be slowly peeled off just before use so that the electrostatic charge can be minimized.
- (n) Pins of I/F connector shall not be touched directly with bare hands.

Samsung Secret

2. STORAGE

- (a) Do not leave the module in high temperature, and high humidity for a long time. It is highly recommended to store the module with temperature from 0 to 35 °C and relative humidity of less than 70%.
- (b) Do not store the TFT-LCD module in direct sunlight.
- (c) The module shall be stored in a dark place. It is prohibited to apply sunlight or fluorescent light during the store.

3. OPERATION

- (a) Do not connect,disconnect the module in the “ Power On” condition.
- (b) Power supply should always be turned on/off by following item 6.3 “ Power on/off sequence “.
- (c) Module has high frequency circuits. Sufficient suppression to the electromagnetic interference shall be done by system manufacturers. Grounding and shielding methods may be important to minimize the interference.
- (d) The cable between the back-light connector and its inverter power supply shall be a minimized length and be connected directly . The longer cable between the back-light and the inverter may cause lower luminance of lamp(CCFT) and may require higher startup voltage (Vs).
- (e) The standard limited warranty is only applicable when the module is used for general notebook applications. If used for purposes other than as specified, SEC is not to be held reliable for the defective operations. It is strongly recommended to contact SEC to find out fitness for a particular purpose.

4. OTHERS

- (a) Ultra-violet ray filter is necessary for outdoor operation.
- (b) Avoid condensation of water. It may result in improper operation or disconnection of electrode.
- (c) Do not exceed the absolute maximum rating value. (the supply voltage variation, input voltage variation, variation in part contents and environmental temperature, so on) Otherwise the module may be damaged.
- (d) If the module displays the same pattern continuously for a long period of time,it can be the situation when the image “sticks” to the screen.
- (e) This module has its circuitry PCB's on the rear side and should be handled carefully in order not to be stressed.

Samsung Secret

11. EDID

Approval

Address (HEX)	FUNCTION	Value	BIN	DEC	ASCII or Data	Notes
		HEX				
00	Header	00	00000000	0		EDID Header
01		FF	11111111	255		
02		FF	11111111	255		
03		FF	11111111	255		
04		FF	11111111	255		
05		FF	11111111	255		
06		FF	11111111	255		
07		00	00000000	0		
08	ID Manufacturer Name	4C	01001100	76	S	3 character ID
09		A3	10100011	163	E C	"SEC"
0A	ID Product Code	41	01000001	65	[A]	
0B		54	01010100	84	[T]	
0C	32-bit serial no.	00	00000000	0		
0D		00	00000000	0		
0E		00	00000000	0		
0F		00	00000000	0		
10	Week of manufacture	00	00000000	0		
11	Year of manufacture	14	00010100	20	2010	2010
12	EDID Structure Ver.	01	00000001	1	1	EDID Ver. 1.0
13	EDID revision #	03	00000011	3	3	EDID Rev. 3
14	Video input definition	80	10000000	128		
15	Max H image size	22	00100010	34	34	34 cm(approx)
16	Max V image size	13	00010011	19	19	19 cm(approx)
17	Display Gamma	78	01111000	120	2.2	Gamma 2.2
18	Feature support	0A	00001010	10		
19	Red/green low bits	8D	10001101	141		01000010
1A	Blue/white low bits	A5	10100101	165		11010101
1B	Red x/ high bits	9D	10011101	157	0.615	Red x0.587= 10011000
1C	Red y	5B	01011011	91	0.355	Red y0.344= 01010111
1D	Green x	55	01010101	85	0.335	Green x0.320= 01010010
1E	Green y	9C	10011100	156	0.610	Green y0.541= 10001100
1F	Blue x	26	00100110	38	0.150	Blue x0.155= 00100111
20	Blue y	19	00011001	25	0.100	Blue y0.130= 00100001
21	White x	50	01010000	80	0.313	White x0.313= 01010000
22	White y	54	01010100	84	0.329	White y0.329= 01010100
23	Established timing 1	00	00000000	0		601.088
24	Established timing 2	00	00000000	0		
25	Established timing 3	00	00000000	0		
26	Standard timing #1	01	00000001	1		not used
27		01	00000001	1		
28	Standard timing #2	01	00000001	1		not used
29		01	00000001	1		

Samsung Secret

2A	Standard timing #3	01	00000001	1		not used
2B		01	00000001	1		
2C	Standard timing #4	01	00000001	1		not used
2D		01	00000001	1		
2E	Standard timing #5	01	00000001	1		not used
2F		01	00000001	1		
30	Standard timing #6	01	00000001	1		not used
31		01	00000001	1		
32	Standard timing #7	01	00000001	1		not used
33		01	00000001	1		
34	Standard timing #8	01	00000001	1		not used
35		01	00000001	1		
36	Detailed timing/monitor descriptor #1	84	1000100	132	70.44	Main clock
37		1B	00011011	27		
38		56	01010110	86	1366	Hor active
39		78	01111000	120	120	Hor blanking
3A		50	01010000	80		4bit : 4bit
3B		00	00000000	0	768	Vertical active
3C		16	00010110	22	22	Vertical blanking
3D		30	00110000	48		4bit : 4bit
3E		30	00110000	48	48	Hor sync. Offset
3F		20	00100000	32	32	H sync. Width
40		25	00100101	37	2	V sync. Offset
					5	V sync. Width
41		00	00000000	0		2bit : 2bit :2bit :2bit
42		58	01011000	88	344	H image size
43		C2	11000010	194	194	V image size
44		10	00010000	16		
45		00	00000000	0		No Horizontal Border
46		00	00000000	0		No Vertical Border
47		19	00011001	25		
48		Detailed timing/monitor descriptor #2	00	00000000	0	
49	00		00000000	0		
4A	00		00000000	0		
4B	0F		00001111	15		
4C	00		00000000	0		
4D	00		00000000	0		Value=HSPWmin / 2
4E	00		00000000	0		Value=HSPWmax / 2
4F	00		00000000	0		Value=Thbpmin / 2
50	00		00000000	0		Value=Thbpmax / 2
51	00		00000000	0		Value=VSPWmin / 2
52	00		00000000	0		Value=VSPWmax / 2
53	00		00000000	0		Value=Tvbpmin / 2
54	00		00000000	0		Value=Tvbpmax / 2
55	23		00100011	35		Thpmin=value*2 + HA pixelclks
56	87		10000111	135		Thpmax=value*2 + HA pixelclks
57	02		00000010	2		Tvpmin=value*2 + VA lines
58	64		01100100	100		Tvpmax=value*2 + VA lines
59	01	00000001	1		Module revision	

Samsung Secret

5A	Detailed timing/monitor descriptor #3	00	00000000	0		ASCII Data String Tag
5B		00	00000000	0		
5C		00	00000000	0		
5D		FE	11111110	254		
5E		00	00000000	0		
5F		53	01010011	83	[S]	
60		41	01000001	65	[A]	
61		4D	01001101	77	[M]	
62		53	01010011	83	[S]	
63		55	01010101	85	[U]	
64		4E	01001110	78	[N]	
65		47	01000111	71	[G]	
66		0A	00001010	10	[^]	
67		20	00100000	32	[]	
68		20	00100000	32	[]	
69		20	00100000	32	[]	
6A	20	00100000	32	[]		
6B	20	00100000	32	[]		
6C	Detailed timing/monitor descriptor #4	00	00000000	0		Monitor Name Tag (ASCII)
6D		00	00000000	0		
6E		00	00000000	0		
6F		FE	11111110	254		
70		00	00000000	0		
71		4C	01001100	76	[L]	
72		54	01010100	84	[T]	
73		4E	01001110	78	[N]	
74		31	00110001	49	[1]	
75		35	00110101	53	[5]	
76		36	00110110	54	[6]	
77		41	01000001	65	[A]	
78		54	01010100	84	[T]	
79		31	00110001	49	[1]	
7A		35	00110101	53	[5]	
7B		43	01000011	67	[C]	
7C	30	00110000	48	[0]		
7D	31	00110001	49	[1]		
7E	Extension Flag	00	00000000	0		
7F	Checksum	5D	01011101	93		

Samsung Secret