

The LTS Series ceramic filter is used for TV 4.5 / 5.5 / 6.0 / 6.5 MHz (TV SIF Stage Use).

Obsolete/End of Life Date 5/06/2020

Request a Sample

OPERATING CONDITIONS / ELECTRICAL CHARACTERISTICS



- Wide Bandwidth
- RoHS Compliant (Note 7 Exemption)
- Low insertion loss
- Excellent spurious suppression.

Part Number	LTS4.5MCB	LTS5.5MCB	LTS6.0MCB	LTS6.5MCB	Units
Nominal Center Frequency (Fo)	4.50	5.50	6.00	6.50	MHz
3 dB Bandwidth	± 60 KHz Min.	± 60 KHz Min.	± 60 KHz Min.	± 70 KHz Min.	KHz
20 dB Bandwidth	600 KHz Max.	600 KHz Max.	600 KHz Max.	650 KHz Max.	KHz
Insertion Loss	6 dB Max.	6 dB Max.	6 dB Max.	6 dB Max.	dB
Spurious Response	30 Min. 0 ~ 4.5 MHz	30 Min. 0 ~ 6.0 MHz	30 Min. 0 ~ 6.0 MHz	30 Min. 0 ~ 6.5 MHz	dB
	15 Min. 4.5 ~ 7.0 MHz	15 Min. 6.0 ~ 7.0 MHz	15 Min. 6.0 ~ 7.5 MHz	15 Min. 6.5 ~ 8.0 MHz	
	30 Min. 7.0 ~ 10.0 MHz	30 Min. 7.0 ~ 10.0 MHz	30 Min. 7.5 ~ 10.0 MHz	30 Min. 8.0 ~ 10.0 MHz	
Withstanding Voltage	DC 50V (1 Min.)	DC 50V (1 Min.)	DC 50V (1 Min.)	DC 50V (1 Min.)	V
Insulation Resistance	100 MΩ Min.	100 MΩ Min.	100 MΩ Min.	100 MΩ Min.	MΩ
Temperature Characteristics	±100 ppm/°C Max.	±100 ppm/°C Max.	±100 ppm/°C Max.	±100 ppm/°C Max.	ppm/°C
Operating Temperature	-25 ~ +85°C	-25 ~ +85°C	-25 ~ +85°C	-25 ~ +85°C	°C
Storage Temperature	-40 ~ +85°C	-40 ~ +85°C	-40 ~ +85°C	-40 ~ +85°C	°C
Input / Output Impedance	1000Ω	600Ω	470Ω	470Ω	Ω

Package Dimensions (mm)

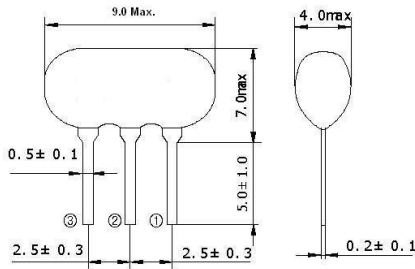
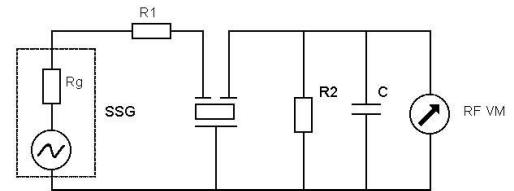


Figure 1) Side and End views

Pin Connections	
#1	In/Out
#2	Ground
#3	Out/In



$R_g + R_1 = R_2$
 $C = 10 \text{ pF (Including stray)}$

Fo	R2
4.5 MHz	1K Ω
5.5 MHz	600 Ω
6.0 MHz	470 Ω
6.5 MHz	470 Ω

Figure 2) Test Circuit